



# Companies

Katerina Yazeva

# Samsung Group



South Korean group of companies, one of the largest in South Korea, founded in 1938. The world market is known as a manufacturer of high-tech components, telecommunications equipment, household appliances, audio and video devices. Headquartered in Seoul.



# Adidas AG

German industrial group, specializing in the production of athletic footwear, apparel and equipment. CEO - Herbert Hainer. Currently, the company is responsible for the distribution of goods company Adidas, Reebok, Y-3





# BMW

German manufacturer of automobiles, motorcycles, engines, and bicycles. Chairman of the company today is Norbert Reithofer and chief designer - Karim Habib. The company's motto - «Freude am Fahren»



# NIVEA

NIVEA

In Germany in 1882 by pharmacist Paul Carl Beiersdorf invented the plaster, and after his invention started the company «Beiersdorf» (Beiersdorf), which today is a giant of the cosmetics industry.



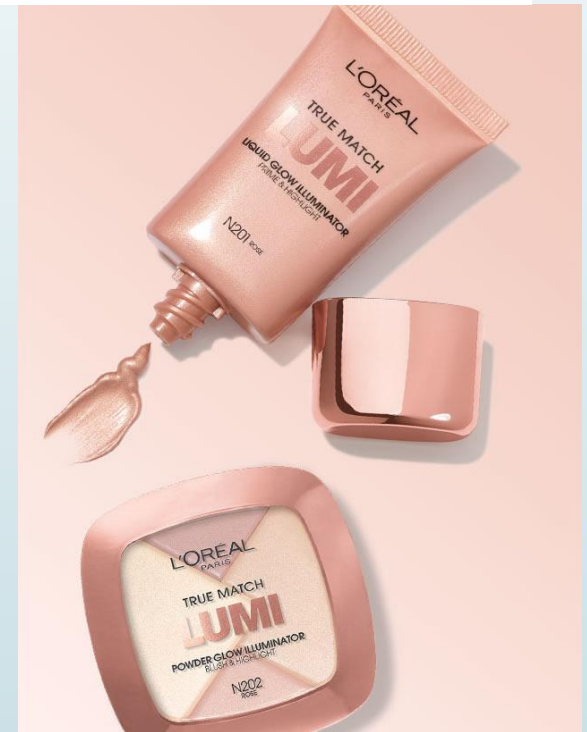
# Canon

Multinational engineering company with headquarters in Tokyo (Japan) engaged in the production of various products for fixation, imaging and printing, as well as the development of solutions in the field of information technology and broadcasting



# L'Oréal

in Russia [citation needed | edit wiki text] In September 2010, L'Oréal has opened a factory in the Kaluga region of Russia (Vorsino industrial park). The enterprise value of 26 million euros and a staff of 150 people specializing in the production of shampoos and other means of hair care products. Planned capacity - 120 million units of finished products per year.





Thanks For attention