

Kruger National Park



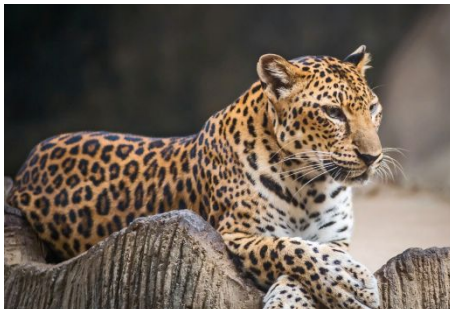
Location

- * The park is located in the east of the former Transvaal province between the rivers Limpopo and Crocodile. In the east, the park borders Mozambique.
- * The total length of the park from north to south is 340 km. The three main parts of the park (northern, central and southern) are formed by the rivers Ulifants and Sabi.



Famous for what can you see there

- * The largest concentration of wild animals in the world is observed. The park is inhabited by elephants, hippos, giraffes, rhinoceroses, lions, leopards, Nile crocodiles, 17 species of antelope.



leopard



African elephant



Nile crocodiles



Giraffes

The best time to visit

- * The best time to visit the park is the drought season from March to September, when the trees fall off the leaves, increasing the field of observation of animals.
- * The park has more than twenty campsites of different levels - from the simplest, tent, to luxury, with bathrooms, swimming pools, libraries, restaurants, cafes and a golf course.



Thank you for attention!

