

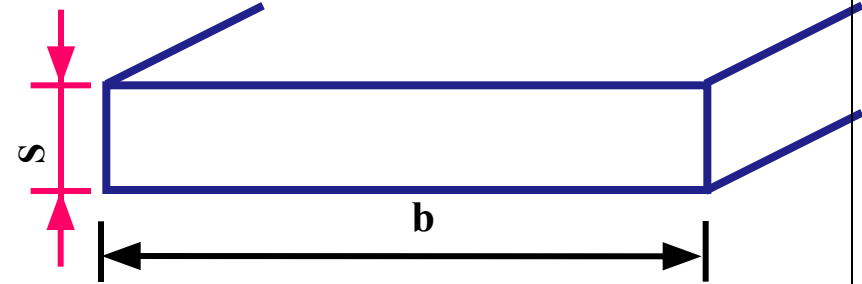
STEEL SECTIONS

Types of Steel Sections

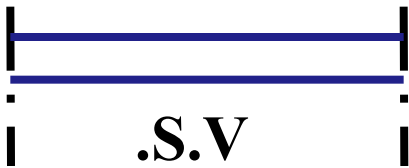




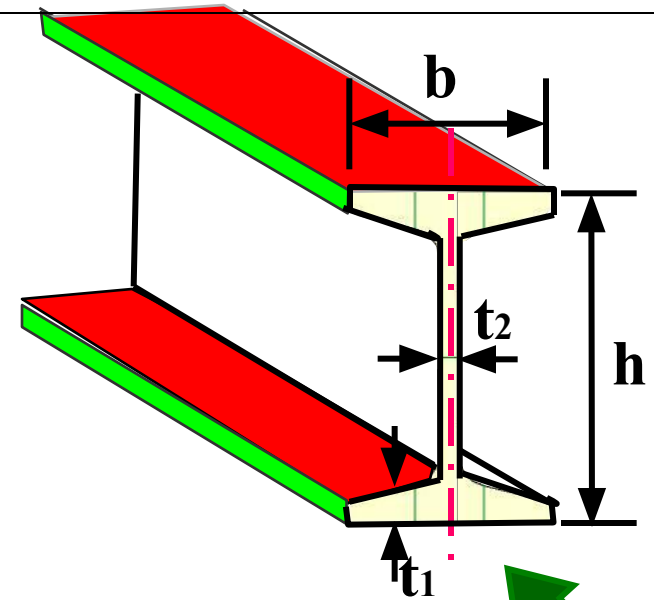
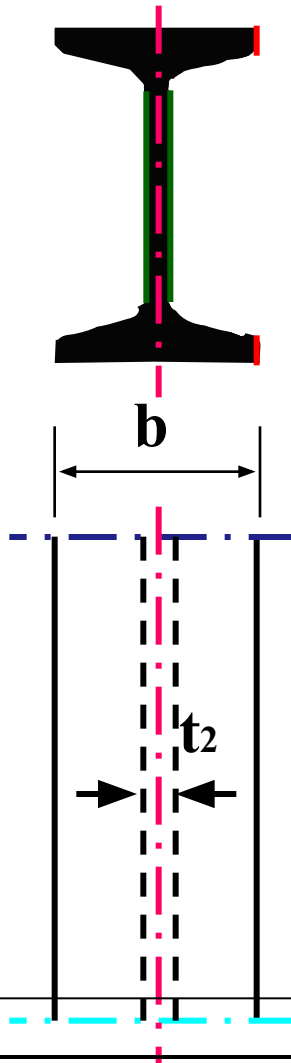
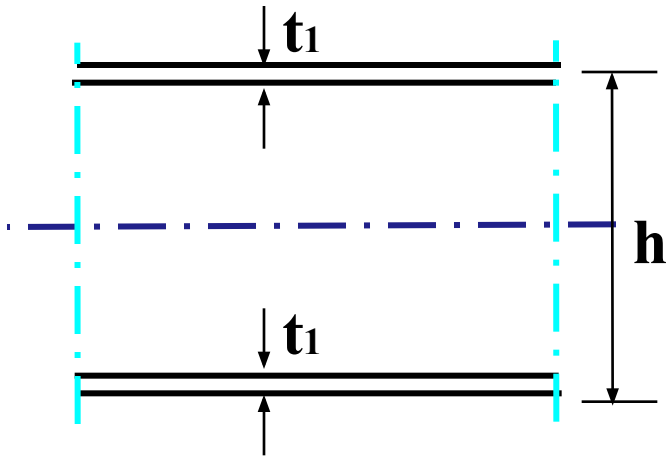
.Flat Plates .1



b x **s**



I-Sections .2

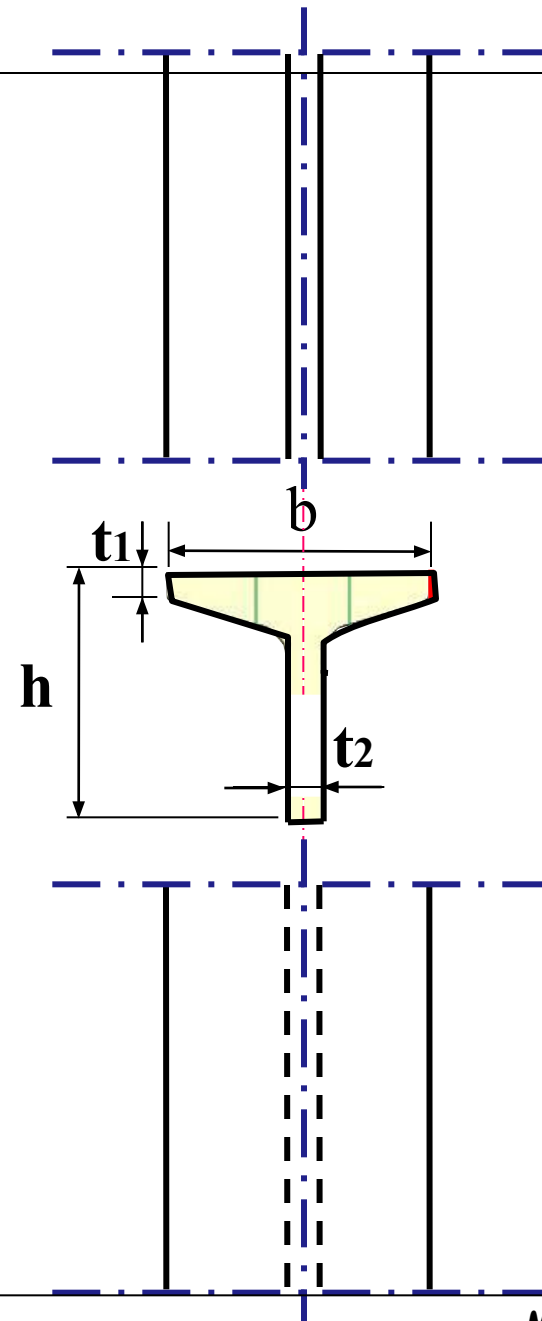
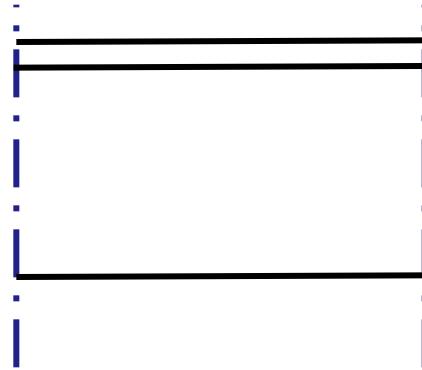


$$\frac{b \times h}{t_1 \times t_2}$$

ELEV

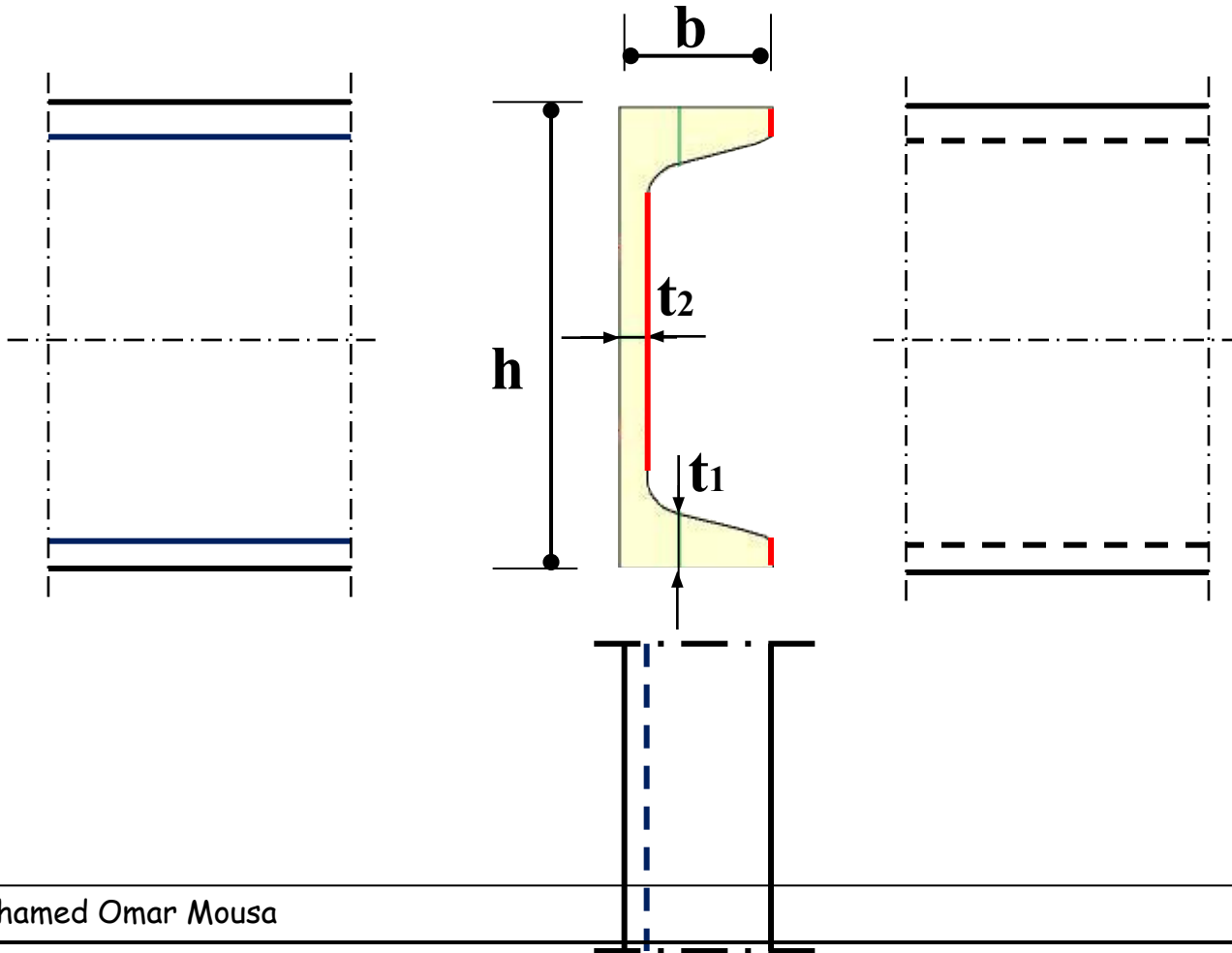
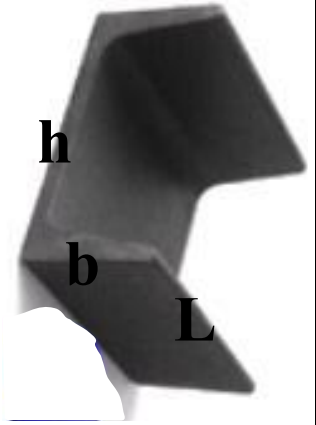
T-Sections .3

$$\frac{b \times h}{t_1 \times t_2}$$



C-Sections .4

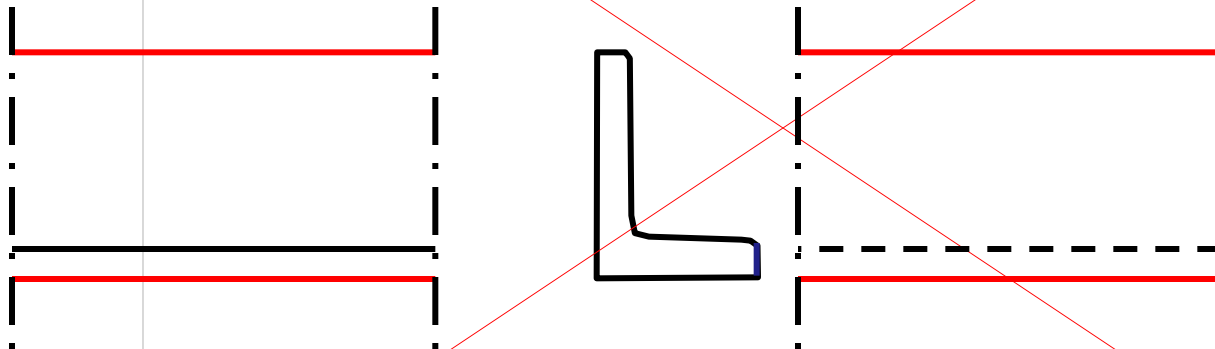
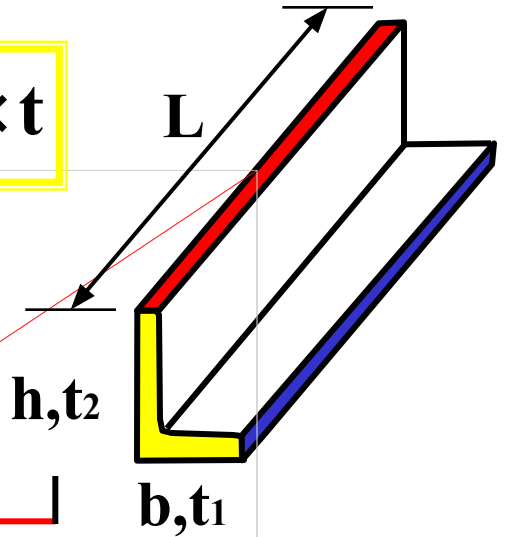
$$\frac{b \times h}{t_1 \times t_2}$$



Angle .5

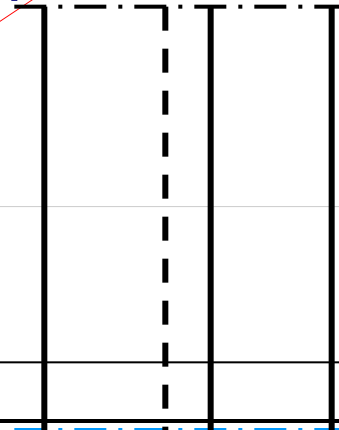
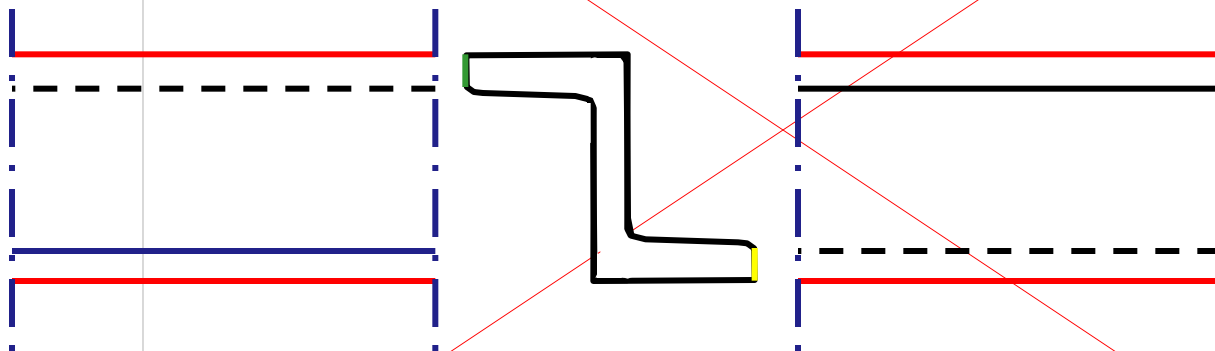
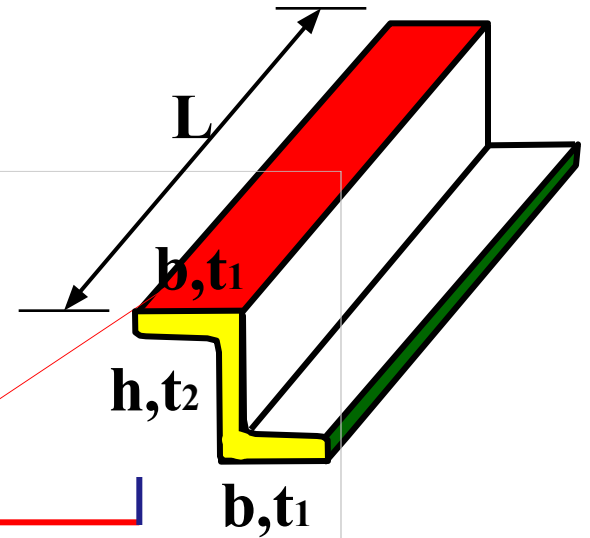
$$L \frac{b \times h}{t_1 \times t_2}$$

$$L b \times t$$



Z-Section .6

$$Z = \frac{b \times h}{t_1 \times t_2}$$

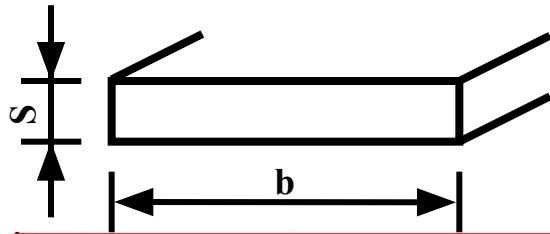








STEEL PLATES (b x s)



Thickness (s)							Thickness (s)							العرض b (mm)
18	16	15	14	13	12	11	10	9	8	7	6.5	6	5	
الوزن (kg/m)														
-	-	-	-	-	-	-	-	-	-	-	-	-	0,393	10
-	-	-	-	-	-	-	-	-	-	-	-	0,518	0,432	11
-	-	-	-	-	-	-	-	-	-	-	-	0,565	0,471	12
-	-	-	-	-	-	-	-	-	0,816	0,714	0,663	0,612	0,510	13
-	-	-	-	-	-	-	-	-	0,879	0,769	-	0,659	0,550	14
1,18	-	-	-	-	-	-	-	-	0,942	0,824	-	0,707	0,589	15
1,26	1,13	-	-	-	-	-	-	-	1,00	0,879	0,816	0,754	0,628	16
1,33	1,20	-	-	-	-	-	-	-	1,07	0,934	0,867	0,801	0,667	17
-	-	-	-	-	-	1,55	1,41	1,27	1,13	0,989	0,918	0,848	0,707	18
-	-	-	-	-	1,79	1,64	1,49	1,34	1,19	1,04	0,969	0,895	0,746	19
-	-	2,36	-	2,04	1,88	1,73	1,57	1,41	1,26	1,10	1,02	0,942	0,785	20
-	-	2,59	2,42	2,25	2,07	1,90	1,73	-	1,38	1,21	1,12	1,04	0,864	22
-	3,14	2,94	2,75	2,55	2,36	-	1,96	-	1,57	1,37	1,28	1,18	0,981	25
3,67	3,27	3,06	2,86	2,65	2,45	-	2,04	-	1,63	1,43	1,33	1,22	1,02	26
3,96	3,52	3,30	3,08	2,86	2,64	-	2,20	-	1,76	1,54	1,43	1,32	1,10	28
4,24	3,77	3,53	3,30	3,06	2,83	-	2,36	2,12	1,88	1,65	1,53	1,41	1,18	30
-	4,02	3,77	3,52	3,27	3,01	-	2,51	-	2,01	-	1,63	1,51	1,26	32
-	4,40	4,12	3,85	3,57	3,30	-	2,75	-	2,20	1,92	1,79	1,65	1,37	35
-	4,77	4,47	4,18	3,88	3,58	-	2,98	-	2,39	-	1,94	1,79	1,49	38
5,65	5,02	4,71	4,40	4,08	3,77	-	3,14	2,83	2,51	2,20	2,04	1,88	1,57	40
-	5,65	5,30	4,95	4,59	4,24	-	3,53	-	2,83	2,47	2,30	2,12	1,77	45
7,07	6,28	5,89	5,50	5,10	4,71	-	3,93	3,53	3,14	2,75	2,55	2,36	1,96	50

DIN 17100 الفولاذ المسطح العريض المدلفن على الساخن مواصفات (سليم) DIN 59200
 العنصر: النوع فولاد الآتش، س، لده طبق مواصفات
 السمك: 5 6 5 7 8 9 10 12 13 14 15 16 18 20 22 24 26 28 30 35 40 45 50
 العرض: 151 160 180 190 200 210 230 240 250 275 300 325 350 375 400 425 450 حتى 1250

2PLATEs 15x250 mm

2L 100x100x10
Length 240 mm

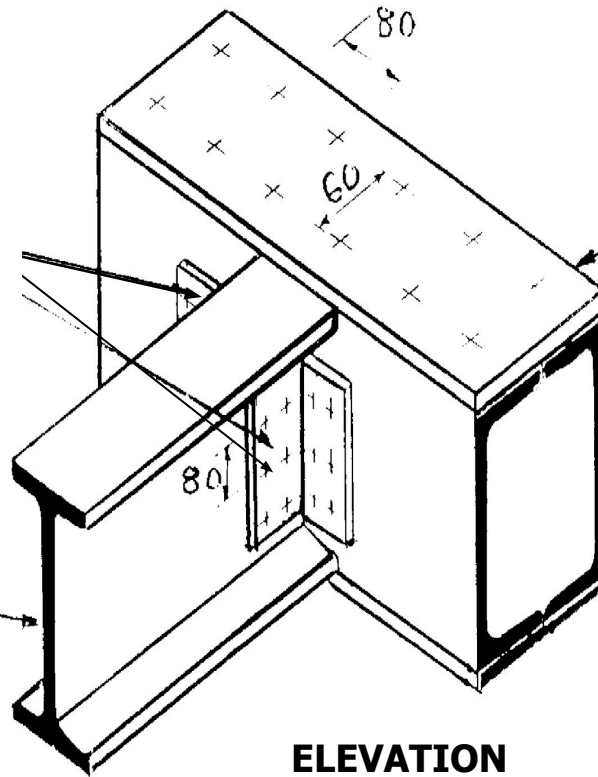
2 Plate
15 X 250 mm

2C $\frac{300x125}{16x24}$

I $\frac{300x100}{7x10}$

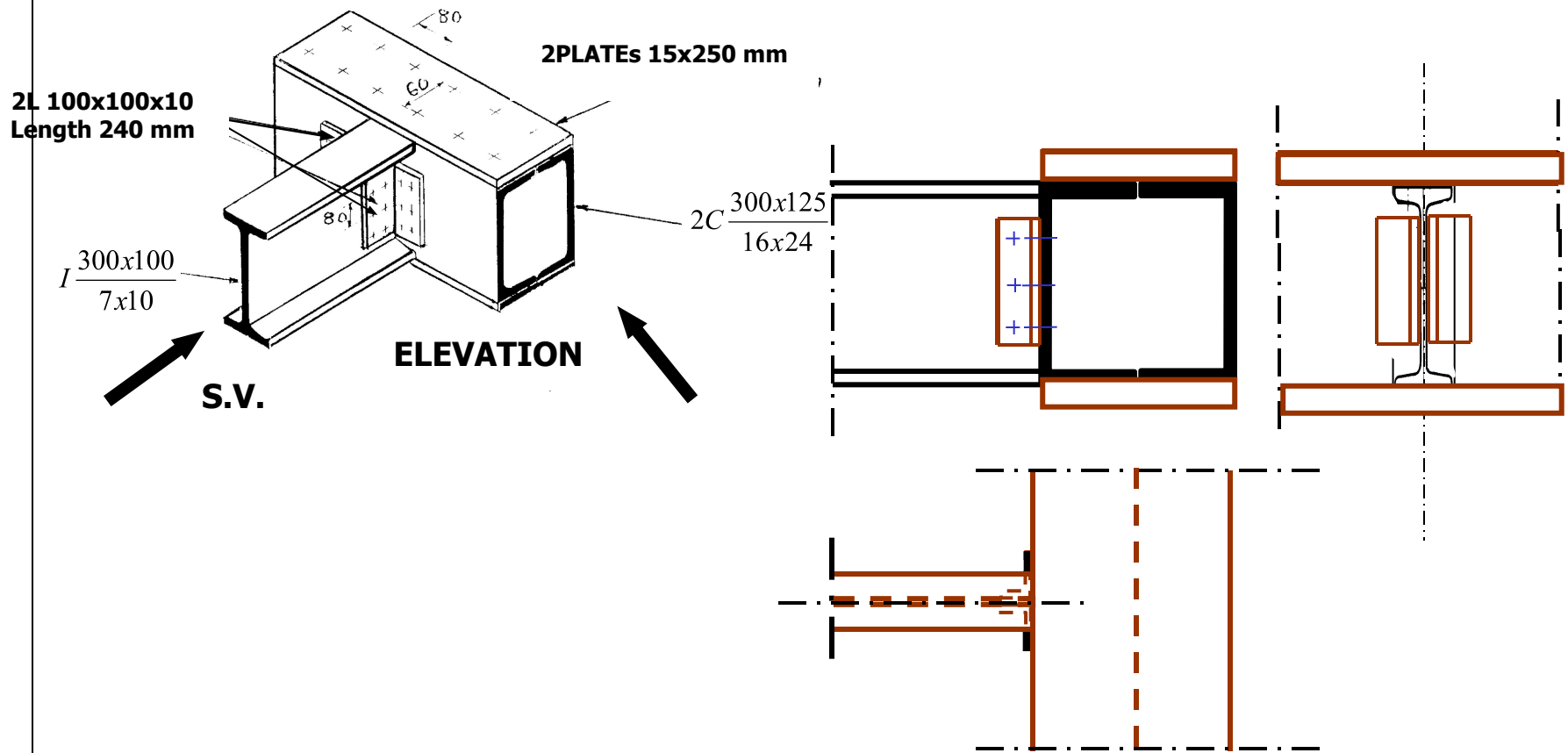
S.V.

ELEVATION



EXAMPLE [1]

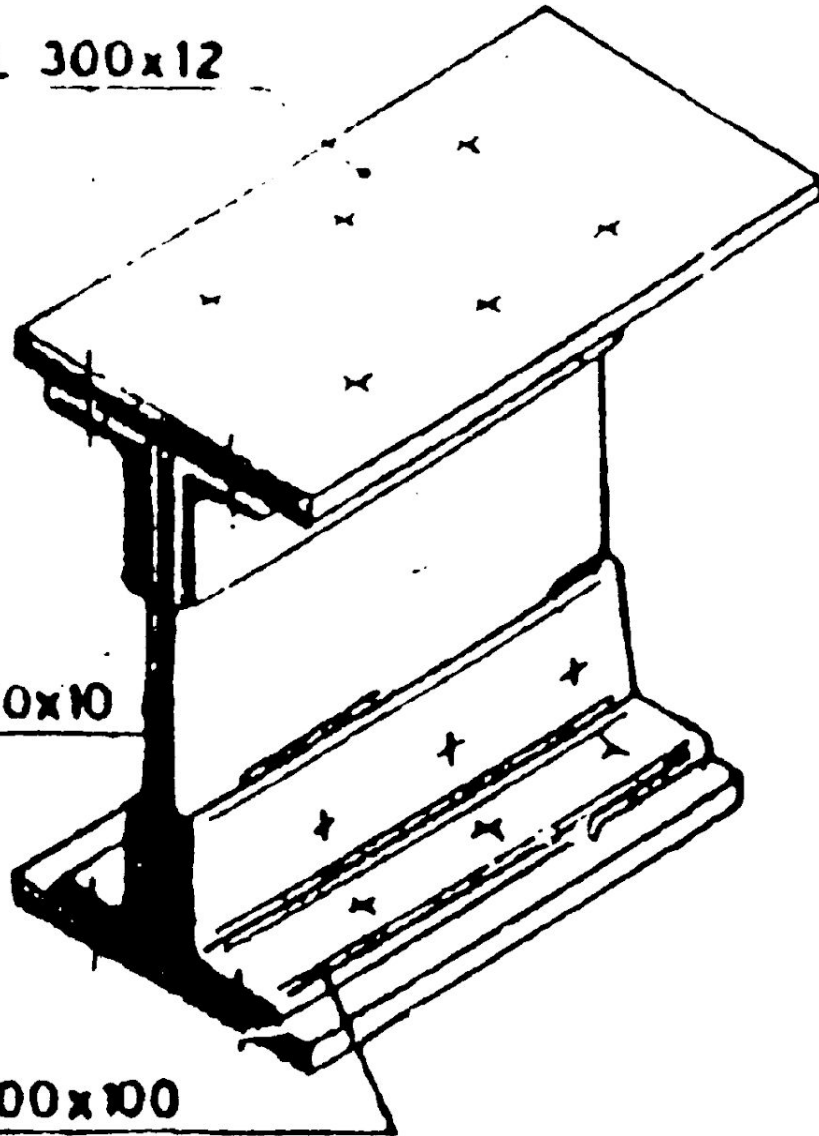
Views from Isometric of compound beam



2PL 300x12

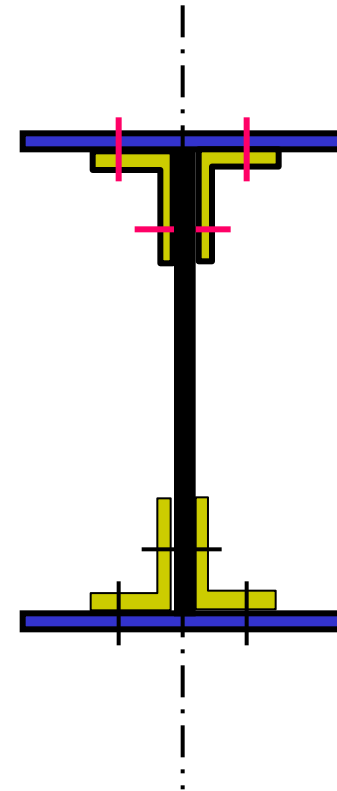
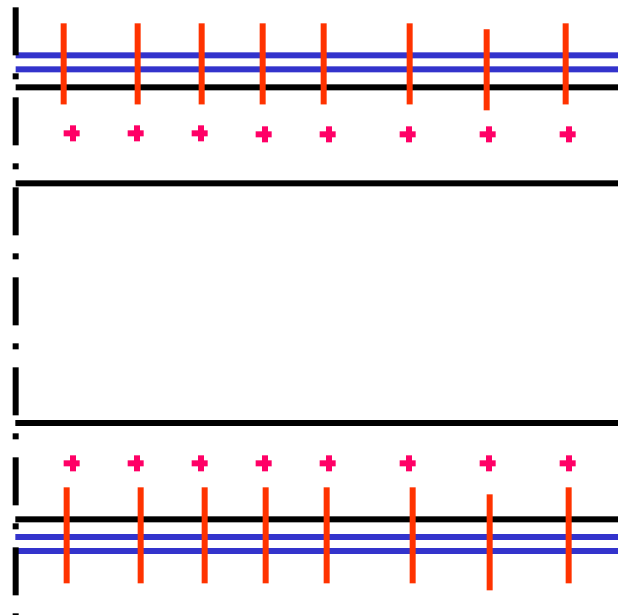
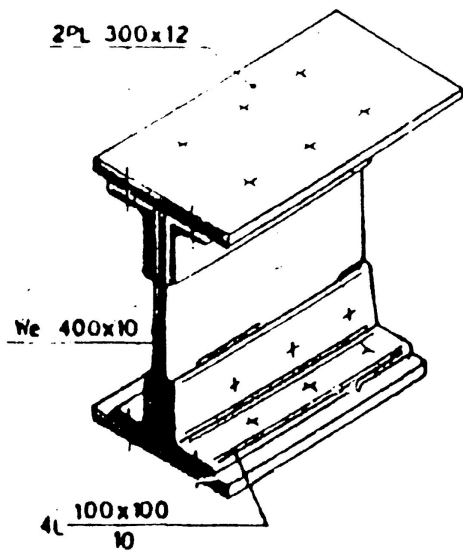
We 400x10

4L 100x100
10



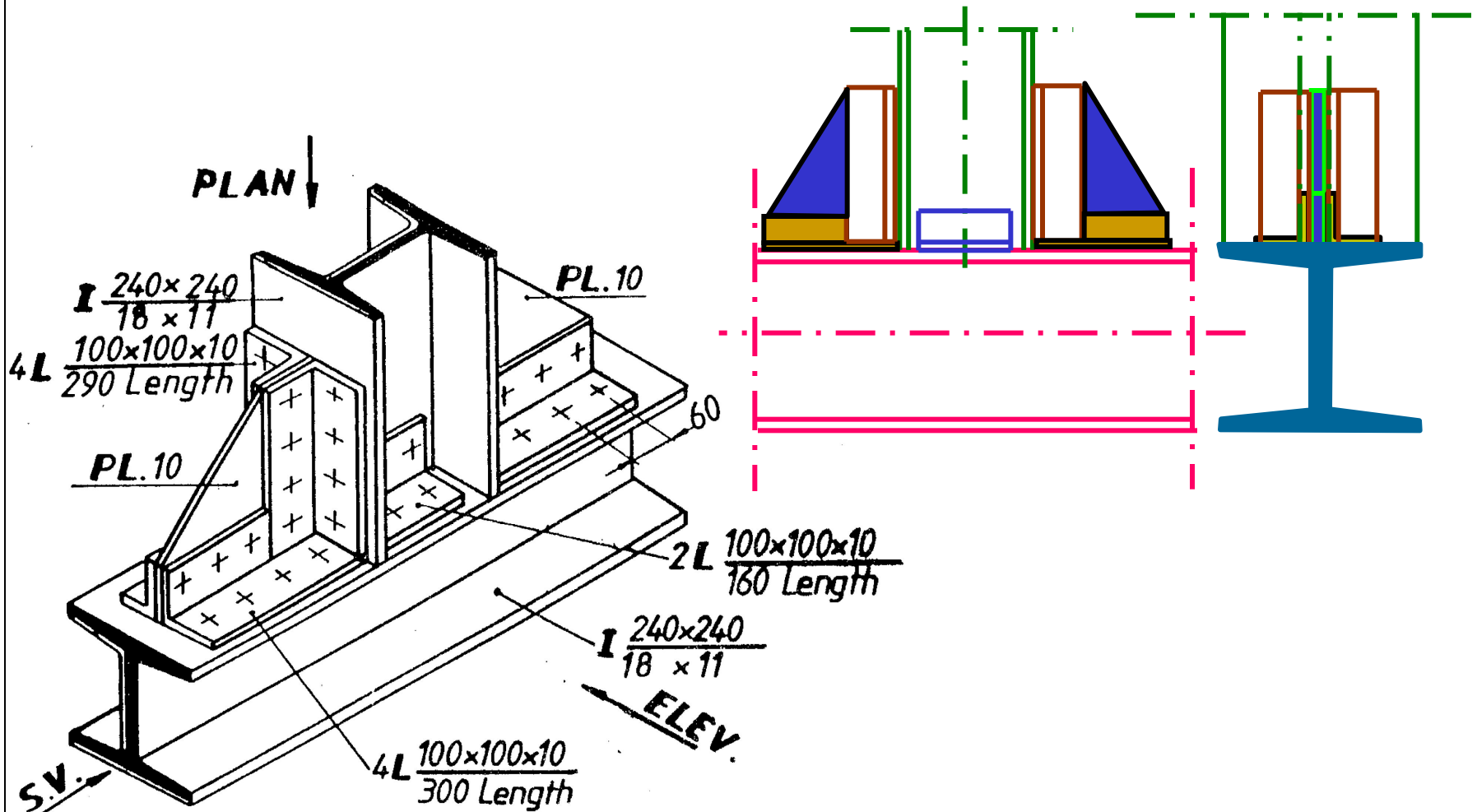
EXAMPLE [2]

Views from isometric of T-shape beam



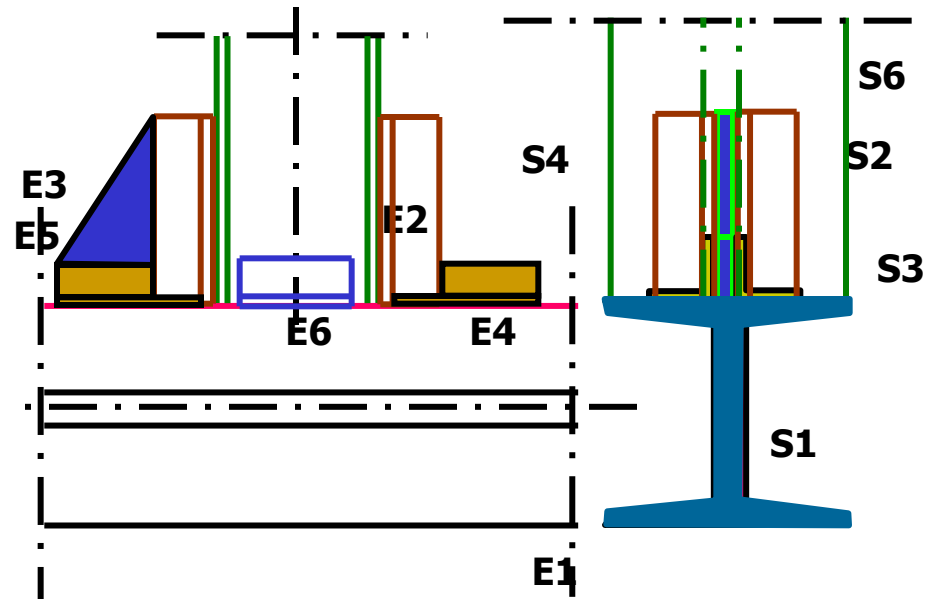
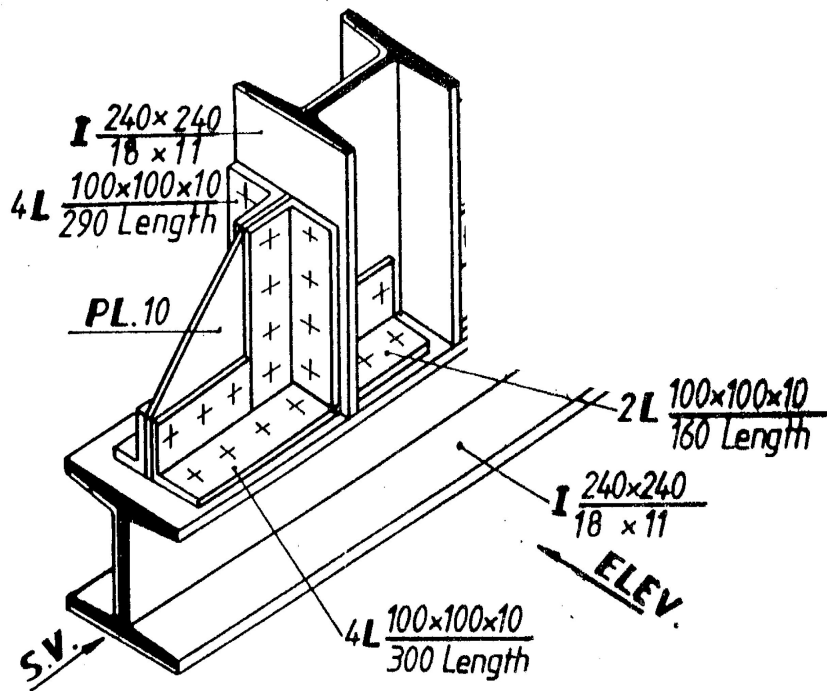
EXAMPLE [3]

Views from symmetrical Isometric.



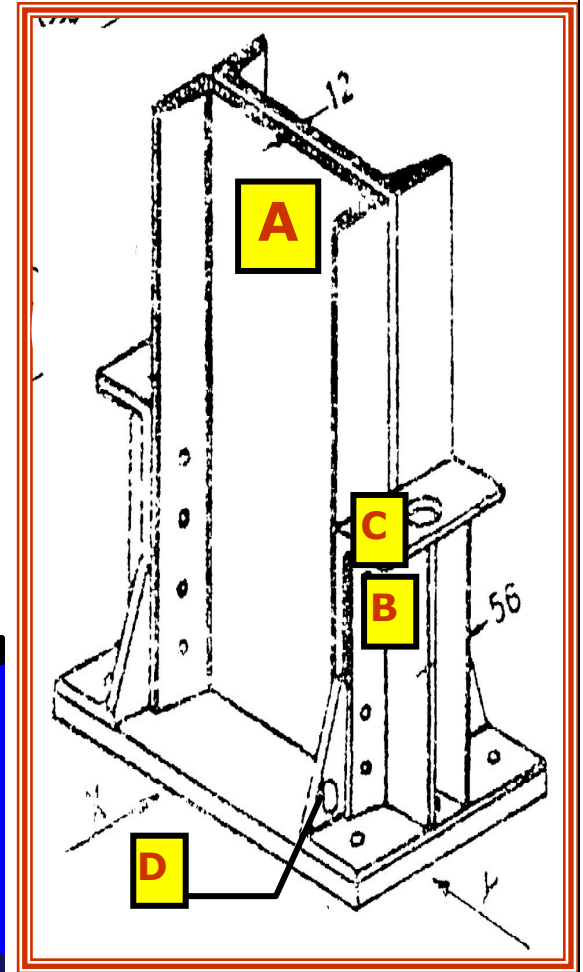
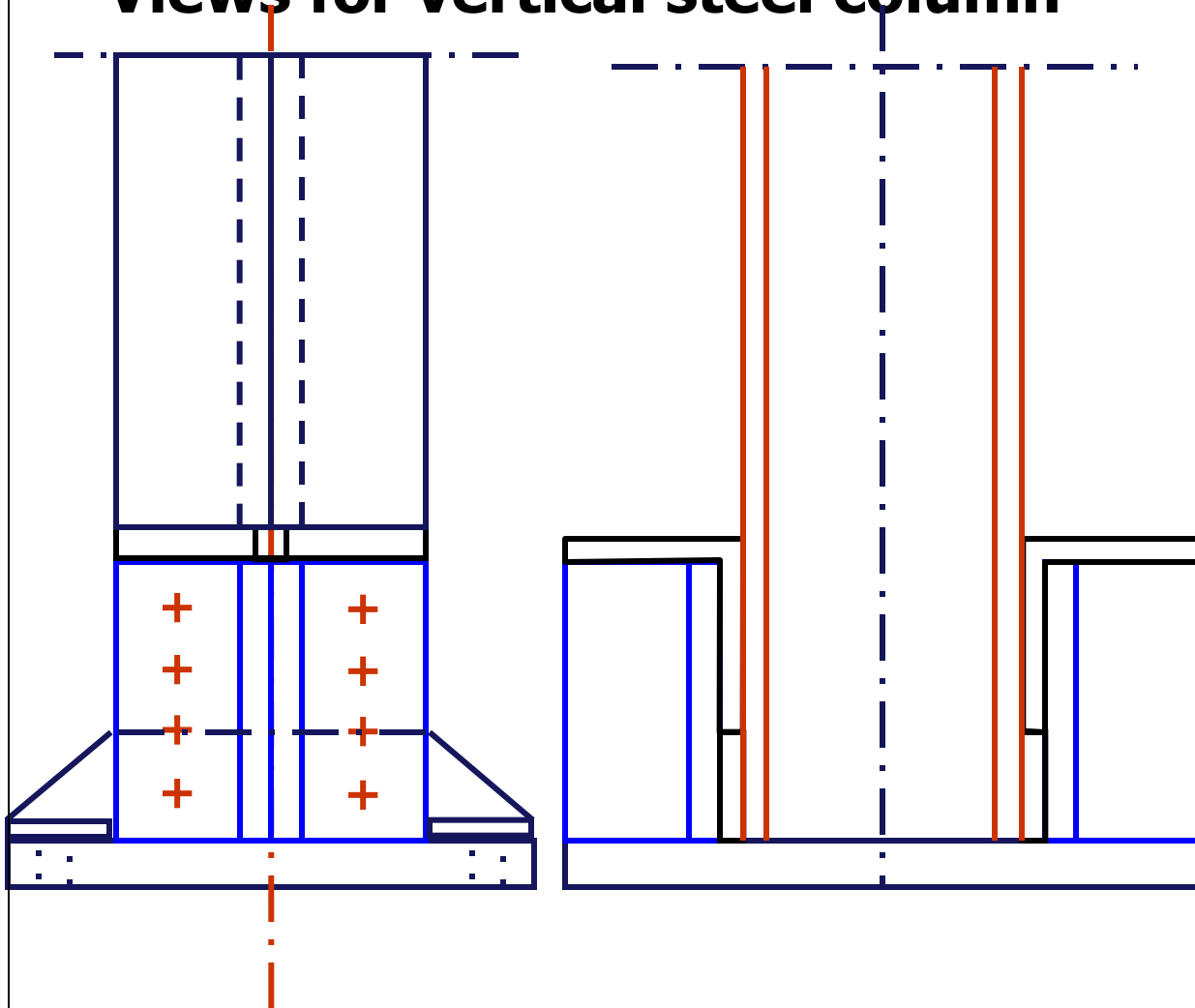
Exercise (4)

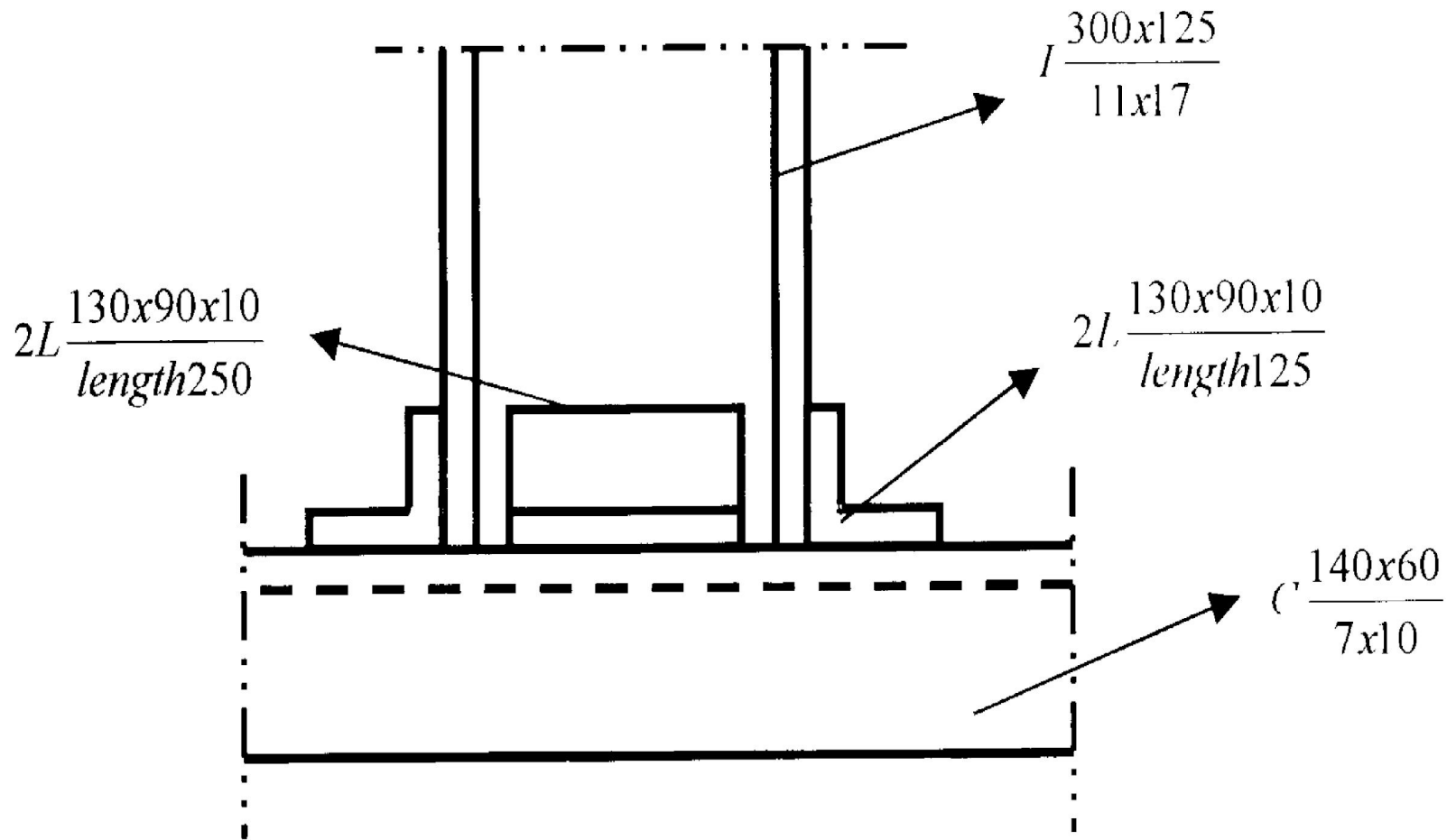
Views from symmetrical Isometric.



EXAMPLE [4]

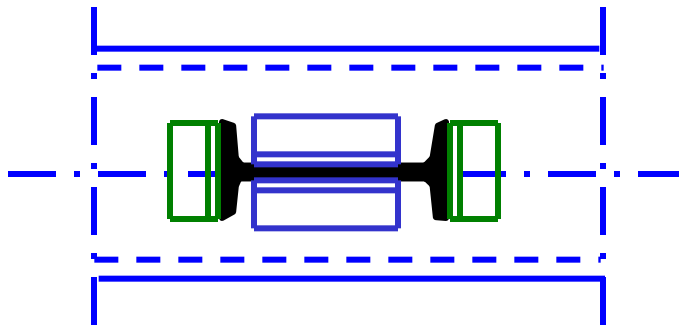
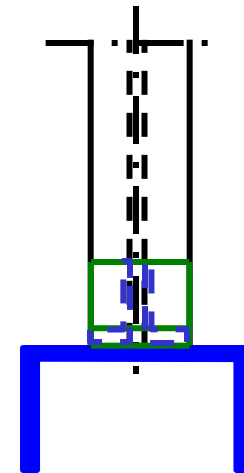
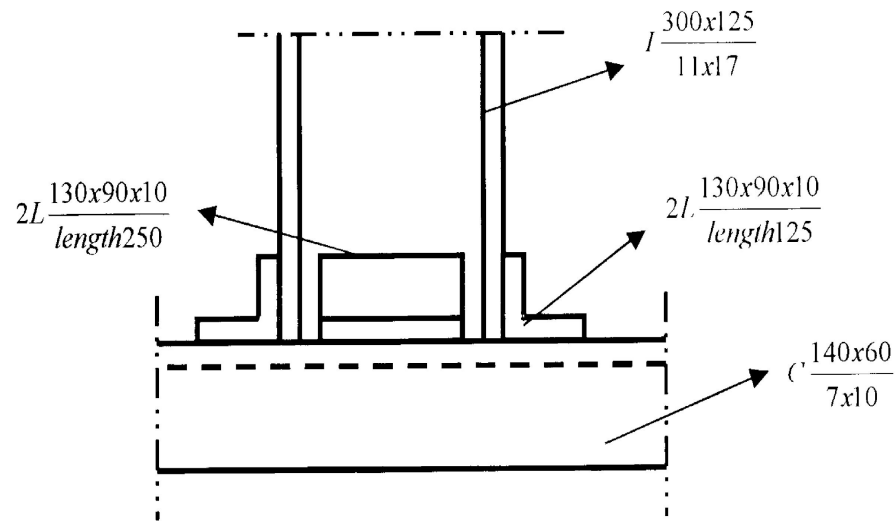
Views for vertical steel column

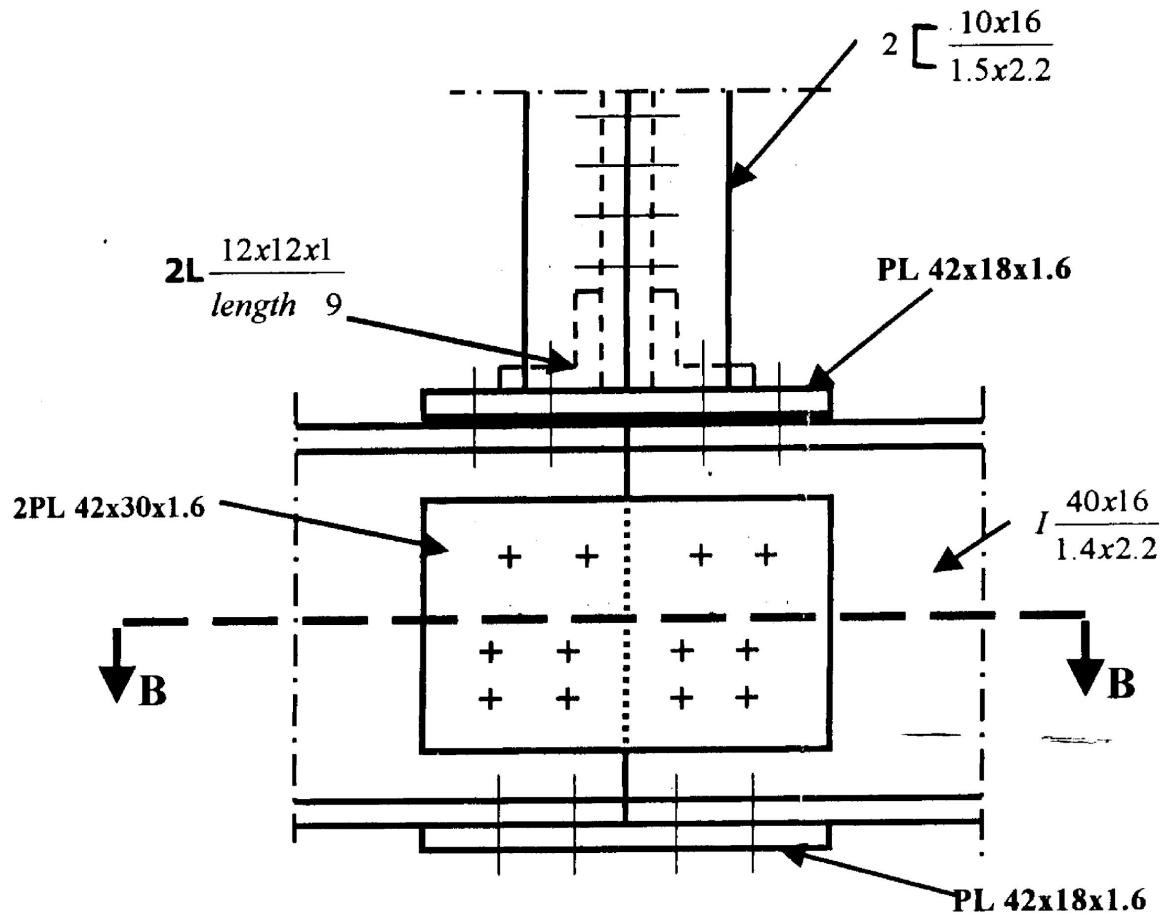




Exercise (5)

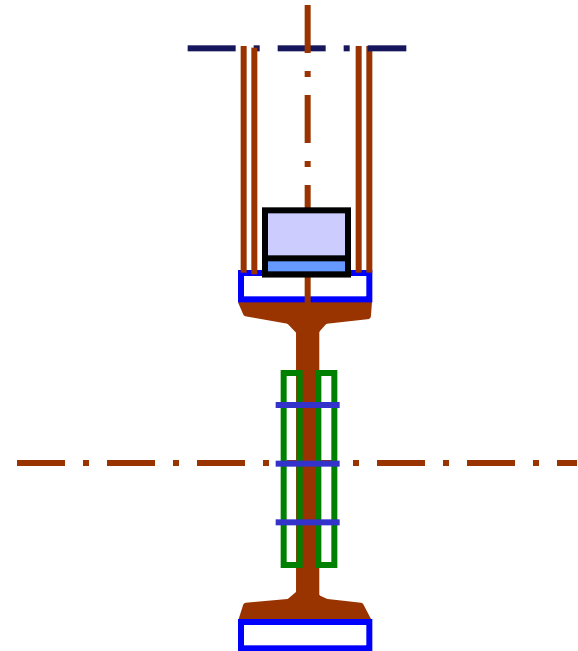
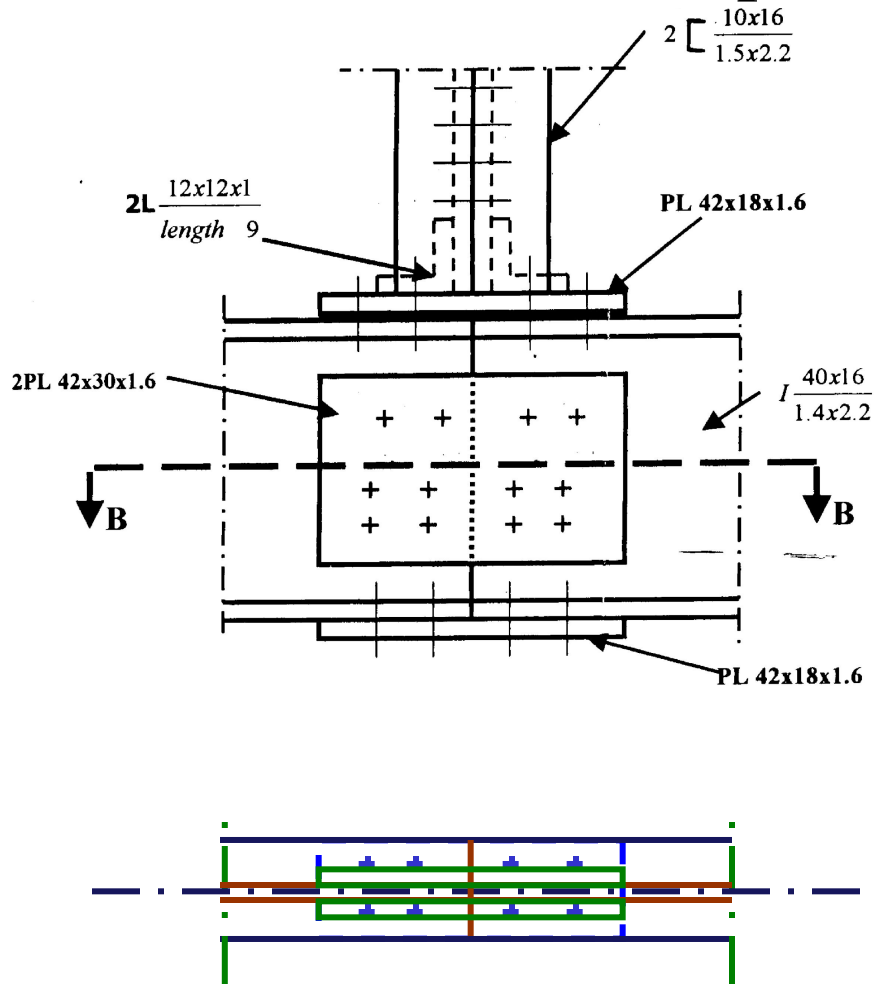
S.V. & plan from the elevation

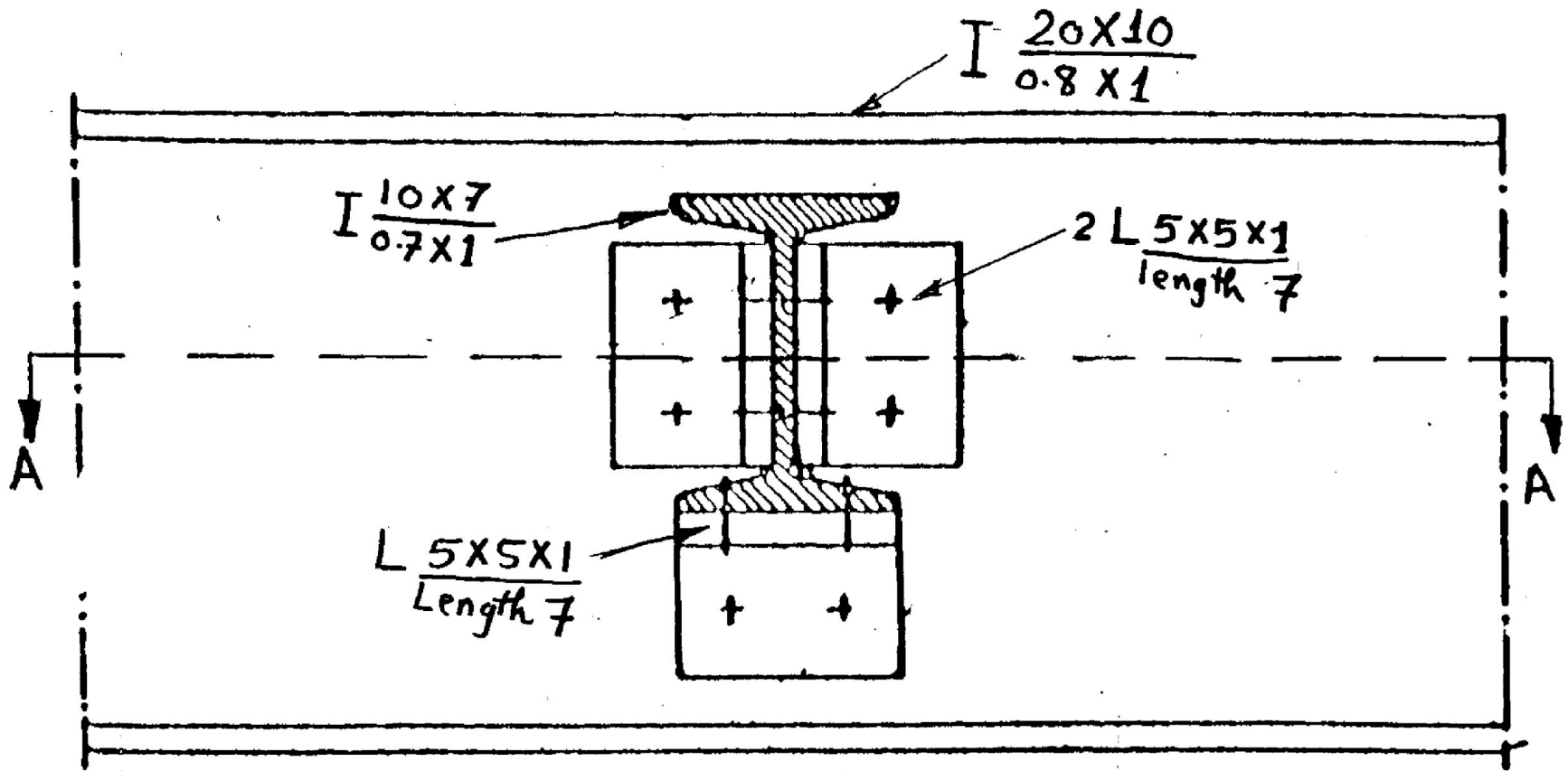




Exercise (6)

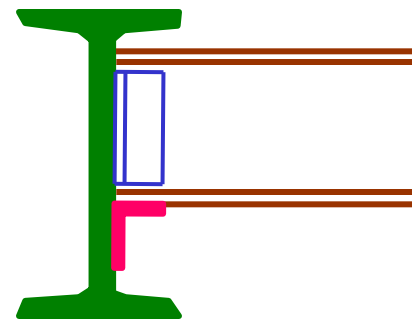
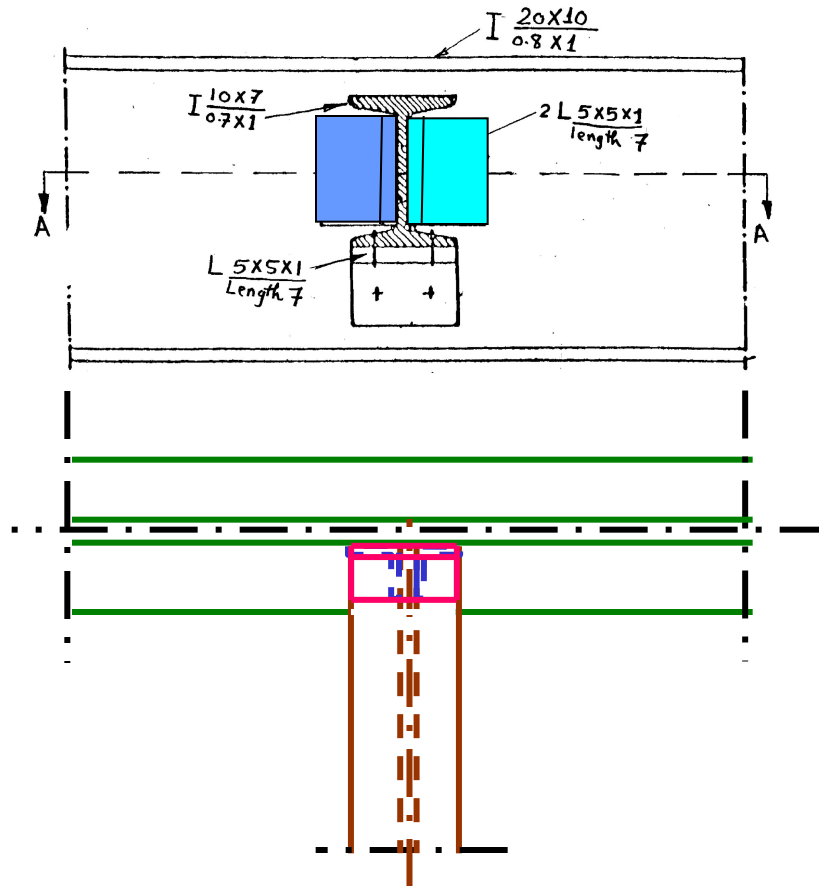
Side view & Sectional plan





Exercise (7)

S.V. & Sectional plan



Exercise (9)

S.V. & plan for perpendicular U-shape and I-section connection

