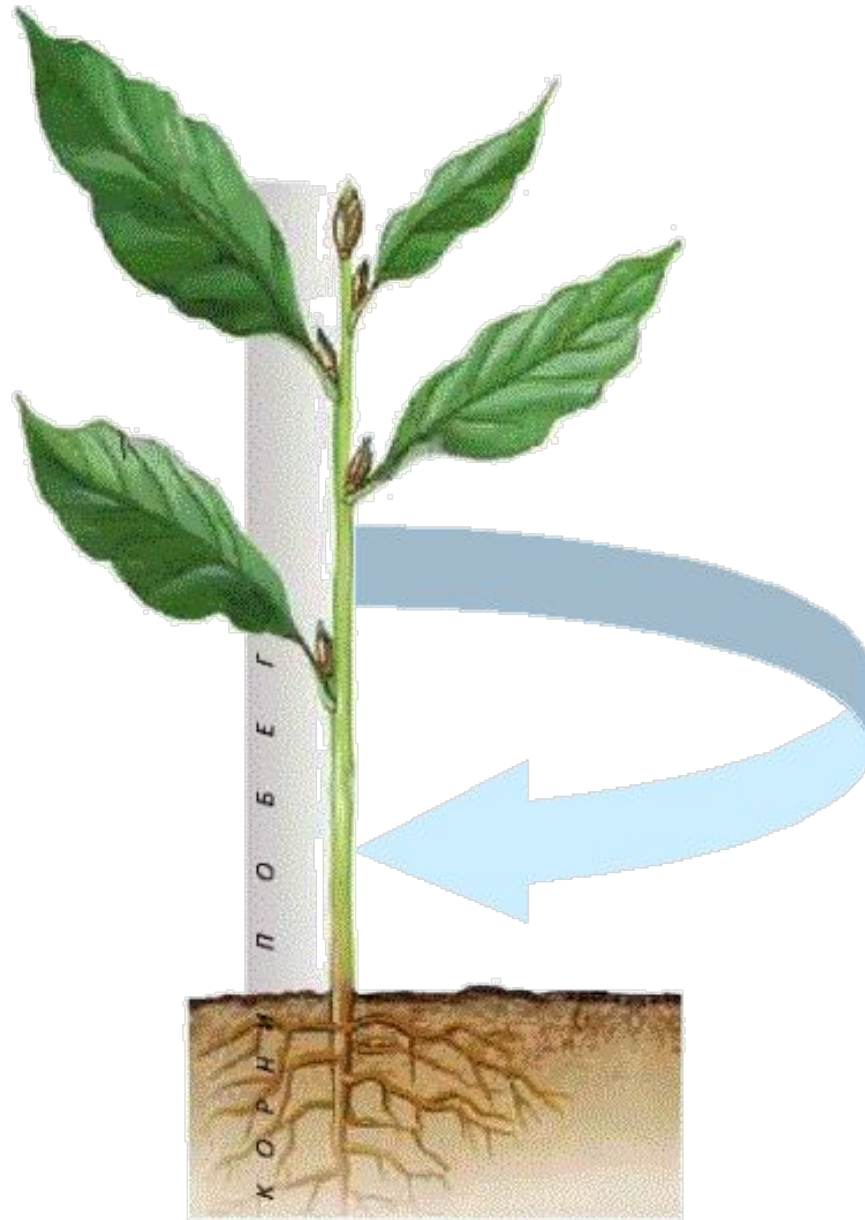


Pavlodar state pedagogical institute
Chair of General Biology

Stem. Inner structure.

Author: Nikitin Akim
I course
Bch-12 group student.

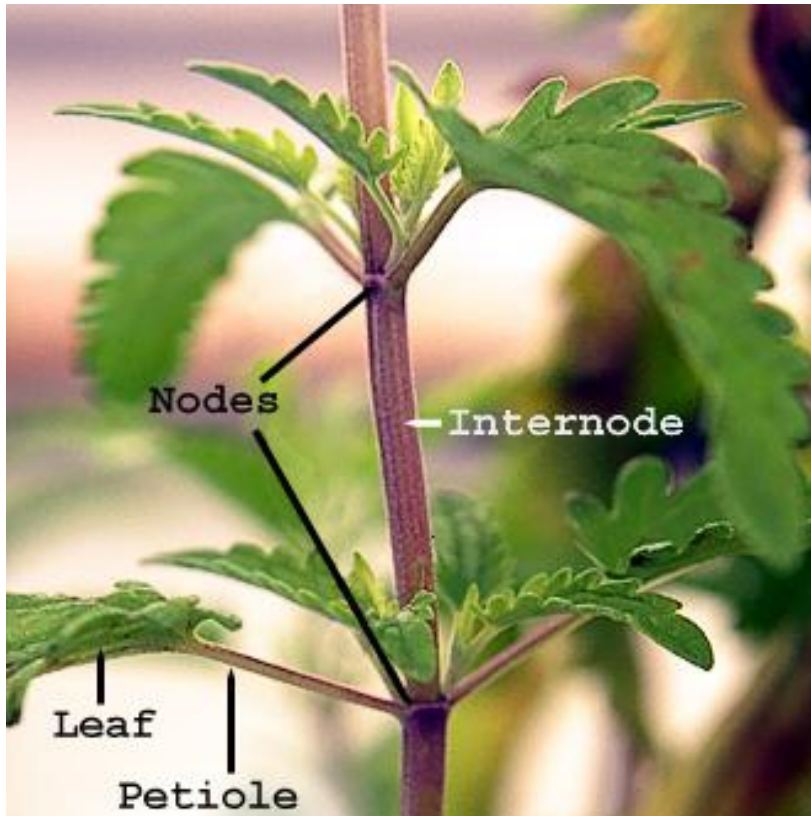


A **stem** is one of two main structural axes of a vascular plant, the other being the root.

Stem function:

- Transport
- Support
- Store
- Photosynthesis

Stems consist of nodes and internodes



The nodes hold one or more leaves, as well as buds which can grow into branches.

The internodes distance one node from another.

upload.wikimedia.org Plant_nodes_c.jpg (330x360)

Stems diversity

- Erect
- prostrate- stem lies on the surface of the soil, not rooted.
- creeping - stems trail over the ground and take root.
- clinging - attached to the support by means of tendrils.
- curly - thin stems, wrapped around a support.



Erect(*Heliānthus*)



Prostrate(*Lysimachia nummularia*)

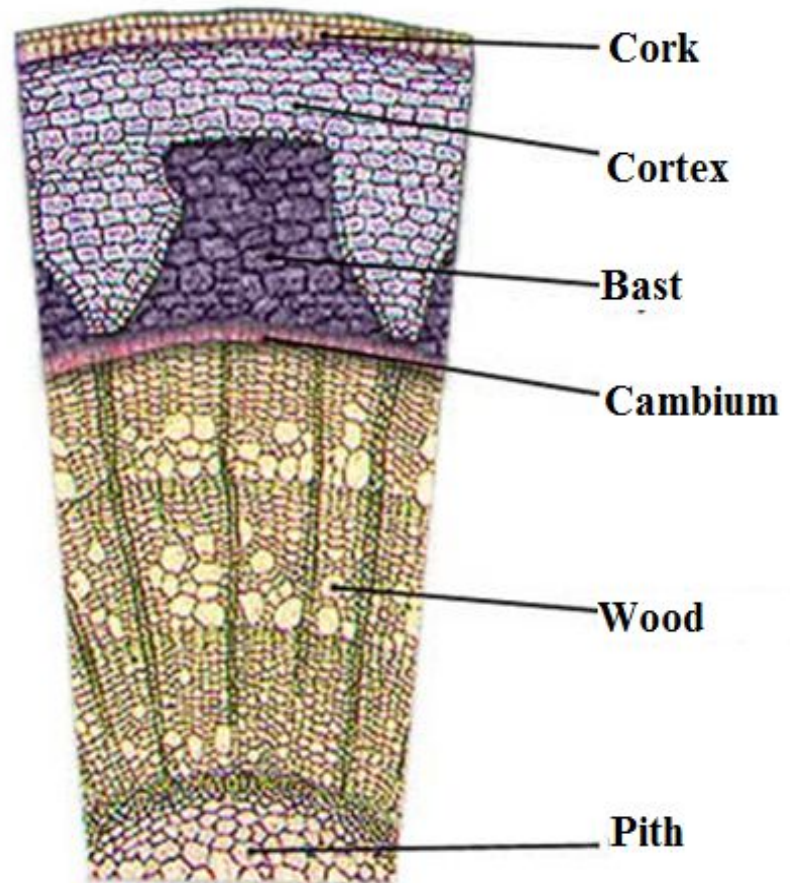
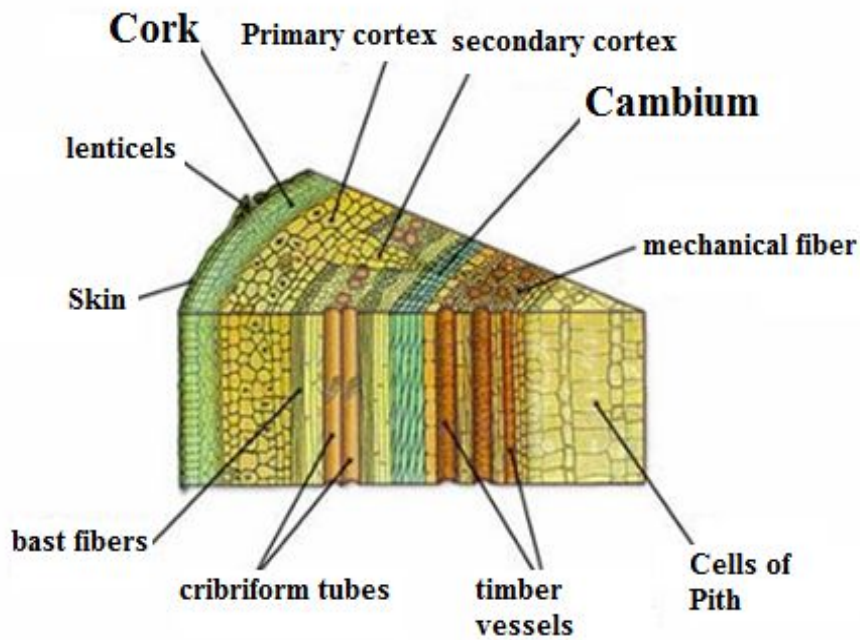


Clinging(*Písum*)



Creeping(*Lycopódium*)

Inner structure of Stem



Thank you for attention