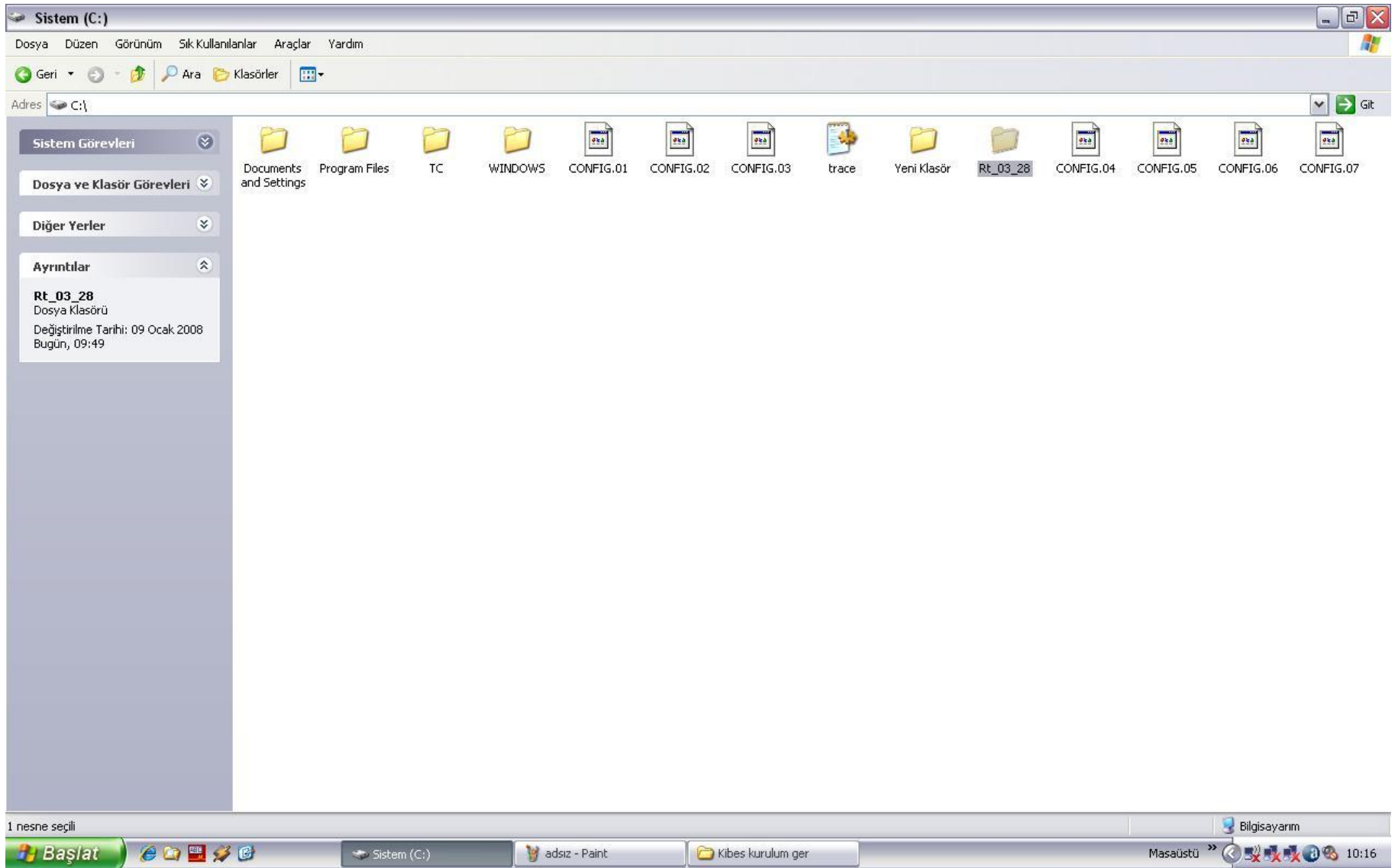
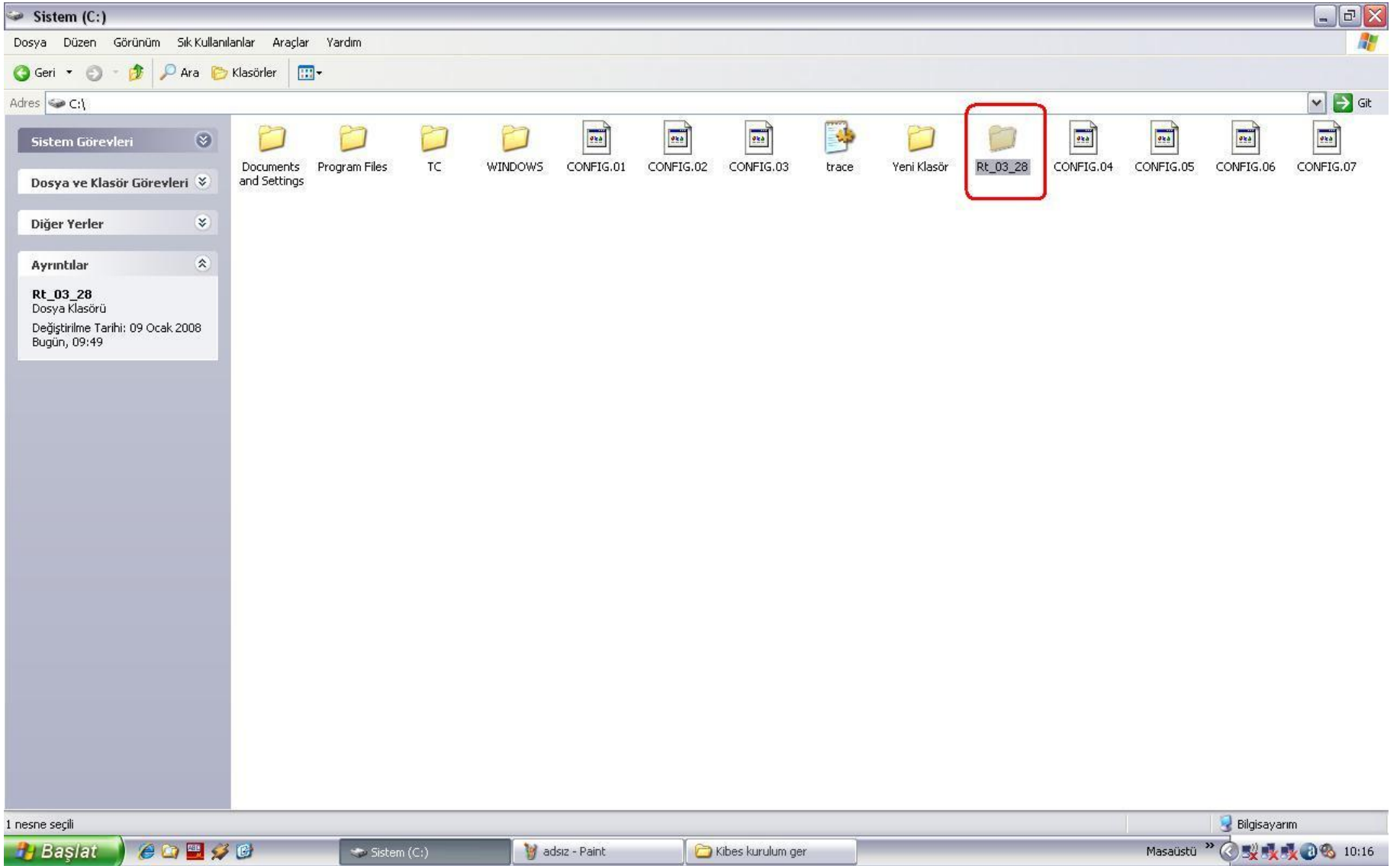


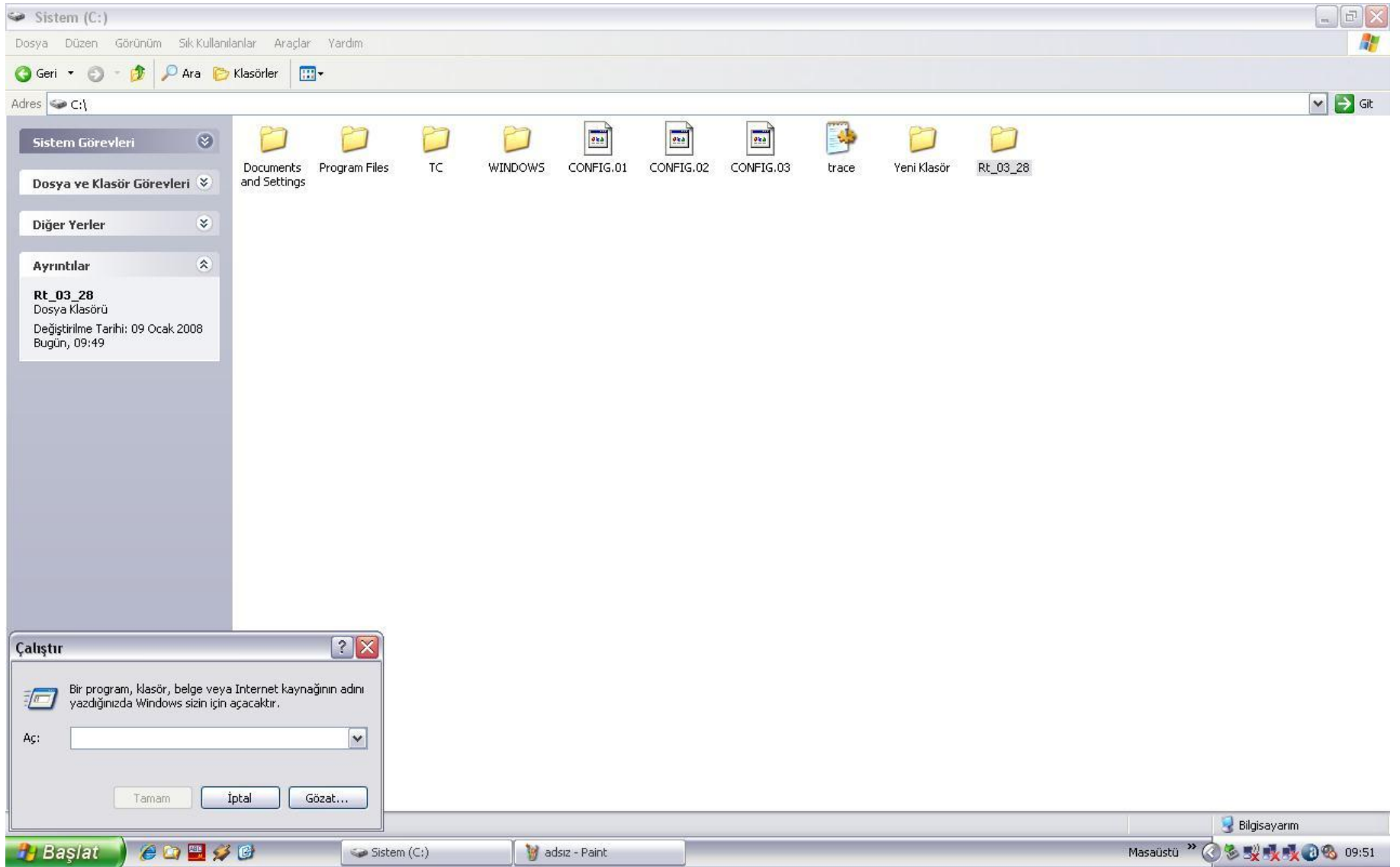
# Installation Kibes Run Time Program



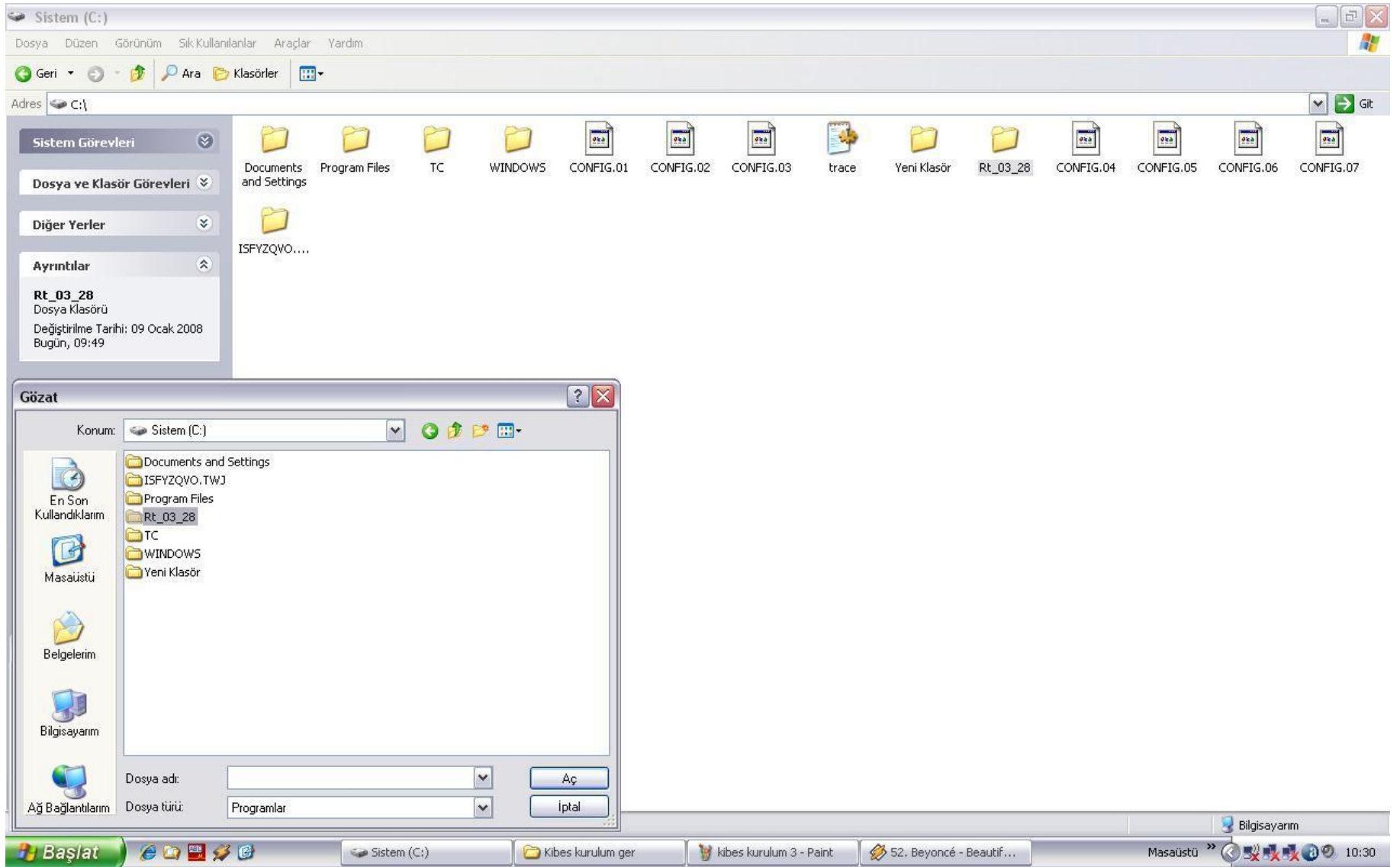


For Kibes Run Time installation, firstly copy the sent file that is named Rt\_03\_28, and paste it to your disc (C:\)

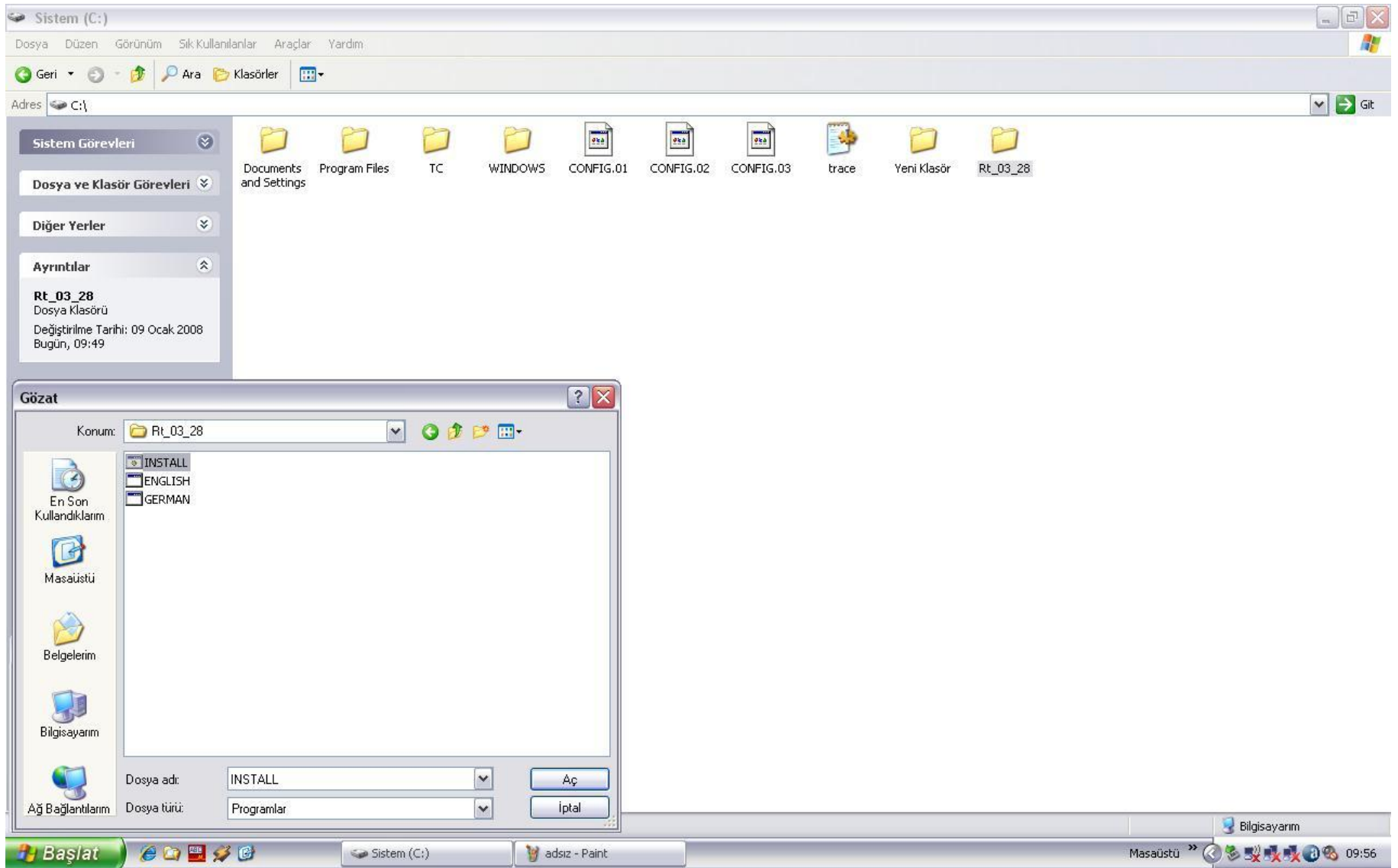




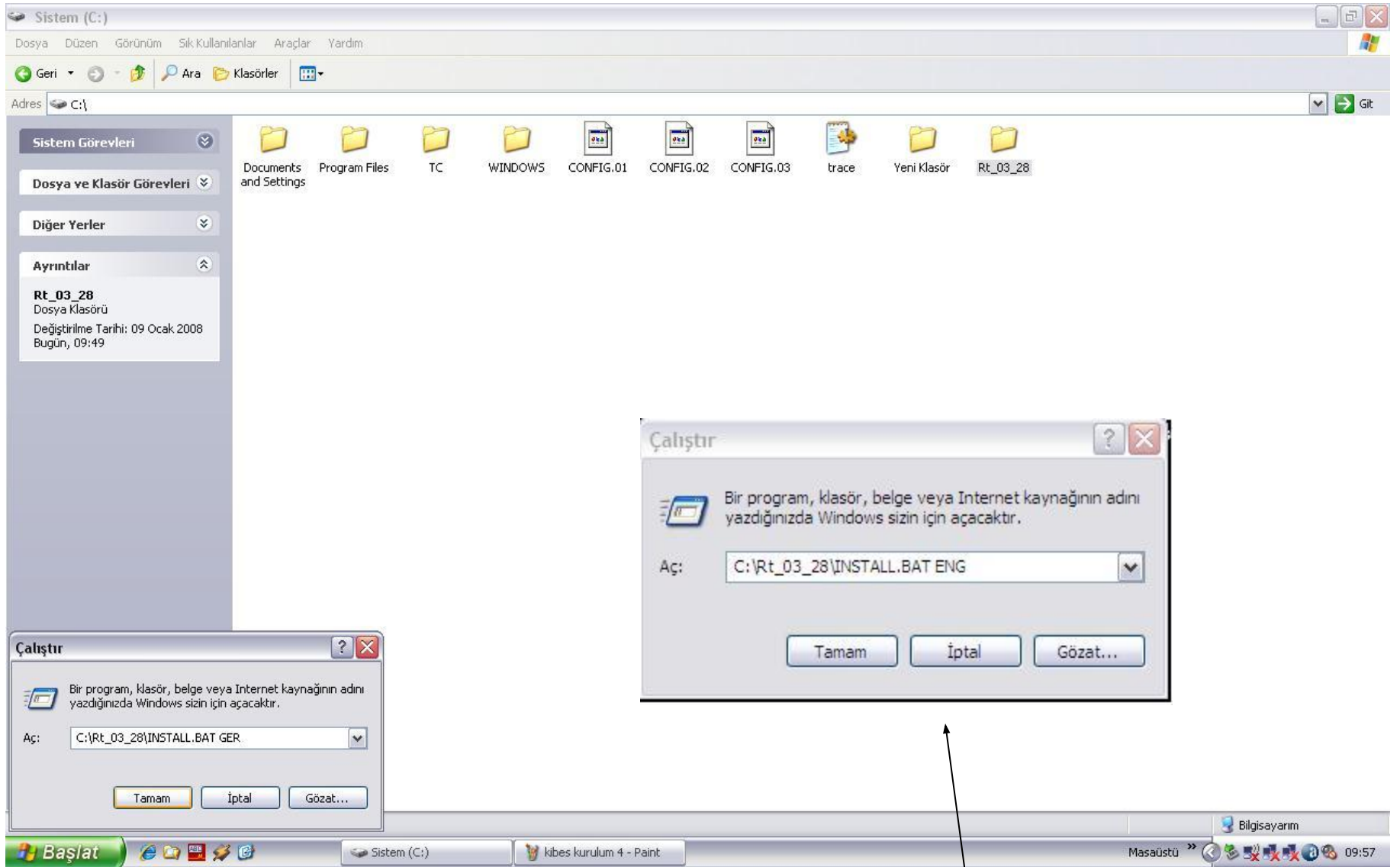
Then press "Run" command in Start menu



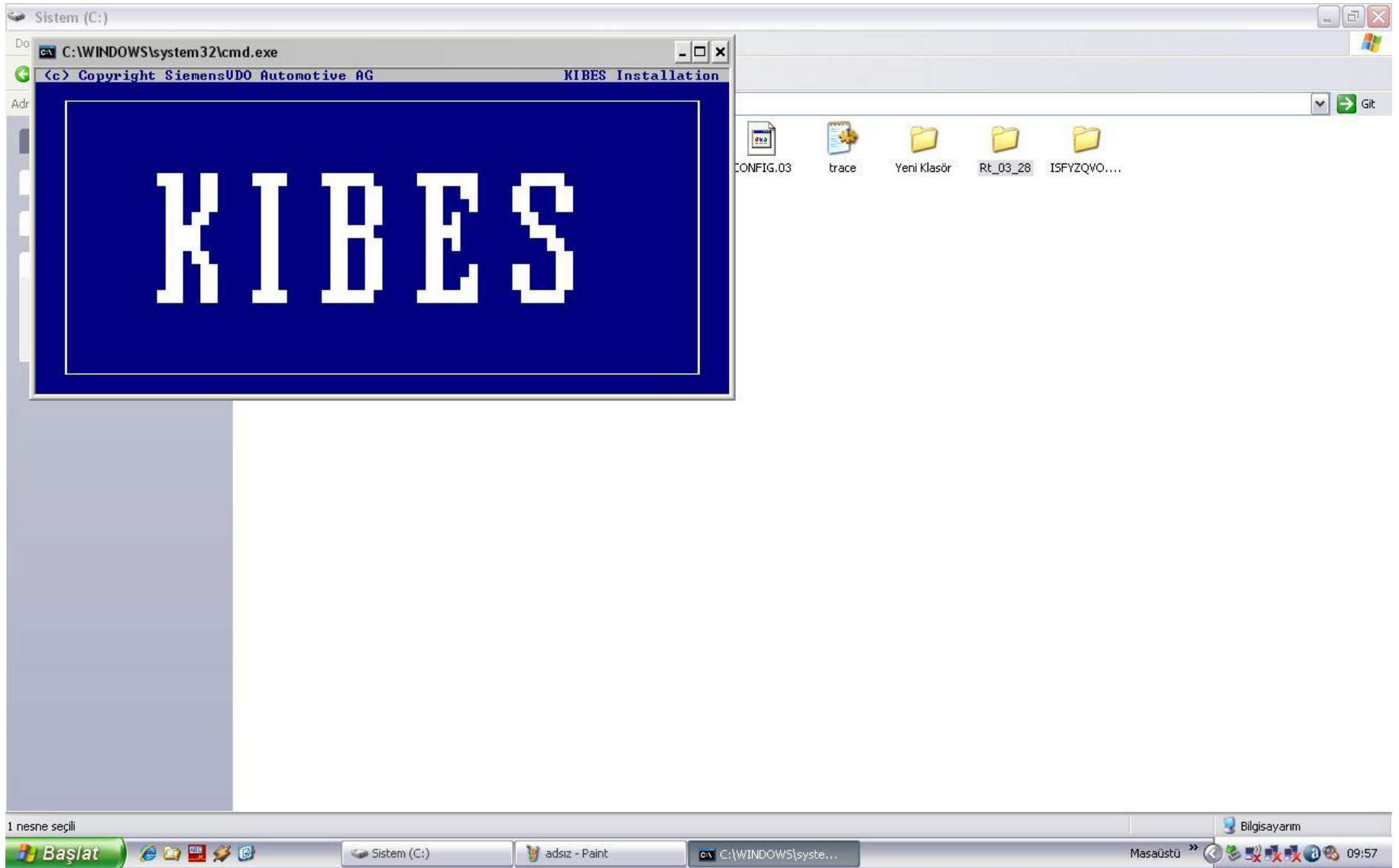
Press "Browse" button, select the C:\Rt\_03\_28 and open file



Select 'INSTALL' exe. file and press open button

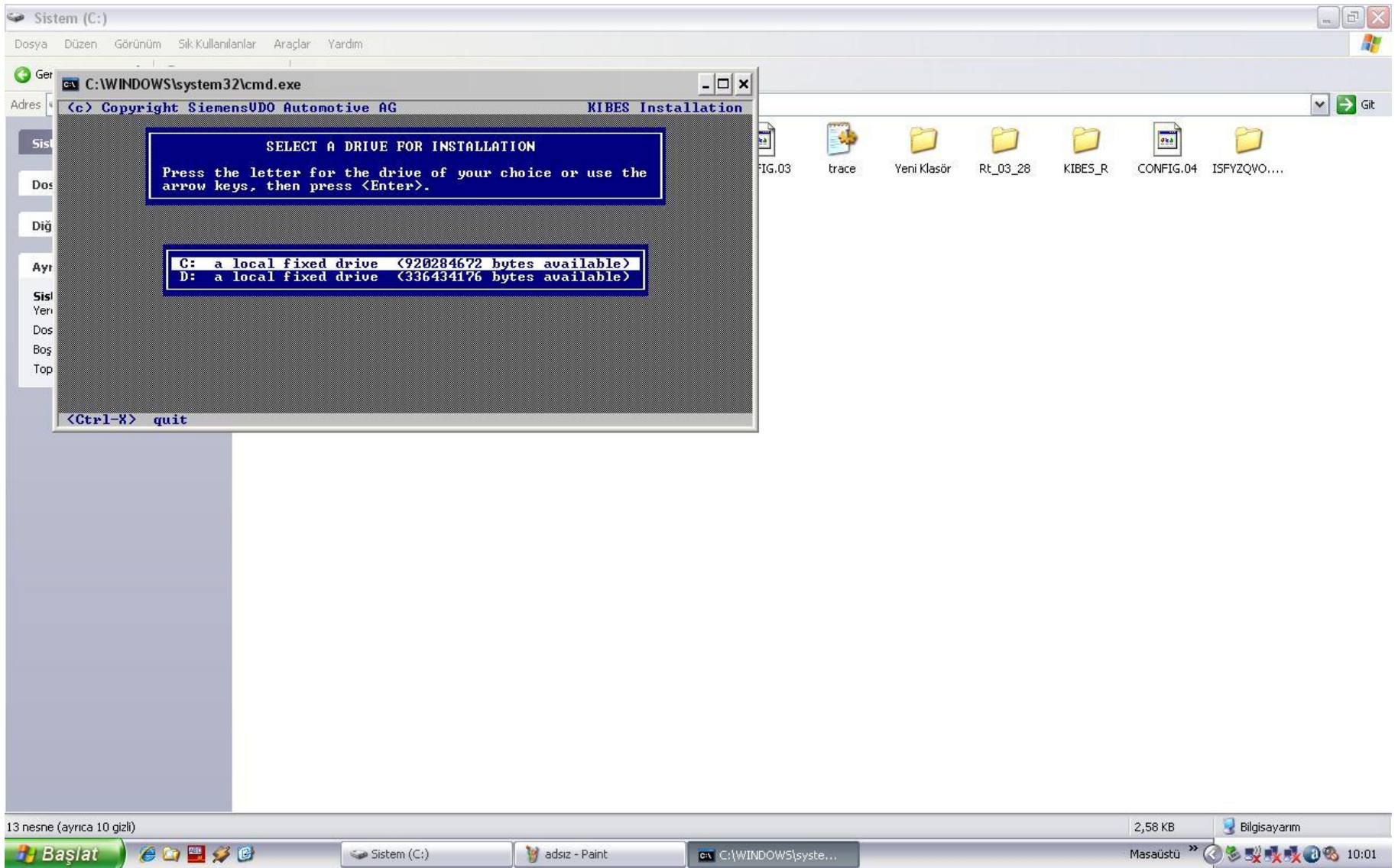


Press space and write ENG to the end of the command (C:\Rt\_03\_28\INSTALL.BAT) that is shown on screen.

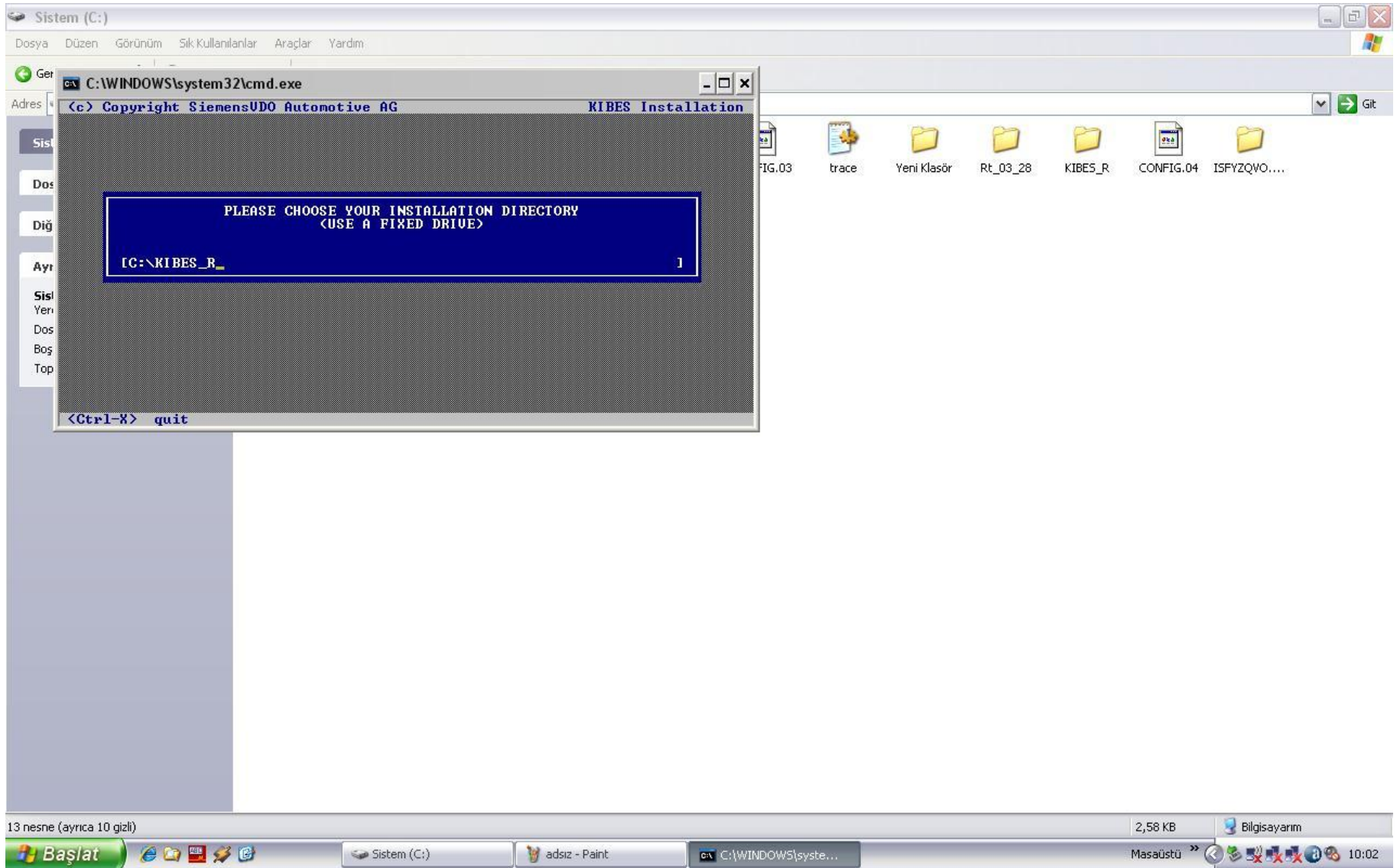


This window is shown on screen

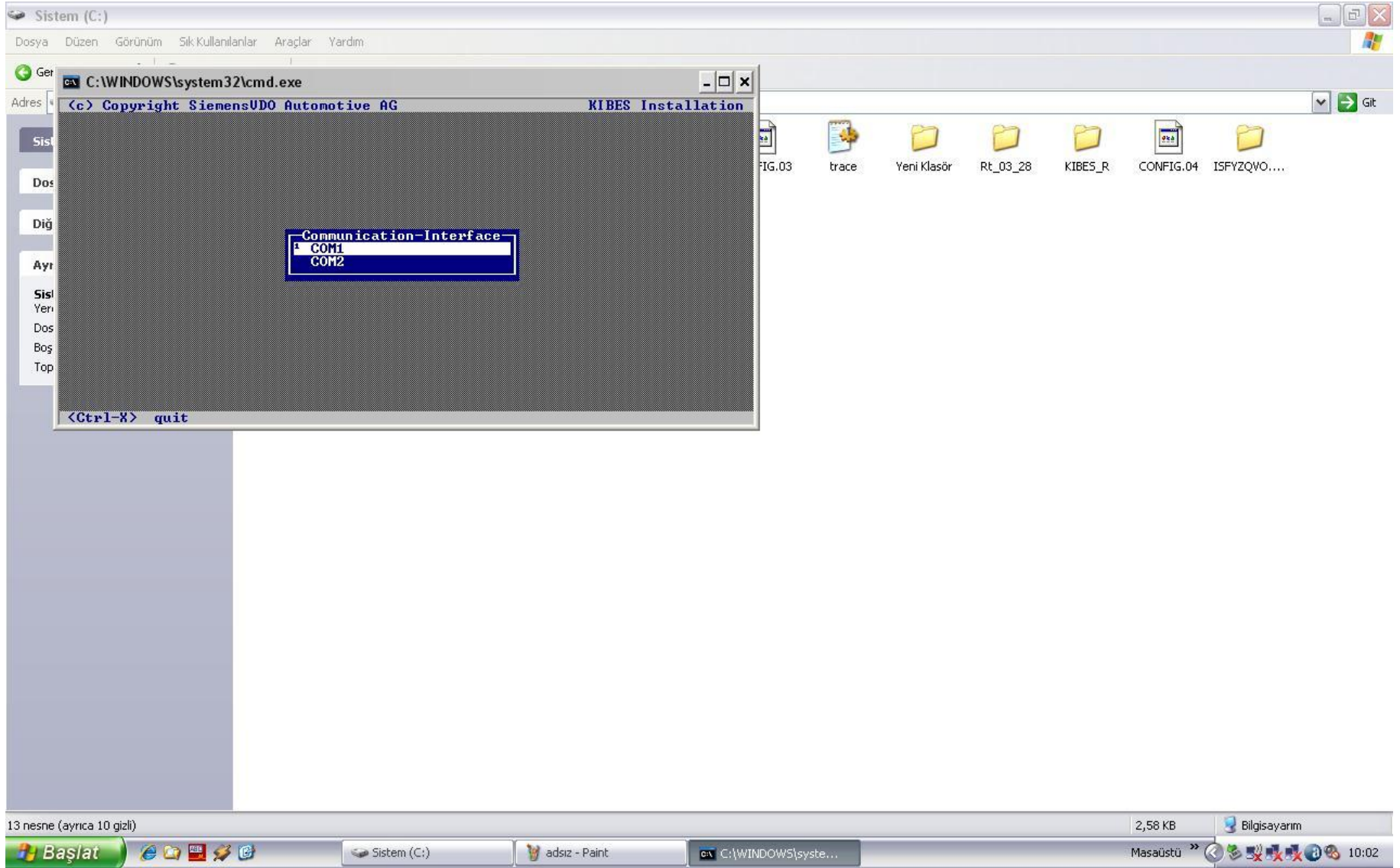




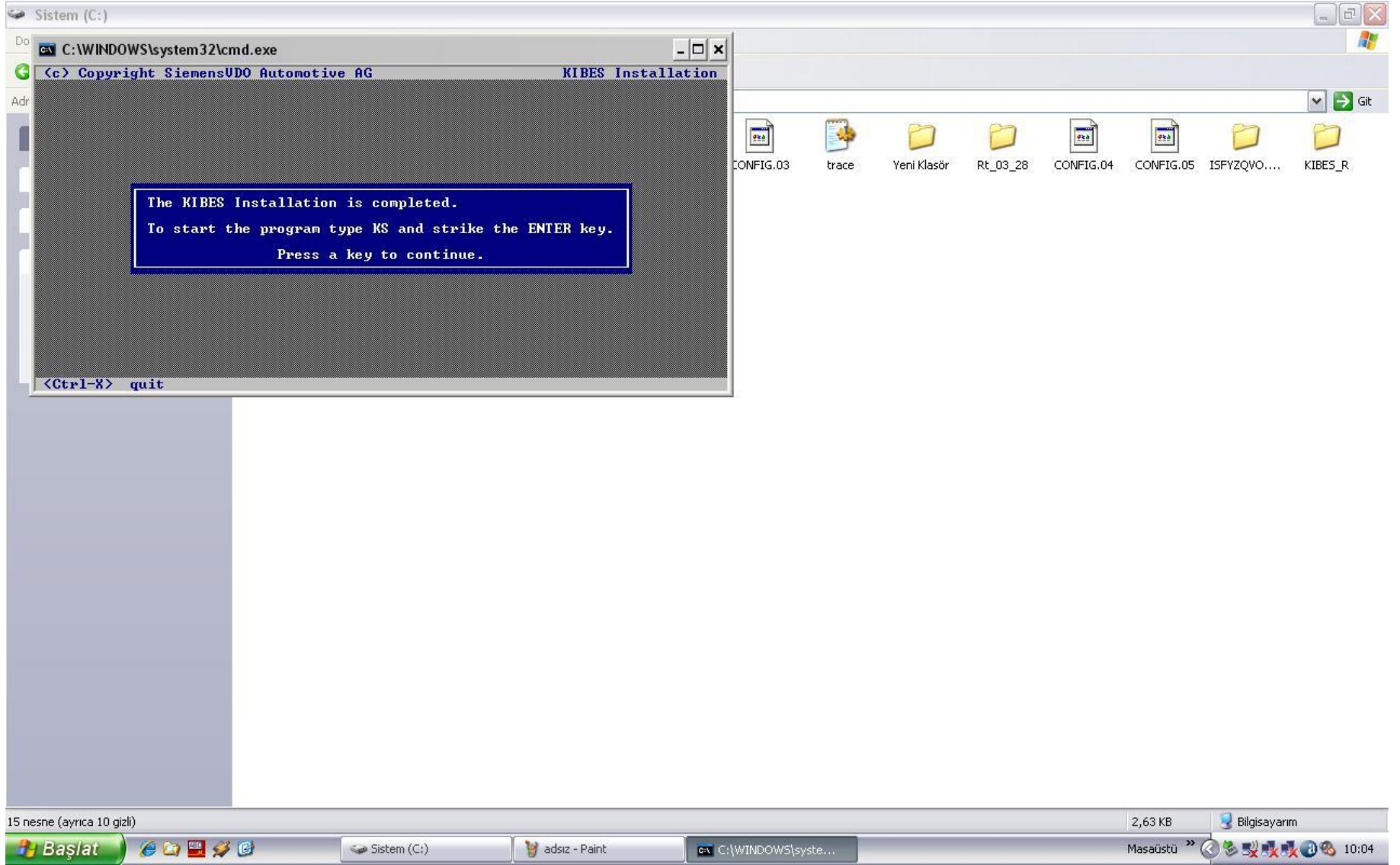
After a few seconds, new window is shown on, select part of C and press enter



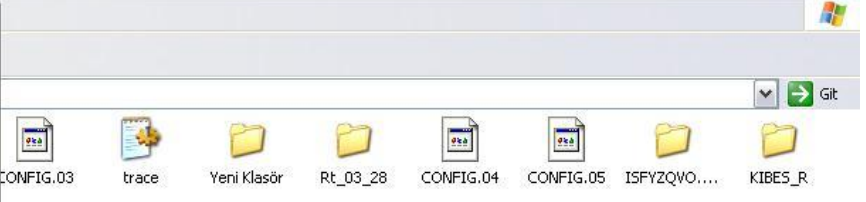
[C:\KIBES\_R] is shown on screen. Press enter



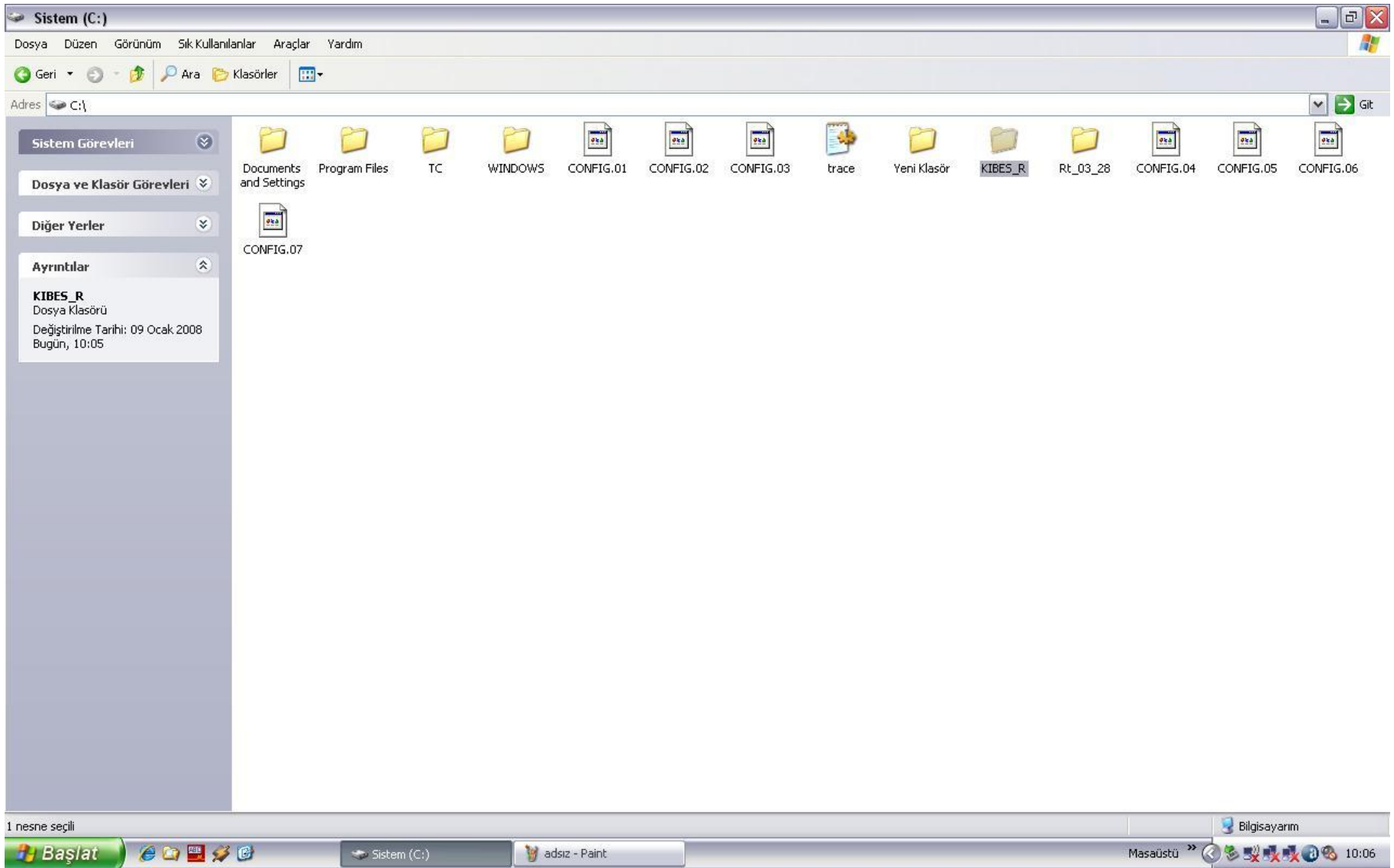
Select COM1 and press enter again



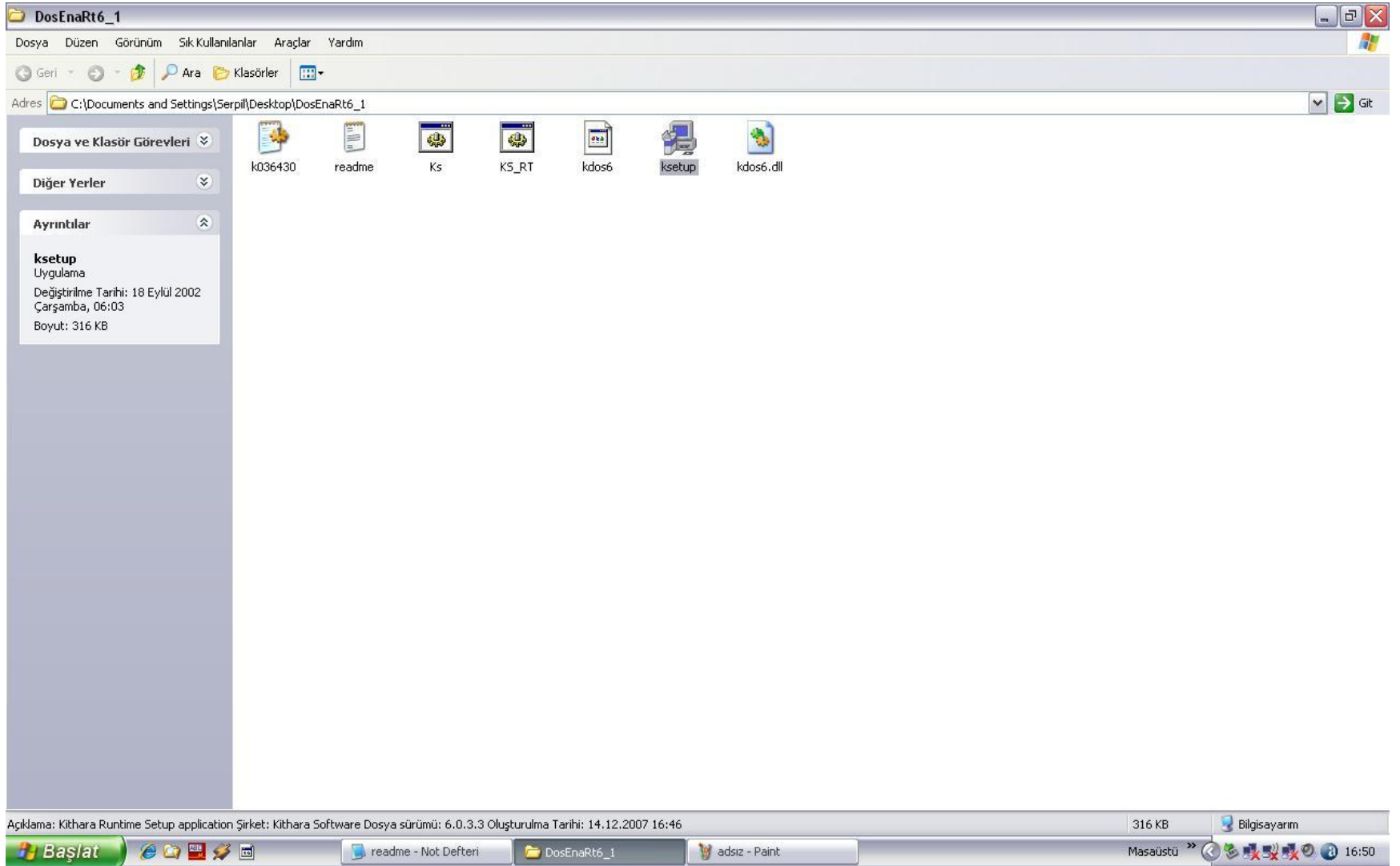
```
C:\WINDOWS\system32\cmd.exe  
<c> Copyright SiemensUD0 Automotive AG KIBES Installation  
  
Please remember to reboot your computer.  
Press a key to continue.  
  
<Ctrl-X> quit
```



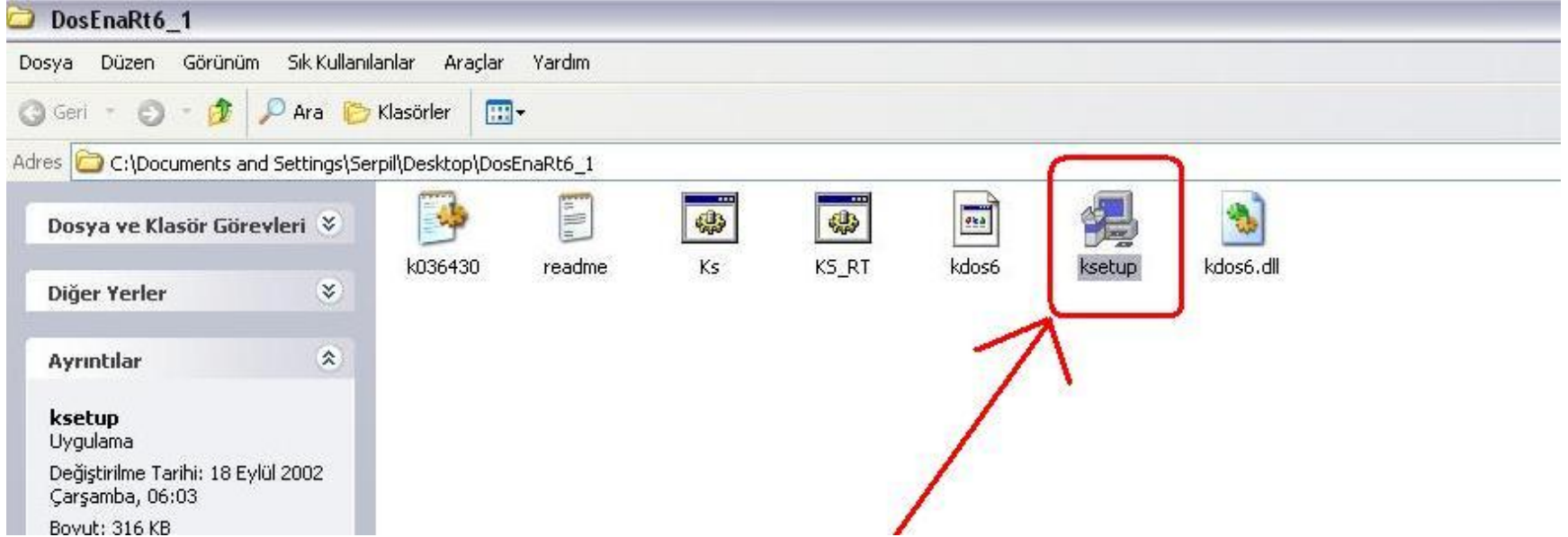




After the installation, the next program that is named DosEnaRt6\_1, must be installed. This program is installed to make Kibes enable for Windows NT, 2000 and XP

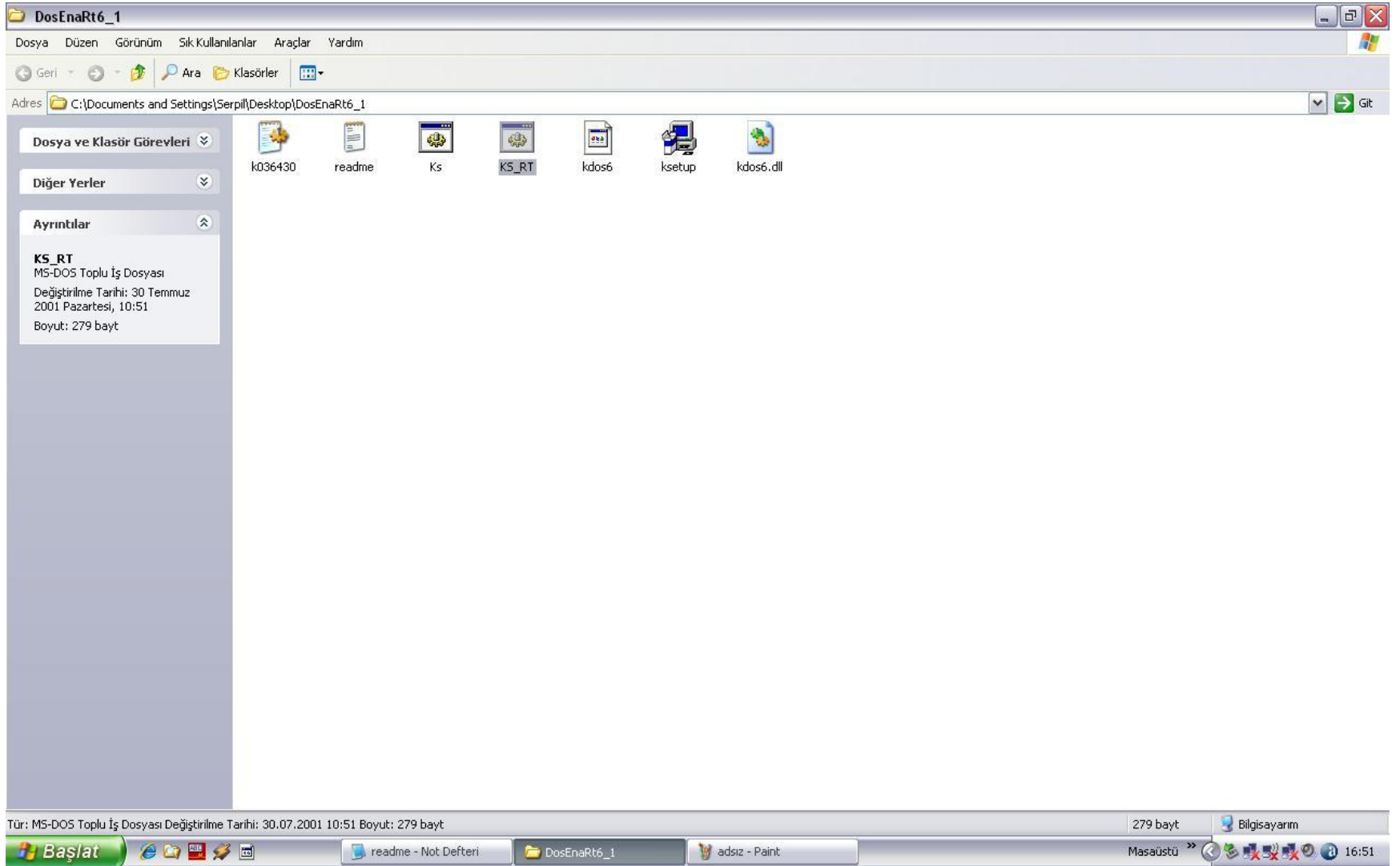


Firstly, open DosEnaRt6\_1

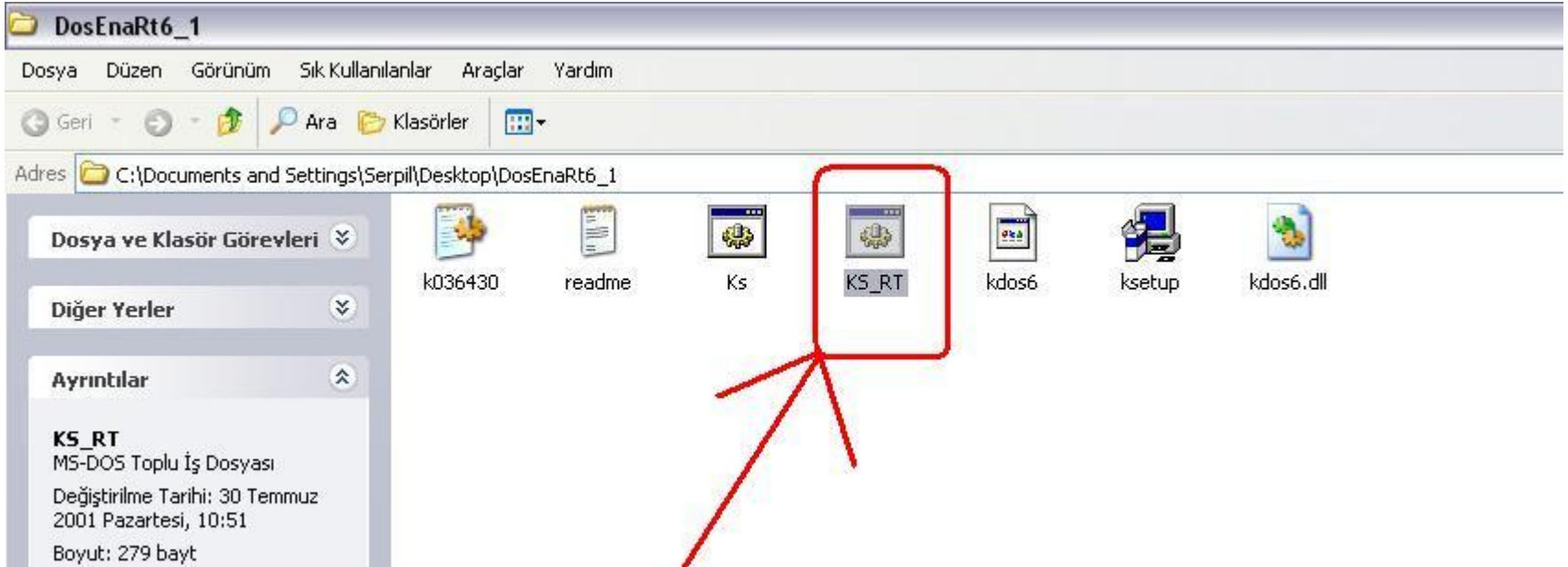


Start ksetup.exe

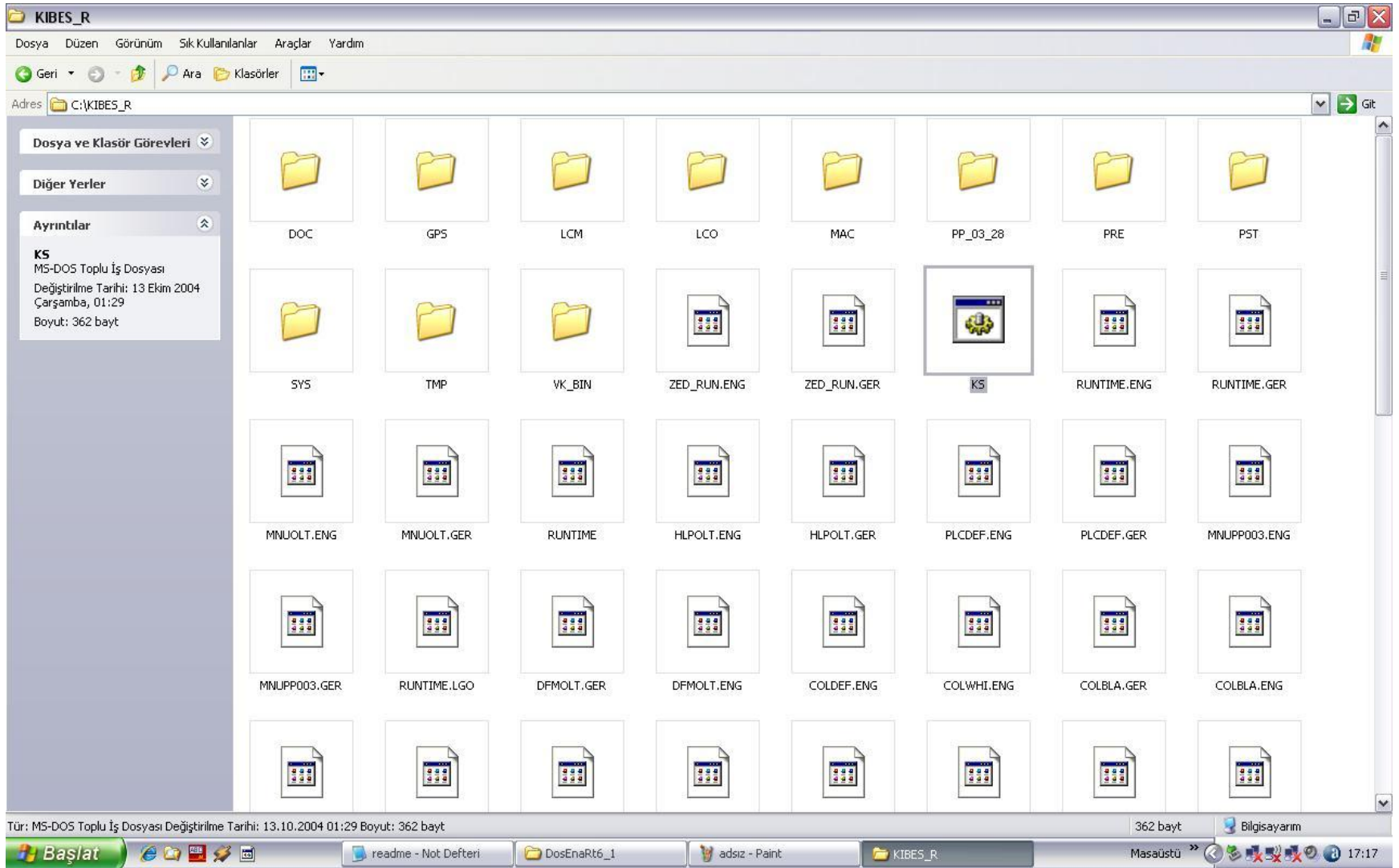




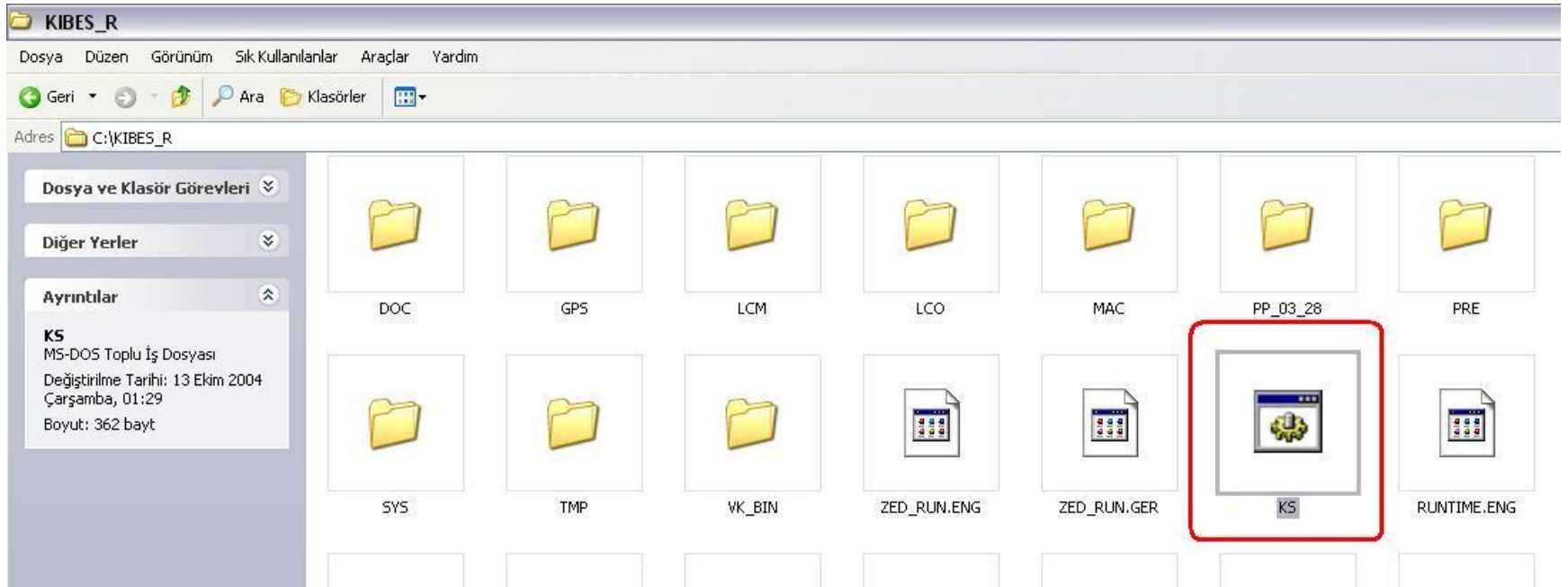
Choose KS\_RT.bat file



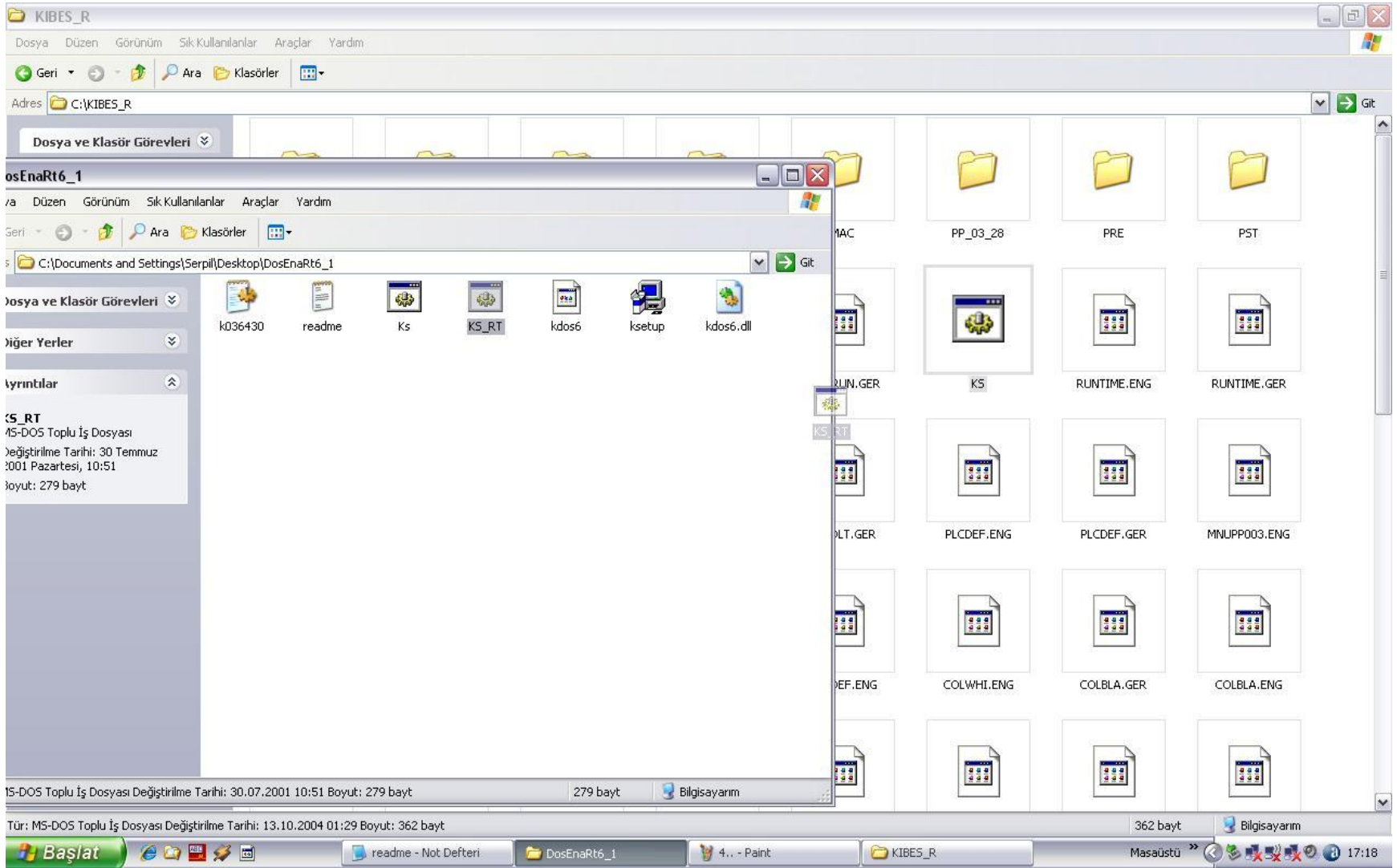
And copy it



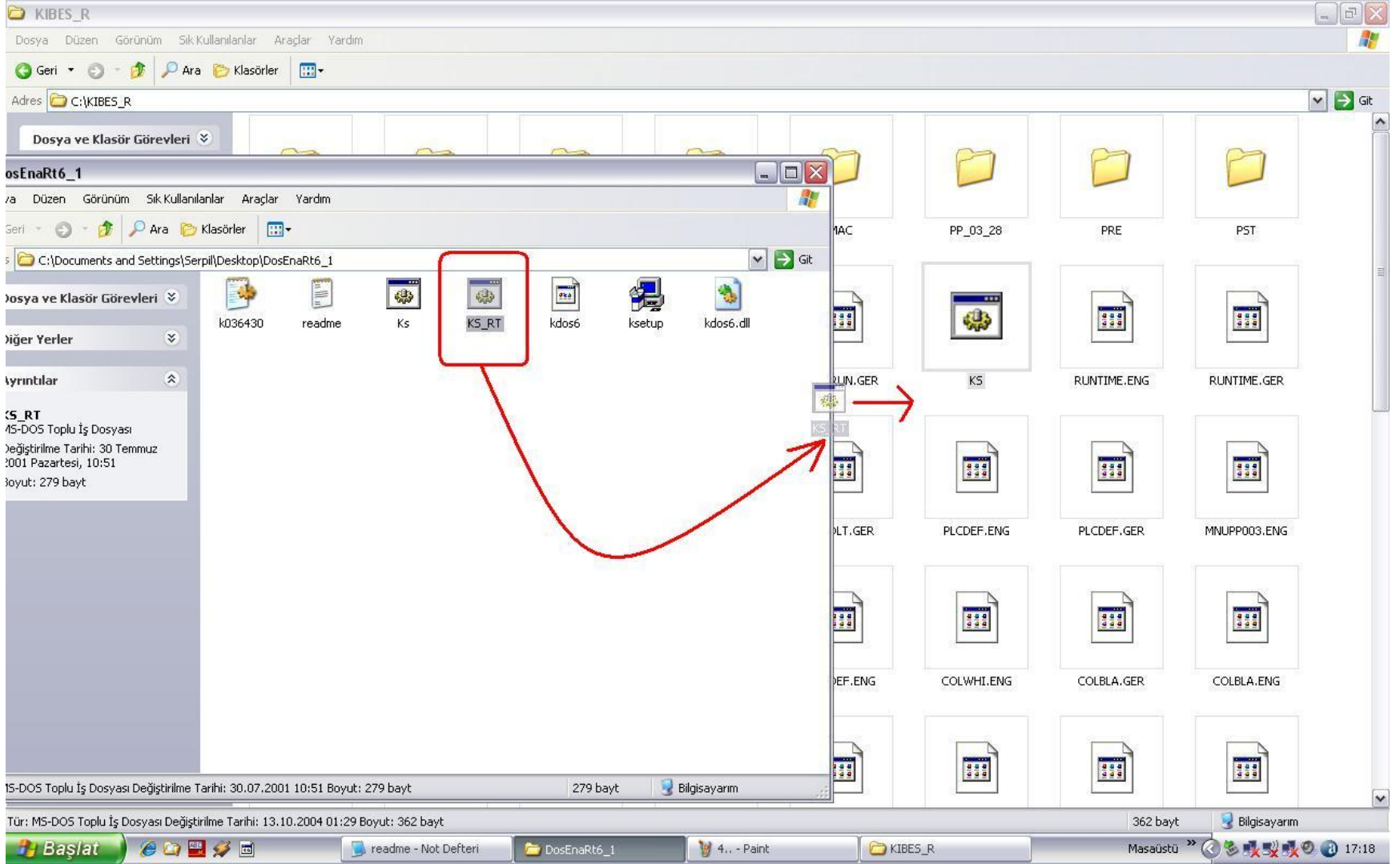
Then open KIBES\_R file ( C:\KIBES\_R). (Before, we have installed this file at your computer).



Choose KS.bat file



Then substitute KS.bat with delivered KS\_RT.bat

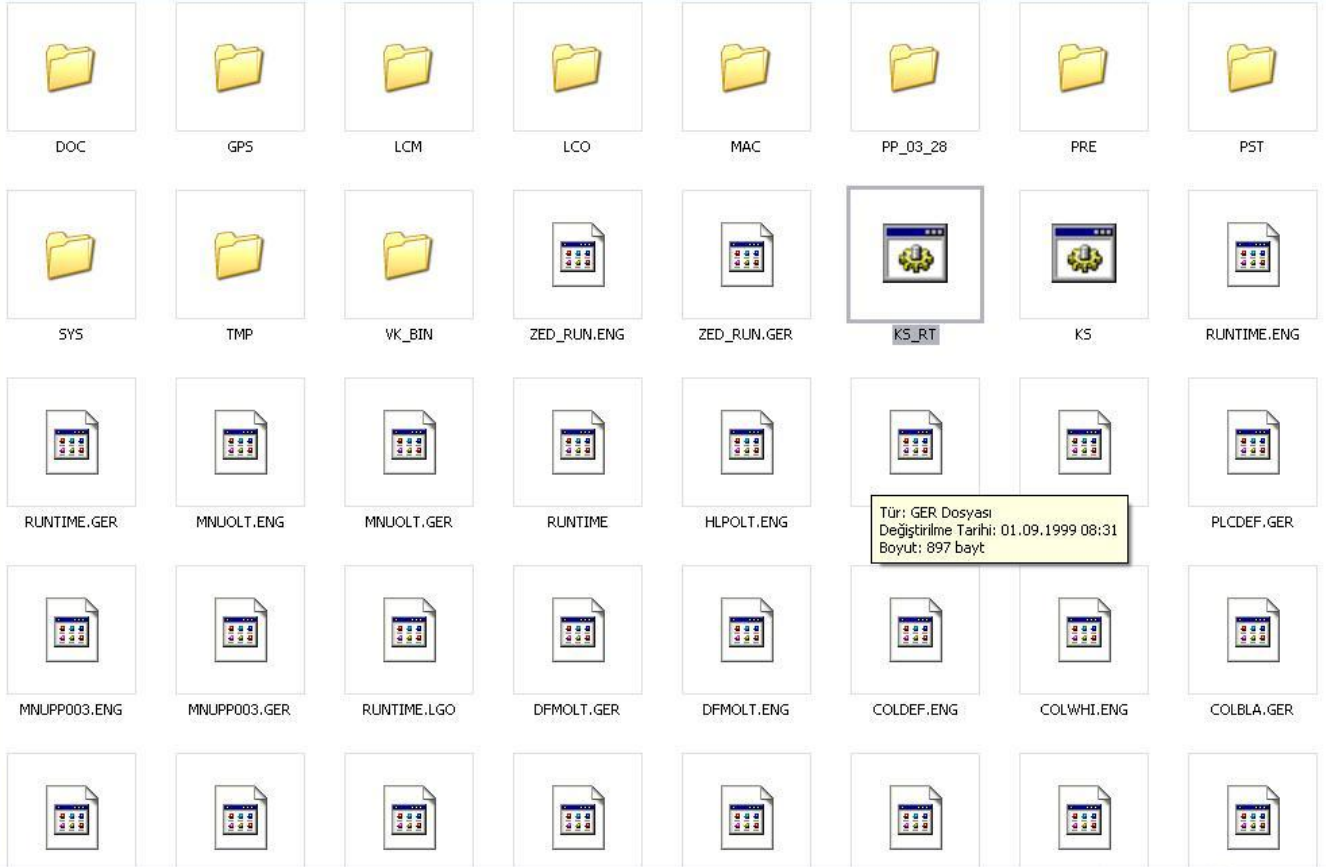


Dosya ve Klasör Görevleri

Diğer Yerler

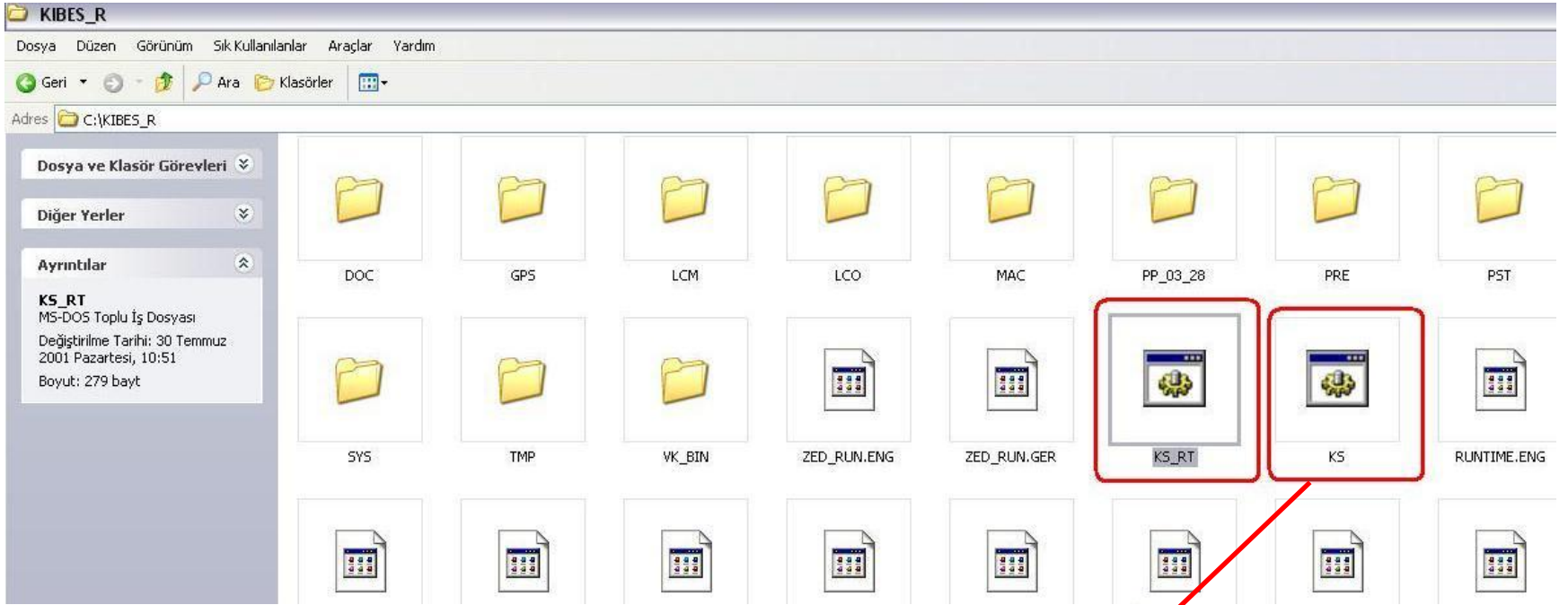
Ayrıntılar

**KS\_RT**  
MS-DOS Toplu İş Dosyası  
Değiştirilme Tarihi: 30 Temmuz  
2001 Pazartesi, 10:51  
Boyut: 279 bayt



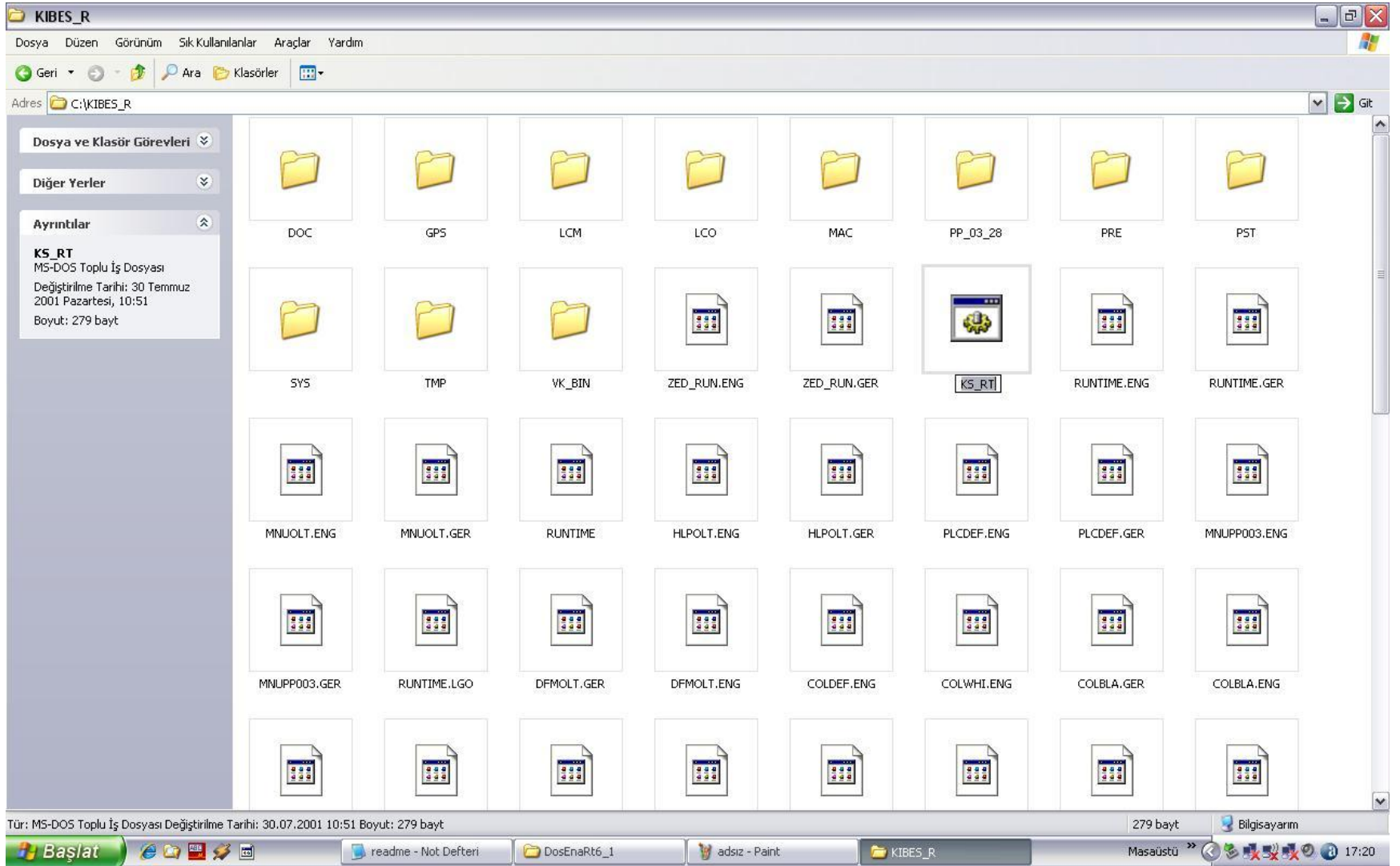
Tür: GER Dosyası  
Değiştirilme Tarihi: 01.09.1999 08:31  
Boyut: 897 bayt



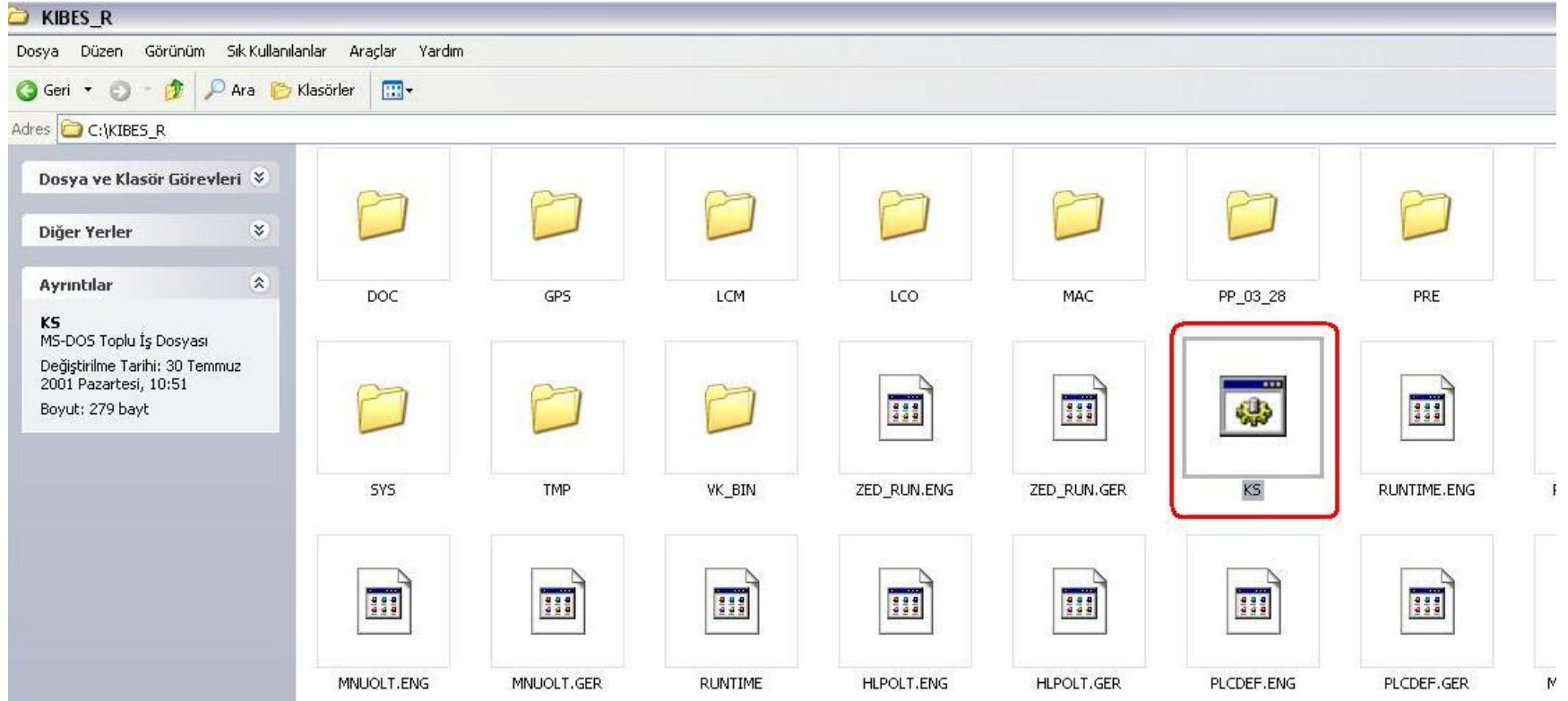


Delete old KS.bat file





And rename KS\_RT to KS



Now, Kibes Run Time program will work effectively.