

[Westlake] SOP of Image Download

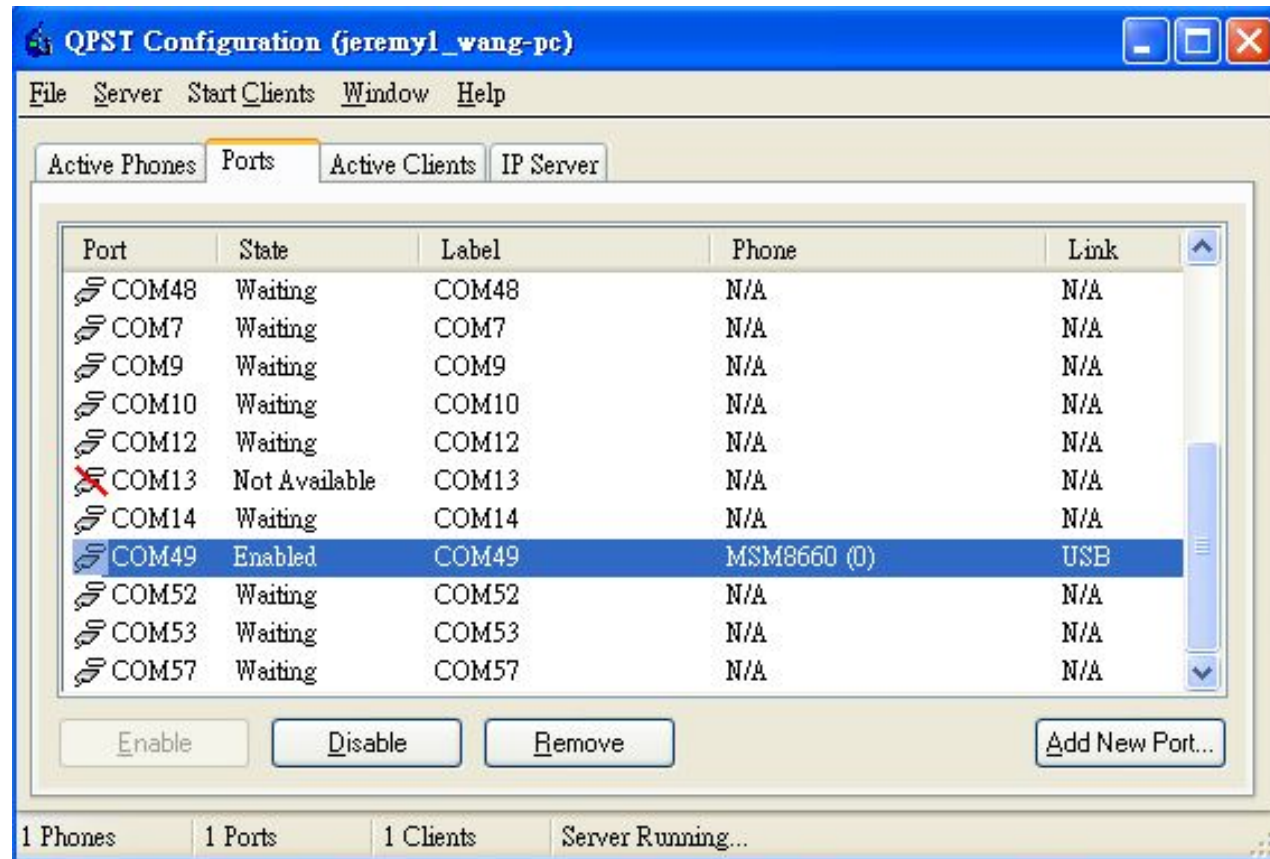
BU15-SW Div
2012/2/3

QCN and system data backup

Copyright Pegatron Ltd. 2008 All rights reserved.

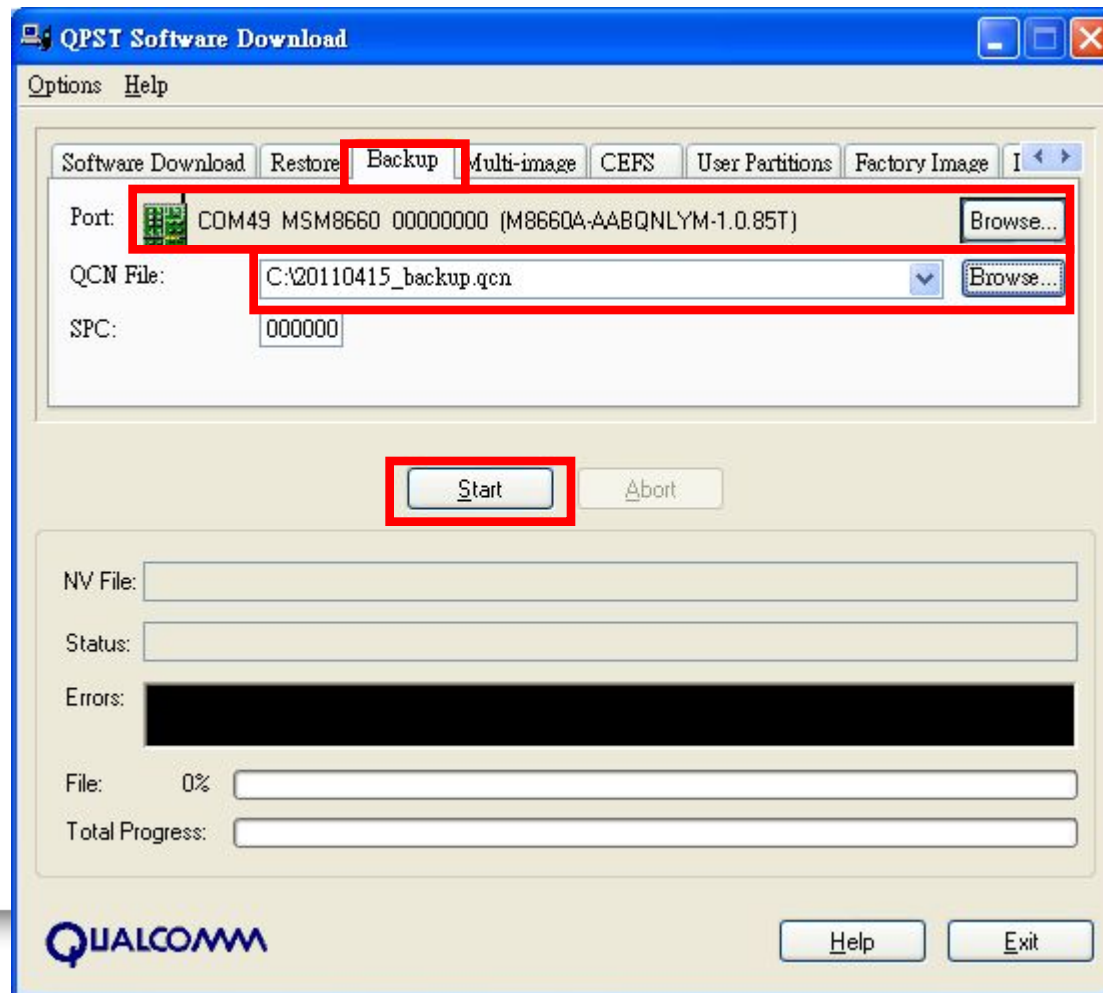
QPST CONFIGURATION

- Check com port setting is as following:



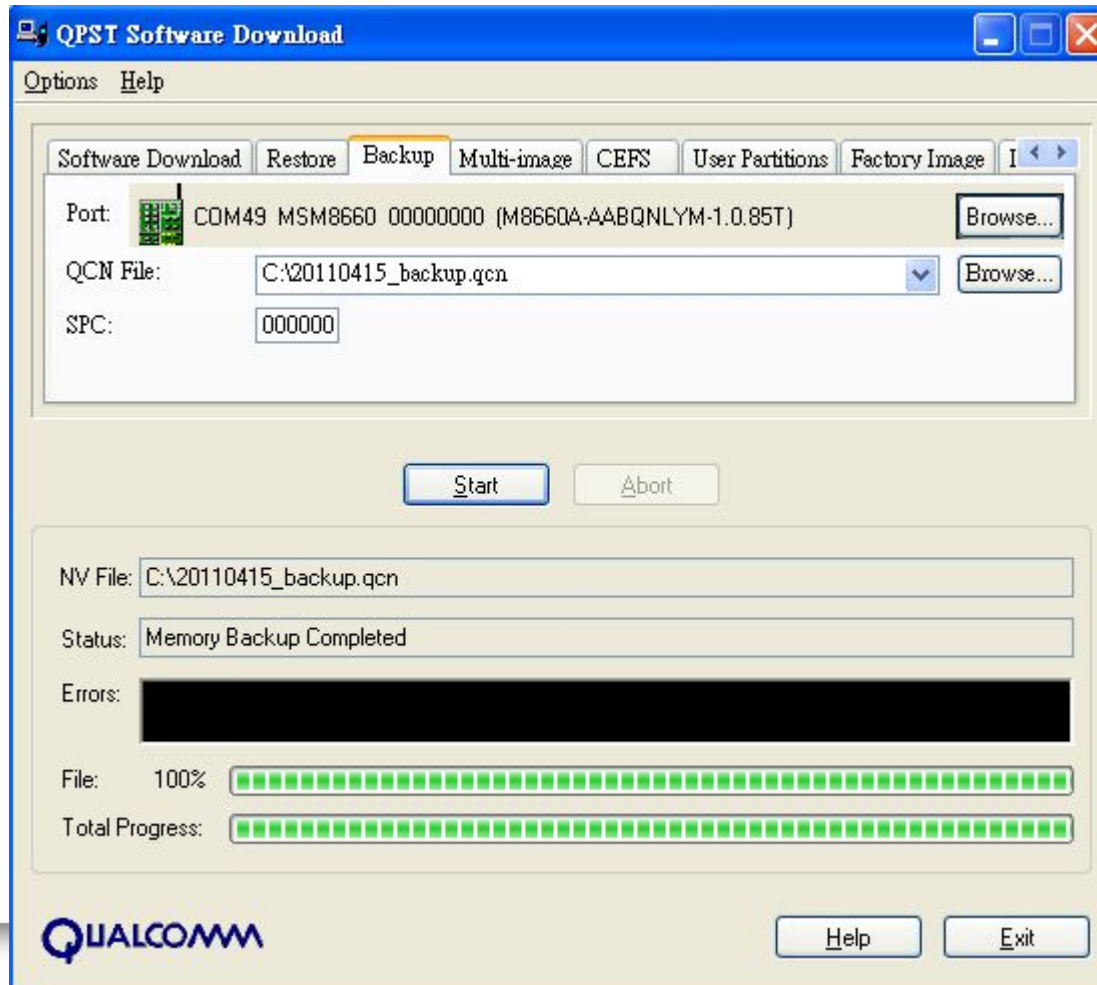
QPST Backup 1.

- Check com port setting is as following, and where the location you want to backup.



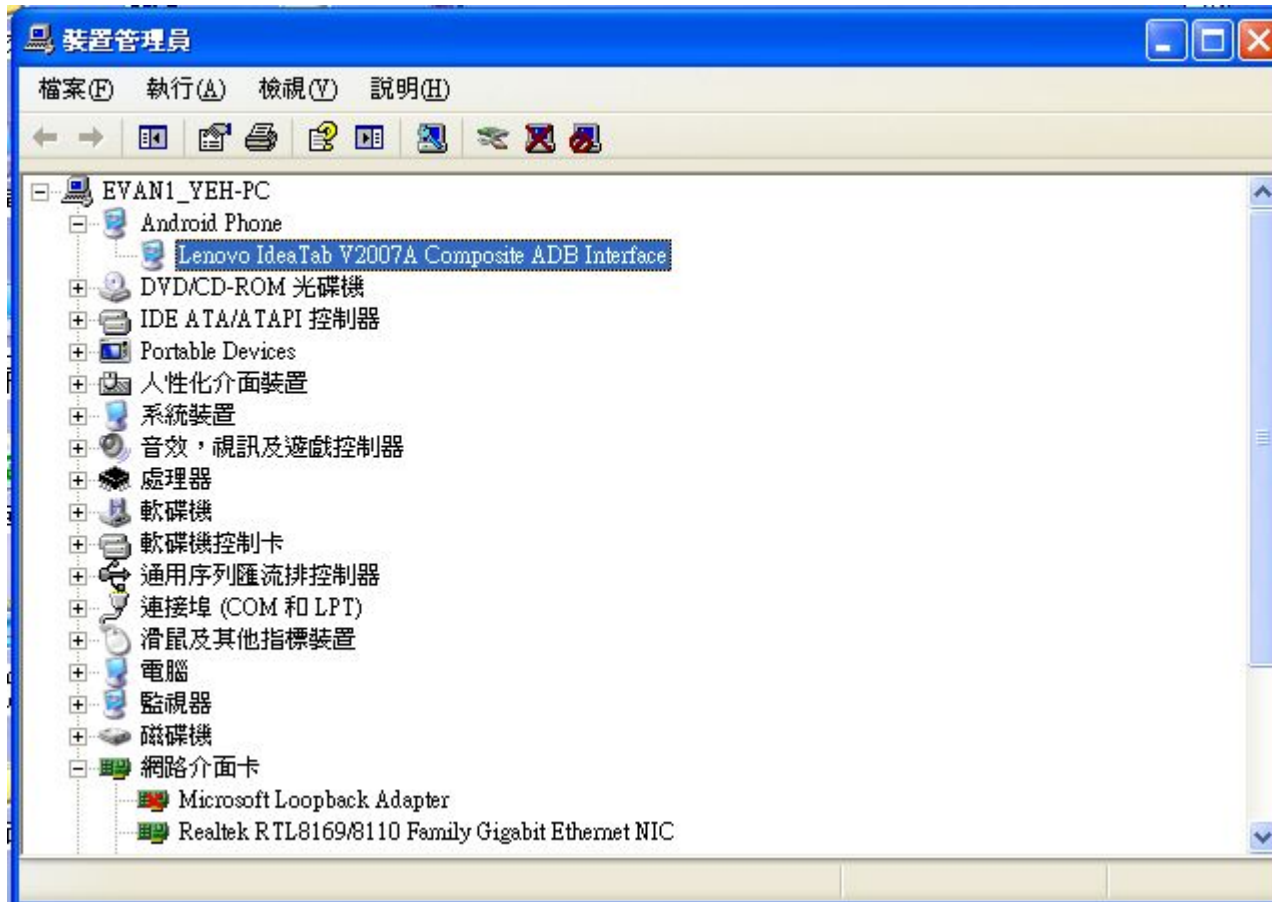
QPST Backup 2.

- Backup finised.



System Data Backup 1.

- Check com port for ADB is available:



System Data Backup 2.

Use adb command to backup System Data, the command line is as bellow:

```
adb pull persist/bt_nv.bin
```

PEGATRON

& Unihan

Image download

Copyright Pegatron Ltd. 2008 All rights reserved.

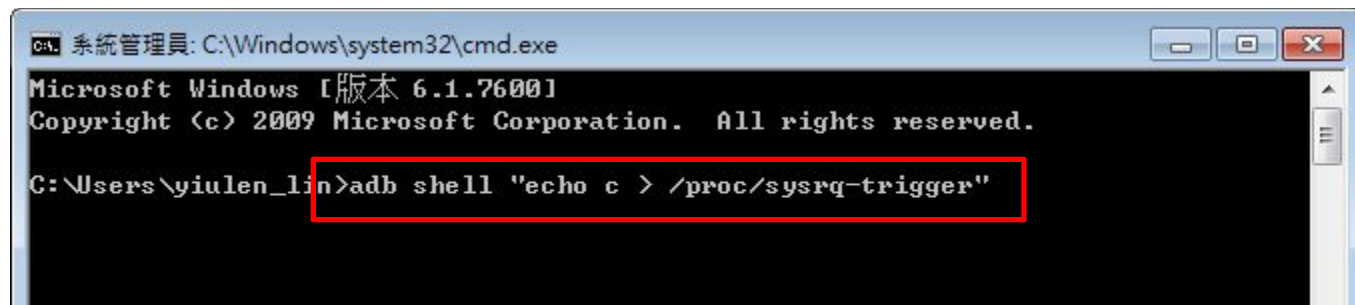
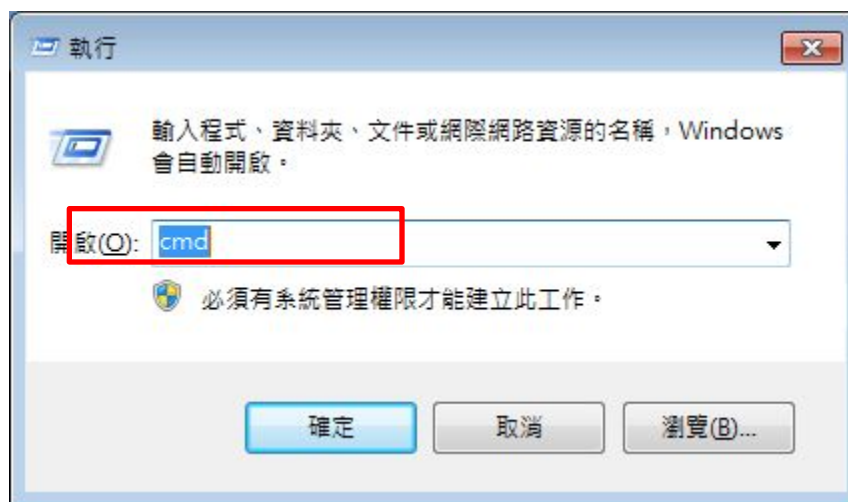
PEGATRON

Step 0

- Install QPST version v2.7 **build 378**
 - <\\ptw-dp-02\BinFiles\Westlake\Tools\QPST2.7.378.zip>
 - Install USB driver for download mode
- Before download image by QPST, please execute backup QCN
- Prepare related images and hexs
 - Modem part
 - Application part
- The modem and application parts are in the same folder:

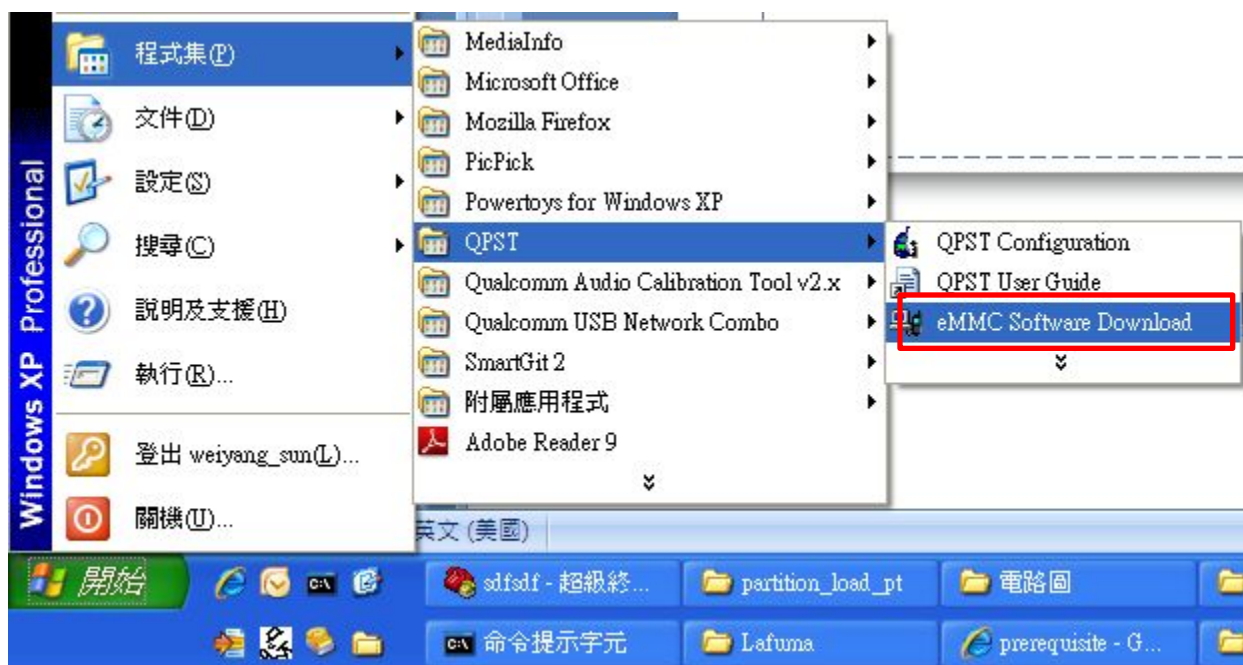
Step1

- Press start -> execute
- Type **cmd**
- Type **adb shell "echo c > /proc/sysrq-trigger"**



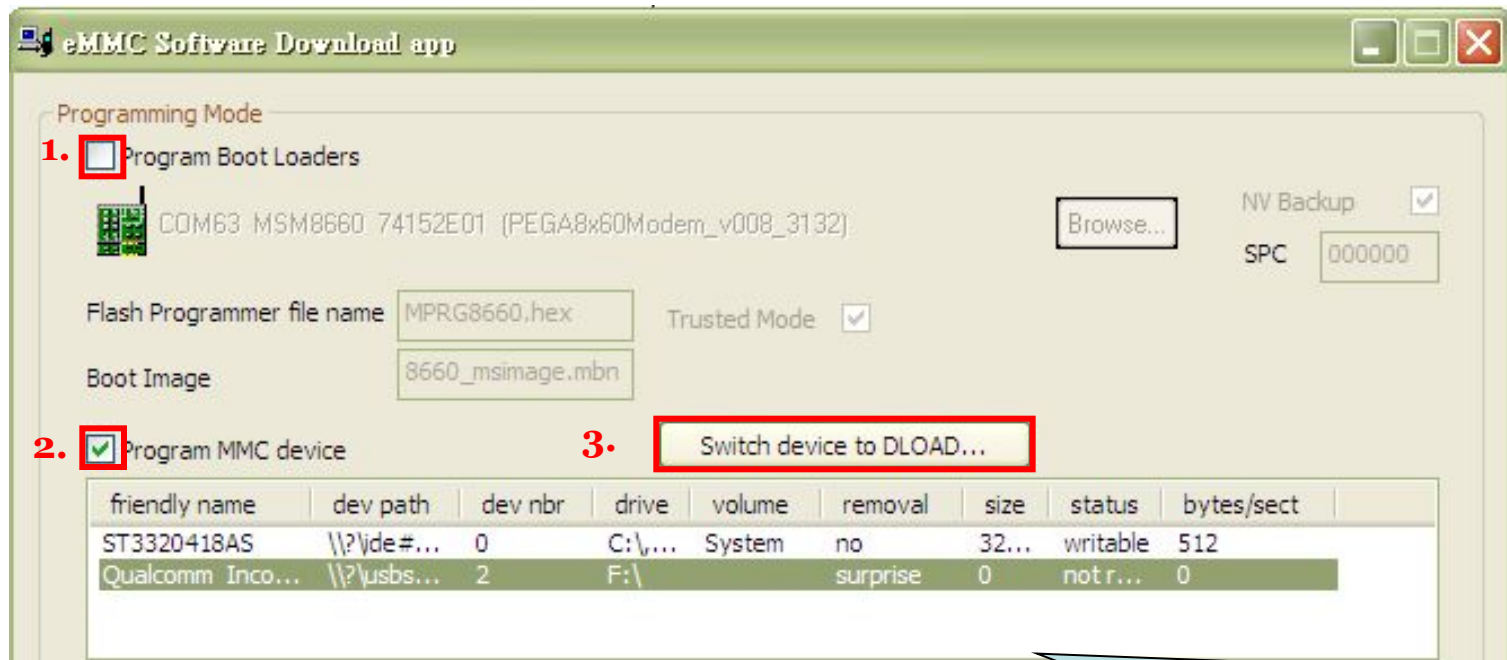
Step 2

- Execute eMMC Software Download



Step 3

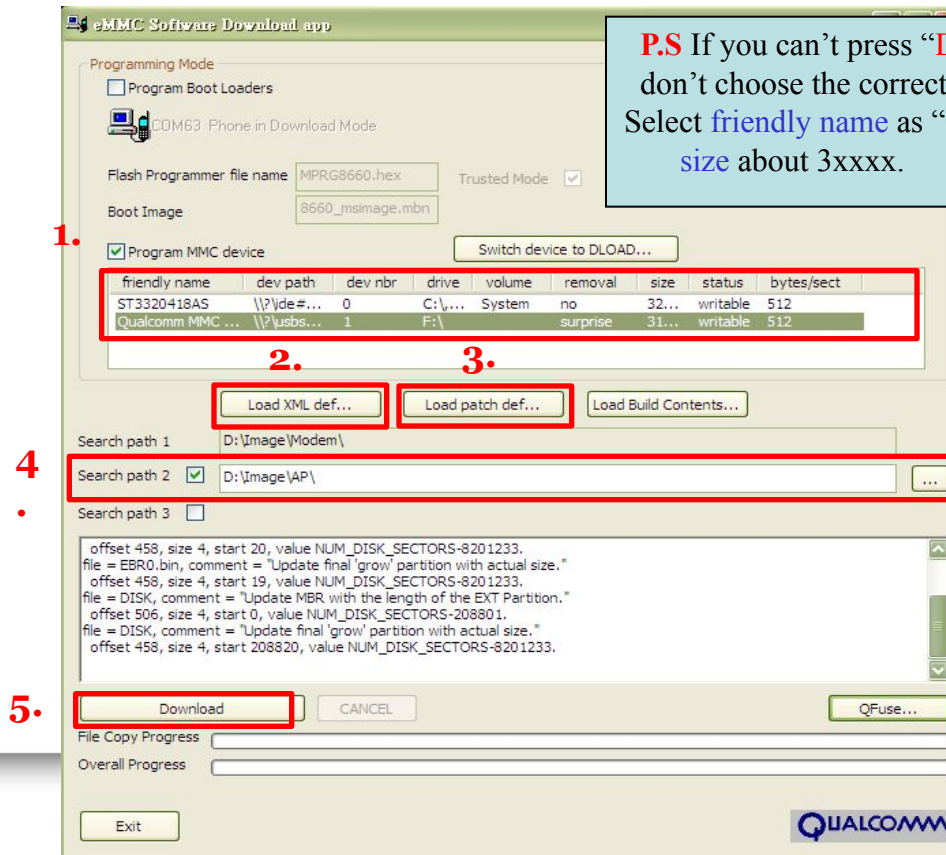
- 1. Do not click “Program Boot Loaders” button.
- 2. Click “Program MMC device” button.
- 3. Make sure modem is in download mode or not, or you can click “Switch device to DLOAD...” button to force modem enter download mode.



P.S Click this **only** when your COM port **is not** at Download mode.

Step 4

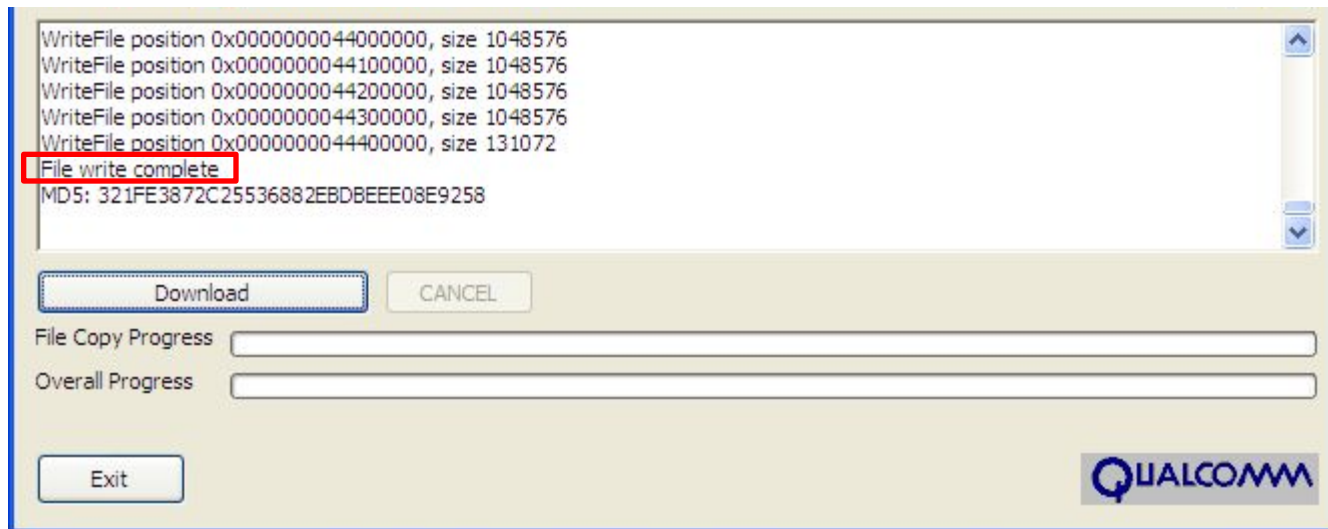
- 1. Select friendly name as “Qualcomm MMC ...”
- 2. Click “Load XML def...” button to select sparse-rawprogram0.xml from modem image
- 3. Click “Load patch def...” button to select patch0.xml from modem image
- 4. Click “Search path 2” and select to AP image folder.
- 5. Finally, Click “Download” button.



P.S If you can't press “Download” button, you must don't choose the correct MMC device. Then check ☐ Select friendly name as “Qualcomm MMC ...” or size about 3xxxx.

Step 5

- After about 1 min, you should see the message “File write complete”.
- Reboot target manually since QPST won't do that.
- After download image by QPST, please execute restore QCN



PEGATRON

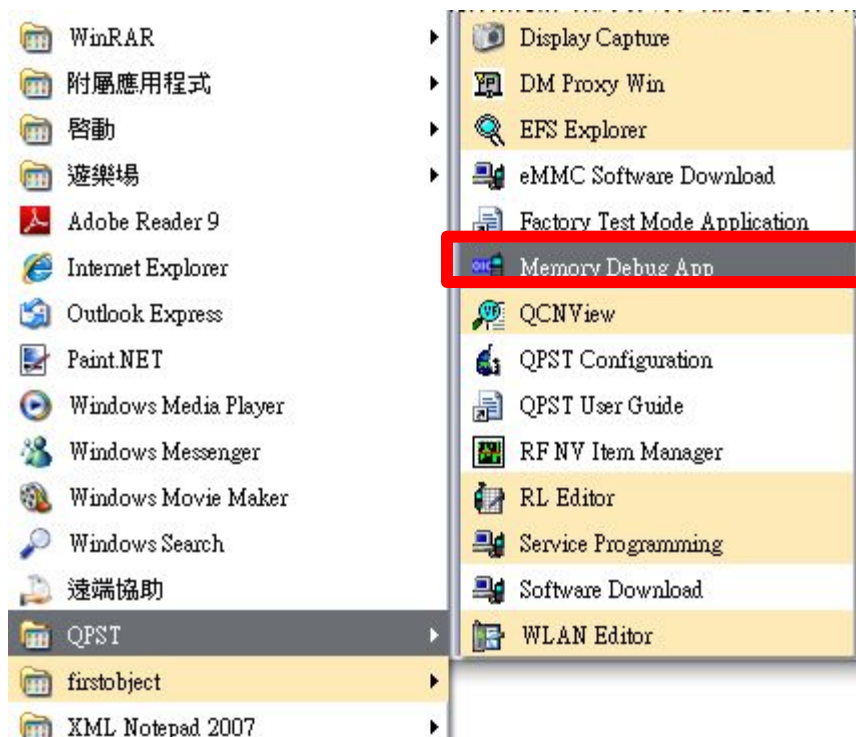
& Unihan

Reboot system

Copyright Pegatron Ltd. 2008 All rights reserved.

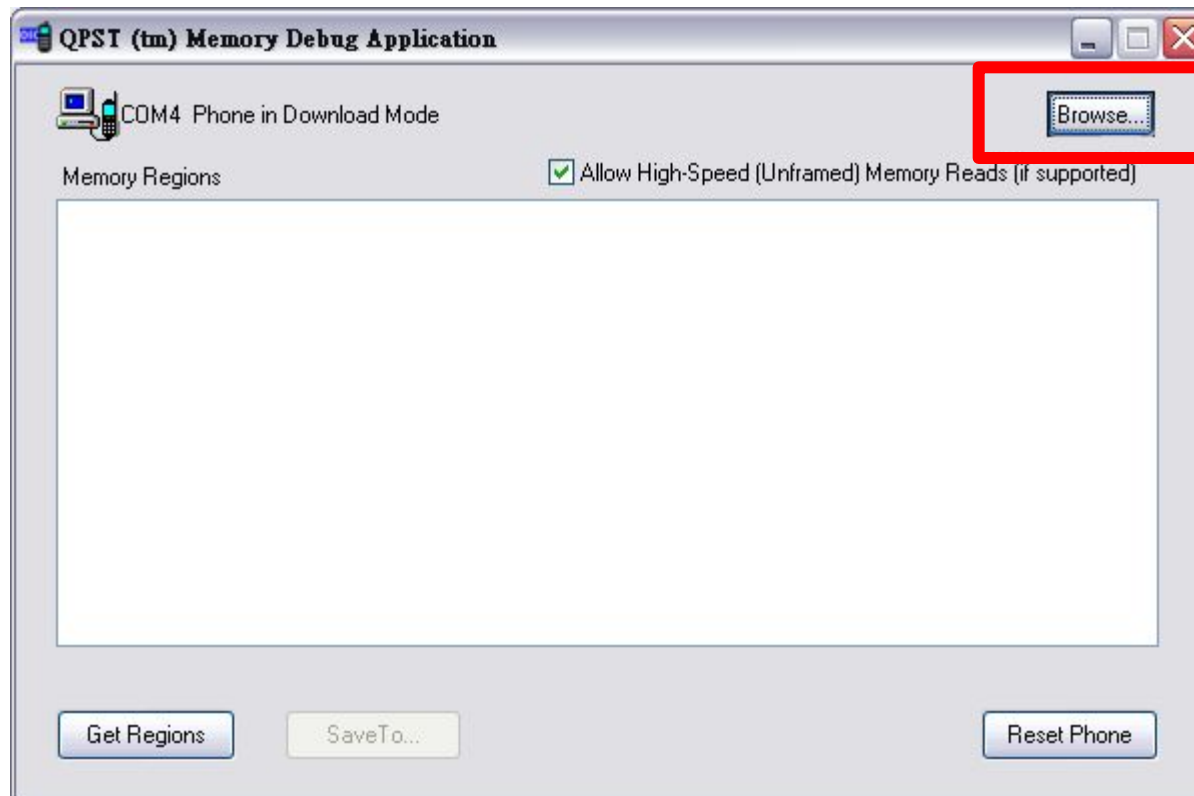
Step 1

- Open **Memory Debug App**



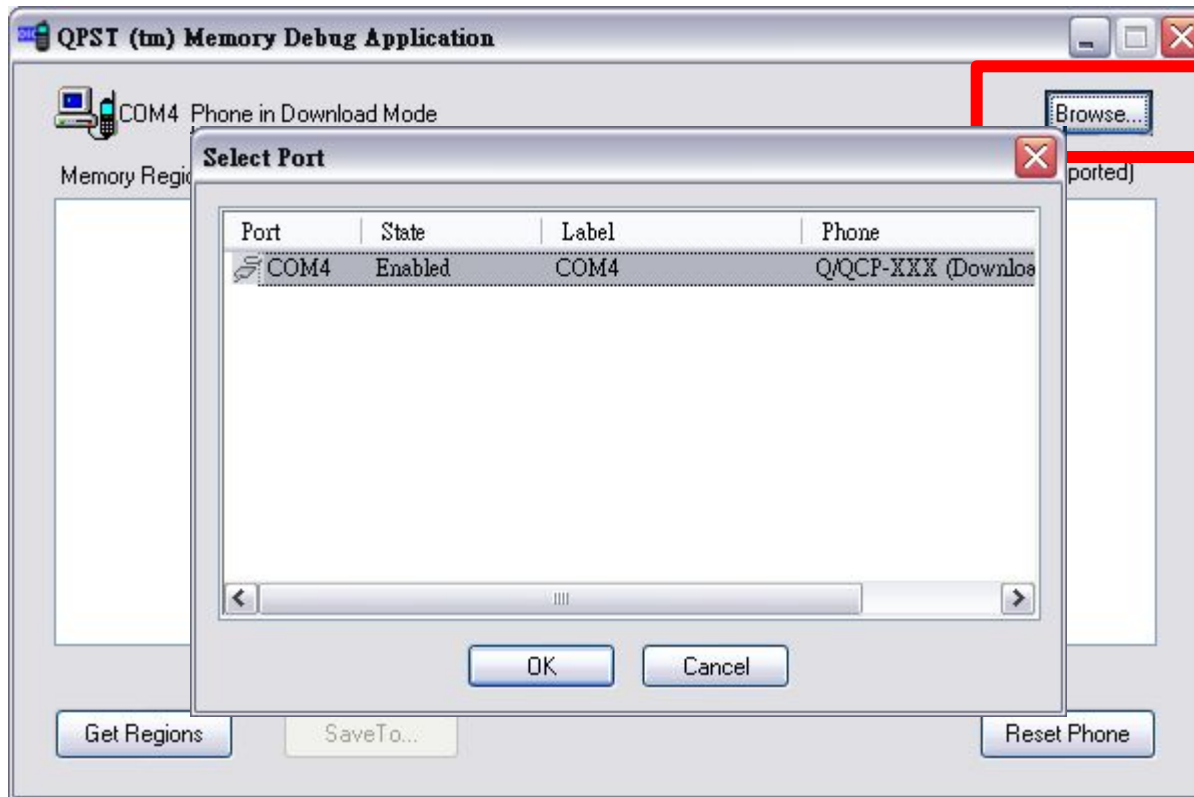
Step 2

- Click **Browse...**



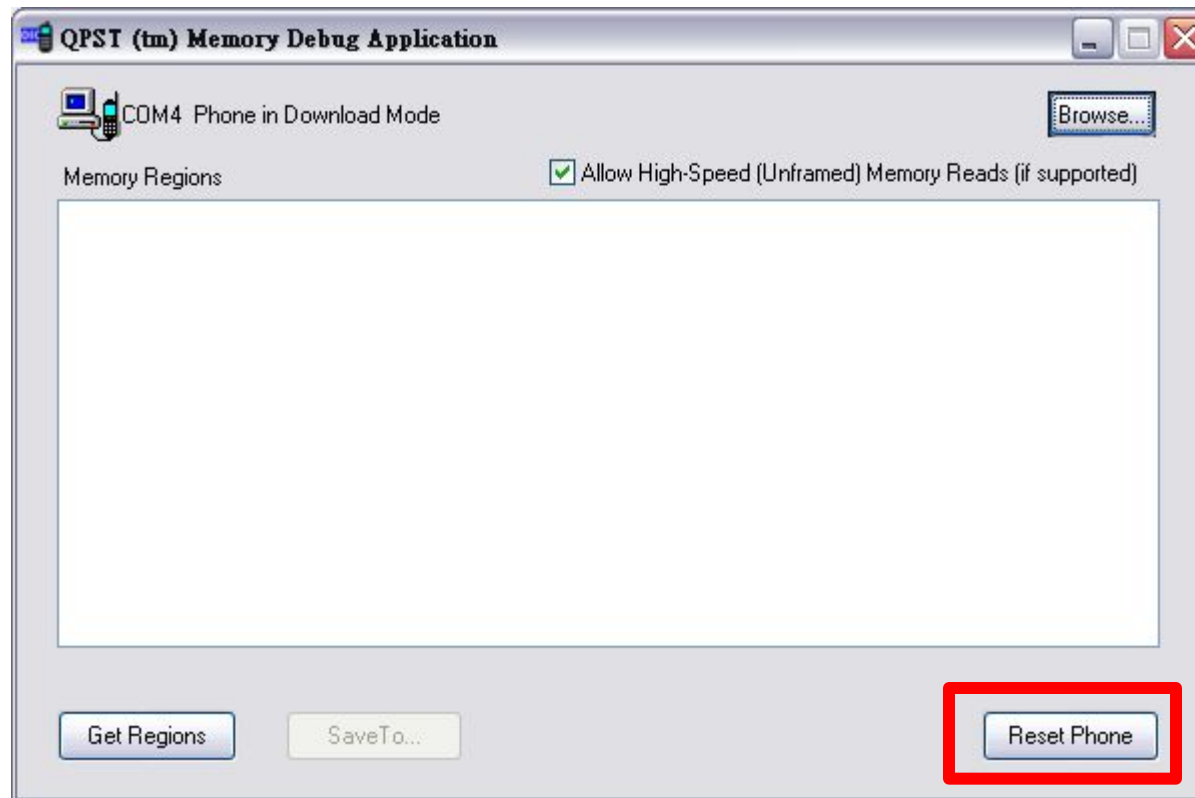
Step 3

- Choose the COM port that named Q/QCP-XXX (Download mode)
- Click OK



Step 4

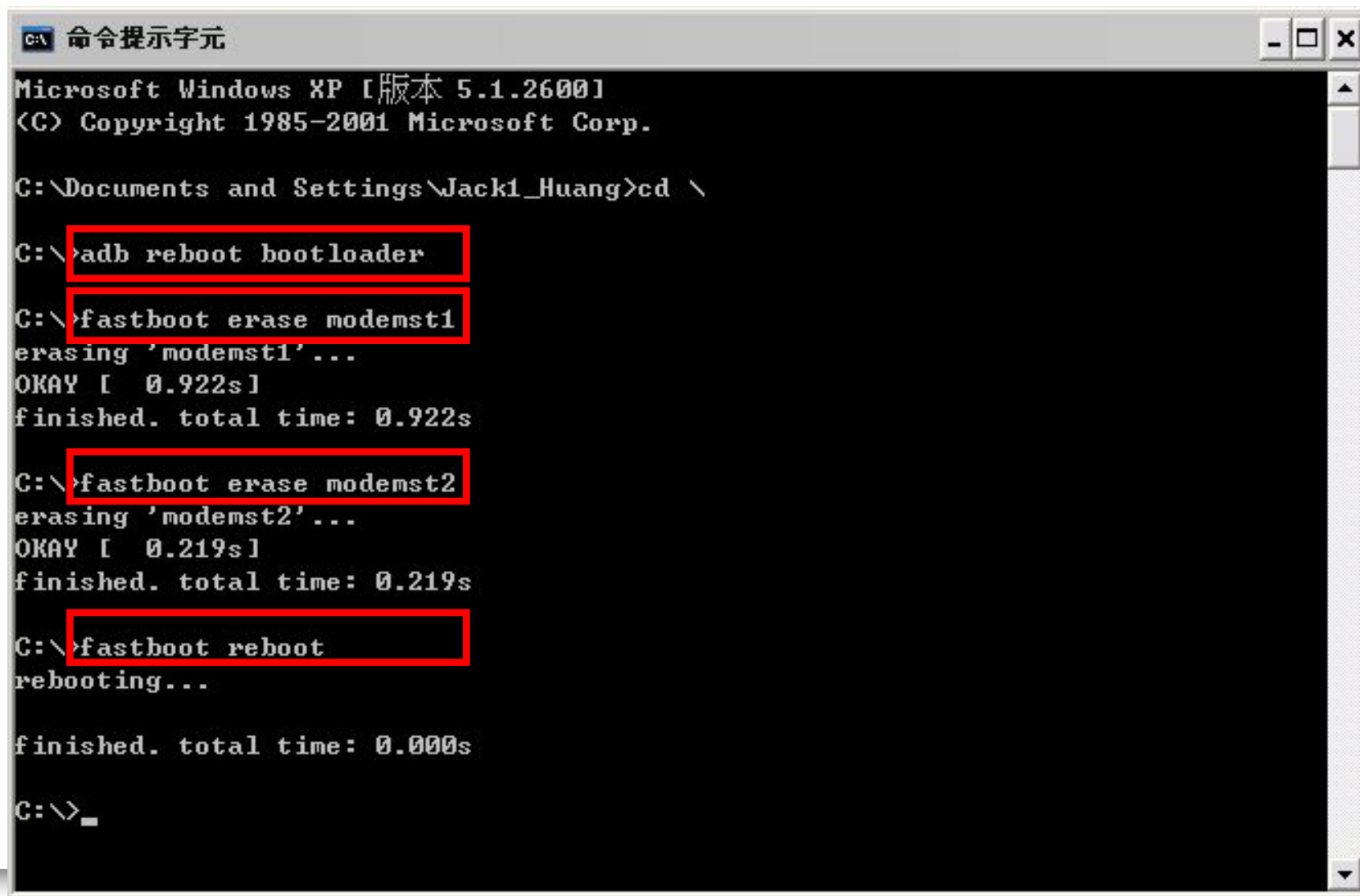
- Click **Reset Phone**



QCN and system data restore

Copyright Pegatron Ltd. 2008 All rights reserved.

QCN Restore 0.



```
命令提示字元
Microsoft Windows XP [版本 5.1.2600]
(C) Copyright 1985-2001 Microsoft Corp.

C:\Documents and Settings\Jack1_Huang>cd \

C:\>adb reboot bootloader

C:\>fastboot erase modemst1
erasing 'modemst1'...
OKAY [ 0.922s]
finished. total time: 0.922s

C:\>fastboot erase modemst2
erasing 'modemst2'...
OKAY [ 0.219s]
finished. total time: 0.219s

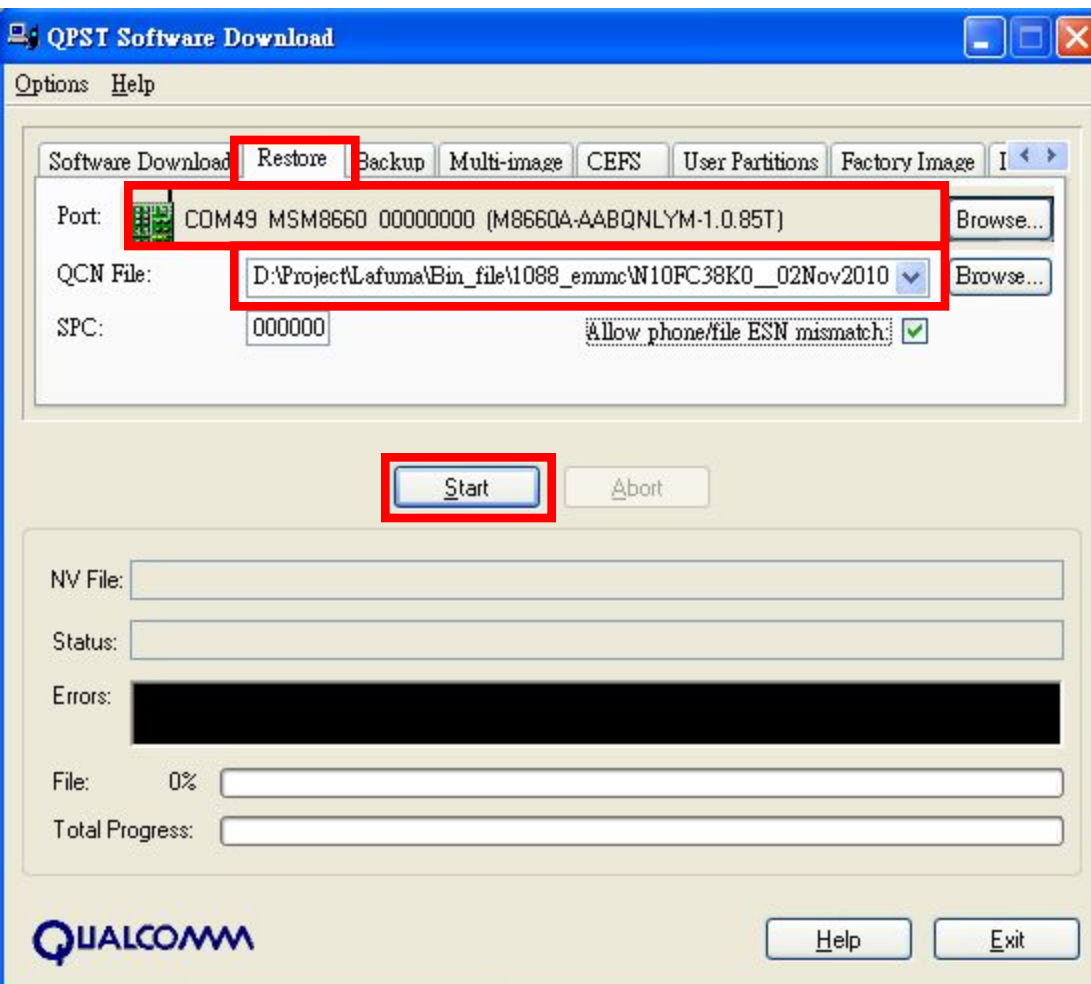
C:\>fastboot reboot
rebooting...

finished. total time: 0.000s

C:\>_
```

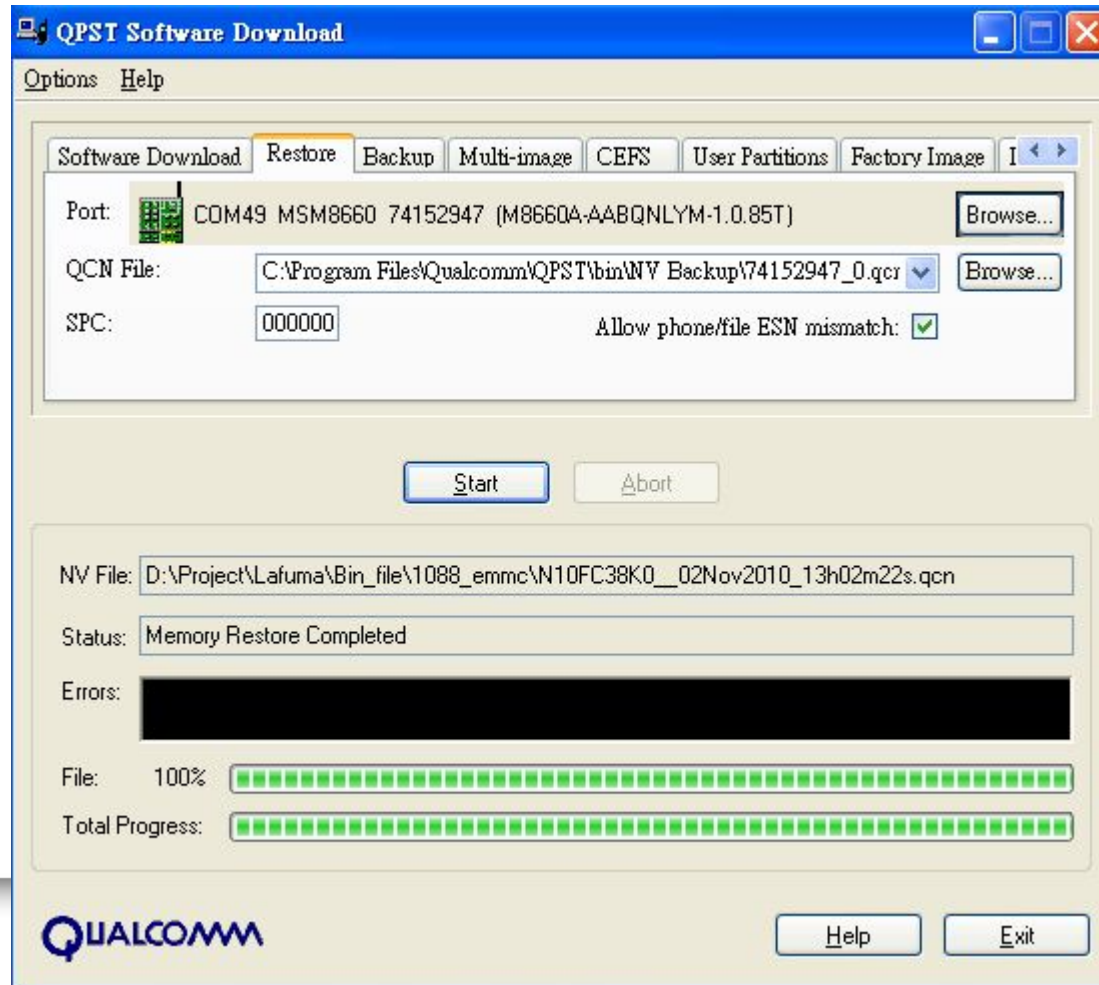
QCN Restore 1.

- Choose restor tab, correspond Port and QCN file
- Press start to restore QCN.



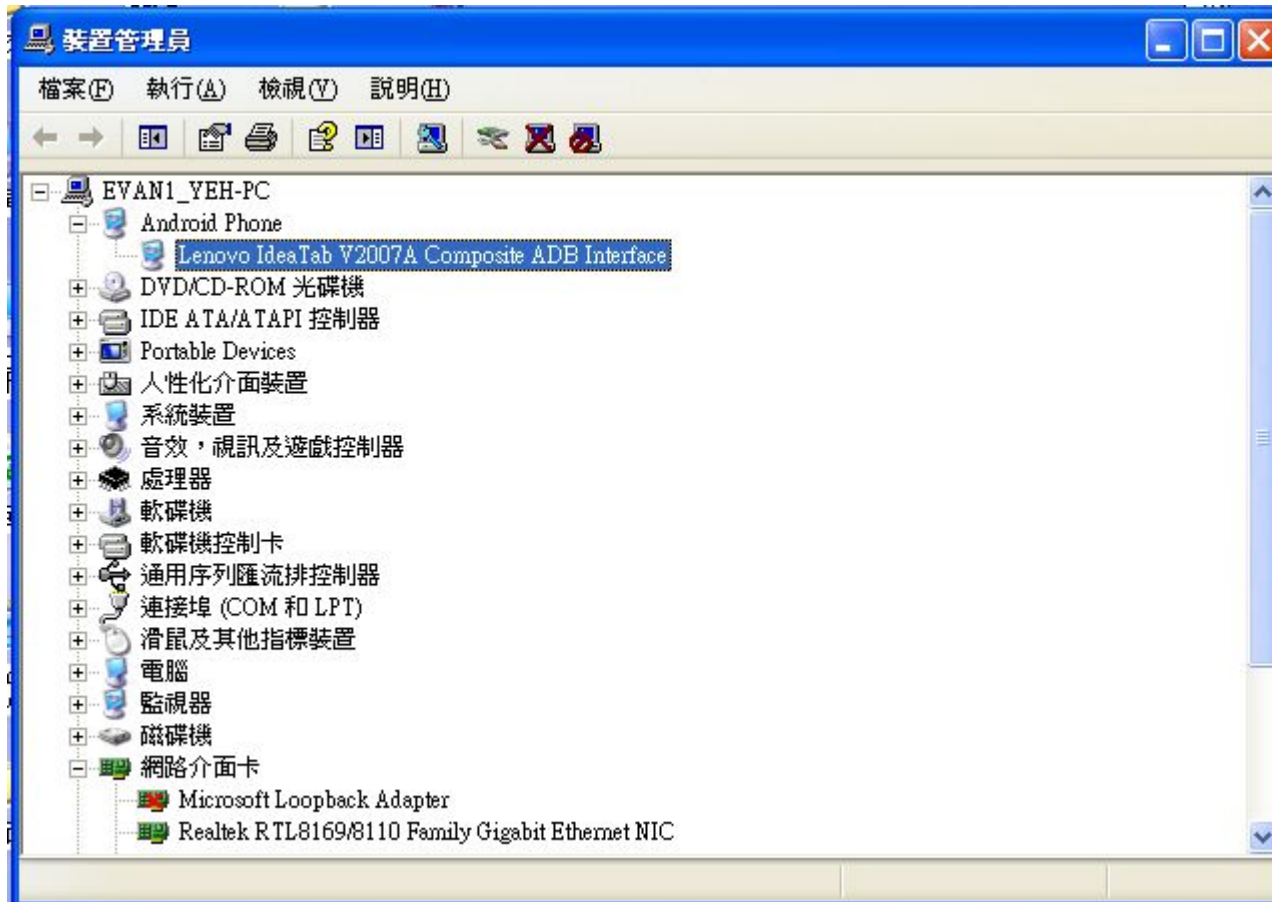
QCN Restore 2.

- After finished download, the device will reboot automatically.
- Plug your SIM card to check call function is workable.



System Data Backup 1.

- Check com port for ADB is available:



System Data Backup 2.

Use adb command to restore System Data, the command line is as bellow:

```
adb push bt_nv.bin persist/
```

System Data Backup 3.

注意:自V007後,都要這個步驟

現在資料夾多了兩個檔案, `push_WCNSS_ini.zip`和`WCNSS_qcom_cfg.ini`

`push_WCNSS_ini.zip`解壓縮後會有一個 `push_WCNSS_ini.bat`,
請大家 download 完 QPST 之後,要再執行 `push_WCNSS_ini.bat`, 將
`WCNSS_qcom_cfg.ini`
送進device, 這樣 Wi-Fi 才可以正常開啟。