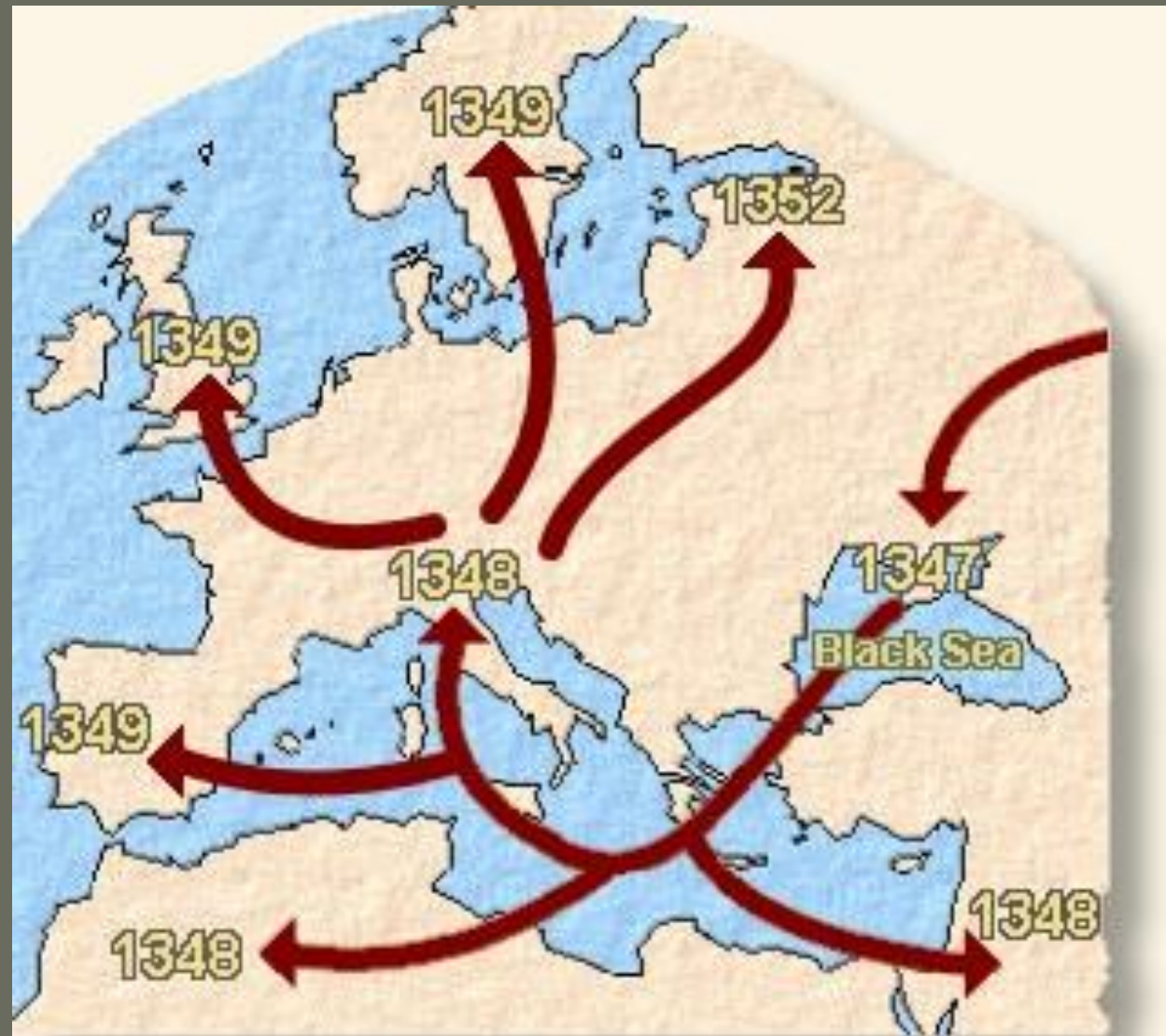


The great Plague

1665-1666

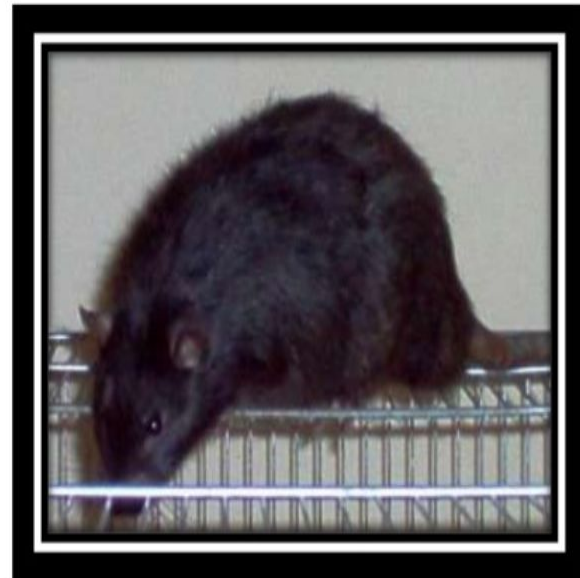
14th Century



The Plague's Progress

The great plague:

- It took place in London in 1665 and 1666.
- The disease came from Holland.
- Spread by fleas that lived in black rats.



The Traveller

Rattus Rattus



The Carrier

The Flea



Black Death



Animal Victims



FIG. 4-2 Animal victims of the plague

A Cure



A doctor
at the Time
of the Plague



The Death Toll

London, 1664-1665

