

English presentation

**Theme : Music in our life**  
**My favorite singer**

By Omelchenko Vlad

**Form : 8-B**

**Teacher : Sheremet T.V.**

**School Year 2015/2016**

# VOCABULARY

**Assiduousness**

**Confirm**

**Career**

**Soul**

**Decision**

**Distinction**

**Prominent**

**Scientists**

# Assiduousness



# Confirm



# Career



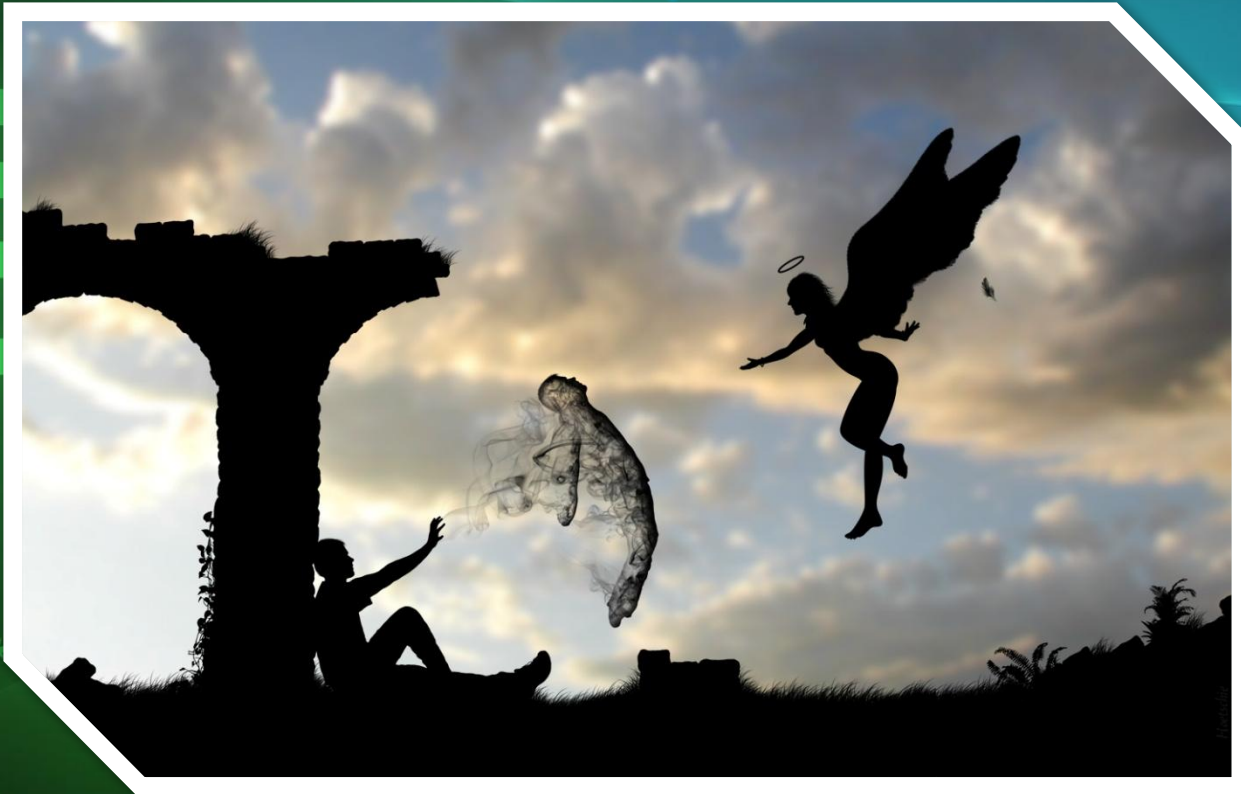
# Distinction



# Scientists



# Soul





# Decision



# Prominent



# TEXT



There are so many kinds of music in our life. For example, rap and pop music, rock and alternative music, industrial and disco music, drum & bass and techno music, and, of course, classic music. Different people like different music. The scientists say that they can define your character if they know what music you like. For example, they suppose that people who listen rock music are very clever and reasonable. British scientists confirm that the most of young people listen to the aggressive music as metal and rock. Scientists say that these people are good students, because of their character and assiduousness. I agree with this statement, because I think that music shows your soul and nature.



# My Favorite Group

As for me, my favorite group is "Linkin Park". They sing in different styles, such as: alternative, new metal, heavy metal and rock. I like this group because of good texts and unusual musical decisions. This group was formed in 1996. They released 9 albums. I like all their songs without distinction. My favorite song is "In The End". There are six men in this group: Chester Bennington, Mike Shinoda, Rob Burdon, David Farrell, Bred Delson and Joe Hahn. The most prominent person of the group is Chester Bennington. He is very talented. Also I like him because he overcame his drug addiction and made his musical career. Nowadays he is taken the 27th place in the hit parade list of "100 of all times top heavy metal vocalists". He writes poems and composes music.



A serene sunset scene over a vast ocean. The sun is a bright, glowing orb positioned just above the horizon line, casting a shimmering path of light across the water's surface. The sky is a gradient of warm colors, from deep orange near the horizon to a lighter, hazy yellow at the top. The text "The End" is written in a white, elegant cursive script, centered in the lower half of the image. The overall mood is peaceful and conclusive.

*The End*