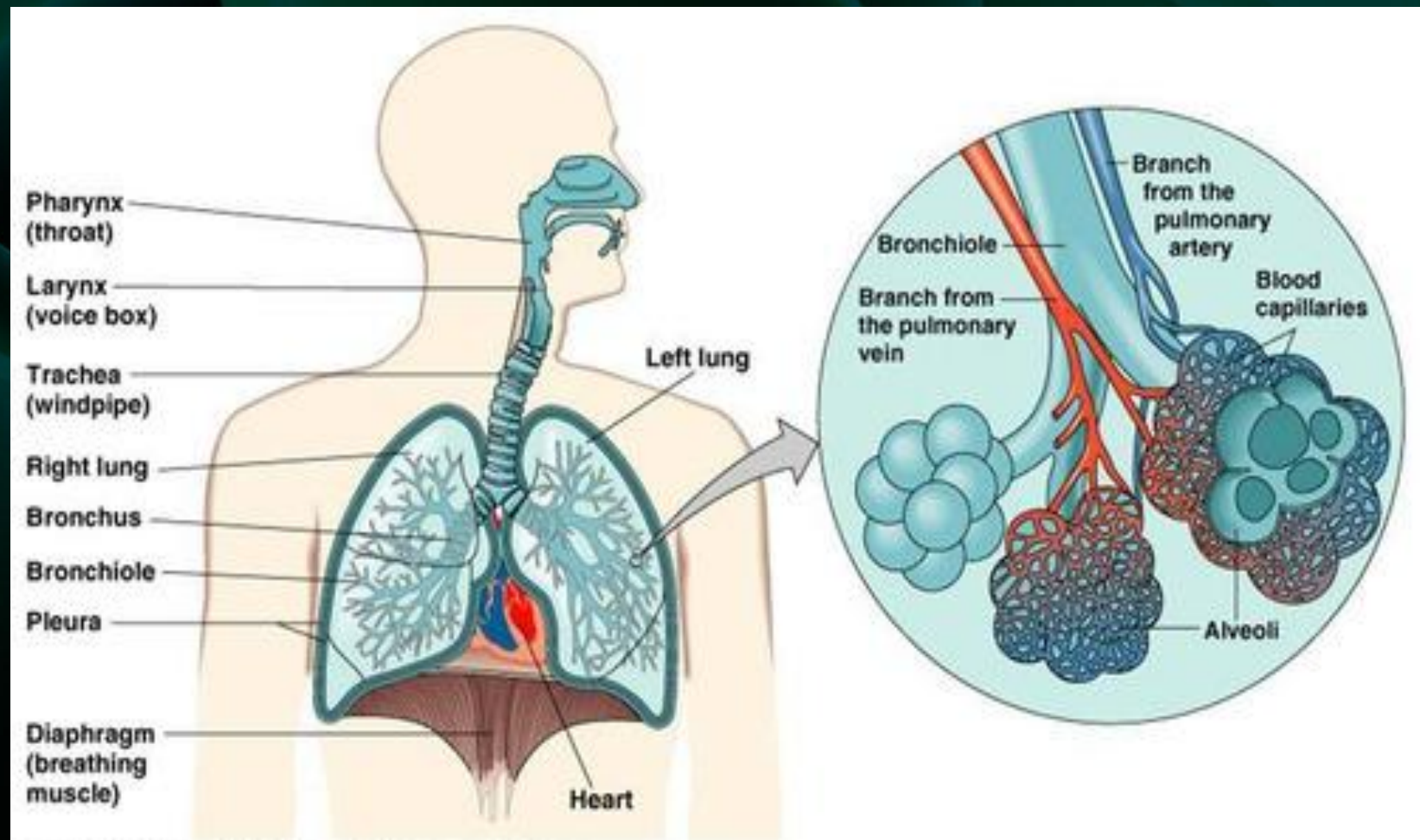





The background features a complex, abstract design with glowing cyan and green geometric shapes, including triangles and lines, set against a dark background. Binary code (0s and 1s) is visible in the corners, suggesting a digital or technological theme.

Respiratory System



Respiratory System



Components of the Respiratory System

- **Nose**  The most external organ, air is inhaled and exhaled through nose.
- **Larynx**  Also known as sound box, formed of cartilages, connects the trachea to the laryngopharynx
- **Trachea**  Tubular structure, composed of 15-20 C shaped cartilages

Components of the Respiratory System

- **Bronchi**  Left and right divisions of trachea, enters the lungs and divide into secondary bronchi
- **Lungs**  Main organs of respiration, two in number (one on each side of heart), conical in shape, divided into lobes

Parts of the Respiratory System



Conductive Parts



Respiratory Parts

Conductive Parts



**Nose, larynx, trachea,
bronchi**



exchange of gases does not take place

Respiratory Parts



Lungs



exchange of gases takes place

Functions of the Respiratory System

**Gaseous Exchange,
Excretion of carbon dioxide,
Oxygenation of blood**

