



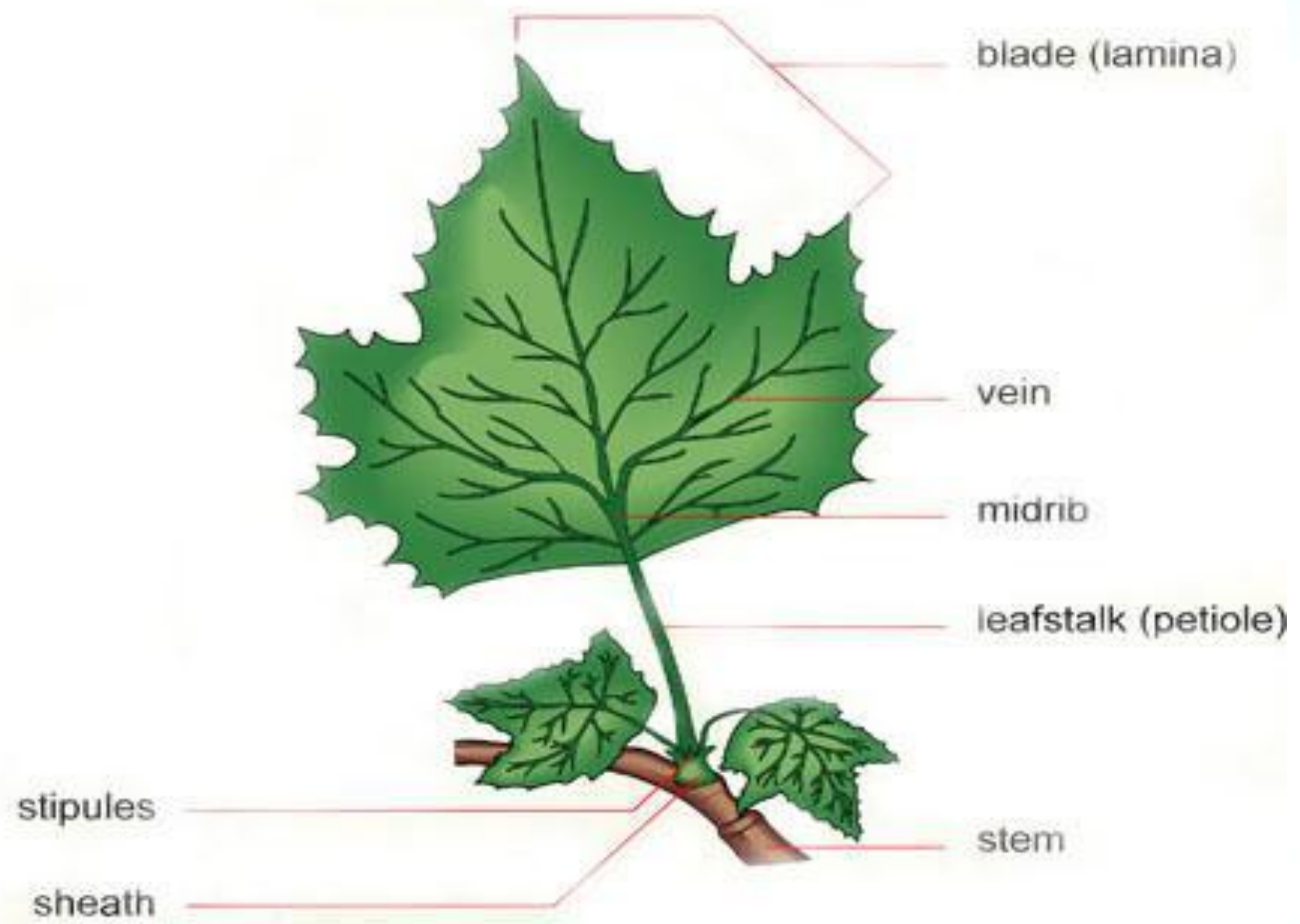
A LEAF

A LEAF

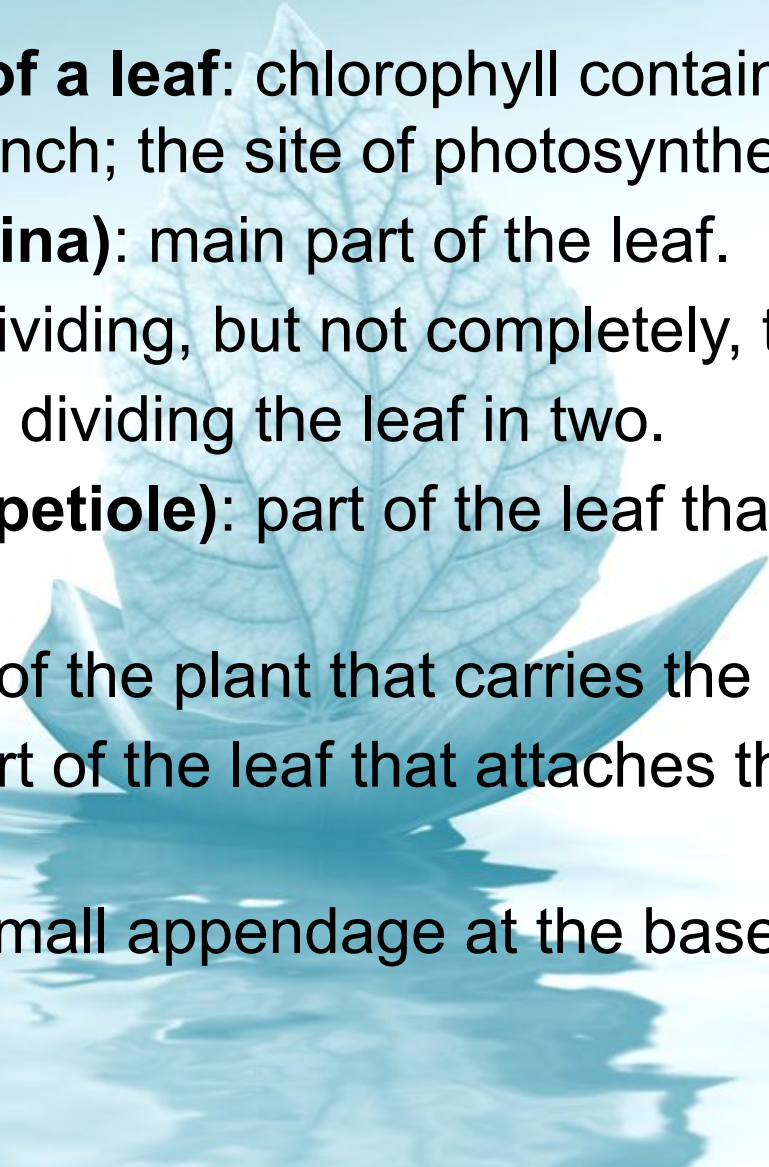
- The leaf is one of the important part of the plants because it is the one which is in charge of accomplishing the photosynthesis, the respiration and transpiration.
- A leaf growing laterally from a stem or branch, or growing from its root.
- It is usually green and consists of a blade, footstalk and stipules.



STRUCTURE OF A LEAF



STRUCTURE OF LEAF

- **Structure of a leaf:** chlorophyll containing outgrowth of a stem or branch; the site of photosynthesis.
 - **Blade (lamina):** main part of the leaf.
 - **Vein:** line dividing, but not completely, the leaf into sections.
 - **Midrib:** line dividing the leaf in two.
 - **Leafstalk (petiole):** part of the leaf that is attached to the stem.
 - **Stem:** part of the plant that carries the leaves.
 - **Sheath:** part of the leaf that attaches the petiole to the stem.
 - **Stipules:** small appendage at the base of the petiole.
- 

LEAF MARGINS



undulate



sinuate



serrate



dentate



lobate



scalloped



palmate



digitate



bipinnatisect



tripinnatisect



pinnatisect



palmatisect



pedate



palmatilobate



bipartite



tripartite



palmatipartite



pinnatipartite



pinnatifid

LEAF MARGINS

- **Leaf margins:** main part of the leaf, usually large and flat.
- **Undulate:** having a wavy margin.
- **Sinuate:** with a sinuous margin.
- **Serrate:** having a sharp edge.
- **Dentate:** having a toothed margin.
- **Lobate:** lobed.
- **Scalloped:** with a scalloped margin.
- **Palmate:** like the fingers of a hand spread open.
- **Digitate:** finger like.
- **Bipinnatisect:** with 2 levels of petioles which segments are sessile.
- **Tripinnatisect:** with 3 levels of petioles which segments are sessile.
- **Pinnatisect:** with similar parts on each side of the central axis and sessile.
- **Palmatisect:** with palmate veins and lobes split to the base of the blade.
- **Pedate:** palmately divided which lateral segments also divided.
- **Palmatilobate:** palmate leaf with rounded lobes.
- **Bipartite:** divided into two parts.
- **Tripartite:** divided into three parts.
- **Palmatipartite:** divided almost to the leaf margin.
- **Pinnatifid:** with pinnated divisions.

LEAF SHAPES



falcate



orbicular



cochleate



subulate



cuneate



linear



sagittate



hastate



panduriform



lacerate and auriculate



lobate



flabellate



asymmetrical



acuminate



mucronate



emarginate



ovoid



obovate



cordiform



oblong



spatulate



oval

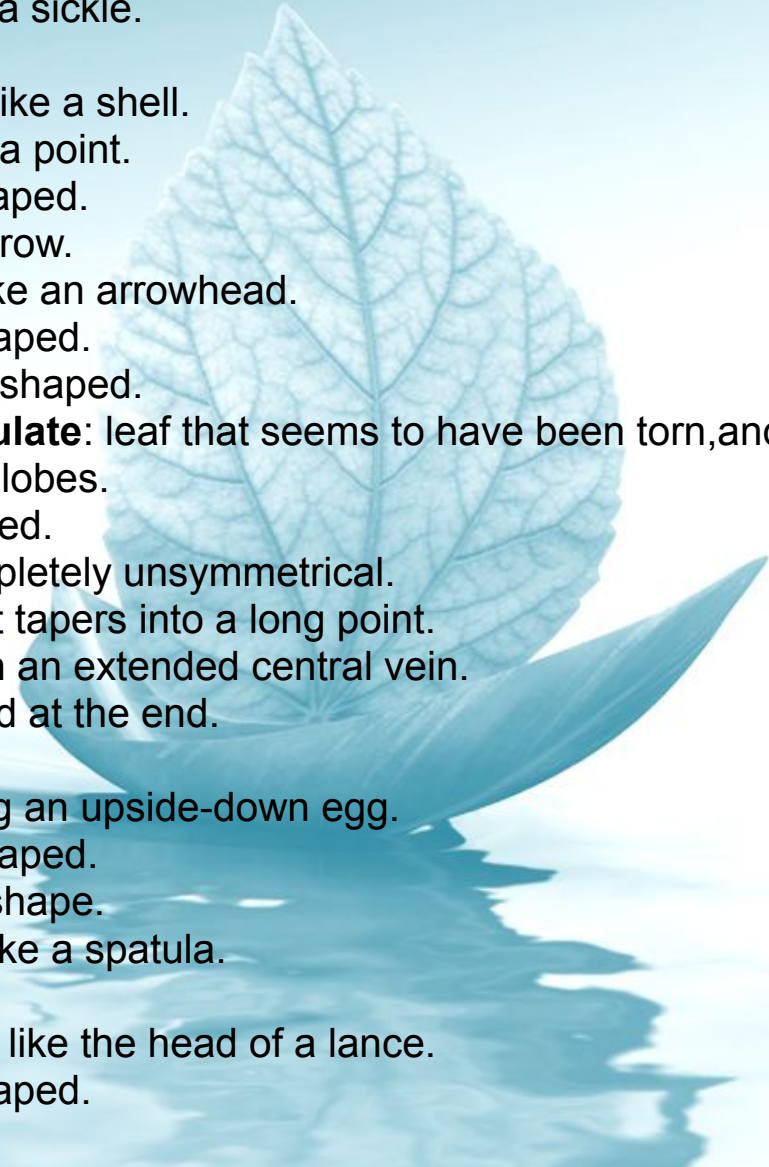


lanceolate



acicular

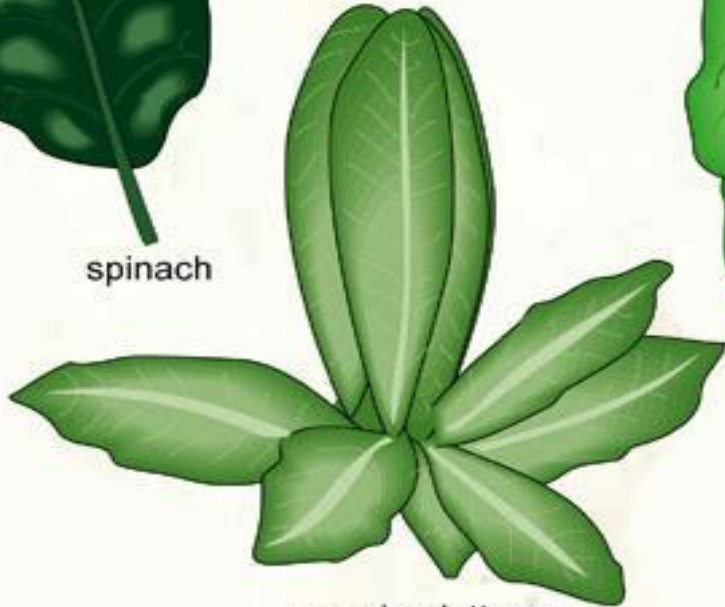
LEAF SHAPES

- **Leaf shapes:** main part of the leaf, usually large and flat.
 - **Falcate:** curved like a sickle.
 - **Orbicular:** circular.
 - **Cochleate:** shaped like a shell.
 - **Subulate:** ending in a point.
 - **Cuneate:** wedge-shaped.
 - **Linear:** long and narrow.
 - **Sagittate:** shaped like an arrowhead.
 - **Hastate:** halberd-shaped.
 - **Panduriform:** violin-shaped.
 - **Lacerate and auriculate:** leaf that seems to have been torn, and which is equipped with auricles
 - **Lobate:** divided into lobes.
 - **Flabellate:** fan-shaped.
 - **Asymmetrical:** completely unsymmetrical.
 - **Acuminate:** leaf that tapers into a long point.
 - **Mucronate:** leaf with an extended central vein.
 - **Emarginate:** notched at the end.
 - **Ovoid:** egg-shaped.
 - **Obovate:** resembling an upside-down egg.
 - **Cordiform:** heart-shaped.
 - **Oblong:** elongated shape.
 - **Spatulate:** shaped like a spatula.
 - **Oval:** elliptical.
 - **Lanceolate:** shaped like the head of a lance.
 - **Acicular:** needle-shaped.
- 

VEGETABLES - LEAF



spinach



romaine lettuce



iceberg lettuce



cabbage

- Vegetables - leaf: vegetable whose edible part is composed of leaves.
- Spinach: plant with dark green leaves.
- Romaine lettuce: type of lettuce with elongated leaves.
- Iceberg lettuce: type of lettuce with somewhat rounded leaves.
- Cabbage: hardy plant native to Europe.



**Thank you
for your attention!**