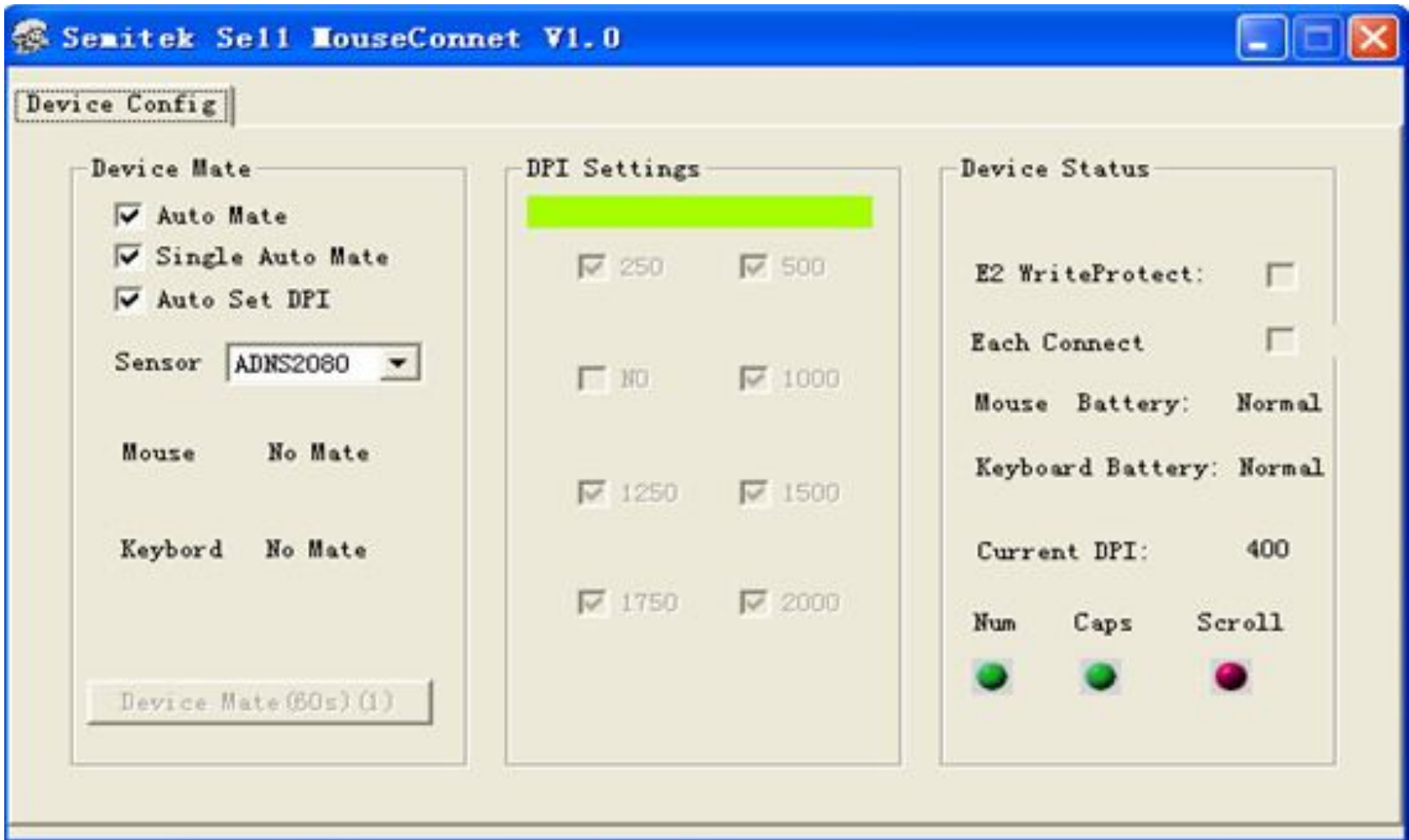


# MouseSpirit instructions

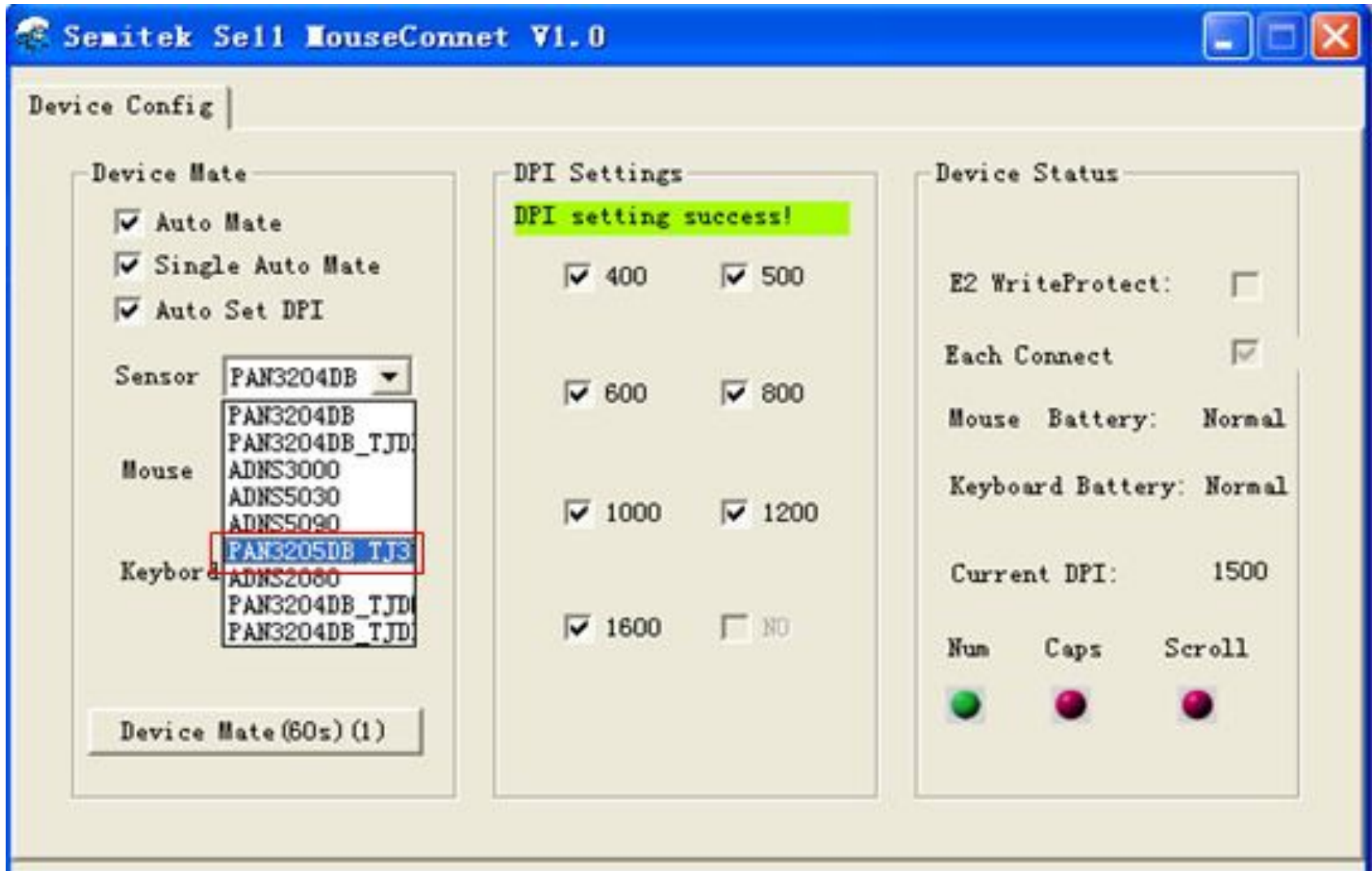
— Open the software



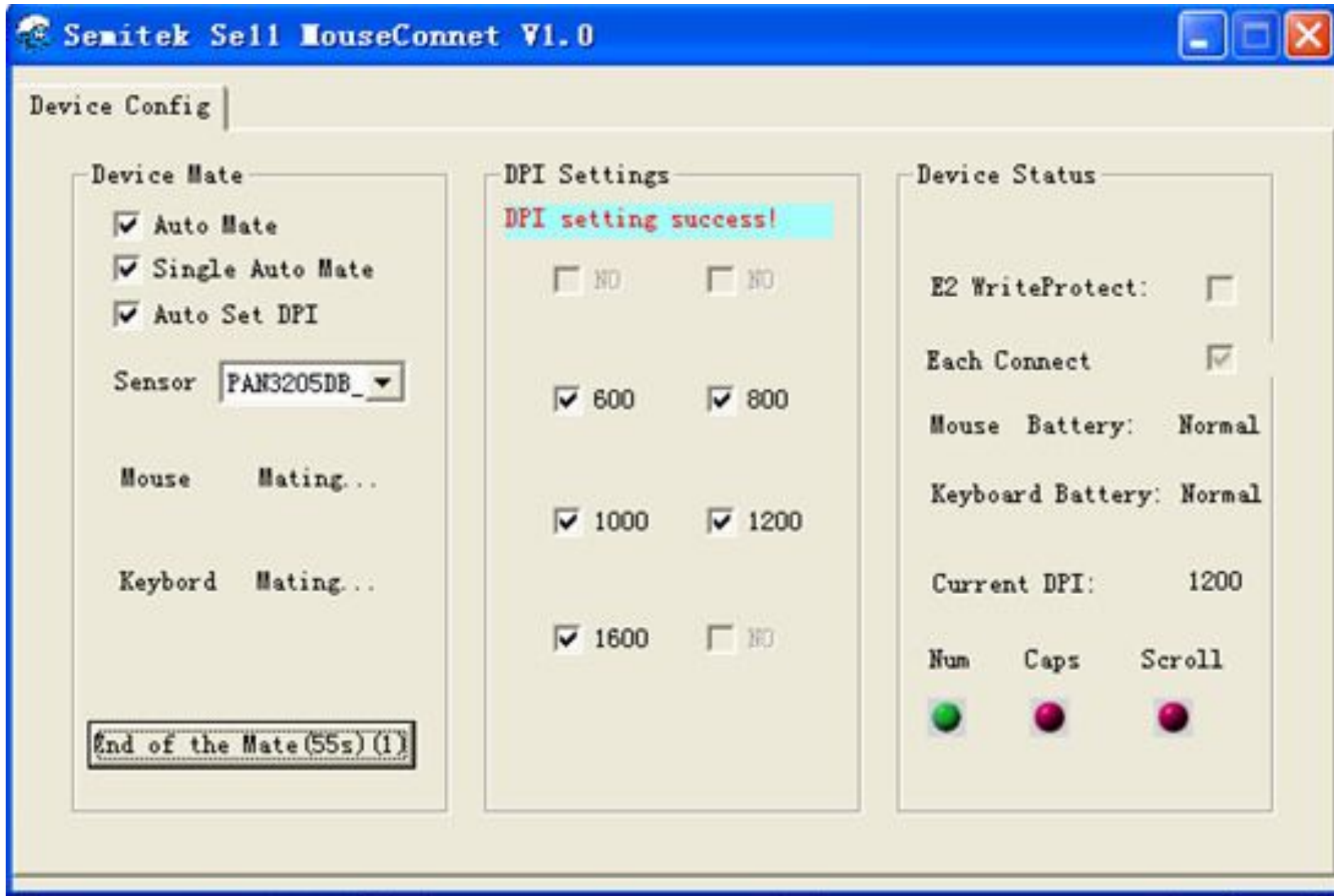
MouseSpirit (EN). exe  
MouseSpirit Micr...



## 二、Chose PAN3205DB from Sensor.

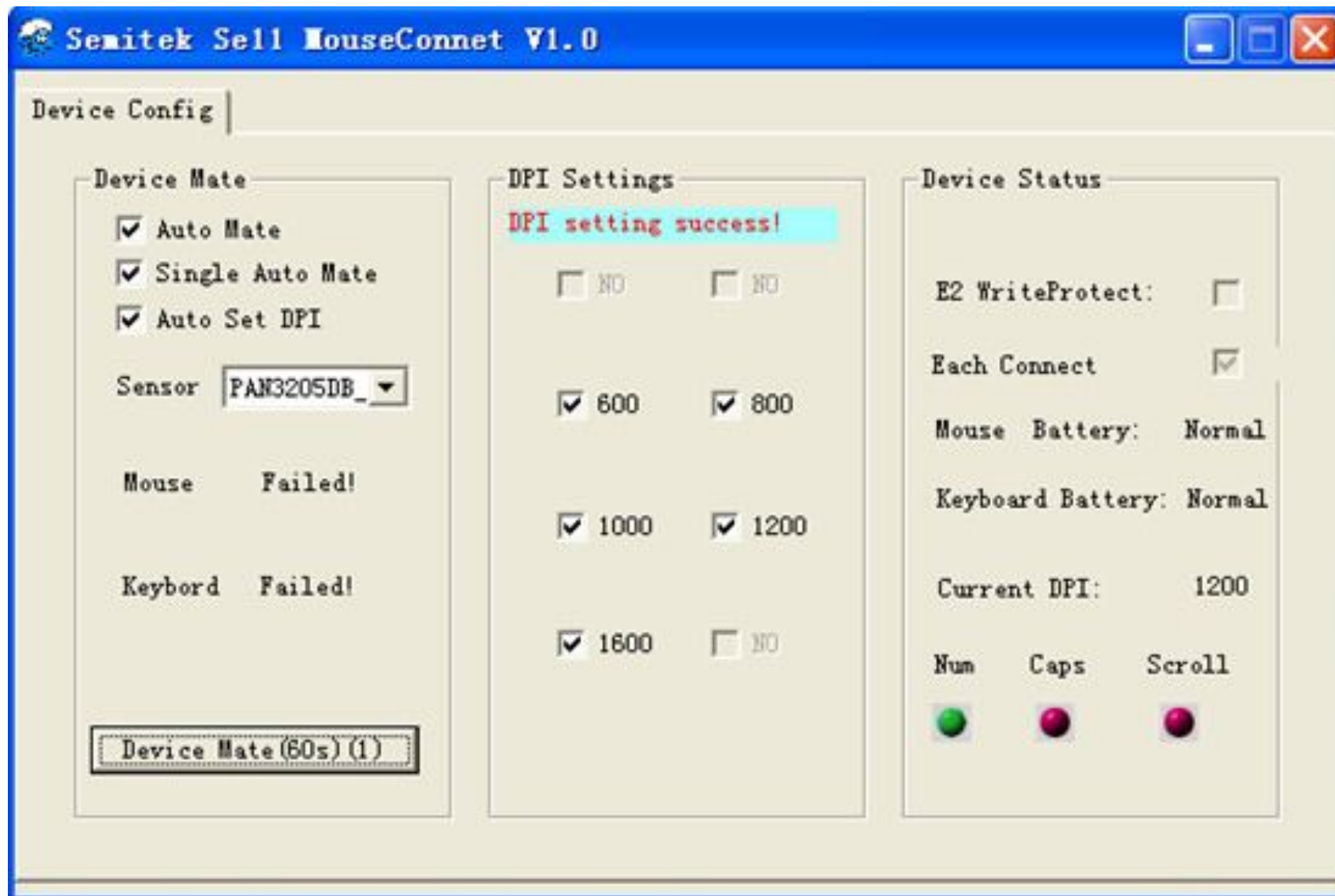


### ≡、Plug Dongle to USB port。

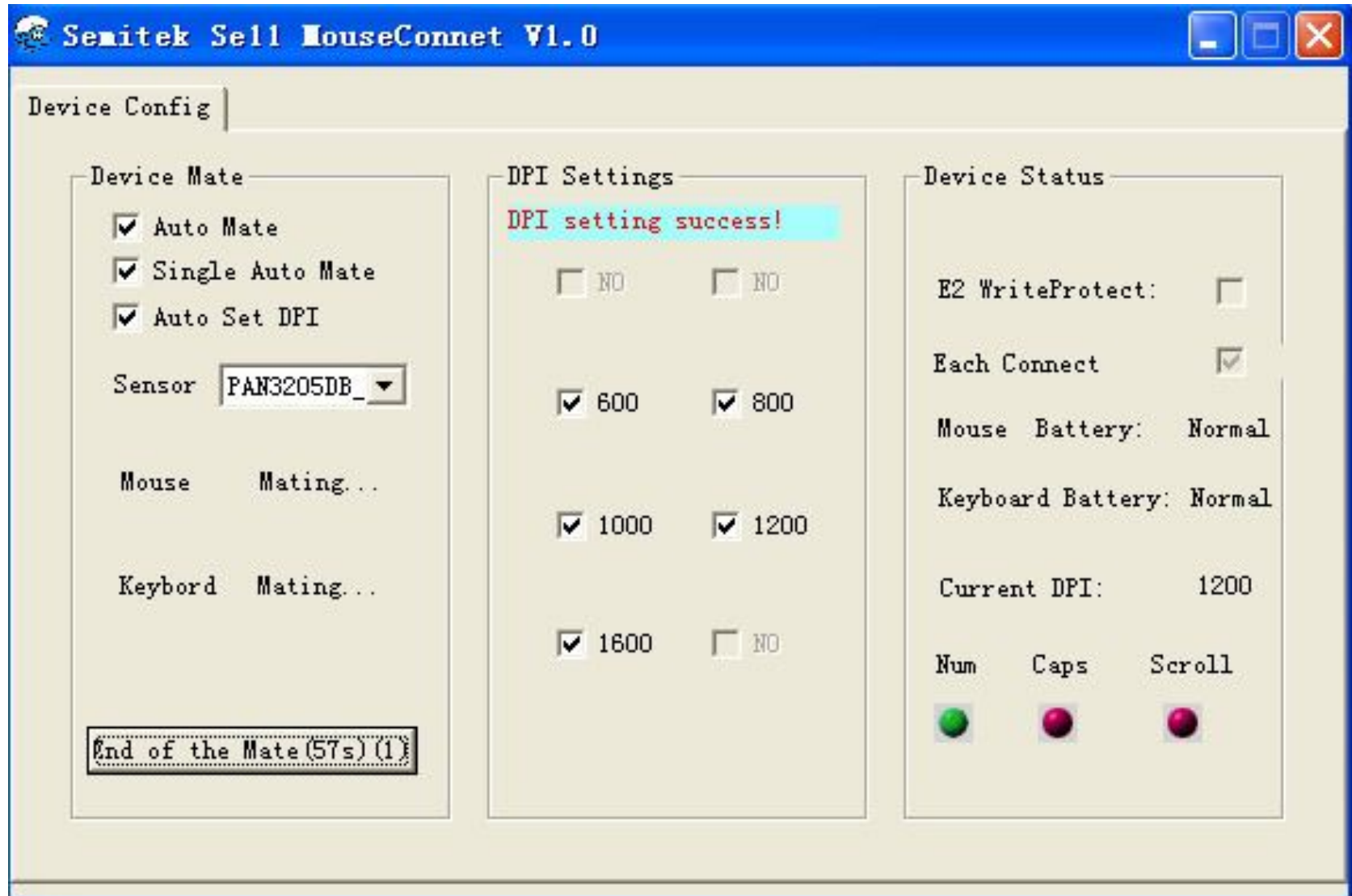


## 四、Click

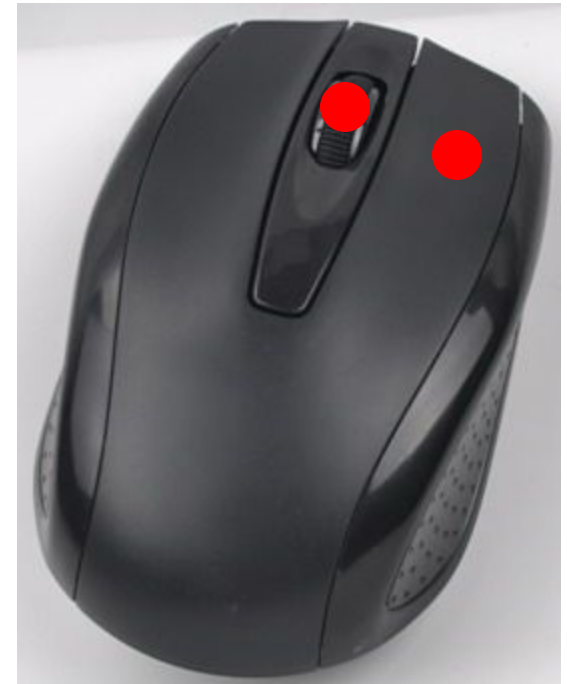
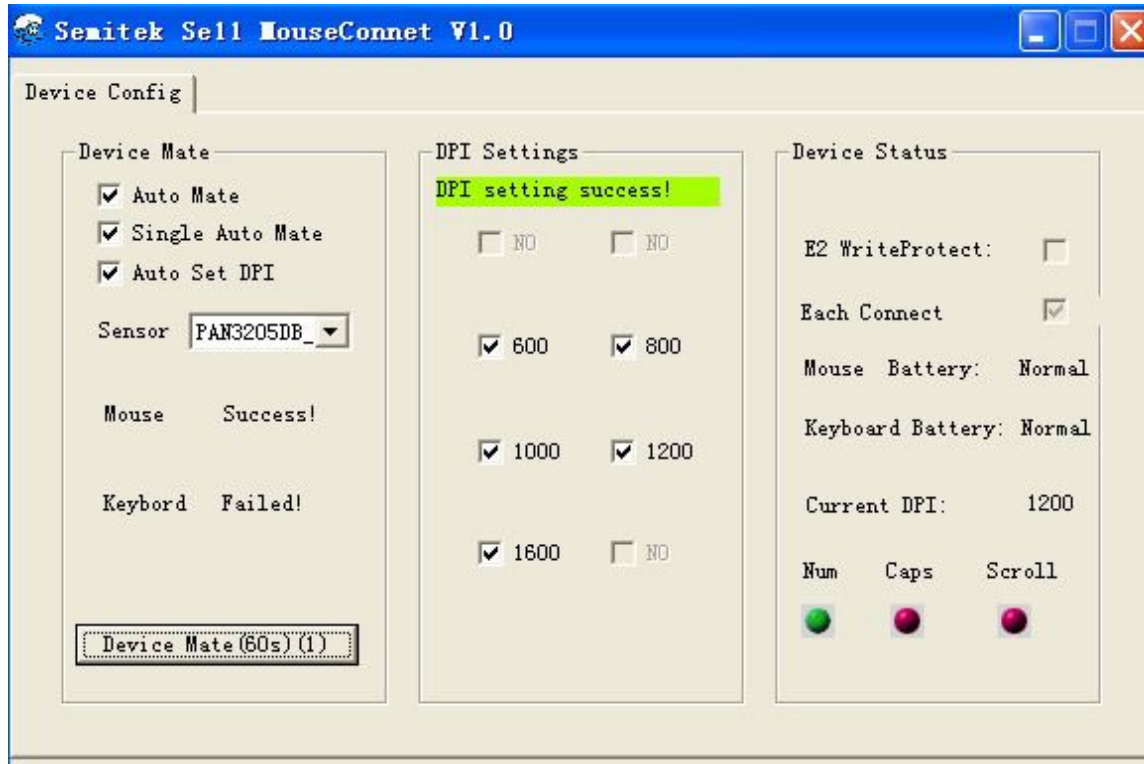
Device Mate (60s) (1)



## 五、Access to working state

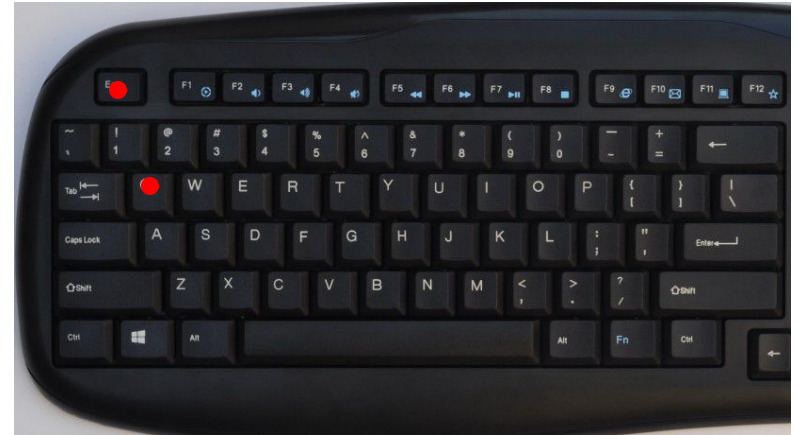
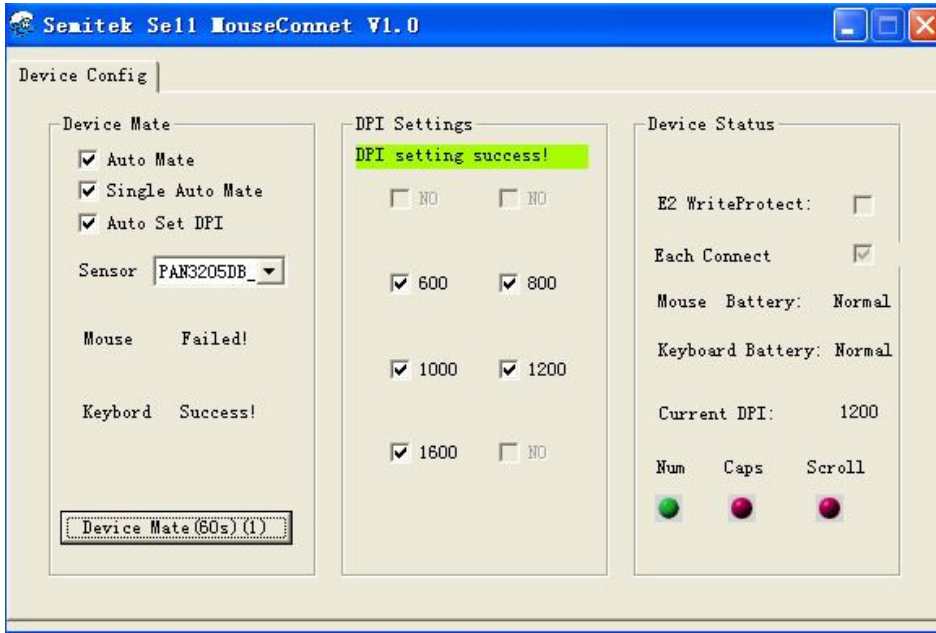


## 六、Press the middle key and right key together。





七、 Press the ESC key and Q key together.



**Keyboard and mouse can function well.**