



LONDON

SIGHTS OF LONDON

ВИЗНАЧНІ МІСЦЯ ЛОНДОНА

TRAFALGAR SQUARE



Trafalgar Square is the geographical centre of London. It was named in honour of Admiral Nelson's victory in the battle of Trafalgar in 1805. The tall Nelson's Column stands in the middle of the square.

THE HOUSES OF PARLIAMENT



The coat of arms
of the City
of Westminster



Its official name is the Palace of Westminster. Most of the building was built in 1840 after the fire of 1834 destroyed the old palace. It is the most famous building in the world.

BIG BEN



At the north end of the Houses of Parliament, by Westminster Bridge, there is the famous clock tower, Big Ben. In fact Big Ben is really the name of the bell in the tower, not of the clock. It is the symbol of London.



WESTMINSTER ABBEY



It is situated in Westminster, the governmental part of London. Nearly all English kings and queens were crowned there. Many outstanding statesmen, scientists, writers and painters are buried there.



WESTMINSTER CATHEDRAL



It was built between 1895 and 1903.

This is the seat of the Cardinal Archbishop and the leading Roman Catholic Church in England.

Its bell tower is 84 metres high.



THE TOWER OF LONDON



It's the London's oldest building. This castle has been a Royal palace, a prison, a place of execution, a zoo, the Royal Mint and an observatory. Today it is a museum and houses the Crown Jewels.

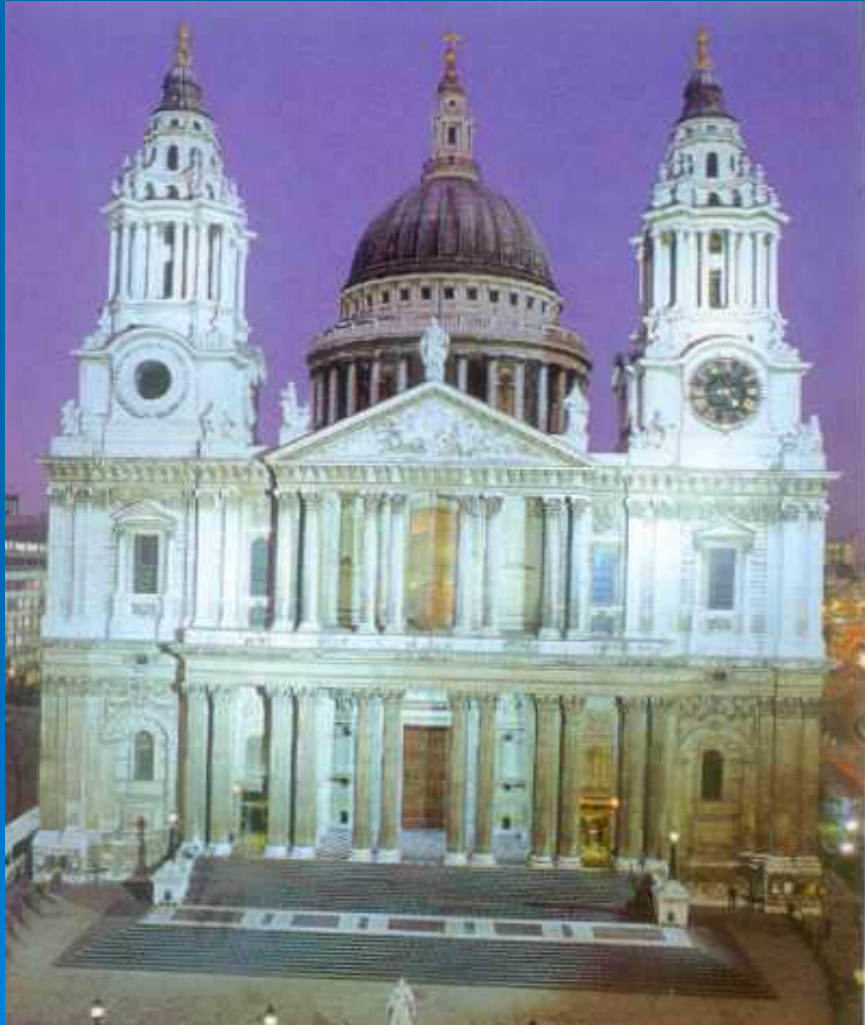


TOWER BRIDGE



The most famous bridge in London is a Tower bridge. Construction of the bridge started in 1886 and took 8 years. Two massive piers support the construction. Victorian gothic style of the façade makes the bridge distinctive.

ST. PAUL'S CATHEDRAL



It is the most striking ancient building of London and the greatest of English churches. It was built in the 17th century by Sir Christopher Wren. Prince Charles and Princess Diana got married here in 1981.



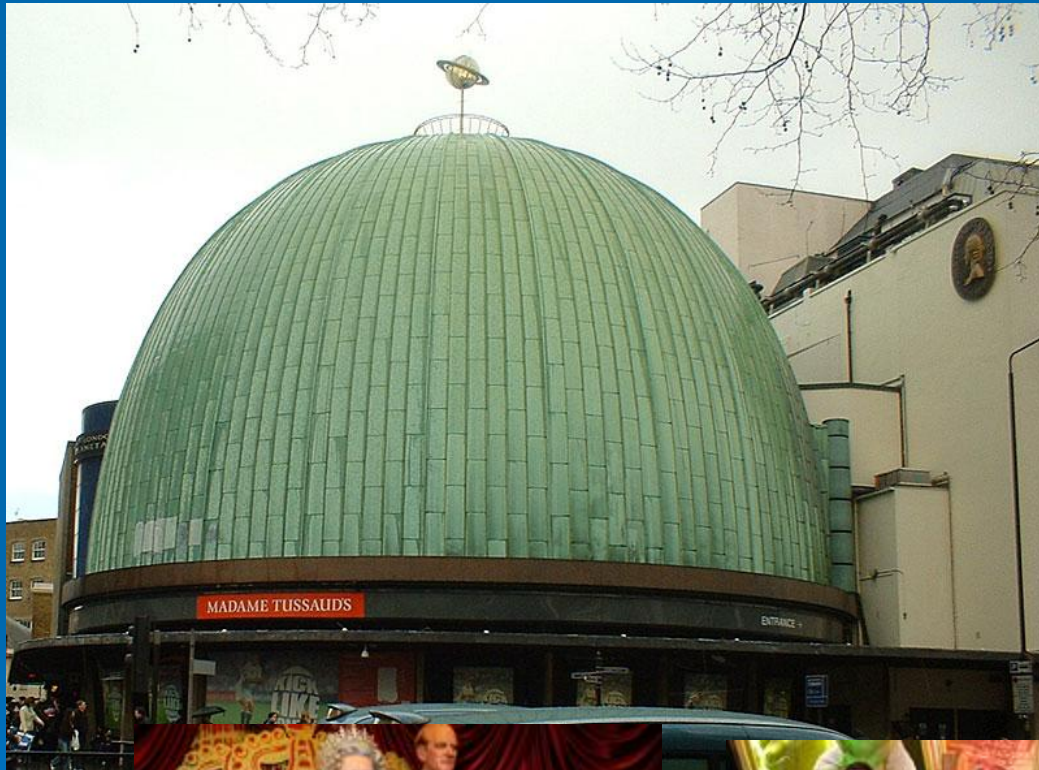
BUCKINGHAM PALACE



This is the
Queen's home.
It was built in
1703.

There is a
great collection
of paintings
there.

MADAME TUSSAUDS



This museum displays waxworks of historical and royal figures, film stars, sports stars and other celebrities.

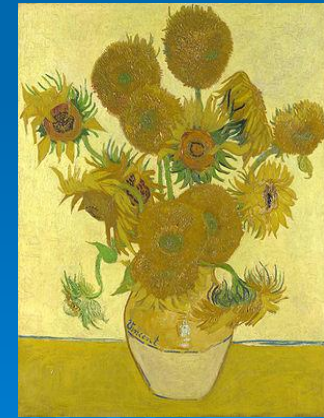


THE NATIONAL GALLERY

The National Gallery is an art museum in Trafalgar Square. It houses a collection of over 2,300 paintings from the middle of the 13th century to 1900.



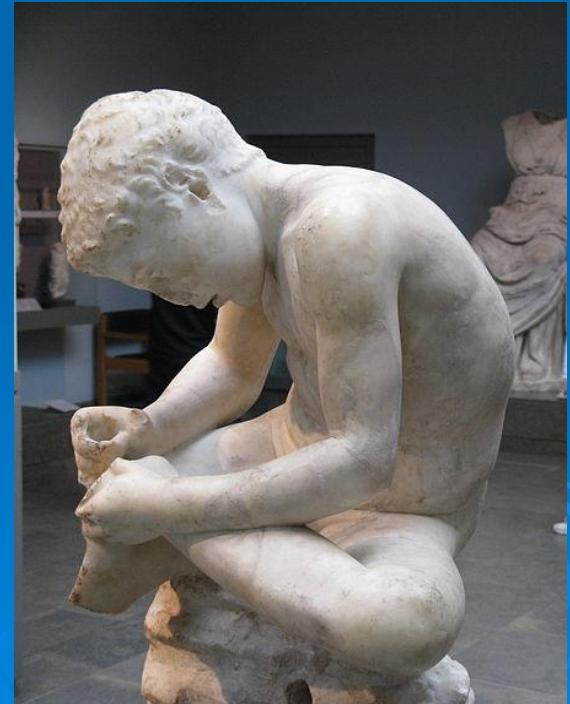
**Leonardo da Vinci:
The Virgin
of the Rocks**



**Van Gogh:
Sunflowers**

THE BRITISH MUSEUM

It is one of the world's greatest museums of human history and culture. Its collection consists of about eight million works.



THE GLOBE THEATRE



This is the Globe Theatre, a modern reconstruction of the theatre, named "Shakespeare's Globe", was opened in 1997.



LONDON EYE



It is a giant wheel situated on the bank of the River Thames. The structure is 135 metres tall and the diameter is 120 metres. It takes 30 minutes to rotate once.



WELCOME TO LONDON!

