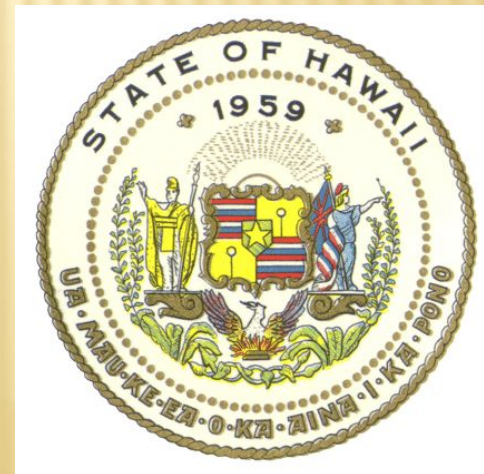


HAWAII



Flag of
Hawaii



Printing of
Hawaii

Hawaii it is the state the USA. Located on the Hawaiian islands in central part of the Pacific ocean in the North hemisphere in the distance 3700 kilometers from continental part of the USA. A population is a 1 419 561 man (from data on 2014). Urban population about 70 %%. Official language - English; partly (in the way of life), among different ethnic groups, other languages are saved, including Hawaiian. The capital and largest city are Honolulu.



Hawaii
Beach

The state encompasses nearly the entire volcanic Hawaiian archipelago, which comprises hundreds of islands spread over 1,500 miles (2,400 km). At the southeastern end of the archipelago, the eight main islands are—in order from northwest to southeast: Ni‘ihau, Kaua‘i, O‘ahu, Moloka‘i, Lāna‘i, Kaho‘olawe, Maui and the Island of Hawai‘i. The last is the largest island in the group; it is often called the "Big Island" or "Hawai‘i Island" to avoid confusion with the state or archipelago. The archipelago is geographical and ethnologically part of the Polynesian subregion of Oceania.



Honolulu

Hawaii's diverse natural scenery, warm tropical climate, abundance of public beaches, oceanic surroundings, and active volcanoes make it a popular destination for tourists, surfers, biologists, and volcanologists. Because of its central location in the Pacific and 19th-century labor migration, Hawaii's culture is strongly influenced by North American and Asian cultures, in addition to its indigenous Hawaiian culture. Hawaii has over a million permanent residents, along with many visitors and U.S. military personnel. Its capital is Honolulu on the island of O'ahu.



Flora and fauna



Hawaiian
seal-monk



Hawaiian
barnacle



Stonewallaby



Hawaiian
stilt



Hawaiian
raven



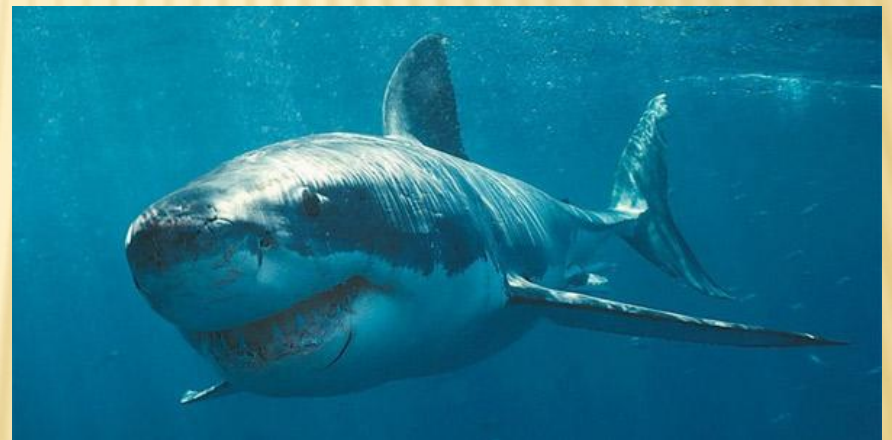
Fish-parrot



Humpback whale



Whale shark



White shark-cannibal



Pittosporum



Kokutan



Aechmea



Purple-Leaved
Hibiscus

Climat

Basic features of climate on Hawaii: soft temperature during throughout the year, moderate humidity, predominance of north-eastern trade winds, considerable difference of amount of rain fallouts within the limits of small distances, rare gales.



Amusing facts about

Hawaii

- Hawaii is the remotest inhabited place on Earth: islands are remote on 3 850 kilometers from the state California (THE USA), on 6 195 kilometers from Japan and on 7 885 kilometers from China.
- The Hawaiian archipelago sprawled on a 2 451 kilometers, that allows to consider Hawaii longest beaded of islands on Earth.
- Hawaii became the fiftieth state, entering in the complement of the USA of August, 20, 1959.
- In 1959 after Hawaii an official nickname was envisaged the "state Aloha" (state of hospitality).
- Hawaii is the widest state the USA, if to measure him from the east westward.
- On Hawaii the highest closeness of population is among all states the USA.
- Hawaii is the only state, where grow coffee.
- On Hawaii annually grown more than 320 000 tone of pineapples.
- The Hawaiian alphabet consists only of 12 letters: 5 vowels (A, E, I, O, U) and 7 consonants (H, K, L, M, N, P, W).

Barack Hussein Obama



On Augusts, 4 1961 (54)
Honolulu, Hawaii, USA

Thanks for watching