

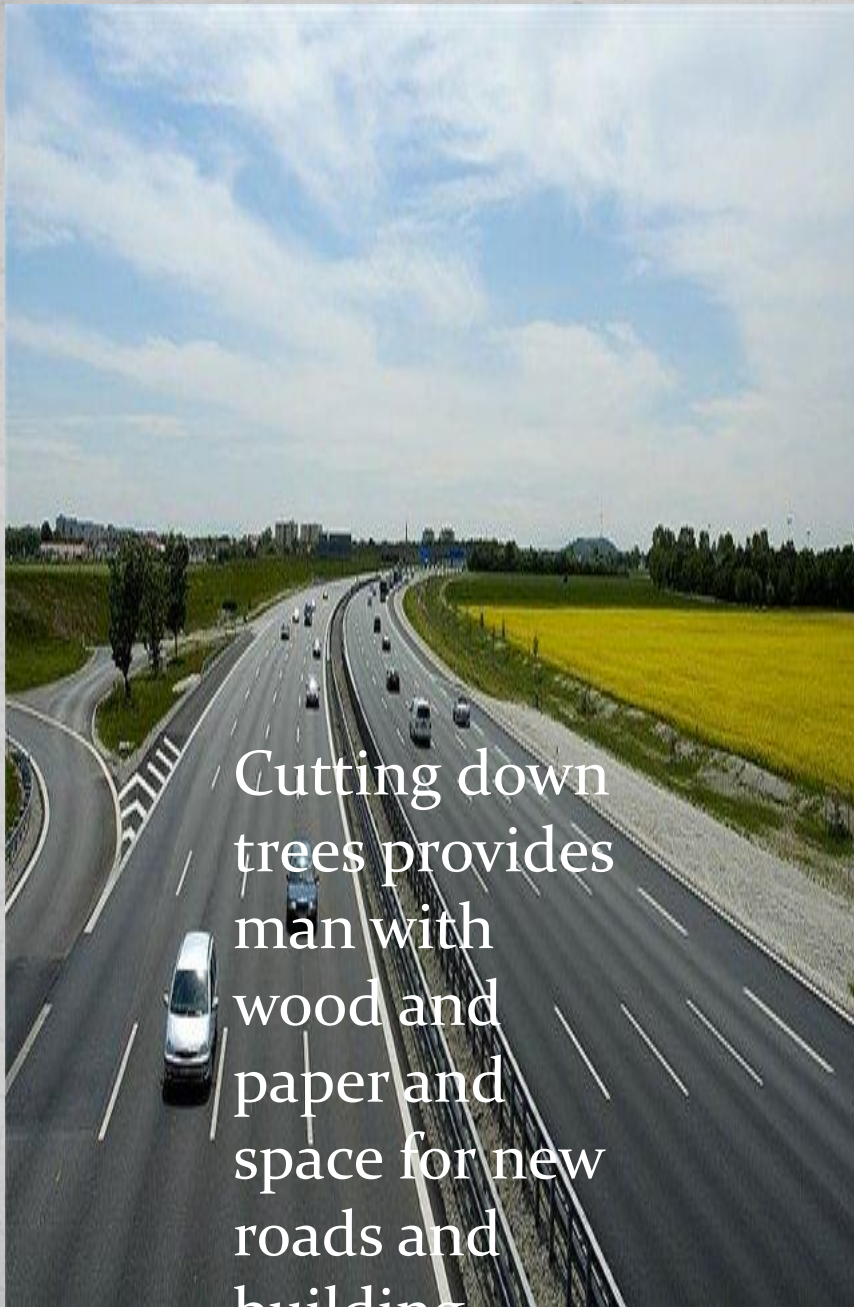
Issues»

Module: Earth
Alert!

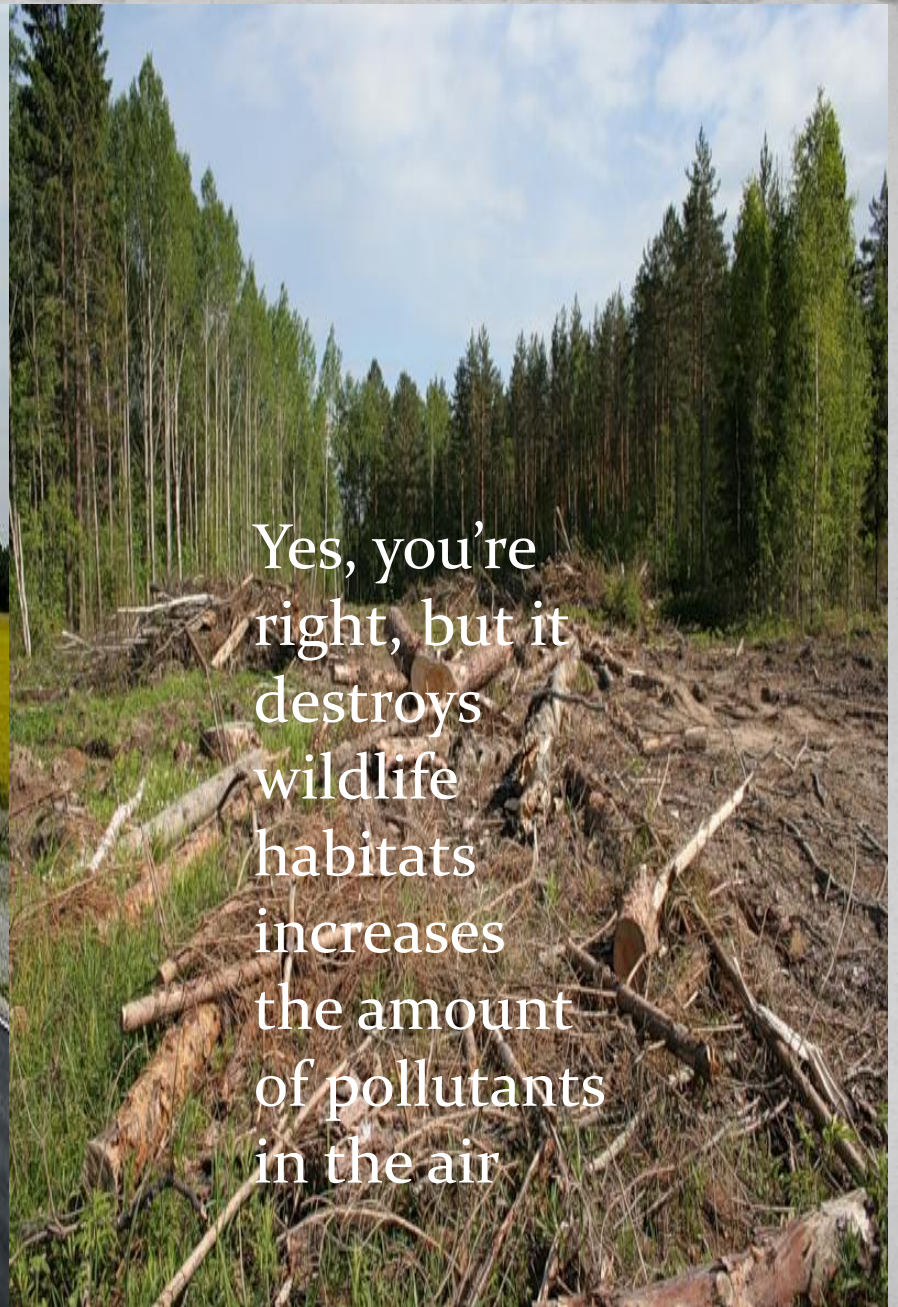
"We never know the worth
of water till, the well
dry"

Tomas Fuller, English historian

https://youtu.be/vTyLSr_VCcghttps://youtu.be/vTyLSr_VCcg

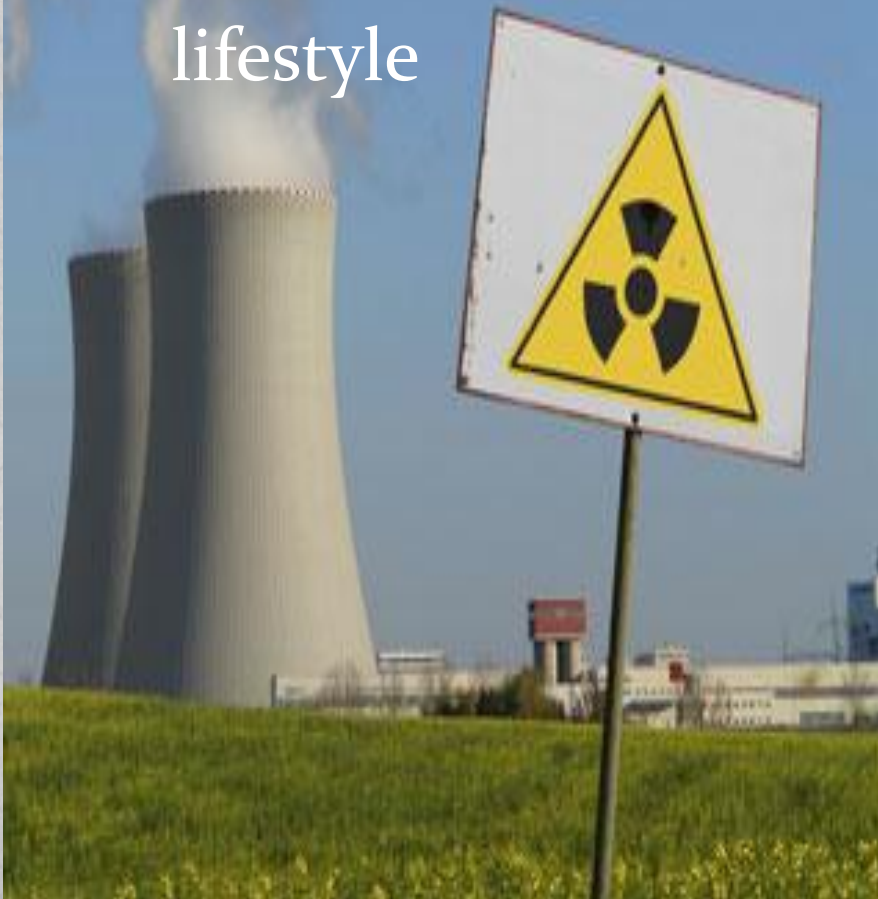


Cutting down trees provides man with wood and paper and space for new roads and building.

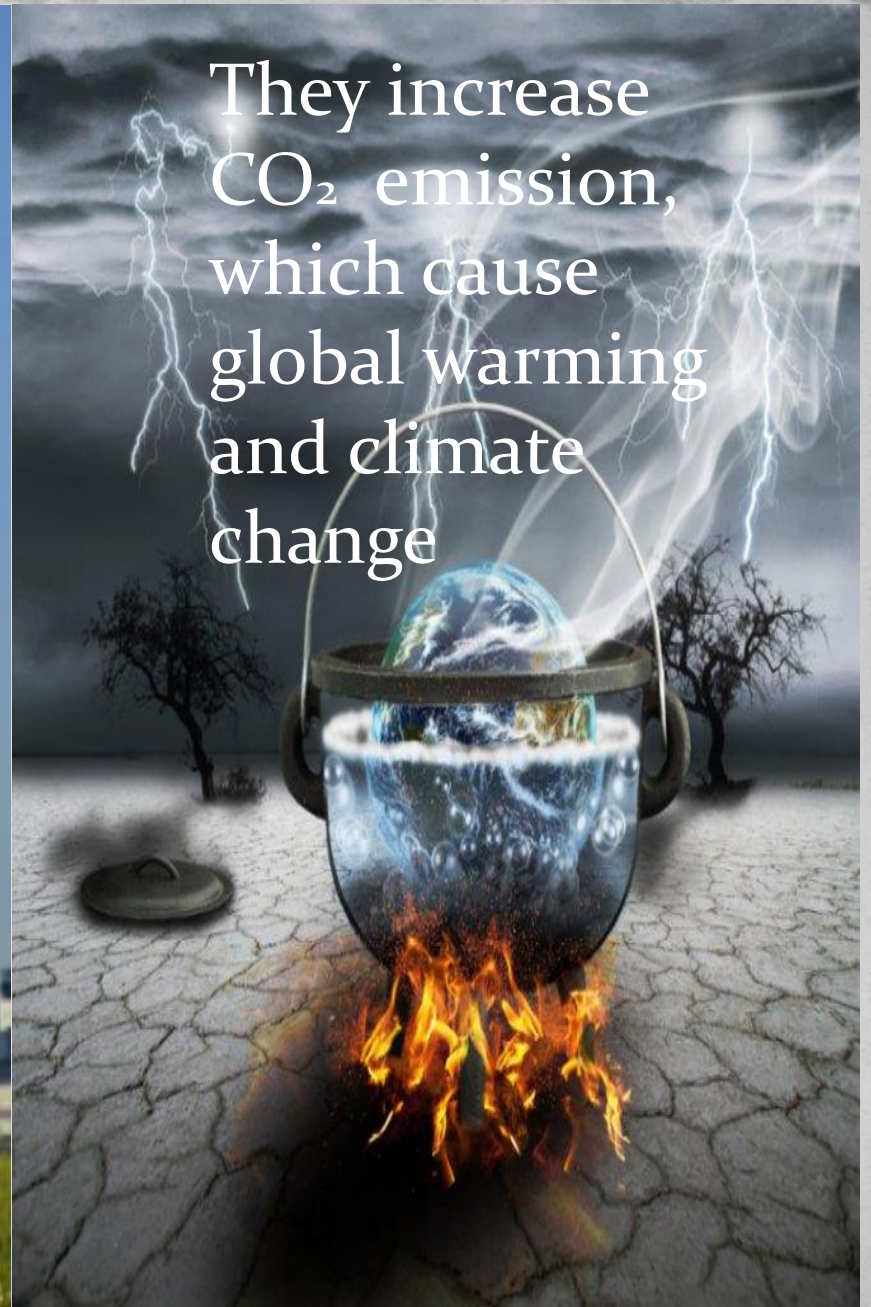


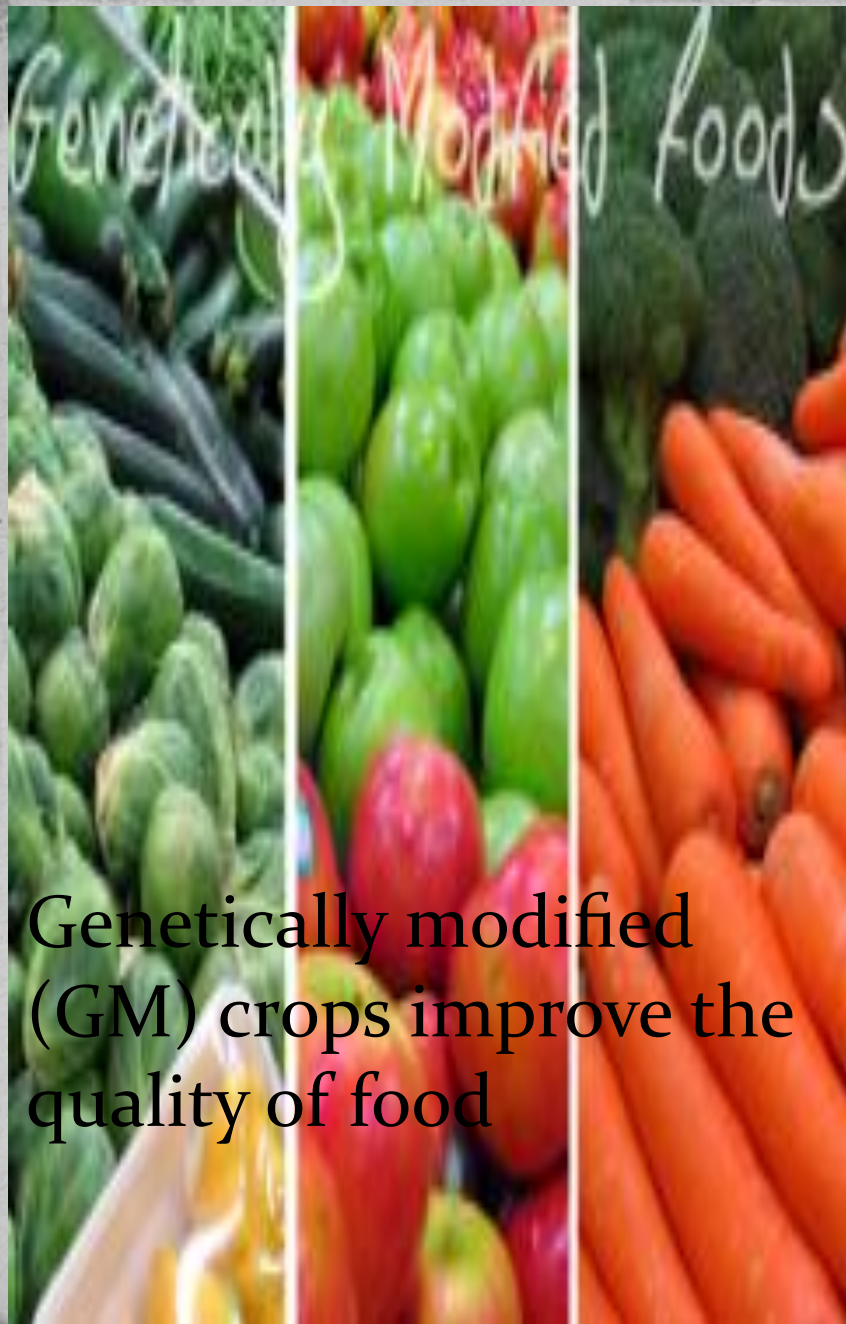
Yes, you're right, but it destroys wildlife habitats increases the amount of pollutants in the air

Power stations
provide
electricity for
our modern
lifestyle



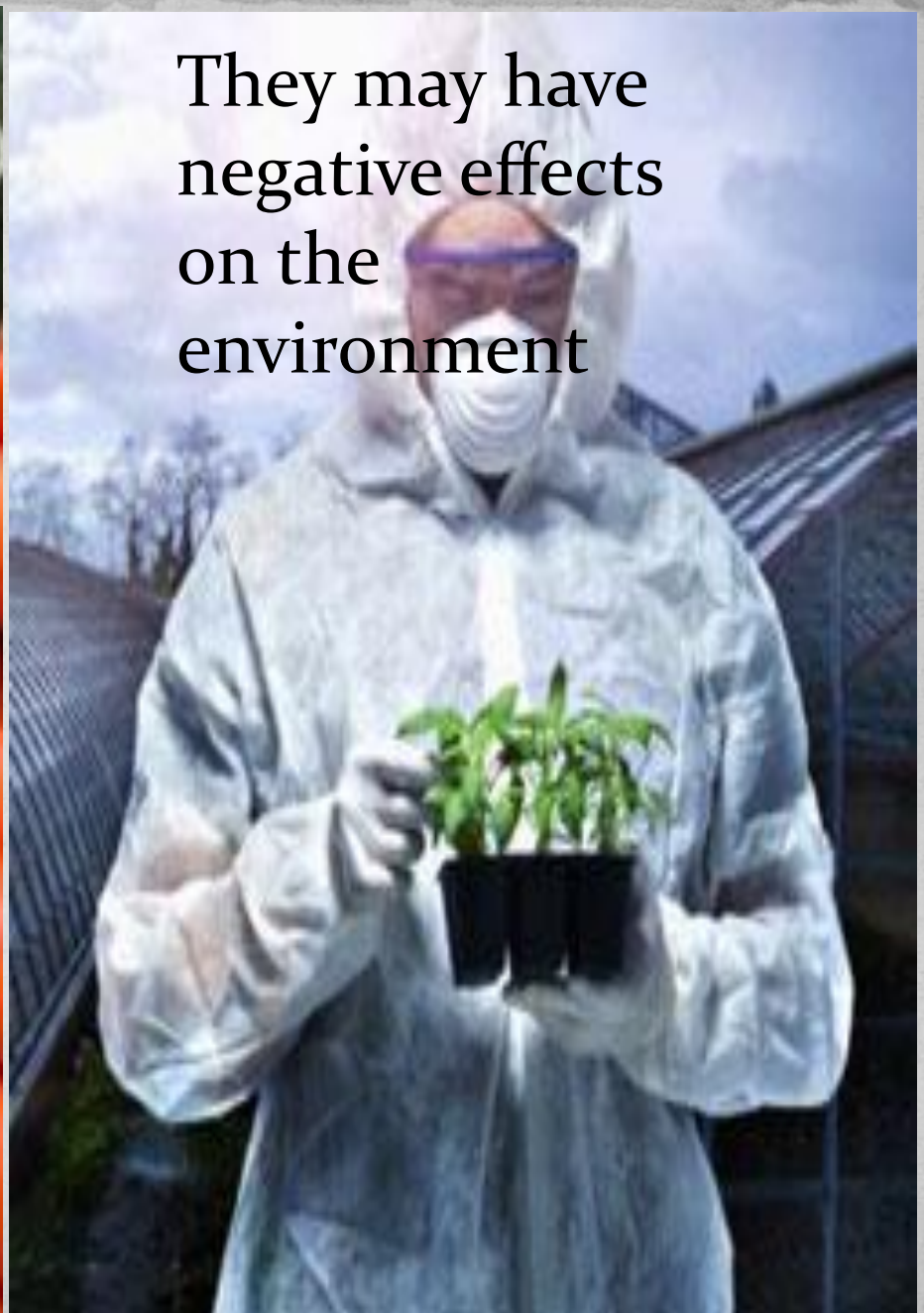
They increase
CO₂ emission,
which cause
global warming
and climate
change





Genetically modified
(GM) crops improve the
quality of food

They may have
negative effects
on the
environment



Modern transport
save us time and
effort



It congests and
pollutes our
towns and cities

EARTH ALERT! FACT FILE



POLAR BEARS MAY BE EXTINCT IN 100 YEARS



The image is a composite photograph. In the foreground, the Lincoln Center's David Geffen Hall is partially submerged in water. The building's iconic triangular, ribbed facade is visible, with its reflection clearly seen in the calm water. In the background, a dense urban skyline, including several skyscrapers, is also partially submerged. The water level appears to be high enough to reach the lower floors of the buildings. The sky is a clear, vibrant blue with a few wispy white clouds. The overall scene conveys a sense of environmental impact and the potential consequences of rising sea levels.

SEA LEVEL COULD RISE BY 50 CM IN
THE NEXT 100 YEARS

UK WINTERS COULD BECOME 30%
WETTER BY 2100



The image is a composite. On the left side, there is a detailed palm tree with green fronds and a brown, textured trunk. The right side of the image shows a cold, icy landscape. In the foreground, several penguins are swimming in dark blue water. In the background, there are large, white icebergs floating in the sea under a heavy, grey, and cloudy sky. The overall composition suggests a contrast between warm and cold climates.

THE TOP TEN
WARMEST YEARS
SINCE 1860 HAVE ALL
OCCURRED SINCE
1980

A vibrant tropical rainforest scene. In the foreground, several plants with large, bright green, lanceolate leaves and tall, spiky red flower spikes are prominent. The background is filled with a dense canopy of various tropical trees and plants, including several tall palm trees with long, feathery fronds. Sunlight filters through the leaves, creating a dappled light effect. The overall atmosphere is lush and verdant.

MORE THAN 150 ACRES OF RAINFOREST ARE
LOST EVERY MINUTE

Adoption Certificate

This is to certify that Harry 1) Baker
has adopted a(n) 2) oak tree.

Details: supports a rich variety of 3) wildlife
can live for over 4) 400 years

Your personalised message: "5) Happy
Birthday, Harry! Hope you like the gift!"

You also received: 6) lifetime membership of
the "Adopt - a - Tree Foundation" &
regular updates from us.

Check your answers

- | | | |
|-----------------|-------------|------------|
| ● 1.A increases | B provides | C improves |
| ● 2.A destroys | B builds | C plants |
| ● 3.A decreases | B increases | C pollutes |
| ● 4.A cuts down | B congests | C causes |
| ● 5.A congests | B destroys | C provides |
| ● 6.A saves | B pollutes | C provides |
| ● 7.A causes | B improves | C saves |