

# Chapter Goals

- Describe the core issues related to **computer networks**
- List various **types** of networks and their **characteristics**
- Explain various topologies of **local-area networks**
- Explain why network technologies are best implemented as **open systems**
- Compare and contrast various technologies for **home Internet connections**

# Chapter Goals

- Explain **packet** switching
- Describe the basic roles of various **network protocols**
- Explain the role of a **firewall**
- Compare and contrast network **hostnames** and **IP addresses**
- Explain the **domain name** system
- Describe **cloud computing** and its benefits

# Networking

## Computer network

A collection of computing devices connected in order to communicate and share resources

Connections between computing devices can be physical using wires or cables or wireless using radio waves or infrared signals

*Can you name some of the devices in a computer network?*

# Networking

## Node (host)

Any device on a network

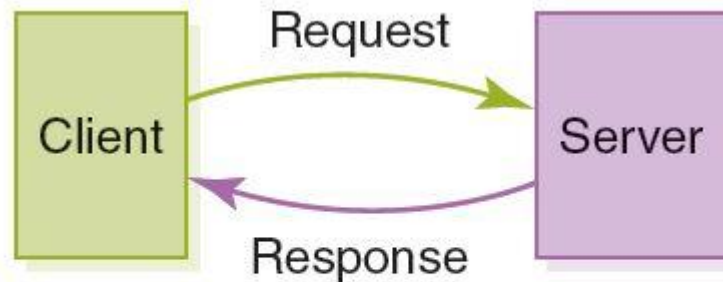
## Data transfer rate (bandwidth)

The speed with which data is moved from one place to another on a network

*Why is bandwidth so key?*

# Networking

Computer networks have opened up an entire frontier in the world of computing called the **client/server model**



**FIGURE 15.1** Client/server interaction

# Networking

## Protocol

A set of rules that defines how data is formatted and processed on a network

## File server

A computer dedicated to storing and managing files for network users

## Web server

A computer dedicated to responding to requests for web pages

## P2P model

A decentralized approach that shares resources and responsibilities among many “peer” computers

# Types of Networks

## Local-area network (LAN)

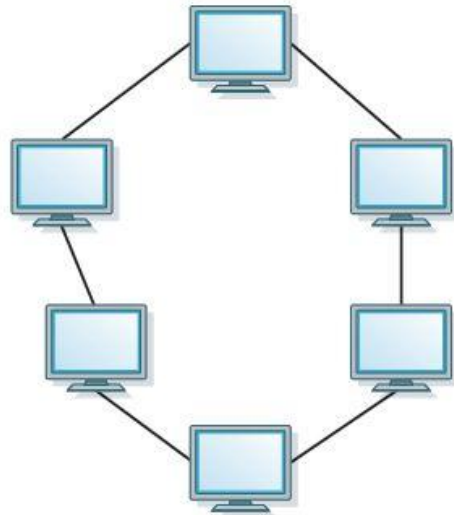
A network that connects a relatively small number of machines in a relatively close geographical area

**Ring topology** connects all nodes in a closed loop on which messages travel in one direction

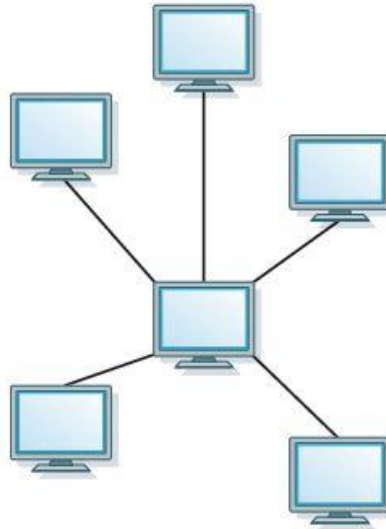
**Star topology** centers around one node to which all others are connected and through which all messages are sent

**Bus topology** nodes are connected to a single communication line that carries messages in both directions

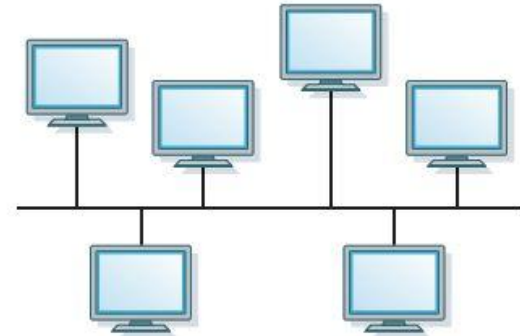
# Types of Networks



Ring topology



Star topology



Bus topology

FIGURE 15.2 Network topologies

## Ethernet

The industry standard bus technology for local-area networks



# Types of Networks

## Wide-area network (WAN)

A network that connects local-area networks over a potentially large geographic distance

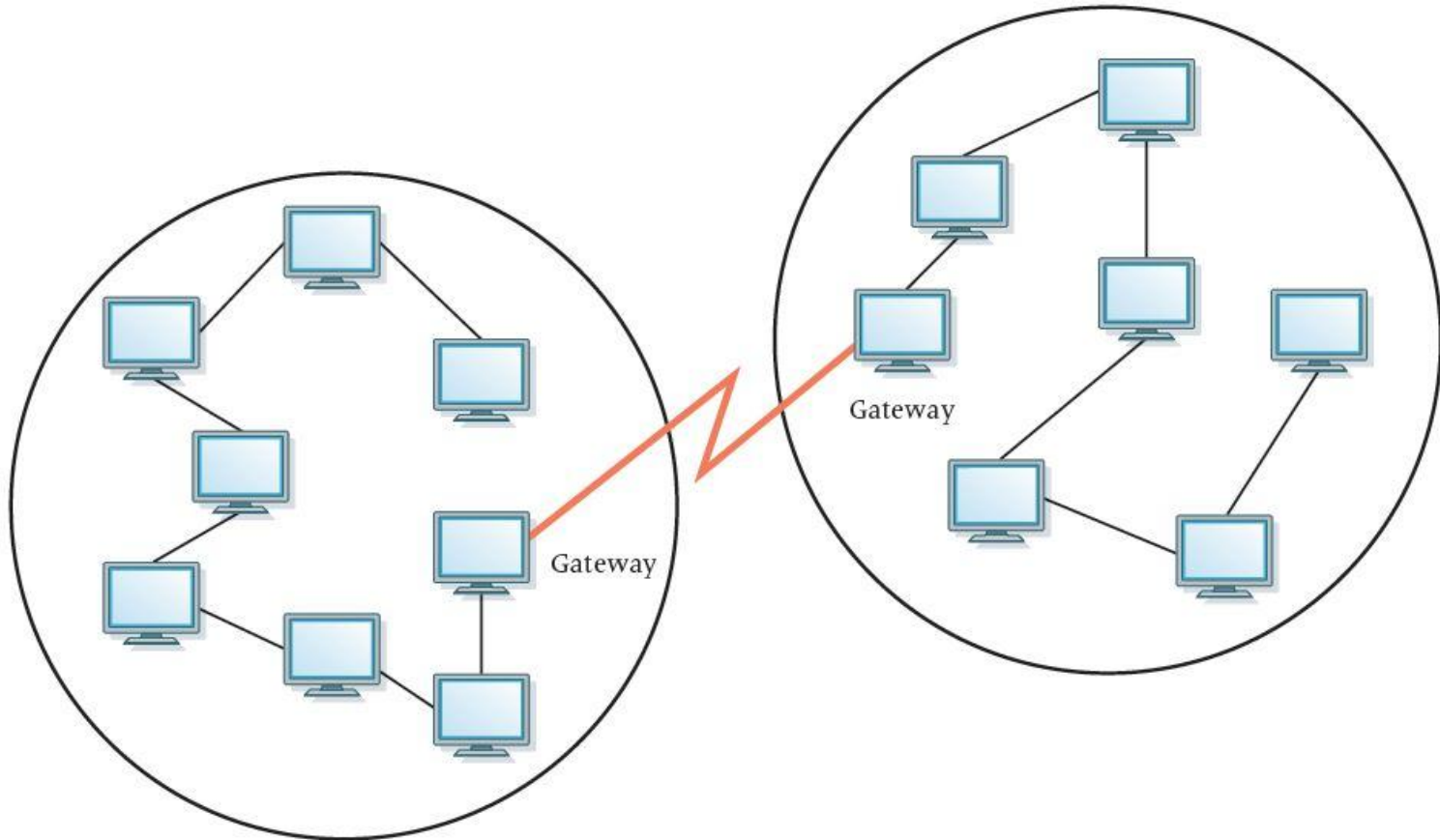
## Metropolitan-area network (MAN)

The communication infrastructures that have been developed in and around large cities

## Gateway

One particular set up to handle all communication going between that LAN and other networks

# Types of Networks



**FIGURE 15.3** Local-area networks connected across a distance to create a wide-area network

# Types of Networks

## Internet

A wide area network that spans the planet

*So, who owns the Internet?*

# Internet Connections

## Wireless network

A network in which devices communicate with other nodes through a wireless access point

## Bluetooth

A technology used for wireless communication over short distances

# Internet Connections

## Internet backbone

A set of high-speed networks that carry Internet traffic, provided by companies such as AT&T, Verizon, GTE, British Telecom, and IBM

## Internet service provider (ISP)

An organization providing access to the Internet

# Internet Connections

Various technologies available to connect a home computer to the Internet

**Phone modem** converts computer data into an analog audio signal for transfer over a telephone line, and then a modem at the destination converts it back again into data

**Digital subscriber line (DSL)** uses regular copper phone lines to transfer digital data to and from the phone company's central office

**Cable modem** uses the same line that your cable TV signals come in on to transfer the data back and forth

# Internet Connections

## Broadband

A connection in which transfer speeds are faster than 768 kilobits per second

- DSL connections and cable modems are broadband connections
- The speed for **downloads** (getting data from the Internet to your home computer) may not be the same as **uploads** (sending data from your home computer to the Internet)

# Packet Switching

## Packet

A unit of data sent across a network

## Router

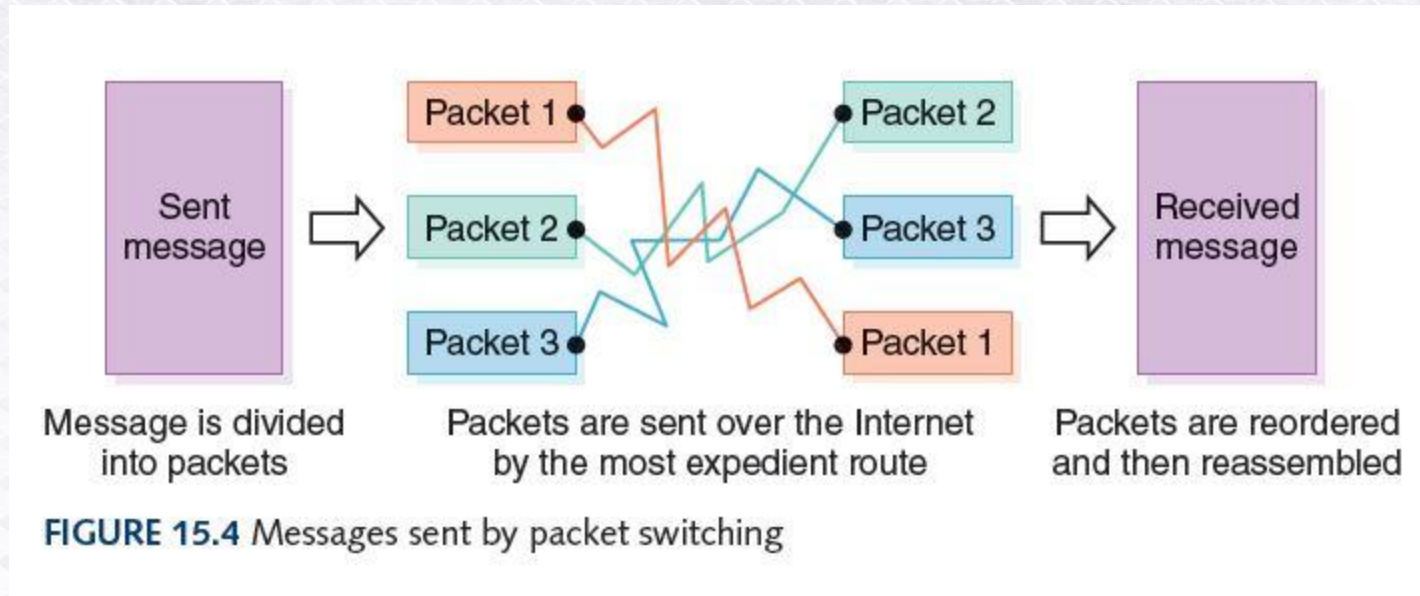
A network device that directs a packet between networks toward its final destination

## Packet switching

Messages are divided into fixed-sized, numbered packets; packets are individually routed to their destination, then reassembled



# Packet Switching



Take a message, break it into three packets, and simulate this process

# Open Systems

## A logical progression...

### Proprietary system

A system that uses technologies kept private by a particular commercial vendor

### Interoperability

The ability of software and hardware on multiple machines and from multiple commercial vendors to communicate

### Open systems

Systems based on a common model of network architecture and a suite of protocols used in its implementation

# Open Systems

Number	Layer
7	Application layer
6	Presentation layer
5	Session layer
4	Transport layer
3	Network layer
2	Data Link layer
1	Physical layer

**FIGURE 15.5** The layers of the OSI Reference Model

## Open Systems Interconnection Reference Model

A seven-layer logical break down of network interaction to facilitate communication standards

Each layer deals with a particular aspect of network communication

# Network Protocols

- Network protocols are layered such that each one relies on the protocols that underlie it
- Sometimes referred to as a **protocol stack**

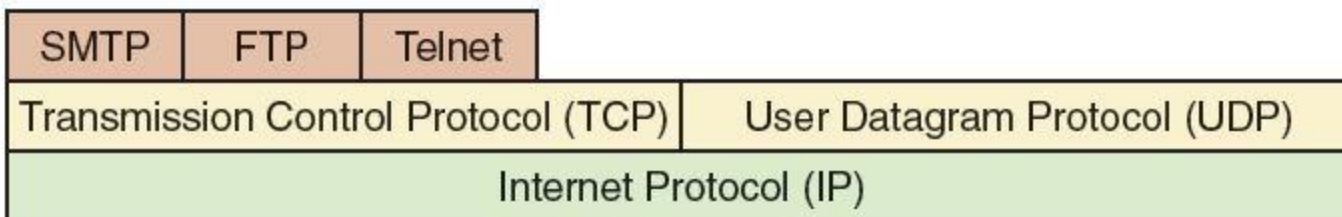


FIGURE 15.6 Layering of key network protocols

# TCP/IP

## Transmission Control Protocol (TCP)

Software that breaks messages into packets, hands them off to the IP software for delivery, and then orders and reassembles the packets at their destination

## Internet Protocol (IP)

Software that deals with the routing of packets through the maze of interconnected networks to their final destination

# TCP/IP

## User Datagram Protocol (UDP)

An alternative to TCP that is faster but less reliable

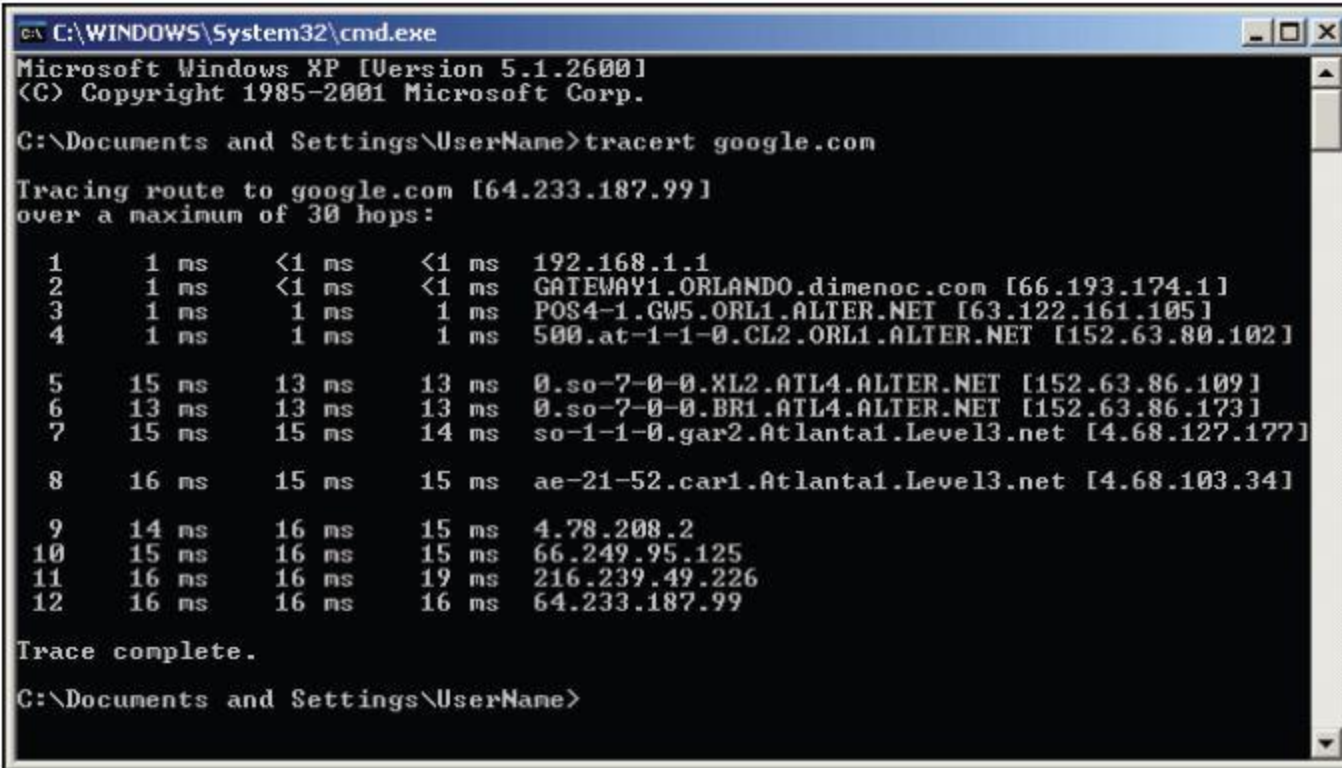
## Ping

A program used to test whether a particular network computer is active and reachable

## Traceroute

A program that shows the route a packet takes across the Internet

# Traceroute in Action



```
C:\WINDOWS\System32\cmd.exe
Microsoft Windows XP [Version 5.1.2600]
(C) Copyright 1985-2001 Microsoft Corp.

C:\Documents and Settings\UserName>tracert google.com

Tracing route to google.com [64.233.187.99]
over a maximum of 30 hops:

  0  1 ms    <1 ms   <1 ms   192.168.1.1
  1  1 ms    <1 ms   <1 ms   GATEWAY1.ORLANDO.dimenoc.com [66.193.174.1]
  2  1 ms    1 ms    1 ms    POS4-1.GW5.ORL1.ALTER.NET [63.122.161.105]
  3  1 ms    1 ms    1 ms    500.at-1-1-0.CL2.ORL1.ALTER.NET [152.63.80.102]

  4  15 ms   13 ms   13 ms   0.so-7-0-0.XL2.ATL4.ALTER.NET [152.63.86.109]
  5  13 ms   13 ms   13 ms   0.so-7-0-0.BRI.ATL4.ALTER.NET [152.63.86.173]
  6  15 ms   15 ms   14 ms   so-1-1-0.gar2.Atlanta1.Level3.net [4.68.127.177]

  7  16 ms   15 ms   15 ms   ae-21-52.car1.Atlanta1.Level3.net [4.68.103.34]

  8  14 ms   16 ms   15 ms   4.78.208.2
  9  15 ms   16 ms   15 ms   66.249.95.125
 10  16 ms   16 ms   19 ms   216.239.49.226
 11  16 ms   16 ms   16 ms   64.233.187.99

Trace complete.

C:\Documents and Settings\UserName>
```

**FIGURE 15.7** The traceroute utility

Used with permission from Microsoft

# High-Level Protocols

Other protocols build on TCP/IP protocol suite

**Simple Mail Transfer Protocol (SMTP)** used to specify transfer of electronic mail

**File Transfer Protocol (FTP)** allows a user to transfer files to and from another computer

**Telnet** used to log onto one computer from another

**Hyper Text Transfer Protocol (http)** allows exchange of Web documents

*Which of these have you used?*



# High-Level Protocols

Protocol	Port
Echo	7
File Transfer Protocol (FTP)	21
Telnet	23
Simple Mail Transfer Protocol (SMTP)	25
Domain Name Service (DNS)	53
Gopher	70
Finger	79
Hypertext Transfer Protocol (HTTP)	80
Post Office Protocol (POP3)	110
Network News Transfer Protocol (NNTP)	119
Internet Relay Chat (IRC)	6667

**FIGURE 15.8** Some protocols and the ports they use

## Port

A numeric designation that corresponds to a particular high-level protocol

# MIME Types

## MIME type

A standard for defining the format of files that are included as email attachments or on websites

*What does MIME stand for?*

Multipurpose Internet Mail Extension

# Firewalls

## Firewall

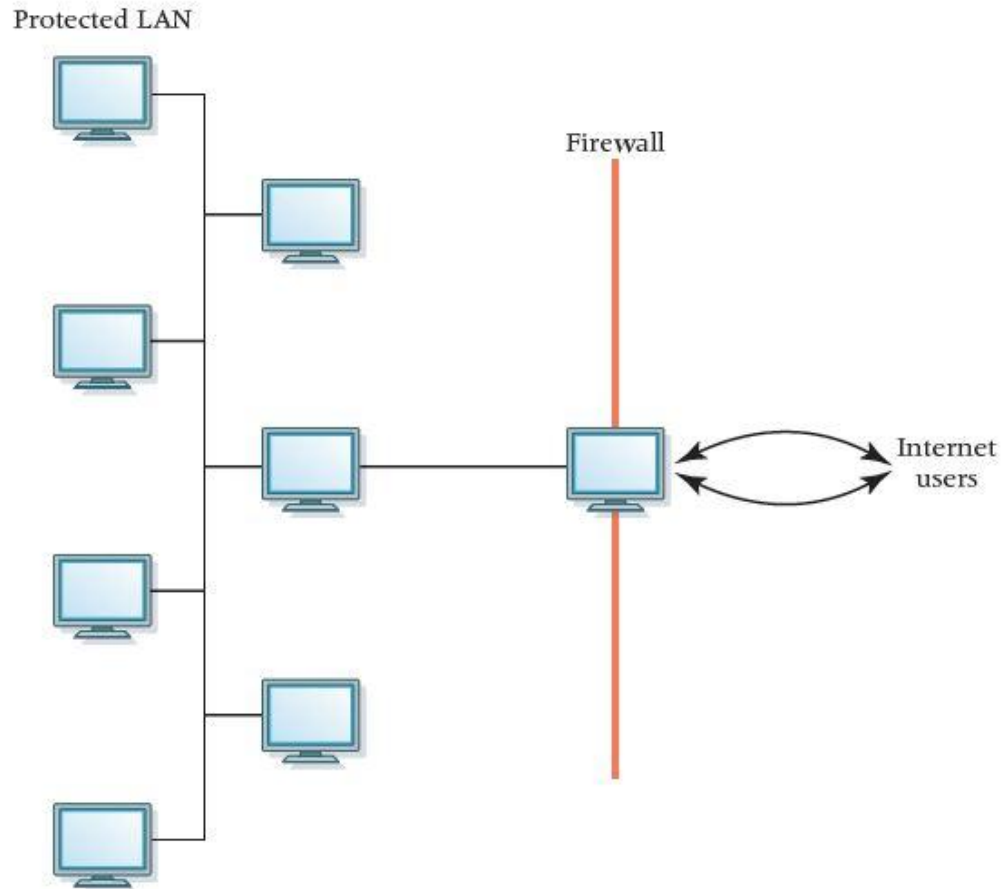
A gateway machine and its software that protects a network by filtering the traffic it allows

## Access control policy

A set of rules established by an organization that specifies what types of network communication are permitted and denied

*Have your messages ever been returned undelivered, blocked by a firewall?*

# Firewalls



**FIGURE 15.9** A firewall protecting a LAN.

# Network Addresses

## Hostname

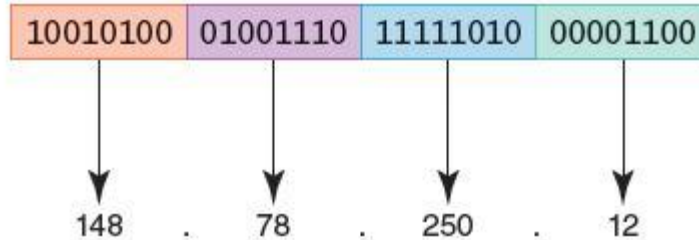
A name made up of words separated by dots that uniquely identifies a computer on the Internet

## IP address

An address made up of four one-byte numeric values separated by dots that uniquely identifies a computer on the Internet

*Is there a correspondence between the parts of a hostname and an IP address?*

# Network Addresses



**FIGURE 15.10** An IP address stored in four bytes

*What is wrong with the IP4 strategy?*

*How did smartphones contribute to the problem?*

# Network Addresses

## IPv4

The last block was assigned in 2011

## IPv6

32 bits organized into 4 groups of 8

**FE80:0000:0000:0000:0202:B3FF:FE1E:8329**

They work in parallel

# Domain Name System

## Host number

The part of the IP address that specifies a particular host (machine) on the network *Yes, but what is it?*

## Domain name

The part of a hostname that specifies a specific organization or group

## Top-level domain (TLD)

The last section of a domain name that specifies the type of organization or its country of origin



# Domain Name System

## Domain name system (DNS)

A distributed system for managing hostname resolution

## Domain name server

A computer that attempts to translate a hostname into an IP address

## Domain Squatting

Ransoming domain names

*Should the tables containing hostname/IP mappings be sorted or unsorted? Why?*

# Domain Name System

Top-Level Domain	General Purpose
.aero	Aerospace industry
.biz	Business
.com*	U.S. commercial (unrestricted)
.coop	Cooperative
.edu*	U.S. educational
.gov*	U.S. government
.info	Information (unrestricted)
.int*	International organizations
.jobs	Employment
.mil*	U.S. military
.museum	Museums
.name	Individuals and families
.net*	Network (unrestricted)
.org*	Nonprofit organization (unrestricted)
.pro	Certain professions

**FIGURE 15.11** Some top-level domains and their general purpose (\* indicates an original TLD)

# Domain Name System

Organizations based in countries other than the United States use a top-level domain that corresponds to their two-letter country codes

Country Code TLD	Country
.au	Australia
.br	Brazil
.ca	Canada
.gr	Greece
.in	India
.ru	Russian Federation
.uk	United Kingdom

**FIGURE 15.12** Some of the top-level domain names based on country codes.

*Have you  
emailed  
someone  
in another  
country?*

# Domain Name System

social	furniture	dental	paris	media
career	town	rocks	cooking	rodeo
nyc	trade	webcam	vote	actor
vacations	industries	wiki	productions	flights
rentals	catering	dating	bargains	cool
pics	guitars	tax	dance	email
farm	education	ninja	coffee	shoes
menu	kitchen	land	support	associates
institute	camp	center	directory	florist

*A very small, random selection of new TLDs that are available as of mid-2014*

# Who Controls the Internet?

## Control of IP addresses and domain names

- Internet began as ARPANET, a project of the US Dept. of Defense
- Control subcontracted to ICANN in 1998
- US gov't to further reduce role as early as 2015

## FCC proposal

- Would allow ISPs to provide “premium” access to certain customers, perhaps by deliberately slowing down data transfer for others
- **Net neutrality** - The principle that ISPs should deliver data to everyone equally, as fast as the technology allows

# Cloud Computing

- **Public clouds** are accessible by any subscriber
- **Private clouds** are established for a specific group or organization
- **Community clouds** are shared among two or more organizations with the same needs
- **Hybrid clouds** are some combination of the others

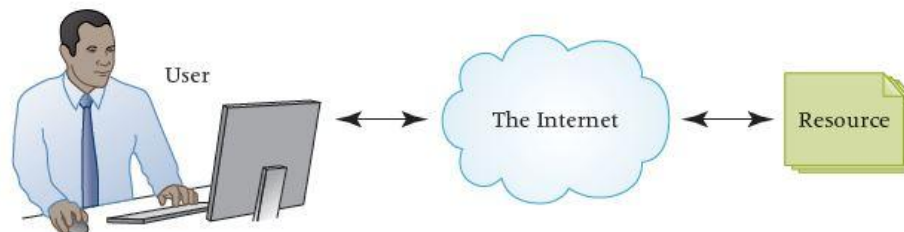


FIGURE 15.13 Internet communication depicted using a cloud

# Ethical Issues

## Effects of Social Networking

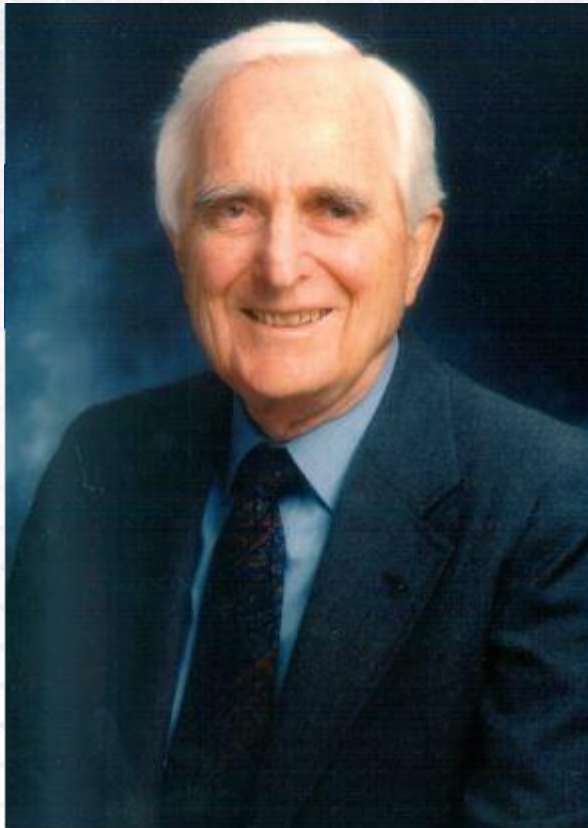
*What are some examples of popular social networking sites?*

*Who uses social networking?*

*What are the **benefits** and the **disadvantages** of using these social networking sites?*

*Do the benefits of social networking out weigh the potential costs?*

# Who am I?



Courtesy of Doug Engelbart Institute

*What two major  
awards did  
I win?  
For what  
were they  
given?*



# Do you know?



*What is SETI? What does it have to do with extraterrestrials?*

*What is a protocol?*

*For what did Bill Gates receive a Knighthood from Queen Elizabeth?*

*The Kernel suggested that the causes of death for a South Korean man in 2005 and a Taiwanese man in 2012 were the same. What was the suggested cause?*