

Artificial Intelligence and Human Intelligence

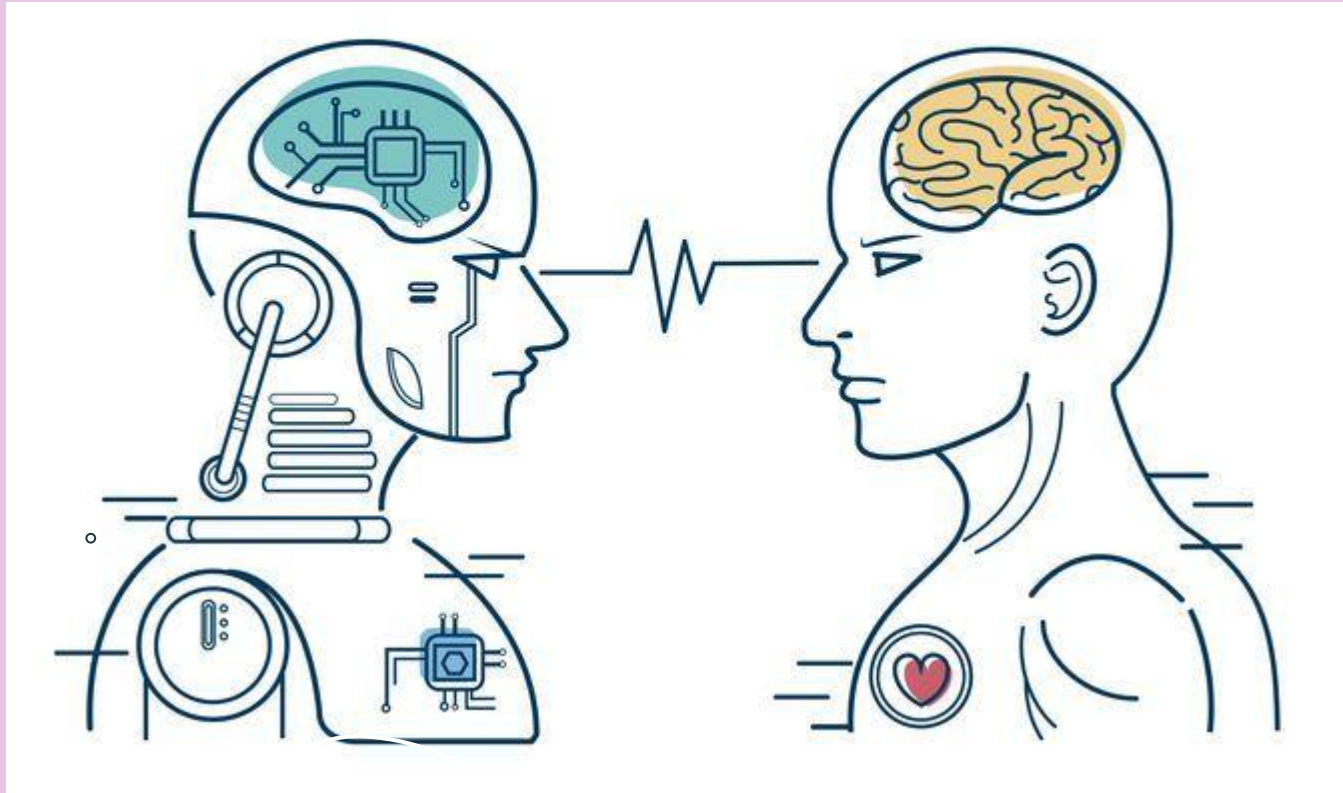


Table of Contents

1 Artificial Intelligence



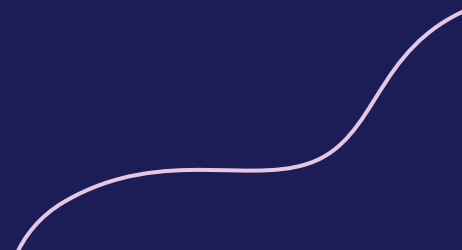
3 Artificial Intelligence
vs. Human Intelligence



2 Human Intelligence



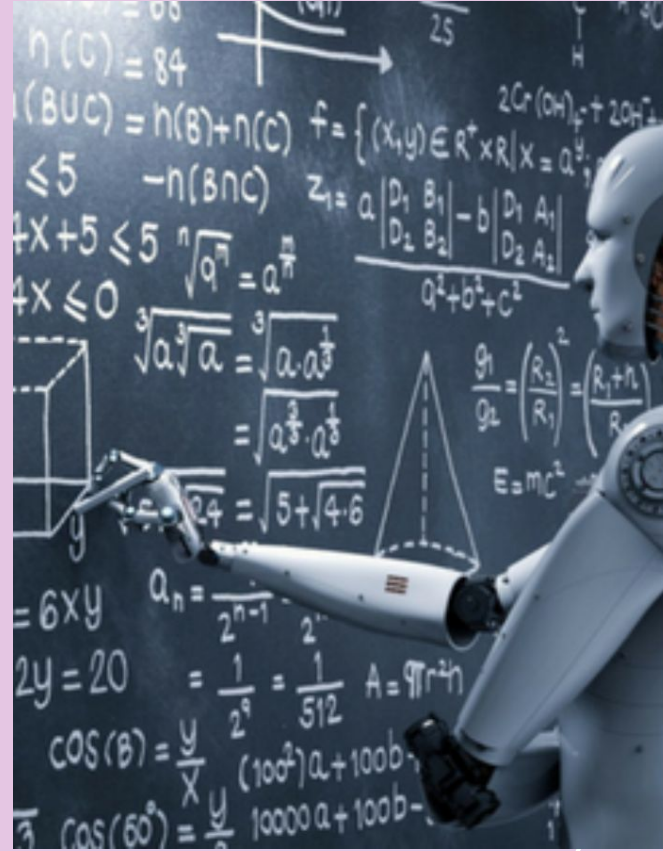
4 Applications of
Artificial Intelligence



Artificial Intelligence

Artificial intelligence (AI) is a branch of Data Science that focuses on building smart machines capable of performing a wide range of tasks that usually require human intelligence and cognition.

AI programs may mimic or simulate cognitive behaviors or traits associated with human intelligence



Human Intelligence

Human Intelligence refers to humans' intellectual capability that allows us

- to think
- learn from different experiences
- understand complex concepts
- apply logic and reason
- solve mathematical problems
- recognize patterns
- make inferences and decisions
- retain information
- communicate with fellow human beings



Artificial Intelligence vs. Human Intelligence



Nature

Aims to build machines that can mimic human behavior and perform human-like actions

Aims to adapt to new environments by utilizing a combination of different cognitive processes



o

Functioning

- o AI-powered machines rely on data and specific instructions fed into the system.

Humans use the brain's computing power, memory, and ability to think



x

o

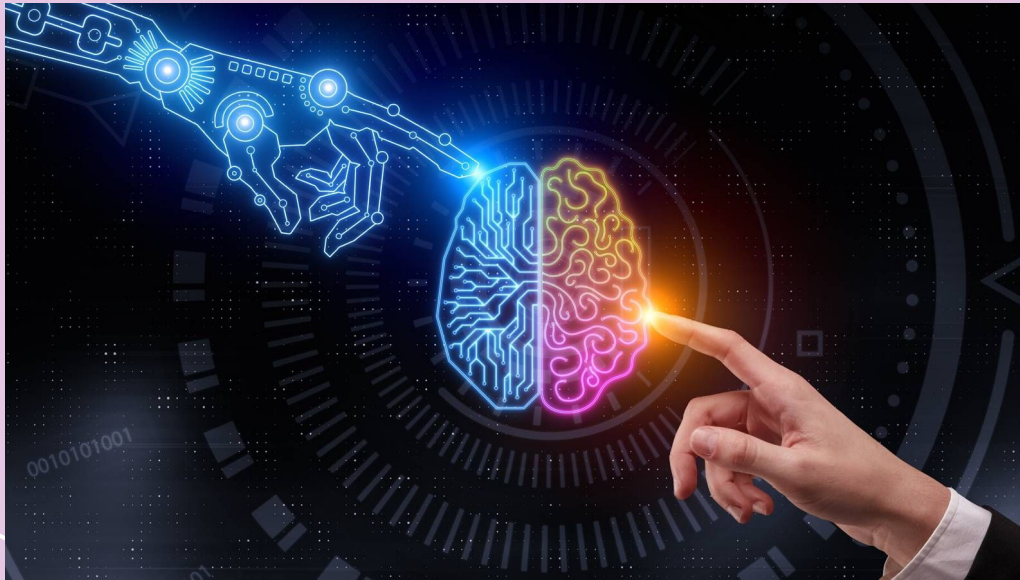
+

Learning power

o

Intelligent thought and intelligent behavior lie at the core of Human Intelligence
Machines cannot think

Human Intelligence is all about learning from various incidents and past experiences.



o

They can learn from data and through continuous training, but they can never achieve the thought process unique to humans.

Impacts of AI on future

1. Automation of tasks

- Tasks or roles that include a degree of repetition or the consumption and interpretation of vast amounts of data are now delivered and processed by a computer, sometimes not needing the intervention of humans

2. New opportunities

- As AI and machine learning execute the manual tasks that humans used to perform, it opens up and breeds new industries and opportunities for the workforce.

3. Economic growth model

- AI can unlock tons of opportunities for businesses and improve productivity and participation within the organisation

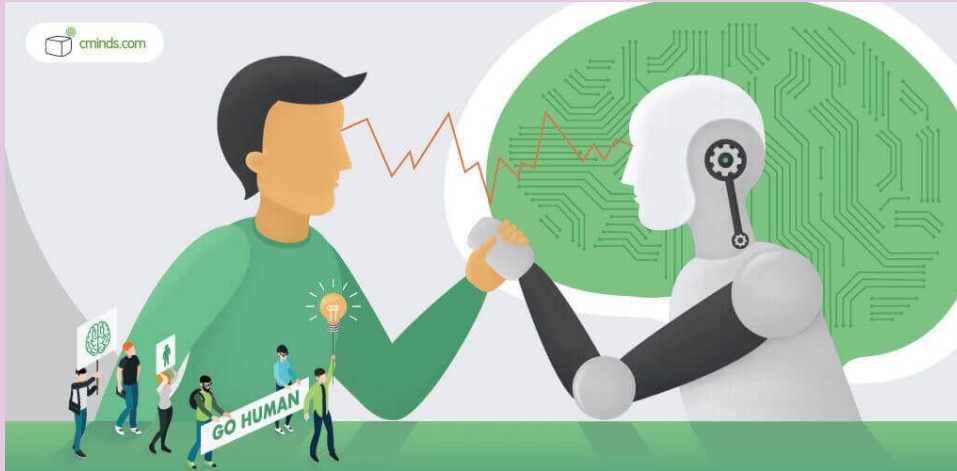


4. More room for creativity and innovation

- With robots, AI, and automation taking some of the mundane and manual tasks out of our hands

5. Role of work

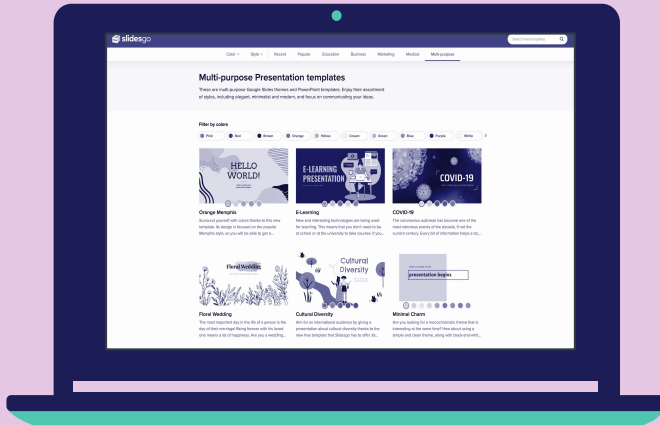
- Understanding the function of work beyond merely sustaining a standard of living is even more important.



Applications of Artificial Intelligence

AI is being tested and used:

- in the healthcare industry for dosing drugs, treatment, for surgical procedures in the operating room
- computers that play chess and self-driving cars
- in the financial industry, to detect and flag activity in banking and finance
- debit card and large account deposits



× Categorization of Artificial Intelligence

Artificial intelligence can be divided into two different categories:

weak

Weak artificial intelligence embodies a system designed to carry out one particular job.

\

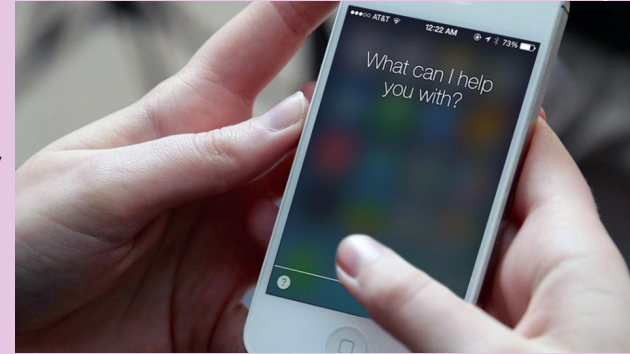
- video games (the chess)
- personal assistants (Amazon's Alexa, Apple's Siri and Alisa)



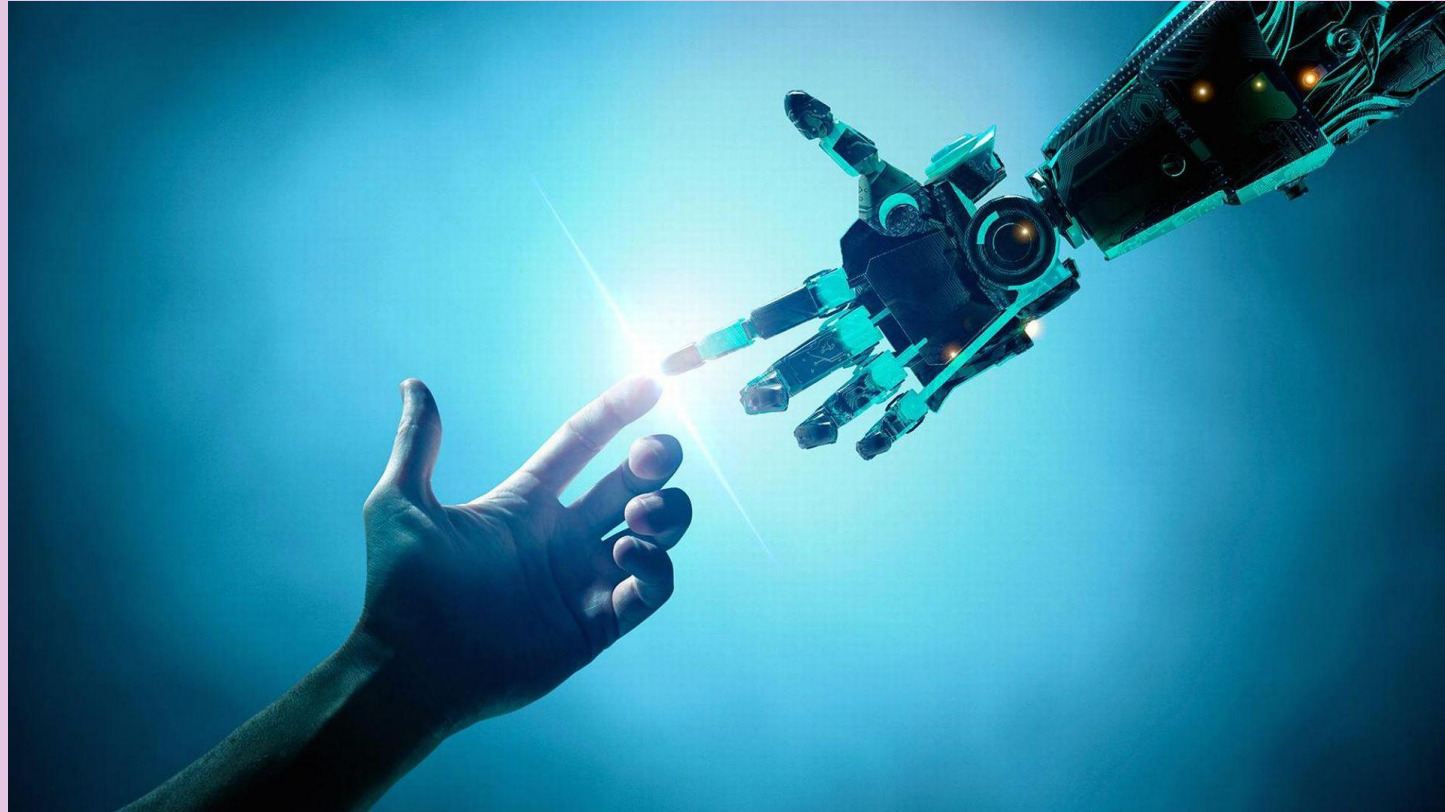
strong

Strong artificial intelligence systems are systems that carry on the tasks considered to be human-like.

- self-driving cars
- in hospital operating rooms



Thank you for your attention!



Bibliography

- AI vs Human Intelligence: Difference Between AI & Human Intelligence
<https://www.upgrad.com/blog/ai-vs-human-intelligence/#:~:text=While%20Human%20Intelligence%20aims%20to,analogous%2C%20but%20machines%20are%20digital.>
- Artificial Intelligence (AI)
<https://www.investopedia.com/terms/a/artificial-intelligence-ai.asp>
- 7 Differences between Artificial Intelligence and Human Intelligence
<https://www.analyticssteps.com/blogs/7-differences-artificial-intelligence-ai-human-intelligence>
- Artificial intelligence vs human intelligence – a competition or collaboration?
<https://www.aurecongroup.com/expertise/digital-engineering-and-advisory/artificial-intelligence-vs-humans>