



Data Base

Basic of Database System

Lab One



Data Base

Database System :

Is tool for gathering and organizing information ,An electronic database is container of objects.

Single database can contain more than one table.



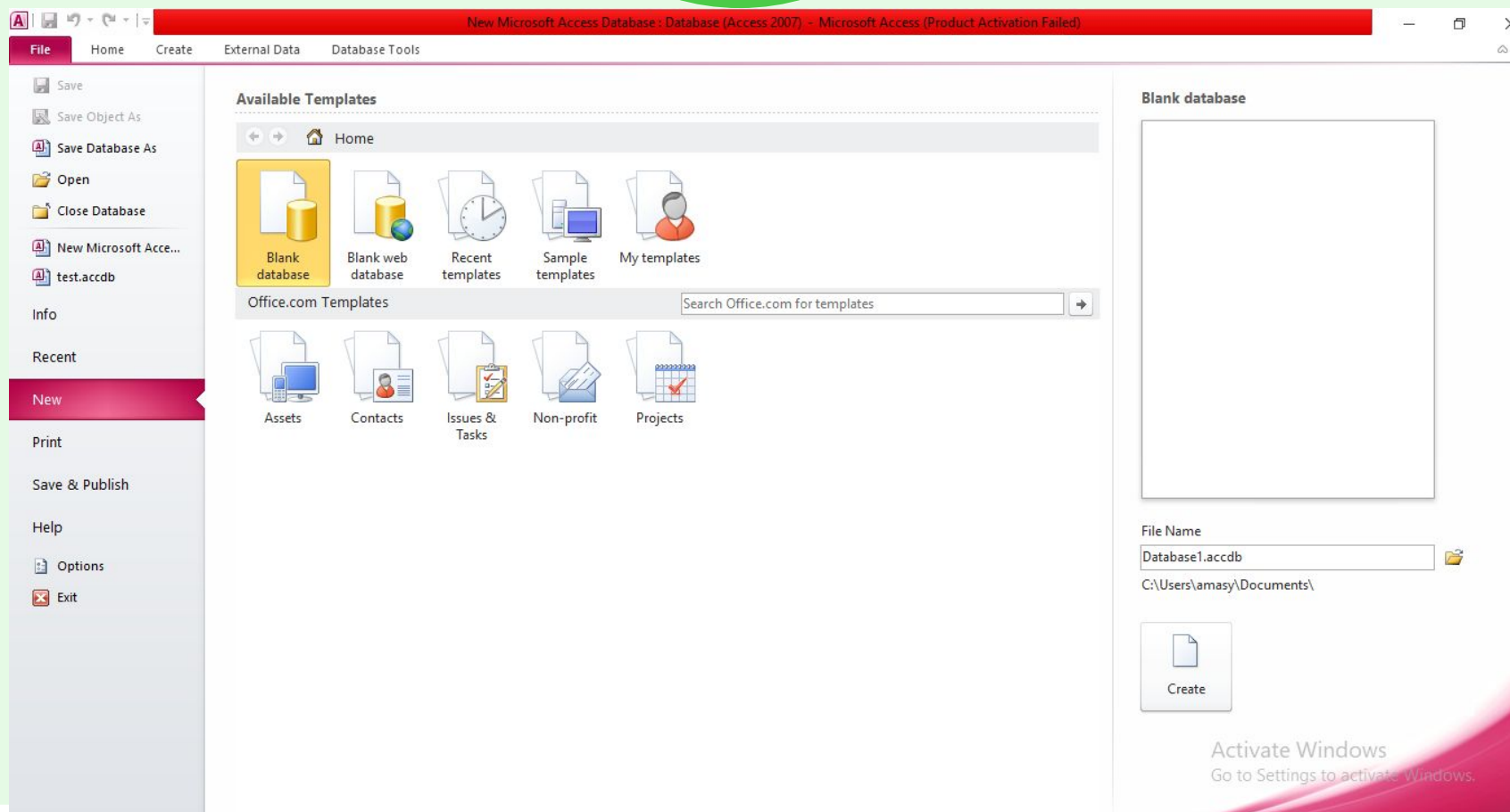
Data Base

MC-Access (Microsoft Access Database):

Is program that database specifically designed to use data or code from another source ,an Access database store its table in a single file.



Data Base





Data Base

With MC-Access can:

- 1-adding new database .*
- 2-Editing data in the database.*
- 3- deletion of information .*
- 4- organize and display data in different ways.*
- 5- sharing data with other through reports, e-mail, messages ,internet ,or other other internet.*



Data Base

Parts an Access database:

1-Tables.

2- Forms.

3-Reports.

4-Inquiries.

5-Mecros.

6-Modules.



Data Base

Tables:

Data is stored in rows and columns.

Each row in the table is referred to as record.

(Records are place where individual pieces of information are stored).

Each columns in the table is referred to as fields.



Data Base

Forms :

User interface in which you can enter or edit data.

Contain commands and buttons and other controls that do variety of tasks form.



Data Base

Reports :

Are what you use to format and summarize data for presentation are generally formatted to be printed.



Data Base

Queries :

Is button image Queries can perform many different function in database .

The most common function is to retrieve specific data from tables.

Fall into:-

1-select query.

2-action queries.



Data Base

1-select query :

Is simply retrieves data and makes it available for use.

2-action queries.

Performs a task using data, can be use to create new tables(add, update , delete data).



Data Base

Macros :

Button image Access macros can be thought of as a simplified programming language that you can use to add functionality to your database.



Data Base

Modules :

Are items, like macros that use to add functionality to your database.

Create macros in access by choosing from list of macro action.

Can be either a class module (class modules are attached to forms or reports.)



Data Base

Class work :
Homework :

