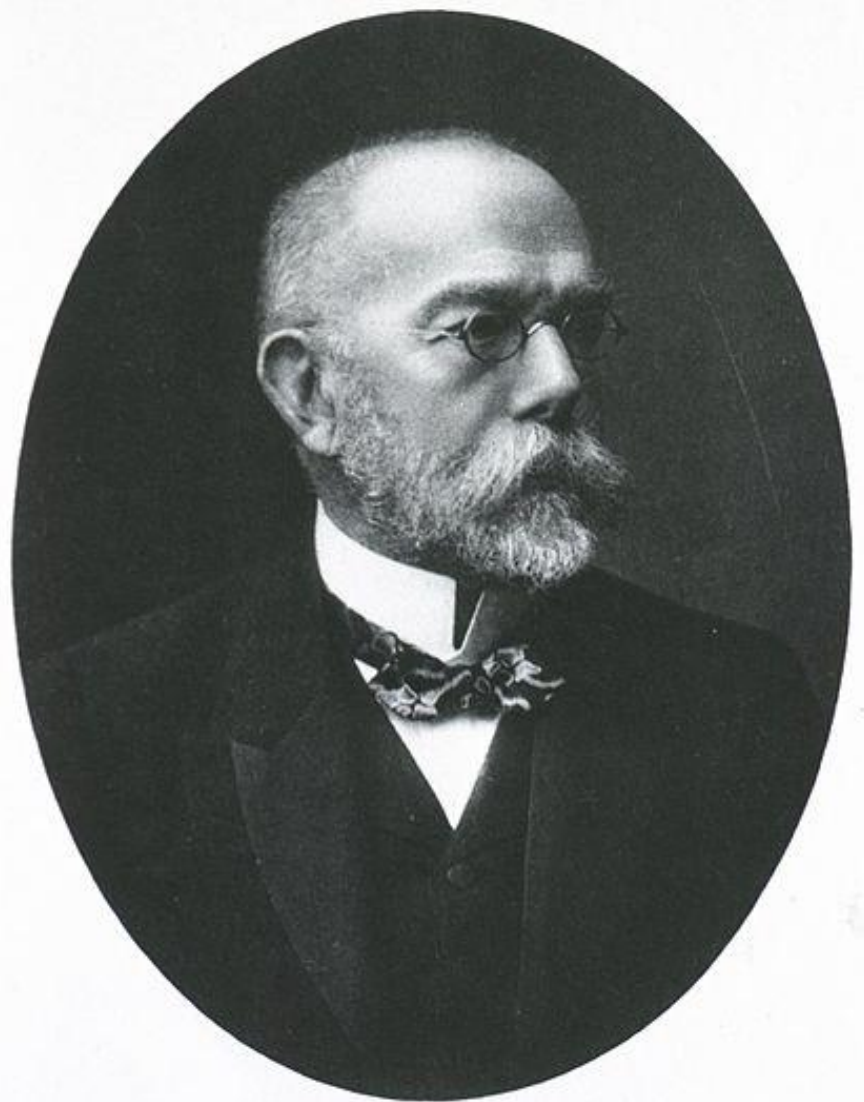
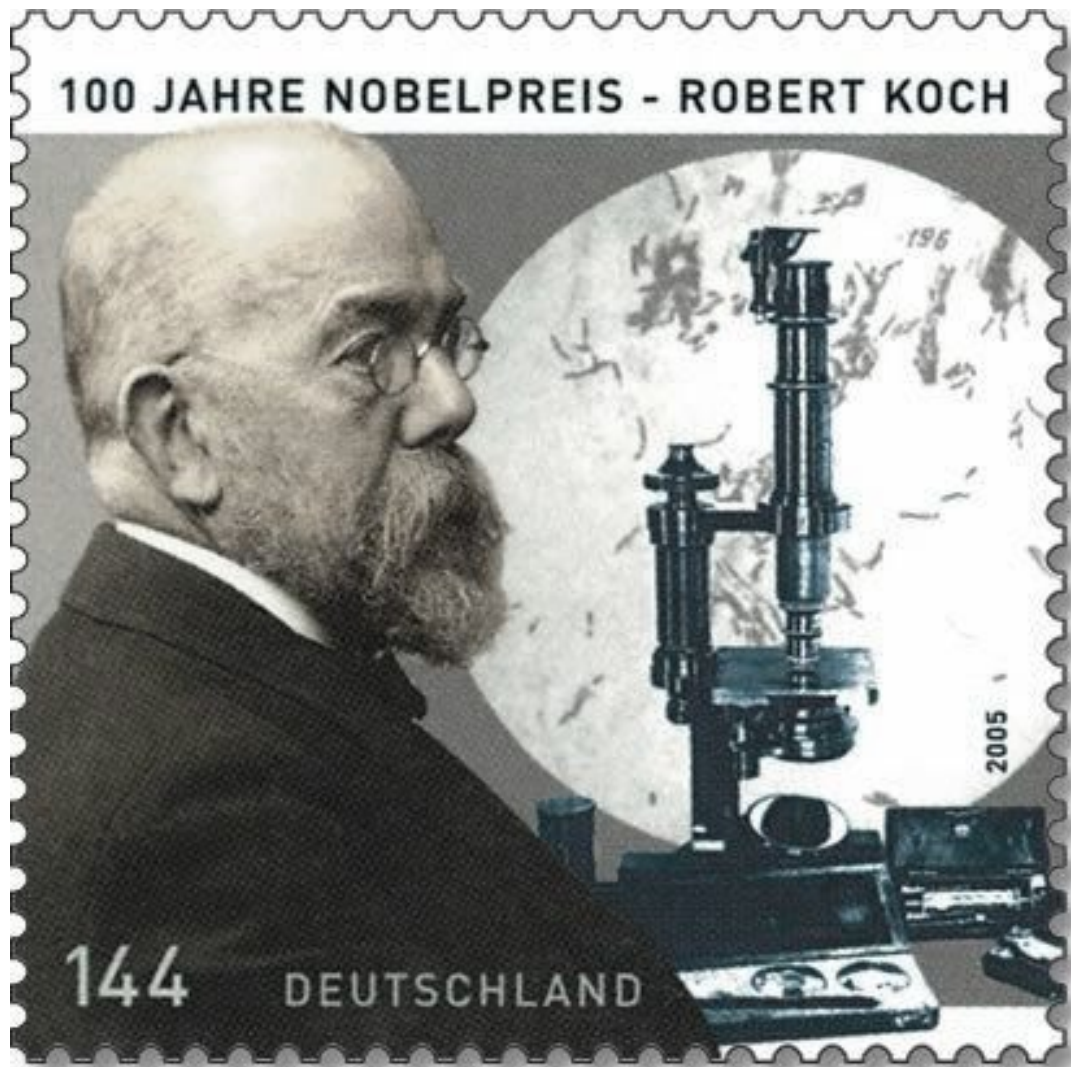


**Robert Koch**



*R. Koch.*

**11 December 1843**  
**27 May 1910**



# Early life and education



**Young Age Photo Of Robert Koch**





# ANTHRAX

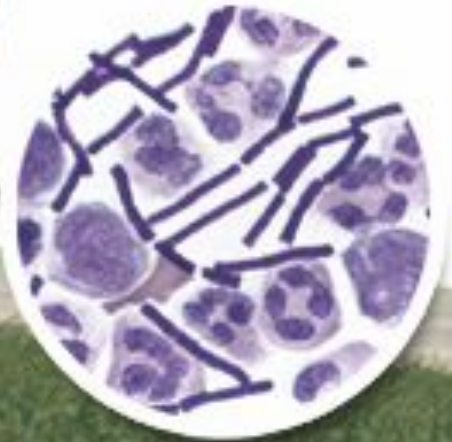
1

The bacteria known as *Bacillus anthracis* produce dormant spores (not active) that can live in the environment, like soil, for a long time, even decades.



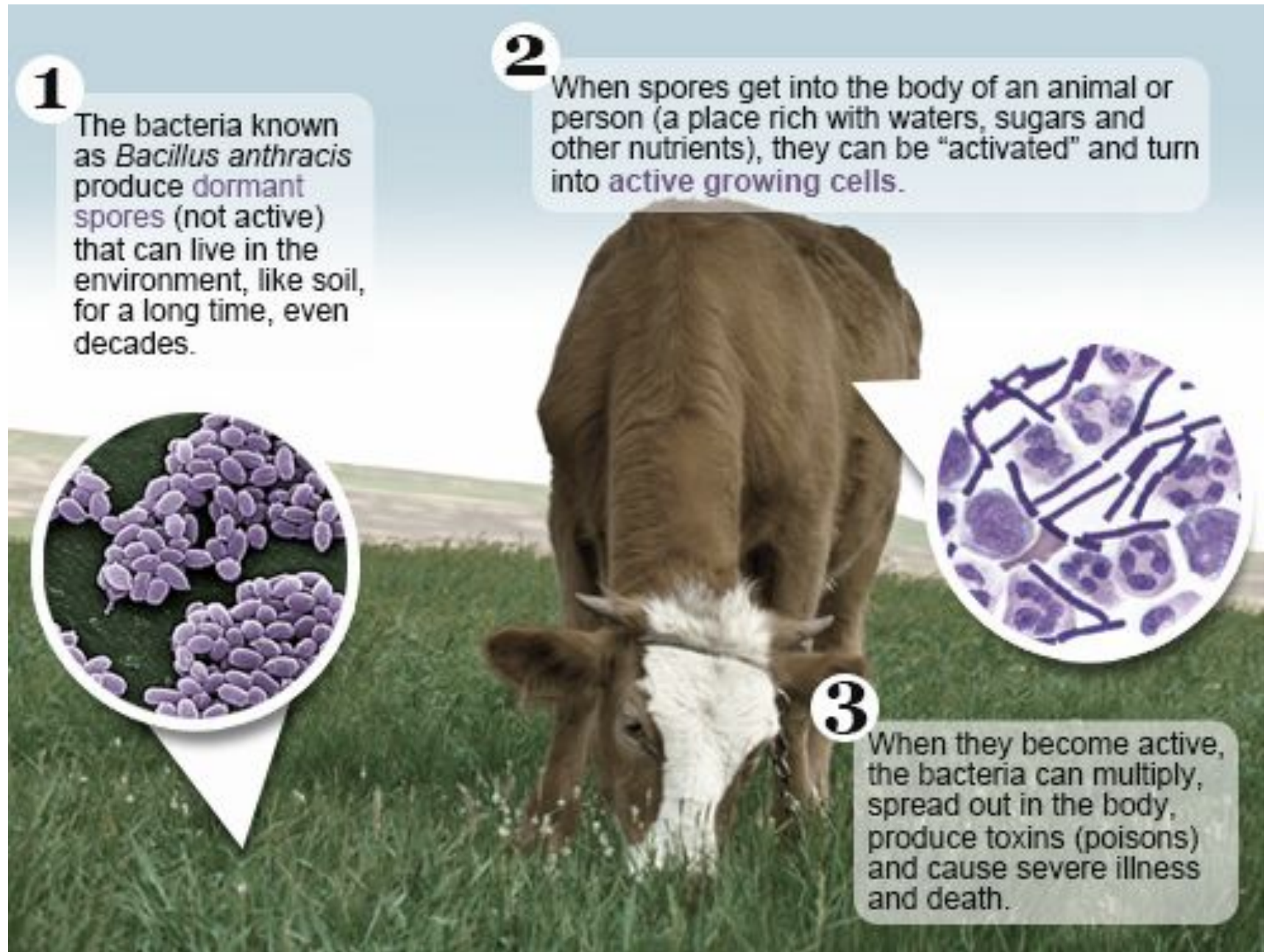
2

When spores get into the body of an animal or person (a place rich with waters, sugars and other nutrients), they can be “activated” and turn into active growing cells.



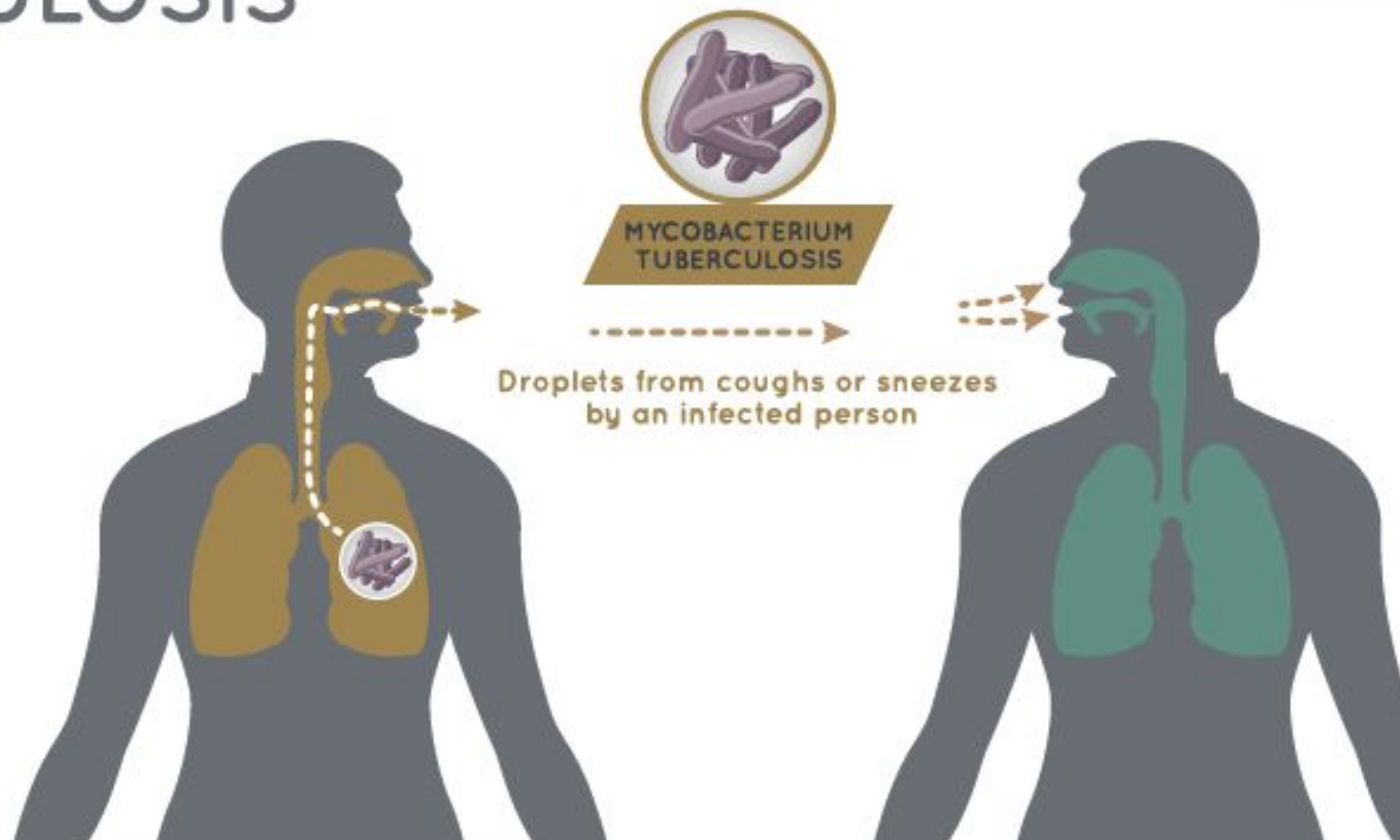
3

When they become active, the bacteria can multiply, spread out in the body, produce toxins (poisons) and cause severe illness and death.



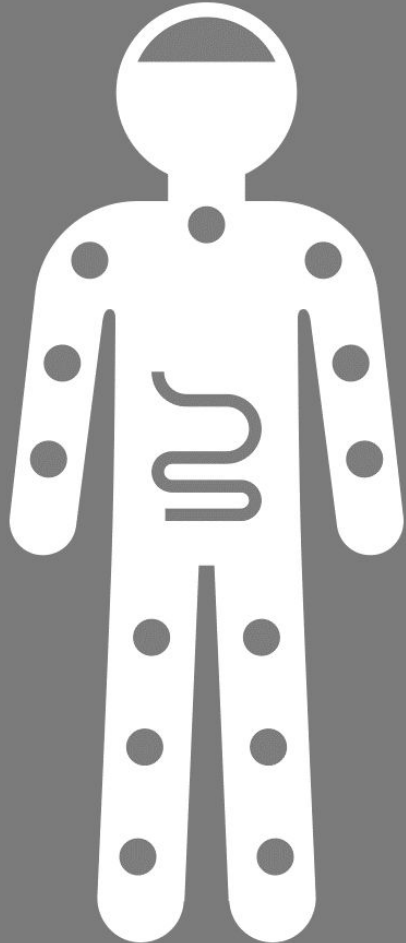


# TUBERCULOSIS



# Cholera

## SYMPTOMS AND TREATMENT



- After an incubation period ranging from a few hours to four days, cholera is mainly characterized by acute watery diarrhea associated with vomiting.
- The severity of the disease is mainly correlated to the risk of severe dehydration, which can lead to death in a few hours.
- Treatment thus relies on a rehydration adapted to the patient's condition.





ROBERT KOCH

14. DEZ. 1843 27. MAI 1910