

БААМ!

around

WITH

from

OUTSIDE

after

DOWN

on

away from

BENEATH

ALONG

beyond

BETWEEN

of

up

until

TO

GAME RULES

BAAM! The GAME SHOW

- 1. Make teams. Decide which team goes first.**
- 2. Appoint a scorekeeper.**
- 3. Teams answer correctly and earn money. If a team is correct, they can continue until max. 3 times or until they get BAAM!**
- 4. If a team hits BAAM! they go bankrupt!**
- 5. The team with the most money at the end is the winner.**
- 6. Penalties cost a team \$10 , \$25 and \$50 dollars!**

X	X	X	X	X
X	X	X	X	X
X	X	X	X	X
X	X	X	X	X
X	X	X	X	X



The owl is on the book.

\$100





The frog is on the box.

\$ 100





**The dog is under the
table.**

\$ 100





BAM!



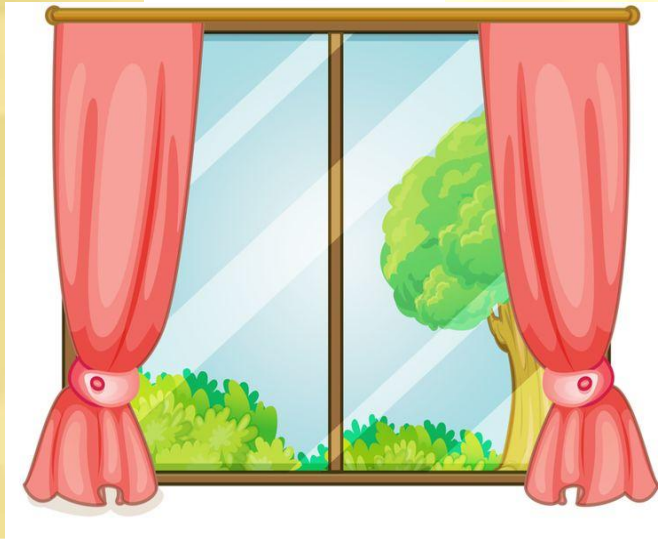


**The clock is
below the
window**



\$ 150





**The clock
is above
the
window.**

\$150

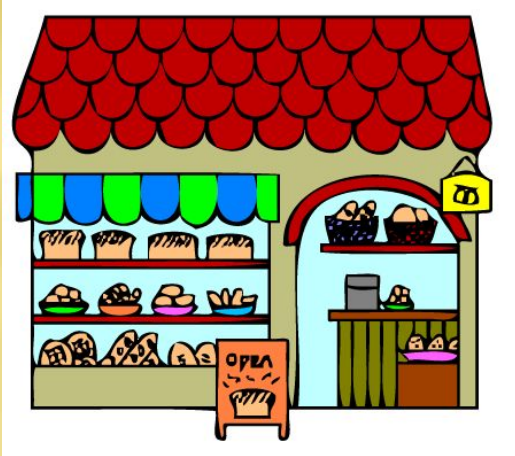




BAM!



The shop is opposite the bank



\$ 200



The children are on the hill.



\$ 500

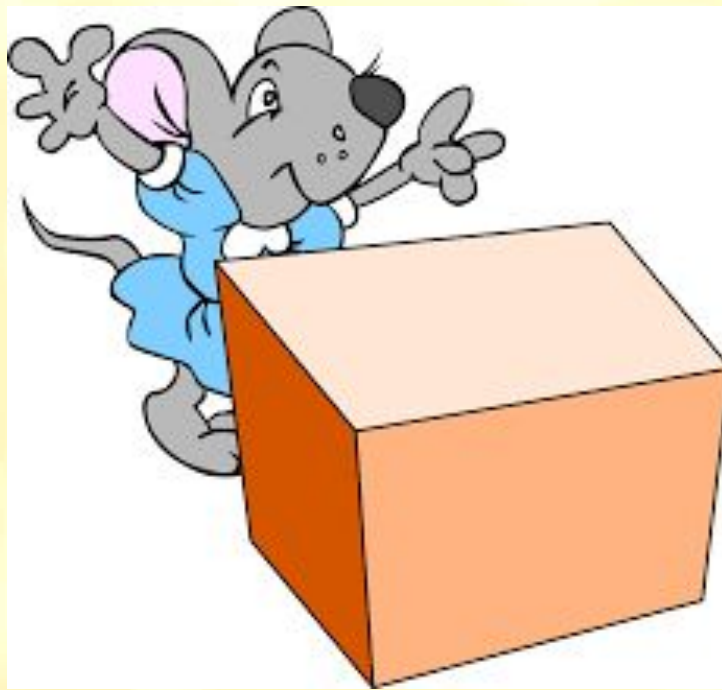


**The cat is between the
dog and the rabbit**



\$ 250





**The mouse is behind
the box**

\$ 100



**The mouse is in front
of the box.**

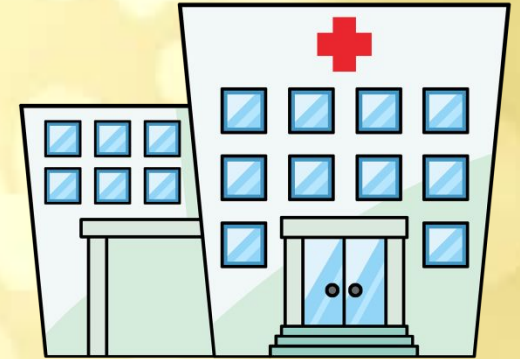


\$ 100





The sports center is between the tower and hospital



\$ 250



The café is next to the bus station



\$ 100



The children are in the library



\$ 50



**The supermarket is near
the bank.**



50m



\$ 1000

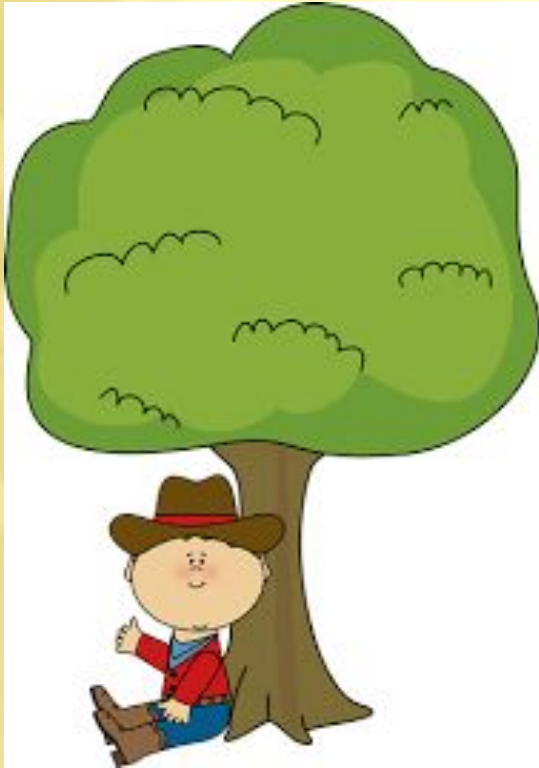




BAM!



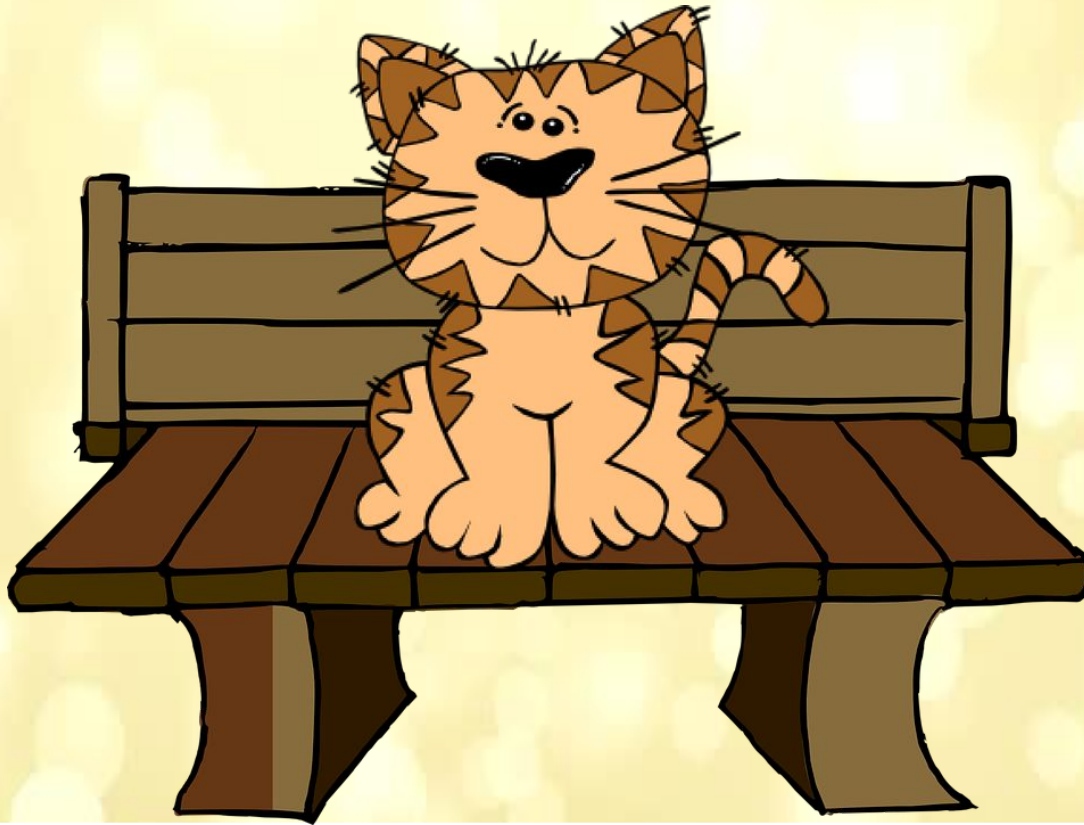
The boy is under the tree.



\$ 200



The cat is on the bench



\$ 150



**The school is opposite
the park.**



\$ 50





**The
picture is
above
the sofa**



\$ 500





**The café is
above the
supermark
et**

\$ 200





**The
supermarke
t is below
the cafe**

\$ 50





The school bus is in front of the Museum



\$ 150





**The girl
is behind
the
books**

\$ 100





BAM!



Sports centre is near the bus station



100 m

\$ 100

