

# ANIMALS



Mammals

5

10

15

20

25

Amphibians

5

10

15

20

25

Reptiles

5

10

15

20

25

Fish

5

10

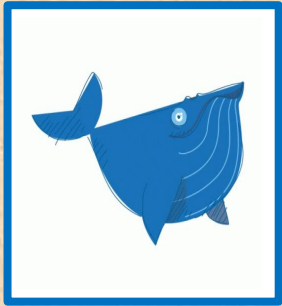
15

20

25

Exit

What is the largest animal in the world?



The blue whale is the largest animal in the world. It grows over 100 feet long. Its tongue is as heavy as an elephant and its heart is as big as a small automobile

Answer

Back

What colour is the polar bear's skin?



The polar bear's skin is actually black. It seems white because of its thick white fur.

Answer

Back

What is the fastest land animal in the world?



The cheetah is the fastest land animal in the world. It can run 100 km an hour.

Answer

Back

There are only two mammals that lay eggs.  
Do you know them?



They are the platypus and the  
spiny anteater.

Answer

Back

Why is it difficult for lions and other predators to catch a zebra?



As lions and other predators are colourblind they have trouble seeing zebras standing in tall grassy areas. And the stripes make it difficult for a predator to pick out one zebra from another.

Answer

Back

Name three animals that are amphibians.



Frogs, toads, and salamanders are amphibians.






Why don't frogs live in the oceans?



Frogs cannot live in salt water.  
They live in lakes and ponds.



What do frogs lose when they become adult?

When tadpoles grow into adult frogs, they lose their tail and  They no longer breathe underwater. They grow lungs and breathe air.



Why don't frogs drink water?

Frogs don't need to drink water. They can absorb it through their skin.



What do salamanders do when they are in danger?



When a salamander is in danger it sacrifices its tail. While the tail is wriggling, the salamander escapes.



What is the heaviest species of snake in the world?



The heaviest type of snake in the world is the green anaconda. It can grow to over 300 pounds!

Answer

Back

Name all of the continents that turtles don't live on.



Turtles live on every continent, except Antarctica.



What is the largest species of lizard on Earth?



The Komodo dragon is the largest species of lizard on Earth. It has been known to eat birds, monkeys, goats, deer, and even horses!

Answer

Back

What do snakes use their tongues for?



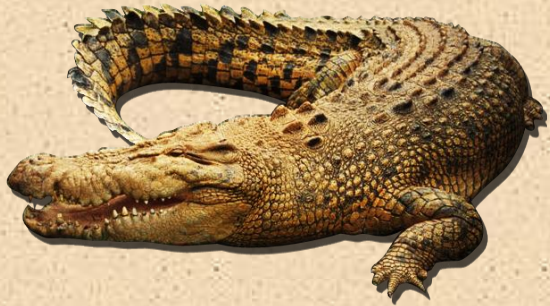
Snakes use their tongues to smell the environment.

Answer

Back



How many teeth does an alligator have?



Alligators have about 80 teeth.

Answer

Back

What is the largest fish in the world today?



The largest fish is **the whale shark**. It can grow up to 50 feet (15 meters) long.



What fish looks like a snake and can make electricity?



An **electric eel** is a type of fish that looks like a snake. It can make electricity to shock and kill other sea creatures.

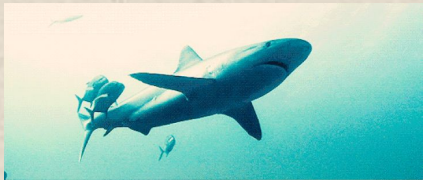
Answer

Back

Do you know two fish that do not hatch from eggs?



**Guppies** and some types of **sharks** do not hatch from eggs - they are born alive.



Answer

Back

This species of fish is called a climbing perch.  
Why?



This fish is called **a climbing perch** because it can walk across land and even climb trees! It can live out of water for hours!



Can you name three animals that have "fish" in their name? They are not real fish.



**Jellyfish, starfish** and **crayfish** are not real fish at all! Unlike real fish, they don't have a backbone, gills and fins.

Answer

Back