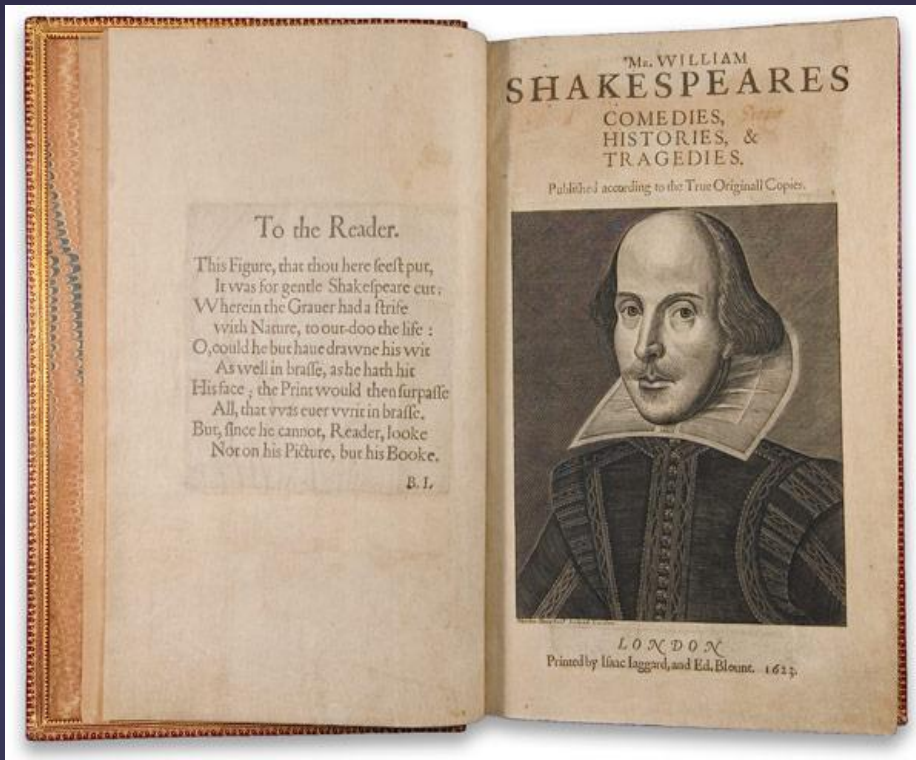


William Shakespeare (1564 – 1616)





MR. WILLIAM
SHAKESPEARES
COMEDIES,
HISTORIES, &
TRAGEDIES.

Published according to the True Originall Copies.



LONDON
Printed by Iaac Iaggard, and Ed. Blount. 1623.

To the Reader.

This Figure, that thou here seest put,
It was for gentle Shakespeare cut:
Wherein the Grauer had a strife
with Nature, to out-doo the life:
O, could he but haue dravne his wit
As well in brasse, as he hath hit
His face; the Printer would then surpasse
All, that was euer writ in brasse.
But, since he cannot, Reader, looke
Not on his Picture, but his Booke.

B. I.

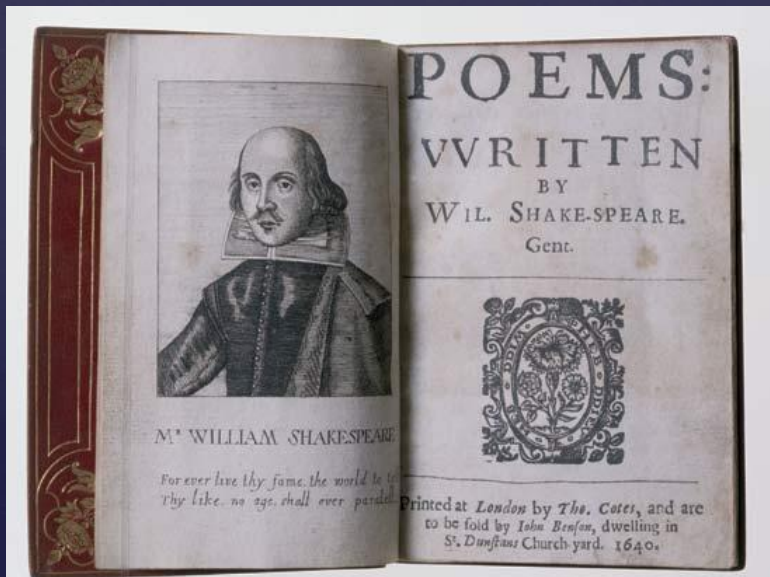
Shakespeare's Literary Work.

Poet and playwright
William Shakespeare
was one of the greatest
titans of Renaissance.

He wrote 37 plays, 154
sonnets and 2

narrative poems.

Shakespeare's plays
belong to different
dramatic genres.



POEMS:
VVITTEN
BY
WIL. SHAKESPEARE.
Gent.



M^r WILLIAM SHAKESPEARE

For ever live thy fame, the world be true
Thy like no age shall ever parture

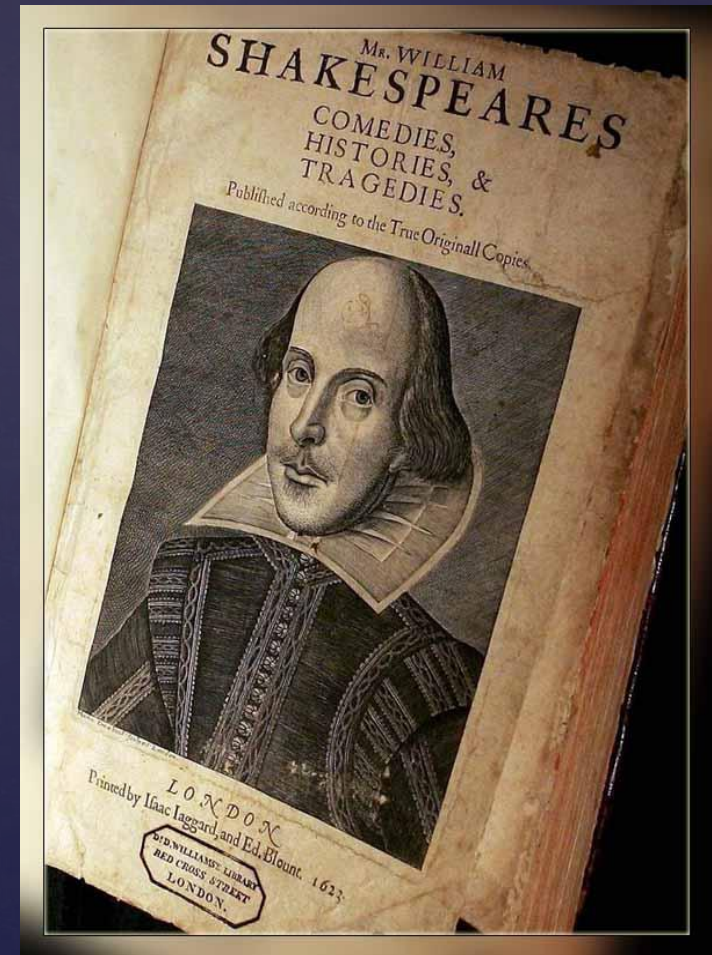


Printed at London by Tho. Cotes, and are
to be sold by Iohn Benson, dwelling in
St. Dunstons Church-yard. 1640.

Shakespeare's literary work is divided into three periods:

- The first period –from 1590 to 1601- when he wrote histories, comedies and sonnets.
- The second period – from 1601 to 1608- was the period of tragedies.
- The third period – from 1608 to 1612- when he wrote mostly tragi-comedies.

These three periods are sometimes called optimistic, pessimistic and romantic.



The first period

Comedies:

- *Love's Labour's Lost*
- *The Comedy of Errors*
- *The Two Gentlemen of Verona*
- *A Midsummer Night's Dream*
- *The Merchant of the Shrew*
- *Much Ado About Nothing*
- *The merry Wives of Windsor*
- *As You Like It*
- *Twelfth Night*



SHAKESPEARE'S
COMEDIES

Kiernan Ryan



William
SHAKESPEARE

'After God, Shakespeare has created most'
ALEXANDRE DUMAS

The Comedy of Errors



ROBSON & CRANE
IN



Shakespeare's
"COMEDY OF ERRORS"

Shakespeare's
Comedies



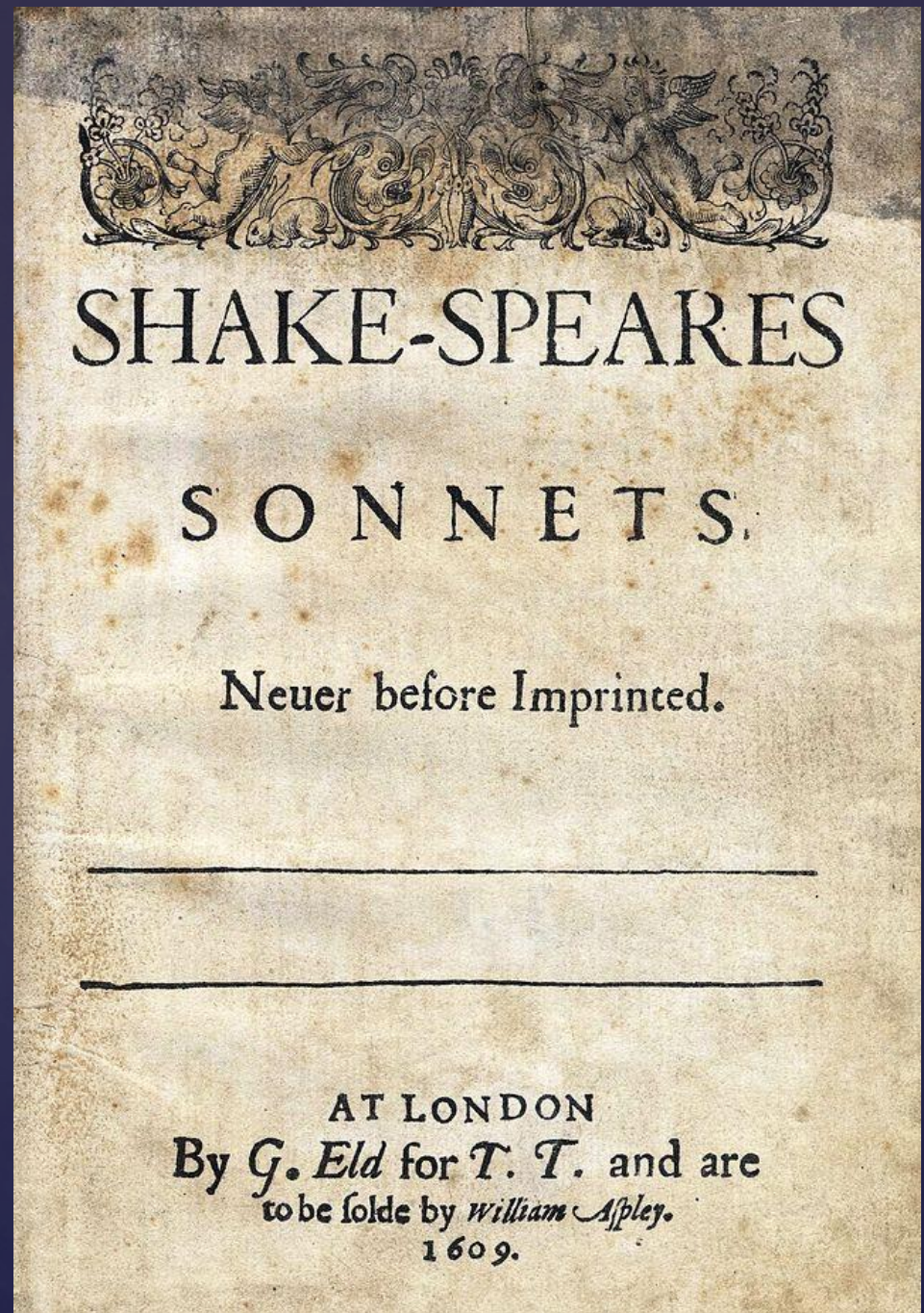
FOUR COMEDIES
SHAKESPEARE

*The Taming of the Shrew • A Midsummer Night's Dream
The Merchant of Venice • Twelfth Night*



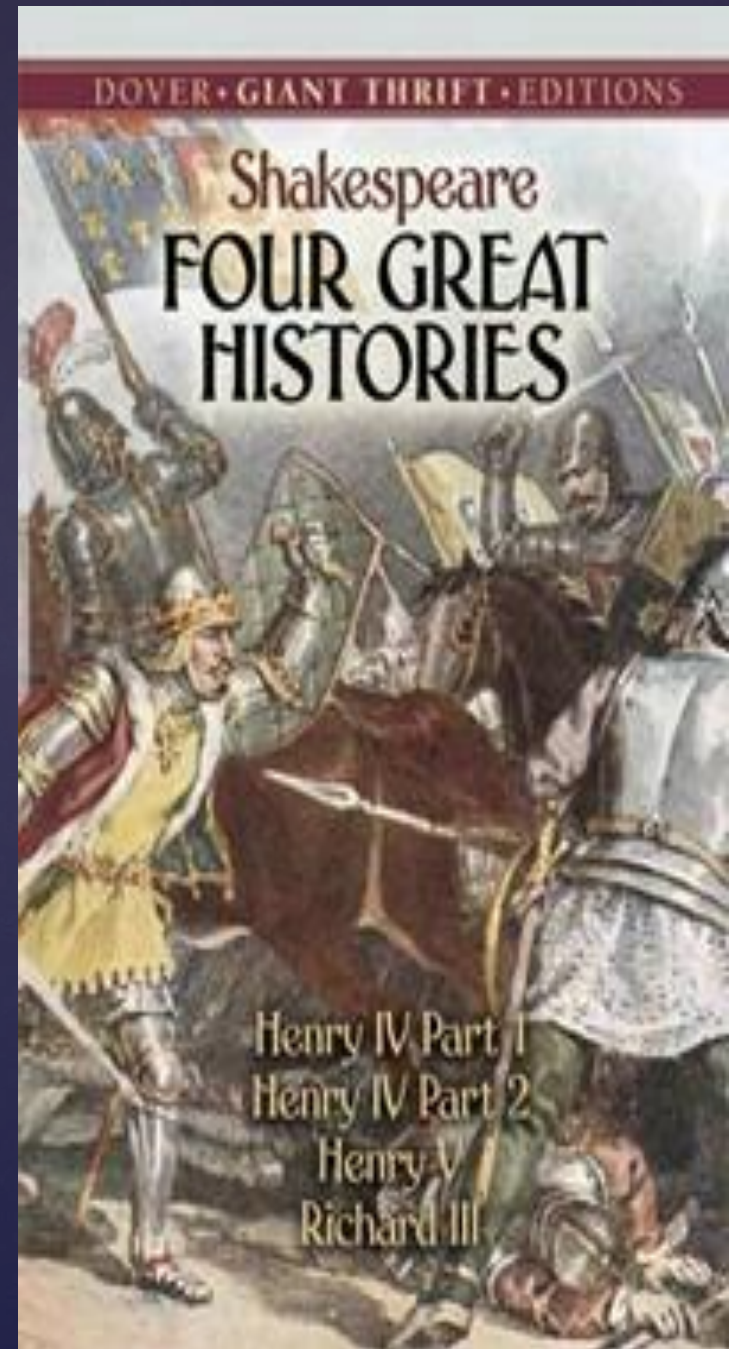
Sonnets:

- Sonnets 10
- Sonnets 66
- Sonnets 91
- Sonnets 130
- Sonnets 154

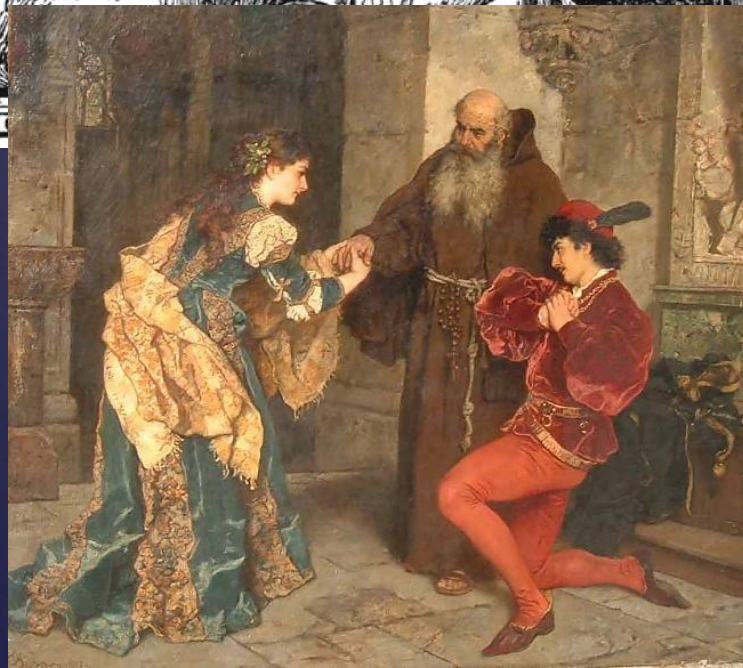
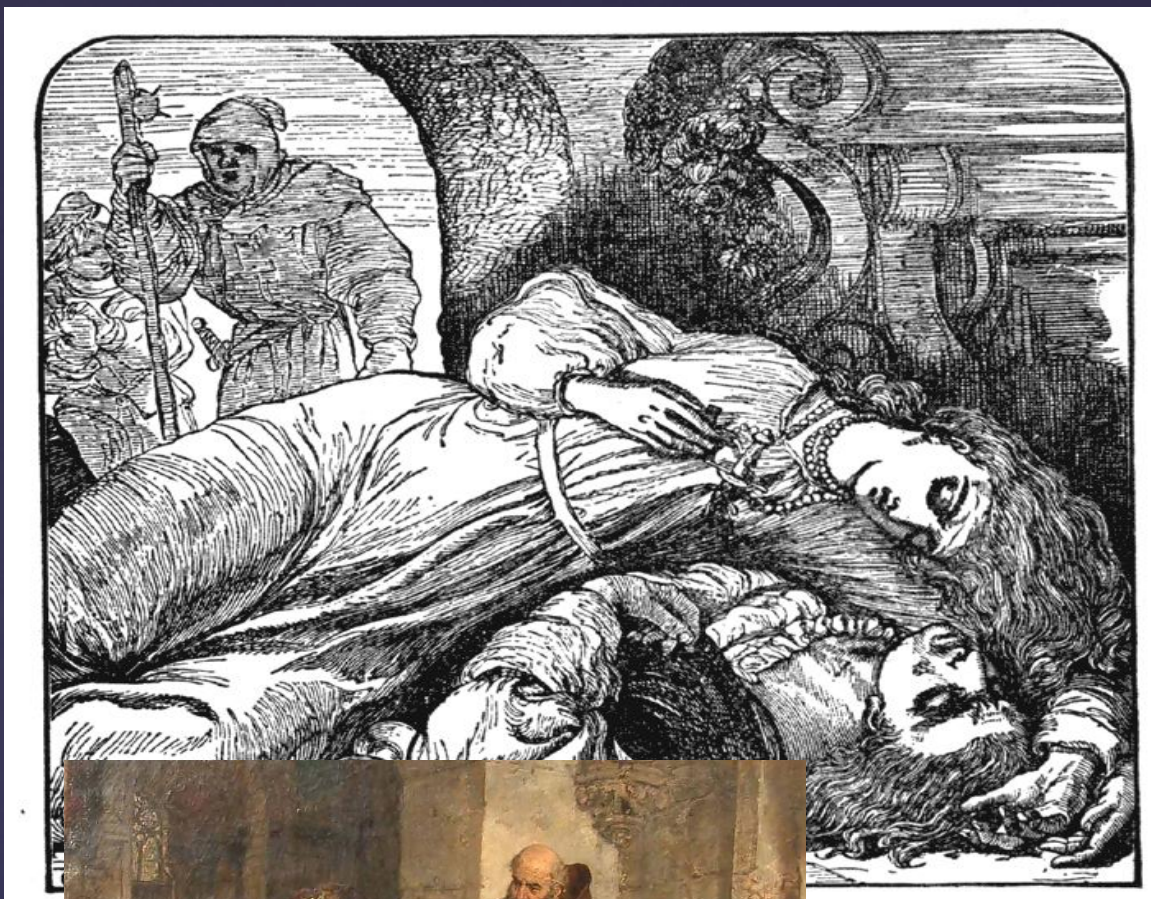
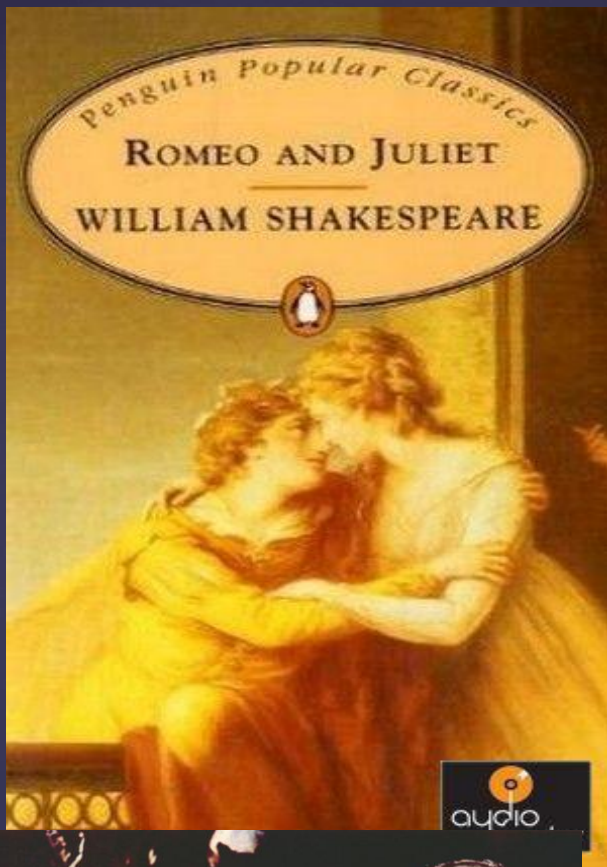


Histories:

- King Henry VI
- The Tragedy of King Richard III
- Titus Andronicus
- The Tragedy of King Richard II
- The Life and Death of King John
- King Henry IV
- The Life of King Henry V
- Romeo and Juliet
- Julius Caesar



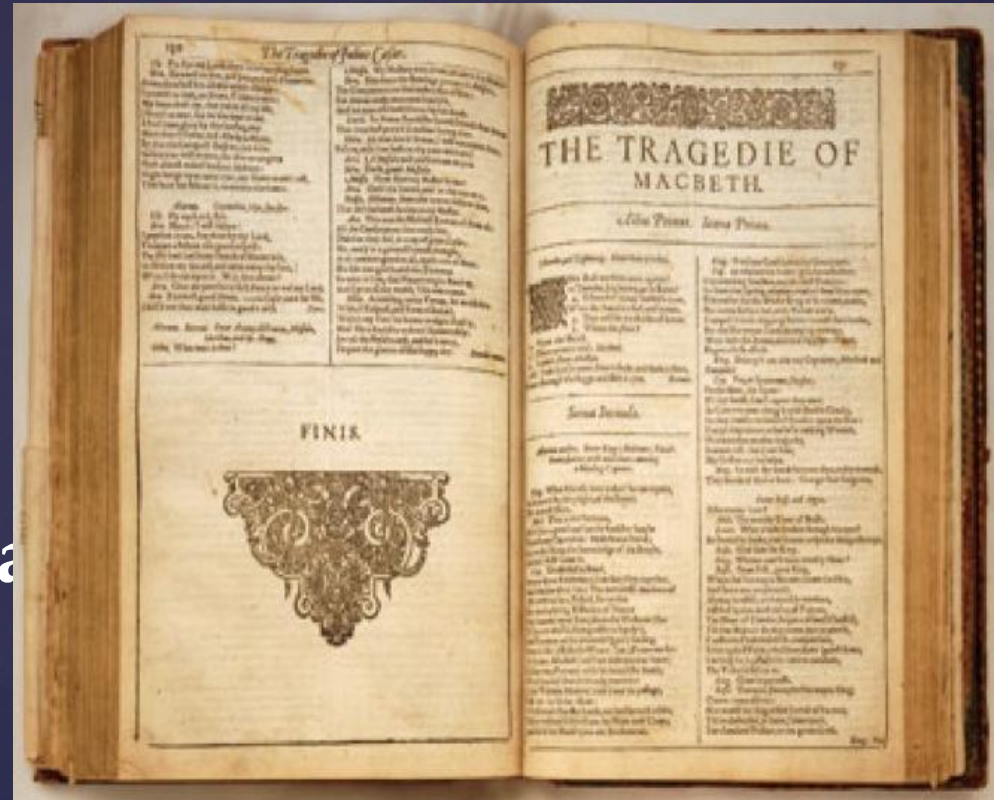




period

Tragedies

- Hamlet
- Othello
- King Lear
- Macbeth
- Antony and Cleopatra
- Coriolanus



William Shakespeare
HAMLET



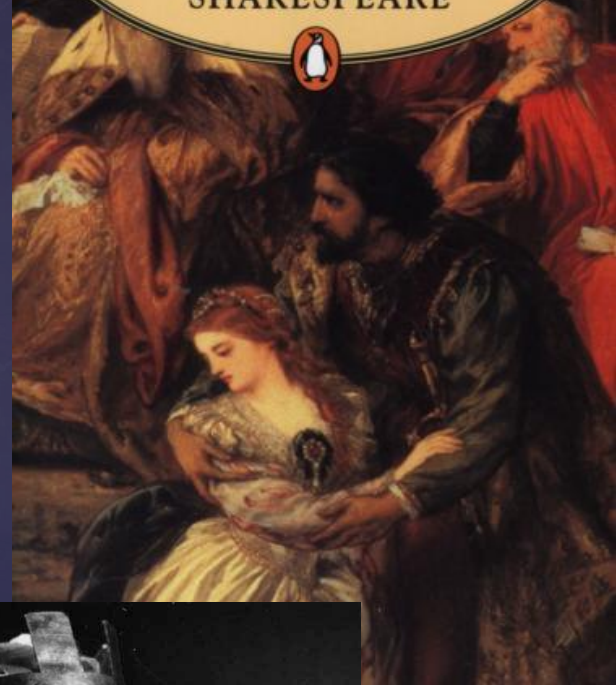
DOVER · THRIFT · EDITIONS

WILLIAM SHAKESPEARE
OTHELLO



Penguin Popular Classics

KING LEAR
—
WILLIAM SHAKESPEARE



THE STRATFORD CHILDREN'S SHAKESPEARE FESTIVAL

The Tragedie of
HAMLET,
Prince of Denmark



by WILLIAM SHAKESPEARE



The third period

Tragi –comedies:

- ▣ Cymbeline
- ▣ *The Winter 's Tale*
- ▣ *The Tempest*
- ▣ *Henry VIII*

