

# BELLMONA

Product Line

BELLMONA



# Bio Signal Basic Line

Bio peptide, E.G.F and Centella Asiatica help keep your skin tight and smooth. It penetrates deep into the skin and improve skin elasticity.



Relieve skin stress, Skin barrier management



Skin barrier management, Preventing skin damage



Improving skin's elasticity, glossy skin

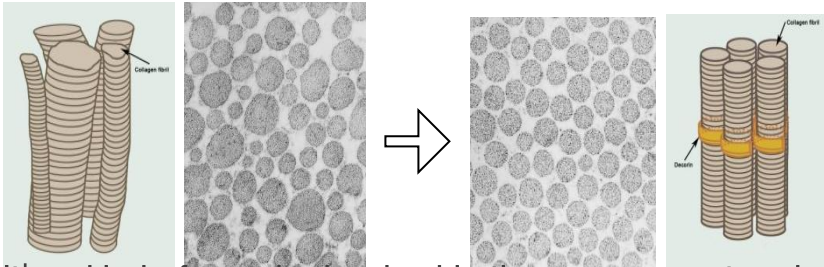


Relieve skin stress, Skin improvement

## Nanotechnology TDS (Transdermal Delivery System)

Nano is a word derived from Greek, means micro-unit that represents 1 out of 1 billion.

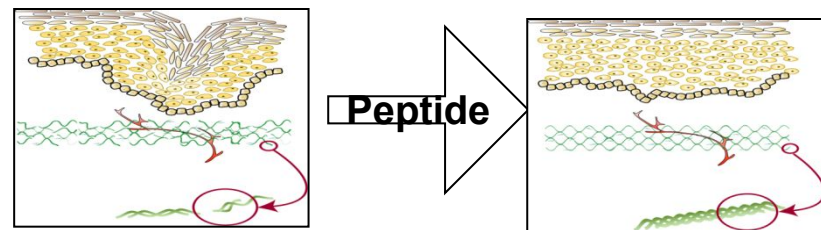
### Vitalize Decorin



It's a kind of protein, involved in the arrangement and quality improvement of collagen.

By promoting the production of decorin, it helps to boost the vitality of collagen and provides a tighter arrangement of collagen.

### Recovery Collagen



Before

After

Collagen is a type of long, thin protein that is made within a cell, which activates the proliferation and function of cells, improving skin's elasticity.

# Bio Signal Basic Line

Bio peptide, E.G.F and Centella Asiatica help keep your skin tight and smooth.  
It penetrates deep into the skin and improve skin elasticity.

## Bio Signal Skin / 750ml

An Essence type skin with high moisture content extracted from the viscosity of the Natto.  
Suitable for all skin type and help moisturize, calming the skin.

### Main Ingredients

- Soybean phytoplacenta : Help improve elasticity and purify complexion
- Hyaluronic acid : Strengthen skin's moisture barrier
- Honey extract : Effectively removes debris and dirt

### How to use

- Put a proper amount of skin on a cotton pad and gently wipe entire face.

## Bio Signal Cleansing Lotion / 750ml

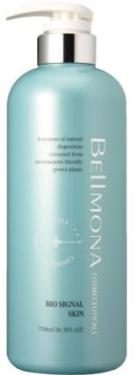
A milk-type cleansing lotion that gently remove the make-up while keeping skin hydrated.  
This Cleansing lotion is perfect for all skin types including sensitive.

### Main Ingredients

- Hyaluronic acid : Strengthen skin's moisture barrier
- Mineral oil : Hydrates and soothes skin

### How to use

- Put a proper amount Gently cleanse with upward and outward movements.



# Bio Signal Basic Line

## Double Peeling Gel / 250ml

Cellulose and Papaya Extracts will clean and exfoliate your skin, reduce skin irritation and also have a calming effect.

### Main Ingredients

- Carica Papaya Fruit Extract : Gently exfoliates skin and purifies it
- Portulaca Oleracea Extract : Soothes and hydrates skin
- Allantoin : Relieve skin stress, Skin improvement

### How to use

- Put a proper amount and remove wipe it after 1-2 minutes.



## Bio Signal Massage Cream / 1000ml

The ratio of nutritional cream to massage cream is 3:7, this massage cream helps to boost elasticity of the skin and keep skin supple.

### Main Ingredients

- Aloe Barbadensis Leaf Extract : Soothes and hydrates skin
- Allantoin : Relieve skin stress, Skin improvement
- Scutellaria baicalensis root extract : Soothe and calm redness

### How to use

- Put a proper amount and massage for 5-15 minutes.



# Bio Signal Basic Line

## Whitening Cover Balm SPF35++ / 50ml

This BB cream soothes sensitive skin and even protects against UV and pollution.

### Main Ingredients

- Green tea extract : Skin Improvement, Skin moisturizing
- Portulaca extract : Hydrates and soothes skin
- Aloe Barbadensis Leaf Extract : Soothes and hydrates skin

### How to use

- Put a proper amount of cream and spread it entire face.



## Dual Sunblock Soft SPF50+++ / 60ml

Abundant moisture keeps skin refreshed all day long with a refreshing finish without any sticky feel and provides strong protection against UV.

### Main Ingredients

- Pomegranate Extract : Improving skin's elasticity, glossy skin
- Centella Asiatica : Skin barrier management, Preventing skin damage

### How to use

- Put a proper amount of cream and spread it to face, neck or body.



# Bio Signal Basic Line

## Bubble Tok Cleanser / 120ml

An Oxygen bubble removes impurities with a soft and dense lather for a fresh and clear skin.

### Main Ingredients

- Milk Protein Extract : Balances oil and moisture levels in and outside the skin to reduce skin irritations caused by inner-skin dryness.
- Trehalose : Build up a strong moisture barrier.
- Acerola extract : Make skin vibrant and revitalized.

### How to use

- Apply when your face and hands are dry, to remove make up by rubbing thoroughly and wash off with lukewarm water.



## Grape Fruit Foam / 500ml

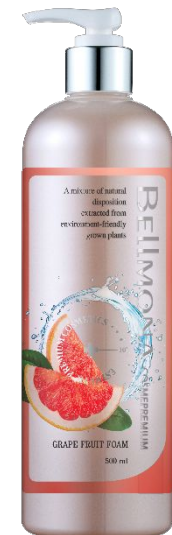
A Gel-type foam cleansing with Grapefruit extract to help exfoliate clean impurities and thoroughly cleanses your skin while keeping it moisturized.

### Main Ingredients

- Allantoin : Relieve skin stress, Skin improvement
- Citric Acid : Effective in exfoliating dead skin cells

### How to use

- Massage your face with the smooth lather, and rinse thoroughly with lukewarm water.



# Bio Signal Basic Line

## Bio Signal Eye Cream / 40ml

Bio signal eye cream offers a complete anti-aging care for improvements in look of wrinkles, resilience, and dryness around the eyes.

### Main Ingredients

- Centella Asiatica : Skin barrier management, Preventing skin damage
- Shea butter : Skin moisturizing, Nourishing skin
- Adenosin : Anti-aging effect
- E.G.F. : Relieve skin stress, Skin barrier management

### How to use

- After using oil serum, gently pat an appropriate amount around the eyes.





# Bio Signal Basic Line

## Multi Hydro Wine Gel / 500ml

This nutritious gel quickly absorbed into the skin in order to moisturize it while at the same time, energize the skin to keep it well-moisturized.

### Main Ingredients

- Red wine extract : Antioxidant effect
- Allantoin : Relieve skin stress, Skin improvement
- Multi Berry Extract (Acerola, Acai Berry, Blueberry, Grapeseed), Vitamin C, Anthocyanin  
Skin moisturizing, Nourishing skin, Antioxidant effect

### How to use

1. Use it as an essence.
2. Can apply it as a massage gel.
3. Leave on for 10–15 minutes, then rinse off with water.



# Bio Signal Basic Line

## Masic Clean Lip & Eye Remover / 500ml

Oil-free and fragrance-free, clean sensitive areas such as eyes and mouth without irritation. and also can remove water-proof make-up.

### Main Ingredients

- Betaine : Improving skin's elasticity,
- Green tea extract : Helps moisturize and soften skin.
- Allantoin : Relieve skin stress, Skin improvement

### How to use

- Saturate cotton pad and press down on closed eye lids or lips for a few seconds to dissolve makeup before sweeping the area clean.



## C.C cream / 50ml

This CC cream naturally covers the pores and brighten the skin tone without darkening.

### Main Ingredients

- Adenosin : Anti-aging effect
- Niacinamide : Helpful in lightening dark spots
- Sodium Hyaluronate : Help skin stay hydrated and retain moisture.
- Hydrolyzed Collagen : Give elasticity, Improving skin texture

### How to use

- Apply an appropriate amount and evenly smooth over face. Gently pat to finish.



# Bio Signal Revital Line

## Bio Signal Essence / 250ml

This essence is to keep the skin moist and tighten up the skin, also reduce skin irritation.

### Main Ingredients

- Betaine : Improving skin's elasticity,
- Peptide : Hydrates and soothes skin
- E.G.F : Firms and brightens skin.

### How to use

- Apply over face and neck after skin, then gently pat for better absorption.



## Bio Signal Nutrition Cream / 240ml

The natural moisturizing factors extracted from sunflower seeds provides moisture to the skin and keep skin supple.

### Main Ingredients

- Shea butter : Skin moisturizing, Nourishing skin
- Ceramide 3 : Hydrates and soothes skin
- Peptide : Soothes skin
- E.G.F. : Relieve skin stress, Skin barrier management

### How to use

- Apply over face and neck after essence, then gently pat for better absorption.



# Bio Signal Revital Line

## Bio Signal Mask / 240ml

This mask provide nourishment to the skin, tightens pores and boost skin firmness around them.

### Main Ingredients

- Ponciri Fructus Immaturus : Help moisturize dry skin
- Betaine : Improving skin's elasticity,
- Hedera Helix Extract : Preventing skin damage
- Kaolin : Tightens pores and boost skin firmness around them

### How to use

- After cleansing, apply Bio signal mask over your face, leave on for 10–15 minutes, then rinse off with water.



# Intensive Moisture Line

The key technology applied to the BIO SIGNAL line.  
It works to resolve the problem of a lack of moisture in the skin by providing moisture energy.

## Fluid Serum / 250ml

An Emulsion-type serum provides a good amount of moisture, keeping a healthy balance of oil and moisture in the skin.

### Main Ingredients

- Shea butter : Skin moisturizing, Nourishing skin
- Trehalose : Skin barrier management, Skin moisturizing

### How to use

- Apply over face and neck after skin, then gently pat for better absorption.



## Moisture Balm / 240ml

This moisture balm contain squalane oil that absorbs quickly into the skin while delivering the nutrition and energy needed for moist and firm skin.

### Main Ingredients

- Betaine : Improving skin's elasticity
- Squalane : Help cleanse pores

### How to use

- Apply over face and neck after serum, then gently pat for better absorption.



# Intensive Moisture Line

## Repairing Cream / 50ml

A repairing cream that help strengthens skin barrier, keep skin soft and supple.

### Main Ingredients

- Tocopherol : Antioxidant, Skin Improvement
- Meadowfoam Seed Oil : Skin moisturizing
- Natto gum : Skin moisturizing
- Haluronic acid : Build up a strong moisture barrier

### How to use

- Apply over face and neck after serum, then gently pat for better absorption.



## Skin Repairing Mask / 250ml

A cream-type mask that helps strengthens skin barrier and provide nourishment to the skin.

### Main Ingredients

- Tocopherol : Antioxidant, Skin Improvement
- Natto gum : Hydrates and soothes skin

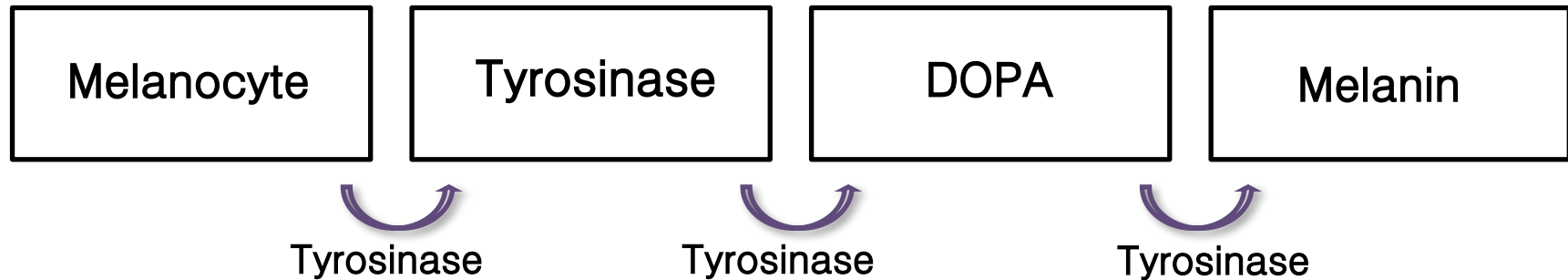
### How to use

- Apply over face and neck after ampoule, then gently pat for better absorption.



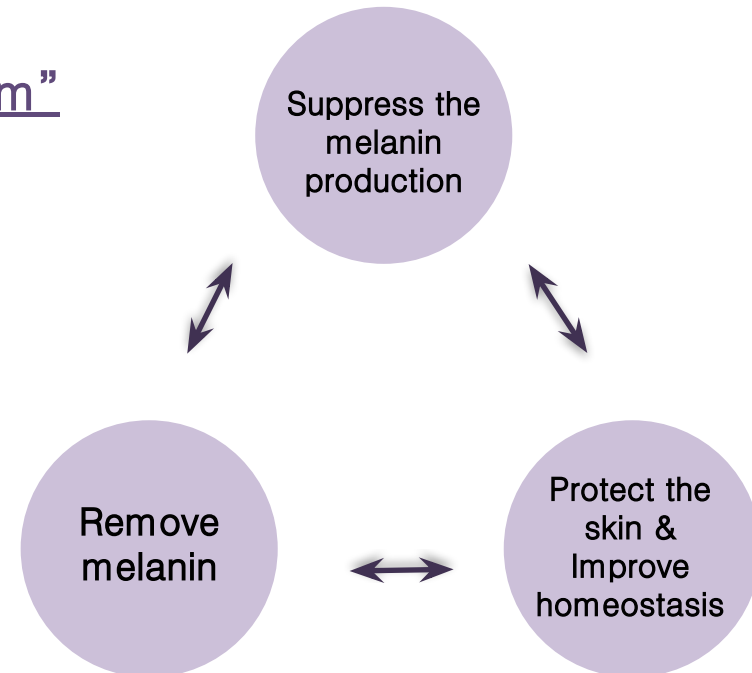
# Deep Whitening Line

## Formation of Melanin



## “3-Step – White Mechanism”

- 1 Step → Inhibit formation of Tyrosinase
- 2 Step → Normalizes skin
- 3 Step → Protect skin



# Deep Whitening Line

Deep whitening line is a high-quality premium cosmetic product that uses nanotechnology to absorb the effective ingredient deep into the skin.

## Deep Whitening Serum / 250ml

An emulsion type serum that contain arbutin and Inhibiting thyrosinase which prevents the formation of melanin pigments.

### Main Ingredients

- Allantoin : Relieve skin stress, Skin improvement
- Salix Nigra (Willow) Bark Extract : Improving skin's elasticity

### How to use

- Apply over face and neck after skin, then gently pat for better absorption.





# Deep Whitening Line

## Deep Whitening Cream / 240ml

A Nourishing cream delivers deep moisture to the skin to keep it moisturized and also helps skin whitening.

### Main Ingredients

- Salix Nigra (Willow) Bark Extract : Improving skin's elasticity
- Betaine : Improving skin's elasticity

### How to use

- Apply over face and neck after serum, then gently pat for better absorption.



# Black Head Solution

## Black Head Solution / 300ml

T-zone control product to remove sebum and impurities from pores.

### Main Ingredients

- Peppermint extract : Skin improvement
- Dipotassium Glycyrrhizate : Sebum control
- Charcoal powder : Sebum adsorption

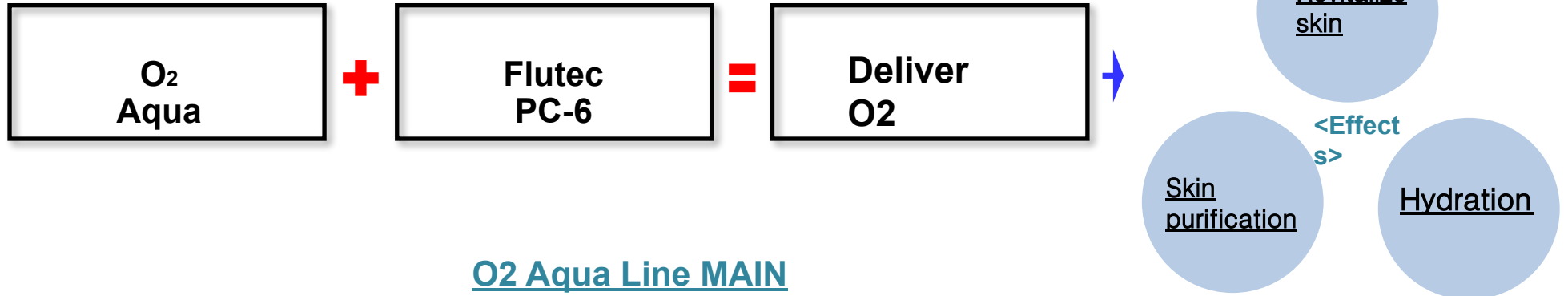
### How to use

- After cleansing, put a steamed towel onto the T-zone area.  
Soak the cotton pad with the X lotion wipe onto the desired part.  
After 15-20 minutes, remove the sebum.



# Aqua Soothing Line

## Skin O2 Delivery System



## O2 Aqua Line MAIN INGREDIENTS

Include more than 17 times of oxygen, supply skin the oxygen and moisture, make skin clear & give elasticity to the skin.



### Perfluorodecalin

This ingredient was investigated in Russia, also used as cosmetic ingredients. According to the research, an organism can breath in this ingredients.



### Laminaria Digitata Extract

It's a kind of seaweed, excellent in wrinkle improvement. And also and boost skin firmness around them.

# Aqua Soothing Line

Fucoidan (Laminaria Digitata Extract) and Biosaccharide Gum-1 and Beta-glucan compounds help strengthen and restore skin's moisture barrier.

It is deeply hydrate , protect and help prevent water loss from skin.

## Aqua Marine Toner / 1000ml

A gentle toner soothe and improves the feel of skin.

### Main Ingredients

- Perfluorodecalin : Helps moisturize and soften skin
- Laminaria Digitata Extract : Sebum control, Improving skin's elasticity.
- Betaine : Improving skin's elasticity.

### How to use

- Put a proper amount of skin on a cotton pad and gently wipe entire face.



# Aqua Soothing Line

## Aqua Marine Cream / 250ml

A cream that help maintain skin hydration and elasticity.

### Main Ingredients

- Laminaria Digitata Extract : Sebum control
- Biosaccharid Gum- 1 : Skin moisturizing
- $\beta$ -glucan : Relieve skin stress, Skin improvement

### How to use

- Apply over face and neck after serum, then gently pat for better absorption.



# Peeling Line

## Phytogen Peel Hydra Mist / 50ml X 4ea

A moisture mist with 24hour hydration, it helps soften and moisturize skin.

### Main Ingredients

- BSAM : Relieve skin stress
- Betaine : Improving skin's elasticity.
- Allantoin : Relieve skin stress, Skin improvement

### How to use

- After washing the face, it can be used as a skin toner. When the skin feels dry, spray it over the face .

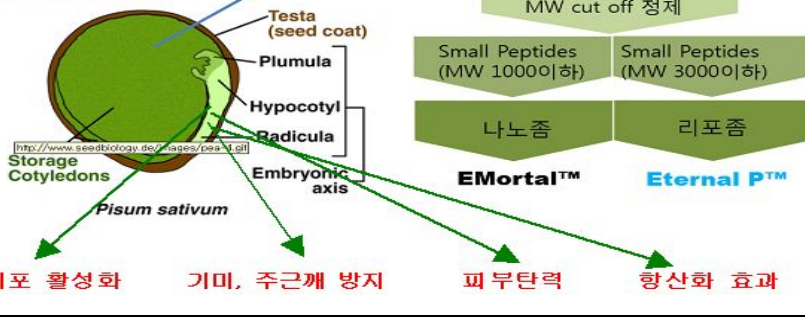


# Stem Cell Line

## Stem Cell System Mechanism

**NO Surfactant NO Preservative NO Mineral oil NO Paraben NO Artificial dyes**

완두콩에서 얻어진 수용성 Small Peptides를 리포솜화 한 신소재 - Eternal P



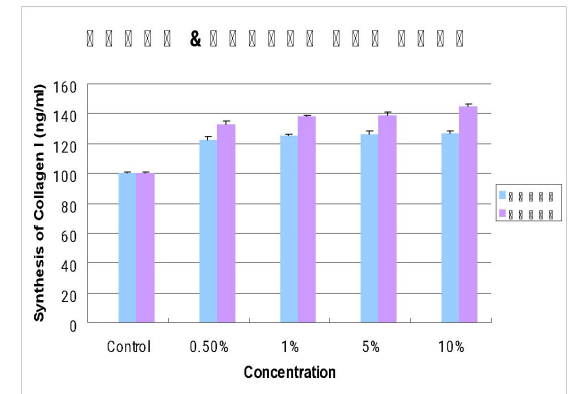
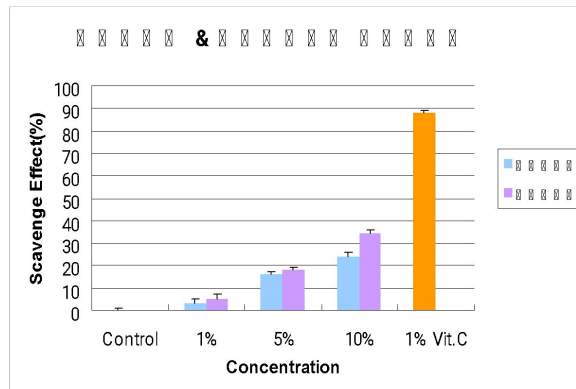
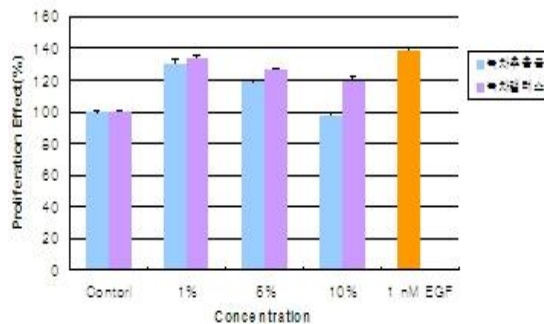
## NO1. Stem cell activator (Eternal PTM)



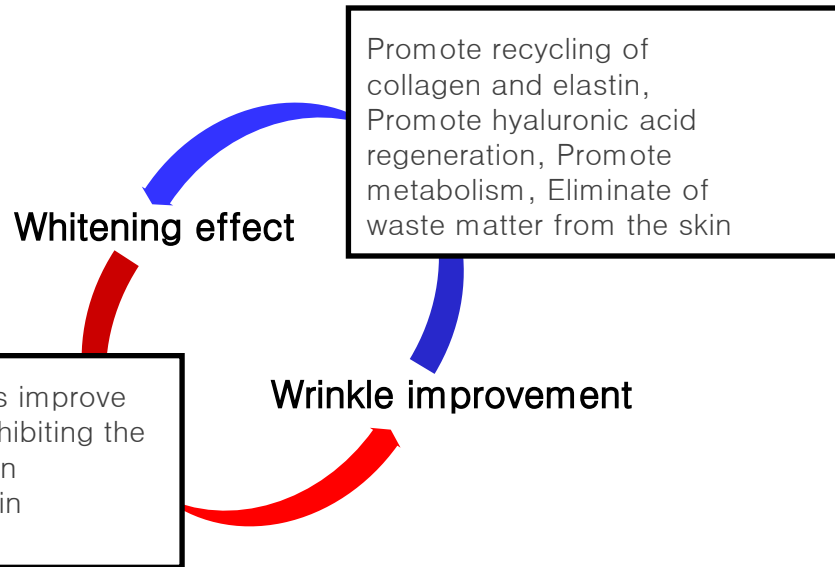
## Green tea callus culture extract

Green tea keeps your skin glossy and healthy with catechin ingredients that help remove skin waste and prevent aging, tannins soothe your skin and vitamins effective in whitening.

녹차추출물 & 녹차퀵러스의 세포증식효과



# Stem Cell Line



## Soybean phytoplacenta

- Contains the Protein Placenta to help improve elasticity and purify complexion, replace collagen to keep skin looking younger.



## 100% Hyaluron Base

More than 90% Hyaluronic Acid  
With over 90% hyaluron base, the skin barrier is formed to keep the dry, rough skin soft and moisturized.



- Help skin stay hydrated and retain moisture.
- Helps moisturize and soften skin.
- No artificial preservatives.



# Stem Cell Line

With liposome technique to capsulize the naturally derived ingredients, including Soybean extract, effectively and quickly absorb by skin. Stem cell line products fortifying skin elasticity.

## Stem Cell Ampoule / 1ml X 30ea

A stem cell ampoule that contain stem cell activator soothes and improves the feel of skin.

### Main Ingredients

- Stem Cell Activator (Eternal PTM) – Strengthen skin barrier, Prevent skin damage
- Green tea callus culture extract – Protect collagen & elastin, Improving skin's elasticity
- Soybean phytoplacenta – Moisturizing

### How to use

- Apply over face and neck after toner, then gently pat for better absorption.



## Stem Cell Solution / 5ml X 10ea

A solution that enhances skin elasticity and soothe skin by containing plant-based placenta, also help even skin tone.

### Main Ingredients

- Soybean phytoplacenta – Moisturizing
- Hyaluronic acid : Skin moisturizing, Nourishing skin

### How to use

- For MTS ampoule solution. Apply proper amount, then gently pat for better absorption.



# Stem Cell Line

## Stem Cell Skin / 500ml

A serum that formulated with naturally derived ingredients calming and soothing skin also provides moist

### Main Ingredients

- Soybean phytoplacenta – Moisturizing
- Olive oil : Improving skin's elasticity.
- Squalane : Help cleanse pores

### How to use

- Put a proper amount of skin on a cotton pad and gently wipe entire face.



## Cure Cell / 50ml

A skin protective serum that protects skin from external aggressors.

### Main Ingredients

- Soybean phytoplacenta – Moisturizing
- Green tea callus extrac : Skin barrier management, Preventing skin damage
- Licorice extract : Sebum control

### How to use

- Apply over face and neck after toner, then gently pat for better absorption.



# Stem Cell Line

## Stem Cell Serum / 200ml

This fluid serum contains callus culture extract to increase skin elasticity, also contain hyaluronic acid and shea butter, which has excellent moisturizing effects.

### Main Ingredients

- Soybean phytoplacenta – Moisturizing
- Olive oil : Improving skin's elasticity.
- Squalane : Help cleanse pores

### How to use

- Apply over face and neck after serum, then gently pat for better absorption.



## Stem Cell Hydro Cream / 100ml

For normal to oily skin. A cream that contains stem cell activator and Ceramide NP to strengthen skin's moisture barrier.

### Main Ingredients

- Soybean phytoplacenta – Moisturizing
- Olive oil : Improving skin's elasticity.
- Squalane : Help cleanse pores

### How to use

- Apply over face and neck after serum, then gently pat for better absorption.



# Stem Cell Line

## Stem Cell Rich Cream) / 100ml

For normal to dry skin. A cream that contains moisture ingredients to smooth and hydrate skin.

### Main Ingredients

- Soybean phytoplacenta – Moisturizing
- Green tea extract : Skin Improvement, Skin moisturizing
- Allantoin : Relieve skin stress, Skin improvement
- Centella Asiatica : Strengthen skin barrier, Prevent skin damage

### How to use

- Apply over face and neck after serum, then gently pat for better absorption.



## Stem Cell Coconut Mask) / 1EA, 1BOX(5ea)

A coconut bio cellulose mask, formulated with Green tea callus culture extract, Portulaca extract, Ac soothes the skin.

### Main Ingredients

- Soybean phytoplacenta – Moisturizing
- Portulaca extract : Skin Improvement, Skin moisturizing
- Allantoin : Relieve skin stress, Skin improvement



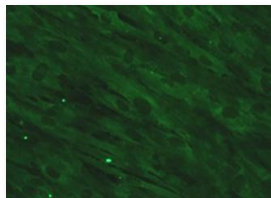
# Holding Time Line – TOX Line

## SKIN REGENERATED 3 AXIVATOR

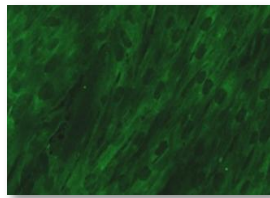
Holding Time Line products compose of Polysaccharide which give elasticity to the skin and make rough skin smoothly.

### EPS SEAFILL

A high molecule which compose of marine microbes plankton. It has excellent moisturizing and firming effect.

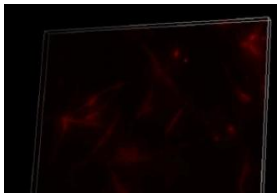


(치유되지 않은 섬유아세포)

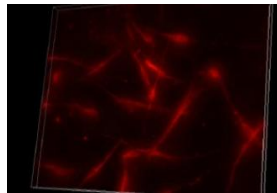


(섬유아세포 + EPS SEAFILL 2%)

**EPS SEAFILL 2%, -> increase 20% collagenesis**



(치유되지 않은 섬유아세포)

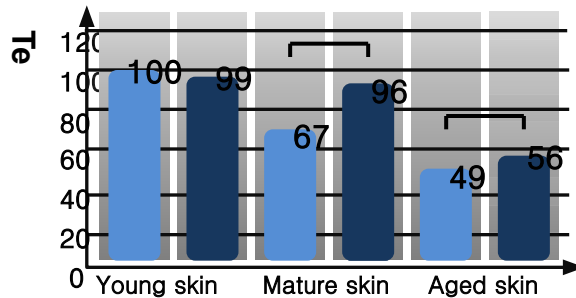


(섬유아세포 + EPS SEAFILL 2%)

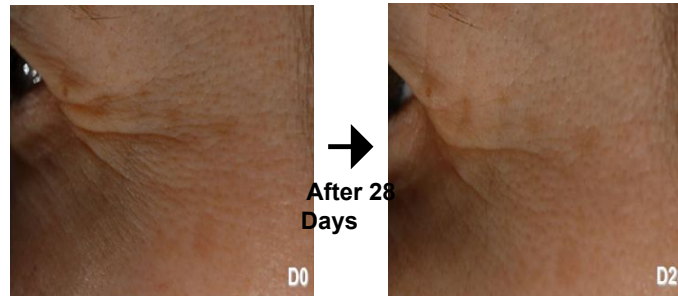
**EPS SEAFILL 2% -> increase 21% elastin**

### PHYCOJUVENINE G

Belongs to seaweed, derivatives that is related to Vitamin A, good at reducing the wrinkles.



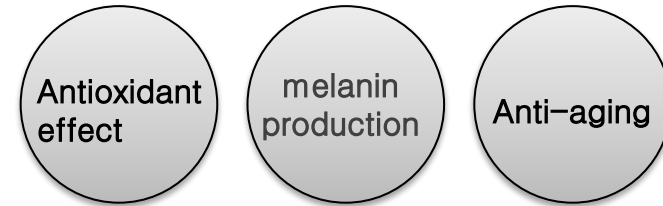
Without phycojuve (light blue), With phycojuvenile (dark blue)



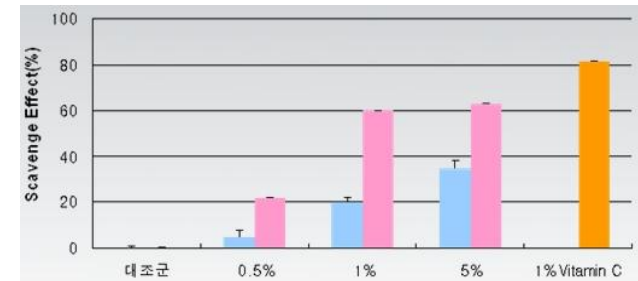
(Anti-aging effect)

### Tomato Callus Culture Extract

It is also called as plant stem cells, is a tissue which make prosperous division around the wound when skin get damaged. Callus make prosperous division, It have high levels of physiologically-active substances, which are more effective than ordinary plants.



•Effect of Tomato Callus Culture Extract



토마토캘러스 배양추출물은 토마토 보다 2~3배 항산화 효과가 있다.

토마토추출물 (light blue), 토마토캘러스배양추출물 (pink)

# Holding Time – TOX Line

## Holding Time – TOX Cream / 100ml

An anti-wrinkle nourishing cream. It has polysaccharide-protein that protects skin and maintains skin elasticity for a long time.

### Main Ingredients

#### – EPS SEAFILL

A high molecule which compose of marine microbes plankton. It has excellent moisturizing and firming effect.

#### – PHYCOJUVENINE G

Belongs to seaweed, derivatives that is related to Vitamin A, good at reducing the wrinkles.

#### – Tomato Callus Culture Extract

It is also called as plant stem cells, is a tissue which make prosperous division around the wound when skin get damaged. Callus make prosperous division, It have high levels of physiologically-active substances, which are more effective than ordinary plants.

### How to use

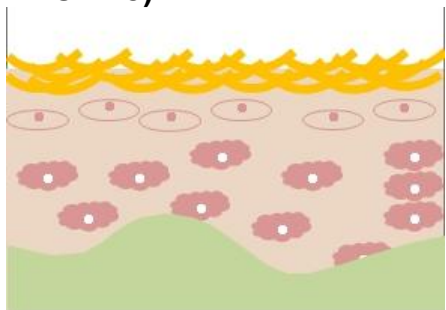
- Apply over face and neck after ampoule, then gently pat for better absorption.



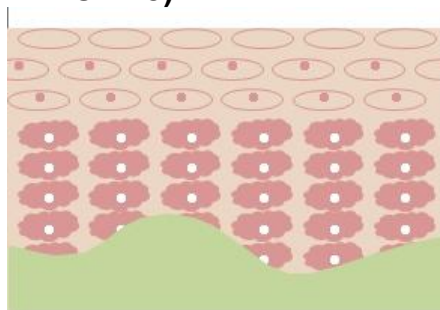
# Holding Time – Snail Line

Holding Time Line products compose of Polysaccharide which give elasticity to the skin and make rough skin smoothly.

(Before absorb snail smile)



(After absorb snail smile)



- Rough skin due to dead skin cells
- Wrinkles and sagging tissues
- Improved skin texture and surface layer defense
- Improved wrinkles and restored skin

## What is the ingredient of snail?

1

### Ability to self recovery

When snail get hurts, It make mucus to self-recover the skin.

2

### Moisture storage capacity

The reason that the body of a snail can always keep moist is because of the component called mucin, it has excellent moisture storage ability.

3

### Using natural complex material, No irritation to the skin

Snail, which is natural complex material, care and calm damaged skin without irritation. Makes your skin healthy.

## 3-step system

### STEP 1 – Skin restoration care



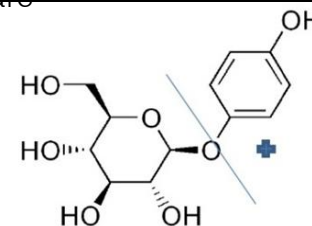
Snail smile (30%) – Snail smile is known to help strengthen and restore skin's moisture barrier.

### STEP 2 – Strengthen skin barrier



E.G.F – Maintain skin elasticity with epithelial cell growth factor, Anti-aging and wrinkling care.

### STEP 3 – Whitening care



Niacinamide – Helpful in lightening dark spots.

# Holding Time – Snail Line

## Holding Time – Snail Serum / 10ml X 5ea

An essence contains snail smile (20%) to deliver moisture and also protect skin without leaving stickiness.

### Main Ingredients

- Snail smile (30%) – Help strengthen and restore skin's moisture barrier.
- E.G.F – Maintain skin elasticity with epithelial cell growth factor, Anti-aging and wrinkling care.

### How to use

- Apply over face and neck after toner, then gently pat for better absorption.



## Holding Time – Snail Cream / 100ml

A highly enriched cream, made with snail smile(30%) deeply hydrate and help prevent water loss from skin.

### Main Ingredients

- Snail smile (30%) – Help strengthen and restore skin's moisture barrier.
- E.G.F – Maintain skin elasticity with epithelial cell growth factor, Anti-aging and wrinkling care.

### How to use

- Apply over face and neck after toner and ampoule, then gently pat for better absorption.





# CLAIR Line

CLAIR – Wrinkle Source / Wrinkle-improving Functional Product/ 100ml

Anti-aging ingredients penetrate into the skin, help smooth wrinkles.

Wrinkle care – Tomato callus stem cell extract, EGF, Adenosine

Wrinkle care mechanism

Give elasticity, Improving skin texture, Strengthen skin barrier, Anti-aging effect.



CLAIR – Deep Whitening Source / Whitening Functional product/ 100ml

Whitening ingredients penetrate into the skin, make your skin clear and bright.

Whitening care – Alpha Bisabolol, Niacinamide, Licorice acid

Whitening care mechanism

Whitening effect, Improve the skin tone, Inhibit melanin synthesis, Prevent hyperpigmentation.



# CLAIR Line

CLAIR – Aqua Marine Source / 100ml

Aqua Marine Source keep your skin moisturized and hydrated.

Moisturizing care – Biosaccharide Gum-1, Poly- $\gamma$ -glutamic acid, Fluoran

Moisturizing mechanism

Biosaccharide Gum-1, Moisturizing effect, Quick absorption, prevent water loss from skin.



# Aroma Massage Oil

Lightweight and luxurious texture Face & Body oil.  
Nourishes skin with hydration and helps it to achieve more soft, supple and smooth skin.

## Squalan Oil / 1000ml

Squalane soften the skin and boost radiance and vitality.

### How to use

– Massage for 10–15 minutes, then remove wipe it.



## JoJoba Oil / 1000ml

Natural jojoba oil 100% helps refine skin texture and make skin feel smoother.

### How to use

– Massage for 10–15 minutes, then remove wipe it.



## Cel Blending Oil / 1000ml

This premium aroma oil made with various kind of essential oil, apply for body and abdomen.

### How to use

– Massage for 10–15 minutes, then remove wipe it.



## D-to Blending Oil / 1000ml

This premium aroma oil helps to nourishes and soften the skin.



# Aroma Massage Oil

## Firming Blending Oil/ 1000ml

This premium aroma blending oil is used for its soothing and softening action on sensitive and dry skin.

### How to use

– Massage for 10–15 minutes, then remove wipe it.



## Relax Blending Oil / 1000ml

This premium aroma oil is helps to relax the senses and ease away tensions.

### How to use

– Massage for 10–15 minutes, then remove wipe it.



## Aroma D-to Oil / 1000ml

A body massage oil contains Peppermint, Olive, Grape seed oil to improve mood and relaxation.

### How to use

– Massage for 10–15 minutes, then remove wipe it.



## Aroma Cel Oil / 1000ml

A body massage oil with the scent of Lemon and Grapefruit oil that used to relieve stress, help firm skin.

### How to use

– Massage for 10–15 minutes, then remove wipe it.



# Special Line

## Soothing Ampoule / 2ml X 10ea

An ampoule that soothes and hydrates skin.

### Main Ingredients

- Green tea extract : Skin Improvement, Skin moisturizing
- Allantoin : Relieve skin stress, Skin improvement

### How to use

- Apply over face and neck after toner, then gently pat for better absorption.

## Clear Ampoule / 2ml X 10ea

An ampoule that visibly boosts skin clarity.

### Main Ingredients

- Tea tree oil : Skin Improvement, Skin moisturizing
- Allantoin : Relieve skin stress, Skin improvement

### How to use

- Apply over face and neck after toner, then gently pat for better absorption.

## Snow Ampoule / 2ml X 10ea

An ampoule helps promote skin brightening and clarity.

### Main Ingredients

- Albutin : **Inhibit Melanin formation**
- Mulberry root extract : Helps promote skin brightening and clarity.
- Licorice extract : Refine skin texture and make skin feel smoother.

### How to use

- Apply over face and neck after toner, then gently pat for better absorption.



# Special Line

## Lifting Ampoule / 2ml X 10ea

An ampoule that help visibly lift skin.

### Main Ingredients

- Witch hazel water : soothes and hydrates skin
- Angelica extract : Helps moisturize and soften skin.

### How to use

- Apply over face and neck after toner, then gently pat for better absorption.



## Moisture Ampoule / 2ml X 10ea

An ampoule that deeply hydrate and help prevent water loss from skin.

### Main Ingredients

- Angelica extract : Helps moisturize and soften skin. Pollen extract : soothes and hydrates skin

### How to use

- Apply over face and neck after toner, then gently pat for better absorption.

