

NEW ZEALAND





Overview

- Capital – Wellington
- Largest city – Auckland
- Language – English, Maori,
- Government – Parliamentary Constitutional Monarchy
- Monarch – Elizabeth II
- Governor General – Sir Jerry Mateparae
- Prime Minister – John Key



HISTORY

- 10th Century A.D. - 1st people to discover New Zealand were from Eastern Polynesia.
- Canoe Voyages brought people from Hawaiki to NZ and they became the Maori tribes.



CONT....

- February 6, 1840 the Treaty of Waitangi was signed by over 500 Maori chiefs.
 - Became a British colony
 - Agreed that Queen of England would have sovereignty over their land because they had no national government or form of laws



Contd.,

- Ethnic Groups - European (70%)
Maori (15%)
Asian (9.2%)
Pacific People (6.9%)
- Area – 270,550 km²
- Population -3.9 million people
- Game – Rugby
- Dependent on natural resources- soil, water, and plants.
- Agricultural, pastoral farming, renewable forestry and tourism.



Climate

Winter
(1`-16`)



Spring
(6`-19`)



Summer
(10'-24`
)



Autumn
(6`-20`)





National Flag

- The flag was introduced in 1869 and officially adopted in 1902.
- Union Jack reflects the country's colonial heritage, while the emblem of the constellation of the Southern Cross (the four stars) reflects its geographic location.

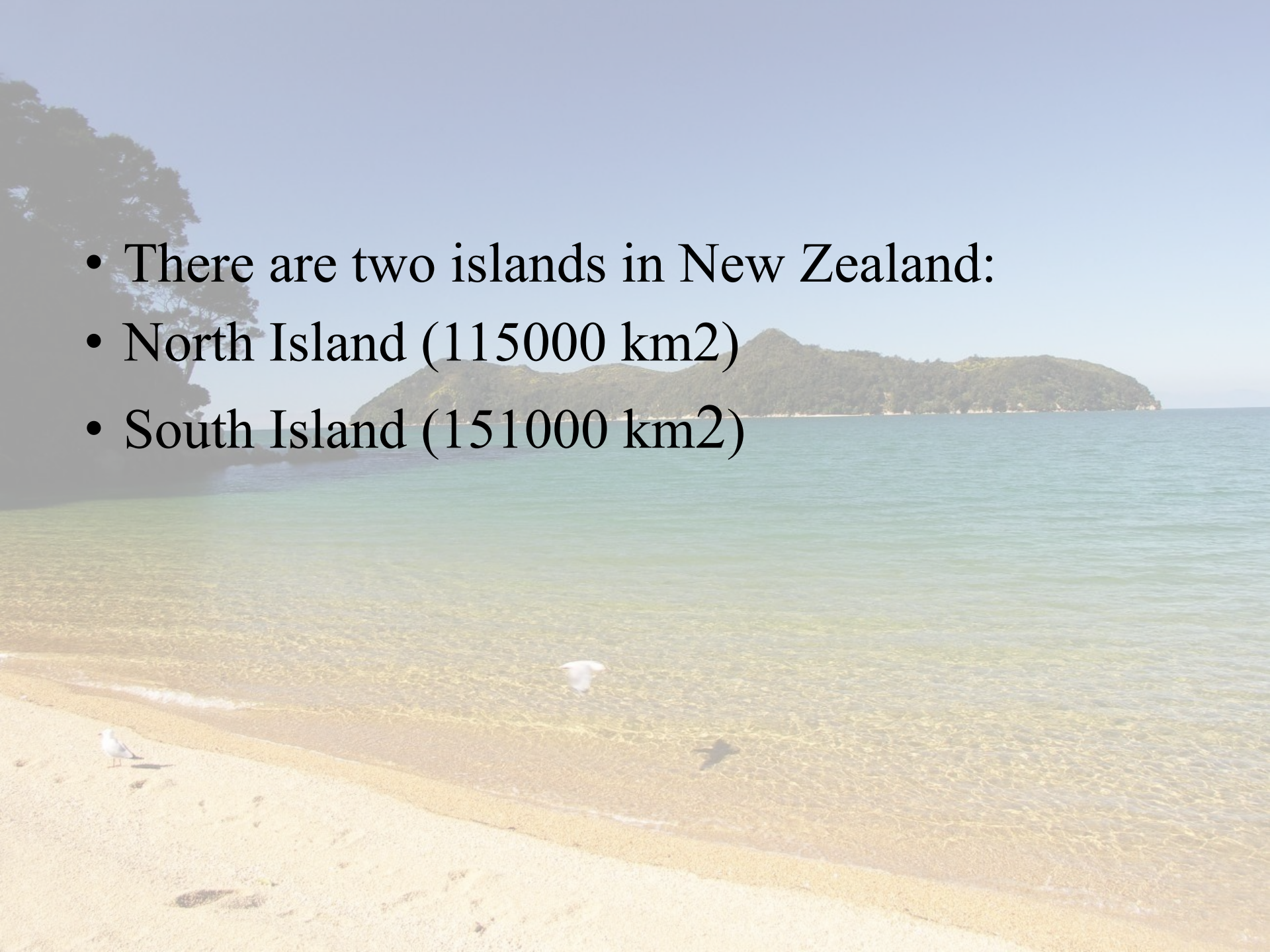


National Emblem

- The kiwi bird is New Zealand's national emblem. Kiwis are very unusual birds – they have bad eyesight and wings. They can sleep for 20 hours a day.



- There are two islands in New Zealand:
- North Island (115000 km²)
- South Island (151000 km²)





NORTH ISLAND



New Zealand North Island

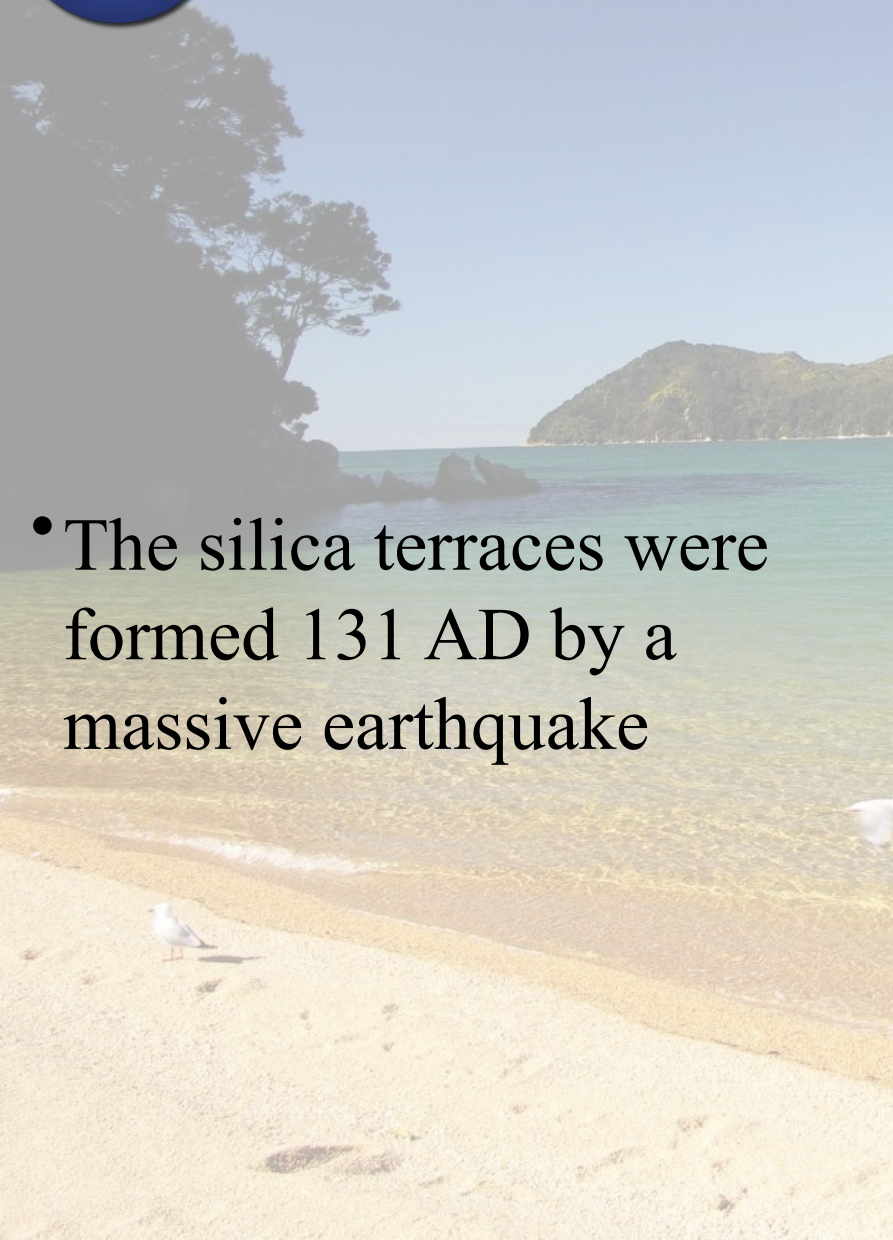


Te Ika-a-Māui





Hidden Valley (Orakei Korako)



- The silica terraces were formed 131 AD by a massive earthquake





Auckland Sky Tower

- It is an Observation and Telecommunication Tower
- The tallest tower (freestanding structure) in the Southern Hemisphere





Parliament



© Lal Perera * www.ClipartOf.com/1052846





Government



- The official head of state is Queen Elizabeth II
- The Government is based on Westminster system
- The Head of the government is Prime Minister
- Queen plays only a formal role in the executive



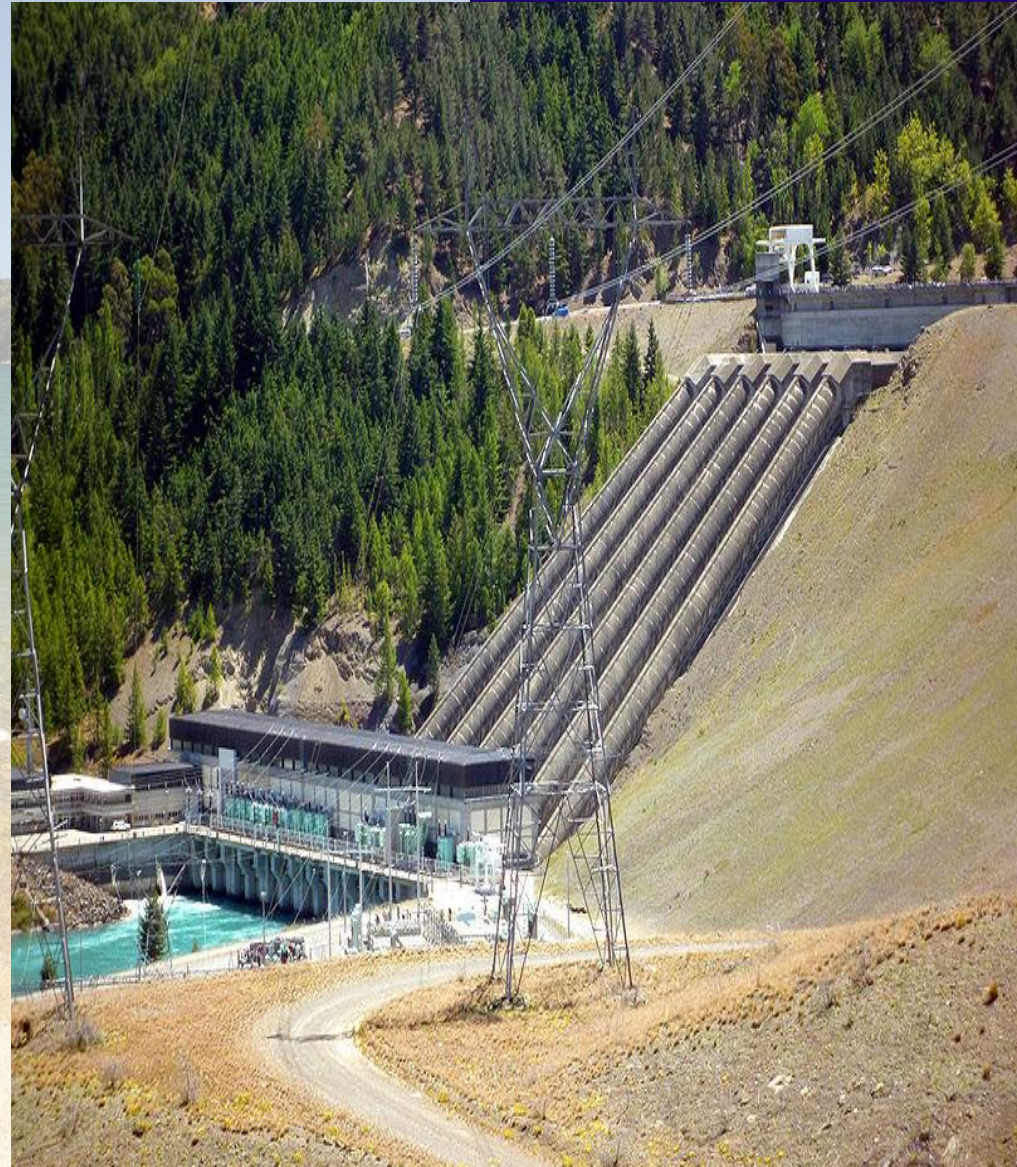
SOUTH ISLAND





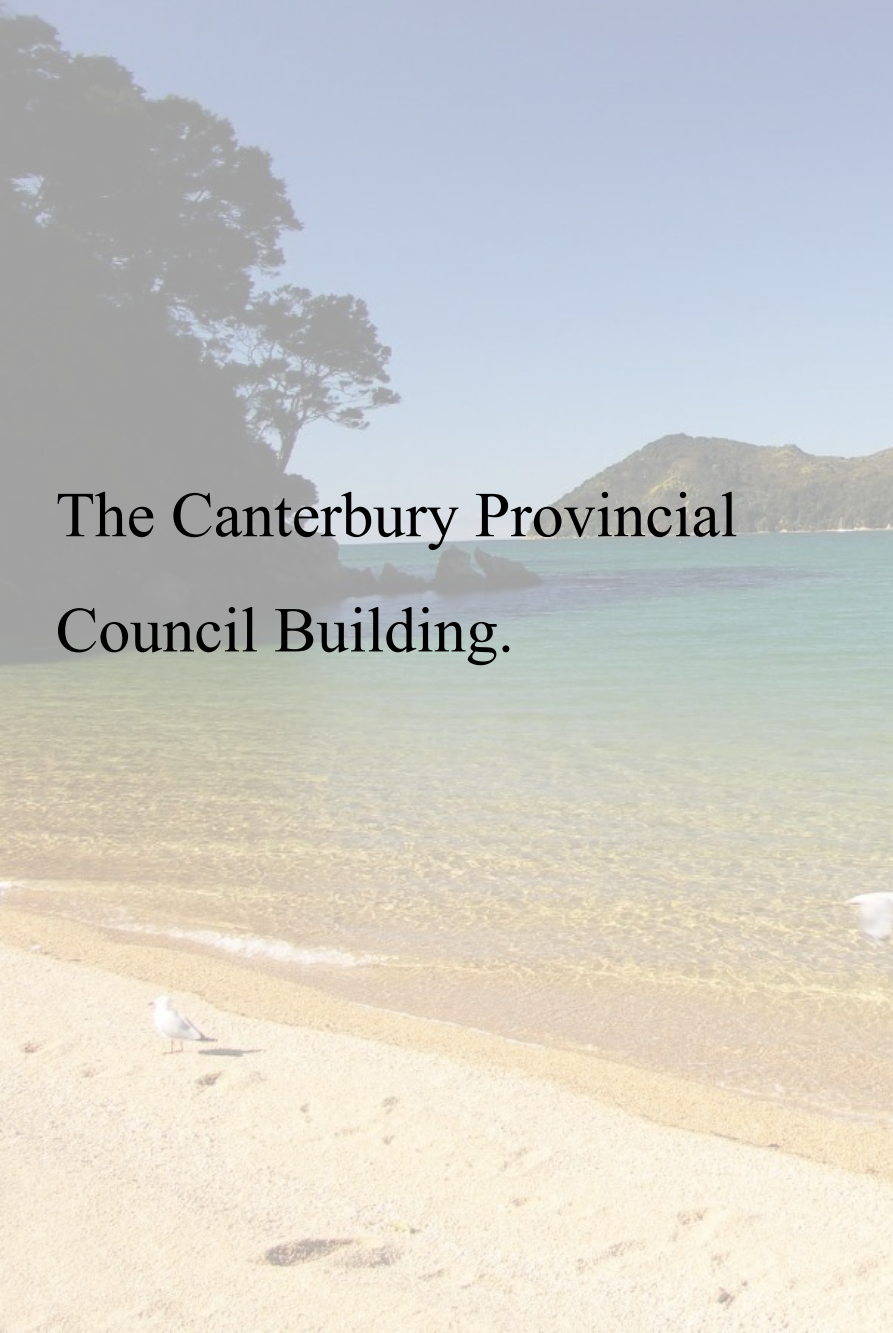


- Benmore Dam is the largest of eight dams within the Waitaki power scheme and was commissioned in 1965



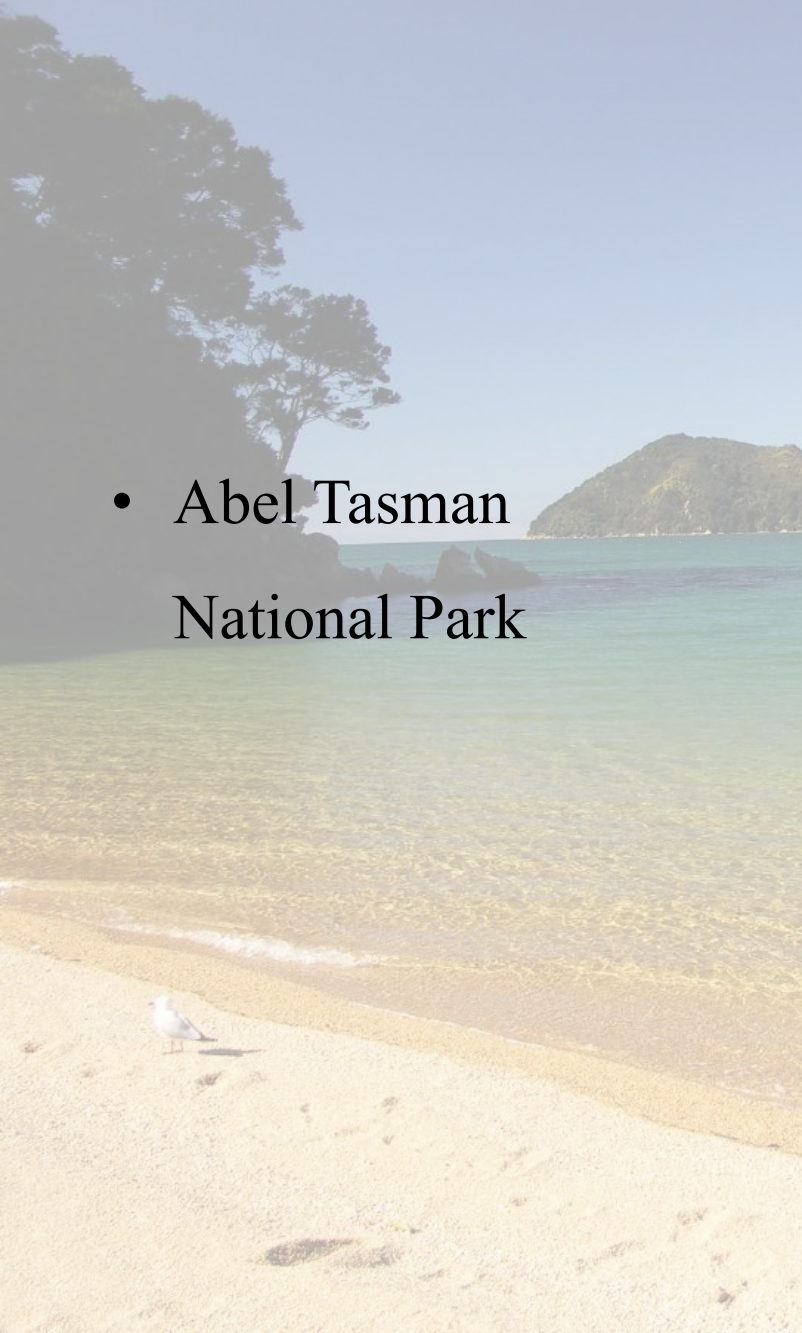


The Canterbury Provincial
Council Building.





- Abel Tasman National Park





- Glaciers

