

Unit 302: Principles of electrical science

Power factor correction

What causes low power factor?

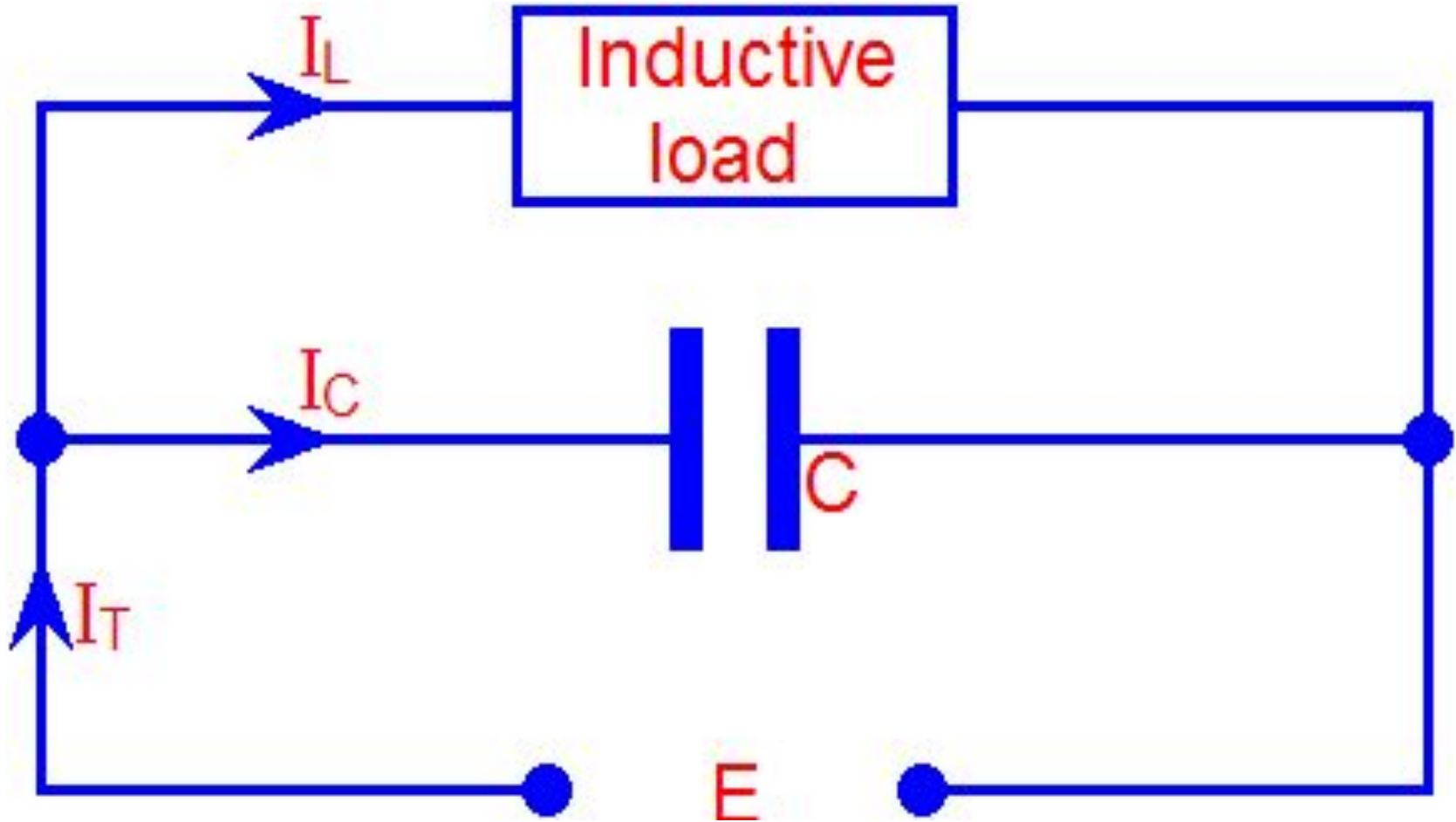
Inductive loads (which are sources of reactive power) include:

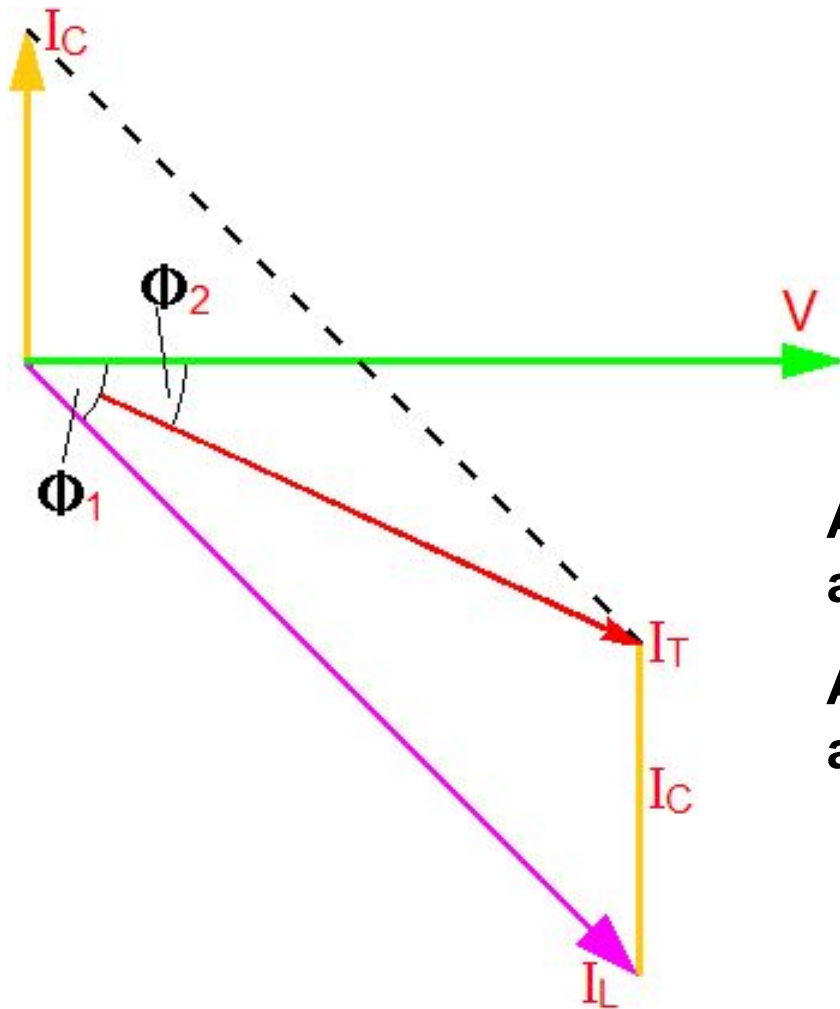
- transformers
- induction motors
- fluorescent luminaires.

Power factor correction

To correct a lagging power factor we connect a device that creates a leading power factor. This usually takes the form of:

- capacitors (bulk correction and load correction)
- synchronous motor.





A LOW power factor correction has a LARGE angle in degrees.

A HIGH power factor correction has a SMALL angle in degrees.

Any questions?