



# Title: *Usage to MTK SN\_STATION Tool*



# Agenda

- Introduction
- **SN\_STATION Tool Operator Procedure**
- **UI & Write Example**
  - Feature Phone BT address(Meta mode)
  - Feature Phone Barcode (AT mode)
  - Smart Phone IMEI(Meta mode)

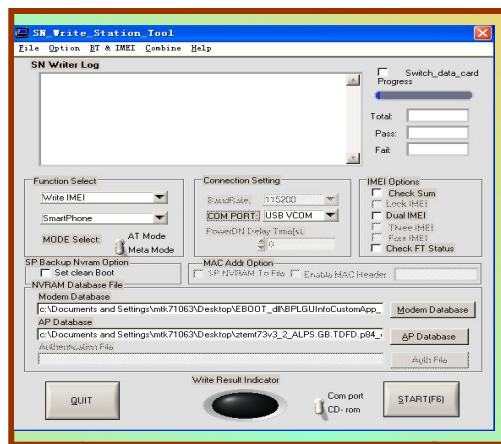


# Introduction



# Introduction 1/2

SN\_STATION  
Tool



USB/UART Cable



Handset Side

PC Side

# Introduction 2/2

- ◆ MTK SN\_STATION tool has four major functionalities:
  - **Barcode**
    - Production Serial Number for a PCBA, is usually use to identify PCBA. Each PCBA should have a barcode number to keep the its test item in production line. So Barcode should be write to PCBA first after Bin download, or before ATE calibration, support max 64 decimal digits
  - **IMEI**
    - International Mobile Equipment Identity, is a number unique to every GSM and WCDMA phone, 14 decimal digits + 1 check digit
  - **Wifi Mac Address** : 12 decimal digits
  - **BT Address** : 12 decimal digits
  - **Four IN One:**
    - You also can use the Four IN one function that can write Barcode, IMEI, Bt address, Wifi Mac address at a time

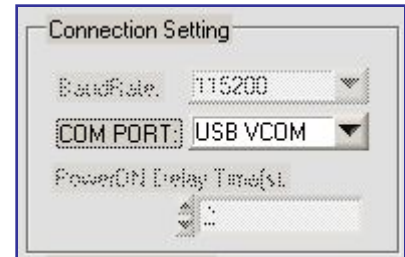


# Tool Operator Procedure



# SN\_STATION Tool Operator Procedure 1/2

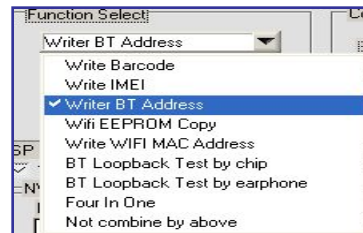
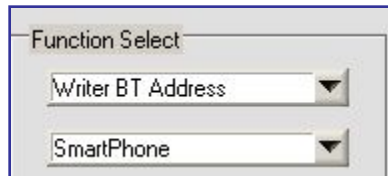
- ◆1. Select the target mobile **Connection setting** : use USB or UART.
  - If choose UART, please select correct baud rate, default is 115200



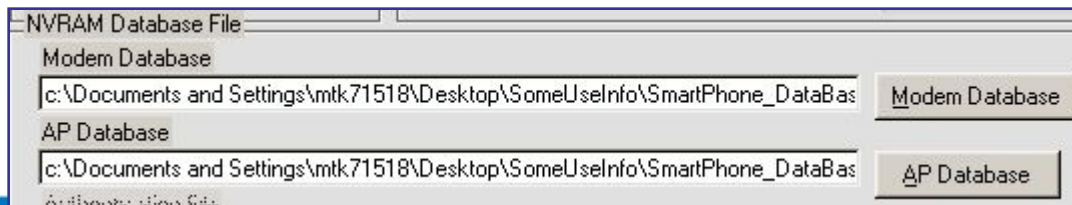
- ◆2. Select the **Operator Mode** : Meta/ AT mode
  - If select the **Meta mode**, must load correct NVRAM database of MAUI;
  - **AT mode** don't need NVRAM database file
  - Note: Current AT mode only support Feature Phone



- ◆3. Select the operation to **Platform and Function** : Feature/Smart Phone



- ◆4. Select the **NVRAM database** file(if AT mode, this step can pass)
  - If platform is Smart Phone, AP database and modem database must load



# SN\_STATION Tool Operator Procedure 2/2

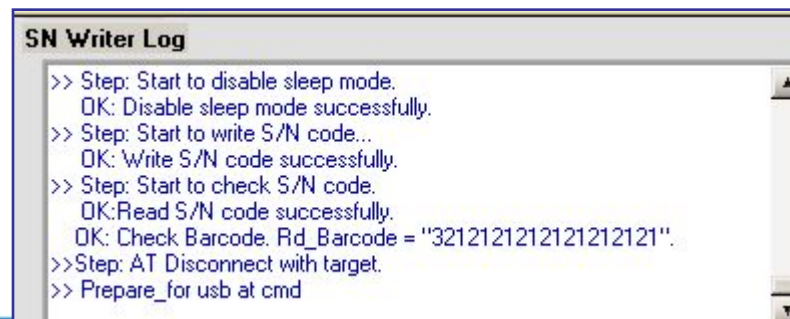
- ◆5. Click the **START** Button to commence the write operator
  - Note: If Device is **Datacard**(such 76M datacard), please checked the **Switch\_data\_card** at the top-right corner.



- ◆6. Input the correct data and click **Enter** Button to wait for connecting target



- ◆7. Inset the USB cable to connect with Target
  - This is for **Meta mode**; If **AT mode**, the Dialog box appear after connect with target
  - The dialog box reappear again when the barcode or IMEI has been successfully written, right now you can connect the next handset with USB cable
- ◆8. The operator result display on main UI :
  - Write Result Indicator turn **Green** mean Success, **Red** mean Fail







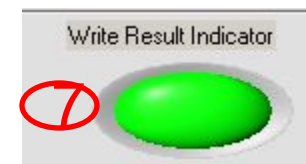
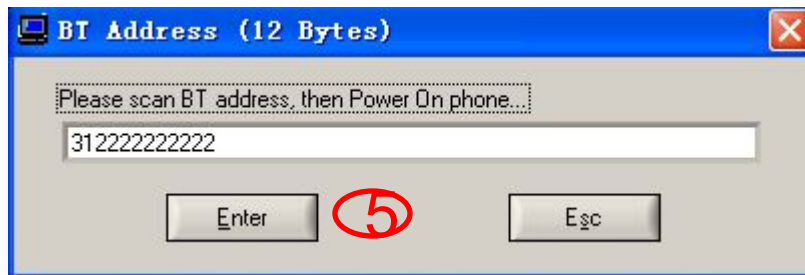
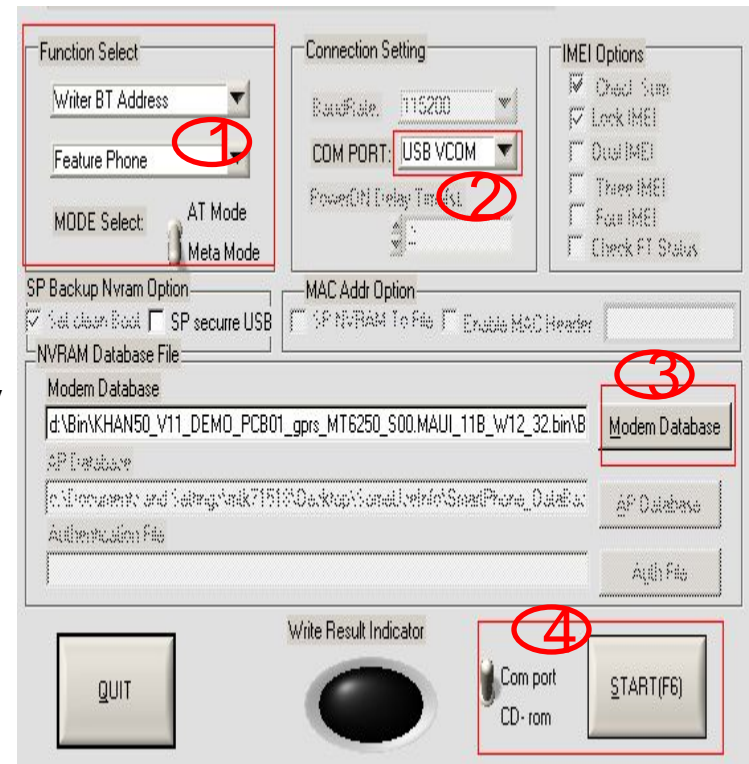
# UI & Write Example



# UI & Write Example

- Feature Phone BT address(Meta mode)

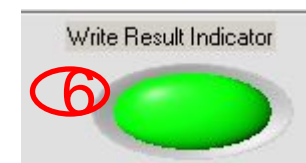
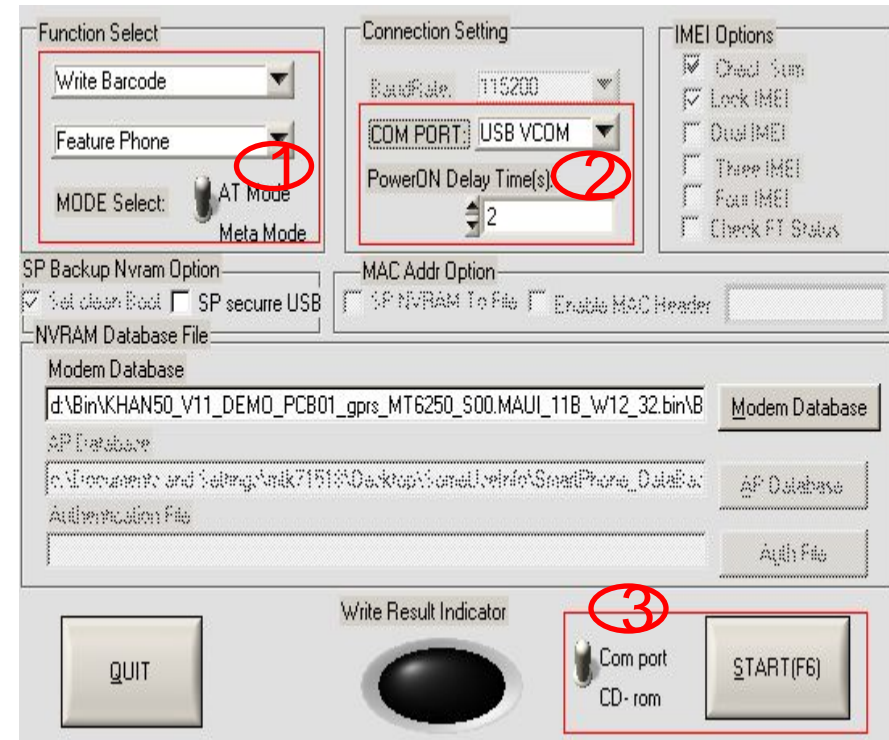
- 1) Set Function Select to  
“Write BT Address” + “Feature Phone” + “Meta mode”
- 2) Select COM PORT “USB VCOM”
- 3) Select the database file for your phone
- 4) Press the “START” button
- 5) Scan the BT address, then press “Enter” button or type “Enter” key
- 6) Now insert the USB cable make your phone to enter META mode
- 7) Wait for the operator result, if the  
“Write Result Indicator” turn **Green** mean the  
operator is **successfully**, else if “Write Result Indicator”  
turn **Red** mean the operator is **Fail**



# UI & Write Example

- Feature Phone write Barcode(AT mode)

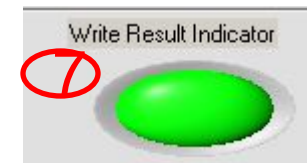
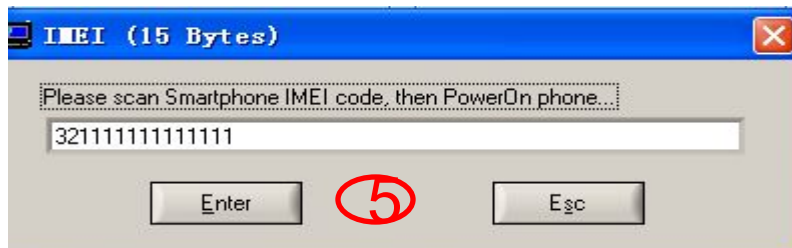
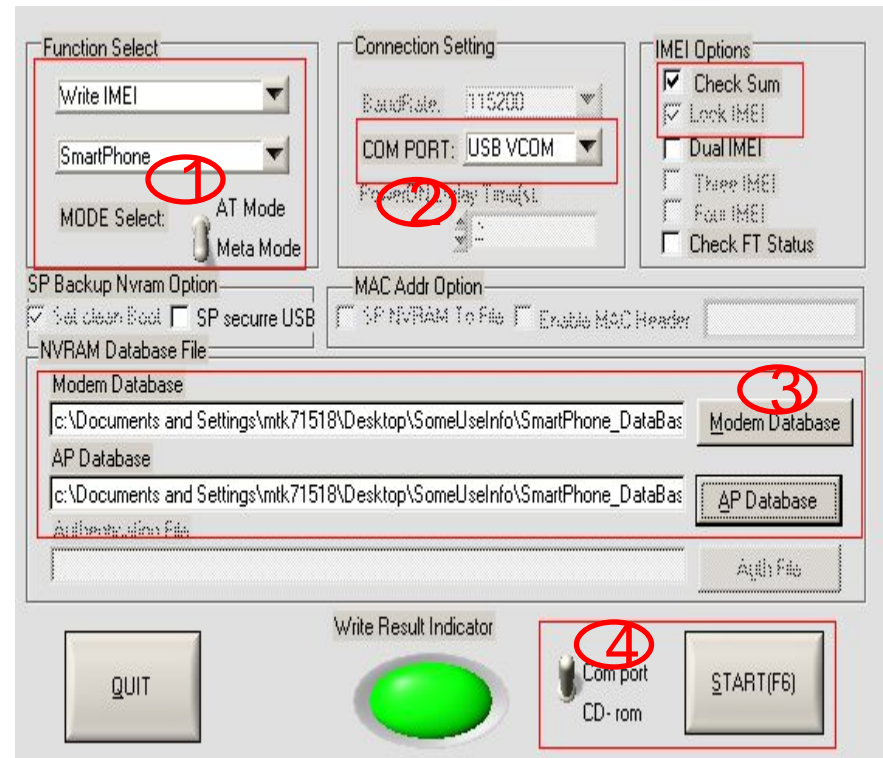
- 1) Set Function Select to  
“Write Barcode” + “Feature Phone” + “AT mode”
- 2) Select COM PORT “USB VCOM”
- 3) Press the “START” button
- 4) Now insert the USB cable to power on your phone
- 5) Scan the Barcode, then press “Enter” button
- 6) Wait for the operator result, if the  
“Write Result Indicator” turn **Green** mean the  
operator is **successfully**, else if “Write Result Indicator”  
turn **Red** mean the operator is **Fail**



# UI & Write Example

## Smart Phone write IMEI(Meta mode)

- 1) Set Function Select to  
“Write IMEI” + “Smart Phone” + “Meta mode”
- 2) Select COM PORT “USB VCOM”
- 3) Select the database file for your phone
- 4) Press the “START” button
- 5) Scan the IMEI , then press “Enter” button
- 6) Now insert the USB cable make your phone  
to enter META mode
- 7) Wait for the operator result, if the  
“Write Result Indicator” turn **Green** mean the  
operator is **successfully**, else if “Write Result Indicator”  
turn **Red** mean the operator is **Fail**
- 8) **Note:** if IMEI Option check the **Lock IMEI**, this mean the IMEI can **only write one times** if operator is successfully. If you want to rewrite IMEI again, you must **Format FAT!!!**





## Q & A



## 1、What can I analyse when the operator fail?

-- Actually all operator log information display on the main UI, such as



```
SN Writer Log
>> Prepare_for usb at cmd
Get Dynamic USB Com Port Fail!
>>Step: Enter func_imei_meta_hdr_smart_phone_modem();
      Write IMEI to smartphone modem nvram
>>Step: Start to Init Modem Nvram Database...
      OK: Init Modem Nvram Database successfully.

>>-----<<
>>Step: Scan Smartphone IMEI.
```

## 2、If you want to get help from MTK, what information should I offer?

-- As the No.1 refer , you can provide the UI Log and the META\_DLL.log file, and the META\_DLL.log file path default is "C:\"; If Smart Phone, SPMETA\_DLL.log also need.

## 3、If platform is MT6582 smart phone,you should add such items in SN\_SETUP.txt

-- World Phone MD Index = 1

-- World Phone SW Version = 3 or 5(3: WCDMA phone; 5 :TD phone)



# MEDIATEK

[www.mediatek.com](http://www.mediatek.com)

