

Component Enabler for .NET

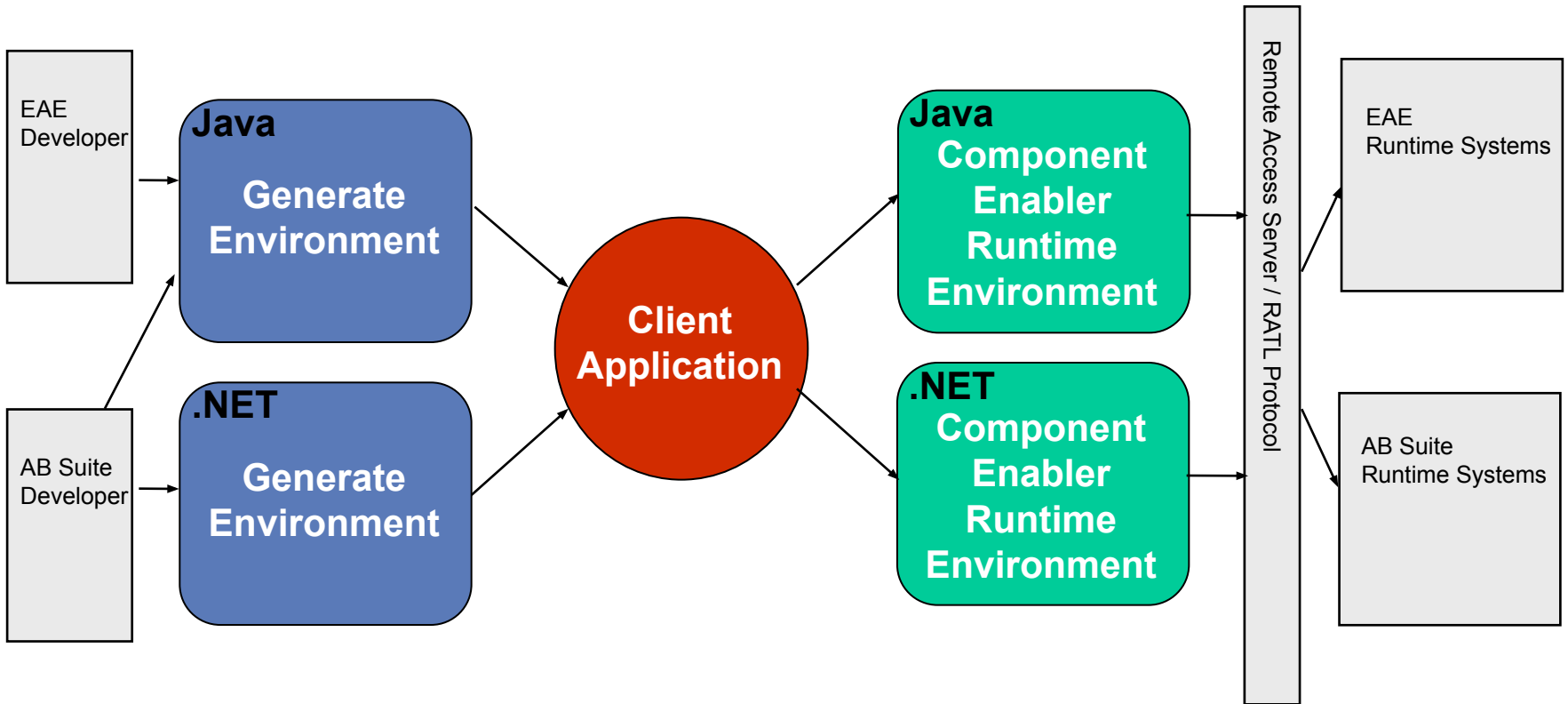
*Introduction to Component
Enabler for .NET*

Overview

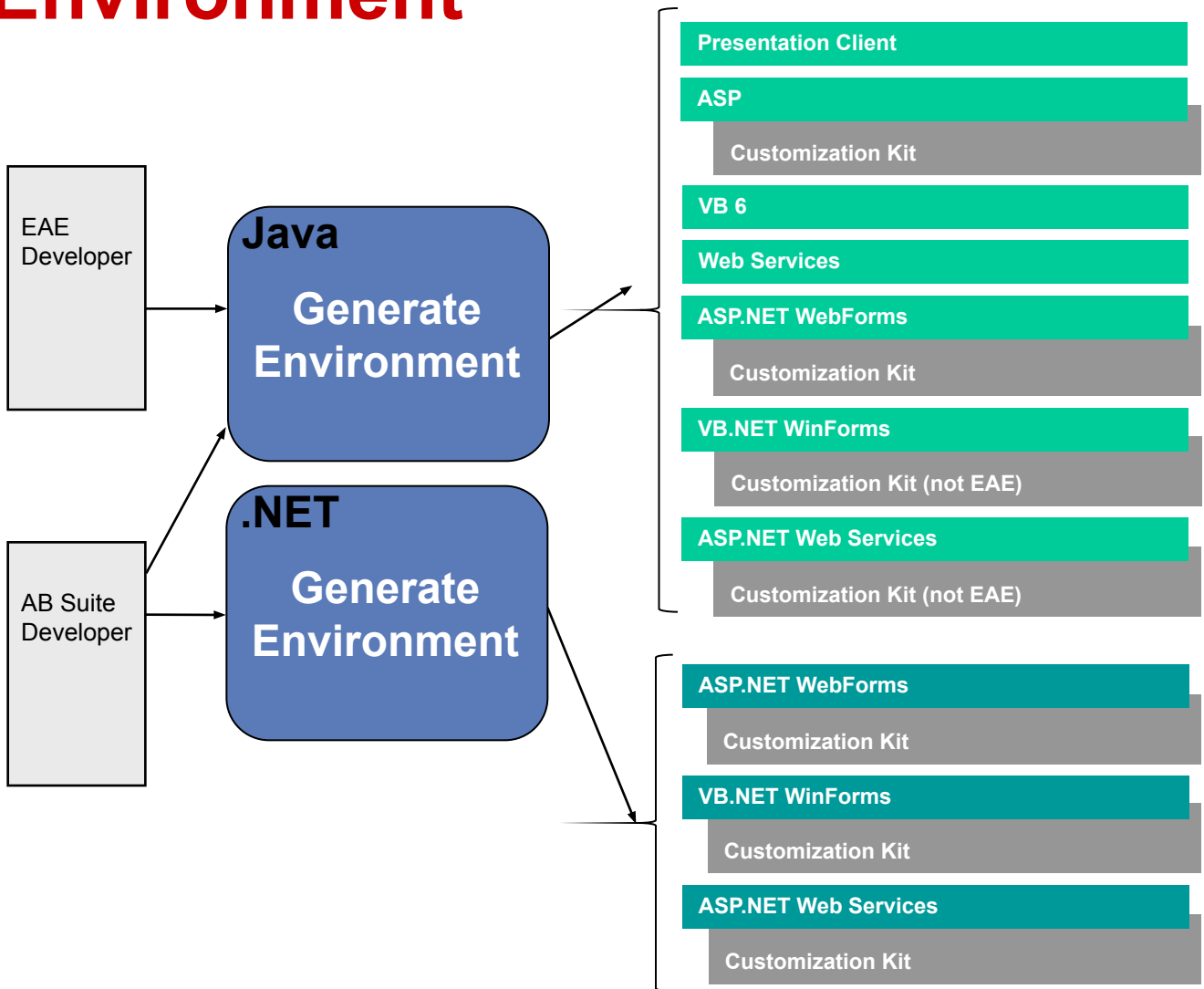
- Architectural overview
- Component Enabler Windows API
- Migrating existing clients to use the Component Enabler for .NET Runtime
- IspecModel files

Architectural Overview

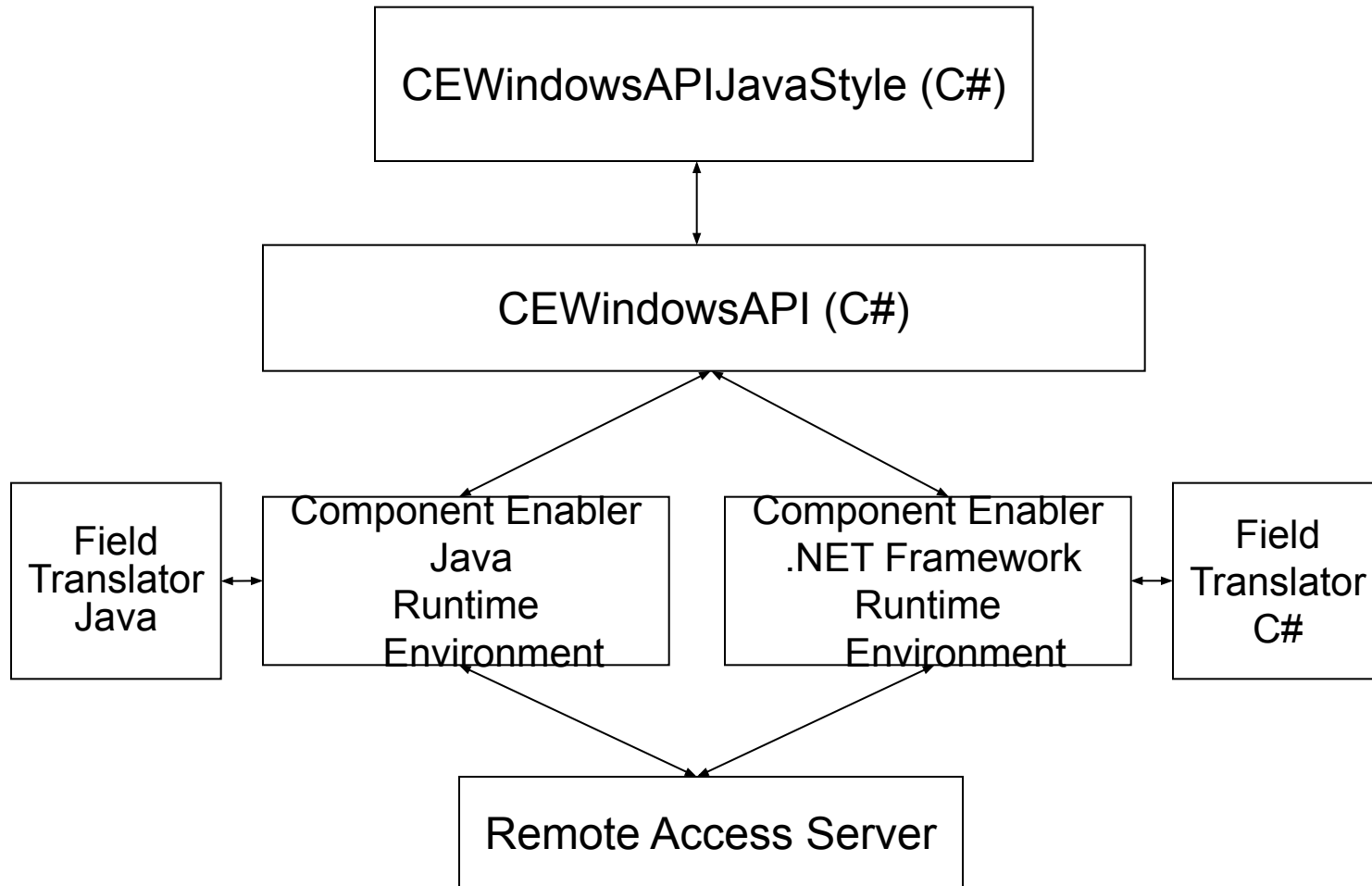
Client Tools



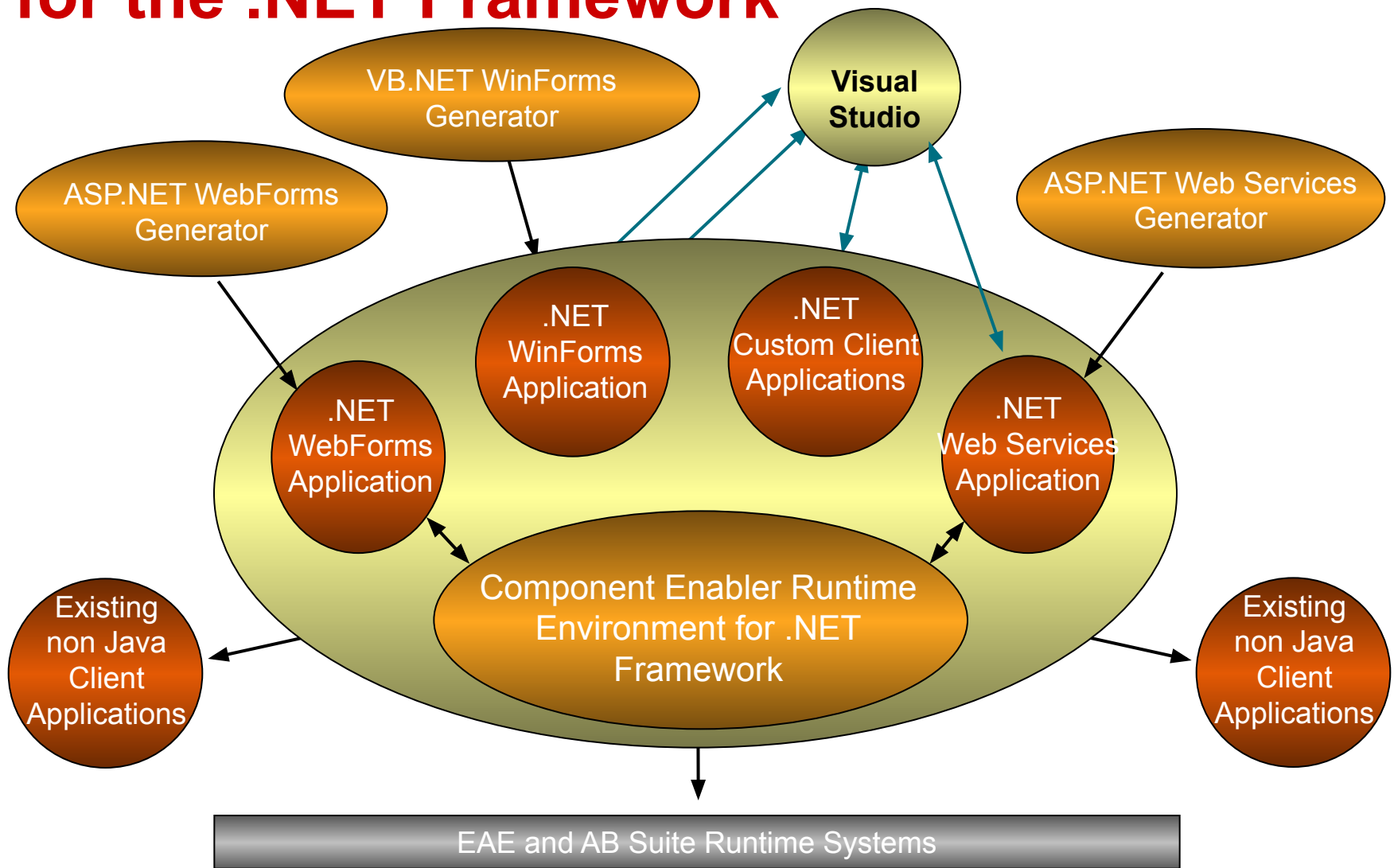
Component Enabler Generate Environment



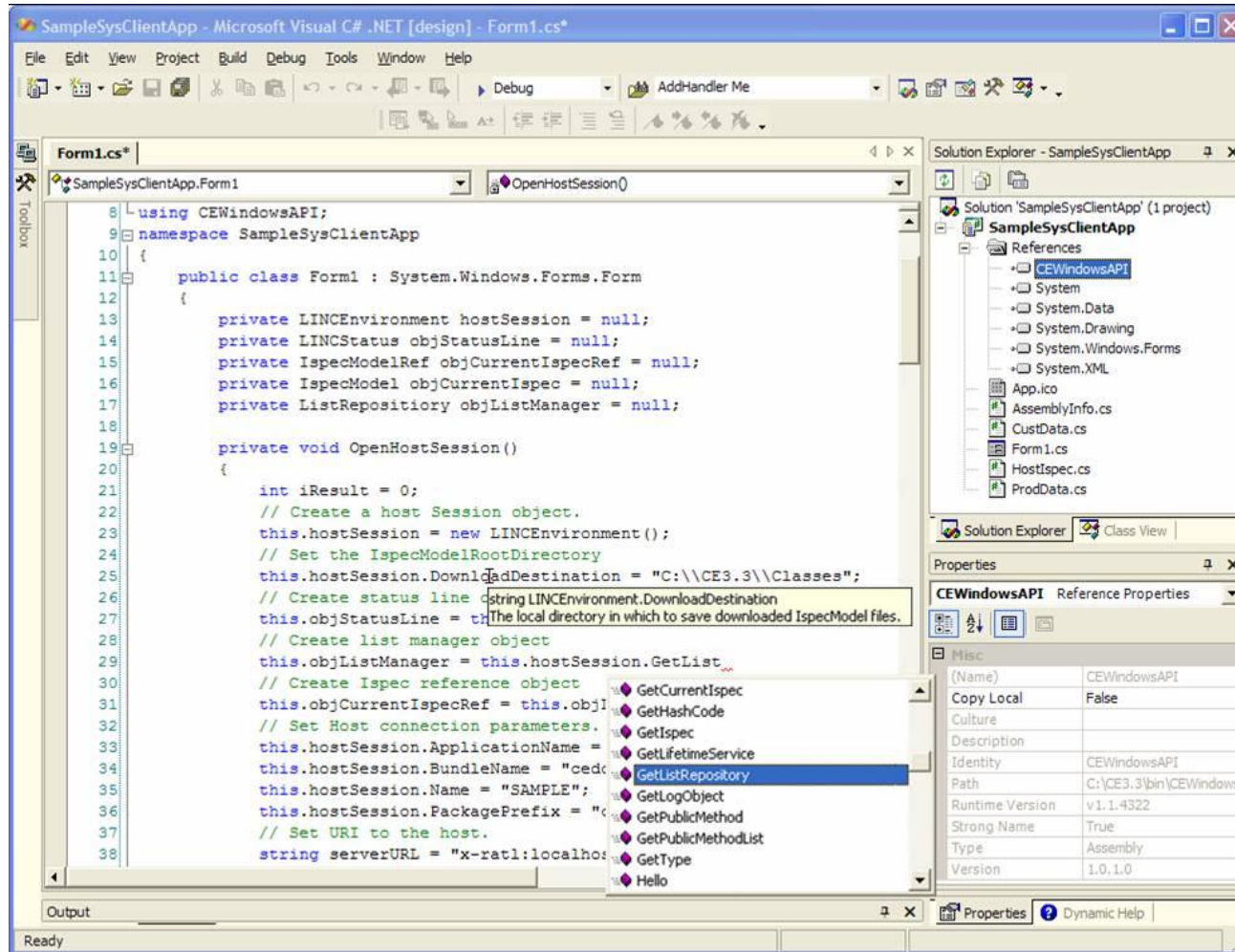
Component Enabler Windows API



Component Enabler Runtime Environment for the .NET Framework



Developing Component Enabler Clients in Visual Studio



Migrating Existing Clients to Use the Component Enabler for .NET Runtime

- ASP clients
 - Use the CEWindowsAPIJavaStyle interface
 - Change the Server.CreateObject call in global.asa
- VB 6 clients
 - Use the Java interface with some minor changes or use the CEWindowsAPI interface
 - Make required changes in the infrastructure files
- Web Services clients
 - Use the CEWindowsAPIJavaStyle interface
 - Change the Server.CreateObject call in global.asa.

IspecModel Files

- Parent for all IspecModels
- IspecModel object
 - Provides all the functionality of the corresponding system ispec
 - Contains all the field definitions of the system ispec
- Both Java and .NET framework versions of these files may be generated
- .NET Framework versions of the files are all prefixed with the <system name>_
- .NET Framework versions of the files are automatically compiled into corresponding DLL's

Summary

- Component Enabler is an interface that is used by client applications to access the host EAE or AB Suite systems.
- Component Enabler offers three .NET generators:
 - ASP.NET WebForms Generator
 - VB.NET WinForms Generator
 - ASP.NET Web Services Generator
- Existing clients can migrate to use the .NET Framework Runtime environment with minor changes.
- Component Enabler allows you to take advantage of the new technology user interface capabilities offered by the .NET Framework.