



Sohag University
Faculty of Medicine
Histology
Department

Practical Histology



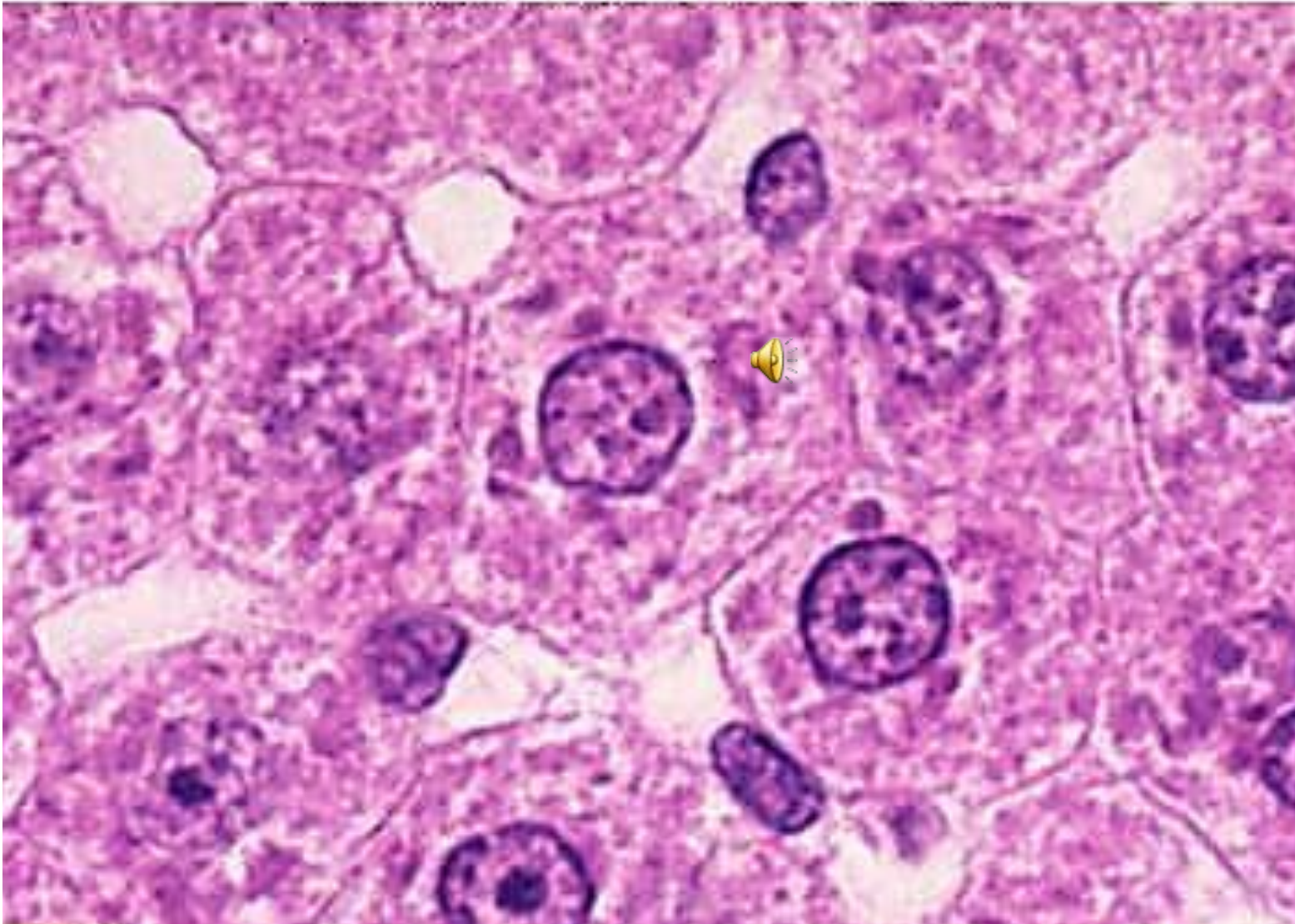
By

Prof : Doha Saber Mohamed

The cell



Vesicular nucleus in liver cells



Golgi body in epidydemis

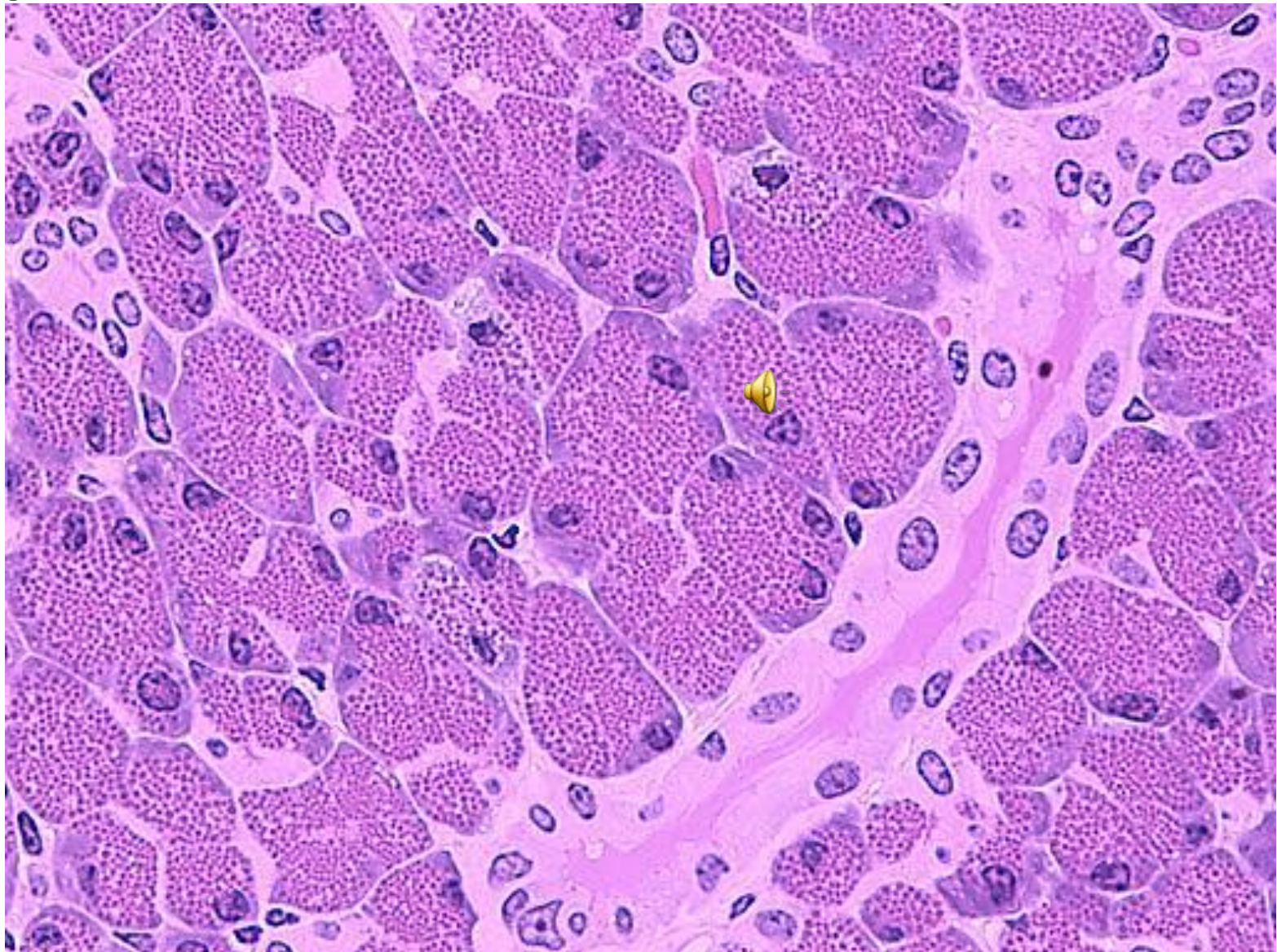


Golgi bodies in Epididymis

← Golgi bodies



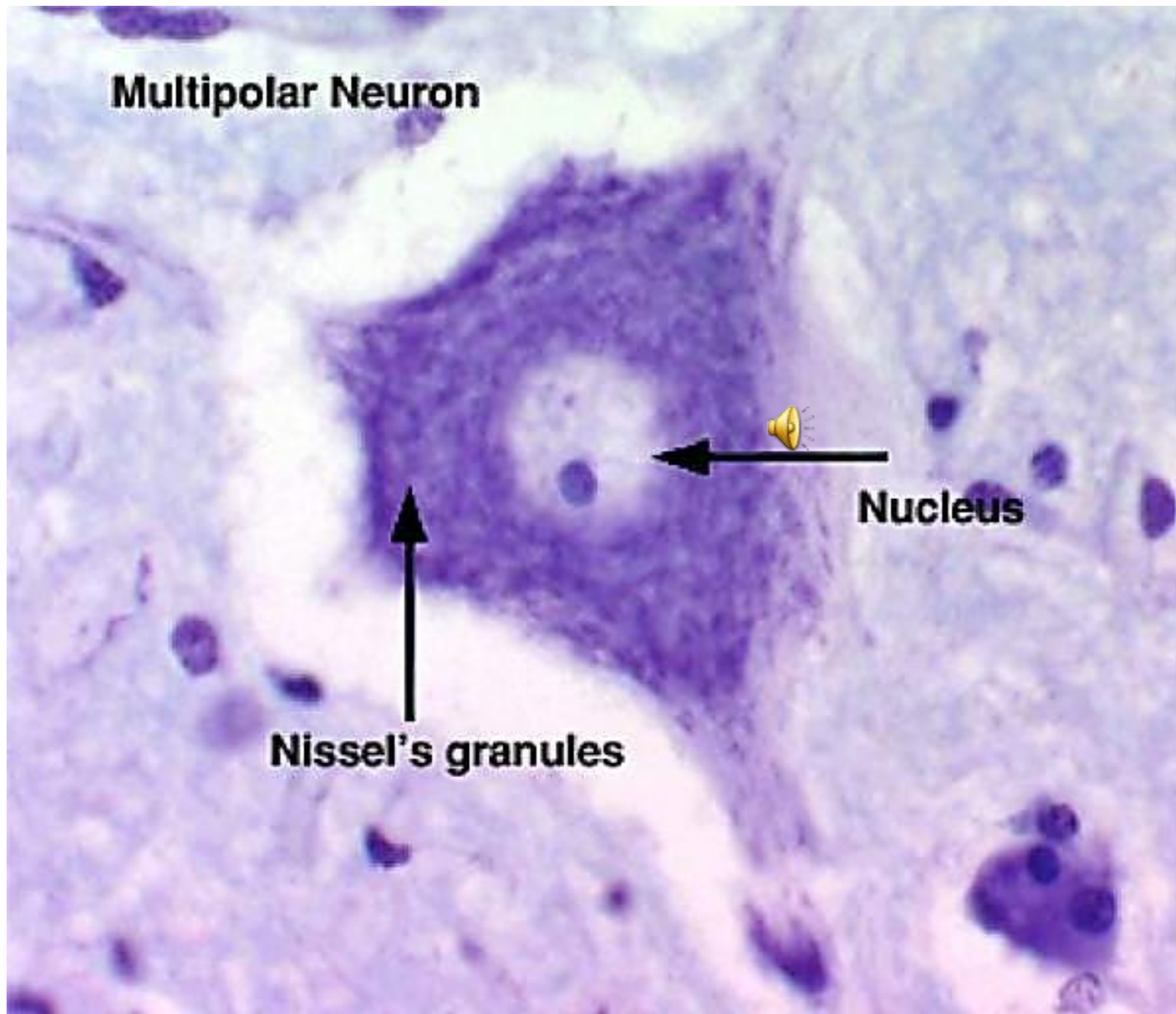
Rough endoplasmic reticulum in pancreatic acini



Name: Nissl granules

Site: Nerve cells

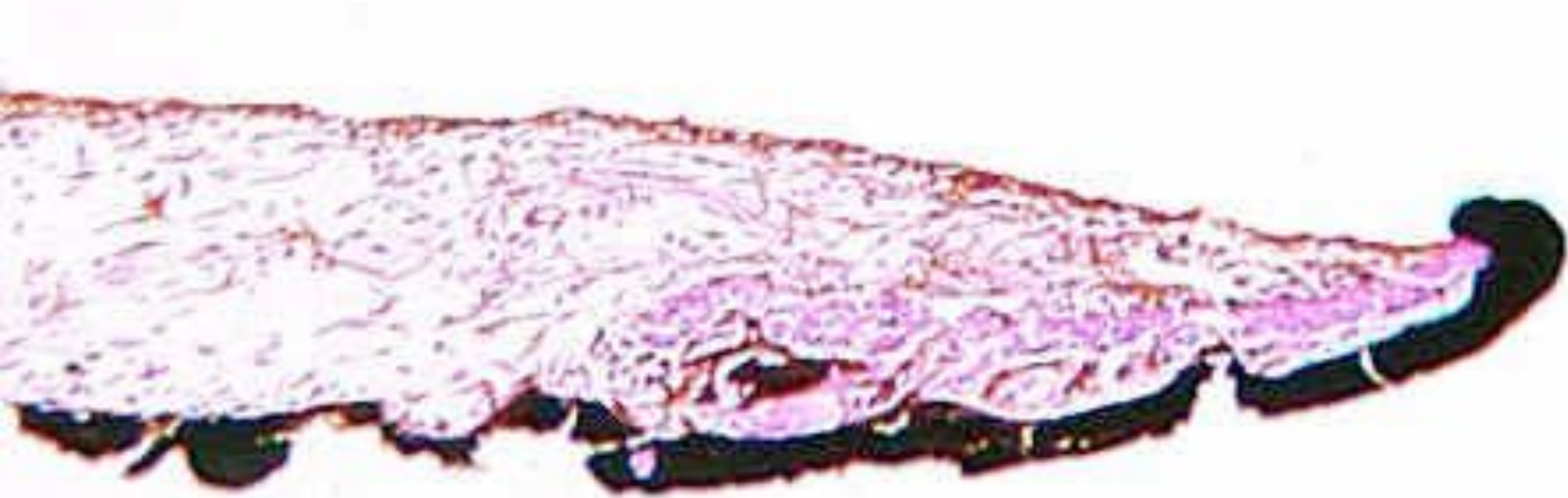
Stain: Toluidine blue



Name :Melanin pigments

Site: Iris

Stain:H &E



Fat cell by H&E



Fat Globules

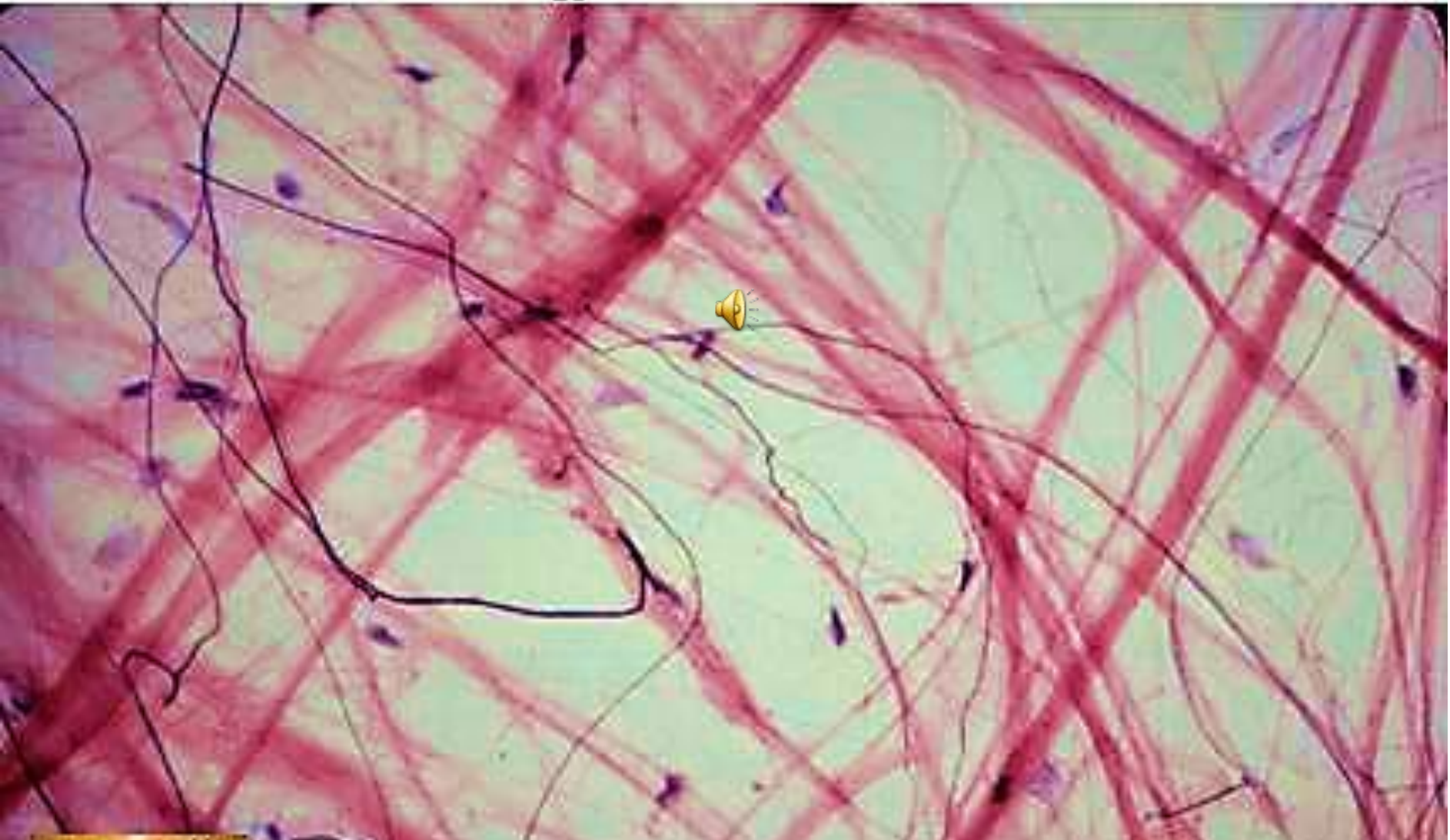
By sudan black



2- Connective tissue

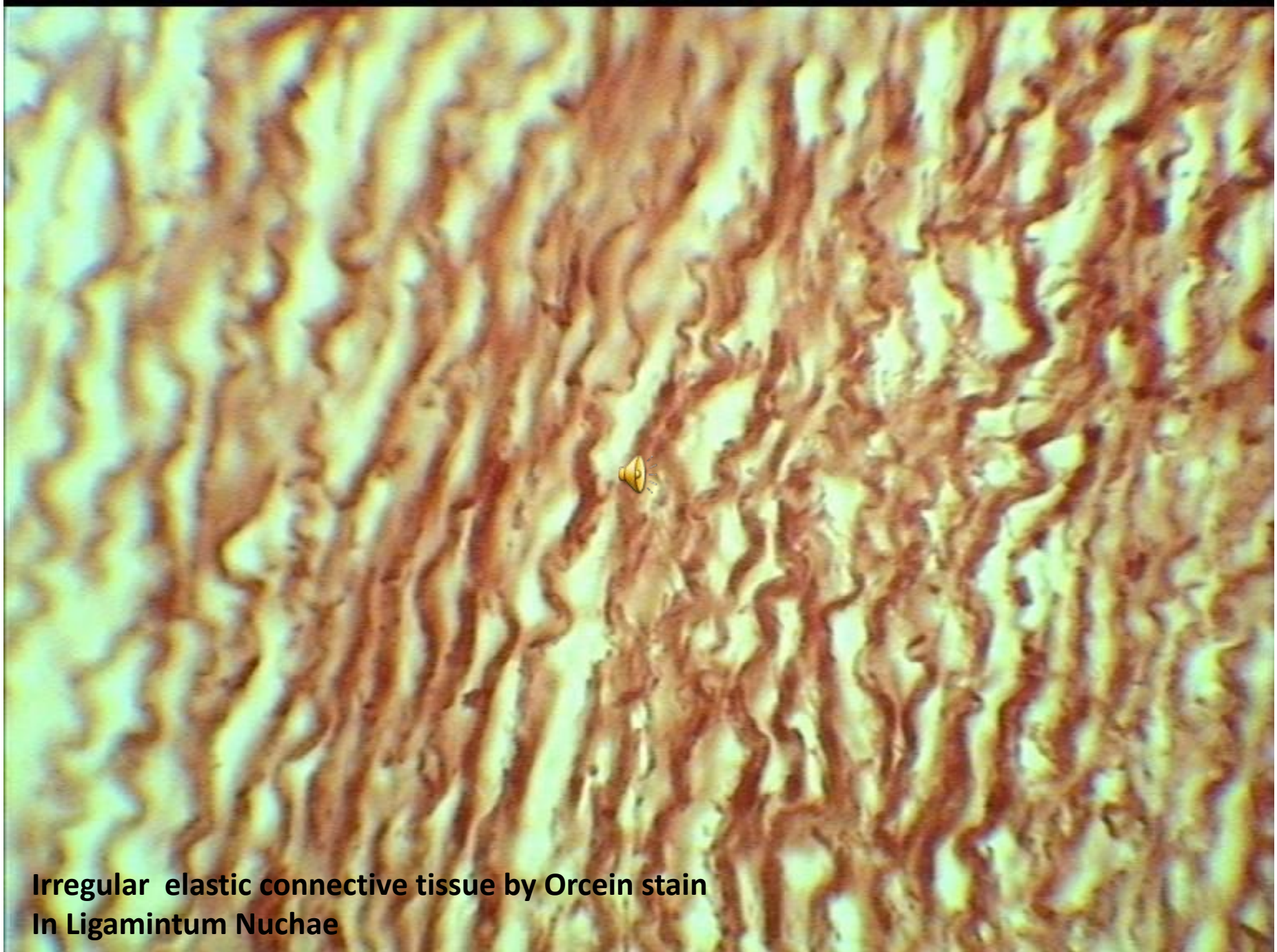


Loose areolar Connective Tissue



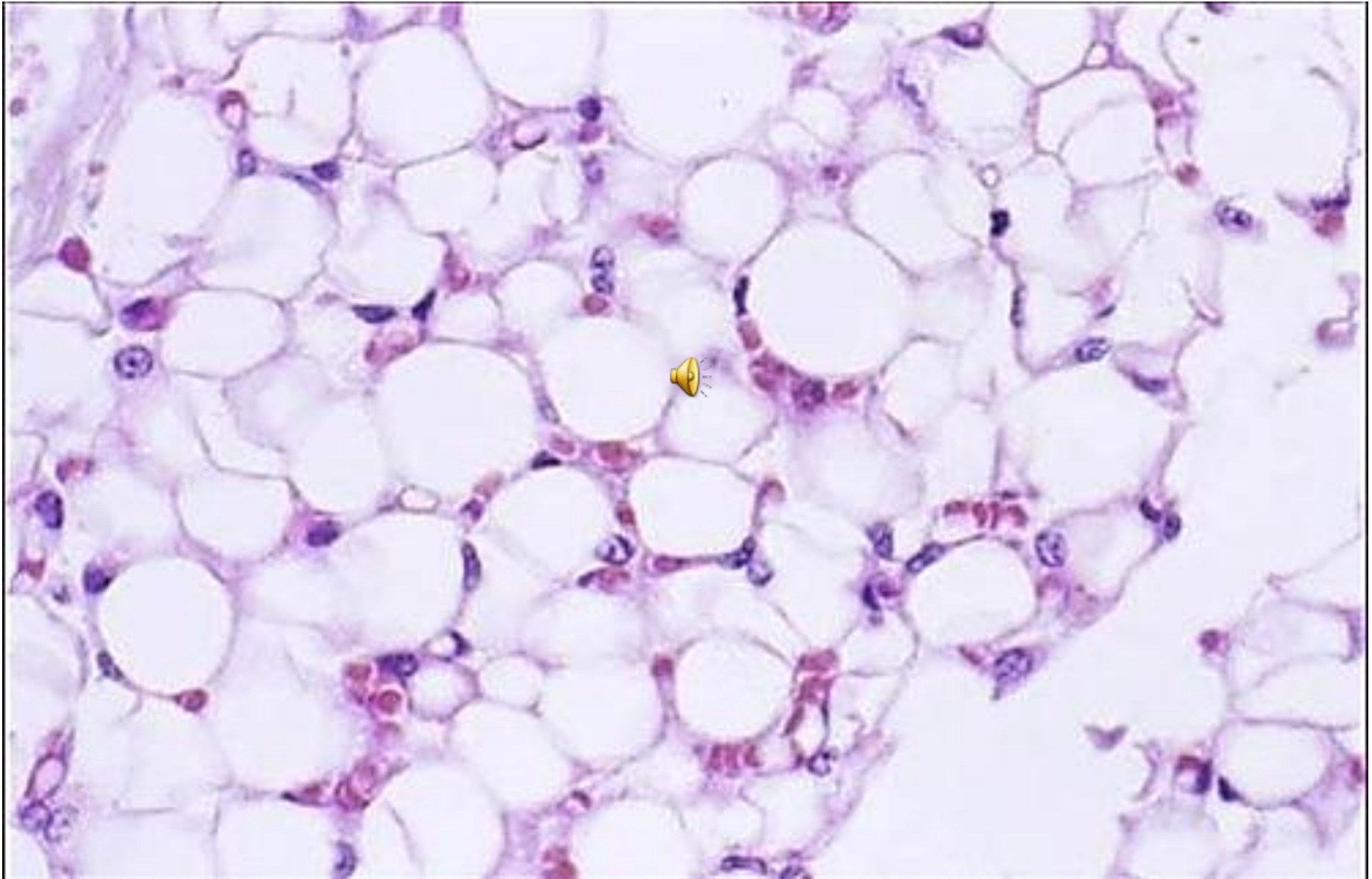
Irregular elastic connective tissue by Orcein stain In aorta





**Irregular elastic connective tissue by Orcein stain
In Ligamintum Nuchae**

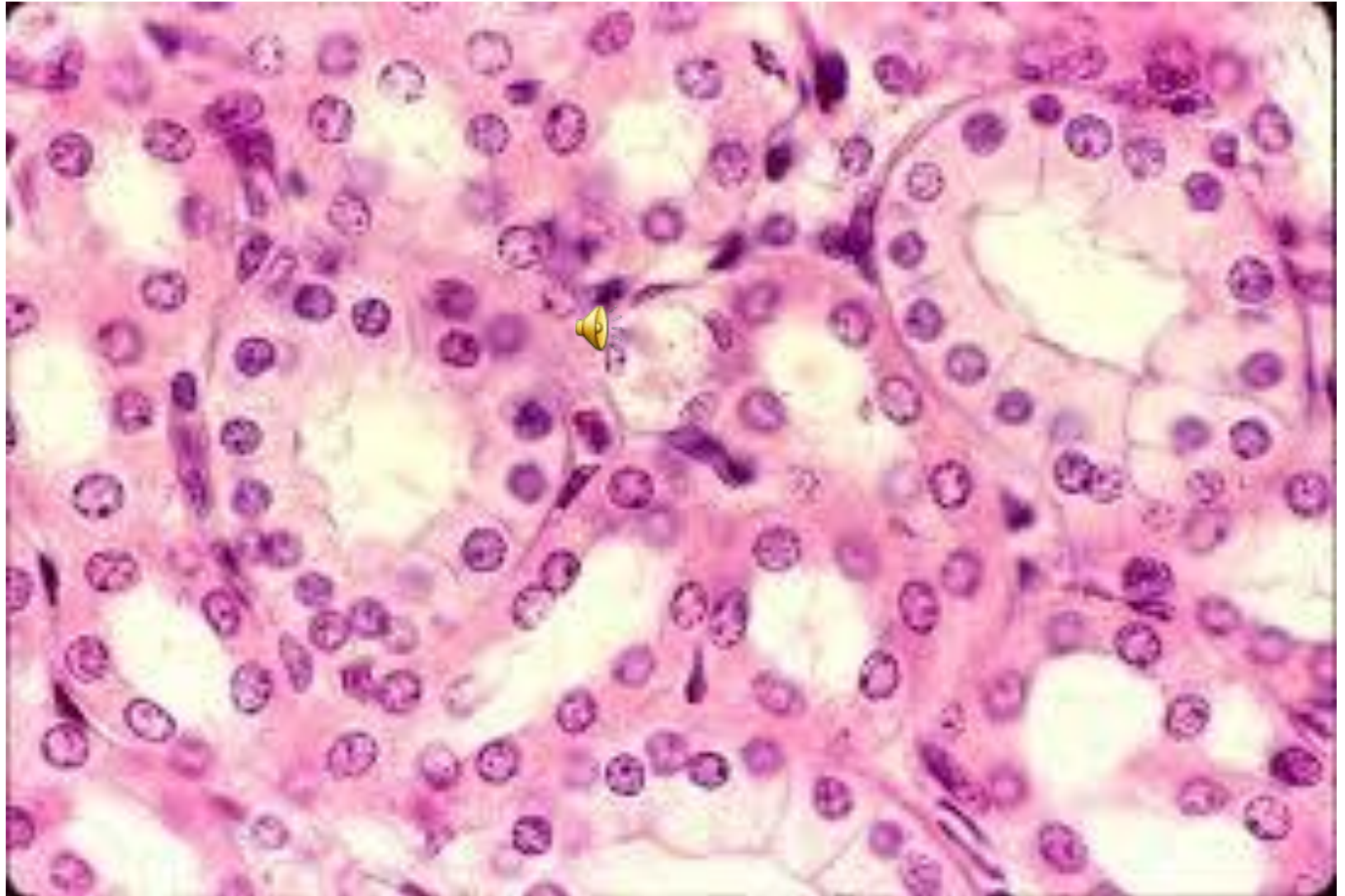
Adipose C.T



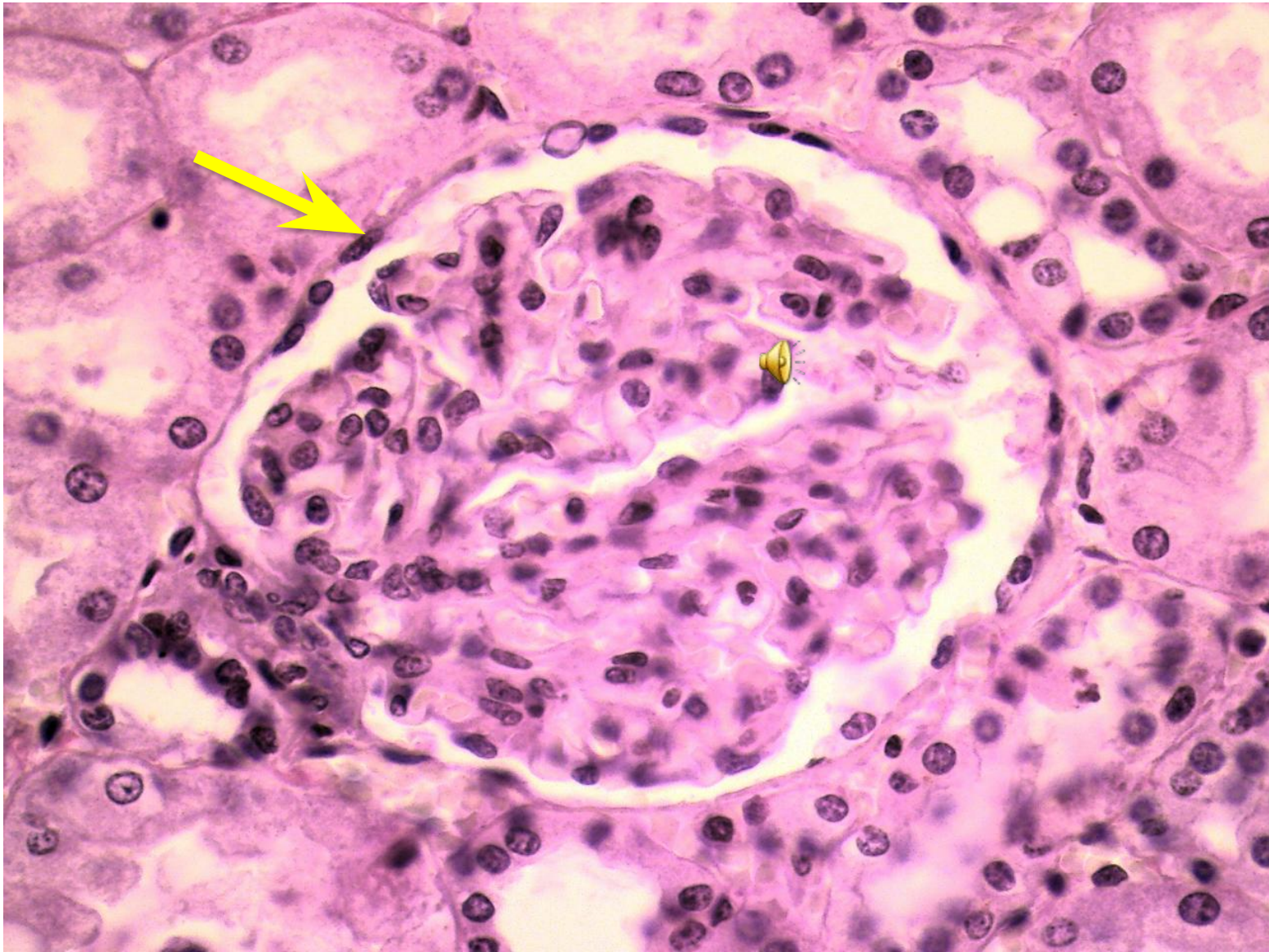
Epithelium



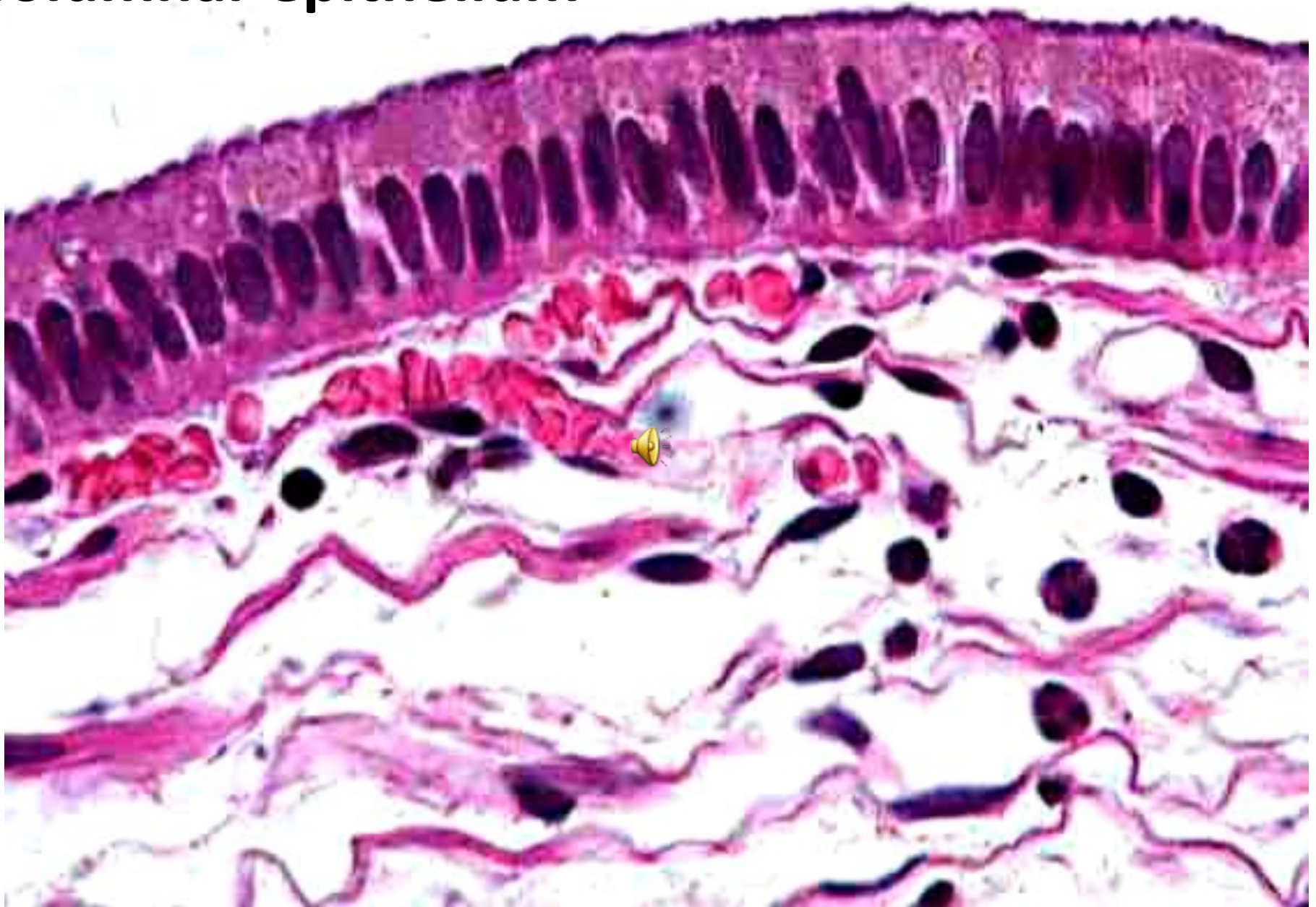
Cuboidal epithelium



Simple squamous epithelium



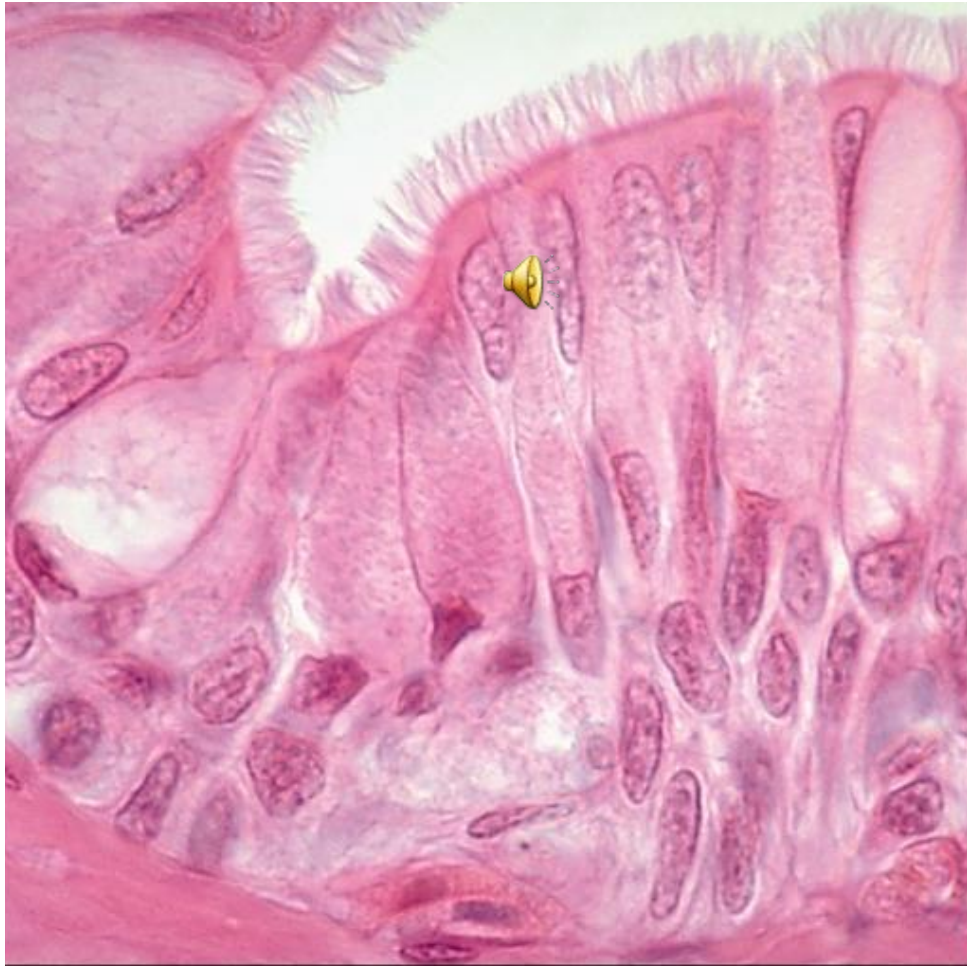
Columnar epithelium



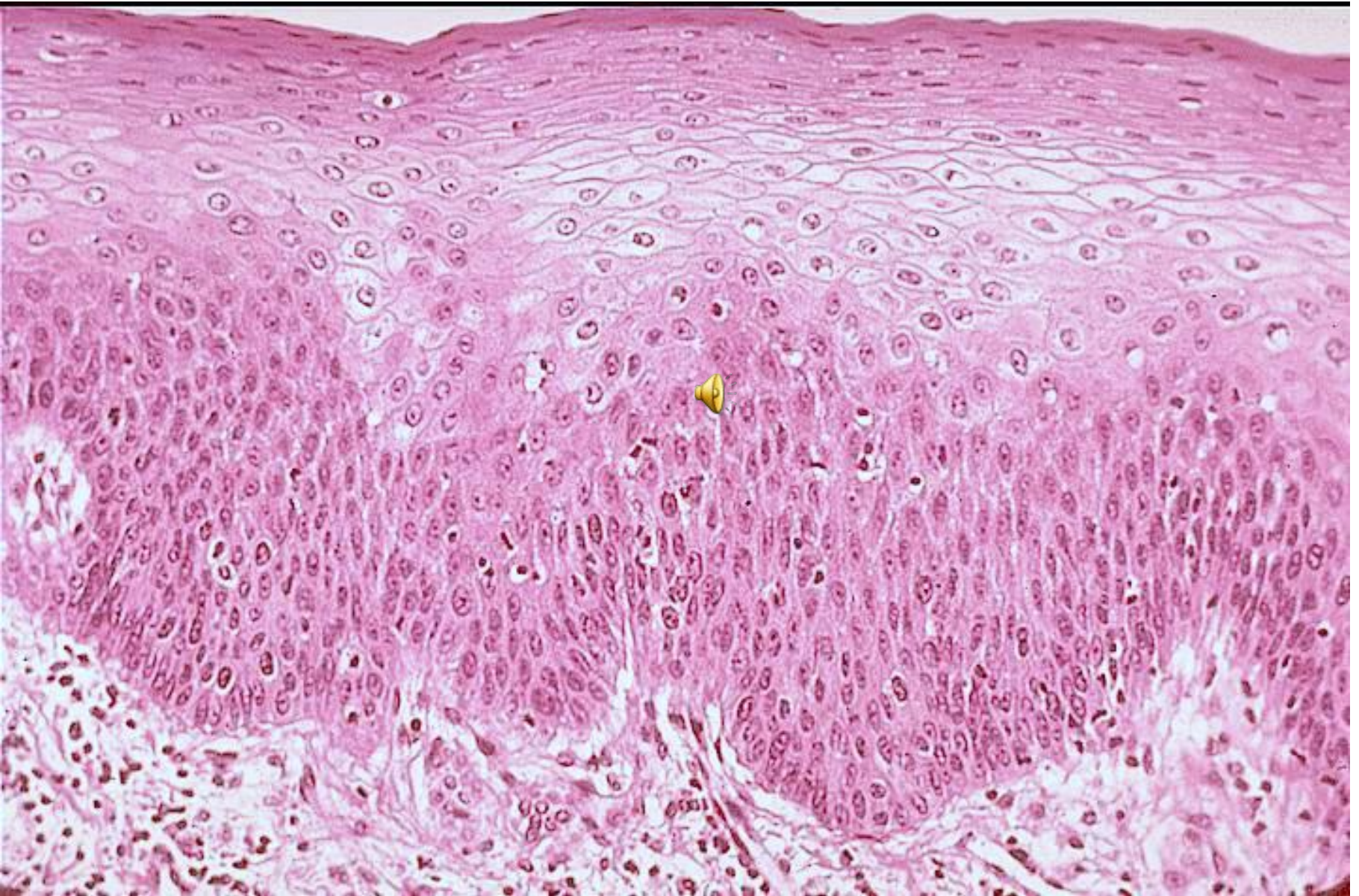
Columnar epithelium with goblet cells



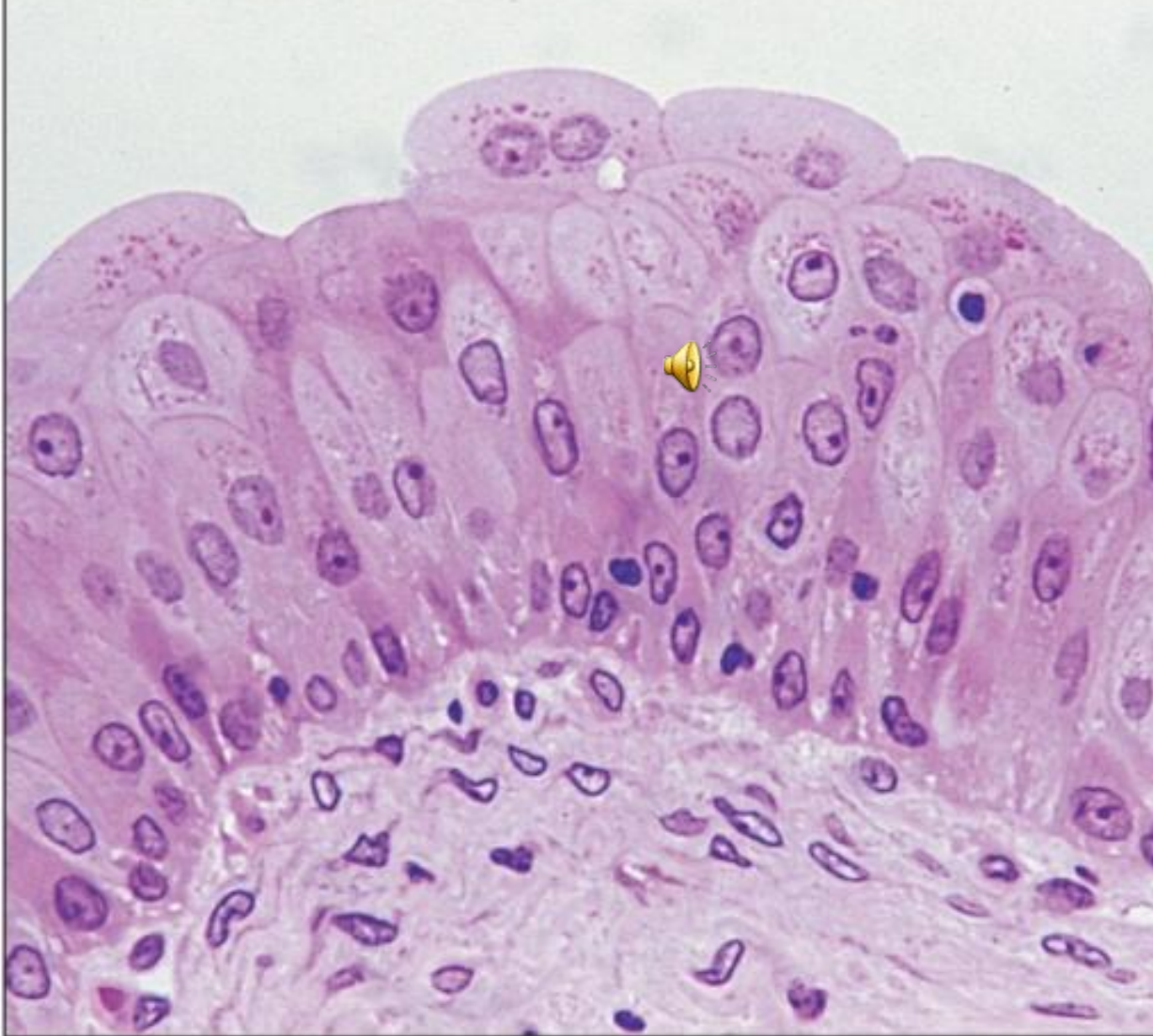
Ciliated pseudostratified Columnar epithelium with goblet cells



Stratified squamous epithelium



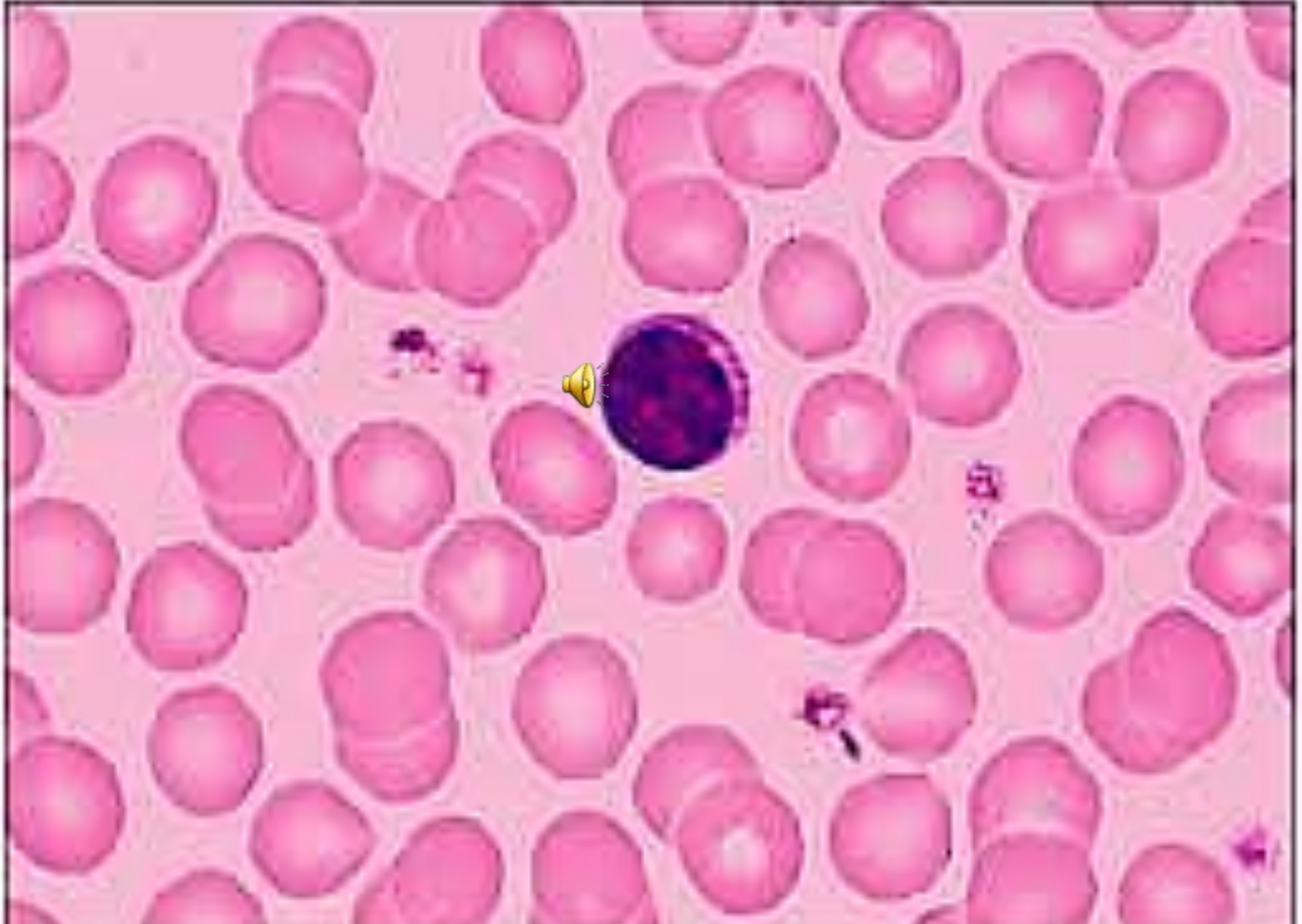
Transitional epithelium



Blood



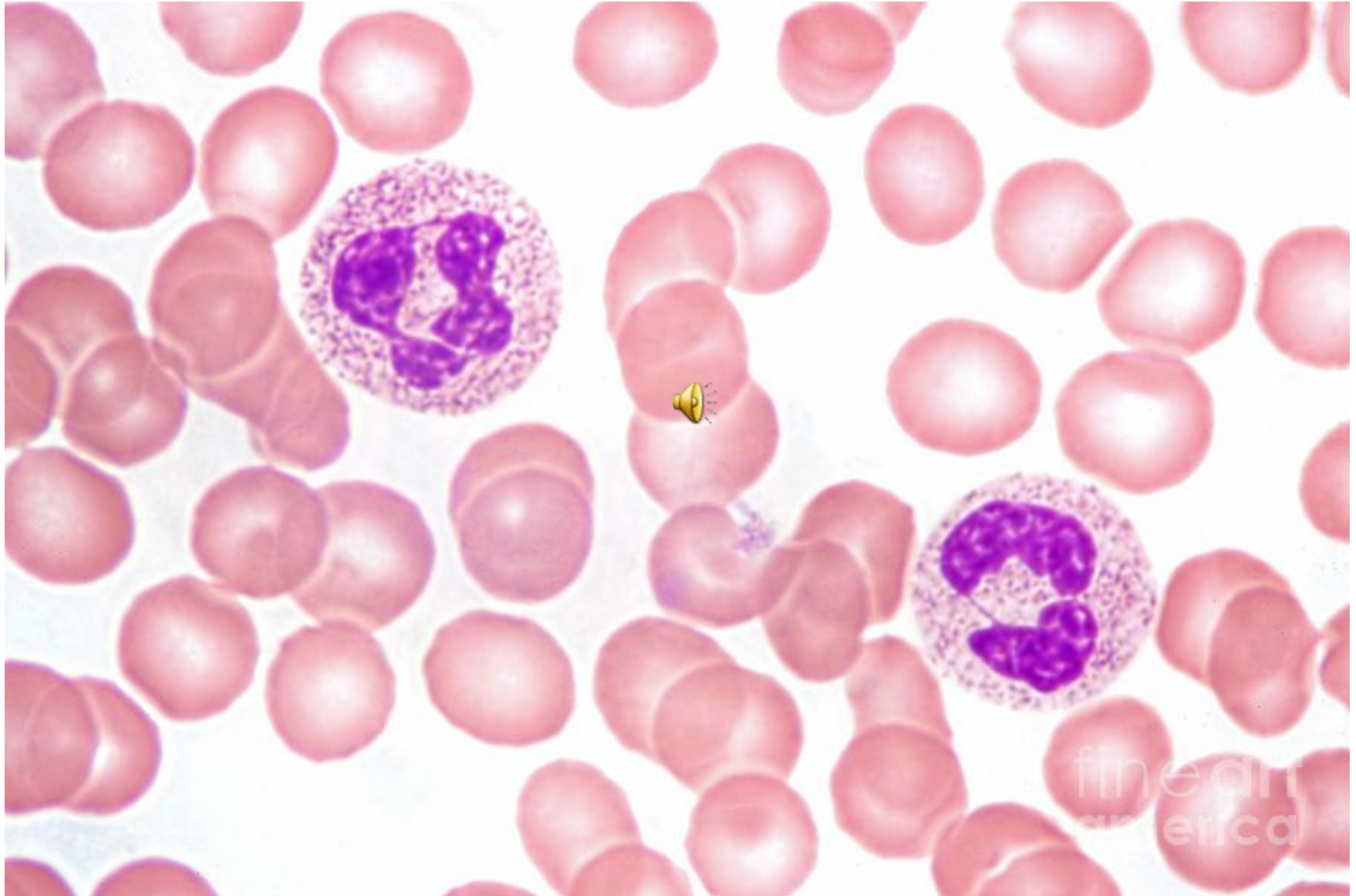
Blood film lymphocyte



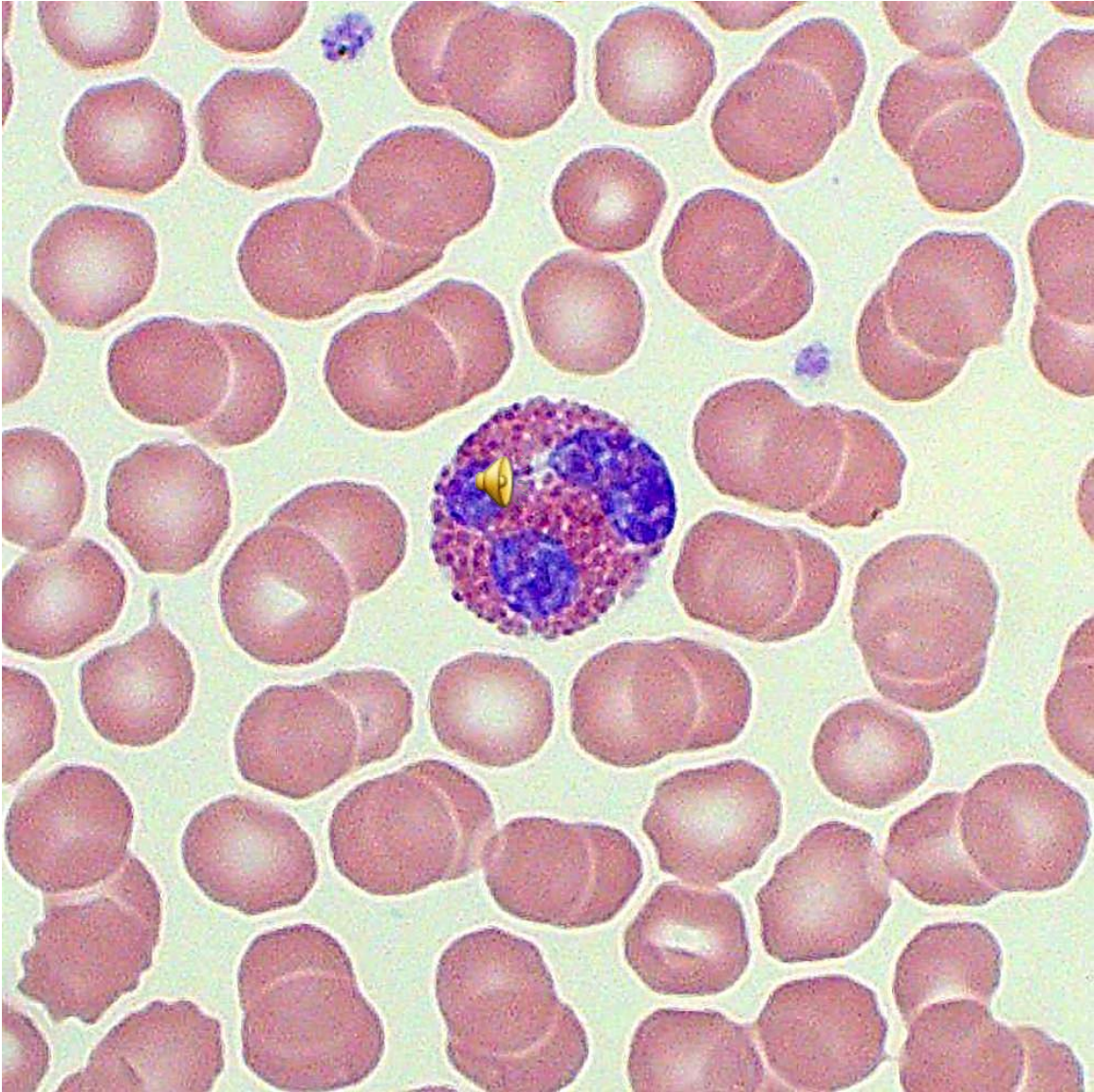
Blood film monocyte



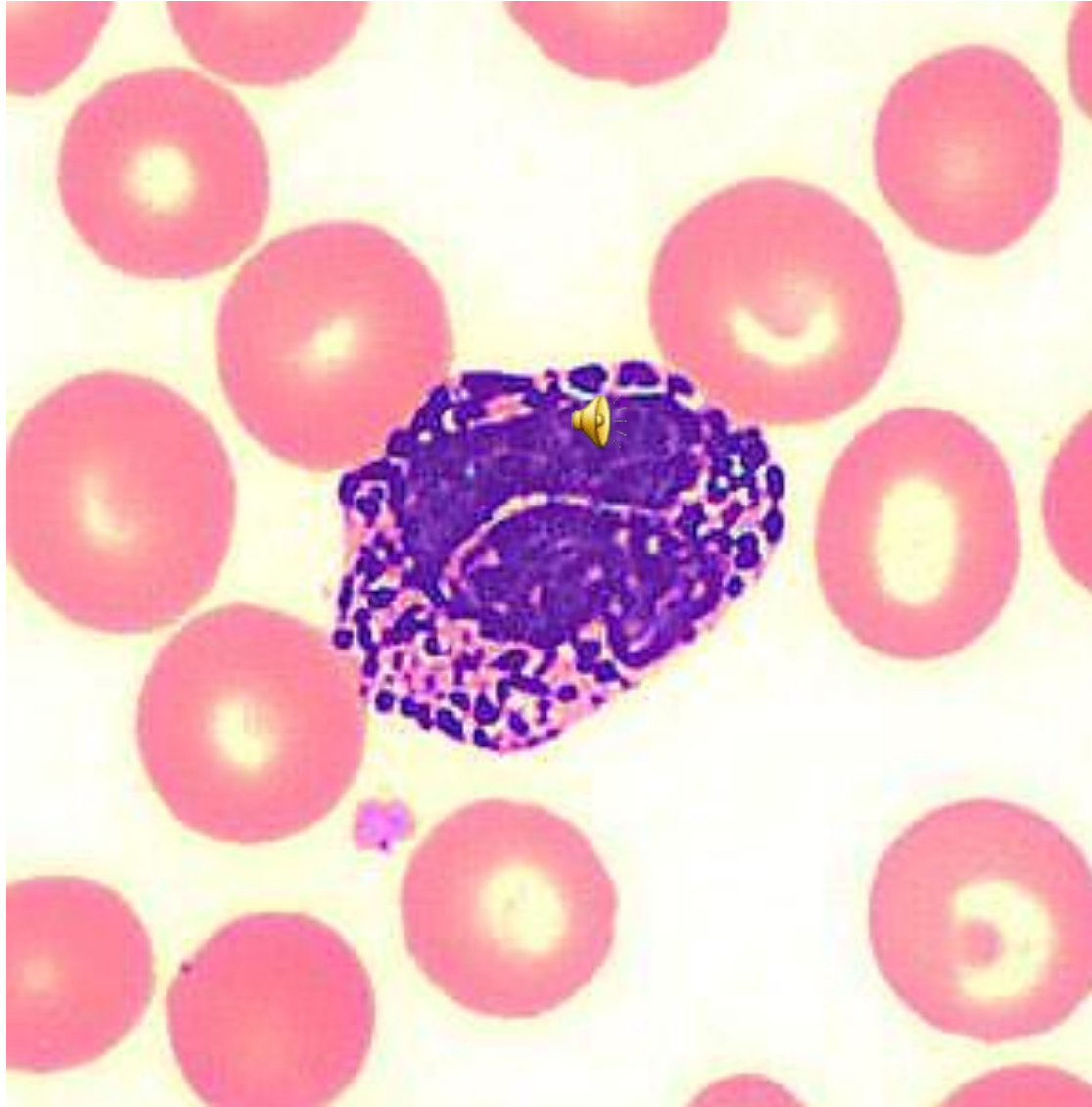
Blood film neutrophils



Blood film eosinophil



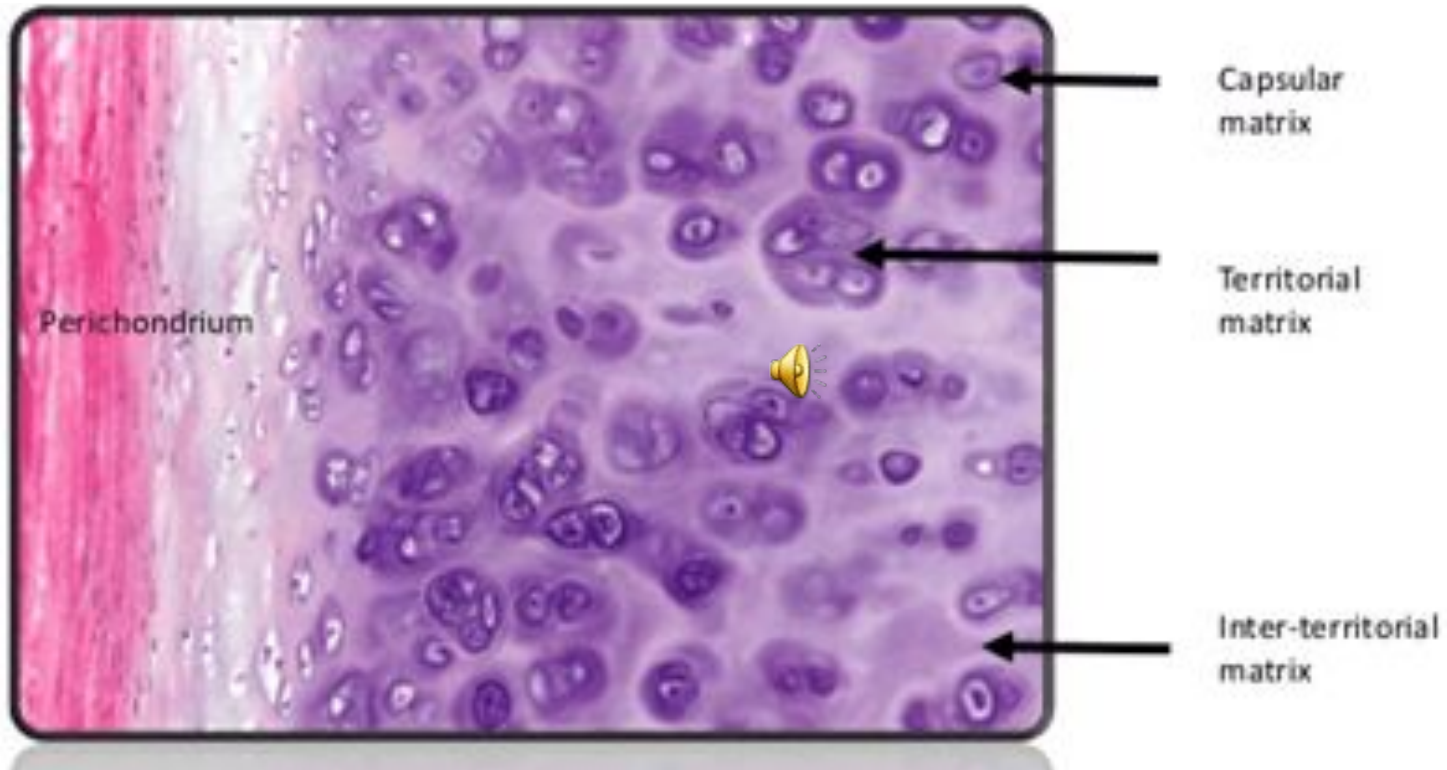
Blood film basophil



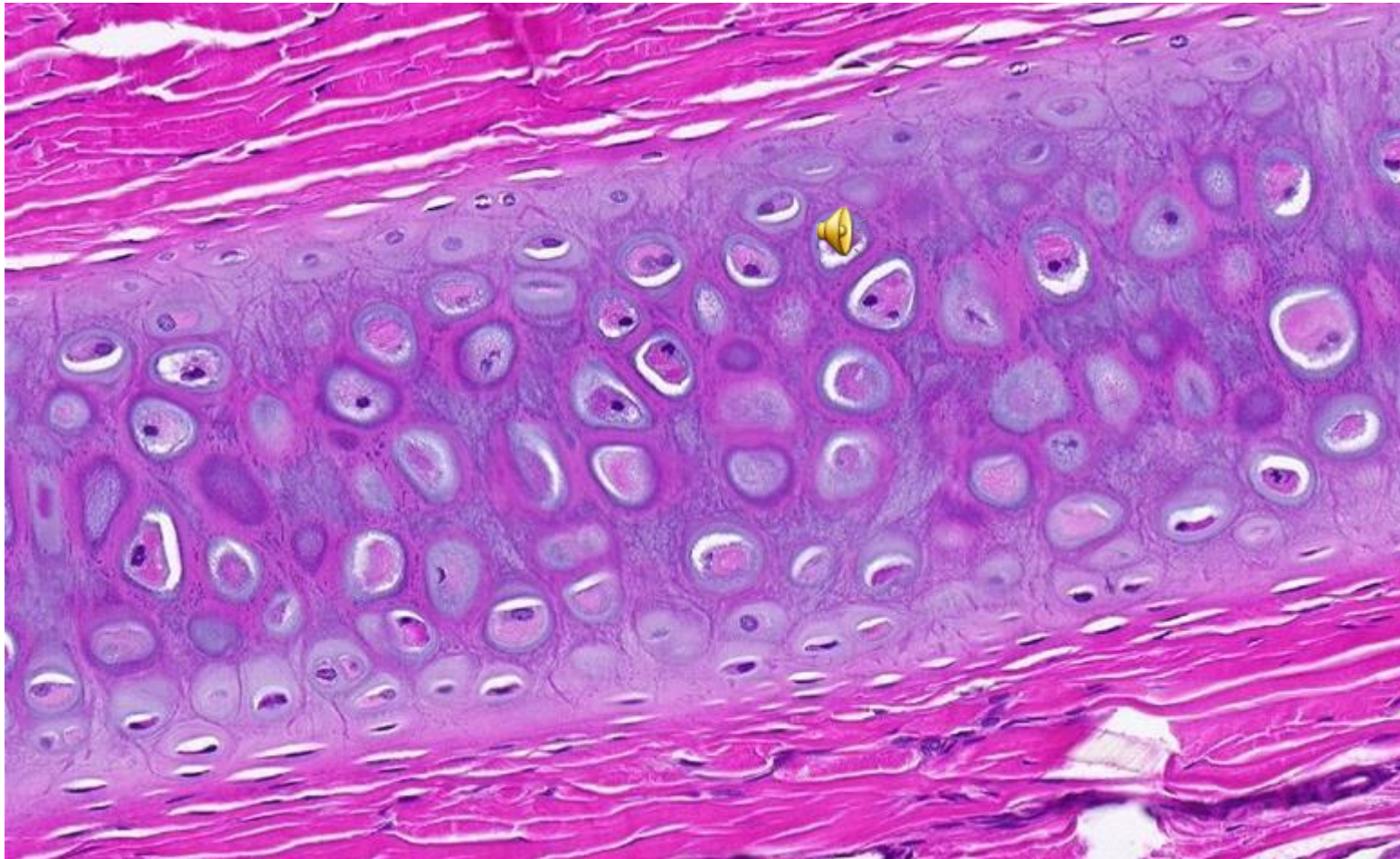
Cartilage



Hyaline cartilage



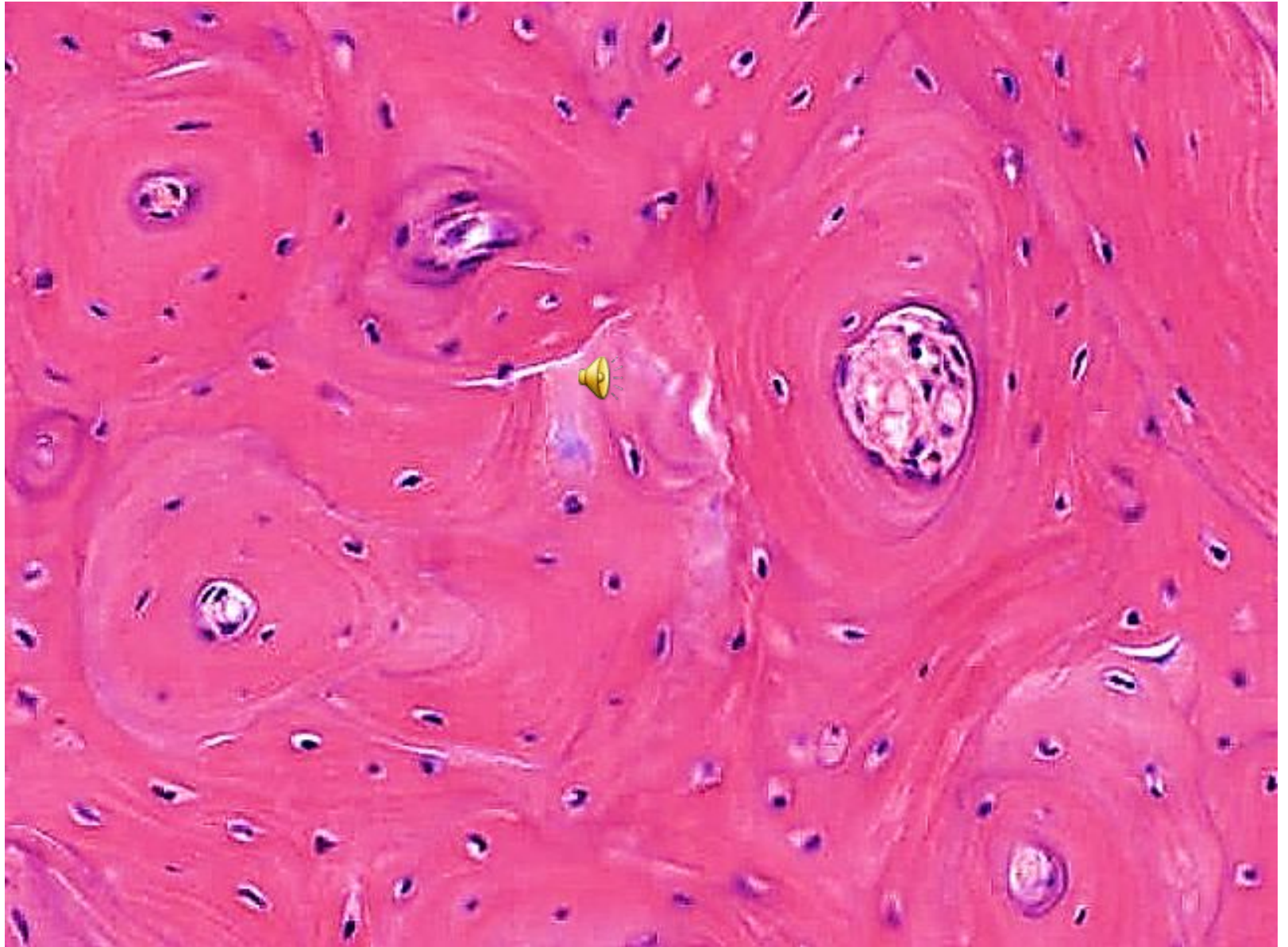
Elastic cartilage



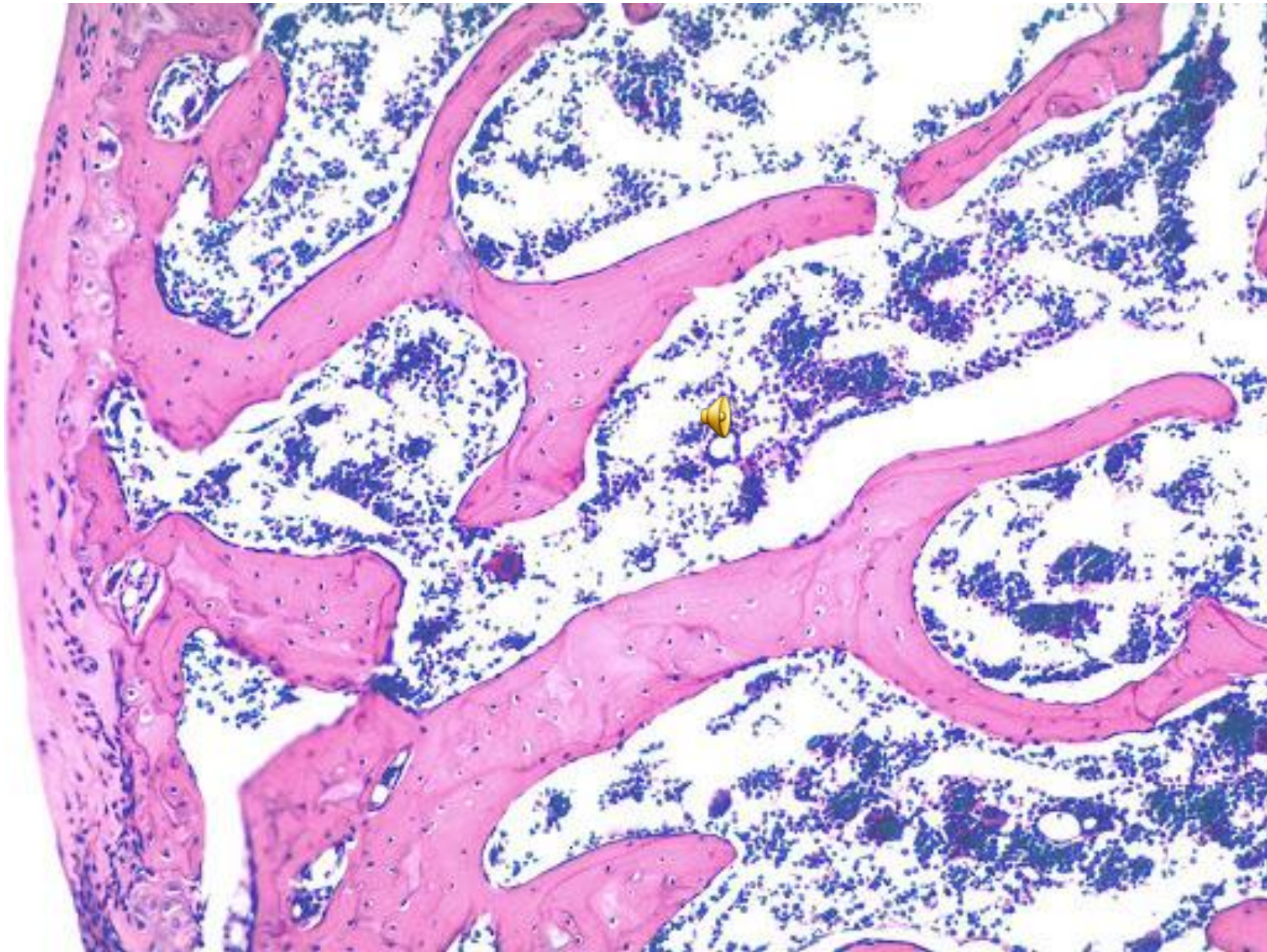
Bone



Compact bone

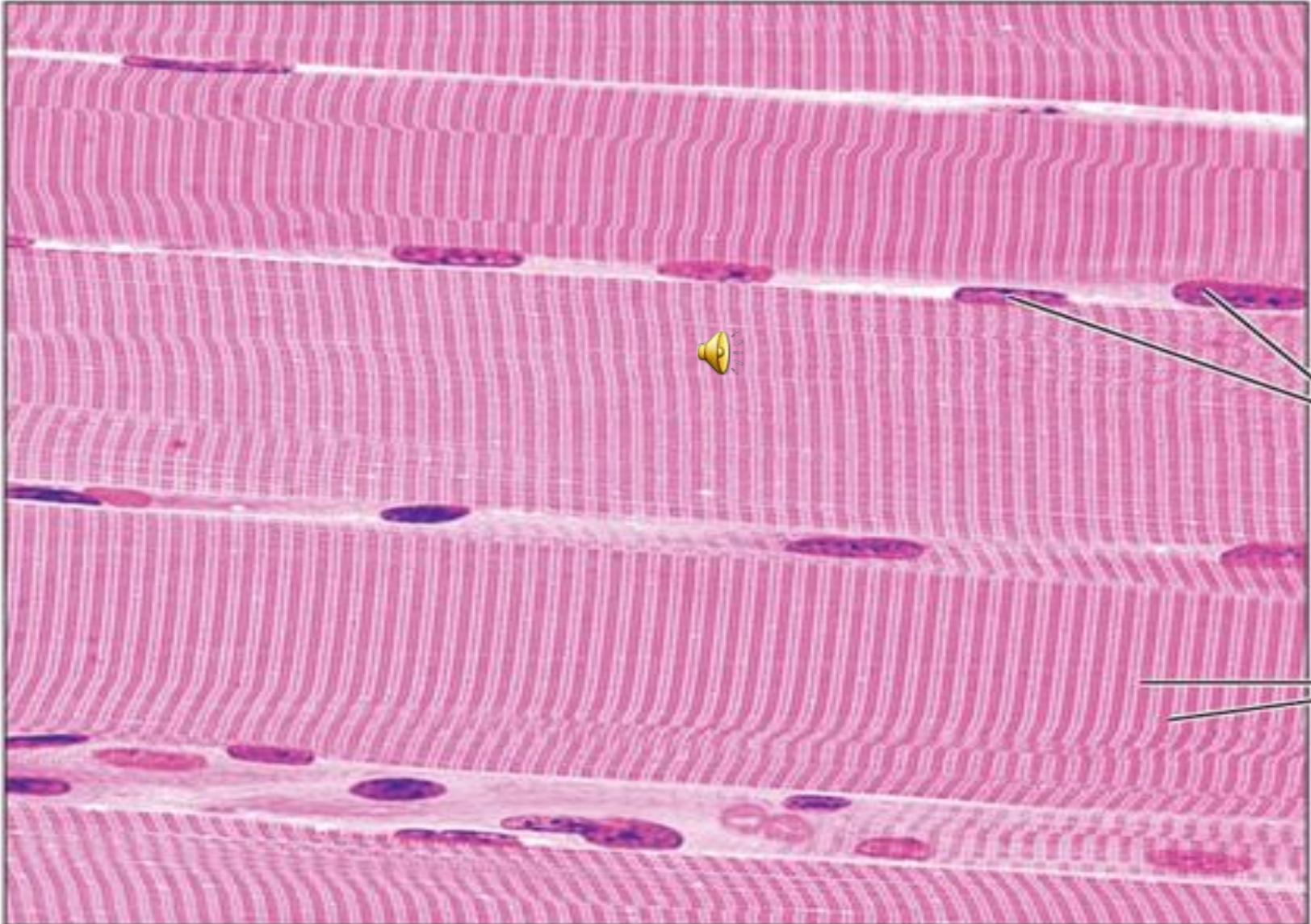


Cancellous bone

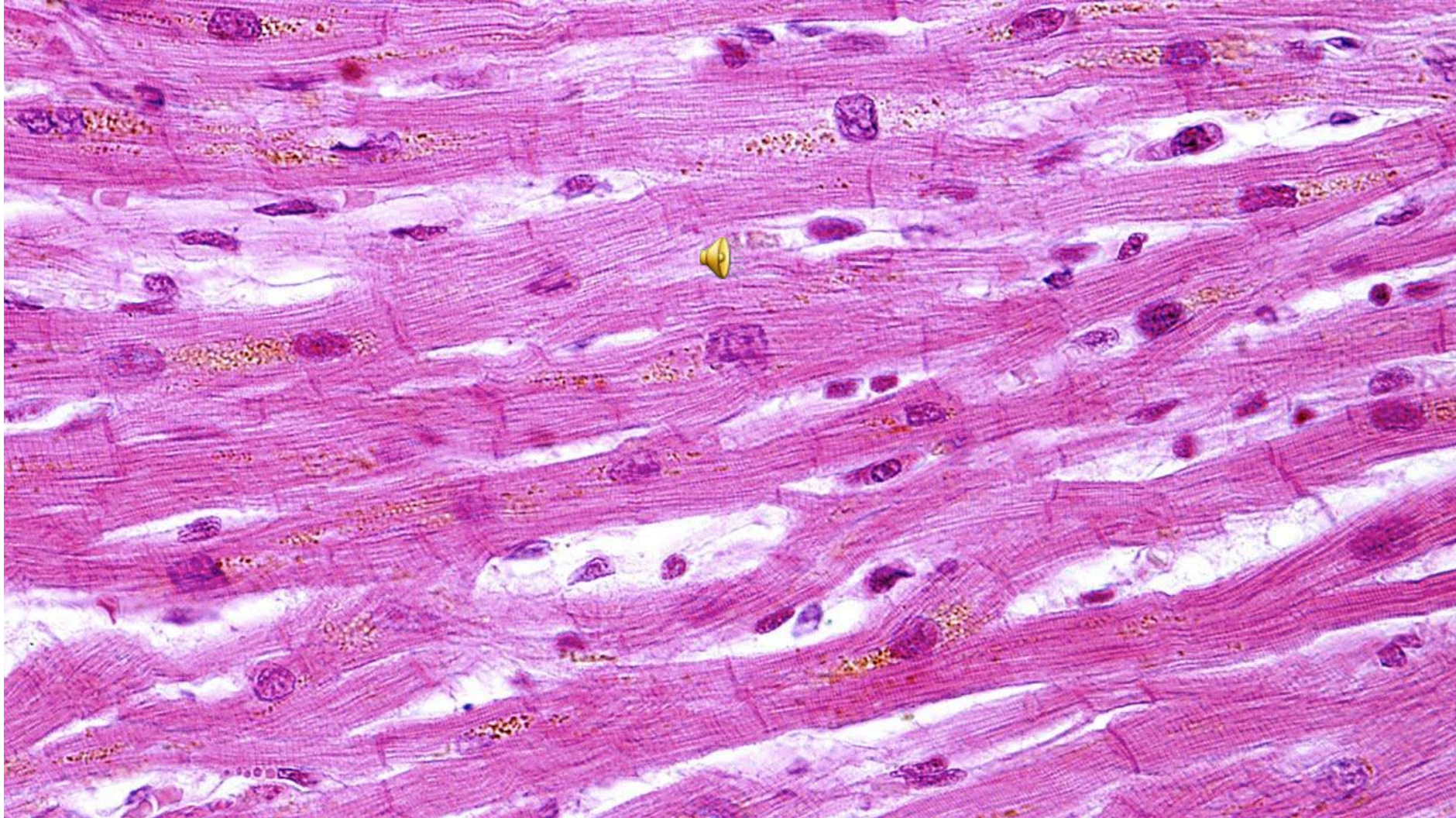


Muscular  tissue

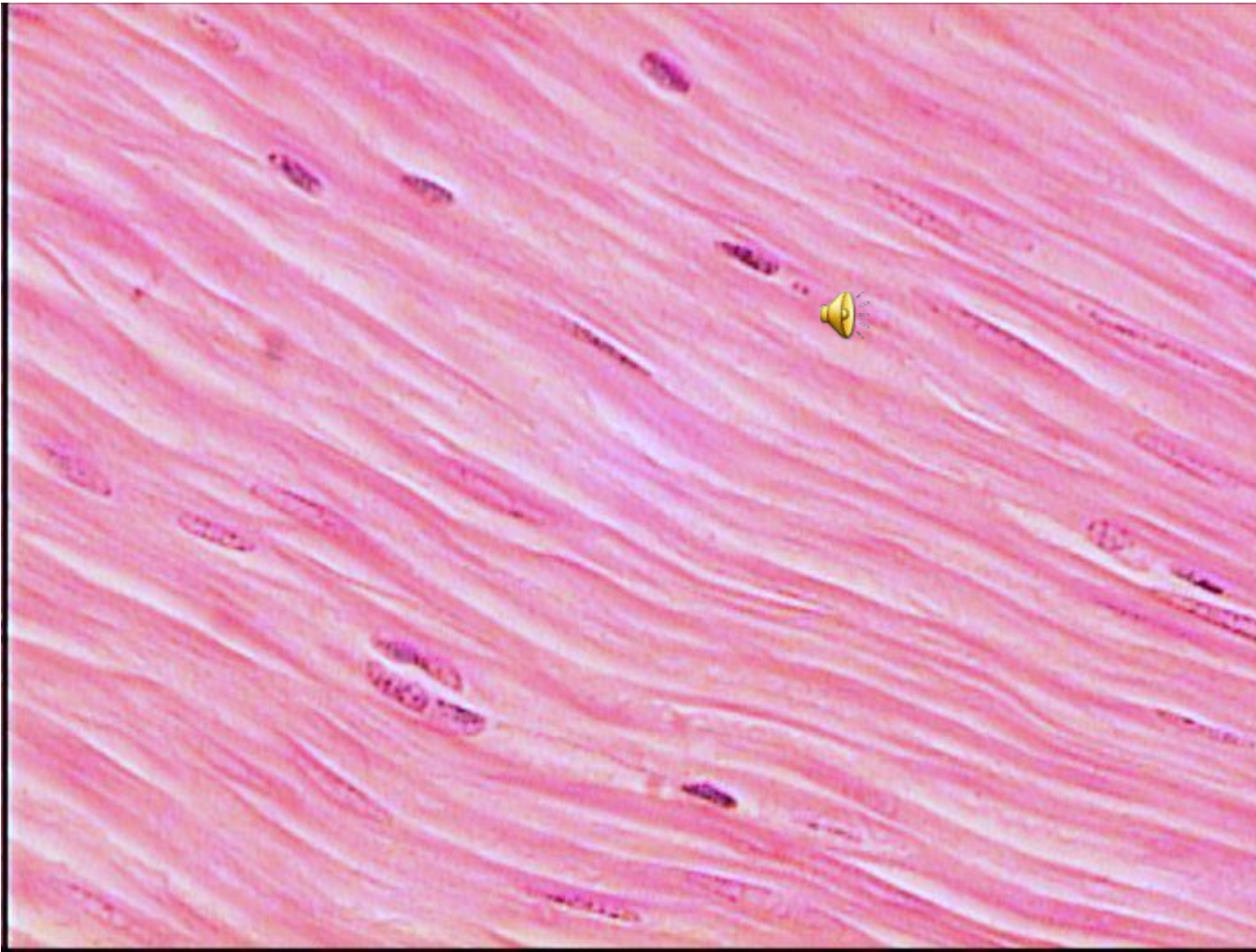
Skeletal muscles



Cardiac muscles



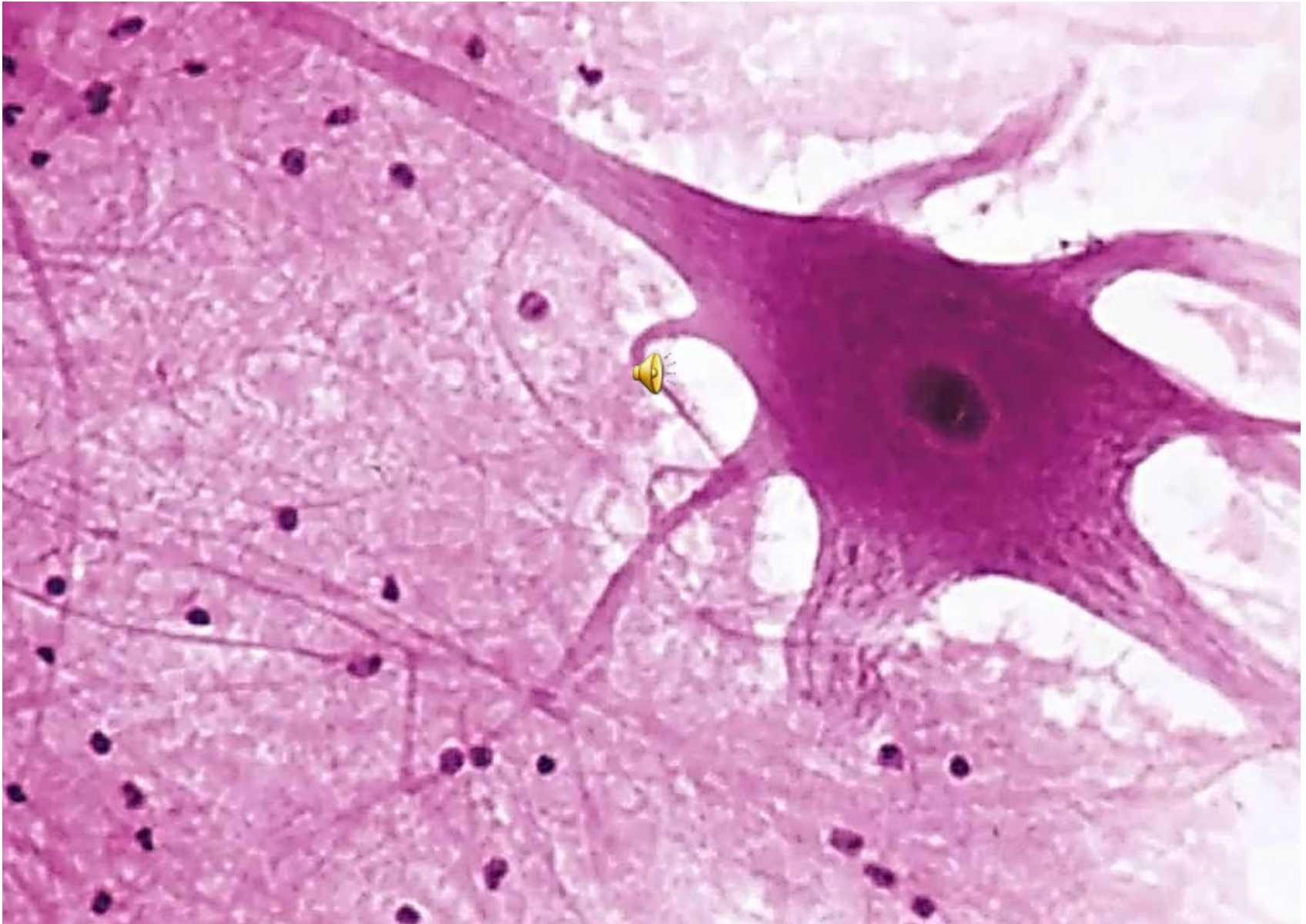
Smooth muscles



Nervous tissue



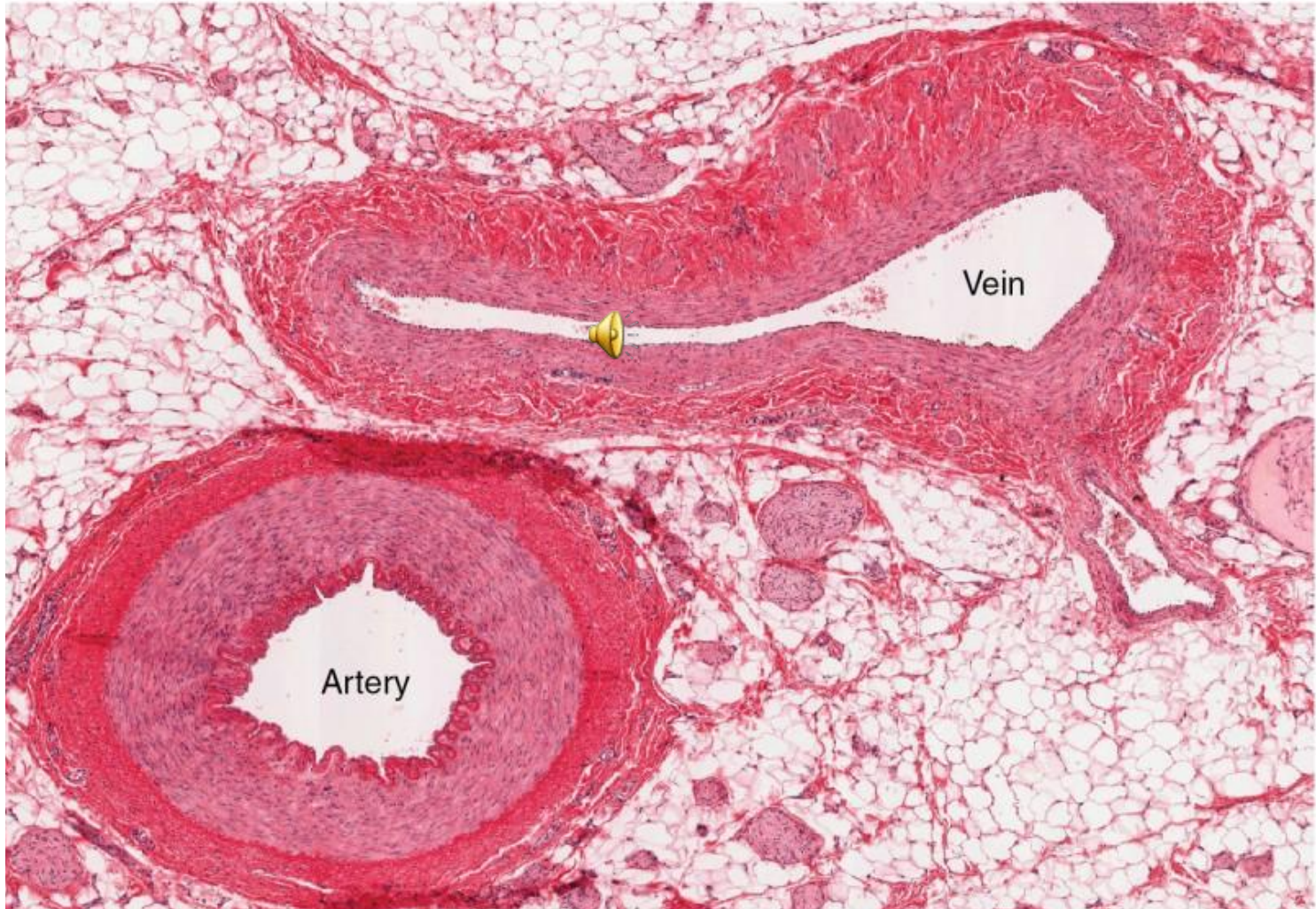
Nerve cell



Vascular system

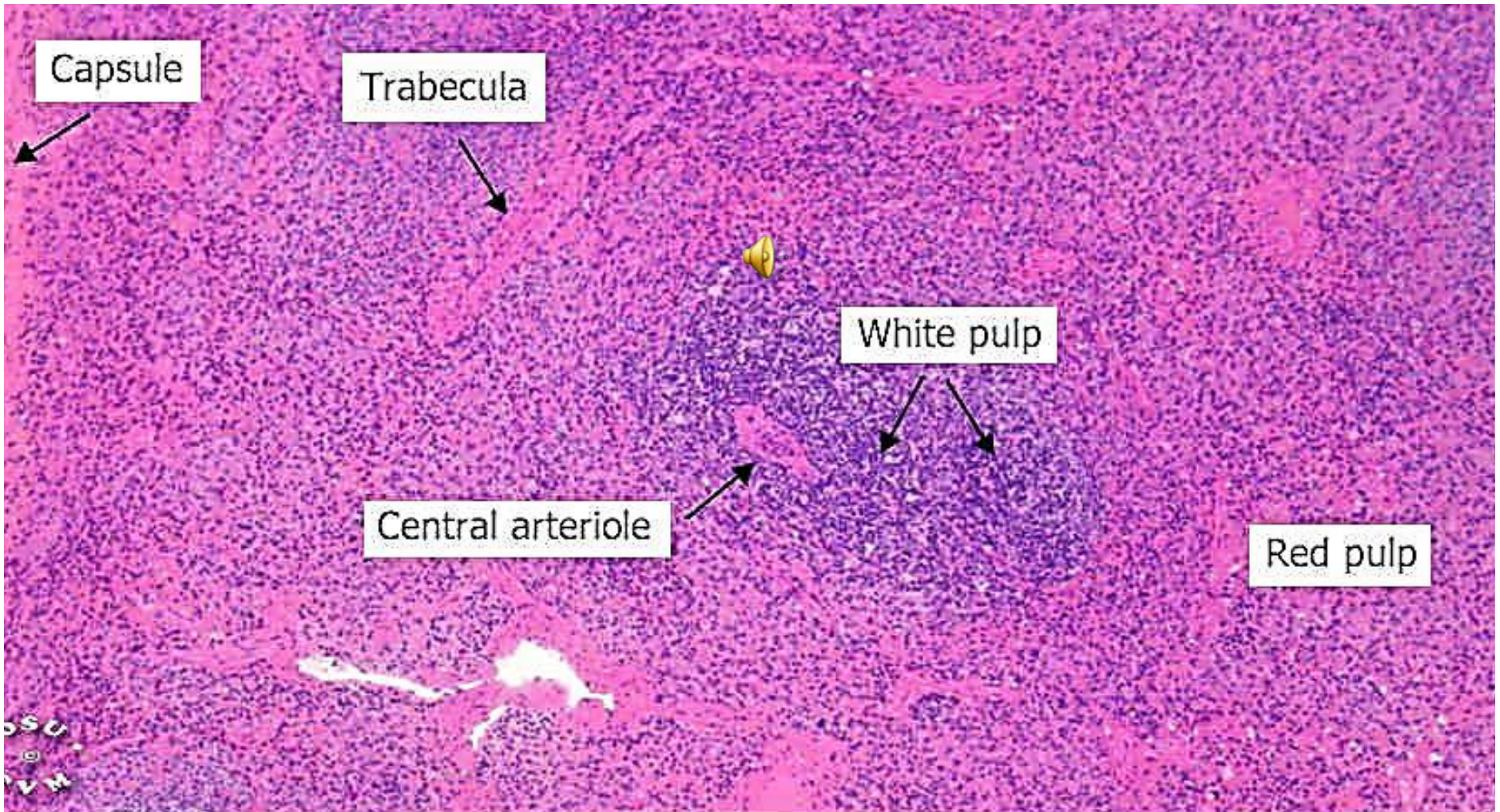


Medium sized artery and vein



Lymphatic  system

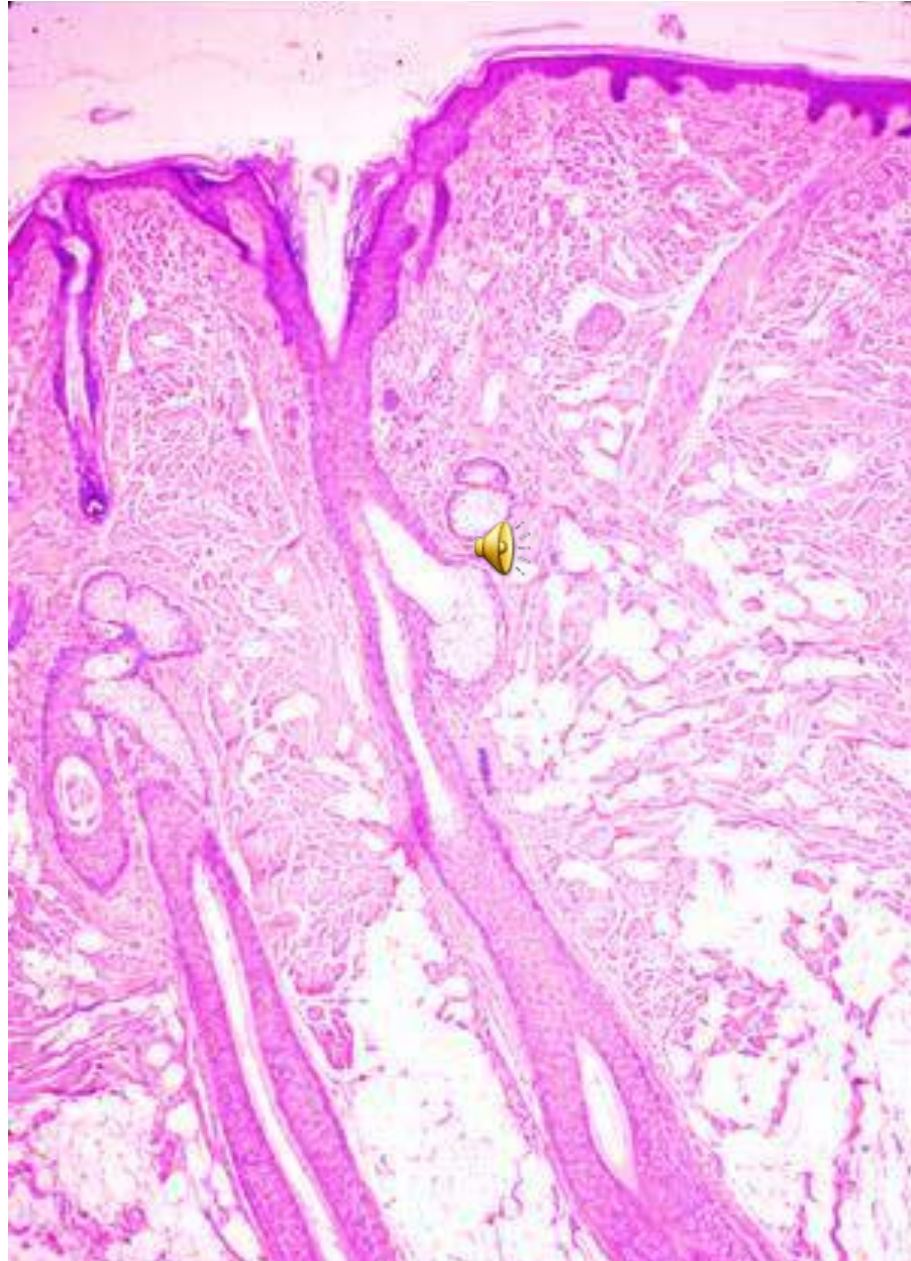
Spleen



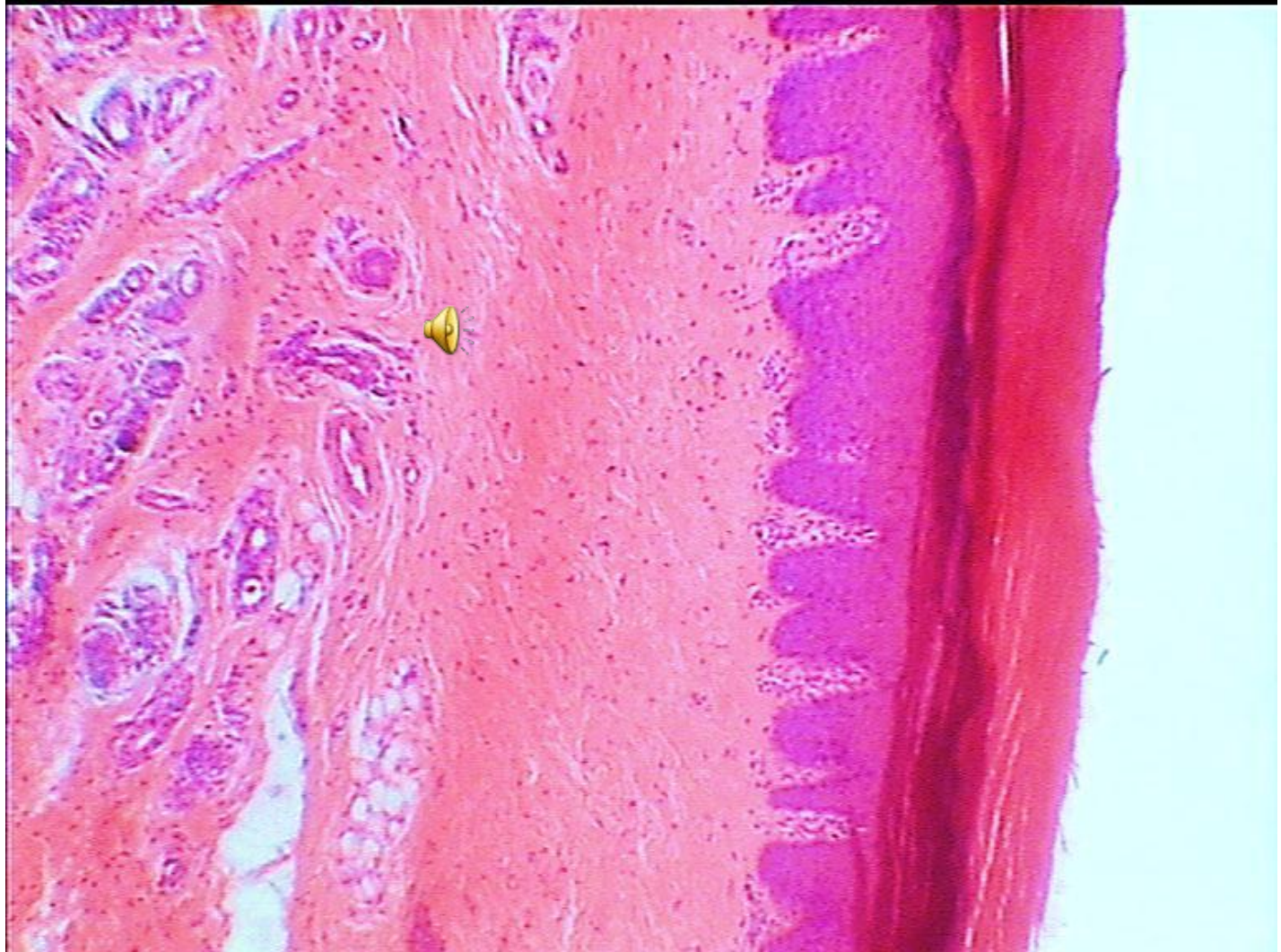
Skin



Thin skin



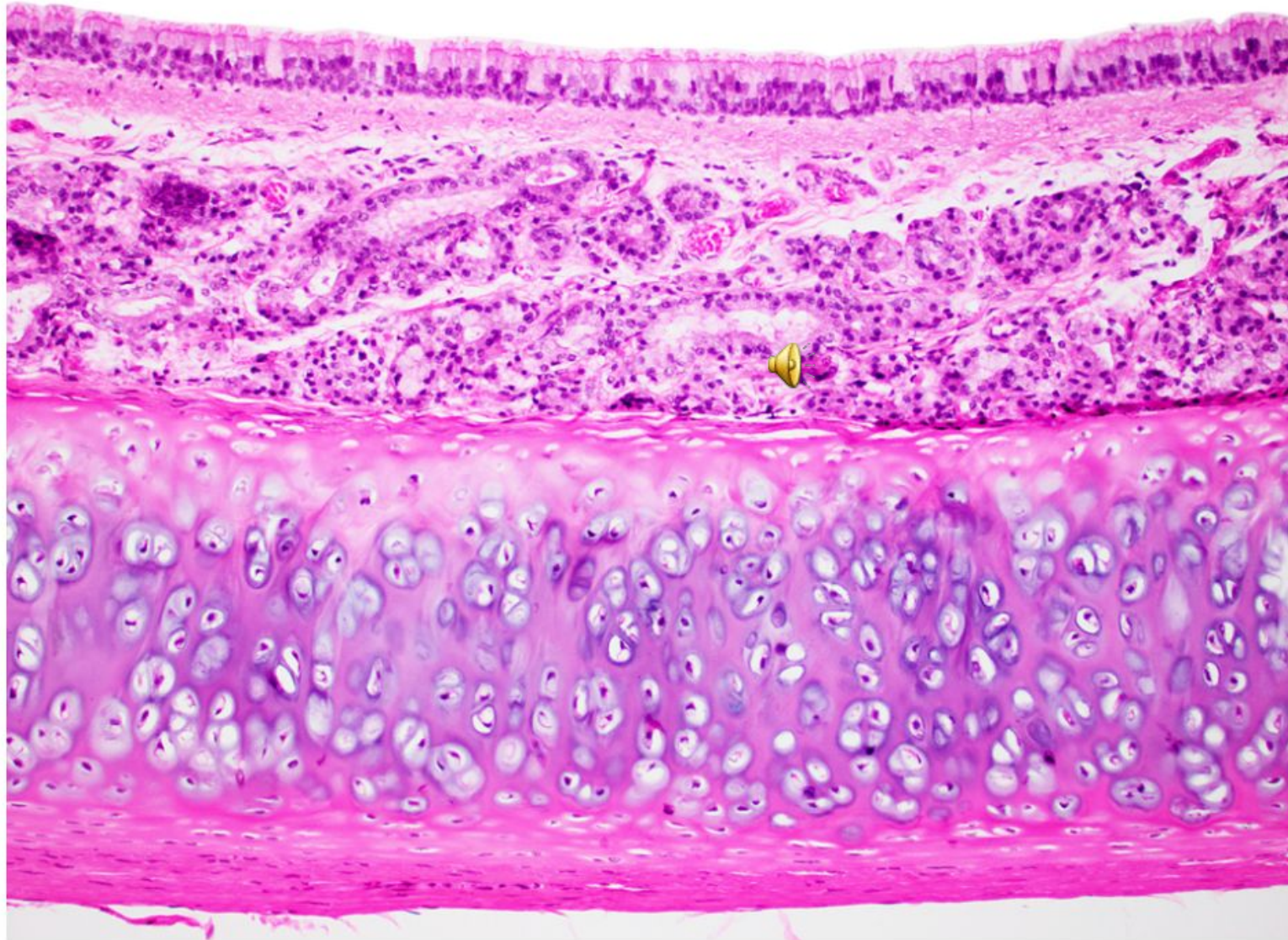
Thick skin



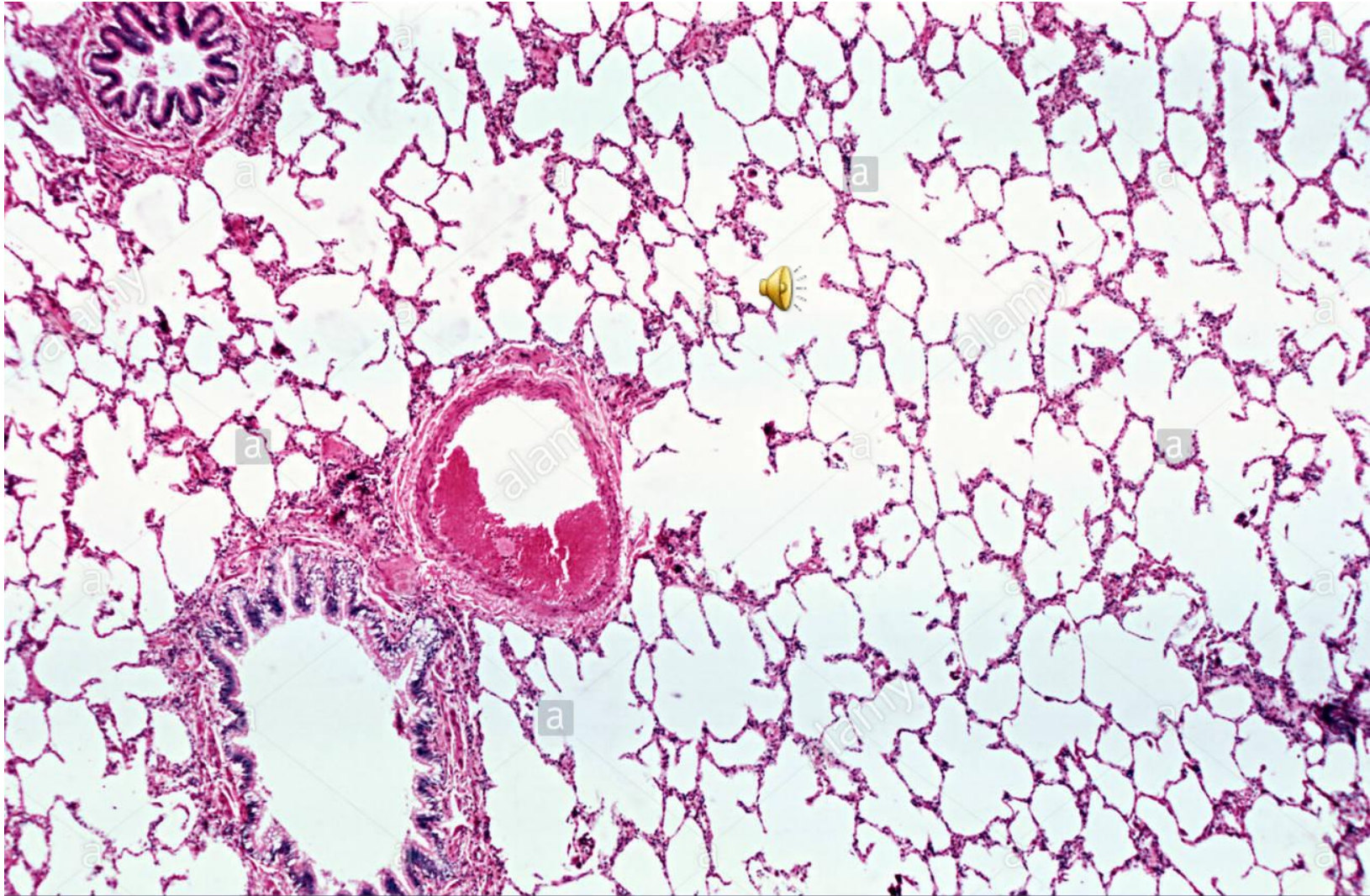
Respiratory system



Trachea



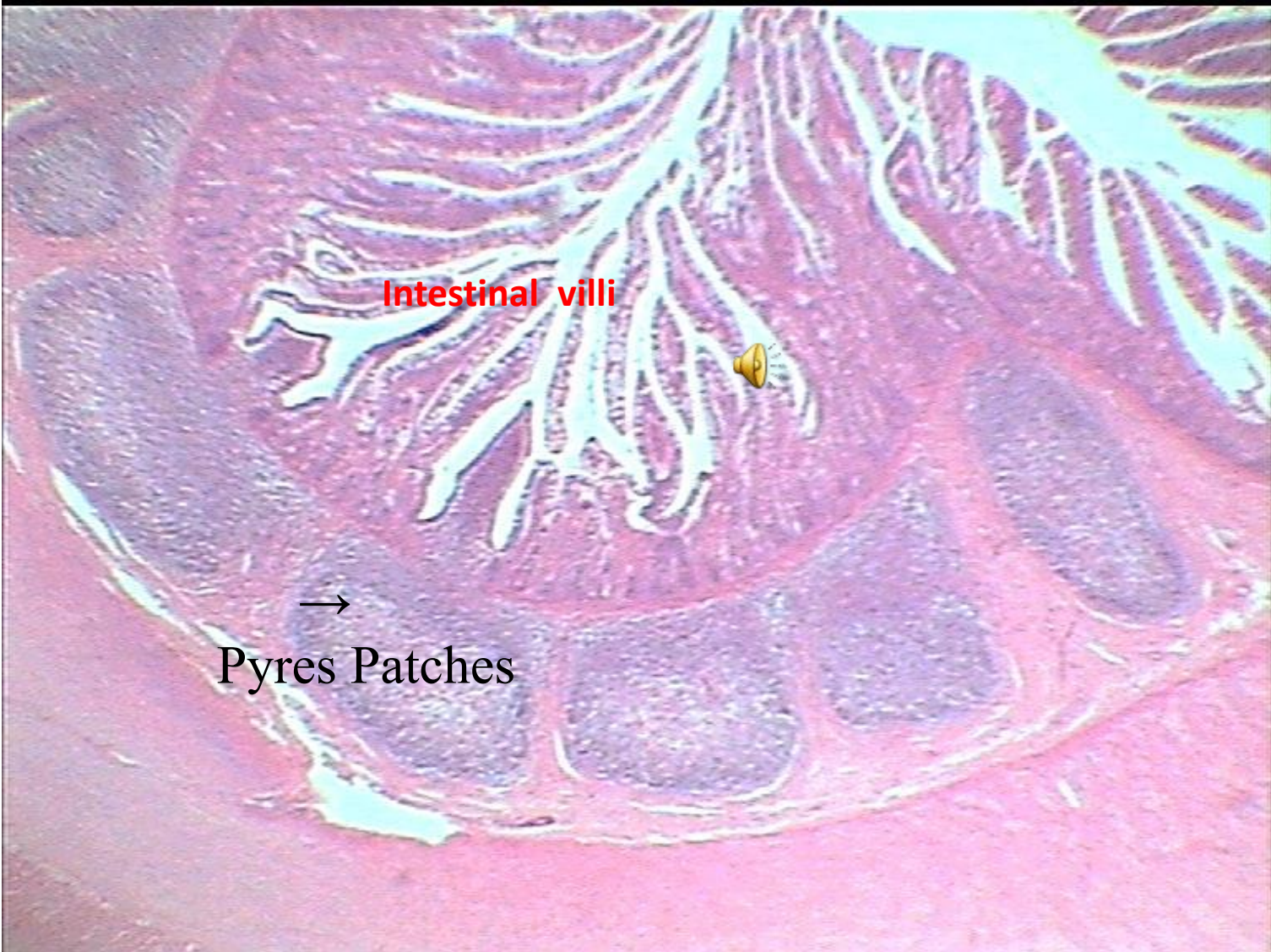
Lung



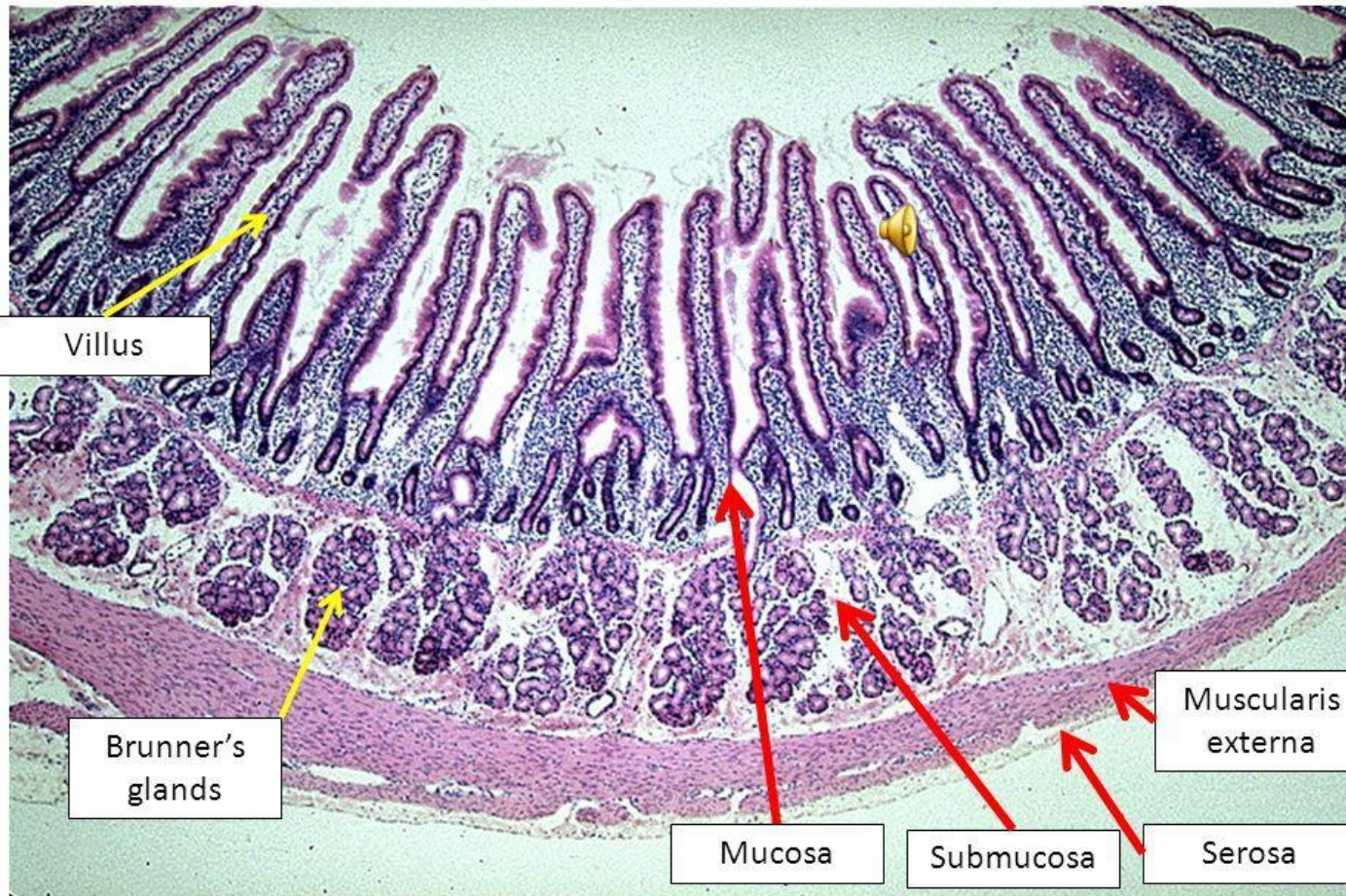
GIT And associated gland



Ileum



Duodenum



Jejunum

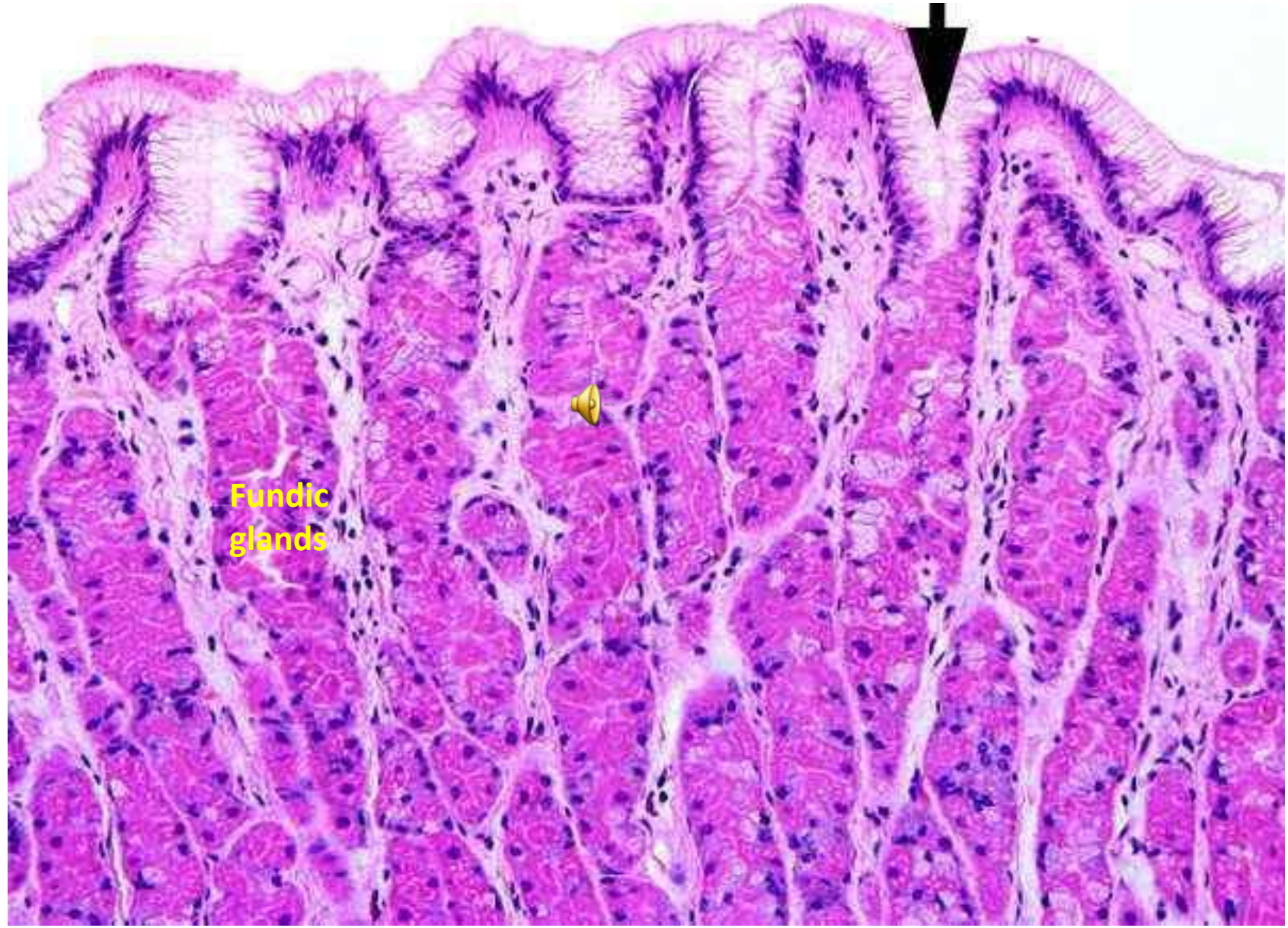


Fundus

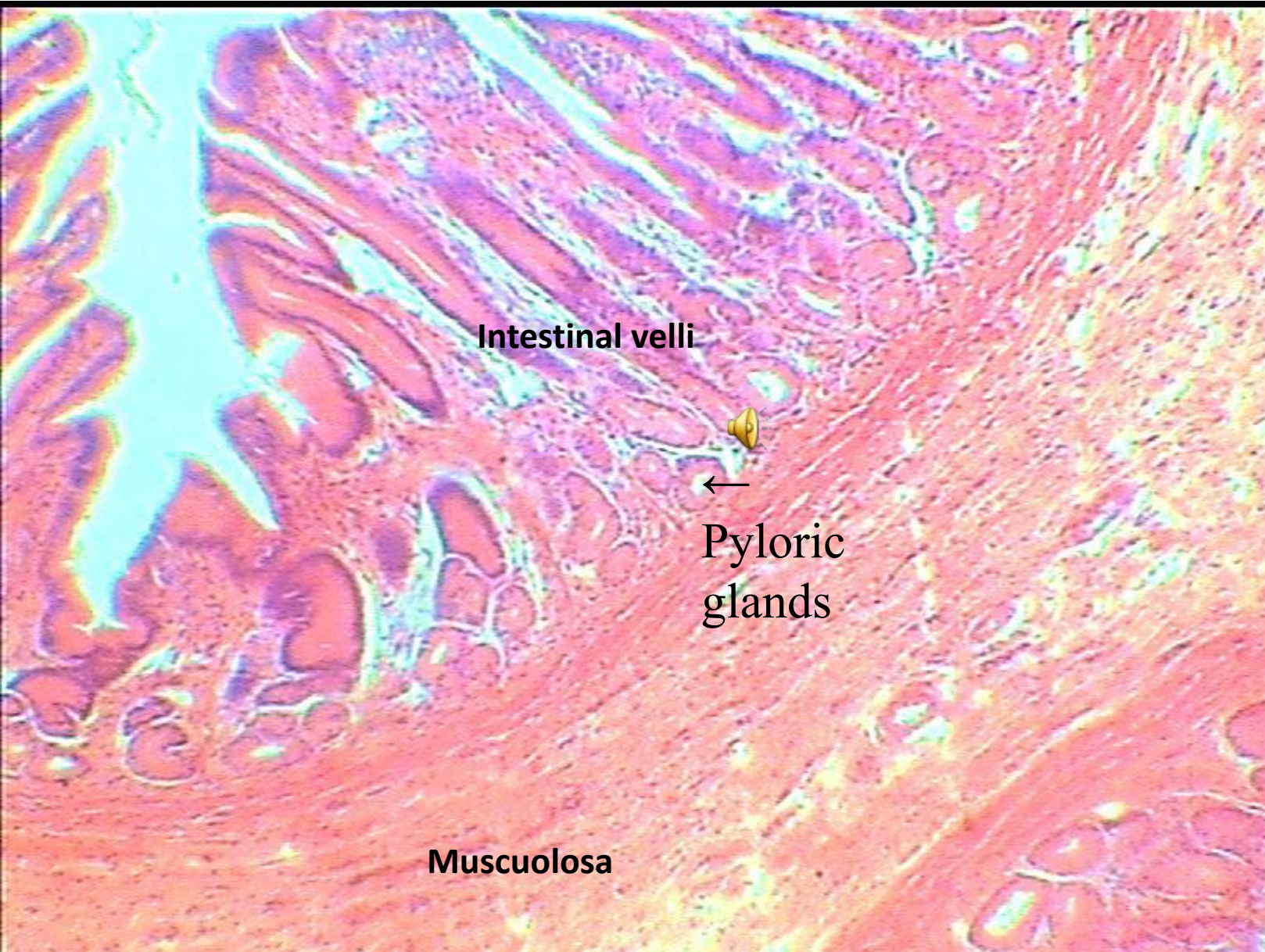
Gastric pits



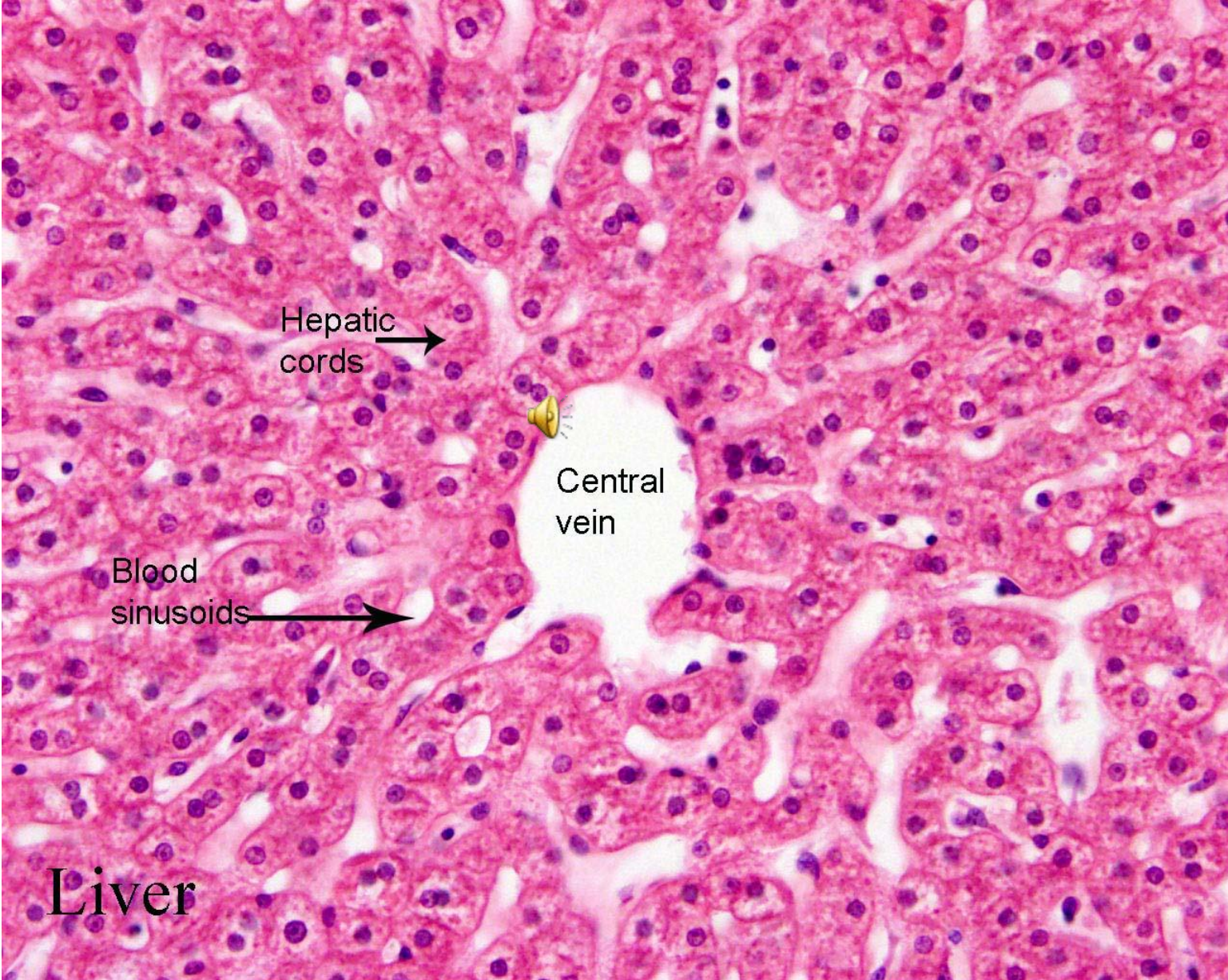
Fundic glands



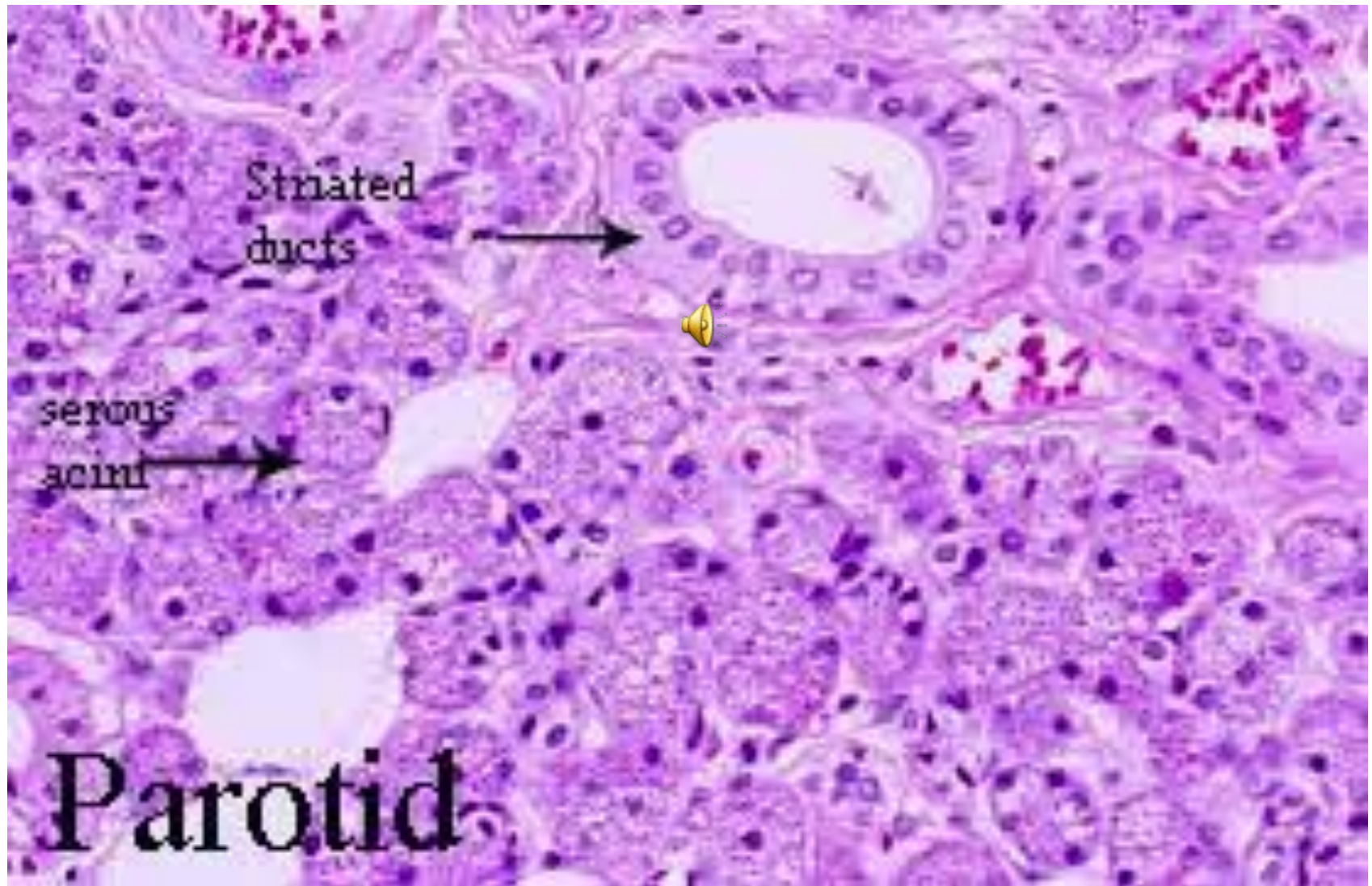
pylorus



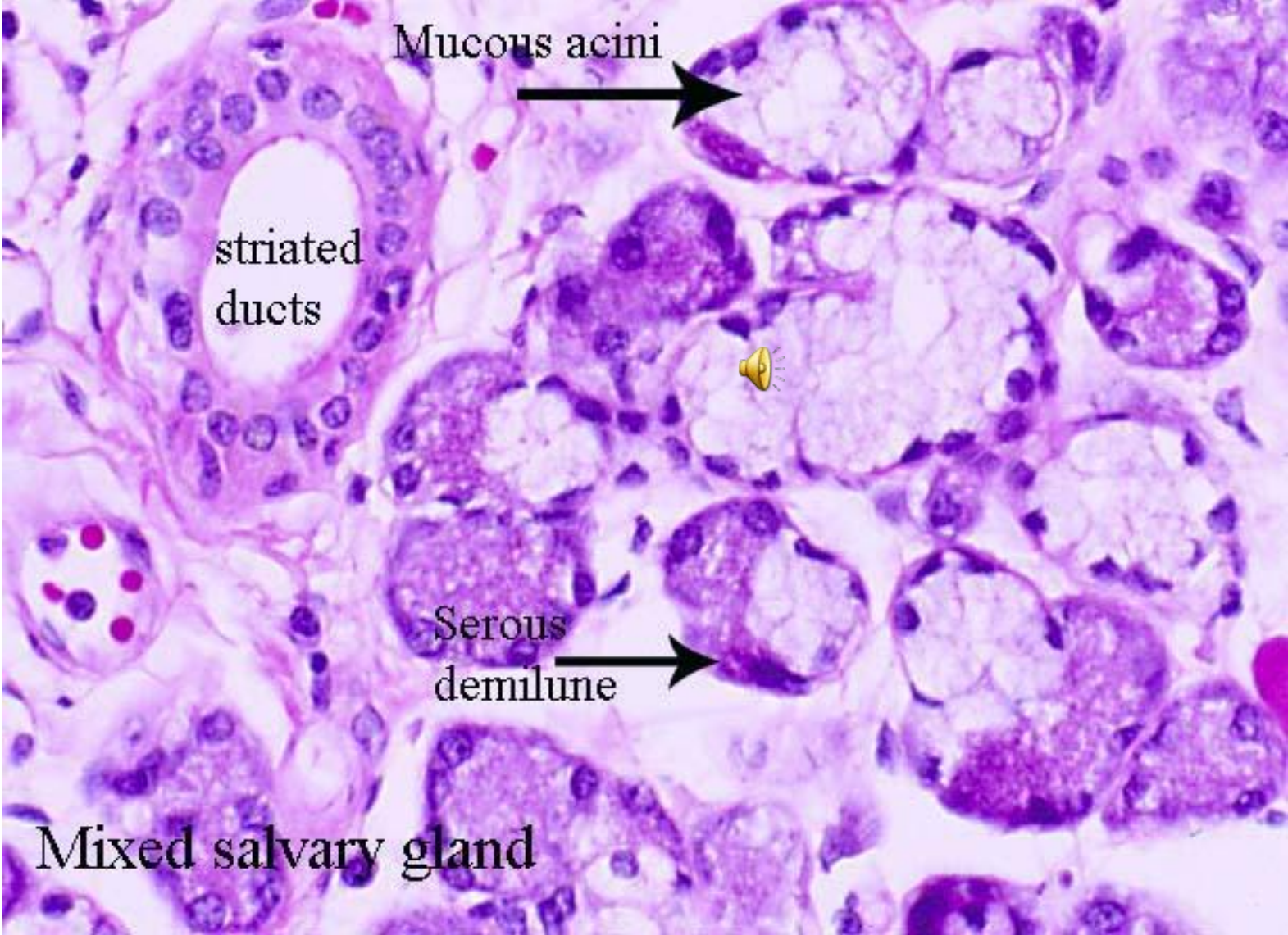
Liver



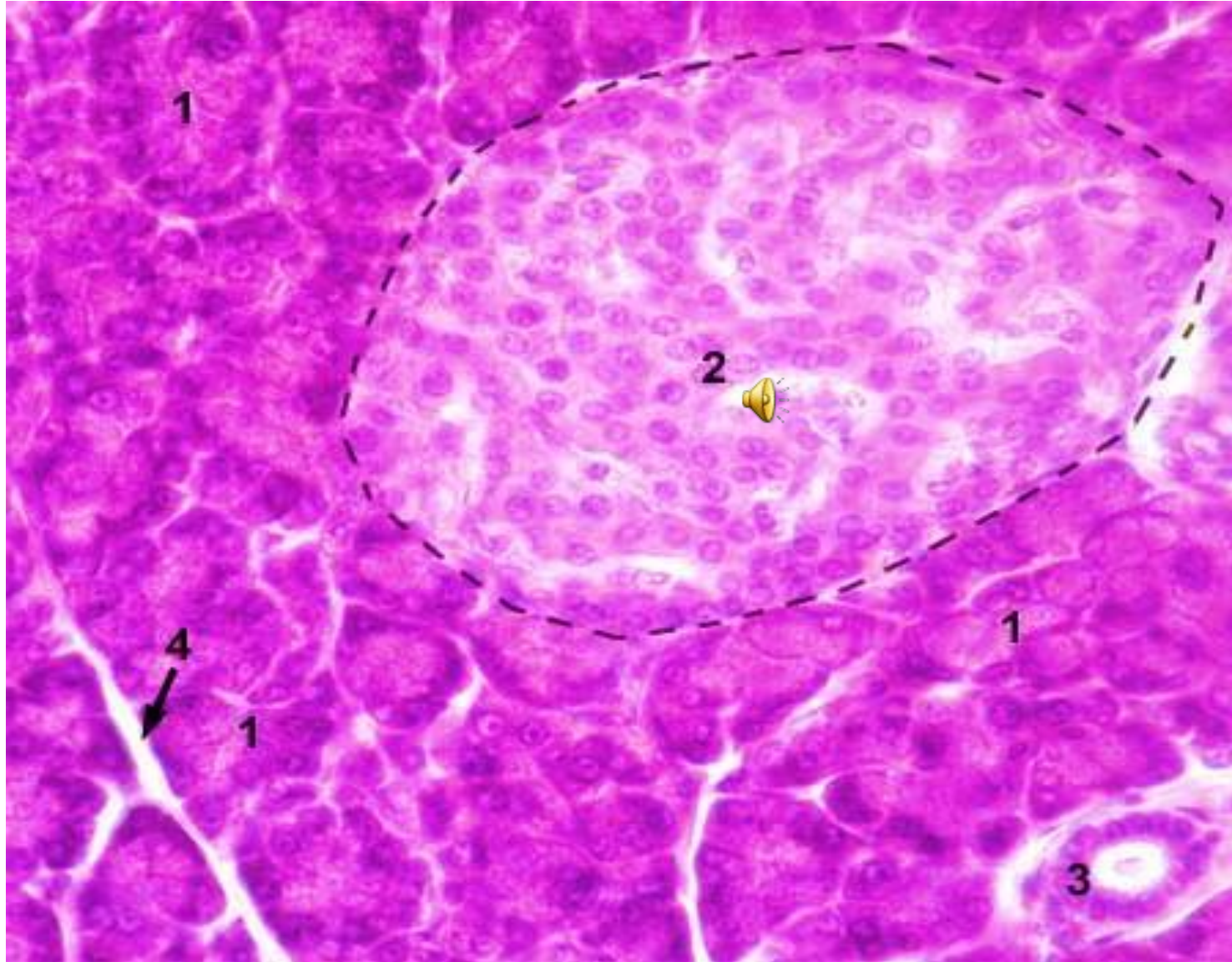
Parotid



Mixed salivary gland



- Pancreas :**
- 1-Serous acini**
 - 2-Islet of langerhan**
 - 3-duct**
 - 4-C.T septa**



Urinary system



Kidney

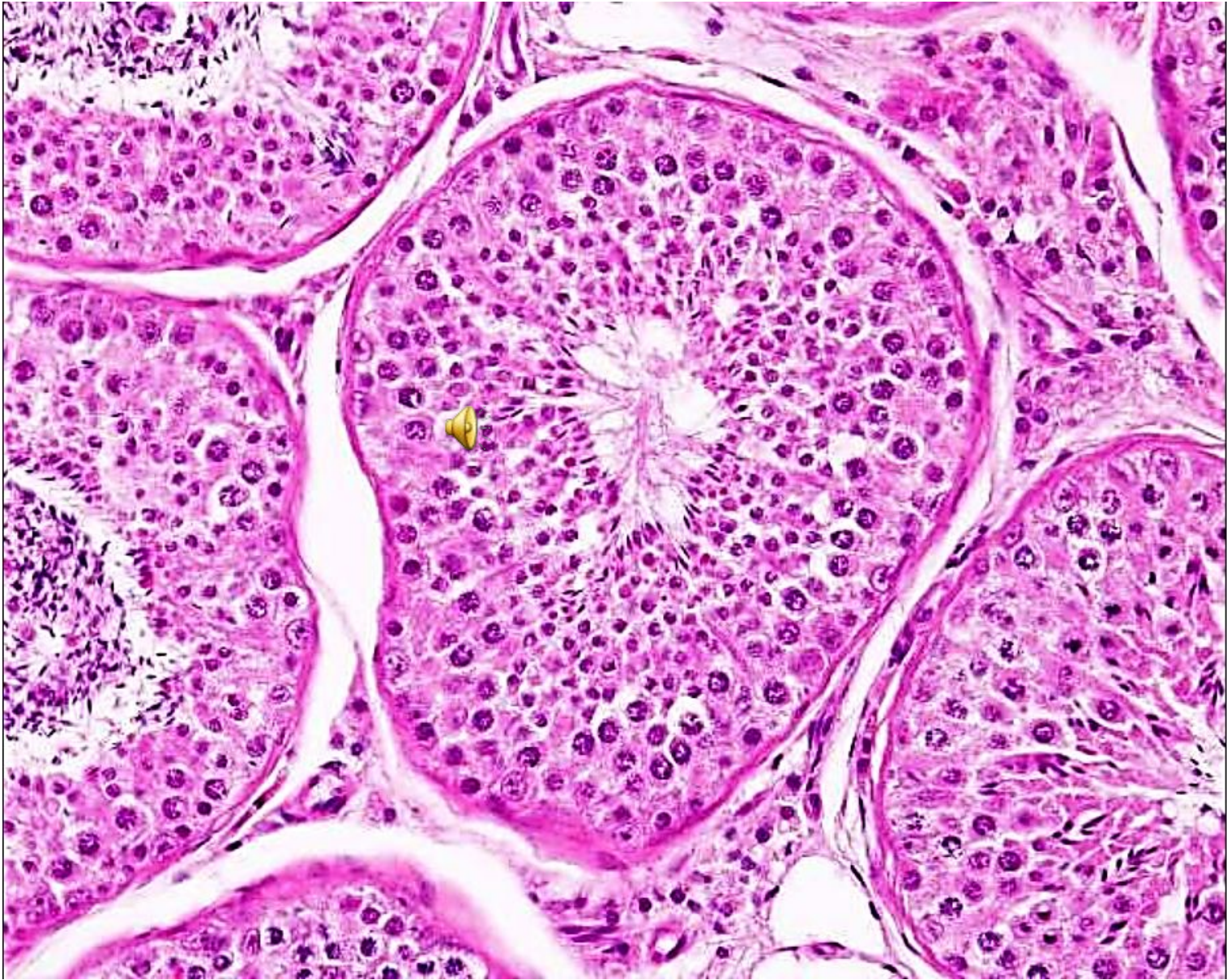


Renal corpuscle

Male genital system

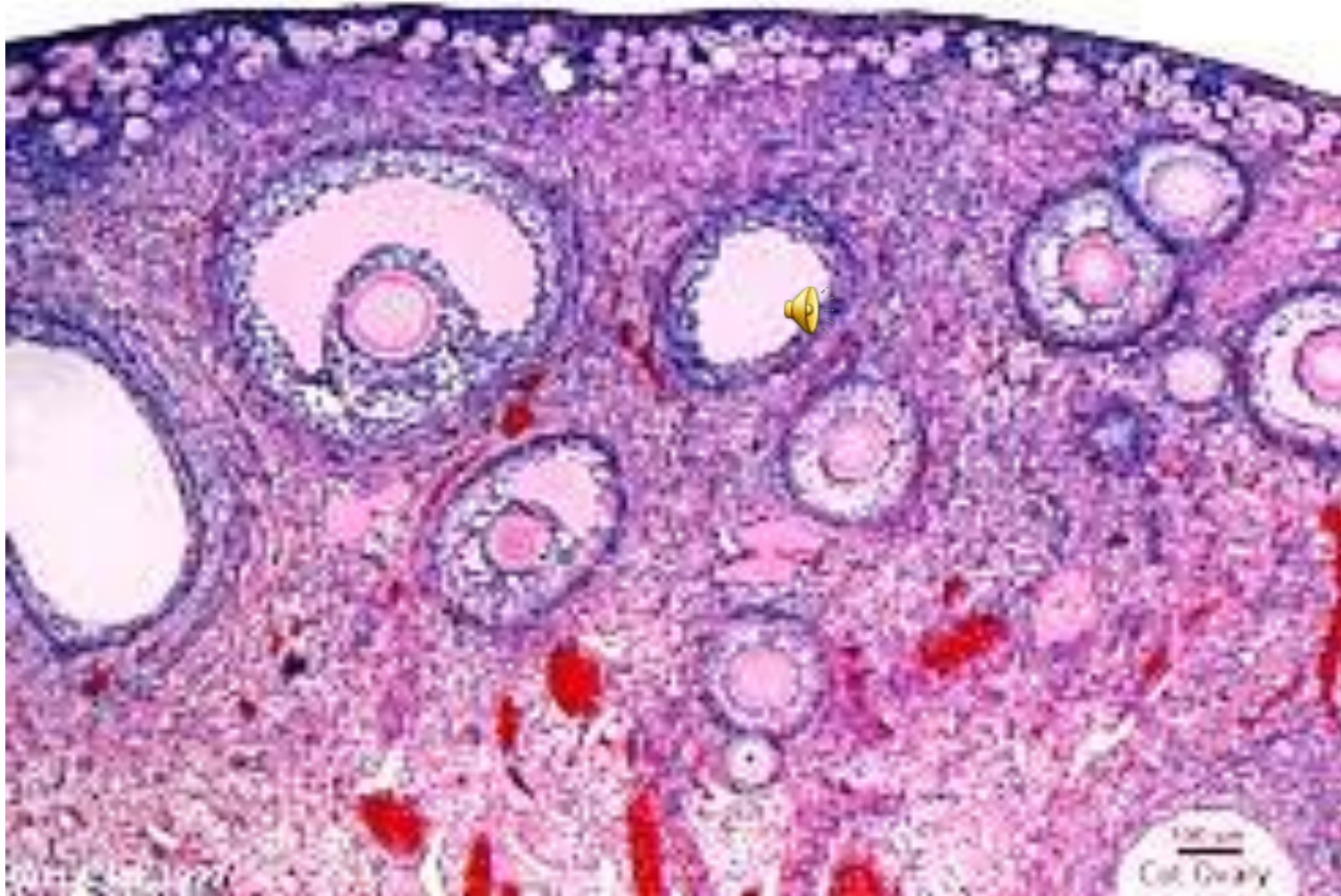


Testis



Female genital system

Ovary



Endocrine system



Pituitary

