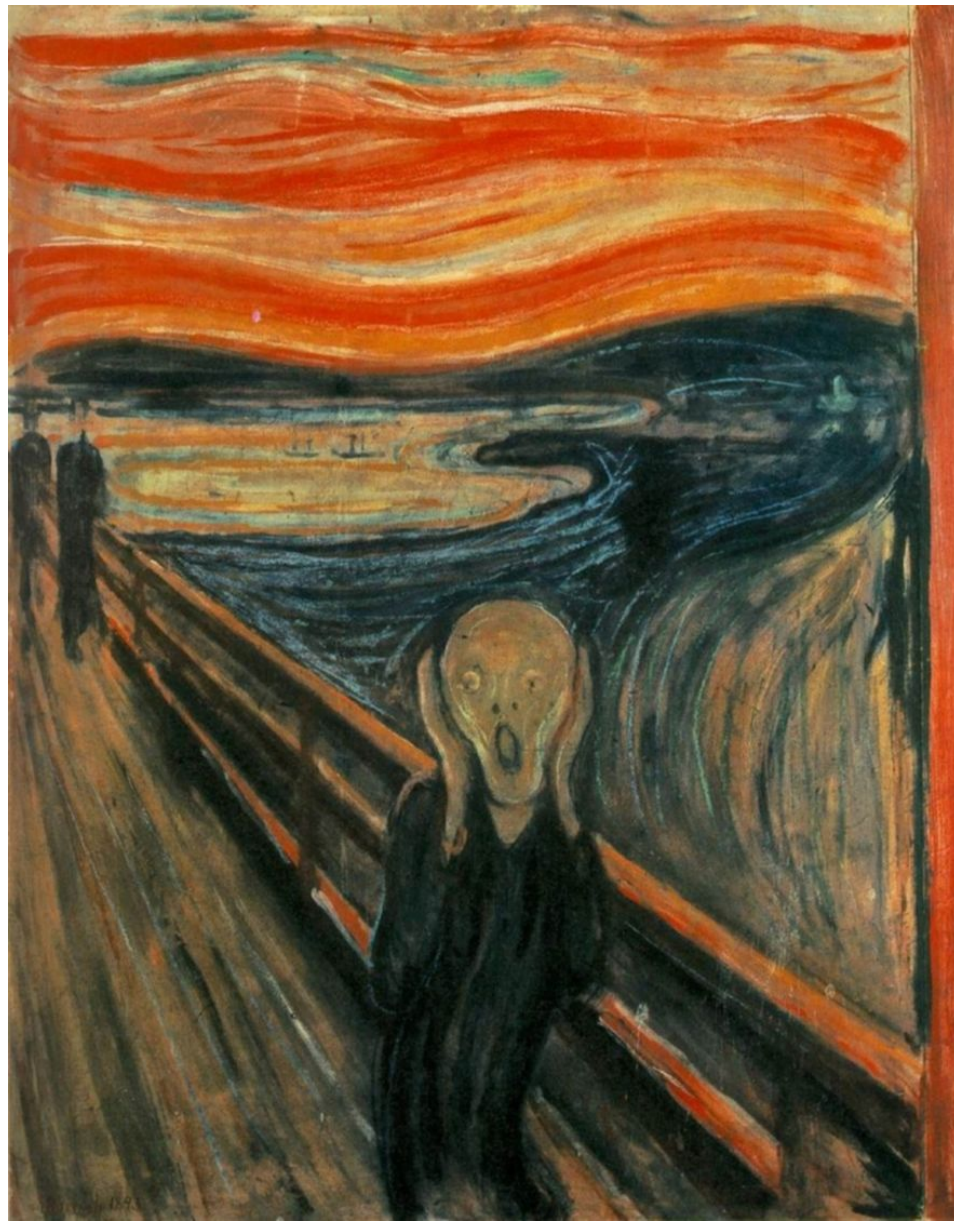


**SCREAM,  
EDWARD  
MUNCH, 1893**



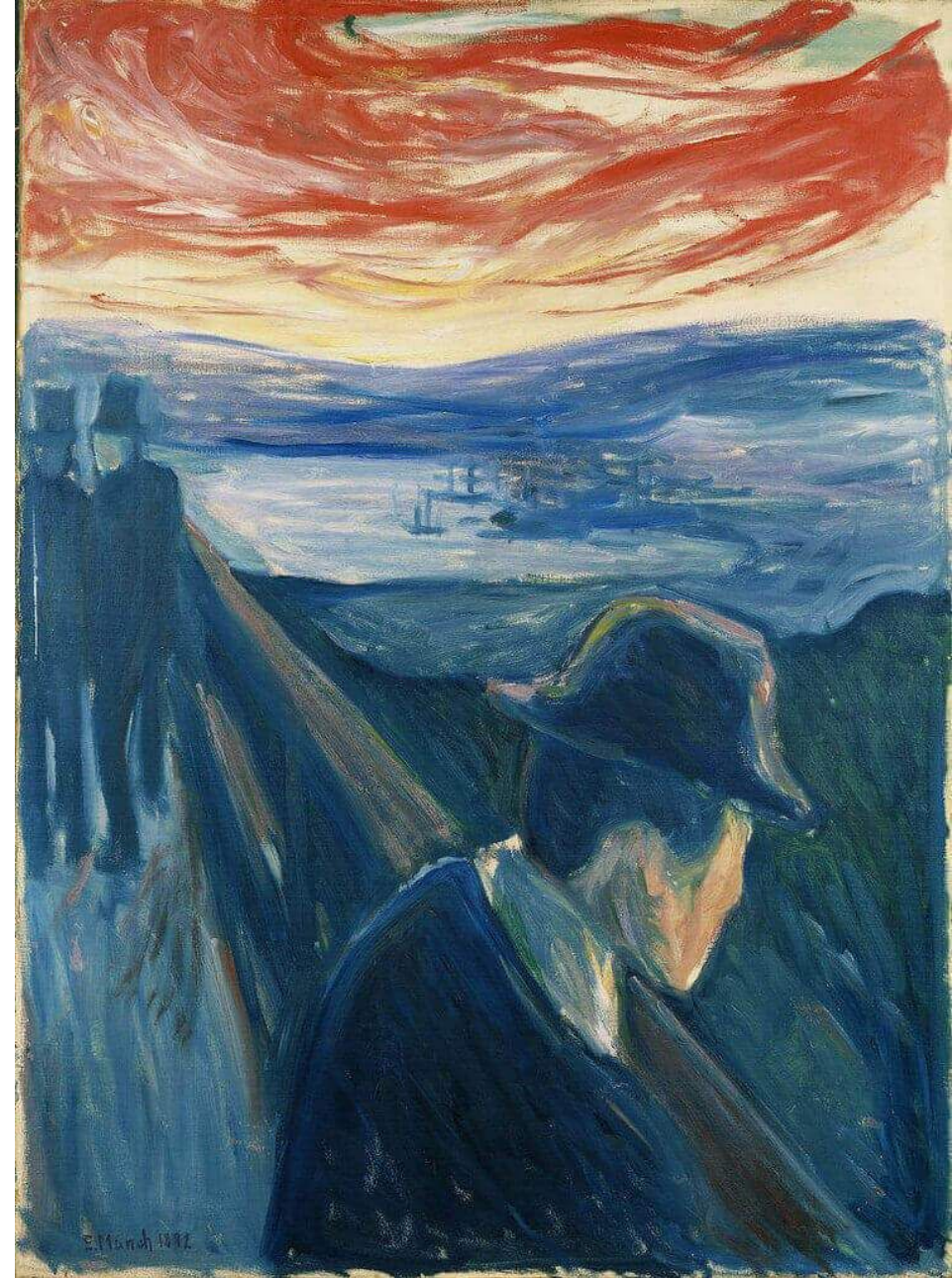


Edward Munch. Scream. 1893. The National Gallery of Norway in Oslo.



# HISTORY OF CREATION

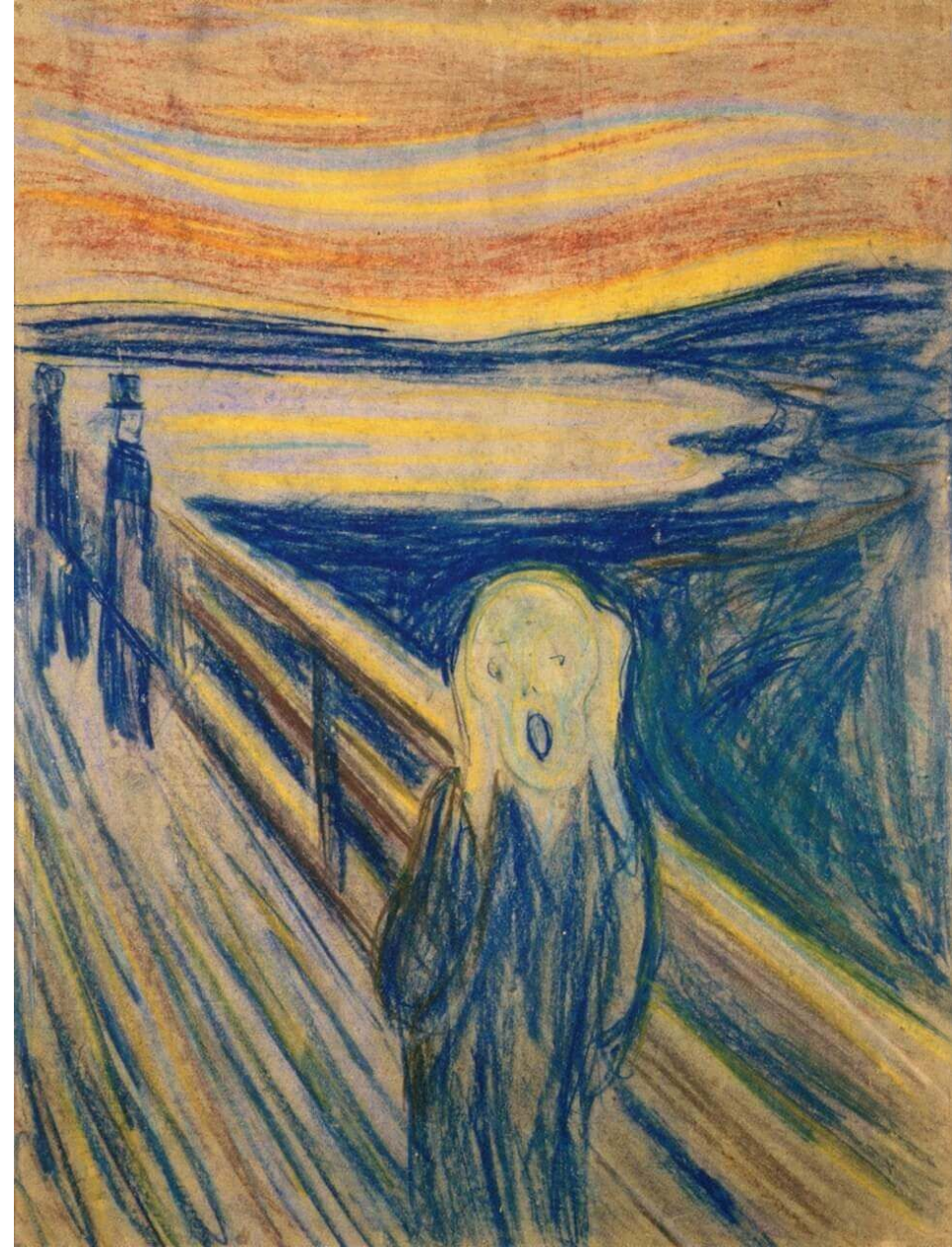
- Munch told about how the idea to create “Scream” came about, having created a copy of his masterpiece a year after the original.
- It turns out that once he was walking with friends on a bridge near one fjord. And suddenly the sky turned red. The artist was numb with fear. His friends went further. And he felt unbearable despair from what he saw. He wanted to scream ...
- This is his sudden state against the background of a reddened sky, he decided to portray. True, at first he got such a job.



Edward Munch. Despair. 1892  
Munch Museum, Oslo



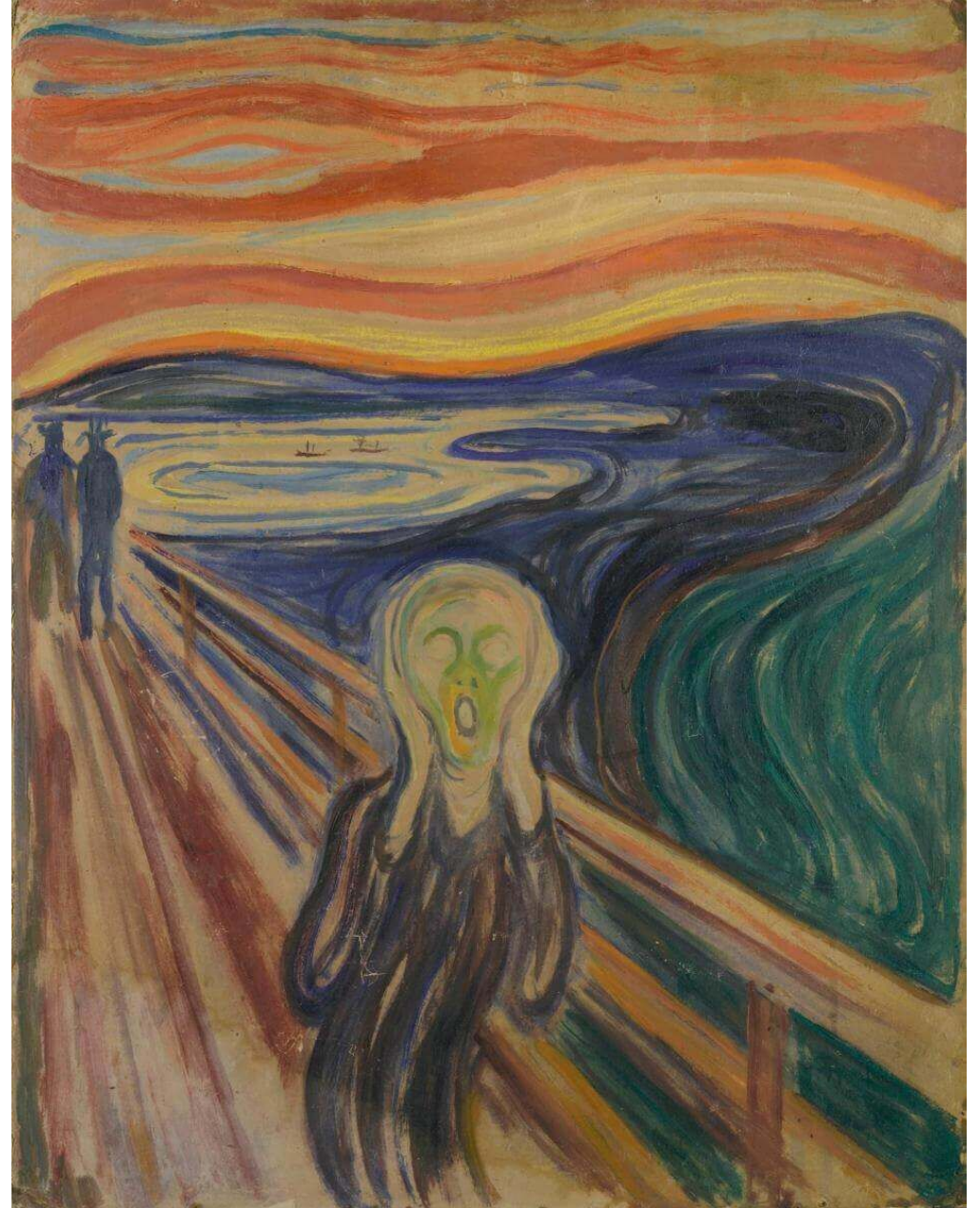
- In the painting “Despair”, Munch portrayed himself on the bridge at the time of unpleasant emanations.
- And only a few months later he changed his character. Here is one of the sketches for the picture.



Edward Munch. Scream. 1893 30x22 cm.  
Pastel. Munch Museum, Oslo



- But the image was clearly intrusive. However, Munch was inclined to repeat the same subjects repeatedly. And almost 20 years later, he created another “Scream”.



Edward Munch. Scream. 1910  
Munch Museum in Oslo



# DESCRIPTION OF THE

- In the foreground of the picture is a human figure screaming in despair.
- In the background of the picture you see two figures in a hat, they go and do not notice what is happening with the main figure. The sky is dominated by "liquid" and swirling, orange tones, and the road and the surrounding landscape are illuminated by dim light.
- With each stroke, Munch seeks to express a feeling of longing and despair.

