

Price request
Even Table
Round top 90 cm

Please confirm all the thicknesses are as drawing or please specify which parts that have changed.

PRICE FOR THE WHOLE TABLE – ROUND TOP Ø90 CM



Dimensions

- ROUND 90: Ø:900 x H:740

Colours/Print

SUITABLE FOR OUTDOOR:

- Black: RAL 9005 Tiefschwarz, Gloss level 25%

Packaging

One table is packed in 2 gift boxes:

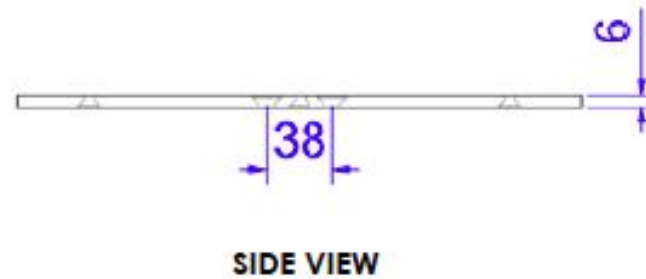
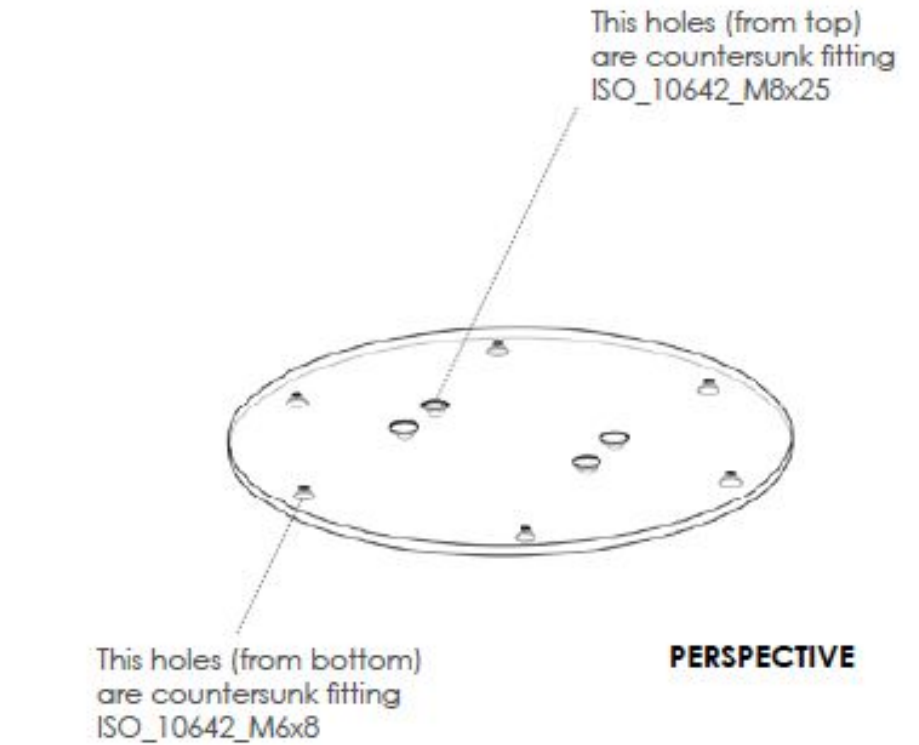
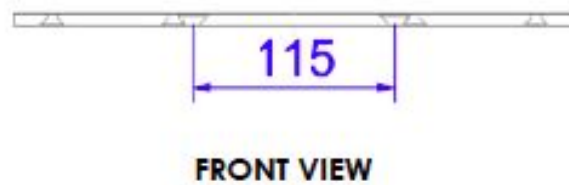
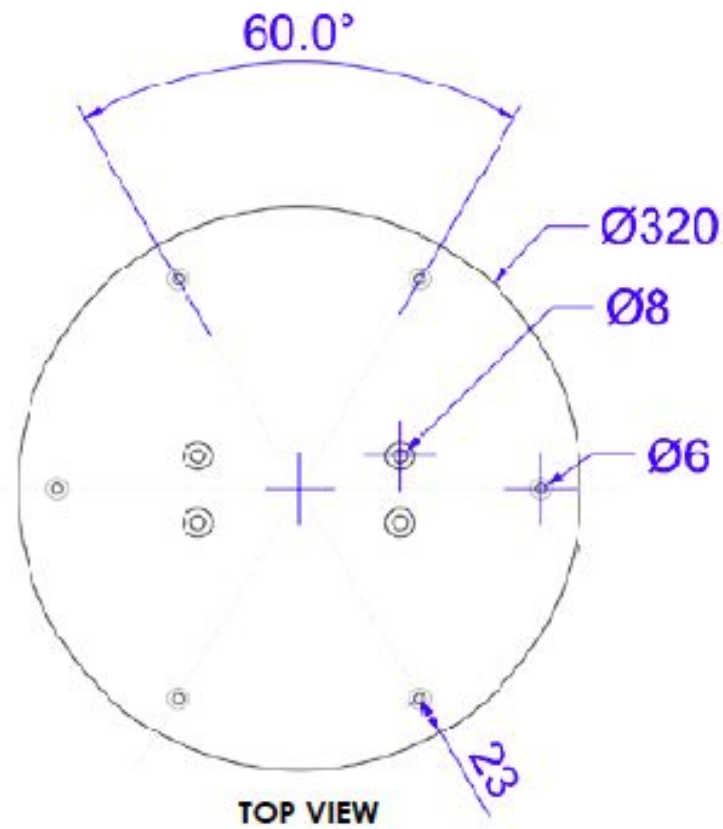
- 1 - Base Foot (Same for all design, Flat packed)
- 1 - Table top (Round Ø90)

Specific requirements:

- 6 countersunk screw M6x8m- Stainless steel HEX screws
- 8 countersunk screw M8x25 - Stainless steel HEX screws
- 1 corresponding Allen key for mounting
- 1m of “Thread seal tape” (PTFE tape) to securised the screws.
- 4 shoes adjustable
- 1 perforated disc of plastic

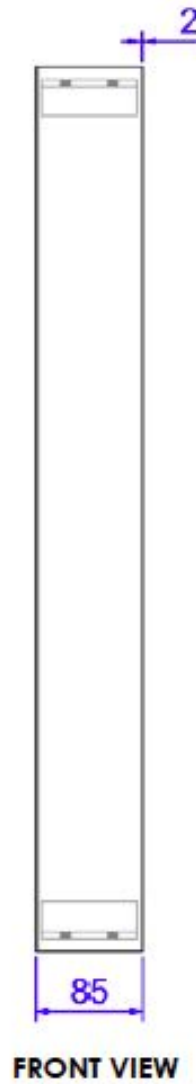
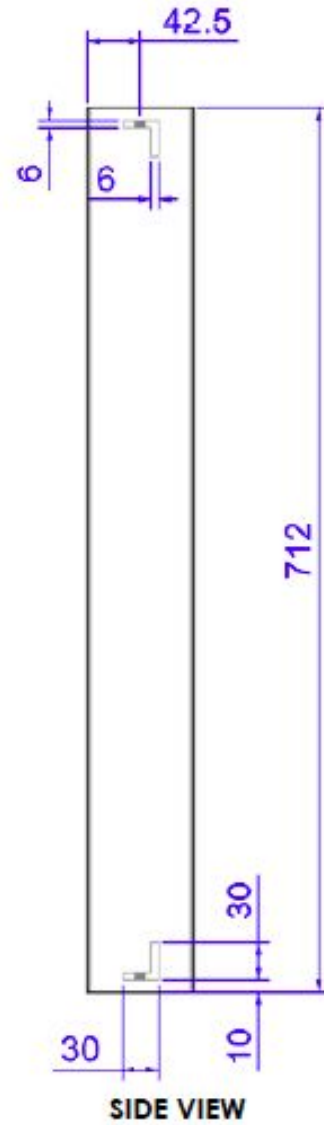
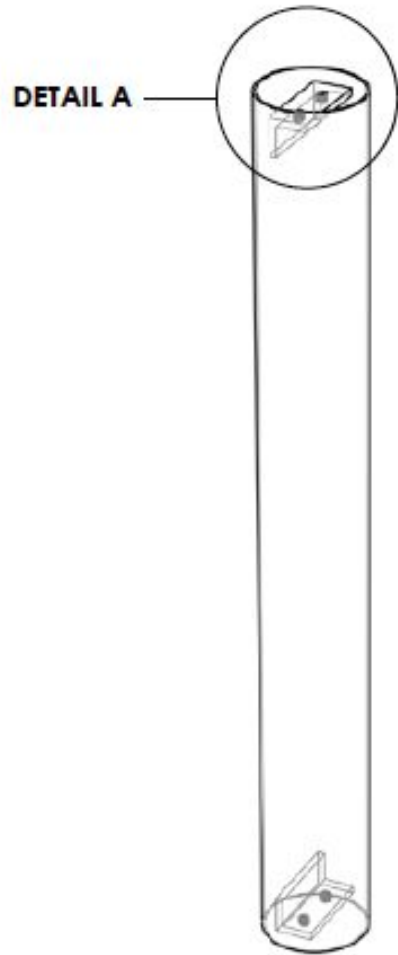
**CONNECTING PLATE Ø320 _ ELECTRO-GALVANISED STEEL
(PACKED IN "FOOT GIFT BOX")**

Not galvanised

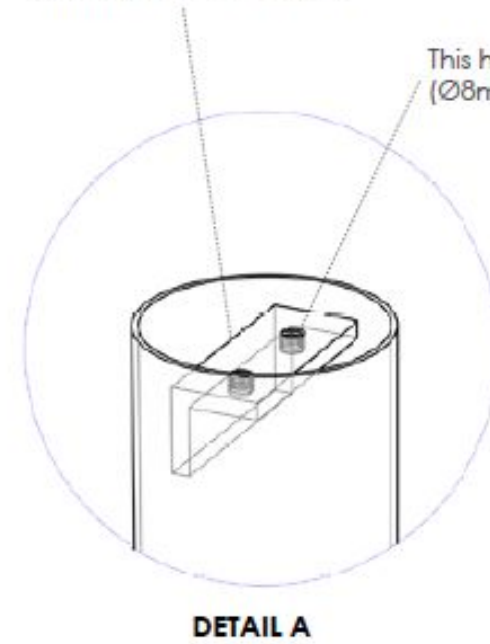


**FOOT TUBE (X2)_ ELECTRO-GALVANISED
(PACKED IN "FOOT GIFT BOX")**

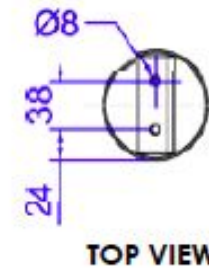
Not galvanised



The L brackets are welded
10mm far from the edges

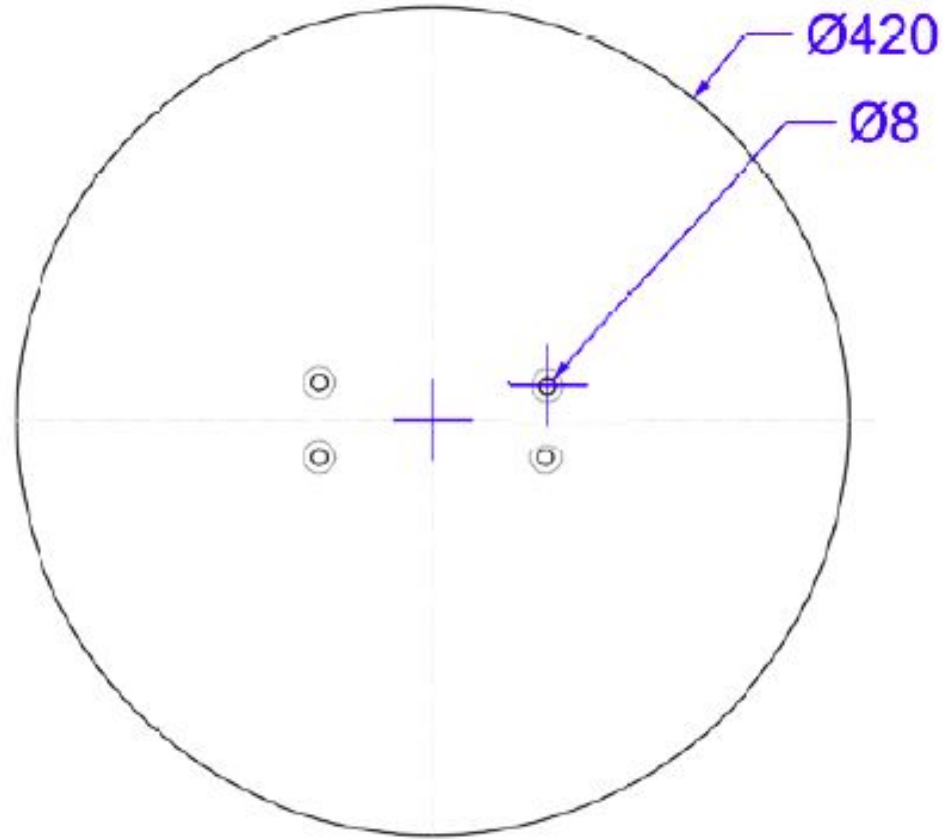


This holes are threaded
(Ø8mm)

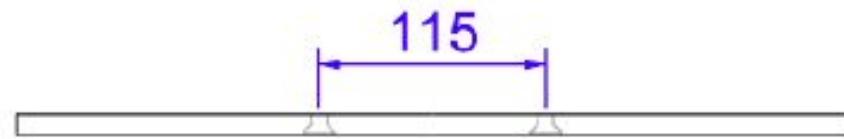


Wall thickness of the tube is 2mm but you can advise us on this.

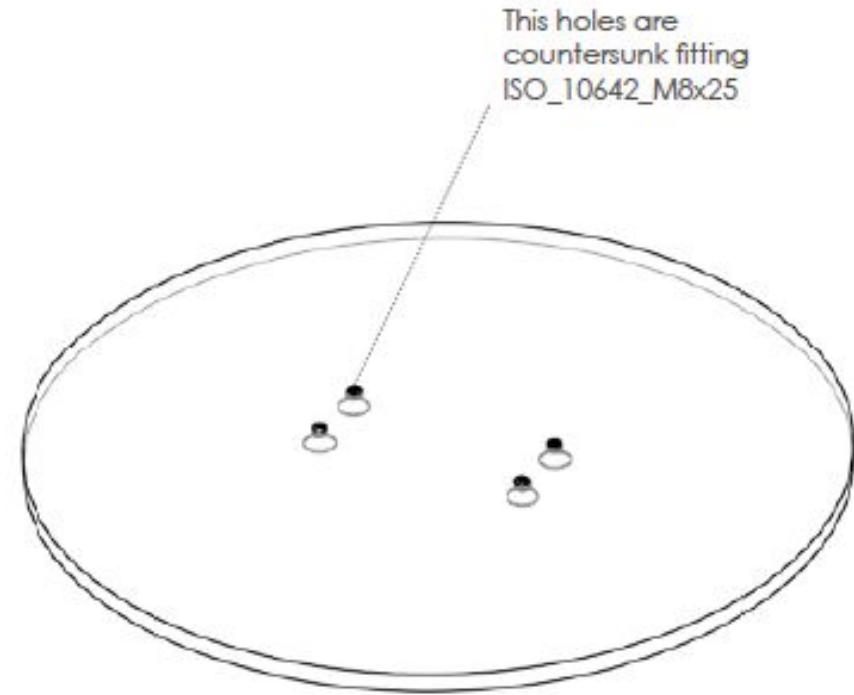
BASE Ø420 _ ELECTRO-GALVANISED STEEL
(PACKED IN "FOOT GIFT BOX") Not galvanised



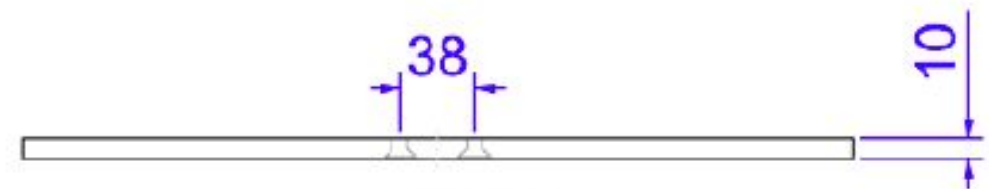
TOP VIEW



FRONT VIEW



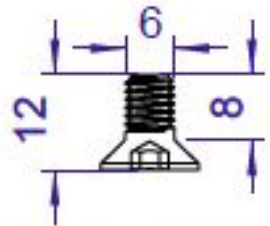
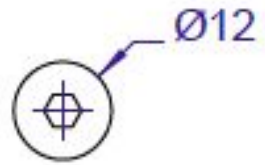
PERSPECTIVE



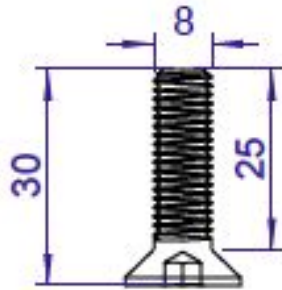
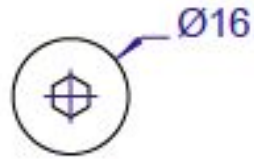
SIDE VIEW

NO FILT - SHOES
INSTEAD!!!

INCLUDED WITH THE FOOT:



6 X COUNTERSUNK SCREWS
ISO_10642_M6X8
(HEX SCREWS, STAINLESS STEEL)



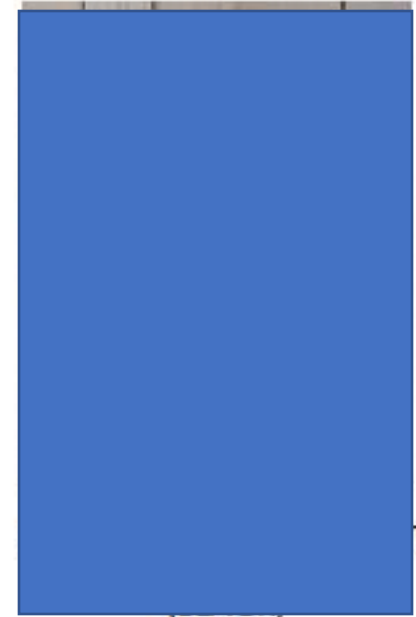
8 X COUNTERSUNK SCREWS
ISO_10642_M8X25
(HEX SCREWS, STAINLESS STEEL)



CORRESPONDING ALLEN KEY



1 METER OF PTFE TAPE



+ 1 PERFORATED PLASTIC DISC

COMMENT ON SAMPLE_WELDINGS MARKS

3_ PLEASE TRY TO AVOID THE WELDING'S MARKS ON THE TOP BUT ALSO ON THE FEET (TOP AND BOTTOM)

