

# **GAS AND OIL WEST AFRICA MARKET INTRODUCTION**

## **CONTENT**

### **1: INTRODUCTION**

- STD COMPANY**
- STD MARKET**

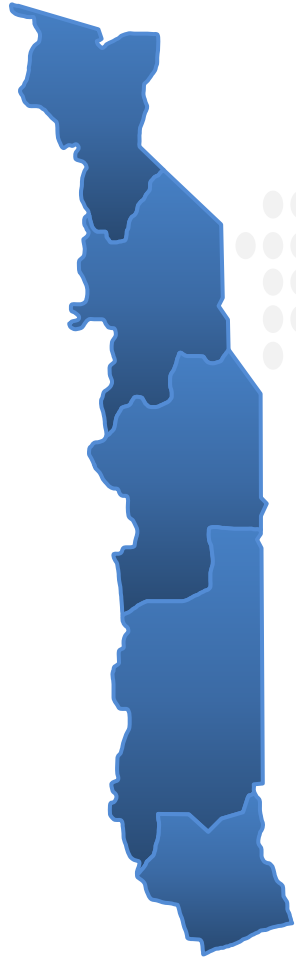
### **2: PRODUCT NEED**

### **4: TOGOLESE PRODUCT SPECIFICATION AND NEED**

### **5: PRODUCT DELIVERED**



# 1: STD COMPANY INTRODUCTION



**1: STD COMPANY, STD SARL ( SOCIETE TECHNOLOGIQUE DE DISTRIBUTION)  
Headquarters in Lomé-TOGO with a branch in DUBAI: STD DMCC DUBAI.**

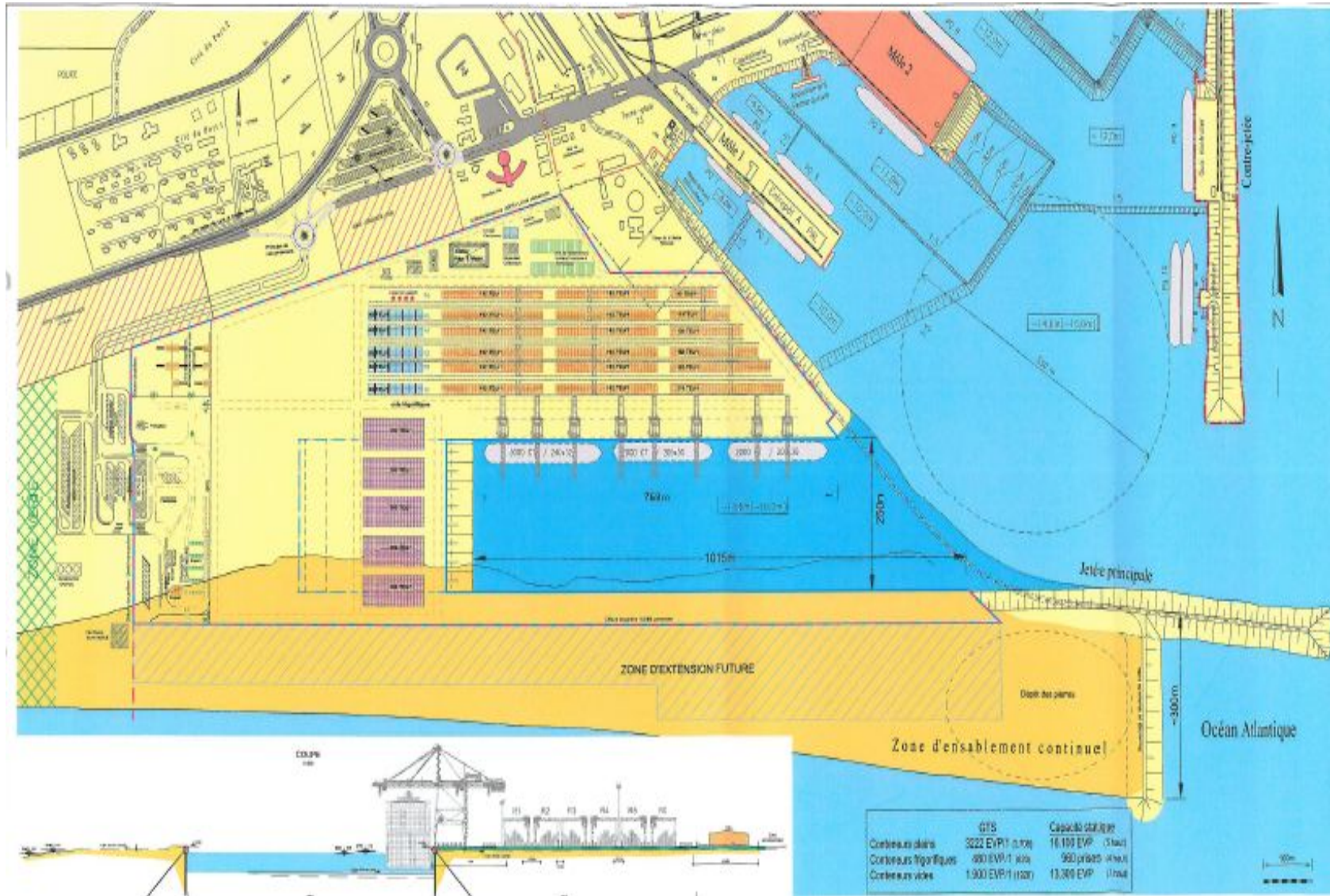
**2: FEW YEARS EXPANDED INTO GAS AND OIL MARKET:**

*- Awarded the exclusive supplier package of Fuel for the power plant in TOGO for the National Electricity company.*

*- Contract with government Agency ( STSL TOGO ) in charge of control / Management of Petroleum product storage units for the country. Distribution management for TOGO and borough countries.*

**3: MARKET SOURCE: MARITIME ZONE OF LOME**

## 2: STD MARKET AND PORT OF LOME FACILITIES



## 2: STD MARKET AND PORT OF LOME FACILITIES

### The maritime zone Offshore LOME--TOGO



1: MARITIME ZONE OFFSHORE LOME : CURRENTLY THE BIGGEST PLATFORME MARKET IN AFRICA.

2: GIGANTIC HUB WITH DOZENS OF TANKERS WHERE MAJOR TRADERS OPERATING

3: STD IS COVERING FEW COUNTRIES IN WEST AFRICA: TOGO, BURKINA FASO, NIGER, MALI, BENIN, IVORY COAST, DRC

4: TOTAL POTENTIAL MARKET :

10 Million MT/ YEAR OF REFINED PETROLEUM PRODUCT:

- GASOIL
- GASOLINE
- JET A1
- FUEL OIL
- HFO

# 3: PRODUCT NEED AND SPECIFICATIONS ( TOGO )



**GASOLINE :Volume per Month:  
15.000 MT –30.000 MT**

**JET A1 (AVIATION FUEL )  
Volume per Month:  
5000 MT –10.000 MT**

PRODUIT		GASOLINE	
T		PMS	
Super		.....	
Méthodes	PROPERTIES	CARACTERISTIQUE	TOGO SPEC
ASTM			
D 1298	Density at 15° C	Densité à 15° C Kg / l	0,720 - 0,790
Visual	Color	Couleur	PALE YELLOW
D 357	Research octane Number	Nombre d'octane Méthode Recherche	Min 91
D 86	Distillation		
	- 50 %	- 50 % ° C	Min 75 Max 125
	- 90 %	- 90 % ° C	Max 180
	- Final Boiling Point	- Point Final ° C	Max 215
	- Residue	- Résidu Vol %	Max 2,0
D 381	Existent Gum	Gommes actuelles mg/100ml	Max 5
H and G	Sulphur	Soufre ppm	50
D 130	Copper Corrosion 3h at 50 ° C	Corrosion Lame de Cuivre (3h à 50 ° C)	Max 1B
	Odour	Odeur	COMMERCIA BLE
D 3341	Total Lead as TEL	Plomb Total TEL g / l	Max 0,013
D 323	Reid Vapor Pressure	Tension de Vapeur Reid g/cm²	Max 650 g/cm2 ou Max 9.42 PSI
D 525	Induction Period	Période d'induction	Min 240

Jet A1  
PRODUIT .....  
AI .....

PROPERTIES	REMARKS	METHODS	TOGO SPEC
<b>APPEARANCE</b>			
Appearance	(see 1)	Visual	Clear, Bright
<b>COMPOSITION</b>			
Total Acidity, mgKOH/g	(see 2)	ASTM D 3242	0.015 max
Aromatics, % vol		ASTM D 1319	25.0 max
OR Total Aromatics, % vol	(see 3)	ASTM D 6379	26.5 max
Sulphur total, % m/m		ASTM D 4294	0.30 max
Sulphur Mercaptan, % m/m		ASTM D 3227	0.003 max
OR Doctor Test	(see 4)	IP 30	Negative
<b>VOLATILITY</b>			
Distillation	(see 6)	ASTM D 86	
- Initial Boiling Point, °C			Report
Fuel Recovered			
- 10% vol recovered, °C			205.0 max
- 50% vol recovered, °C			Report
- 90% vol recovered, °C			Report
- End Point, °C			300.0 max
- Residue, % vol			1.5 max
- Loss, % vol			1.5 max
Flash Point, °C	(see 7)	ASTM D 3828	38.0 min
Density at 15° C, kg/m³		ASTM D 4052	775-840
<b>INCIDENTALS</b>			
<b>MATERIALS</b>			
Fatty Acid Methyl Ester (FAME)mg/kg		ASTM D 7797	Max 50
<b>FLUIDITY</b>			
Freezing Point, °C		ASTM D 2386	- 47 max
Viscosity at - 20°C, cSt (mm²/s)		ASTM D 445	8.000 max
<b>COMBUSTION</b>			
Specific Energy, net, MJ/kg		ASTM D 4529	42.80 min
Smoke Point, mm		ASTM D 1322	25.0 Min
OR Smoke Point, mm		ASTM D 1322	19.0 min
AND Naphthalenes, % vol		ASTM D 1840	3.00 max
<b>CORROSION</b>			
Copper corrosion, Classification (2h at 100°C)		ASTM D 130	1 max
<b>STABILITY</b>			
Thermal Stability (JFTOT) Control Temp. 260°C		ASTM D 3241	
Filter Pressure Differential, mmHG			25.0 max
Tube deposit Rating (Visual)			< 3, no 'Peacock'
<b>CONTAMINANTS</b>			
Existent Gum, mg/100 ml		ASTM D 381	7 max
Microseparator (MSEP),			

### 3: PRODUCT NEED AND SPECIFICATION ( TOGO )



**GASOIL 0,1 LS :Volume  
per Month:  
30.000 MT –60.000 MT**

PRODUIT	Gasoil			
Methods	PROPERTIES	CARACTERISTIQUES		TOGO SPEC
ASTM IP				
	<i>Appearance</i>	<i>Apparence</i>		Clear & Bright
D 1298	<i>Density at 15° C</i>	<i>Densité à 15°C Kg / l</i>		0820 - 0865
D 1500	<i>Color</i>	<i>Couleur</i>		Max 3
D 976	<i>Cetane Index calculated</i>	<i>Indice de cétane calculé</i>		MIN 45
D 2500	<i>Cloud Point</i>	<i>Point de Trouble °C</i>		MAX + 3
D 1551	<i>*Sulphur % W</i>	<i>Soufre % Pds</i>		MAX 1.0
D 130	<i>Copper corrosion</i>	<i>Corrosion lame de Cuivre</i>		MAX 1B
D 189	<i>Carbon Conradson residue % W</i>	<i>Résidu Carbone Conradson % Pds</i>		MAX 0,15
D 95	<i>Water by distillation</i>	<i>Eau par distillation % Vol</i>		MAX 0,05
D 473	<i>Sediments by Extraction % W</i>	<i>Sédiments par Extraction % Pds</i>		MAX 0,01
D 482	<i>Ash % W</i>	<i>Cendres % Pds</i>		MAX 0,01
D 974	<i>Total acid Number</i>	<i>Acidité Totale mg KOH / g</i>		MAX 1,0
D 974	<i>Strong acid Number</i>	<i>Acidité Forte mg KOH / g</i>		NIL
D 93	<i>Flash Point</i>	<i>Point d'Eclair °C</i>		MIN 66
D 86	<b>Distillation</b>			
	<i>- Recoverd at 357° C</i>	<i>- Distillé à 357°C %Vol</i>		MIN 90
	<i>- Final Boiling Point</i>	<i>- Point Final °c</i>		385
	<i>- Total Recovered</i>	<i>- Total Distillé % Vol</i>		
	<i>- Residue</i>	<i>- Résidu % Vol</i>		
D 445	<i>Kinematic Viscosity at 37,8 °C</i>	<i>Viscosité Cinématique à 37,8 °C Cst</i>		1,6 - 5,9

# FERTILIZER WEST AFRICA MARKET : TOGO INTRODUCTION

## CONTENT

### 1: INTRODUCTION

- STD COMPANY
- STD MARKET

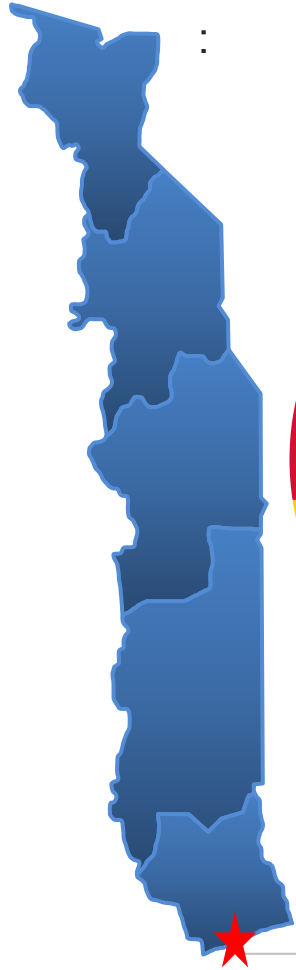
### 2: PRODUCT NEED

### 4: TOGOLESE PRODUCT SPECIFICATION AND NEED

### 5: PRODUCT DELIVERED



# MARKET : TOGO



1: NSCT: NATIONAL COTTON COMPANY

2: CAGIA :NATIONAL PROVIDER FOR FARMERS SUPPORT

3: STD SARL STORAGE



Lomé





# 1: NSCT ( NATIONAL COTTON COMPANY

## DESCRIPTION

COTTON COMPANY THAT WE SUPPLY EVERY YEAR

## SUPPLYING CONDITIONS

OFFICIAL PUBLIC TENDER. CURRENTLY SUPPLIED BY TOTAL (END OF CONTRACT 1 YEAR) OPEN TO WORK WITH US EVEN BEFORE



	PRODUCT REFERENCE	VOLUME	
1	NPSKB 12-20-18-5-1	30.000 MT	
2	UREA 46%	10.000 MT	
3			

## 2: CAGIA: NATIONAL PROVIDER OF FERTILIZERS FOR FARMERS



### DESCRIPTION

NATIONAL COMPANY. OUR PARTNERS SINCE MANY YEARS

### SUPPLYING CONDITIONS

OFFICIAL PUBLIC TENDERS

	PRODUCT REFERENCE	VOLUME		
1	NPK 15-15-15	3500 MT		
2	UREA 46%	1500 MT		

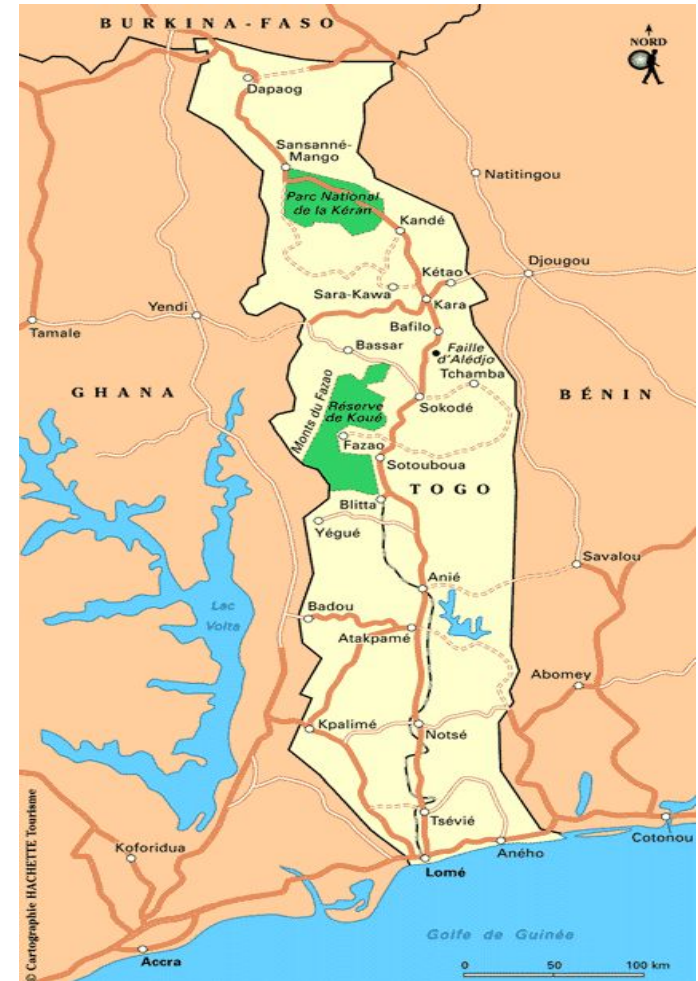
# 3: STD SARL FERTILIZER STORAGE

## DESCRIPTION

OUR COMPANY SALES DIRECTLY TO THE FARMER ACCROSS THE COUNTRY



	PROJECT ORDER	VOLUME
1	UREA 46%	40.000/50.000 MT
2	NPK 15-15-15	10.000 MT



# 4: STD SARL FERTILIZER STORAGE

DESCRIPTION

SPECIFICATIONS FOR TOGO



SOCIETE TECHNOLOGIQUE DE DISTRIBUTION

## FERTILIZERS SPECIFICATIONS STD

Please note that each product has been tested in different laboratories.

### NPK 15-15-15 IN BULK- CHEMICAL ANALYSIS CONFIRMED

PARAMETER	UNITS	SPECIFICATION	METHOD
Total NITROGEN (N)	%wt	15.00% min	EVS-EN 15476:2009
Total P2O5	%wt	15.00% min	EVS-EN 15476:2011/EVS-EN 15959
POTASSIUM (K2O), total	%wt	15.00% min	EVS-EN 15477:2009
Moisture (H2O)	%wt		EVS-EN 12049:2000
Granulometry, 1.00-4.00mm	%wt	15.00% min	ISO 8397

VISUAL: Free flowing and without Harmful materials at the time of loading

### UREA 46%- CHEMICAL ANALYSIS CONFIRMED

PARAMETER	SPECIFICATIONS	METHOD	RESULTS
Total NITROGEN (N)	46.0% min	AOAC 955.04	46.3%
Moisture	0.5% max	KARL FISHER	0.37%
Biuret	0.02% max	AOAC 960.04	0.01%
Granulometry, 2-4mm	90%min	Seiving (ASTM Mesh)	90.5%
Granulometry<2mm	5%max	Seiving (ASTM Mesh)	4.0%

VISUAL: The product is white, granular, free flowing, anitcacking, treated and free harmful substances

### NPKSB 12-20-18-5-1 CHEMICAL ANALYSIS

PARAMETER	TEST
AZOTE total (N%)	16,8
Phosphore assimilable (%P2O5)	28,06
Potassium (%K2O)	17,95
Matiere insoluble (Insoluble matter)	0,2
Sulphur ( % S)	4,94
BORE ( % B)	3,24
pH (1/20)	7,35
Humidity 130°C (%)	7

## **FERTILIZERS BAG CONDITIONING : EXEMPLE**

### **BAG EXTERIOR:**

#### **Component:**

Polypropylene strip/weave, double sided laminated (Beige, Blue colors) treated for UV rays protection.

#### **Manufacturing:**

Polypropylene resin with UV rays protection up to 1600 hours exposure tested with a 18 FT Atlas Device Fadeometer.

#### **Weaving:**

Circular weaving 12x10 by square inch. (645mm square)

#### **Size and weight:**

55 cmx 95cm (50 Kg)

#### **Weight per Square meter ( gr/m2)**

115gr/m2 around ( 80 gr/m2 weaved+ 35 gr/m2 lamination )

#### **Stretching at break: 35 %**

### **INTERIOR BAG:**

Interior Lining will be translucent polyethylene, low-density 60 to 70 microns thickness.

Stress cracking: High, resistance up to 1800hours ( ASTM standards )

Sizing: 57cm x 100 cm

Waste of bag: Welded/ soldered