



MAP OF LONDON

What you
know about

LONDON?

If the flag is up,
it means the Queen
is home.

What's this ?



Buckingham Palace

What's this ?



Beefeater (*guardians of the Tower*)

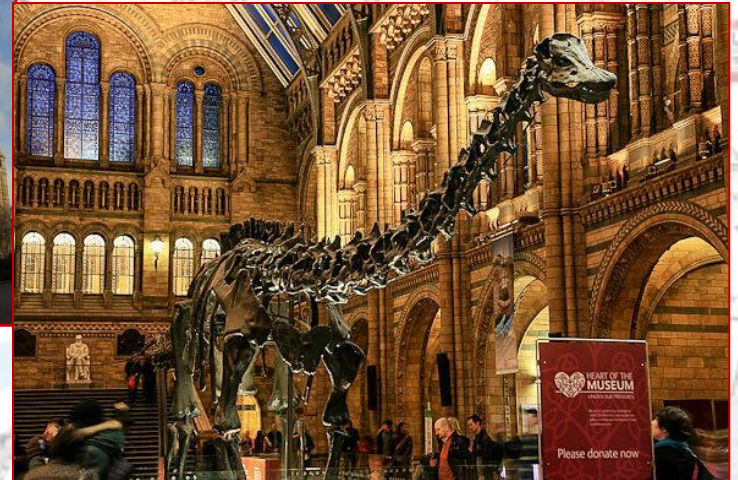
Ravens (*believed to protect the Crown*)

The Tower of London

(built around 1066 by William the Conqueror)



What's this ?



The Natural History Museum

What's this ?

MAP OF
LONDON



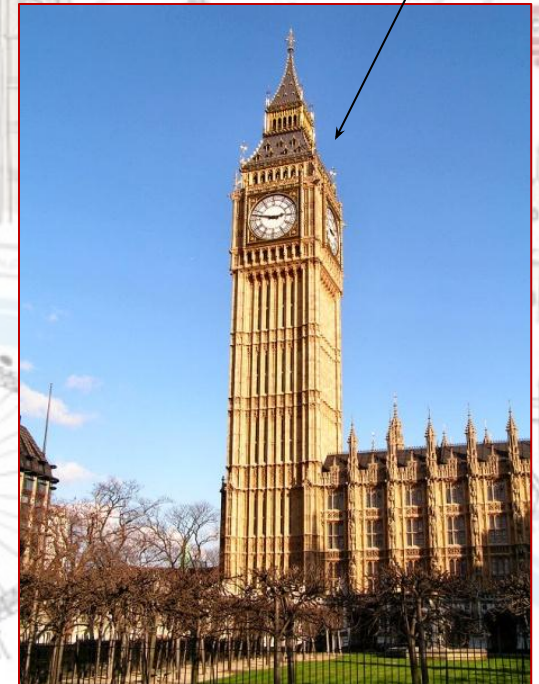
St Paul's
Cathedral

What's this ?



The Houses of Parliament /
The Palace of Westminster

Big Ben



What's this ?



Madame Tussauds

MAP OF
LONDON



What's this ?

The National Portrait Gallery



Trafalgar Square

Nelson's column

(built to honor the naval victory of Admiral Nelson over the French in 1805)



What's this ?



The British Museum

What's this ?

The London Eye



MAP OF
LONDON

Royal Albert Hall

BRICK LANE E.L.

Tower
London

What's this ?



The Globe

(built in 1599, destroyed by fire in 1613, rebuilt in 1614)



MAP OF
LONDON

What's this ?

Piccadilly Circus



What's this ?

10
Downing
Street



What's this ?



Tate Modern

What's this ?



Tower Bridge

Tower Bridge

What's this ?



Harrods

What's this ?



MAP OF
LONDON



Westminster Abbey

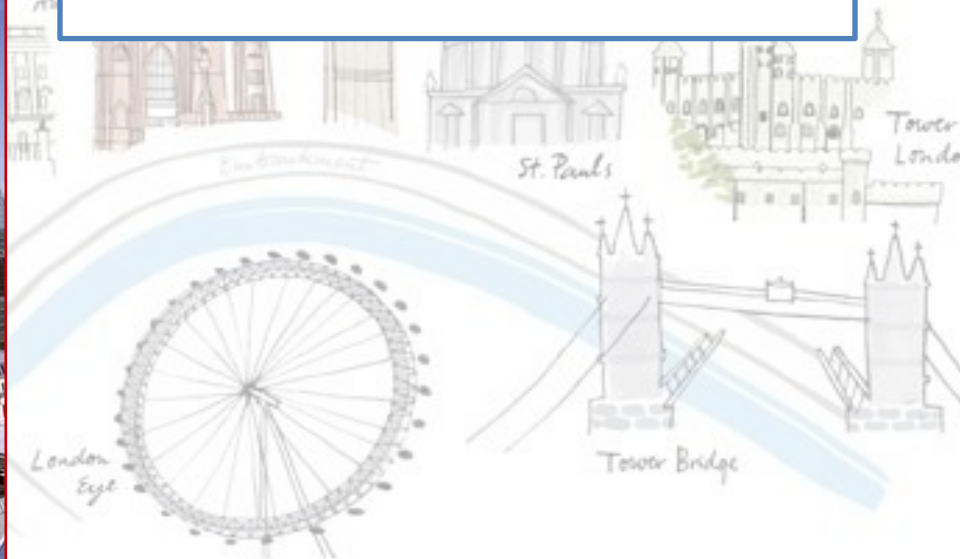


Tower Bridge

What are these ?
3 incredible buildings !



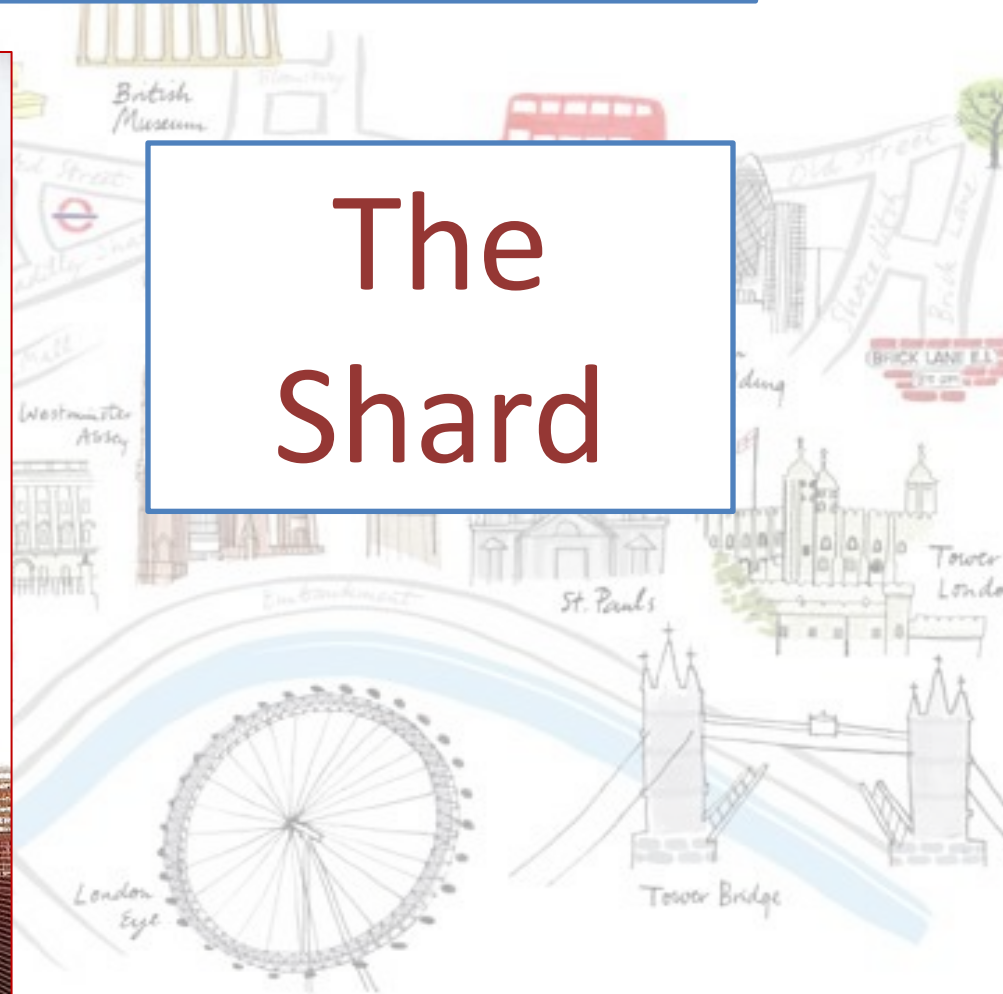
The
Walkie Talkie



What are these ?
3 incredible buildings !



The
Shard



What are these ?
3 incredible buildings !



The
Gherkin



KEEP
CALM
AND
GO TO
LONDON