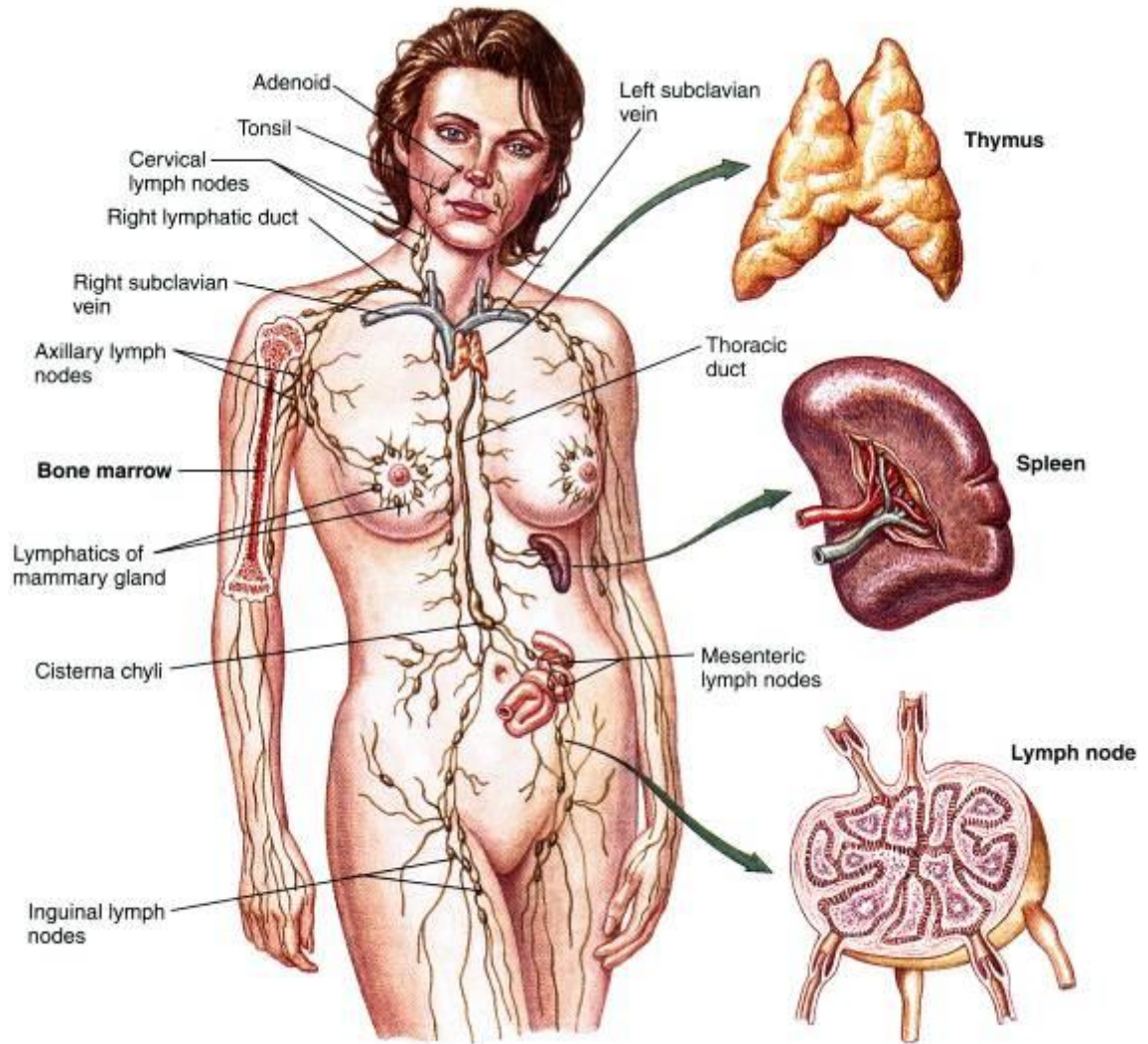
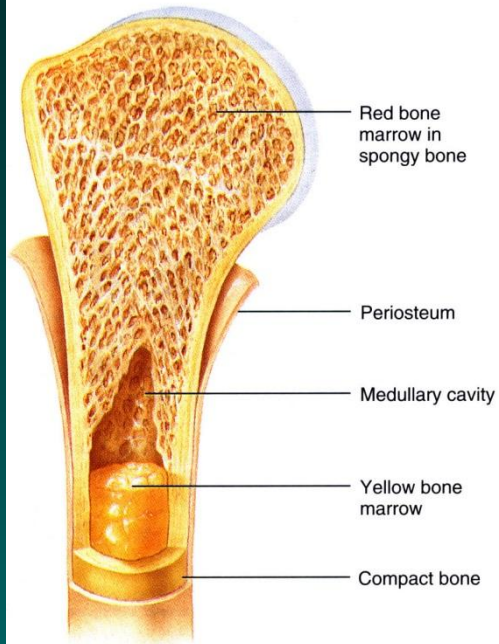
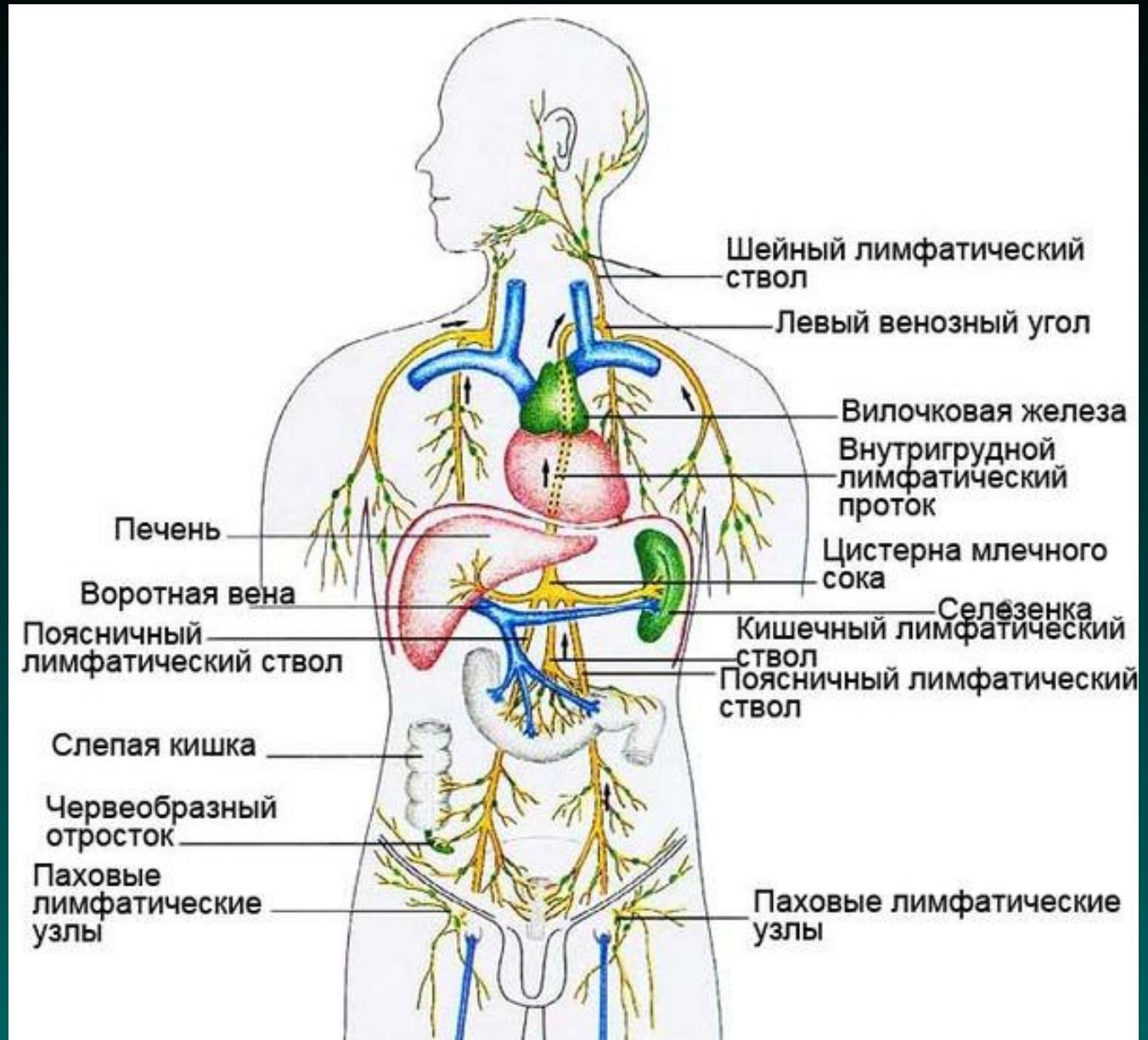




Імунна система

Органи імунної системи







ВИДИ ІМУНІТЕТУ

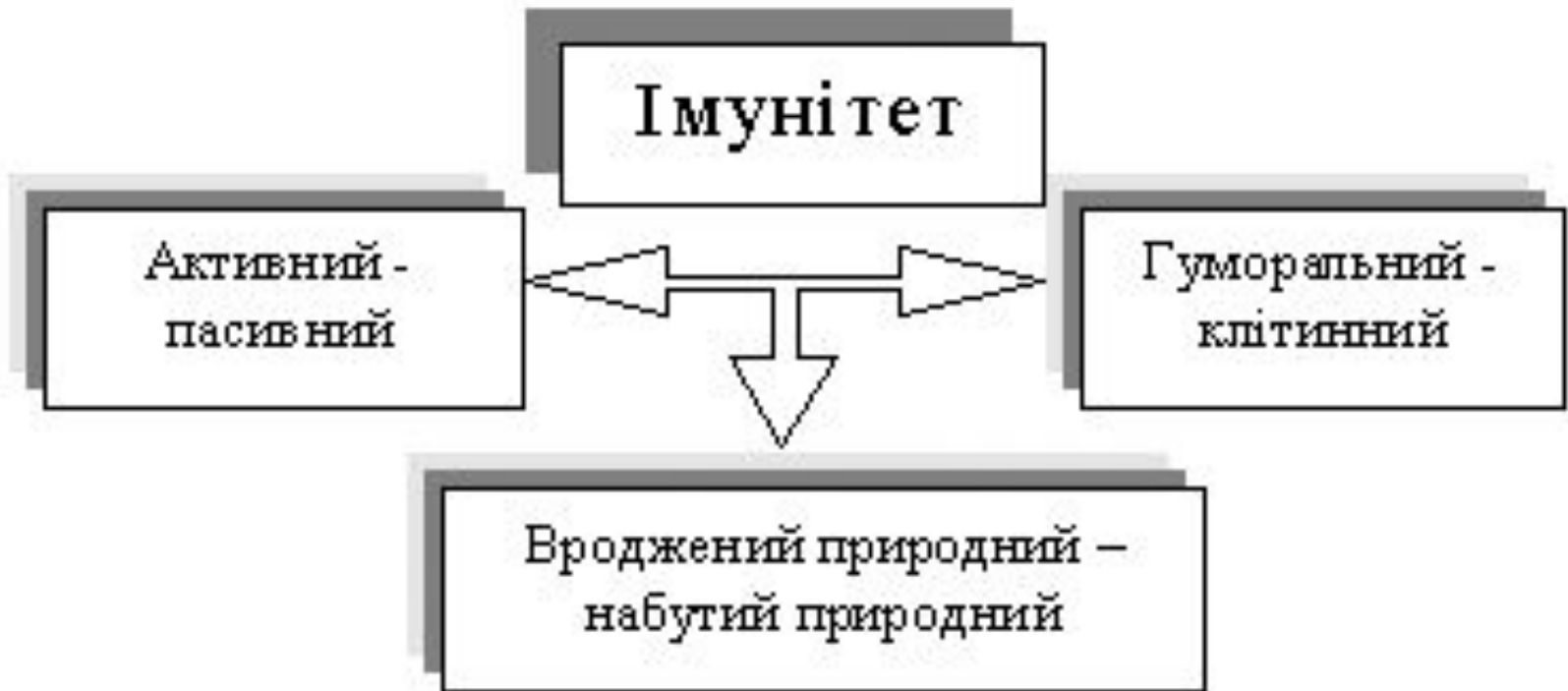
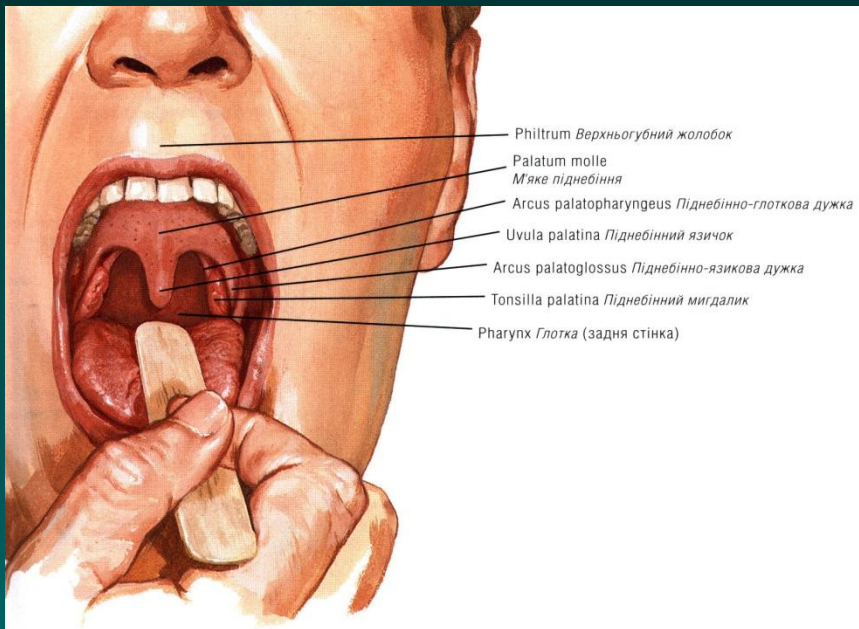
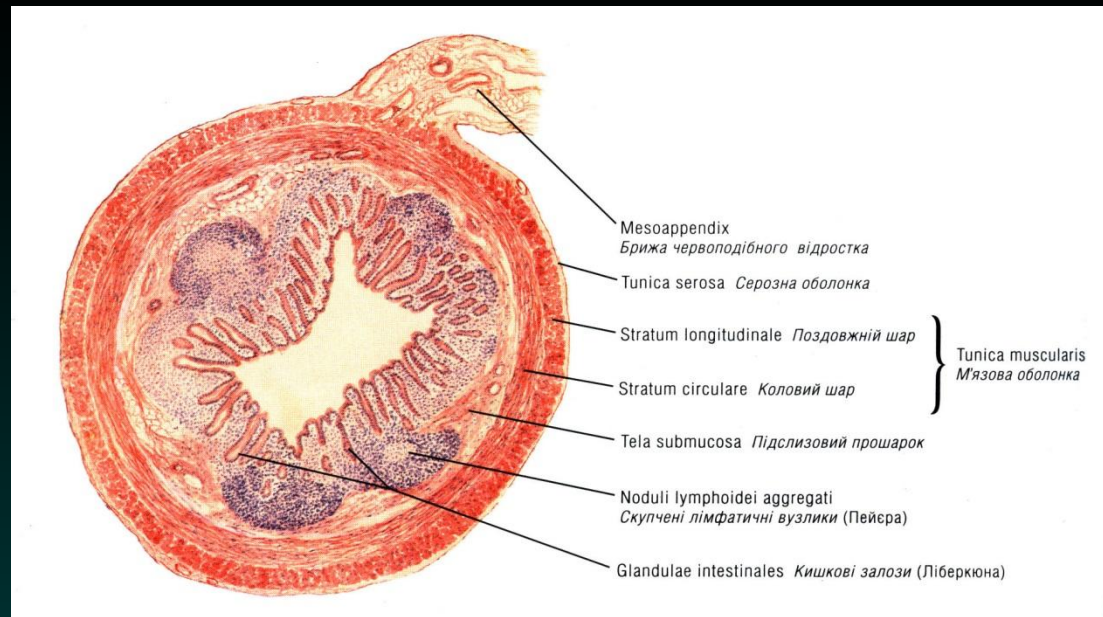
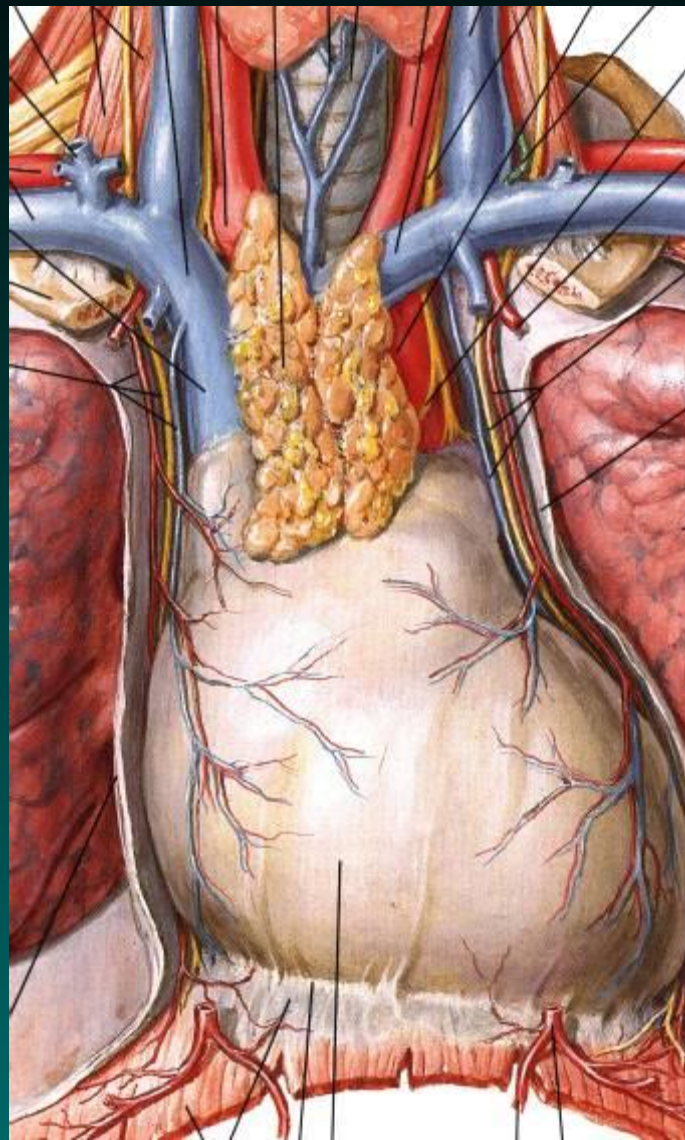


Рис. Види імунітету

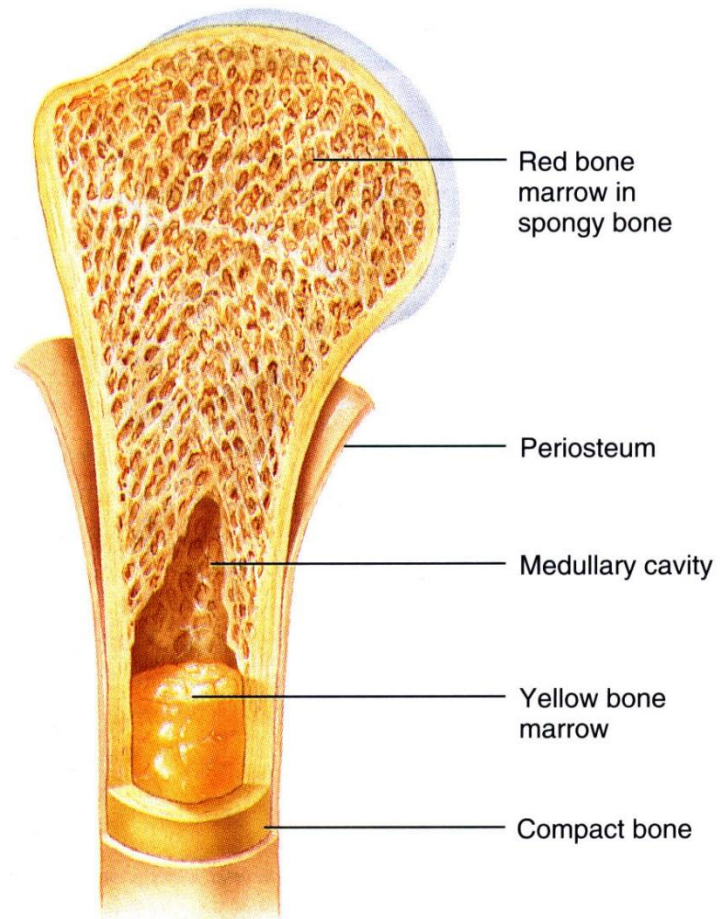


Тимус





Кістковий мозок





Regional lymph nodes:

Cervical nodes

Axillary nodes

Inguinal nodes

Entrance of right lymphatic duct into right subclavian vein

Internal jugular vein

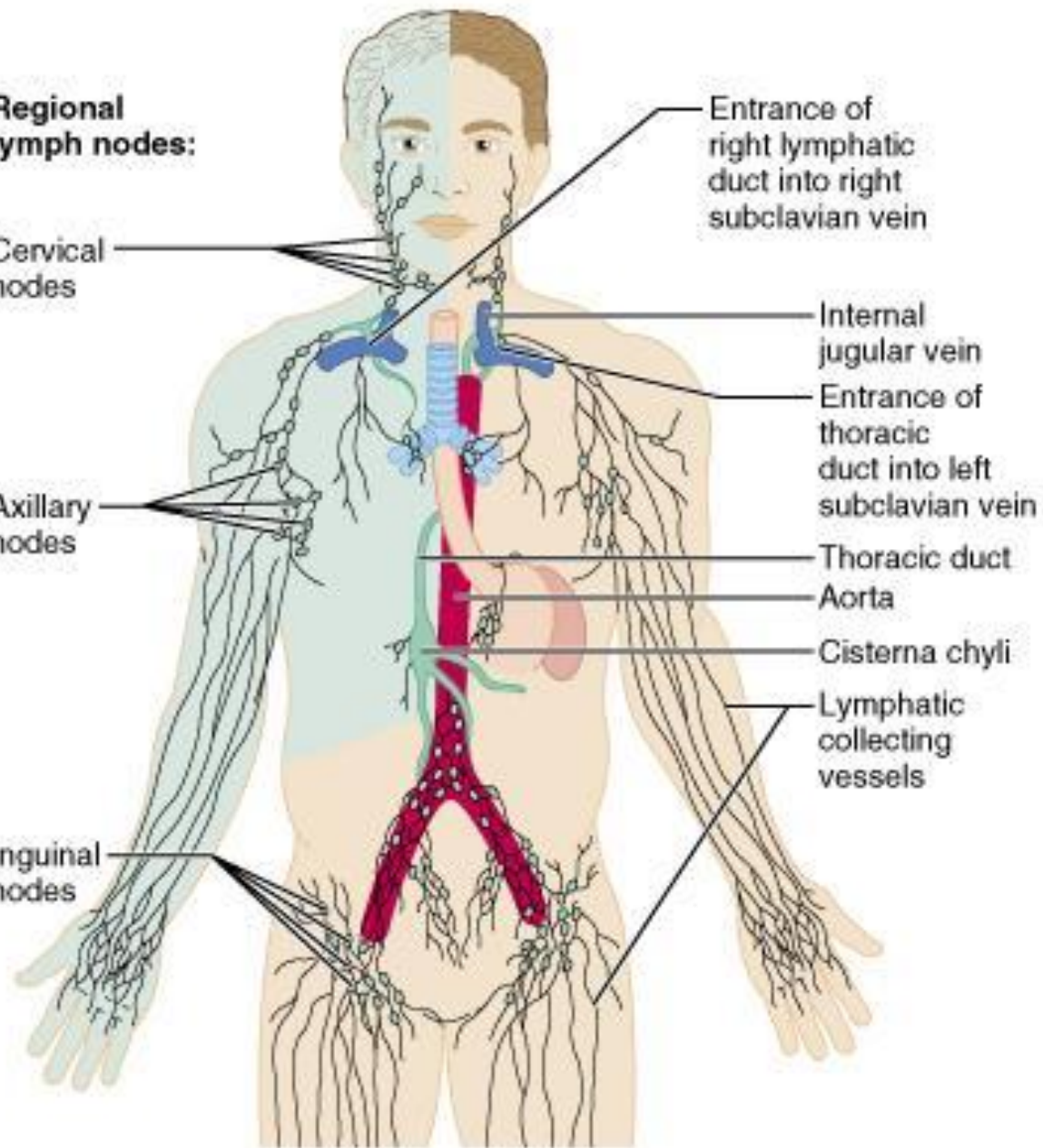
Entrance of thoracic duct into left subclavian vein

Thoracic duct

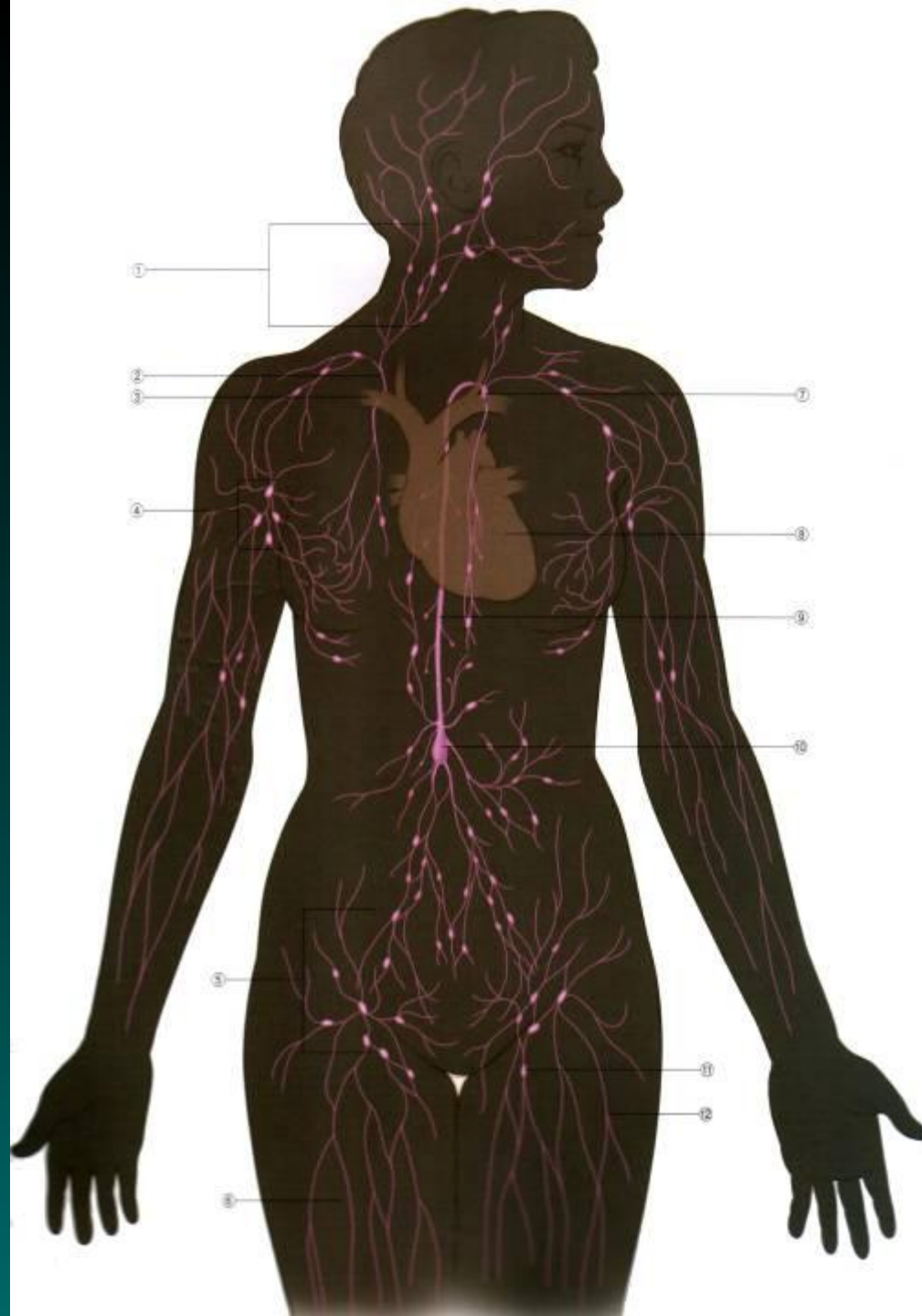
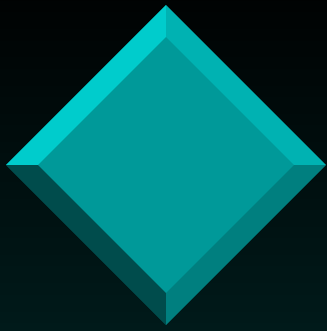
Aorta

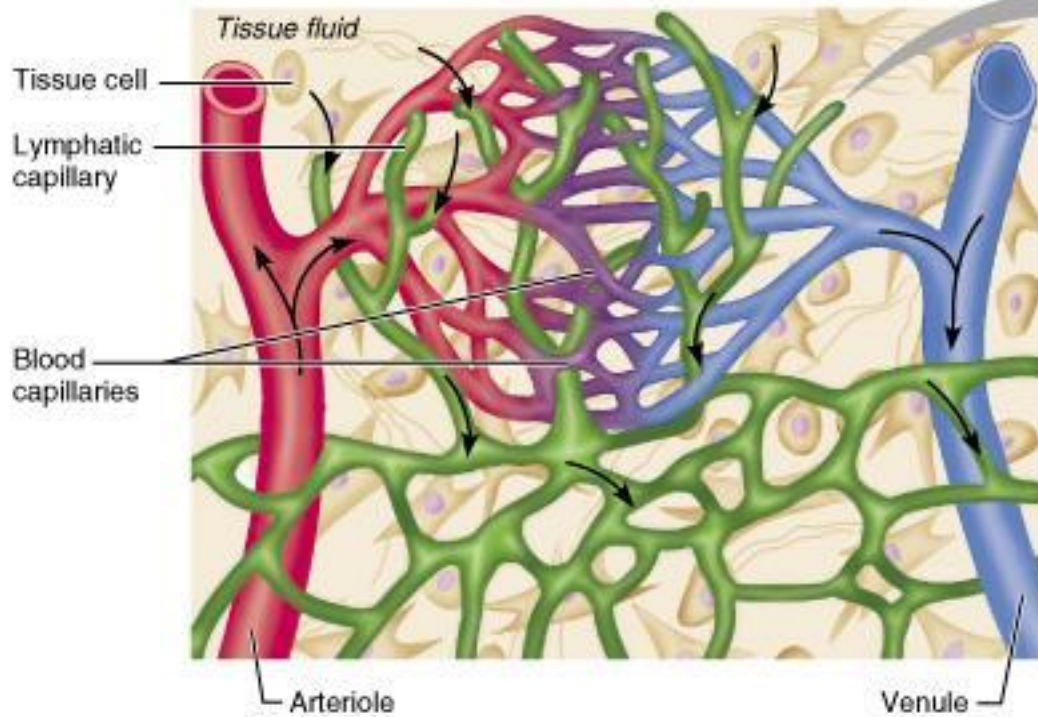
Cisterna chyli

Lymphatic collecting vessels



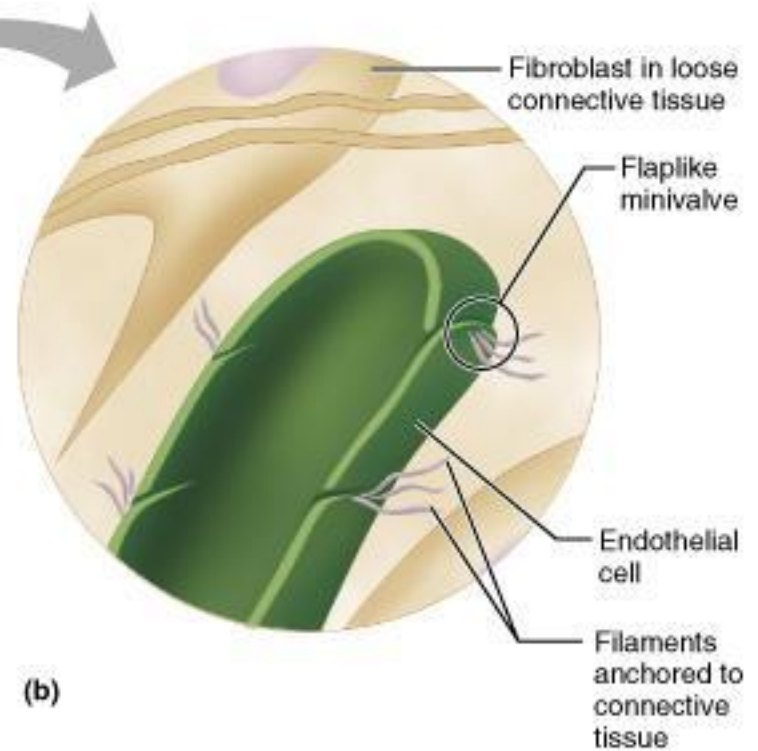
(a)





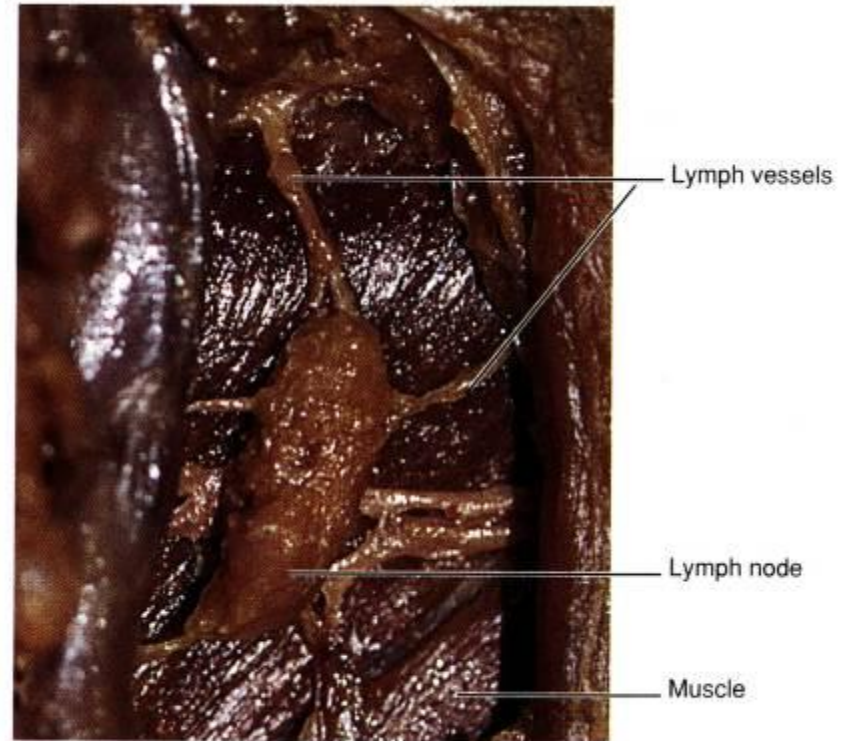
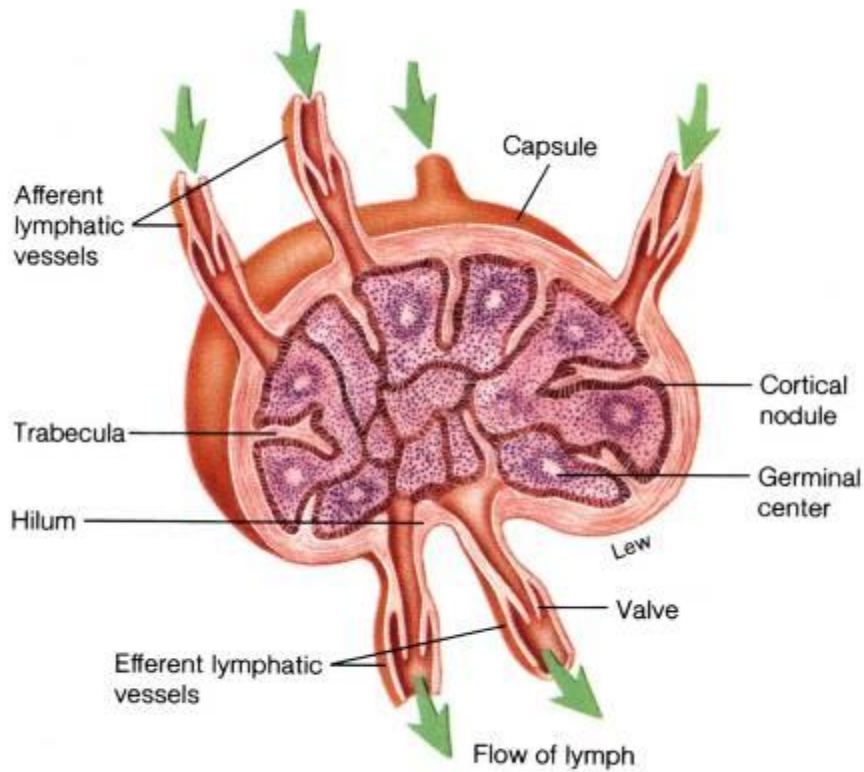
(a)

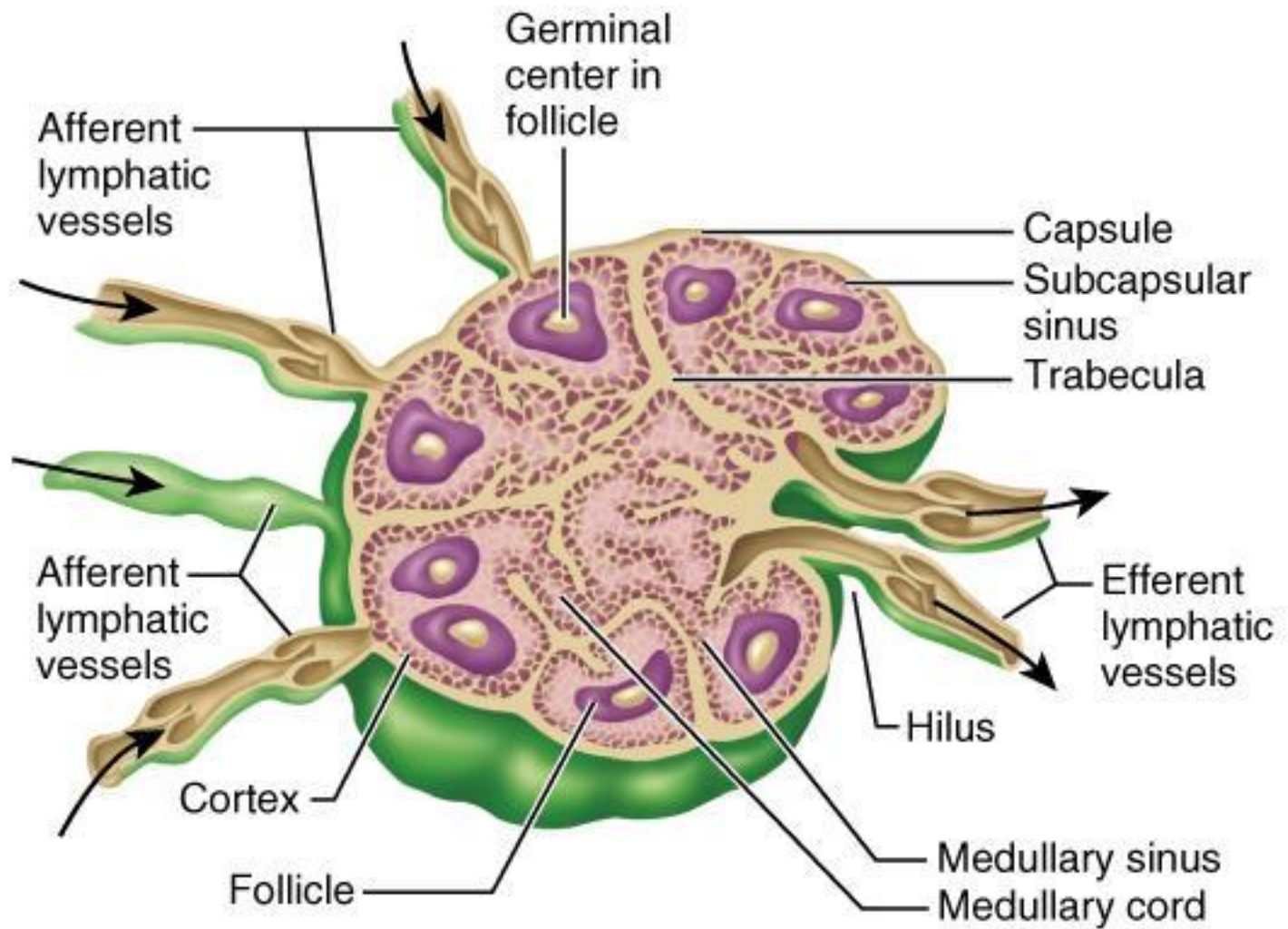
Copyright © 2001 Benjamin Cummings, an imprint of Addison Wesley Longman, Inc.





Будова лімфатичного вузла

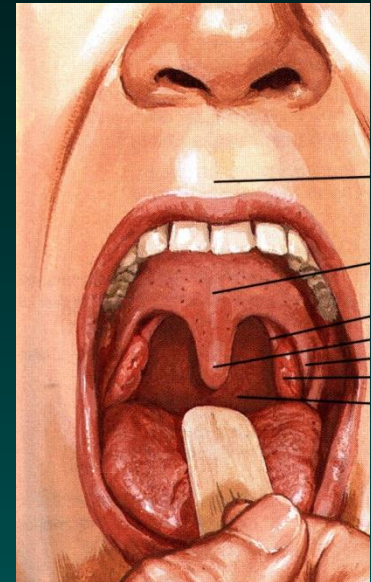
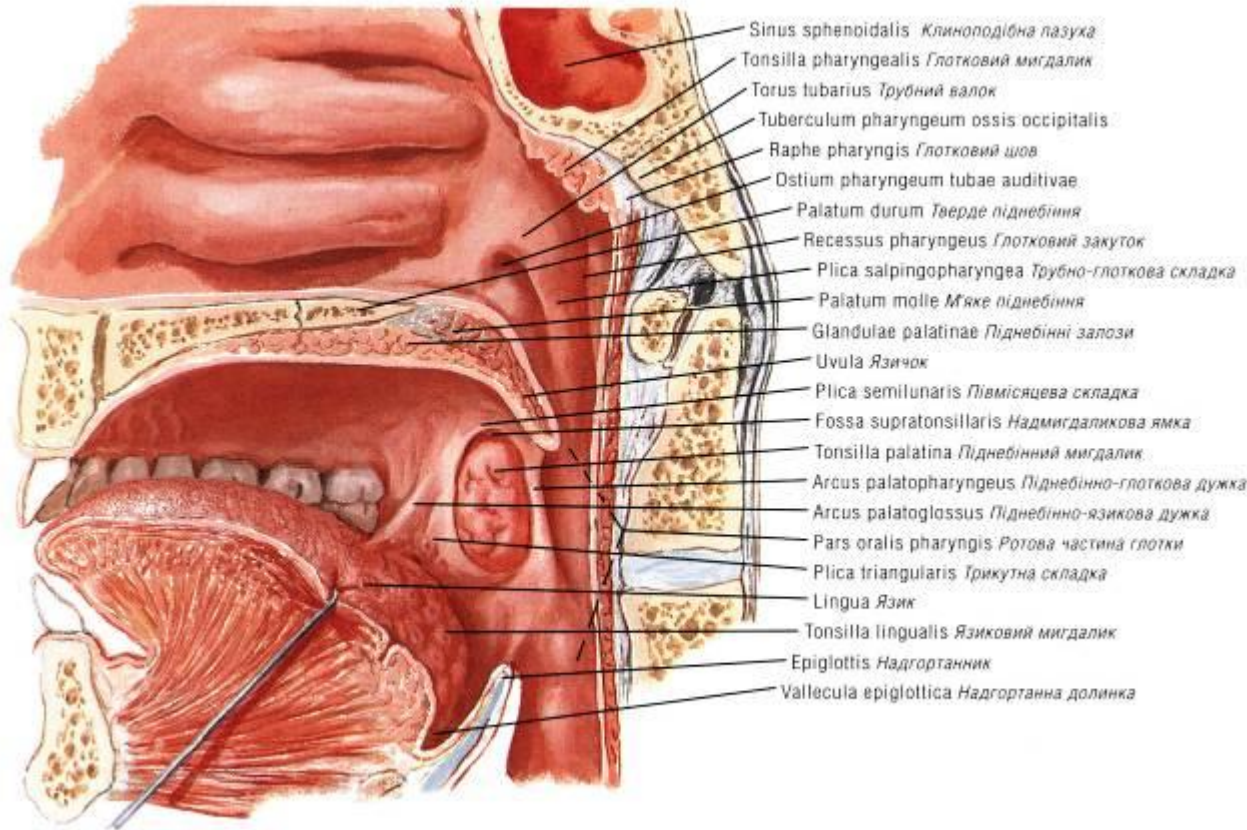




(a)

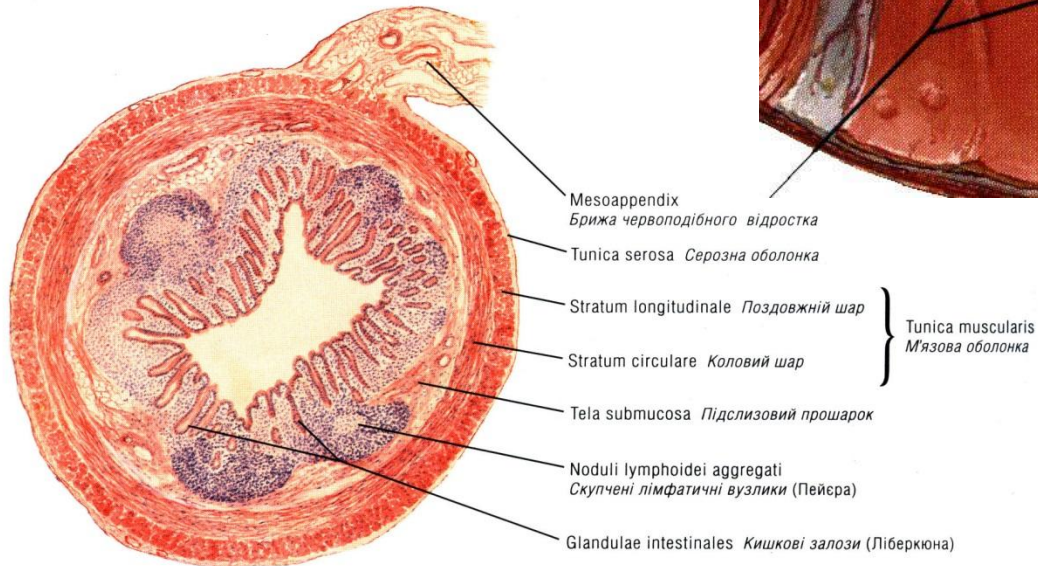
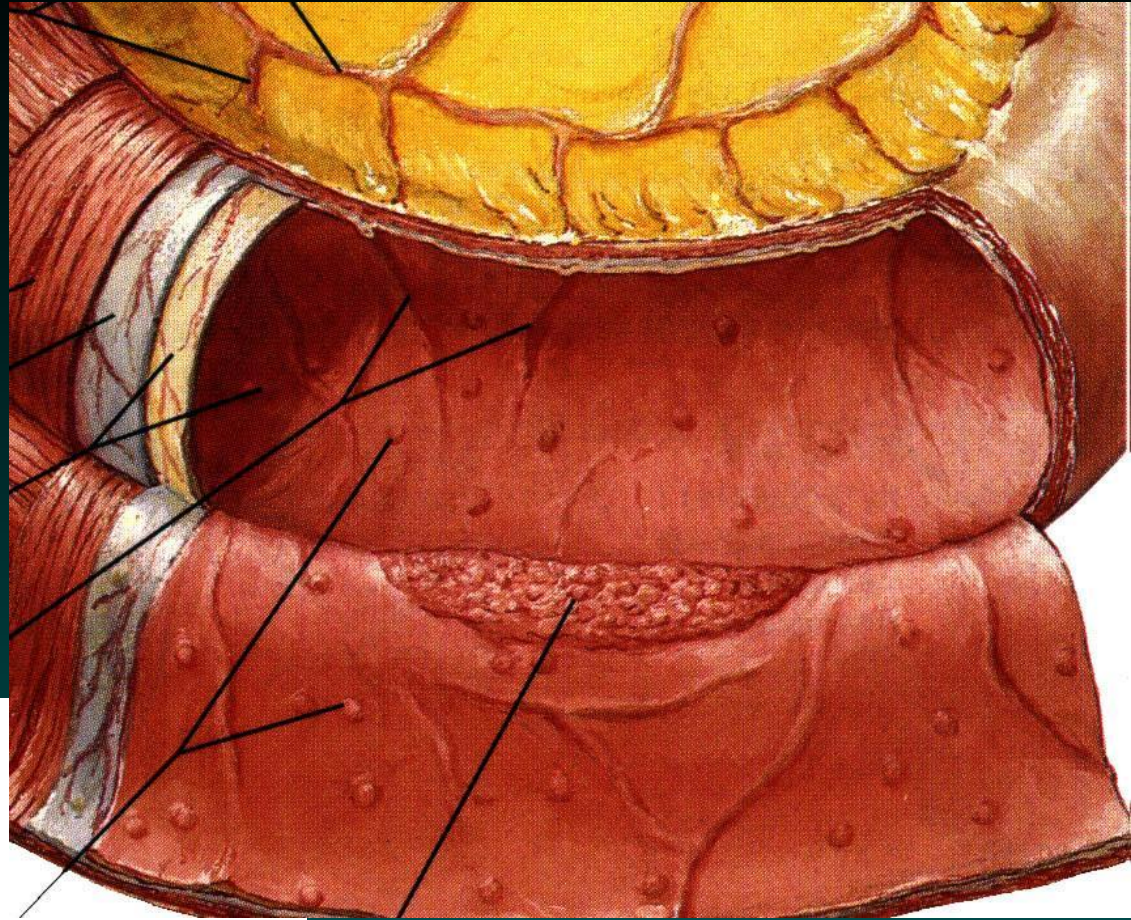


Кільце Пирогова-Вальдеєра

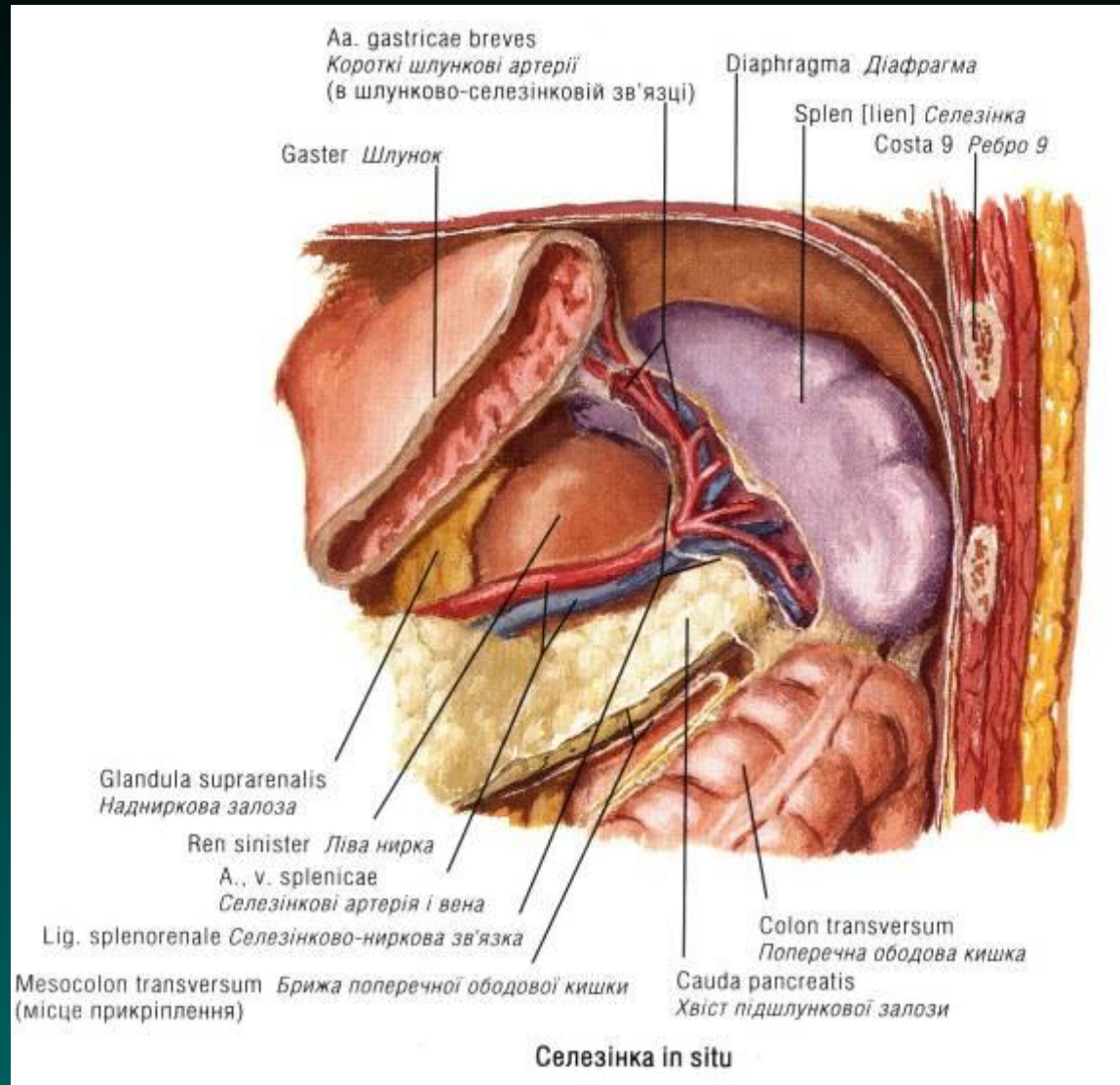




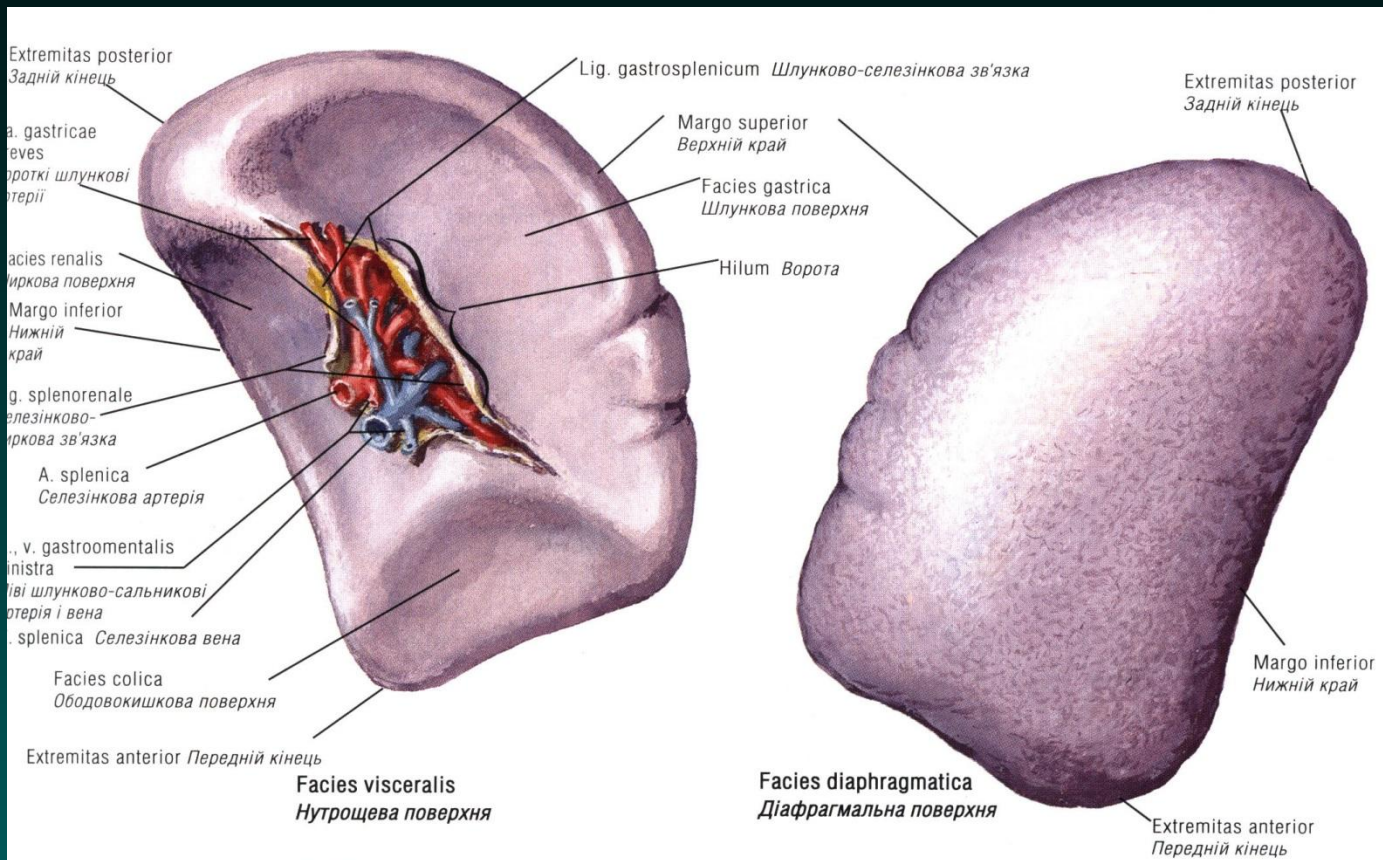
Лімфатичні вузлики травного тракту



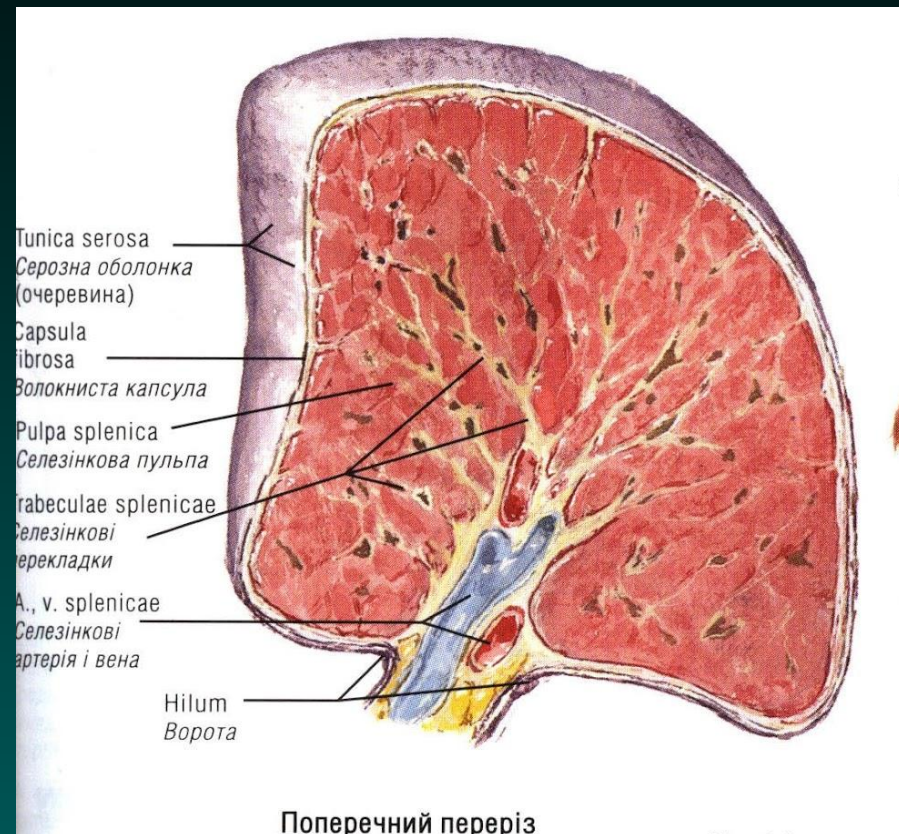
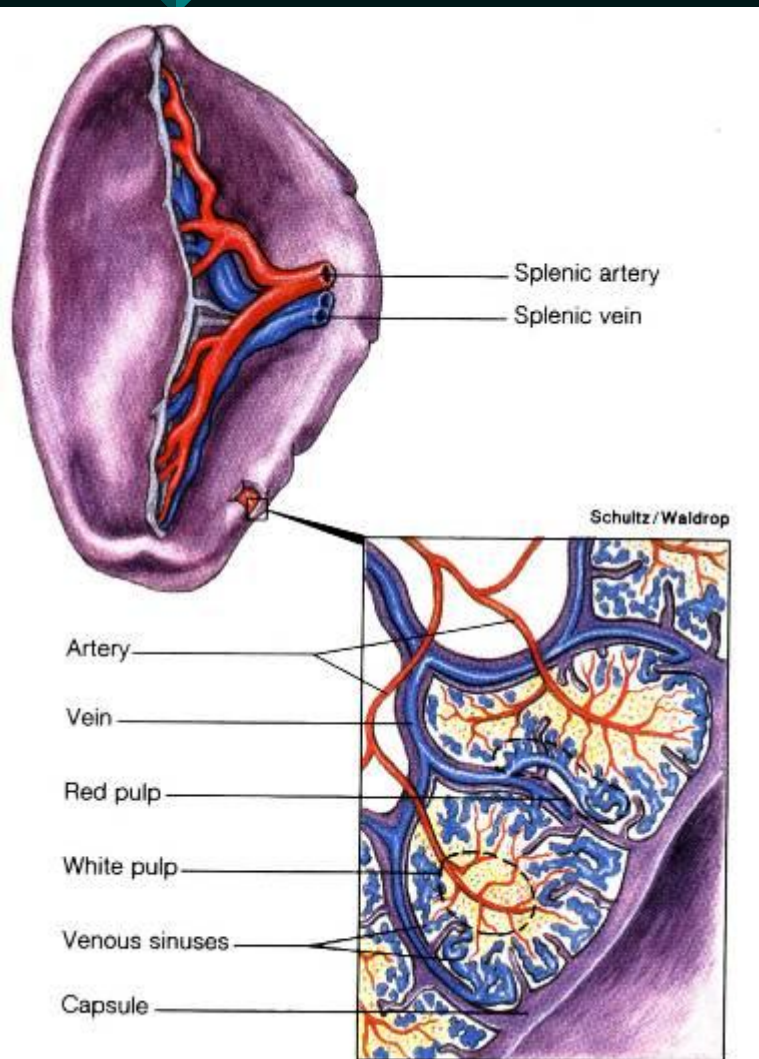
Селезінка



Селезінка



Будова селезінки





Лімфатичні вузли ділянок тіла

