

# THE HISTORY OF ARCHITECTURE

FROM PREHISTORIC TO MODERN TIMES



The twenty first Album:  
THE WORLD'S ARCHITECTURE  
OF THE 1920's



**Albums of characteristic examples for the Educational course**

**by Dr. Konstantin I.Samoilov**

Almaty, 2017

**This series of albums generated for information purposes of the Educational course "The General History of Architecture": 2 credits / 30 hours of lectures.**

Until the 1920's, examples are grouped by region. In this period, the phenomenon of a single world architectural process begins to manifest itself. Since the 1920's, examples have been grouped by decades.

**Thirty albums illustrate the following topics:**

- the 1<sup>st</sup> Album: EDUCATIONAL AND SCIENTIFIC-THEORETICAL SOURCES
- the 2<sup>nd</sup> Album: THE PREHISTORIC ERA'S ARCHITECTURE
- the 3<sup>rd</sup> Album: THE ANCIENT EGYPTIAN ARCHITECTURE
- the 4<sup>th</sup> Album: THE ANCIENT MESOPOTAMIAN ARCHITECTURE
- the 5<sup>th</sup> Album: THE ANCIENT GREEK ARCHITECTURE
- the 6<sup>th</sup> Album: THE ANCIENT ROMAN ARCHITECTURE
- the 7<sup>th</sup> Album: THE MEDIEVAL EUROPEAN ARCHITECTURE
- the 8<sup>th</sup> Album: THE EUROPEAN RENAISSANCE'S ARCHITECTURE
- the 9<sup>th</sup> Album: THE MEDIEVAL MAGHREB'S, THE NEAR EASTERN AND THE CAUCASUS'S ARCHITECTURE
- the 10<sup>th</sup> Album: THE MEDIEVAL CENTRAL ASIAN ARCHITECTURE
- the 11<sup>th</sup> Album: THE ANCIENT AND MEDIEVAL CHINESE ARCHITECTURE
- the 12<sup>th</sup> Album: THE MEDIEVAL SOUTHEASTERN AND EASTERN ASIAN ARCHITECTURE
- the 13<sup>th</sup> Album: THE MEDIEVAL CENTRAL AMERICAN ARCHITECTURE
- the 14<sup>th</sup> Album: THE EASTERN EUROPE MIDDLE AGES AND NEW TIMES ARCHITECTURE
- the 15<sup>th</sup> Album: THE WESTERN EUROPEAN AND THE NORTH AMERICAN NEW TIMES ARCHITECTURE

- the 16<sup>th</sup> Album: THE WORLD'S ARCHITECTURE OF THE 1870's
- the 17<sup>th</sup> Album: THE WORLD'S ARCHITECTURE OF THE 1880's
- the 18<sup>th</sup> Album: THE WORLD'S ARCHITECTURE OF THE 1890's
- the 19<sup>th</sup> Album: THE WORLD'S ARCHITECTURE OF THE 1900's
- the 20<sup>th</sup> Album: THE WORLD'S ARCHITECTURE OF THE 1910's
- **the 21<sup>st</sup> Album: THE WORLD'S ARCHITECTURE OF THE 1920's**
- the 22<sup>nd</sup> Album: THE WORLD'S ARCHITECTURE OF THE 1930's
- the 23<sup>rd</sup> Album: THE WORLD'S ARCHITECTURE OF THE 1940's
- the 24<sup>th</sup> Album: THE WORLD'S ARCHITECTURE OF THE 1950's
- the 25<sup>th</sup> Album: THE WORLD'S ARCHITECTURE OF THE 1960's
- the 26<sup>th</sup> Album: THE WORLD'S ARCHITECTURE OF THE 1970's
- the 27<sup>th</sup> Album: THE WORLD'S ARCHITECTURE OF THE 1980's
- the 28<sup>th</sup> Album: THE WORLD'S ARCHITECTURE OF THE 1990's
- the 29<sup>th</sup> Album: THE WORLD'S ARCHITECTURE OF THE 2000's
- the 30<sup>th</sup> Album: THE WORLD'S ARCHITECTURE OF THE 2010's

Examples are distributed in chronological order of the construct completion.

**Images sources are indicated directly near with illustrations on each page.**

Architects and companies listed on the basis of aggregate data from different sources (for some objects from various sources indicate different authors). About some buildings listed authors in the available sources has not yet been found.

The Author expresses his gratitude to Internet resources – <https://www.google.com> ; <https://www.wikipedia.org> – which to provide the ability to collect an information.

*The 21<sup>st</sup> Album's front cover:*

**The HSBC Building / the Municipal Government Building, Shanghai, China, 1923 (Arch. “Palmer & Turner Architects and Surveyors”) - [https://upload.wikimedia.org/wikipedia/commons/4/4e/HSBC Building, the Bund, Shanghai.jpg](https://upload.wikimedia.org/wikipedia/commons/4/4e/HSBC_Building_the_Bund_Shanghai.jpg)**

**The "Einstein Tower" astrophysical observatory, Potsdam, Germany, 1924 (Arch. Erich Mendelsohn) - [https://upload.wikimedia.org/wikipedia/commons/3/36/Einsteinturm\\_7443.jpg](https://upload.wikimedia.org/wikipedia/commons/3/36/Einsteinturm_7443.jpg)**

**The Fagus Factory / Fagus Werk, Alfeld on the Leine, Germany, 1925 (Arch. Walter Adolph Georg Gropius, Adolf Meyer) - <https://classconnection.s3.amazonaws.com/805/flashcards/4719805/jpg/13-143E094974B1578FC55.jpg>**

**The Mel'nikov's mansion, Moscow, USSR, 1929 (Arch. Konstantin S. Mel'nikov) - [http://a1.images.divisare.com/images/dpr\\_1.0\\_f\\_auto,q\\_auto,w\\_800/v1439370638/tydjm1au9iniohndu2z/konstantin-stepanovich-melnikov-cemal-emden-melnikov-house.jpg](http://a1.images.divisare.com/images/dpr_1.0_f_auto,q_auto,w_800/v1439370638/tydjm1au9iniohndu2z/konstantin-stepanovich-melnikov-cemal-emden-melnikov-house.jpg)**

**Purpose of the 21<sup>st</sup> Lecture:**

To study the basic features of the World architecture in 1920's.

**Tasks of the 21<sup>st</sup> Lecture:**

- To consider characteristic examples of specifically organized spaces and buildings;
- To accentuate the features of construction depending on the availability of building materials;
- To emphasize the difference between cult and dwelling buildings.

**Tasks for the self-research work:**

1. Study the change in the nomenclature of buildings and structures during the evolution of the 1920's Architecture.
2. Analyze geometric parameters of main types of structures and buildings.

**Questions for the self-preparation:**

1. Accentuate the features of the USA's 1920's architecture
2. Accentuate the features of the European 1920's architecture

**Themes of abstracts (16 pages, 40 000 characters, A4 format):**

1. The evolution of the German 1920's Architecture
2. The evolution of the French 1920's Architecture
3. The evolution of the USSR 1920's Architecture

## Examples for the 21<sup>st</sup> Lecture:

- 21.1 The A.D.German Warehouse, Richland Center, Wisconsin, USA, 1921 (Arch. Frank Lloyd Wright)
- 21.2 The ARBED building, Luxembourg City, Luxembourg, 1922 (Arch. René Théry)
- 21.3 The Banco Bilbao Vizcaya, Madrid, Spain, 1923 (Arch. Ricardo Bastida)
- 21.4 The HSBC Building / the Municipal Government Building, Shanghai, China, 1923 (Arch. "Palmer & Turner Architects and Surveyors")
- 21.5 The Women's City Club building, Detroit, Michigan, USA, 1924 (Arch. William B.Stratton; "Waldrige & Aldinger")
- 21.6 The "Einstein Tower" astrophysical observatory, Potsdam, Germany, 1924 (Arch. Erich Mendelsohn)
- 21.7 The Fagus Factory / Fagus Werk, Alfeld on the Leine, Germany, 1925 (Arch. Walter Adolph Georg Gropius, Adolf Meyer)
- 21.8 The USSR's Pavilion / International Exhibition of Modern Decorative and Industrial Arts, Paris, France, 1925 (Arch. Konstantin S.Mel'nikov)
- 21.9 The German Pavilion / World Exhibition, Barcelona, Spain, 1929 (Arch. Ludwig Mies Van Der Rohe)
- 21.10 The Mel'nikov's mansion, Moscow, USSR, 1929 (Arch. Konstantin S.Mel'nikov)

## 21.1 The A.D. German Warehouse, Richland Center, Wisconsin, USA, 1921 (Arch. Frank Lloyd Wright)



Source: [https://upload.wikimedia.org/wikipedia/commons/ffe/A.D. German Warehouse view from SE.jpg](https://upload.wikimedia.org/wikipedia/commons/ffe/A.D._German_Warehouse_view_from_SE.jpg) ; [https://upload.wikimedia.org/wikipedia/commons/thumb/c/c1/ADG\\_1.jpg/1280px-ADG\\_1.jpg](https://upload.wikimedia.org/wikipedia/commons/thumb/c/c1/ADG_1.jpg/1280px-ADG_1.jpg) ; [https://upload.wikimedia.org/wikipedia/commons/0/06/Frank Lloyd Wright designed A. D. German Warehouse in Richland Center Wisconsin - column detail.jpg](https://upload.wikimedia.org/wikipedia/commons/0/06/Frank_Lloyd_Wright_designed_A._D._German_Warehouse_in_Richland_Center_Wisconsin_-_column_detail.jpg) ; <http://chicagoatnight.wttw.com/sites/default/files/field/image/FLW%20young%20cropped.JPG>

**21.2 The ARBED building, Luxembourg City, Luxembourg, 1922  
(Arch. René Théry)**



Source: [https://upload.wikimedia.org/wikipedia/commons/4/4d/Luxembourg\\_Arcelor\\_Mittal.jpg](https://upload.wikimedia.org/wikipedia/commons/4/4d/Luxembourg_Arcelor_Mittal.jpg)



### 21.3 The Banco Bilbao Vizcaya, Madrid, Spain, 1923 (Arch. Ricardo Bastida)



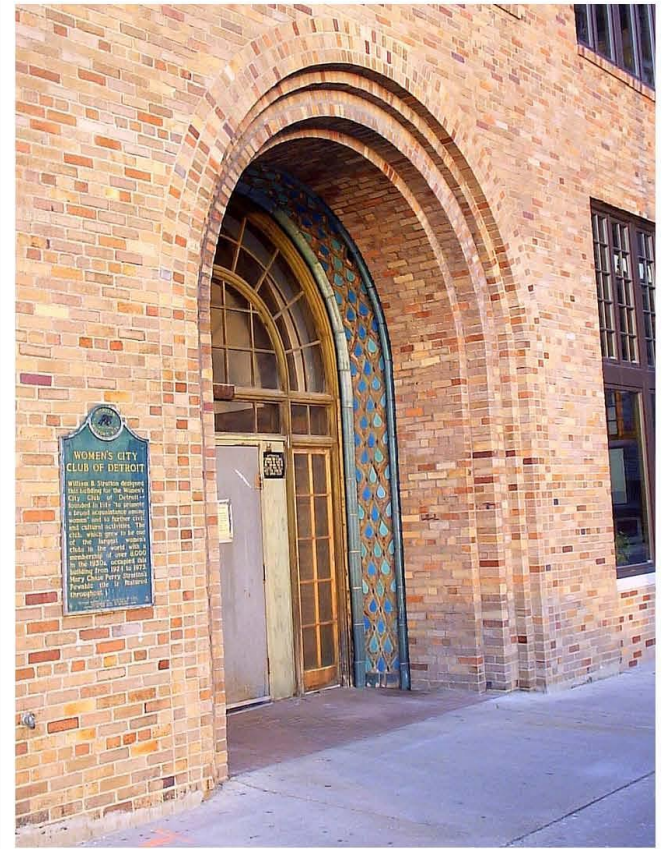
Source: [https://upload.wikimedia.org/wikipedia/commons/2/25/BBVA\\_Building\\_in\\_Madrid.jpg](https://upload.wikimedia.org/wikipedia/commons/2/25/BBVA_Building_in_Madrid.jpg) ; [http://4.bp.blogspot.com/-qZXamxAorow/T8BtcJVgGUI/AAAAAAAAAUQ/VG7rITTpQ3M/s1600/IMG\\_1668.JPG](http://4.bp.blogspot.com/-qZXamxAorow/T8BtcJVgGUI/AAAAAAAAAUQ/VG7rITTpQ3M/s1600/IMG_1668.JPG) ; [http://www.forasterarquitectos.com/wp-content/uploads/2015/09/Bastida\\_retrato\\_red.jpg](http://www.forasterarquitectos.com/wp-content/uploads/2015/09/Bastida_retrato_red.jpg)

## 21.4 The HSBC Building / the Municipal Government Building, Shanghai, China, 1923 (Arch. "Palmer & Turner Architects and Surveyors")



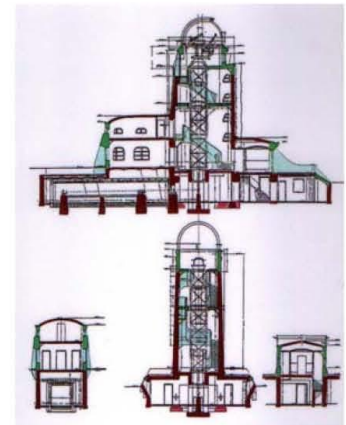
Source: [https://upload.wikimedia.org/wikipedia/commons/4/4e/HSBC\\_Building\\_the\\_Bund\\_Shanghai.jpg](https://upload.wikimedia.org/wikipedia/commons/4/4e/HSBC_Building_the_Bund_Shanghai.jpg) ; [https://qph.ec.quoracdn.net/main-qimg-8a1b7e73e736f76ef432748d61565270-c?convert\\_to\\_webp=true](https://qph.ec.quoracdn.net/main-qimg-8a1b7e73e736f76ef432748d61565270-c?convert_to_webp=true) ; <https://upload.wikimedia.org/wikipedia/commons/thumb/1/16/Hsbcroof.JPG/250px-Hsbcroof.JPG>

## 21.5 The Women's City Club building, Detroit, Michigan, USA, 1924 (Arch. William B.Stratton; "Waldridge & Aldinger")



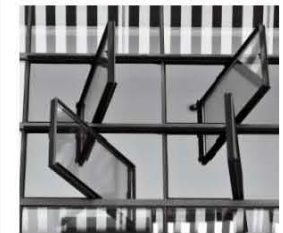
Source: <http://www.detroit1701.org/Graphics/Women's%20City%20Club.jpg> ; <http://2.bp.blogspot.com/sz9RARq3LvM/TBr83mnvQBI/AAAAAAAAABM4/atVOLfCrzs/s1600/DSCN1282.JPG> ;  
[https://c1.staticflickr.com/1/154/437097398\\_cd303b4e4e\\_b.jpg](https://c1.staticflickr.com/1/154/437097398_cd303b4e4e_b.jpg)

## 21.6 The "Einstein Tower" astrophysical observatory, Potsdam, Germany, 1924 (Arch. Erich Mendelsohn)



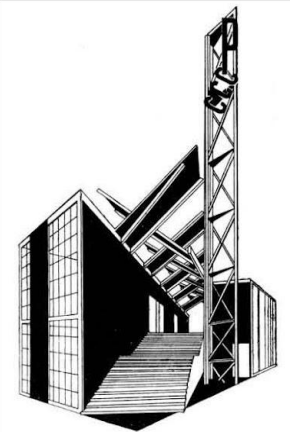
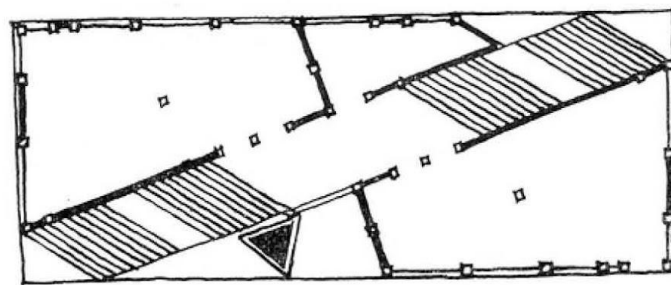
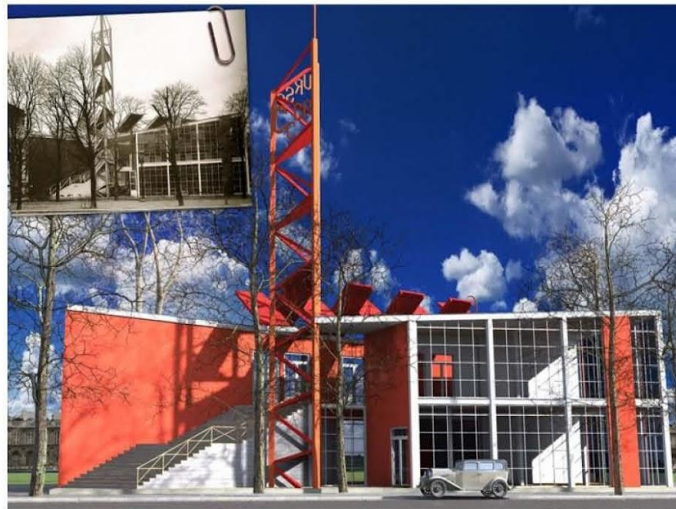
Source: [https://upload.wikimedia.org/wikipedia/commons/3/36/Einsteinturm\\_7443.jpg](https://upload.wikimedia.org/wikipedia/commons/3/36/Einsteinturm_7443.jpg) ; <http://churchthatmoves.com/wp-content/uploads/2007/09/einstein-tower.jpg> ;  
<http://www.2bplan.de/sites/default/files/styles/large/public/images/ML09-2.jpg?itok=az4oQEsR> ; [https://scontent.cdninstagram.com/t51.2885-15/s320x320/e35/13108498\\_1742588119315291\\_120822421\\_n.jpg?ig\\_cache\\_key=MTI1MjM3NDIxODI5ODYyNTIxOQ%3D%3D.2](https://scontent.cdninstagram.com/t51.2885-15/s320x320/e35/13108498_1742588119315291_120822421_n.jpg?ig_cache_key=MTI1MjM3NDIxODI5ODYyNTIxOQ%3D%3D.2) ; <http://www.aip.de/groups/soe/galerie/ausstellung/bilder/Schnitte.jpg> ;  
[https://upload.wikimedia.org/wikipedia/commons/thumb/ffe/Erich\\_Mendelsohn\\_cropped.jpg/220px-Erich\\_Mendelsohn\\_cropped.jpg](https://upload.wikimedia.org/wikipedia/commons/thumb/ffe/Erich_Mendelsohn_cropped.jpg/220px-Erich_Mendelsohn_cropped.jpg)

## 21.7 The Fagus Factory / Fagus Werk, Alfeld on the Leine, Germany, 1925 (Arch. Walter Adolph Georg Gropius, Adolf Meyer)



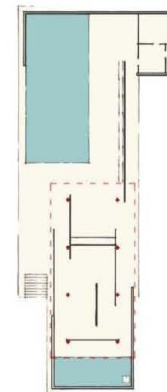
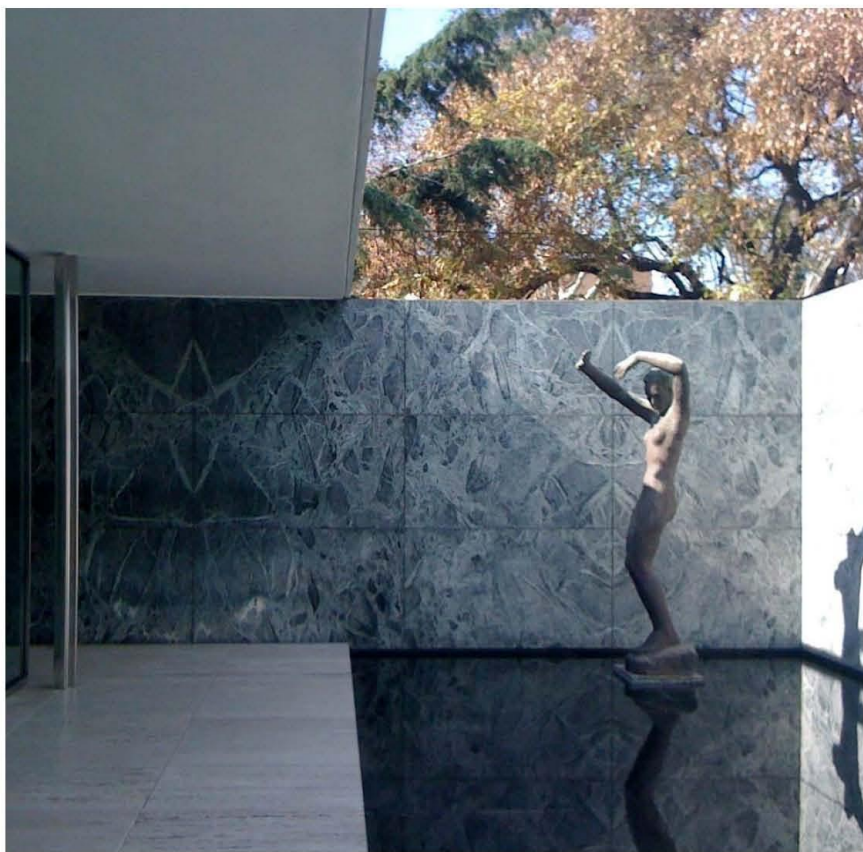
Source: <https://classconnection.s3.amazonaws.com/805/flashcards/4719805/jpg/13-143E094974B1578FC55.jpg> ;  
[http://images.adsttc.com/media/images/5415/8cb7/c07a/8016/d100/007a/large.jpg/14194660079\\_4c75a469e3\\_k.jpg?1410698406](http://images.adsttc.com/media/images/5415/8cb7/c07a/8016/d100/007a/large.jpg/14194660079_4c75a469e3_k.jpg?1410698406) ;  
<https://upload.wikimedia.org/wikipedia/commons/thumb/b/b5/WalterGropius-1919.jpg/220px-WalterGropius-1919.jpg> ;  
<https://image.iimcdn.com/app/cms/image/transf/none/path/s9f52c997f9dc437f/image/i5b8e6f4bbe53c0f6/version/1358787483/image.jpg>

## 21.8 The USSR's Pavilion / International Exhibition of Modern Decorative and Industrial Arts, Paris, France, 1925 (Arch. Konstantin S. Mel'nikov)



Source: <http://rubens.anu.edu.au/htdocs/laserdisk/0359/35979.JPG> ; <http://i068.radikal.ru/1307/93/5f25f8d36357.jpg> ; [http://img-fotki.vandex.ru/get/4528/1771339\\_148/0\\_8f636\\_660730fb\\_L.jpg](http://img-fotki.vandex.ru/get/4528/1771339_148/0_8f636_660730fb_L.jpg) ; <http://artyx.ru/books/item/f00/s00/z0000029/pic/000021.jpg> ; <http://static1.repo.aif.ru/1/f0/443311/c/9d0c768cb11207e056b526573929454e.jpg>

## 21.9 The German Pavilion / World Exhibition, Barcelona, Spain, 1929 (Arch. Ludwig Mies Van Der Rohe)



Source: [https://upload.wikimedia.org/wikipedia/commons/7/71/Planta\\_libre-pabell%C3%B3n\\_de\\_barcelona.png](https://upload.wikimedia.org/wikipedia/commons/7/71/Planta_libre-pabell%C3%B3n_de_barcelona.png) ; [http://bauhaus-online.de/files/imagecache/480h/bilder/501\\_931\\_barcelona\\_pavillon2\\_0.jpg](http://bauhaus-online.de/files/imagecache/480h/bilder/501_931_barcelona_pavillon2_0.jpg) ; <https://s-media-cache-ak0.pinning.com/236x/f3/ca/1b/f3ca1b9959dea79abb731301c771c6a.jpg>

**21.10 The Mel'nikov's mansion, Moscow, USSR, 1929  
(Arch. Konstantin S. Mel'nikov)**



Source: [http://a3.images.divisare.com/images/dpr\\_1.0.f\\_auto.g\\_auto.w\\_800/v1439370644/mjqr6ea0i3dvkwx3nk48/konstantin-stepanovich-melnikov-cemal-emden-melnikov-house.jpg](http://a3.images.divisare.com/images/dpr_1.0.f_auto.g_auto.w_800/v1439370644/mjqr6ea0i3dvkwx3nk48/konstantin-stepanovich-melnikov-cemal-emden-melnikov-house.jpg) ;  
[http://a1.images.divisare.com/images/dpr\\_1.0.f\\_auto.g\\_auto.w\\_800/v1439370638/tydjm1au9inihjinu2z/konstantin-stepanovich-melnikov-cemal-emden-melnikov-house.jpg](http://a1.images.divisare.com/images/dpr_1.0.f_auto.g_auto.w_800/v1439370638/tydjm1au9inihjinu2z/konstantin-stepanovich-melnikov-cemal-emden-melnikov-house.jpg) ;  
[http://theconstructivistproject.com/wp-content/uploads/2014/08/MelnikovHouse\\_9774\\_nm.jpg](http://theconstructivistproject.com/wp-content/uploads/2014/08/MelnikovHouse_9774_nm.jpg) ; [http://images.adsttc.com/media/images/5038/0f30/28ba/0d59/9b00/0be3/medium\\_jpg/stringio.jpg?1414198626](http://images.adsttc.com/media/images/5038/0f30/28ba/0d59/9b00/0be3/medium_jpg/stringio.jpg?1414198626) ;  
<http://ideaquide.ru/sites/default/files/styles/large/public/melnikhov.jpg?itok=FfOMGrk>



**Recommended educational and scientific-theoretical sources:**

1. *The General History of Architecture. In 2 volumes. = Всеобщая история архитектуры. В 2 томах. Гл. ред. Б.П.Михайлов. Том II. - Москва: Гос. Изд. лит. по стр., арх. и стр. мат., 1963. - 724 с.*
2. *The General History of Architecture. In 12 volumes. Volume 10: Architecture of the XIX - early XX centuries. = Всеобщая история архитектуры. В 12 томах. Том 10: Архитектура XIX - начала XX вв. / Под редакцией С. О. Хан-Магомедова (ответственный редактор), П.Н.Максимова, Ю. Ю. Савицкого. - 1972. - 592 с.*
3. *P & T Architects & Engineers Ltd. / From Wikipedia, the free encyclopedia. - [https://en.wikipedia.org/wiki/P\\_%26\\_T\\_Architects\\_%26\\_Engineers\\_Ltd](https://en.wikipedia.org/wiki/P_%26_T_Architects_%26_Engineers_Ltd)*
4. *Ludwig Mies van der Rohe / From Wikipedia, the free encyclopedia. - URL: [https://en.wikipedia.org/wiki/Ludwig\\_Mies\\_van\\_der\\_Rohe](https://en.wikipedia.org/wiki/Ludwig_Mies_van_der_Rohe)*
5. *Barcelona Pavilion. - URL: [https://en.wikipedia.org/wiki/Barcelona\\_Pavilion](https://en.wikipedia.org/wiki/Barcelona_Pavilion)*
6. *Konstantin Melnikov / From Wikipedia, the free encyclopedia. - URL: [https://en.wikipedia.org/wiki/Konstantin\\_Melnikov](https://en.wikipedia.org/wiki/Konstantin_Melnikov)*
7. *International Exhibition of Modern Decorative and Industrial Arts / From Wikipedia, the free encyclopedia. - URL: [https://en.wikipedia.org/wiki/International\\_Exhibition\\_of\\_Modern\\_Decorative\\_and\\_Industrial\\_Arts](https://en.wikipedia.org/wiki/International_Exhibition_of_Modern_Decorative_and_Industrial_Arts)*
8. *Walter Gropius / From Wikipedia, the free encyclopedia. - URL: [https://en.wikipedia.org/wiki/Walter\\_Gropius](https://en.wikipedia.org/wiki/Walter_Gropius)*
9. *Adolf Meyer (architect) / From Wikipedia, the free encyclopedia. - URL: [https://en.wikipedia.org/wiki/Adolf\\_Meyer\\_\(architect\)](https://en.wikipedia.org/wiki/Adolf_Meyer_(architect))*
10. *Fagus Factory. - URL: [https://en.wikipedia.org/wiki/Fagus\\_Factory](https://en.wikipedia.org/wiki/Fagus_Factory)*
11. *Erich Mendelsohn / From Wikipedia, the free encyclopedia. - URL: [https://en.wikipedia.org/wiki/Erich\\_Mendelsohn](https://en.wikipedia.org/wiki/Erich_Mendelsohn)*
12. *Einstein Tower. - URL: [https://en.wikipedia.org/wiki/Einstein\\_Tower](https://en.wikipedia.org/wiki/Einstein_Tower)*
13. *Women's City Club. - URL: [https://en.wikipedia.org/wiki/Women%27s\\_City\\_Club](https://en.wikipedia.org/wiki/Women%27s_City_Club)*
14. *HSBC Building, the Bund. - URL: [https://en.wikipedia.org/wiki/HSBC\\_Building,\\_the\\_Bund](https://en.wikipedia.org/wiki/HSBC_Building,_the_Bund)*
15. *Ricardo Bastida / From Wikipedia, the free encyclopedia. - URL: [https://en.wikipedia.org/wiki/Ricardo\\_Bastida](https://en.wikipedia.org/wiki/Ricardo_Bastida)*
16. *Banco de Bilbao. - URL: [https://es.wikipedia.org/wiki/Banco\\_de\\_Bilbao](https://es.wikipedia.org/wiki/Banco_de_Bilbao)*
17. *Frank Lloyd Wright / From Wikipedia, the free encyclopedia. - URL: [https://en.wikipedia.org/wiki/Frank\\_Lloyd\\_Wright](https://en.wikipedia.org/wiki/Frank_Lloyd_Wright)*
18. *A.D.German Warehouse / From Wikipedia, the free encyclopedia. - URL: [https://en.wikipedia.org/wiki/A.\\_D.\\_German\\_Warehouse](https://en.wikipedia.org/wiki/A._D._German_Warehouse)*
19. *ARBED building / From Wikipedia, the free encyclopedia. - URL: [https://en.wikipedia.org/wiki/ARBED\\_building](https://en.wikipedia.org/wiki/ARBED_building)*

## Briefly about the Author



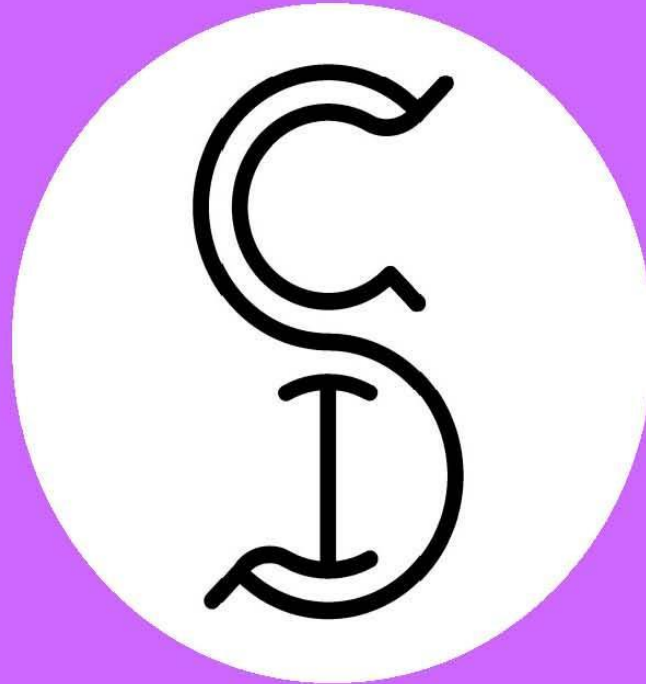
# Konstantin I.SAMOILOV

High Doctorate (Arch) – 2008,  
Doctor of Sciences (Arch) – 2004,  
Candidate of Sciences / eq. PhD(Arch) – 1990,  
Dipl.Arch. / eq. MArch – 1983,  
Dipl.Tech.Arch. / eq. BArch – 1977



**Associate Professor of the Architectural Faculty –**  
Kazakh Leading Academy of Architecture and Civil Engineering –  
**[www.kazgasa.kz](http://www.kazgasa.kz)**

E: [samconiv@yahoo.com](mailto:samconiv@yahoo.com) , [samconiv@mail.ru](mailto:samconiv@mail.ru)



THE HISTORY OF ARCHITECTURE FROM PREHISTORIC TO MODERN TIMES:  
Albums of characteristic examples for the Educational course / by Dr. Konstantin I.Samoilov. –  
The twenty first Album: THE WORLD'S ARCHITECTURE OF THE 1920's. – Almaty, 2017. – 18 p.