

Subordination is a system of official relations



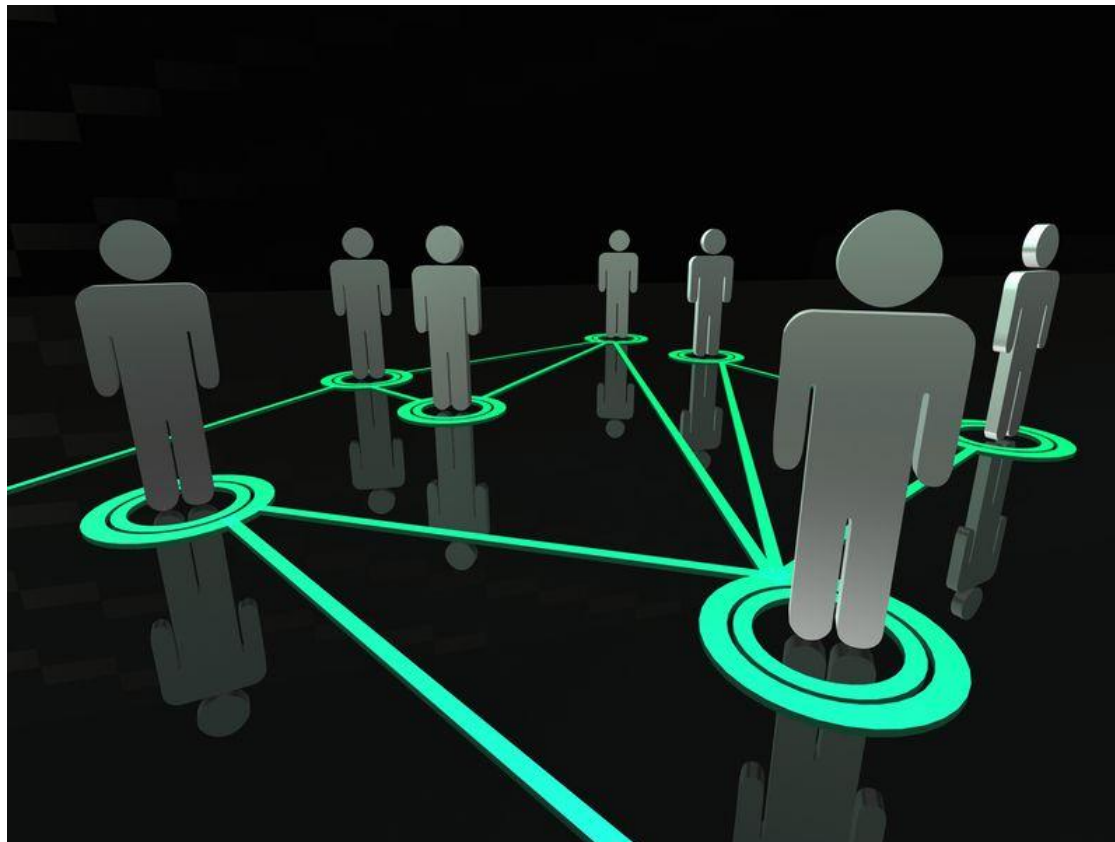
Or, if speak  
about it  
differently, the  
lower-level  
leader is  
subordinate to  
top-level  
managers



Managers of different levels and employees of the organization interact with each other, observing certain rules of behavior.



In communication with subordinates, the manager must be correct. Give orders should be given according to the rules.



**The concept of ethics is the study and applying of moral norms of people's behavior in society.**

Good relations with colleagues at work are built on simple rules of etiquette



Politeness is the base of successful relationships in life and at work.



With the words of gratitude and apology you express respect for your colleagues. Such words together with a pleasant smile will show you as a polite person and provide a kind respect to you.

