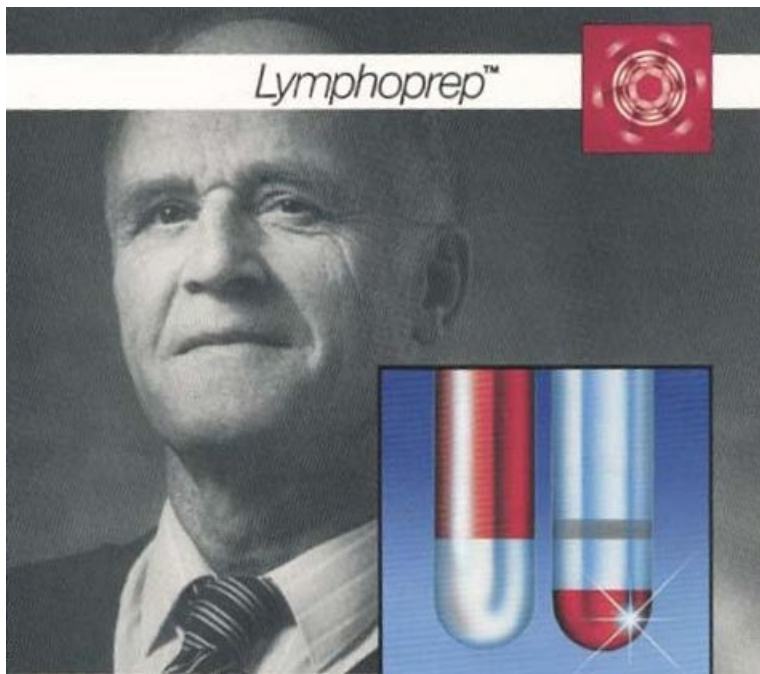
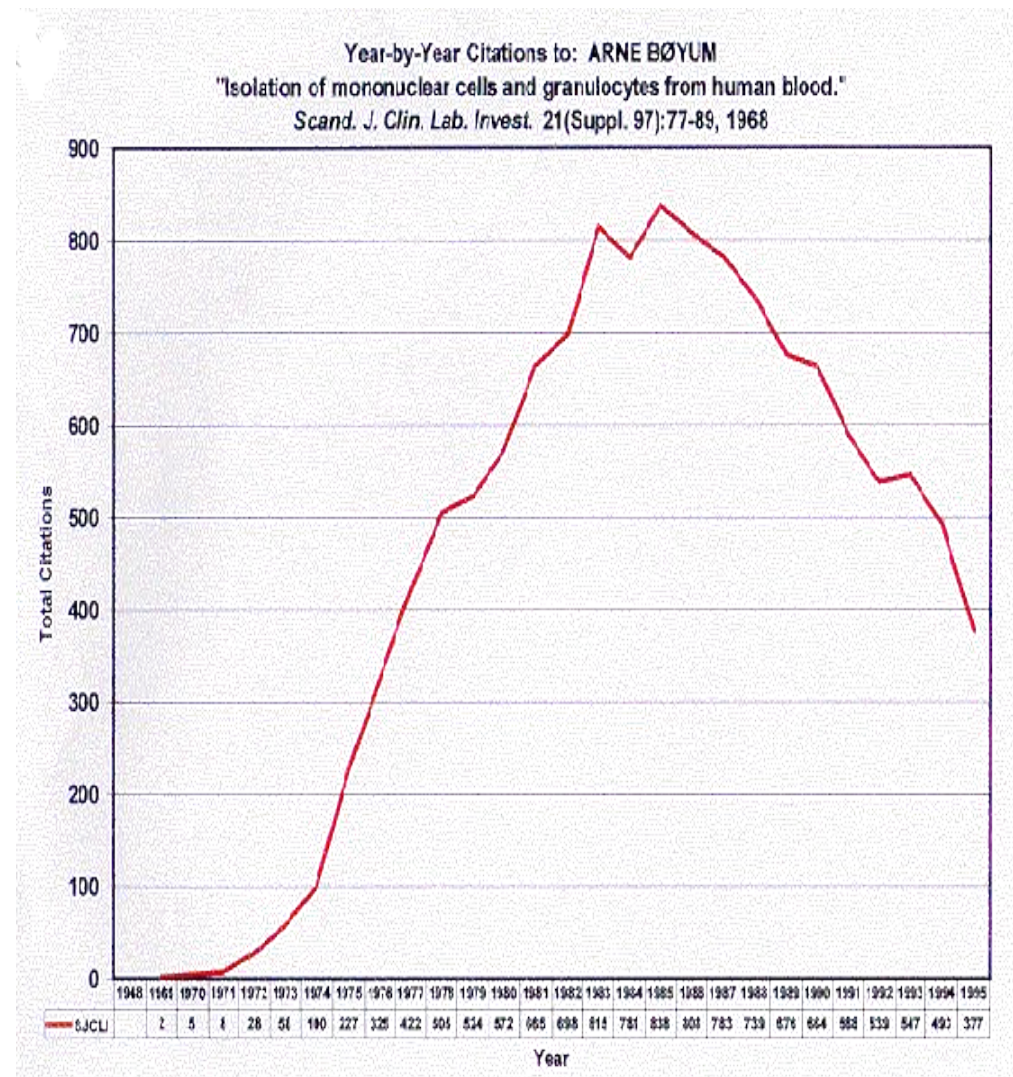


Автор метода выделения и разделения лейкоцитов периферической крови человека в градиенте плотности



Arne Bøyum
Division for Toxicology
Norwegian Defence
Research
Establishment
N-2007 Kjeller Norway



Метод выделения и разделения лейкоцитов периферической крови в градиенте плотности фиколл-гипак (фиколл-дитриазоат натрия, $d=1,077 \text{ г/см}^3$)



Arne Bøyum
Division for Toxicology
Norwegian Defence
Research
Establishment
N-2007 Kjeller Norway

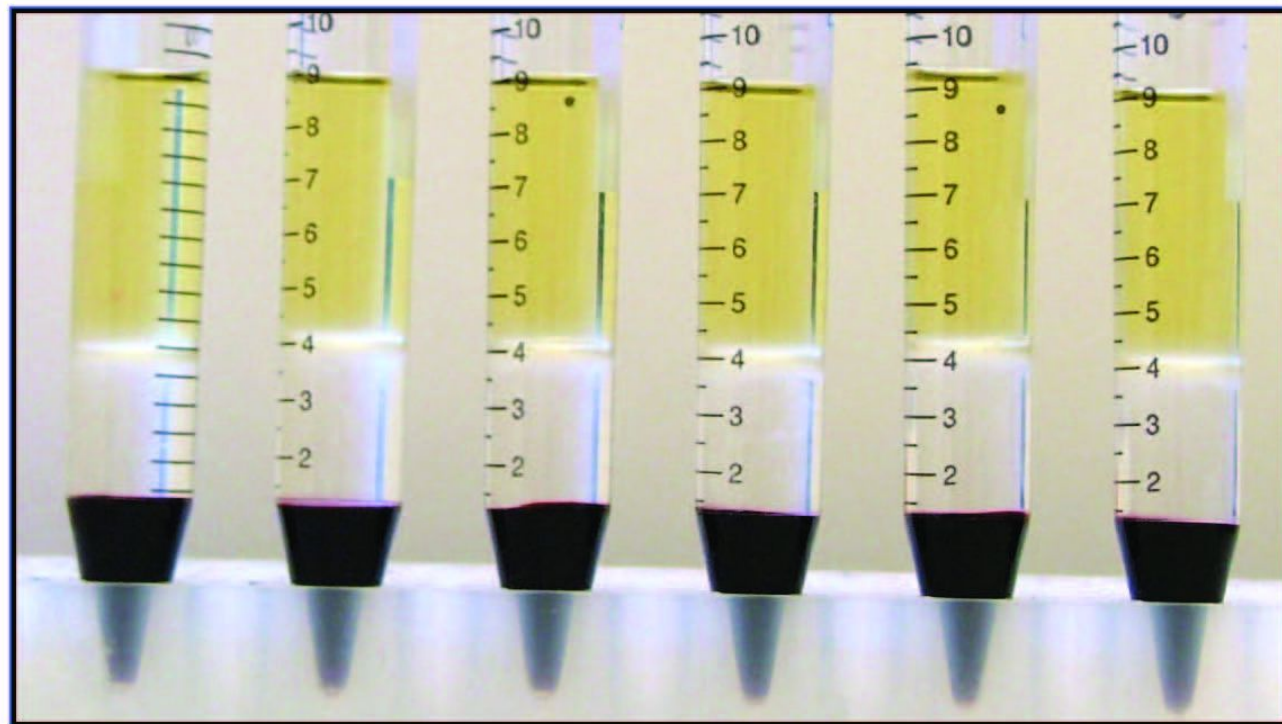
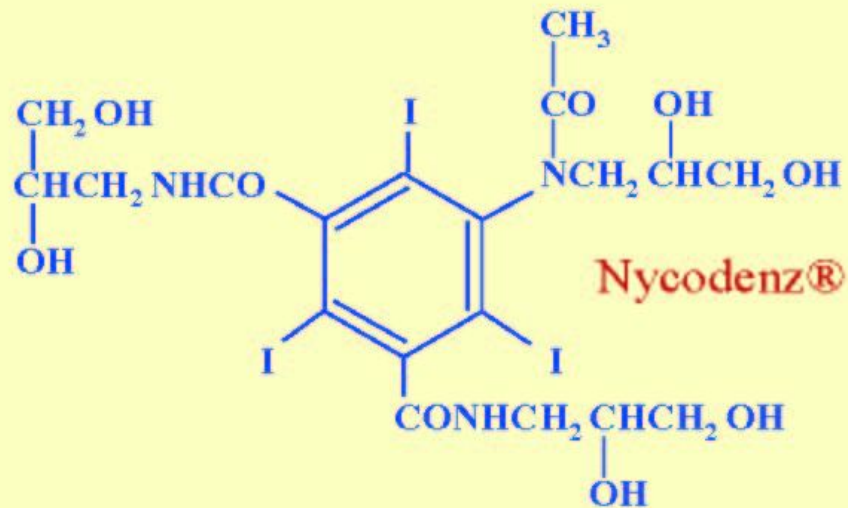
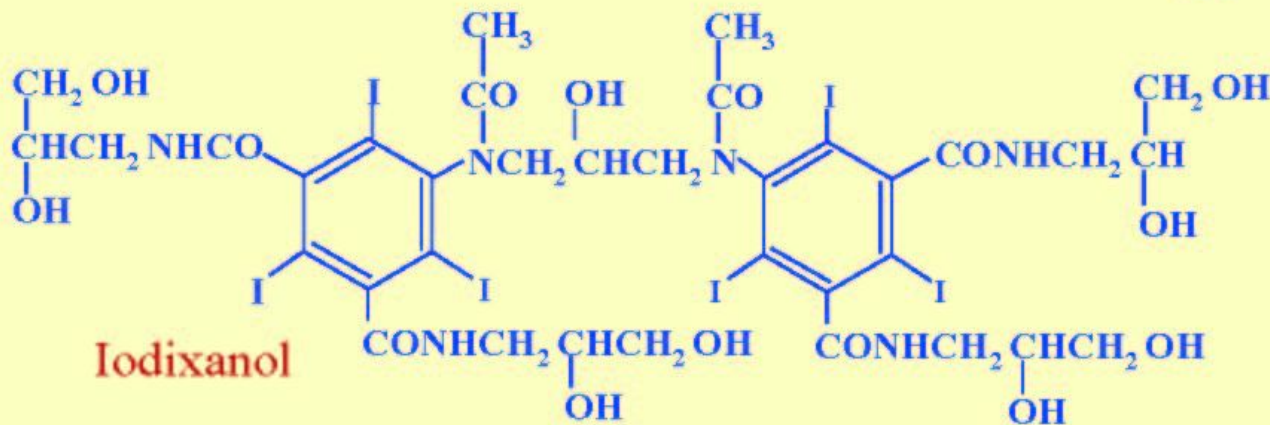


Figure 2: Purification of human PBMCs from six donors on *Lymphoprep*TM

Sodium diatrizoate



Nycodenz®



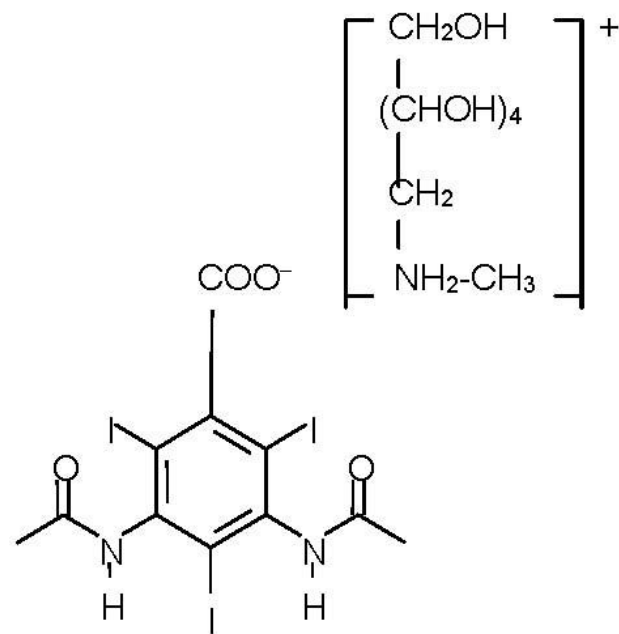
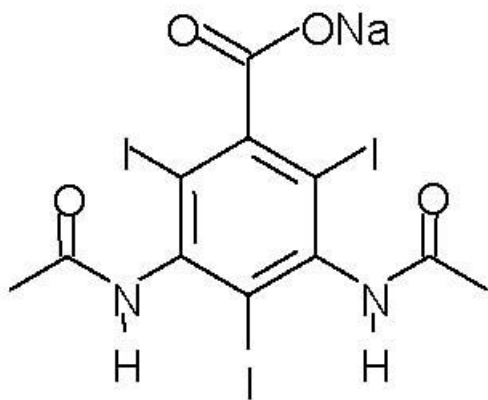
Iodixanol

Figure 1: Molecular structure of iodinated density gradient media

Верографин 76% СПОФА (Прага)

Смесь N-метил-D-глюкаминовой и натриевой солей диатриазоевой кислоты (3,5-бис-(ацетиламино)-2,4,6-трийодбензойной кислоты) (86,85:13,15%) в ампулах по 20 мл для инъекций. Аналог верографина - 76% раствор урографина выпускается Байер Шеринг Фарма АГ (Германия D-13342 Берлин).

Натрия диатриазоат



Меглюмин диатриазоат

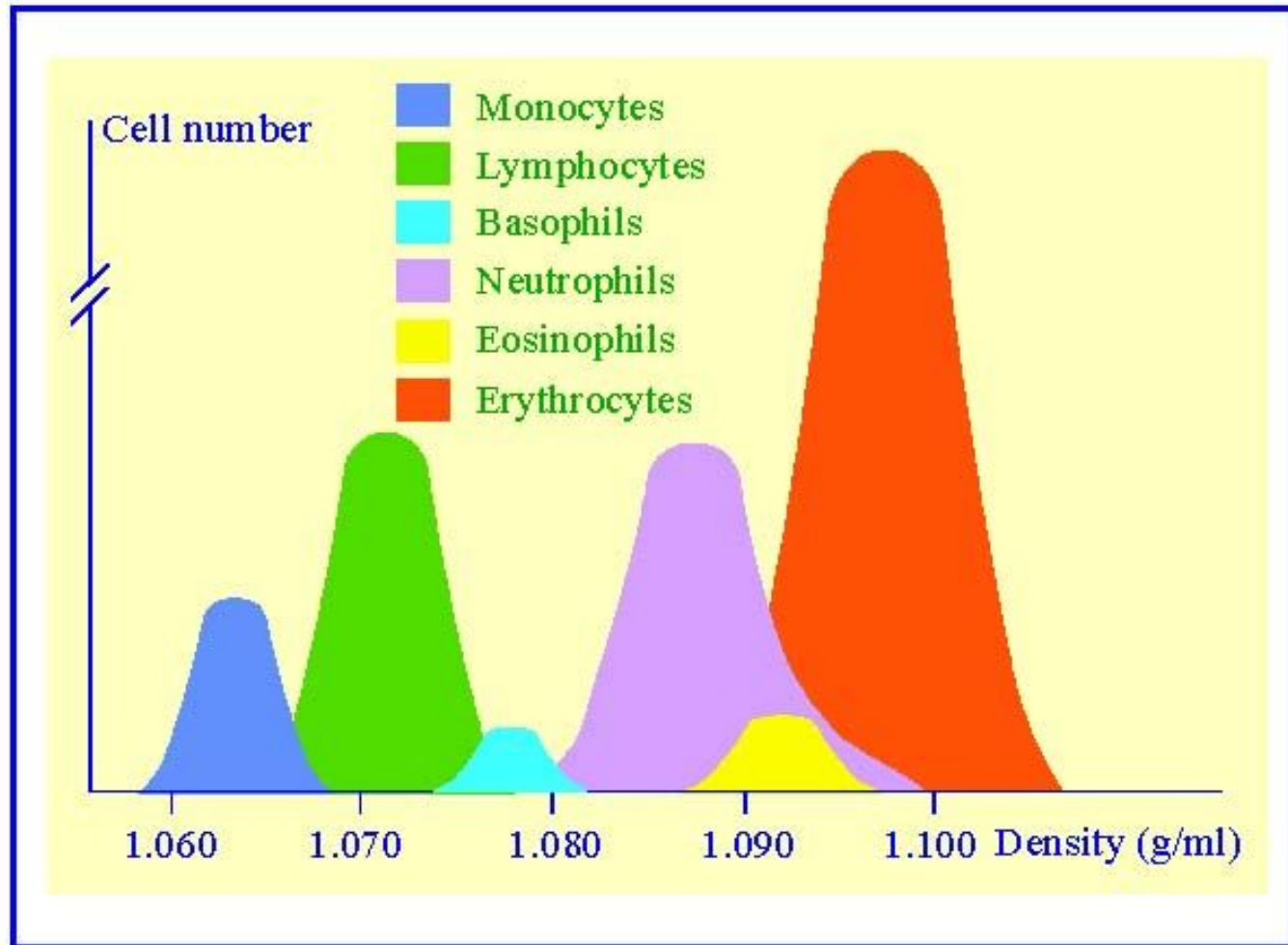


FIGURE 1. Density of human blood cells.

Lympholyte[®] Cell Separation Media

CEDARLANE[®] has specifically designed cell separation centrifugation media for the isolation of viable lymphocytes from mouse, rat, rabbit, human and other mammalian cell populations. All products are supplied as sterile liquid with varying densities.

Applications for **Lympholyte[®]** include:

- isolation of viable lymphocytes from lymphoid organs (particularly spleen) by removal of red cells and dead cells.
- removal of dead cells from lymphocyte suspensions; for example, after treatment with antibody plus complement, or following cell culture.
- **Lympholyte[®]-H** and **Lympholyte[®]-Mammal** are preferred for the isolation of viable lymphocytes from peripheral blood.

Product	Density (@ 25°C, g/ml)	Cat.#	Size	Main Application
Lympholyte[®]-M	1.0875 ± 0.001	CL5030	5x30ml	Isolation of viable MOUSE lymphocytes from lymphoid tissue.
		CL5031	100ml	
		CL5035	500ml	Not recommended for mouse blood, see Lympholyte[®]-Mammal
Lympholyte[®]-Rat	1.0940 ± 0.001	CL5040	5x30ml	Isolation of viable RAT lymphocytes from lymphoid tissue
		CL5041	100ml	
		CL5045	500ml	
Lympholyte[®]-H CE	1.0770 ± 0.001	CL5010	5x30ml	Isolation of viable HUMAN lymphocytes from peripheral blood
		CL5015	100ml	
		CL5016	6x100ml	
		CL5020	500ml	
		CL5026	6x500ml	
Lympholyte[®]-Rabbit	1.0965 ± 0.001	CL5050	5x30ml	Isolation of viable RABBIT lymphocytes from lymphoid tissue
Lympholyte[®]-Mammal	1.0860 ± 0.001	CL5110	5x30ml	Isolation of viable lymphocytes from peripheral blood of most mammalian species
		CL5115	100ml	
		CL5120	500ml	
Lympholyte[®]-poly	1.113 ± 0.001	CL5070	100ml	Isolation of viable HUMAN polymorphonuclear cells
		CL5071	250ml	
Lympholyte[®]-1.1	1.100 ± 0.001	CL5095	500ml	A high density Lympholyte [®] solution which can be diluted with PBS (without Ca ²⁺ /Mg ²⁺). Isolation of pancreatic islet cells prior to expanding them <i>in vitro</i>
Metrizamide AG (Analytical Grade)	(powder)	CL5080	50g	Fractionation of nucleic acids, proteins, and polysaccharides; Separation of lysosomes from mitochondria and peroxisomes
Polysucrose 400	(powder)	CL5401	100g	To prepare density gradient media for separation of different spleen, bone marrow and other tissues
	(powder)	CL5405	500g	
Polysucrose 70	(powder)	CL5701	100g	For cell isolation and animal perfusion
	(powder)	CL5705	500g	

The CE Mark indicates that CEDARLANE[®] Laboratories has met the registration requirements for the *In Vitro Diagnostic Directive* 98/79/EC.

Please contact...

CEDARLANE[®]
LABORATORIES LIMITED

www.cedarlanelabs.com

0601 Int

