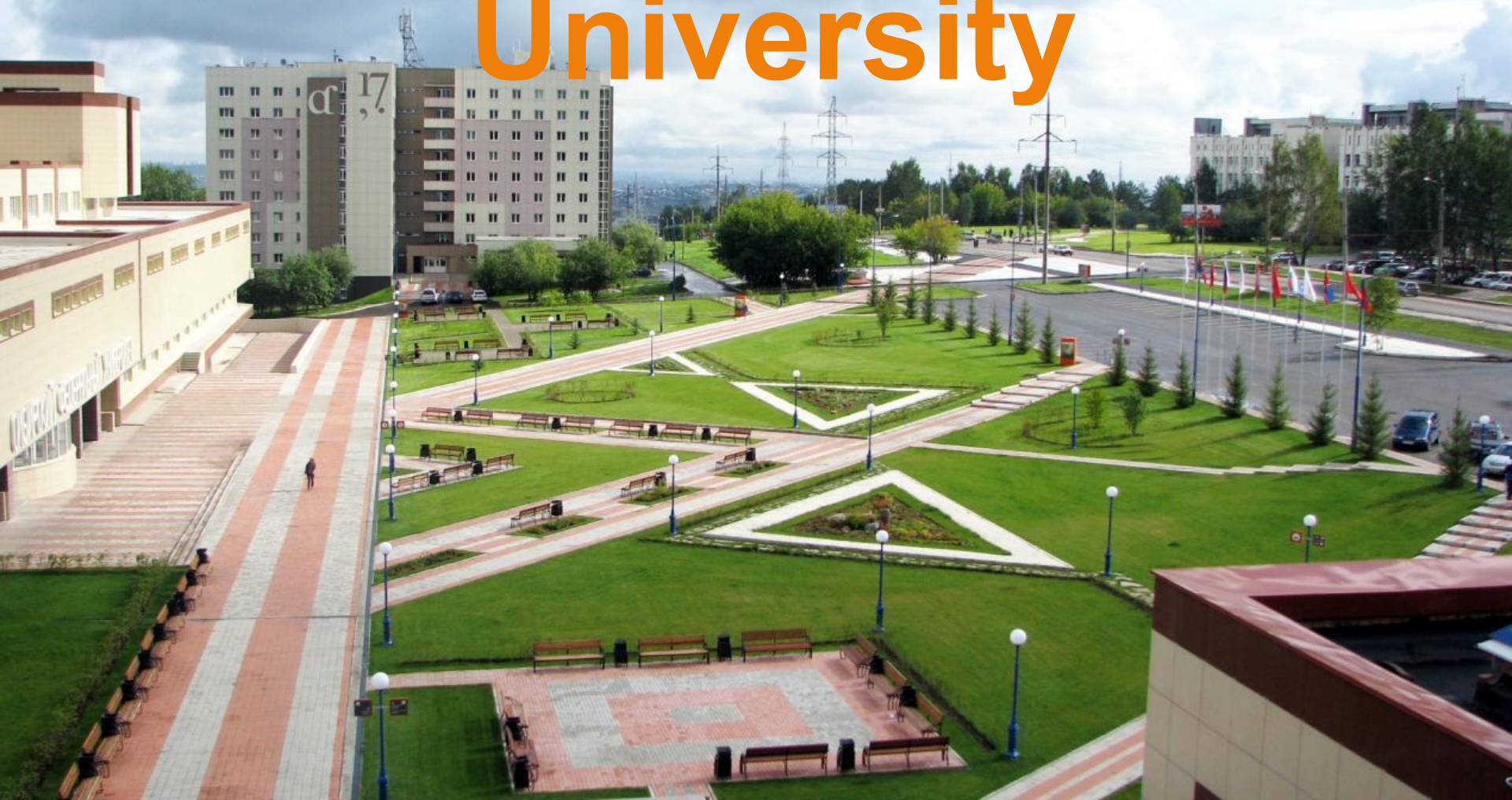




СИБИРСКИЙ ФЕДЕРАЛЬНЫЙ УНИВЕРСИТЕТ
SIBERIAN FEDERAL UNIVERSITY

Siberian Federal University





СИБИРСКИЙ ФЕДЕРАЛЬНЫЙ УНИВЕРСИТЕТ
SIBIRIAN FEDERAL UNIVERSITY

Krasnoyarsk Region (Krai) and Krasnoyarsk





Krasnoyarsk Region (Krai) and Krasnoyarsk



The Krasnoyarsk region:

- territory of 2,339,7² km = 13.8% of the country territory
- population ~ 2,847,000, 12 ethnical groups with prevailing Russian population (~ 91%) (2012 census)
- natural resources: deposits of nickel, platinum, coal, oil, gas, lead, iron-ore, graphite, so on
- Industries: metallurgical (non-ferrous metals), coal mining, hydro-power production (5 stations), timber industry & so on.

Krasnoyarsk:

- the largest city in the Eastern Siberia
- population 1,025, 250 (Sept 2013)
- 11 state & 2 non-for-profit higher educational institutions, ~150,000 students



Siberian Federal University (SibFU) was founded by merging:

- Krasnoyarsk State Technical University
- Krasnoyarsk State University
- State University of Non-Ferrous Metals and Gold
- Krasnoyarsk State Academy of Architecture and Urban Planning

on November, 4 in 2006

- Krasnoyarsk Institute of Economics and Commerce

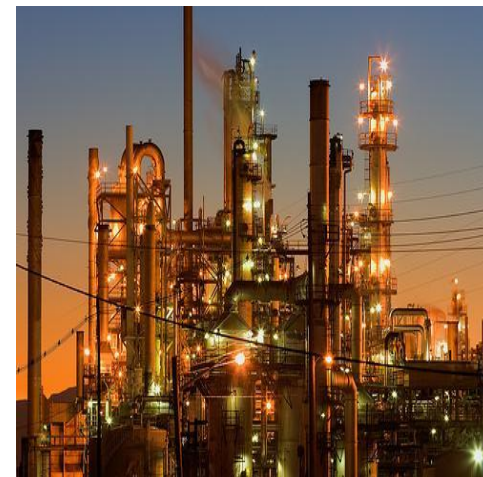
in May 2012





University mission

To serve the needs of the Region by providing high-quality practice-oriented higher education by means of close integration between education, business and research/innovation, enabling the graduates to successfully market themselves both locally and globally.



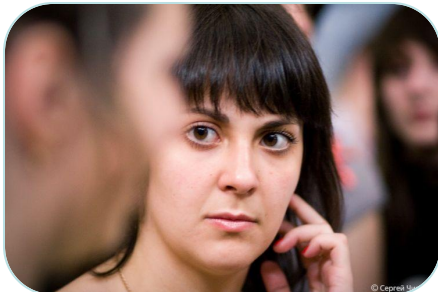


List of Schools

1. **School of Architecture and Design**
2. **School of Business Management and Economics**
3. **School of Economics and Commerce**
4. **School of Economics, Management and Environmental Studies**
5. **School of Education, Psychology and Sociology**
6. **School of Engineering and Construction**
7. **School of Engineering Physics and Radio Electronics**
8. **School of Fundamental Biology and Biotechnology**
9. **School for the Humanities**
10. **Law School**
11. **School of Mathematics and Computer Science**
12. **School of Military Training**
13. **School of Mining, Geology and Geotechnology**
14. **School of Non-Ferrous Metals and Materials Science**
15. **School of Space and Information Technology**
16. **Polytechnic School**
17. **School of Petroleum and Natural Gas Engineering**
18. **School of Philology and Language Communication**
19. **School of Physical Education, Sport and Tourism**



Facts about SibFU:



- suburban flagship campus in Krasnoyarsk
- **5** campuses located in the Krasnoyarsk Region
- **36, 000+** students (about **400** international students)
- Undergraduates/postgraduates/postdoctoral programs
- More than **3, 300** lecturers of whom **1, 684** Doctors of Philosophy and **400** Professors



Siberian Federal University (SibFU): more facts & figures

- Offers **217** degree programs in a wide range of fields of study - from technology to the humanities; PhD (Candidate of Science) and post-doctoral research in **13** subject areas
- Boasts the library with more than **1,000,000** hard-copies, subscription to **27** world databases, **50 mln** digital sources incl **27,000** journals in foreign languages; catalogues are publicly available



- Is proud that **65** % of graduates find a job in the first year after the graduation



We have partners in

1. Austria
2. Australia
3. Bulgaria
4. Check Republic
5. Croatia
6. Finland
7. France
8. Germany
9. Israel
10. Italy
11. Japan
12. Kyrgyz Republic
13. Lithuania
14. Mongolia

15. New Zealand
16. Norway
17. People's Republic of China
15. Republic of Uzbekistan
16. Republic of Armenia
17. Republic of Belarus
18. Republic of Tajikistan
22. Singapore
23. Slovakia
24. South Korea
25. Spain
26. Sweden
27. Switzerland

28. Thailand
29. Taiwan
30. The Republic of Kazakhstan
31. Turkey
32. UK
33. Ukraine
34. USA
35. Vietnam

Colour codes:

- Most intensive collaboration links
- largest international student population



Priority fields of research

- Engineering physics
- Chemistry of new materials and materials science
- Biotechnology
- Ecology (dendrochronology)
- Sustainable urban development in harsh climate
- Information and communication technologies (esp. in the space industry)
- Geotechnology
- Regional economy and human resources management



Mega-grants at SibFU

RF Government ordinance #220 of April 2010
“Developing research projects in Russian higher education institutions under the leadership of eminent world researchers”

Completed mega-grants

2010 – 2012

- **Biogeochemistry Eurasia ecosystems**, Prof. Dr. **Ernst-Detlef Schulze**, Professor Emeritus (former head) of the Max-Planck-Institute for Biogeochemistry



Mega-grants at SibFU (2)

Developing mega-grants

2011-2013 (extended)

- **Bioluminescent Biotechnologies**, **Osamu Shimomura**, the Nobel Prize in Chemistry 2008, Marine Biological Laboratory (MBL), Woods Hole, MA, USA, Boston University Medical School, Massachusetts, MA, USA
- **Biotechnology of New Materials**, Prof. **Anthony J. Sinskey**, Massachusetts Institute of Technology, MA, USA

2013-2014

- **Multidimensional complex analysis and differential equations**, **Ari Laptev**, professor at Imperial College London (UK) and KTH (Stockholm, Sweden), director of Institut Mittag-Leffler (Sweden)
- **Genomics of the key boreal forest conifer species and their major phytopathogens in the Russian Federation**, Prof. Dr. **Konstantin V. Krutovsky**, University of Göttingen, Germany



SibFU outstanding researchers

Name	SibFU school	Research interests	h-index
Eugene Vaganov (Rector)	School of Economics, Management and Environmental Studies	Earth and Planetary Sciences, Agricultural and Biological Sciences, Environmental Science	h=22
Sergei Ovchinnikov	School of Engineering Physics and Radio Electronics	Physic and Astronomy, Material Science	h=16
Michail Gladyshèv	School of Fundamental Biology and Biotechnology	Agriculture and biological Sciences, Biochemistry, Genetics and molecular biology, Environmental Sciences	h=16
Eugene Vysotski	School of Fundamental Biology and Biotechnology	Biochemistry, Genetics and Molecular Biology , Chemistry	h=15
Elena Rozhkova	School of Non-Ferrous Metals and Materials Science	Materials Science	h=14



Current major project “Taiga Journal” (TJ) project

- Published in the English language
- Peer-reviewed
- In collaboration with IBFRA (International Boreal Forest Research Association)
- Supported by ELSEVIER publisher (Amsterdam Headquarters)
- Topics: taiga, boreal forests and various aspects related to them: development, preservation, ecology, indigenous population, etc.
- International editorial board includes representatives of 7 countries
- Expectations: **1.0 impact factor by 2016**



СИБИРСКИЙ ФЕДЕРАЛЬНЫЙ УНИВЕРСИТЕТ
SIBERIAN FEDERAL UNIVERSITY

Non-degree semester programme in English in 2014

- **MSc ‘General Ecology’**

Non-degree semester programmes in English expected in 2015

- **MSc ‘Contemporary Multidimensional Complex Analysis’**
- **MSc ‘Biological Engineering’**





Courses of Russian as a foreign language at SibFU

- 1) **Centre for International Education**
(<http://www.sfu-kras.ru/en/cie>):
 - Pre-admission non-degree courses of Russian as foreign language: General Russian and Professional Russian
 - TORFL (Test of Russian as a Foreign Language) Exam Centre: preparation to test.
- 2) **Department of Russian as a Foreign Language at the School of Philology and Language Communication**
(<http://ifiyak.sfu-kras.ru/struktura/item/46>)
 - BA/MA in “Linguistics”
 - Short- and long-term research visits
 - Summer school “Learn Russian in Siberia – challenge stereotypes»



International centres at SibFU

- 1) Spanish Language Center (supported by Banco Santander)
- 2) Japanese Cultural Center
- 3) Russian – German Center (DAAD)
- 4) Goethe Institute German Language Center
- 5) Centre for Chinese Language and Culture





СИБИРСКИЙ ФЕДЕРАЛЬНЫЙ УНИВЕРСИТЕТ
SIBERIAN FEDERAL UNIVERSITY

Student Life

SibFU supports about a **105** students' societies and clubs to provide **vibrant** and **varied** extra-curricular life





Student sport life



University offers **82** sport clubs and societies in **33** kinds of sport



СИБИРСКИЙ ФЕДЕРАЛЬНЫЙ УНИВЕРСИТЕТ
SIBERIAN FEDERAL UNIVERSITY

Krasnoyarsk 2019 – a host of Winter Universiade (*attributed to Krasnoyarsk by the *FISU Executive Committee on November 9 2013*)

- **SibFU's campus and facilities are to be used intensively for the Universiade purposes.**

WU Mascot



***FISU** – International University Sports Federation



Modern on-campus accommodation



Commuter university,

- ◆ we also provide **27** on-campus residential houses accommodating more than **9.000** students.

All international students are offered on-campus accommodation.





CONTACT INFORMATION

- Post: 82A Svobodny Prospect
Room 448
Krasnoyarsk 660041 Russia
- phone: +7(391) 2-206-2781
- Email: ovkuznetsova@sfu-kras.ru / ovkuznetsova@sfu-kras.ru / dia@sfu-kras.ru

Russian as a foreign language

Write to:

- Dr Elena Elina, Centre for International Education, elena-elina@hotmail.ru
- Dr Tatiana Verenich, Department of Russian as a Foreign Language, rusinyaz@mail.ru

Thank you for attention

<http://www.sfu-kras.ru/>

