

The White House

Disco

Rock music from the U.S.A.



Over 18s only

Doors open: 9 pm
Tuesday – Saturday

Tickets: £6 (Students £5)

No jeans or T-shirts

DISCO

- ◆ every evening?
- ◆ what music?
- ◆ clothes / wear?
- ◆ student ticket? £?
- ◆ begin?



PAINTING COMPETITION

For young people 8–16 years old

Paint a picture of an animal



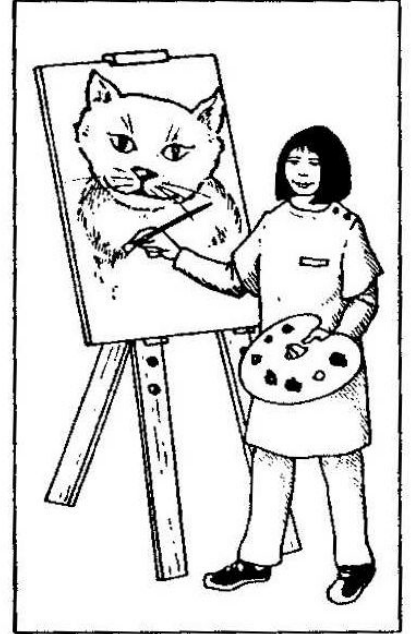
Send it to:
Young Artist Magazine
12 High Street

before 14 September

and win a bicycle!

PAINTING COMPETITION

- ◆ win something?
- ◆ what / paint?
- ◆ for everybody?
- ◆ competition address?
- ◆ last day?



ART SHOW

Pictures by David Piper

Meet the artist and buy a painting for your home



6-8pm every evening

Adults: £4

Students: £2

28 Market Street

ART SHOW

- ◆ where?
- ◆ when?
- ◆ whose pictures?
- ◆ ticket? £
- ◆ buy / picture?



CITY UNIVERSITY FILM CLUB

EVERY MONDAY 6-9.30 p.m.

Films from America, Australia and Britain

Get your tickets from the Student Office

Adults	£3
Students	£1.50

Café open for drinks and snacks



FILM CLUB

- ◆ every week?
- ◆ price? £
- ◆ where / ticket?
- ◆ French films?
- ◆ café?

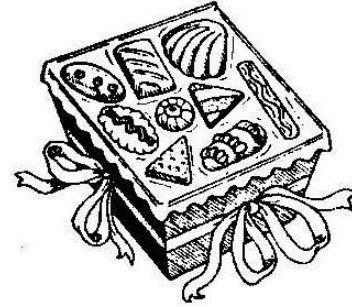


SWEET SHOP

- ◆ name?
- ◆ expensive?
- ◆ when / open?
- ◆ chocolate eggs?
- ◆ near town centre?



Parker's Sweet Shop



14 Barrett Road

5 minutes from town centre

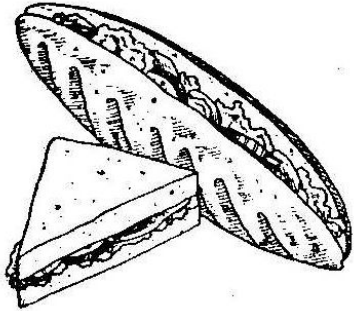
TRY OUR FAMOUS CHOCOLATE EGGS AND SUGAR HEARTS

Prices lower than in other shops

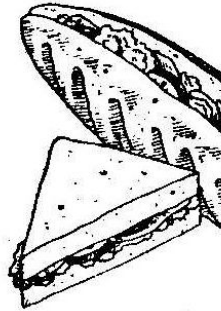
OPEN MONDAY-SATURDAY 9AM-5PM

GLORIA'S SANDWICH SHOP

We make 100 different sandwiches!



Hot soup
Orange juice
Coffee



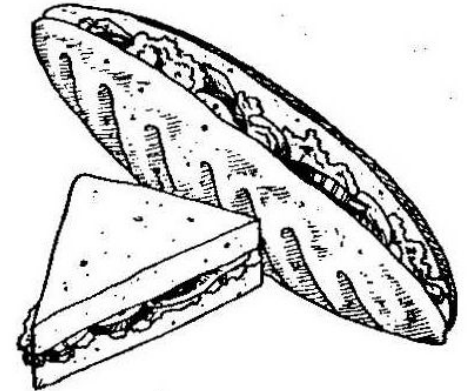
£2.80 each sandwich

Car park behind shop

Closed on Mondays

SANDWICH SHOP

- ◆ what sandwiches?
- ◆ price?
- ◆ open every day?
- ◆ drinks?
- ◆ car park?



A WALK FOR TOURISTS

- ◆ where / start?
- ◆ what / visit?
- ◆ every day?
- ◆ expensive?
- ◆ lunch?



WALK THROUGH OUR BEAUTIFUL TOWN FRIENDLY TOUR GUIDES

See the museum, market and castle

Every Tuesday

Starts: Grand Hotel at 10 am

Finishes with lunch in Park Restaurant

£13 per person

CLUB FOR YOUNG PEOPLE

- ◆ name?
- ◆ when?
- ◆ what / do?
- ◆ where?
- ◆ cost? £?



HAPPY DAYS CLUB

for young people from
12–18 years

Every Friday
7.30–10.30 pm

29 Milton Street

Just £2 per week

Games – music – dancing and lots more

Bird park

- what / see?
- open / February?
- what / learn?
- child's ticket? £?
- phone number?



Lightwood Bird Park



Look at beautiful birds from Europe, Africa and Asia

Learn how birds fly

February to December

10 a.m. – 5 p.m.

£2 children

£4 adults

Call 859261

Football lessons

- where?
- day?
- for adults?
- cost? £?
- time?

FOOTBALL LESSONS

Tuesdays and Fridays

For players 12 – 16 years old

6 – 8 p.m.
£3 per lesson

**Must wear
football boots.**



NORTH ROAD SPORTS CENTRE

Sailing School at Bluewater Lake

Learn to sail
It's easy and fun!

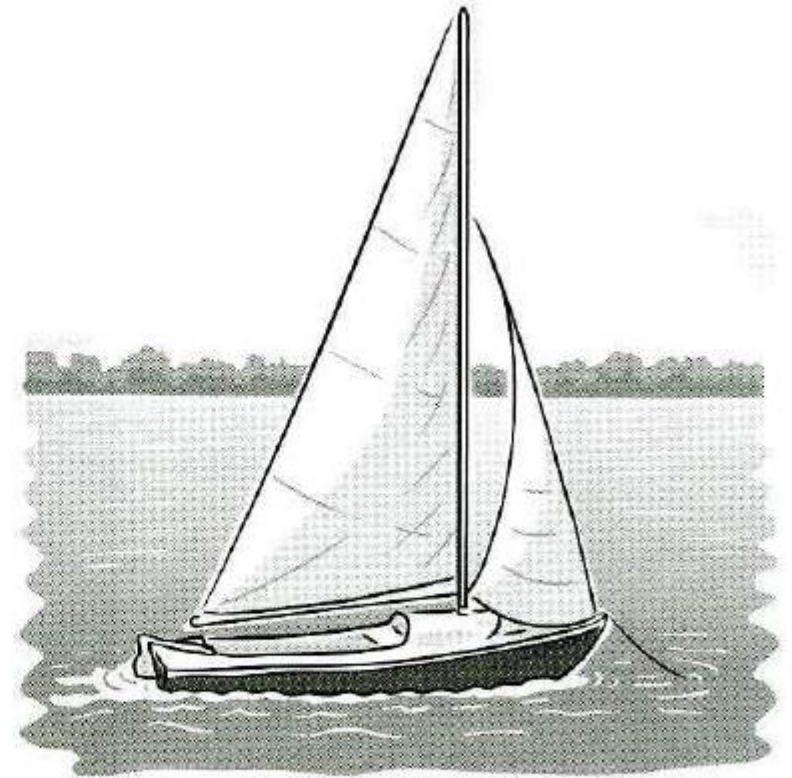
**Classes for adults
and children
2 – 4 p.m. every
Saturday**

£20 per lesson



Sailing school

- where?
- cost? £?
- when?
- difficult?
- children's lessons?



Maths lessons

- when?
- name / teacher?
- telephone number?
- cost?
- where?

$$45 \times 17 =$$

$$873 \div 29 =$$

Maths teacher

Richard Wilson
will give lessons at your home

on weekdays after 6 p.m.

£18 for one hour

Telephone 576980

$$45 \times 17 =$$

$$873 \div 29 =$$

$$976 - 533 =$$

Katie the Elephant!

You can ride an elephant
next Saturday
in **City Park**
£2

Safe for young children

Tel: 371294 to book



Elephant ride

- name / elephant?
- when / ride?
- price? £?
- in zoo?
- dangerous?



School trip

- date?
- what / visit?
- expensive?
- when / pay?
- time / return?

School trip to

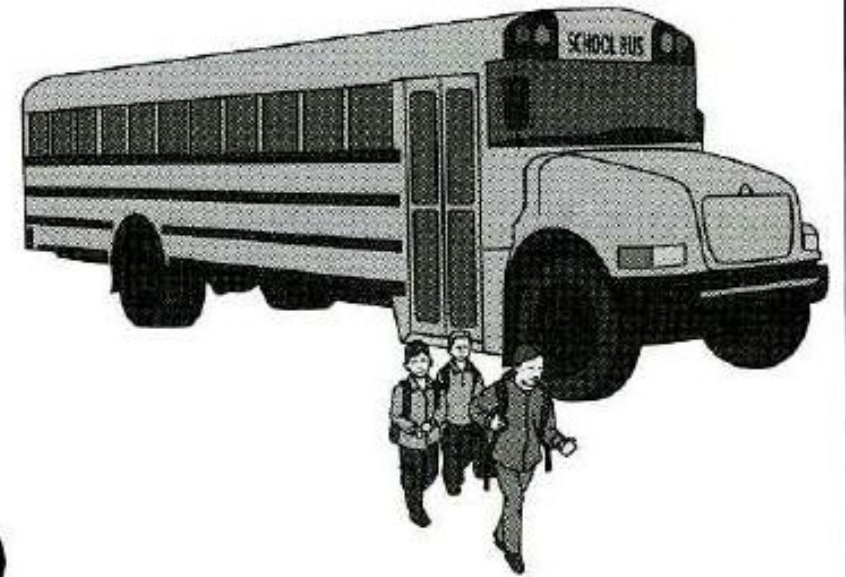
Science Museum

Wednesday 12th October

leave school 7.30 a.m.
return school 5.30 p.m.

£15 (with lunch in a restaurant)

Pay School Secretary by 30th September



Sunday 11th October at 9.00 a.m.

RUNNING RACE

10 kilometres

Starts: King's Bridge
Finishes: West Park

First Prize £100

Phone Andy Smith: 683217



Running race

- where / start?
- long race?
- what / prize?
- date?
- more information? ☎?

