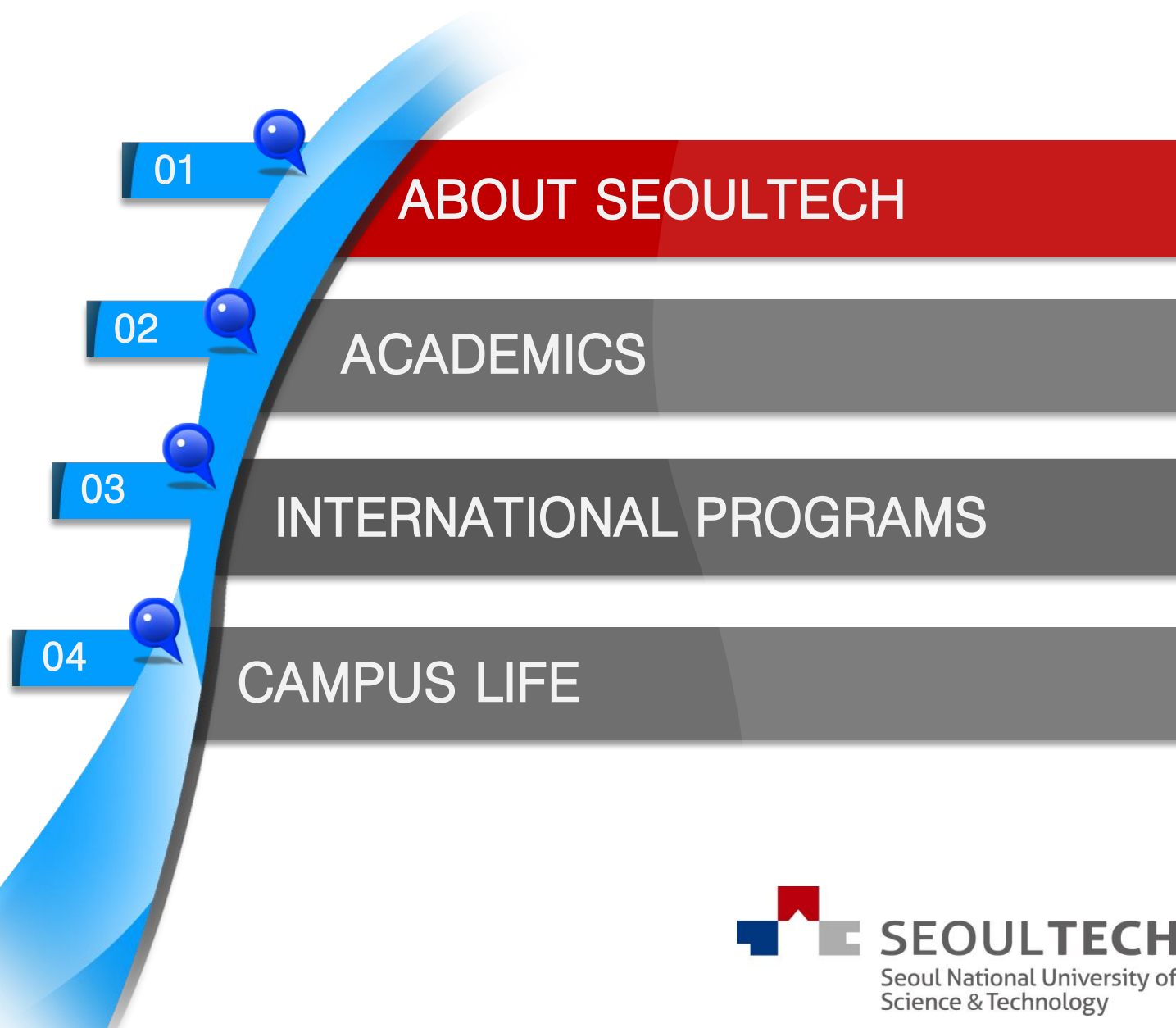


Study @ SeoulTech (Korea)

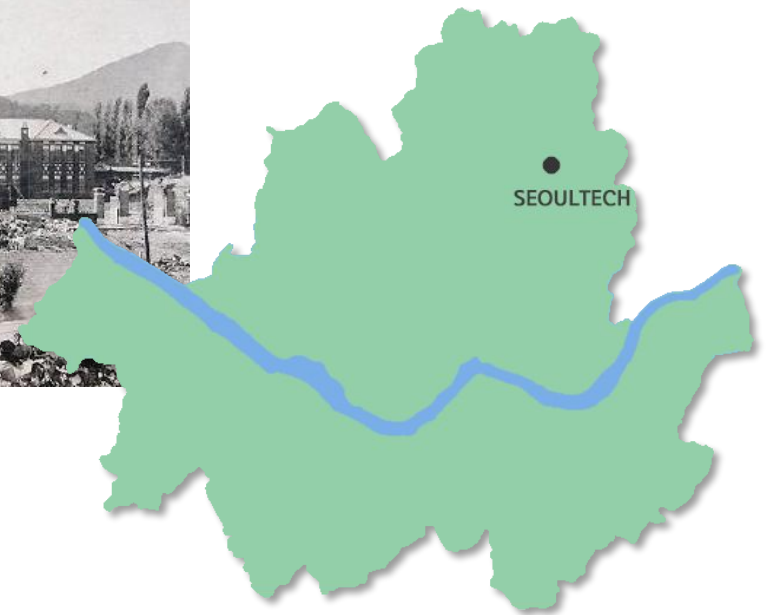
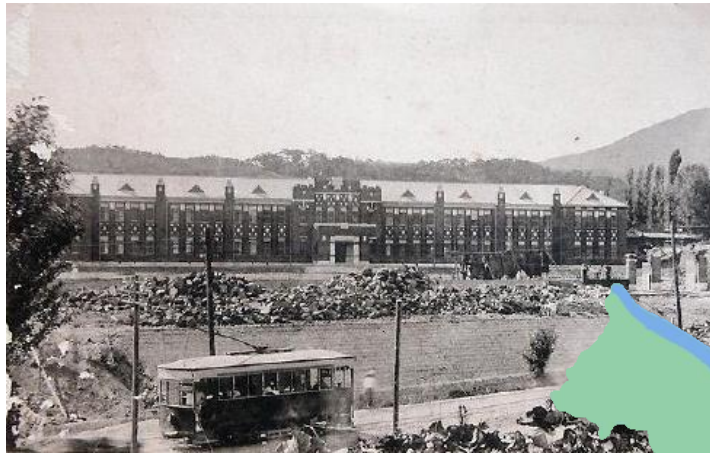


Seoul National University of Science & Technology
(Office of International Affairs)





- National University in Seoul with more than **100 years** of history
- Reasonable tuition fee with generous scholarships



1910

1953

1982

1989

1990

2000

2013

Your Future Our Vision

- Spacious and green campus
 - ✓ 510,000m²(124 acres)
- Dormitory with modern facilities and amenities
 - ✓ Priority on international students



1910

1953

1982

1989

1990

2000

2013

Your Future Our Vision

- On-campus **TECHNOPARK** with more than 70 companies



1910

1953

1982

1989

1990

2000

2013

Your Future Our Vision



Ranked 23rd among Korean Universities
 Ranked 3rd among National Universities in Korea



Ranked 1st in employment rate



Ranked 1st in research papers per faculty



Ranked 801+ (QS World University
 Rankings)



Ranked 32nd in Asian Specialized University
 Rankings & 2nd in Republic of Korea



Undergraduate Students	9,727
Graduate Students	1,497
Faculty	366
Staff	327
International Students	826
	(51 Countries)

Country

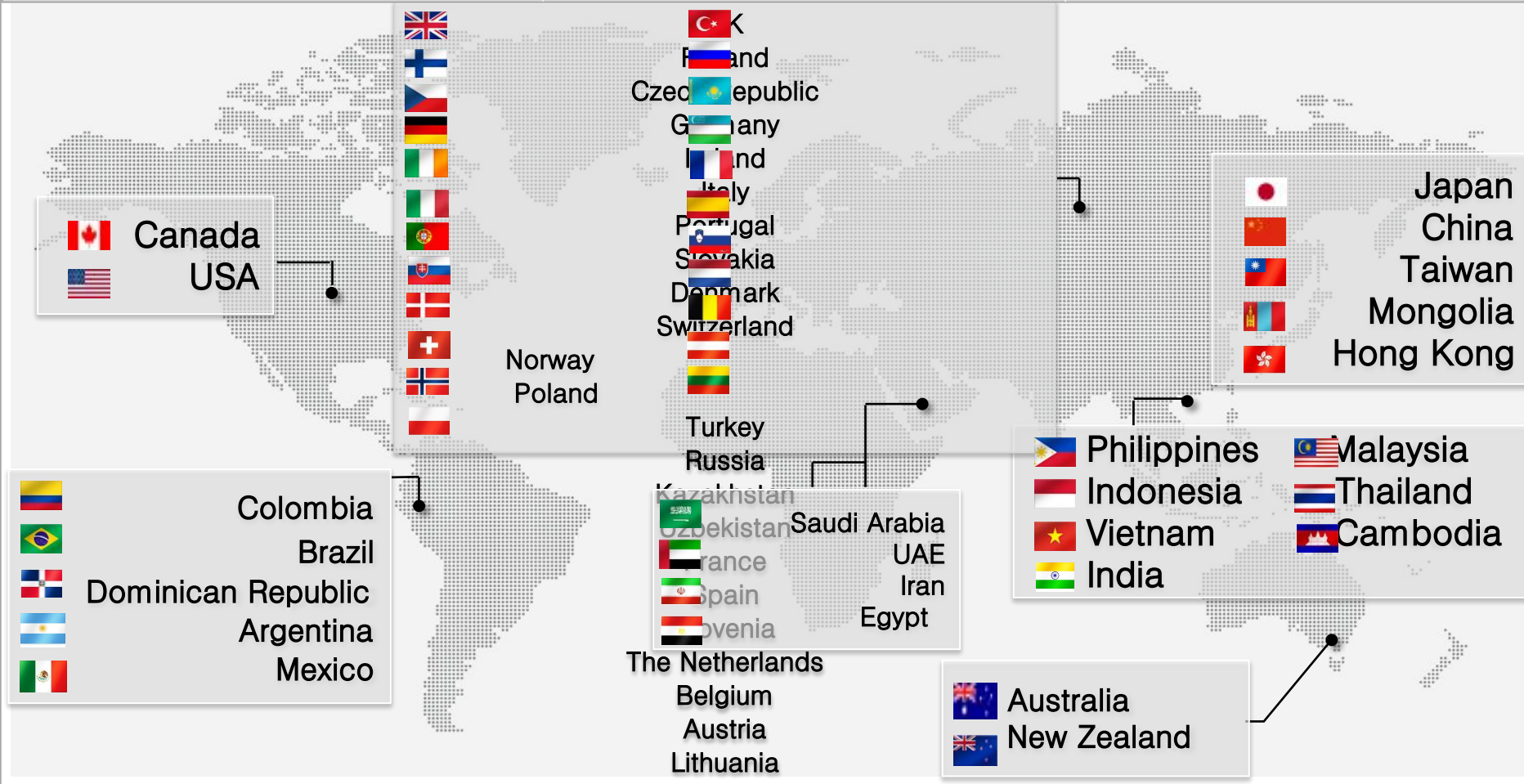
51

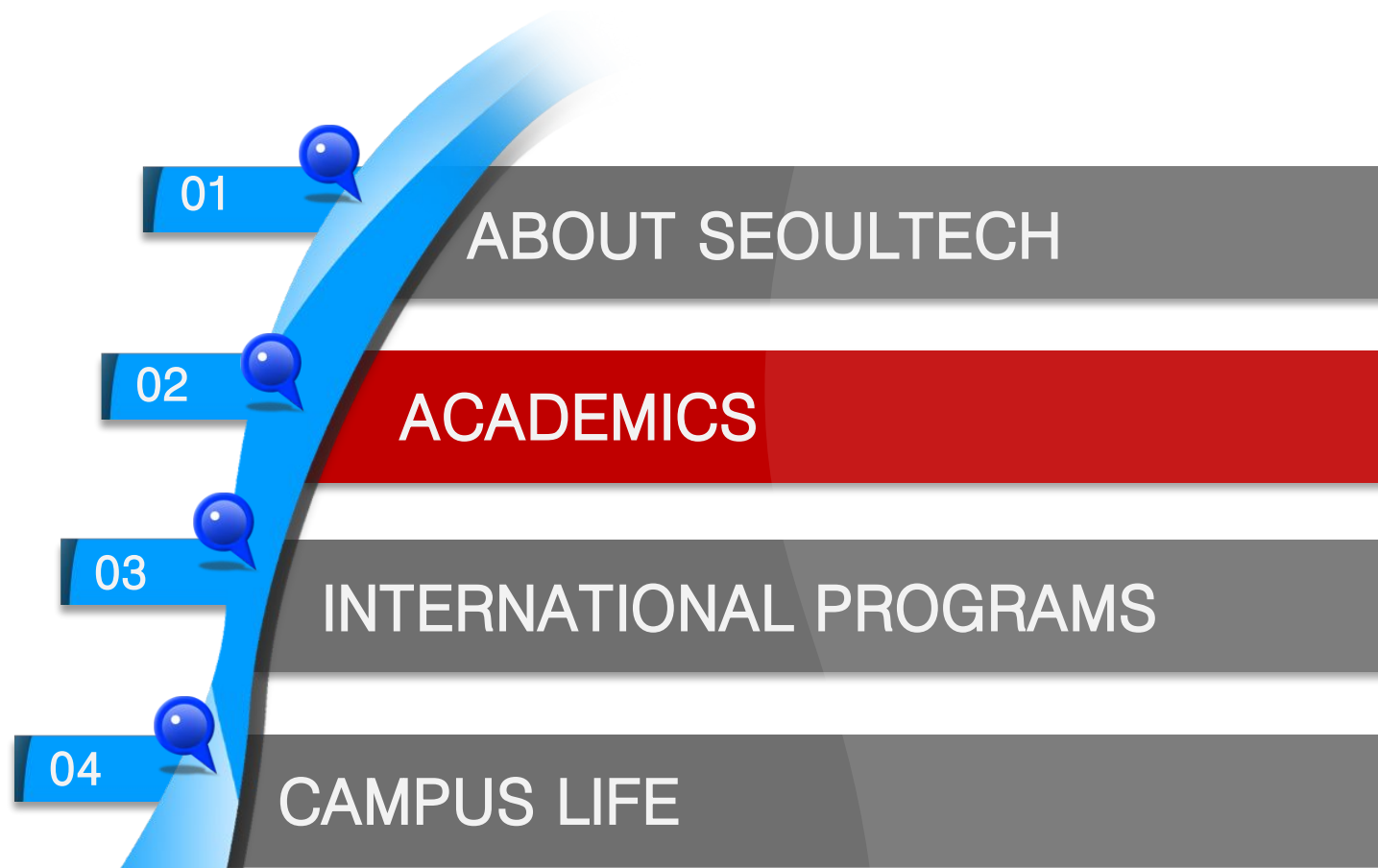
University

327

Institute

9





Colleges

6 Colleges

College of Engineering

College of Info. & Comm. Engineering

College of Energy & Biotechnology

College of Art & Design

College of Humanities & Social Sciences

College of Business & Technology

Graduate Schools

1 General,
4 Professional

General Graduate School

Professional Graduate School

Railroad

Public Policy & Information

Technology

Energy & Environment

Nano IT Design Fusion

MSDE (Manufacturing Systems & Design Engineering)

Dual degree with Northumbria University in UK

ITM (IT Management)

Dual degree with Northumbria University in UK

Computer Science & Engineering

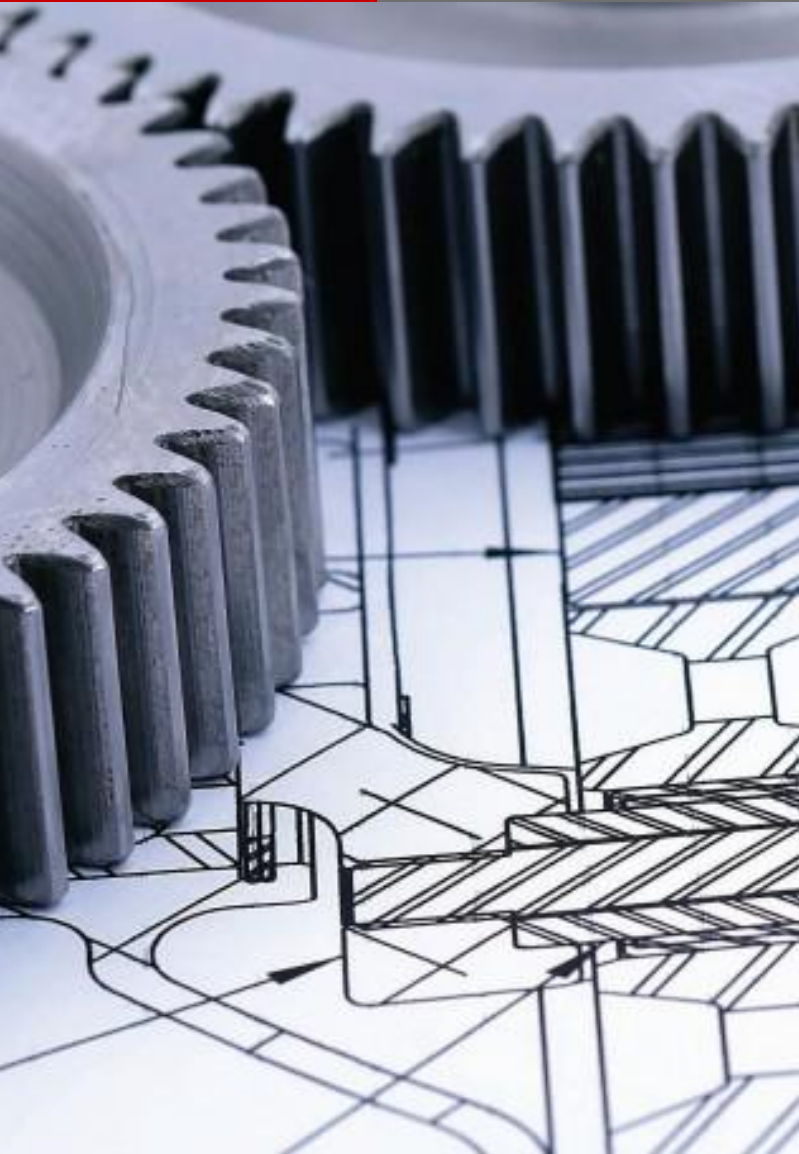
Dual degree with University of Hertfordshire in UK

Take 4-year courses at Seoul Tech and receive dual degrees

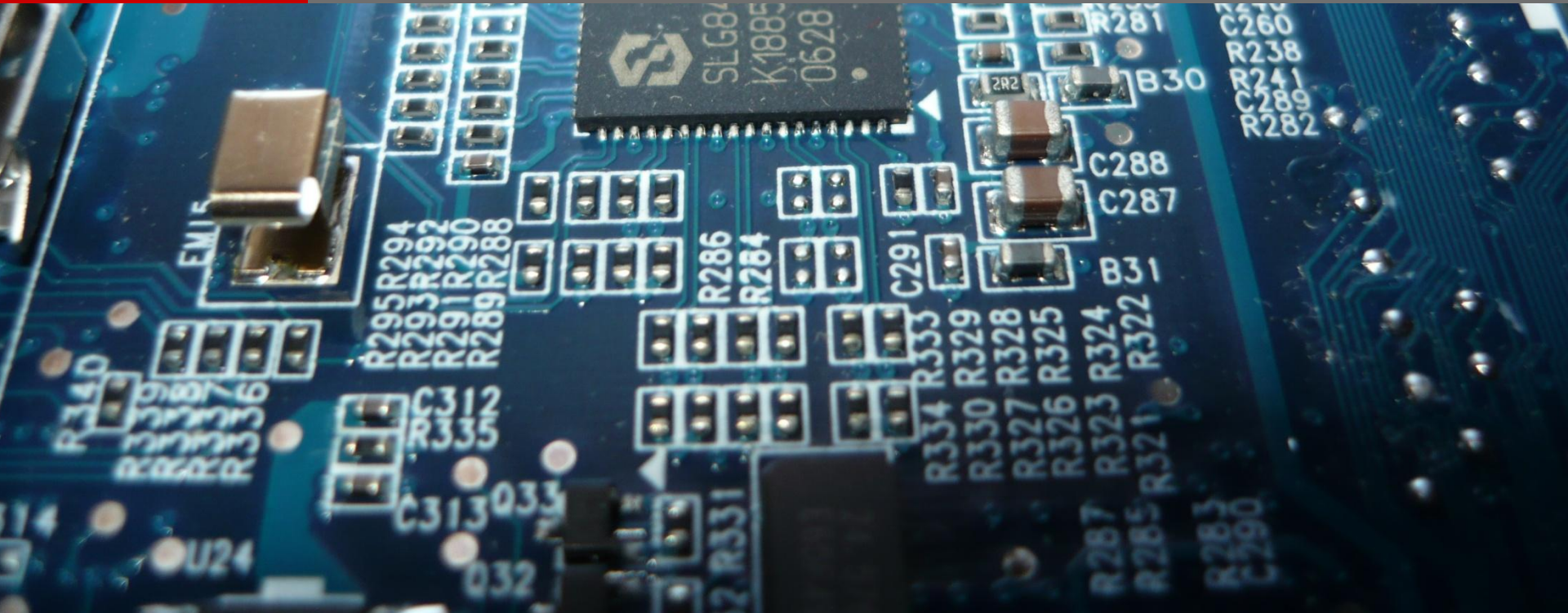
GTM (Global Technology Management)

2+2 Dual degree with Montclair State University in USA

- Studying at Montclair State University for 2 years



- Mechanical System & Design Engineering
- Mechanical & Automotive Engineering
- Safety Engineering
- Materials Science & Engineering
- Civil Engineering
- School of Architecture
 - ✓ Architectural Engineering Program
 - ✓ Architecture Design Program



- Electrical Engineering & Information Technology
- Electronic & IT Media Engineering
- Computer Science & Engineering



- Chemical & Bio-molecular Engineering
- Environmental Engineering
- Food Science & Technology
- Fine Chemistry
- Optometry
- Sports Sciences

- Design
- Ceramic Arts
- Metalwork & Jewelry
- Fine Arts





- Public Administration
- English Language and Literature
- Creative Writing



Business Administration

- ✓ Business Administration
- ✓ GTM(Global Technology Management)

Industrial & Systems Engineering

- ✓ Industrial & Information Systems Engineering
- ✓ MSDE(Manufacturing Systems & Design Engineering)
- ✓ ITM(IT Management)

Mechanical Design & Robot Engineering	Media IT Engineering
Mechanical Engineering	Chemical Engineering
Product Design & Manufacturing Engineering	Environmental Engineering
Data Science	Food Science & Technology
Material Science & Engineering	Fine Chemistry
Automotive Engineering	Industrial Design
Civil Engineering	Visual Design
Architecture	Ceramic Arts
Architectural Engineering	Metal Arts & Design
Architectural Design	Fine Arts
Electrical & Information Engineering	Business Administration
Electronic Engineering	TESOL
Computer Science & Engineering	Optometry
Creative Writing	Sports Science





Professional
Graduate Schools

Graduate School of Railroad

Rolling Stock System, Electrical & Signaling Engineering

Railroad Construction Engineering, Railroad Safety Engineering

Railroad Management & Policy

Graduate School of Public Policy & Information Technology

Public Policy, Industrial Information Systems

Broadcasting & Communication Policy, Digital & Cultural Policy

Graduate School of Energy & Environment

New Energy Engineering, Energy & Environment

Energy System Engineering, Energy Policy

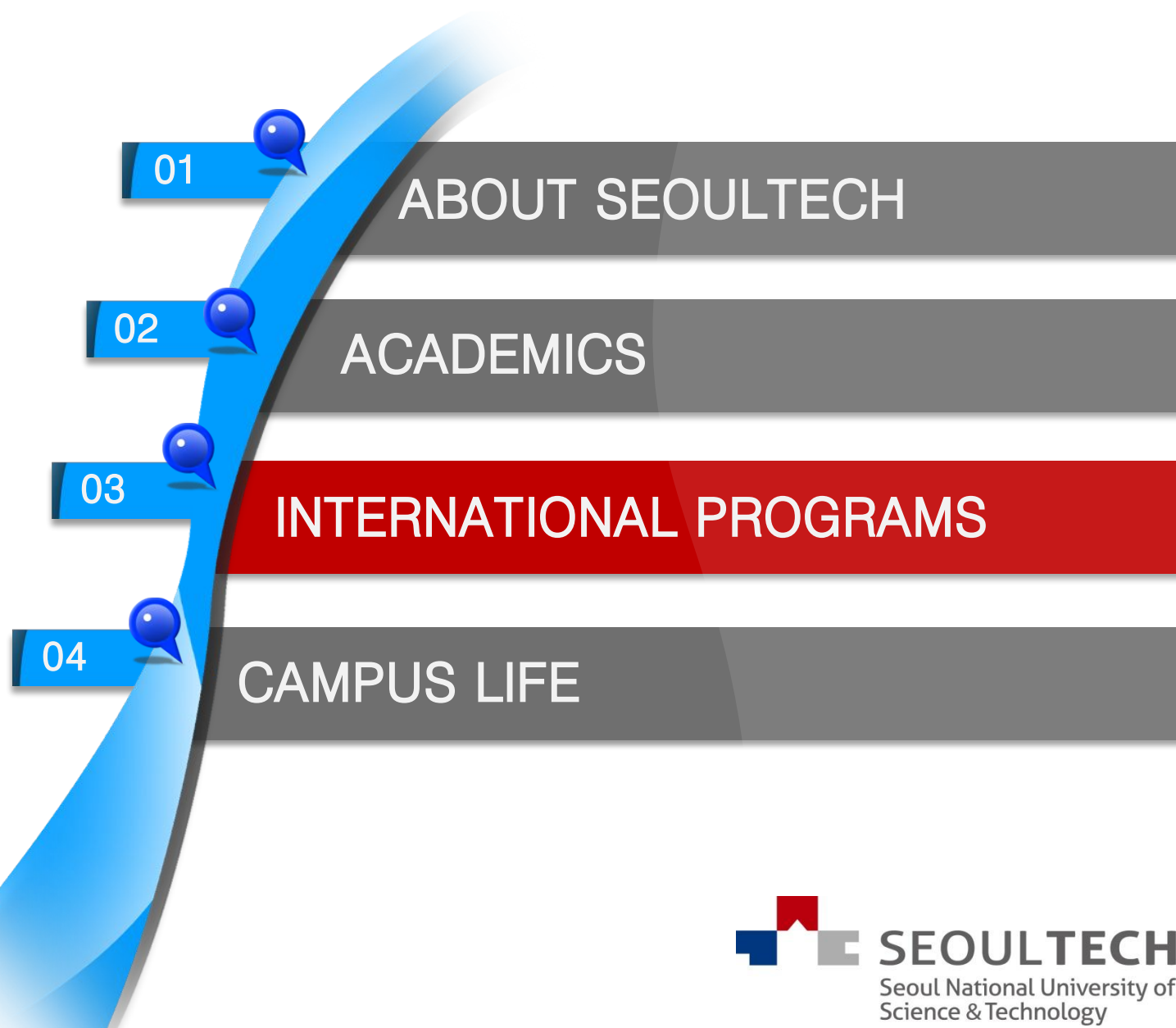
Graduate School of Nano IT Design Fusion

Nano · IT Fusion Program

IT · Design Fusion Program

Broadcasting & Communications Fusion Program

Design & Engineering Program



Degree Program

- Undergraduate
- Masters and Doctorate

Exchange Student Program(ESP)

- For students from the partner universities who wish to study at SeoulTech for 1 or 2 semesters

Visiting Program : SeoulTech International Summer Semester(STISS)

- For partner universities' students who want to study basic Korean language & culture

Korean Language & Culture Program(KLCP)

- For international students who want to study Korean language and culture intensively

Timeline

Procedure

- Application Deadline
- Registration

Spring Semester Mar ~ June

- Late Nov.
- Late Jan.

Fall Semester Sept ~ Dec

- Late May
- Late Jul.

Eligibility

- Full time student currently enrolled in one of the partner universities
- Those who are able to study courses delivered either in English or Korean

Period

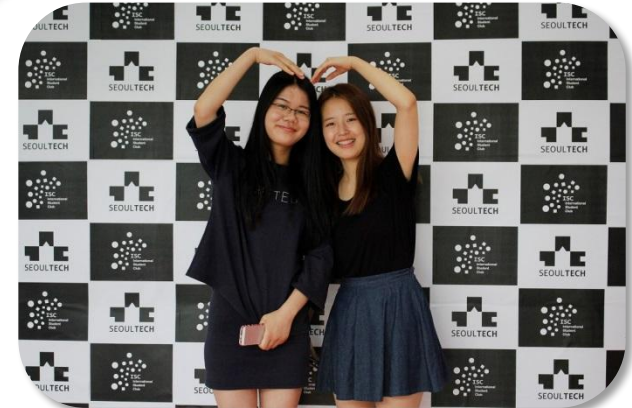
- A semester or an academic year

Deadline

- Fall semester : May 31
- Spring semester : November 30

Benefits

- Tuition waiver for students from partner universities



Description

- **Complimentary program** for the nominees who are from our partner universities
- To learn Korean language and understand Korean culture

Courses

- Basic Korean
- Special Lectures
- Field Trip

Participants

- Up to three from each university

Credits

- 2 academic credits awarded upon completion

Benefits

- All free including tuition, dormitory, meals, field trips and airport pick-up fee **EXCEPT** airfare



Objective

- To equip students with Korean language skills to be able to advance to higher education or job openings in Korea
- To understand Korean culture, adjust to life in Korea, and mingle with Korean people

Requirements

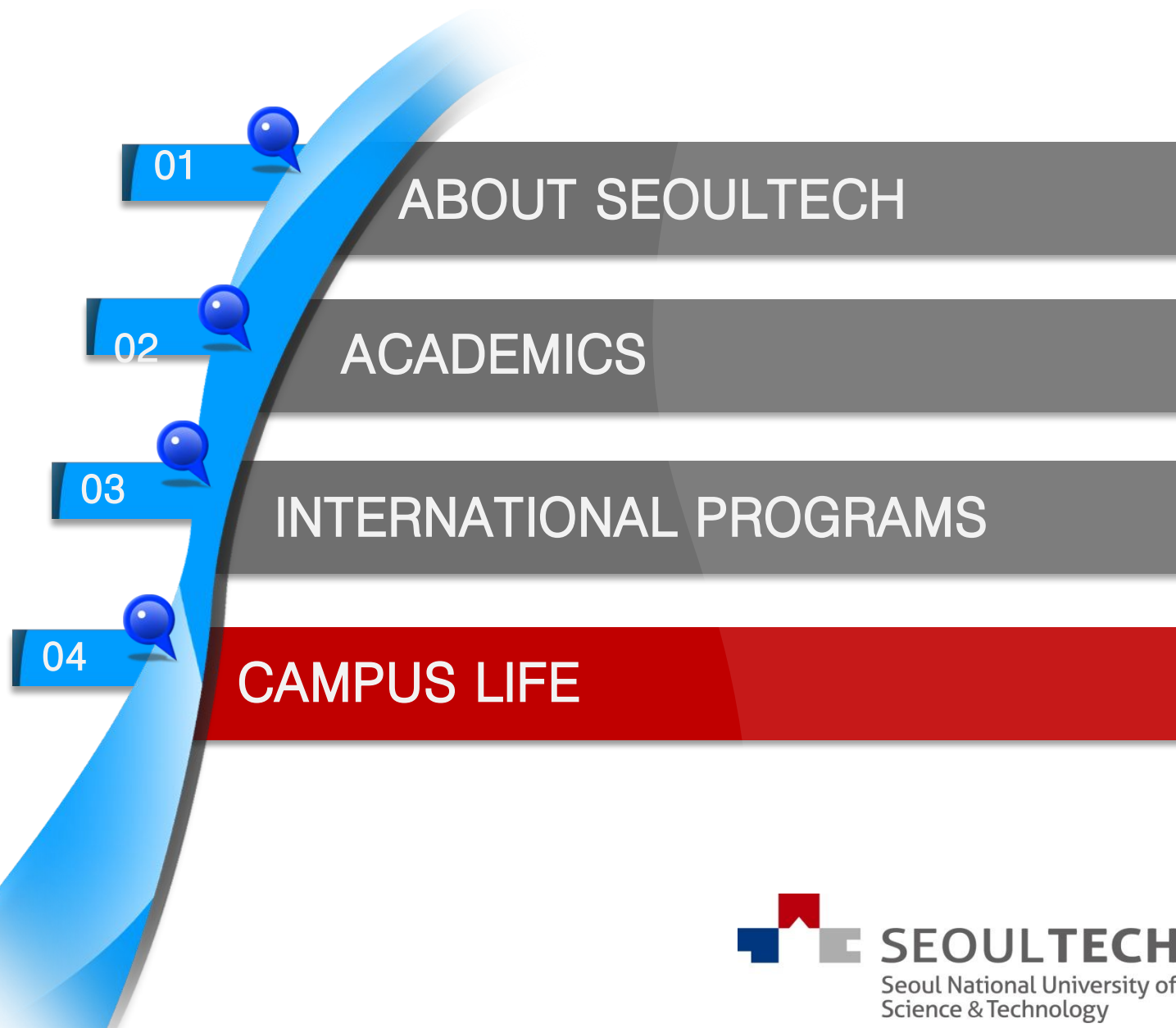
- A high school diploma or equivalent

Terms & Hours

- 4 terms
- 200 hours for 10 weeks

Tuition: US \$1,000 per semester

* 1 USD=1,200KRW, 70% discount for exchange students



Accommodation

- 3 modern-style buildings
- Rooms for 1,642
- New dormitory for 900 students under construction(2017)
- **Dormitory fee** (Unit : approx. USD per semester, 1 USD=1,200KRW)

Undergraduate	2-bed	\$628
	4-bed	\$508
Graduate (Rooms with Kitchen)	1-bed	\$1,365
	2-bed	\$922
	4-bed	\$719

※ Meal options (per semester)

- Lunch & Dinner \$600
 - Breakfast,
Lunch & Dinner \$840
- For international students, no-meal option available



Supports

- Mentoring program
 - Counseling Service
- Tutoring program
 - Teaching Subject : Language, Dance, Yoga, etc)
- Buddy program
 - 1:1 match
(Korean Student : Foreign Student)
- ISC(International Student Club)
Supporting international students adjusting to life at Seoul Tech
 - Airport Pick-up
 - Cultural Tour





Our Dream, Your Future

- National university in Seoul with more than 100 years of history
- Reasonable tuition fee and generous scholarships
- Spacious and green campus (510,000m²/124 acres)
- IEQAS(International Education Quality Assurance System) certified by Ministry of Education since 2014
- KGSP(Korea Government Scholarship Program) designated by National Institute for International Education since 2011
- Ranked 1st in research papers per faculty in Korea (2014 JoongAng Daily University Ranking)
- Specialized university : Ranked 32nd in Asia & 2nd in Korea (2015 QS Evaluation)



SEOULTECH
SEOUL NATIONAL UNIVERSITY OF
SCIENCE & TECHNOLOGY

OFFICE OF INTERNATIONAL AFFAIRS
232 Gongneung-ro, Nowon-gu, Seoul, Republic of Korea, 01811
Tel +82-2-970-9221~2 Fax +82-2-970-9229
Email oia@seoultech.ac.kr Website <http://www.seoultech.ac.kr>

Q&A

SeoulTech

Contact

232 Gongneung-ro, Nowon-gu, Seoul,
Republic of Korea, 01811

Tel: +82-2-970-9221~2

Fax: +82-970-9229

E-mail: oia@seoultech.ac.kr

Web: www.seoultech.ac.kr