

*“The Lord is my Light”*



UNIVERSITY OF  
OXFORD





# History

Teaching existed since **1096**.

- **1167** English students banned by Henry II from attending the University of Paris settled in Oxford
- **1249** the first college, University College
- **1878** Lady Margaret Hall, the first women's college



# All Souls



# Magdalen College



# Christ Church





# *Notable Colleges*

**Lady Margaret  
Hall**



**Keble  
College**



# *History*

Teaching existed since **1096**.

- **1167** English students banned by Henry II from attending the University of Paris settled in Oxford

- **1249** the first college, University College

- **1878** Lady Margaret Hall, the first women's college

- **1920** women first admitted to full membership



# ***Oxford Today***



# Organisati on



The university is a federation:

- central administration
- **39** colleges
- **6** private halls



# ***Education***



# *The Bodleian Library*





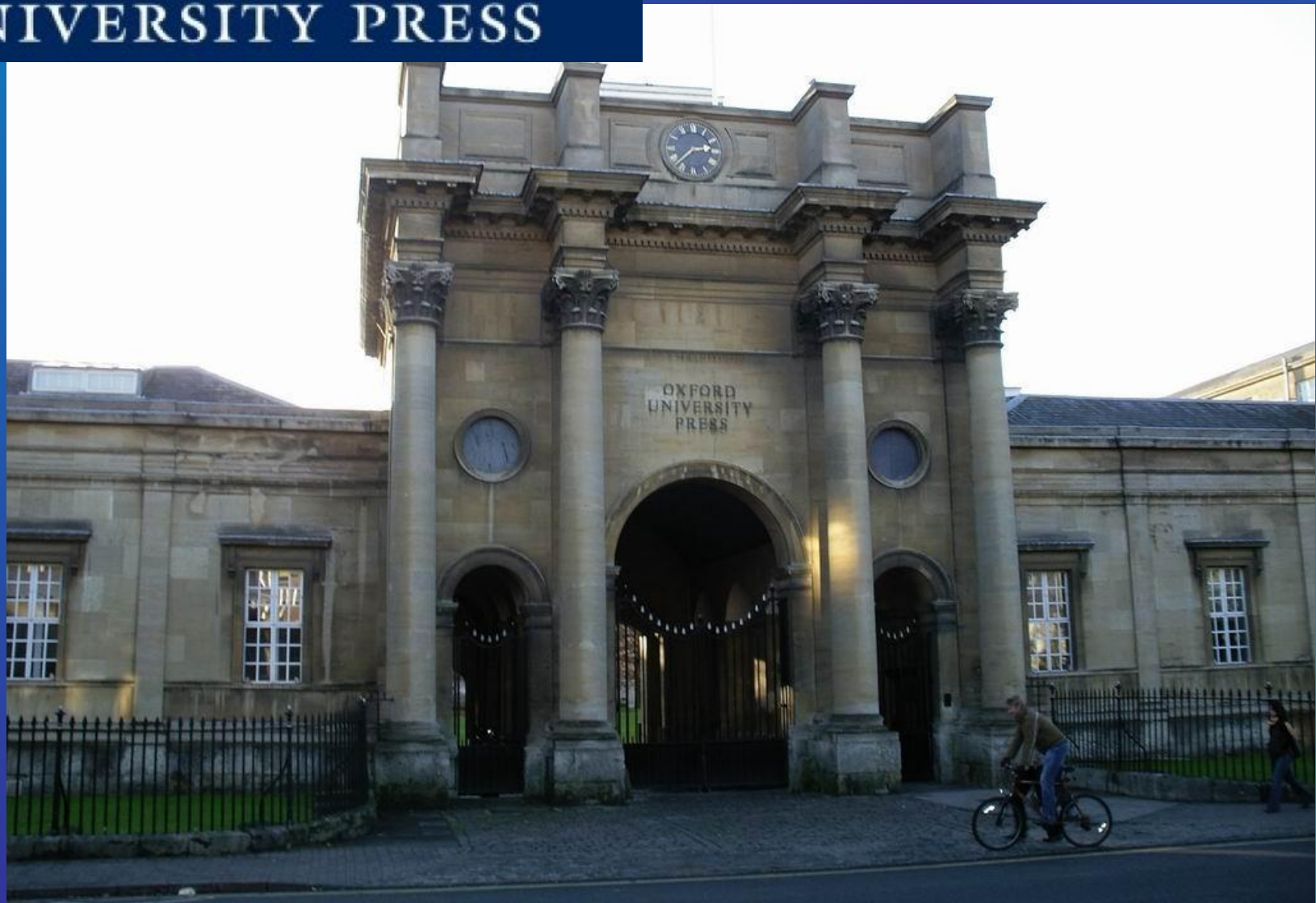
# Ashmolean Museum



# Museum of Natural History

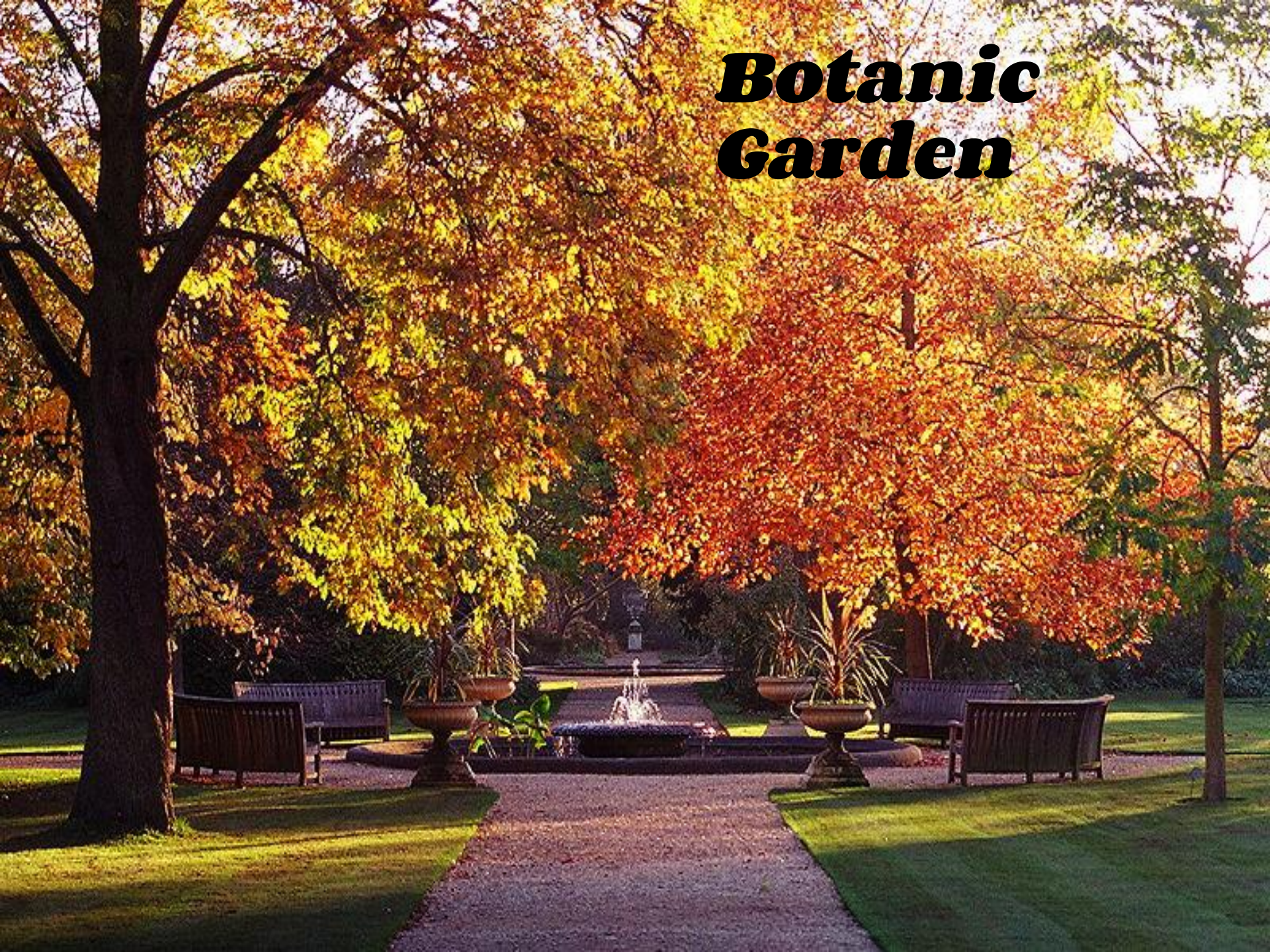
# OXFORD

UNIVERSITY PRESS





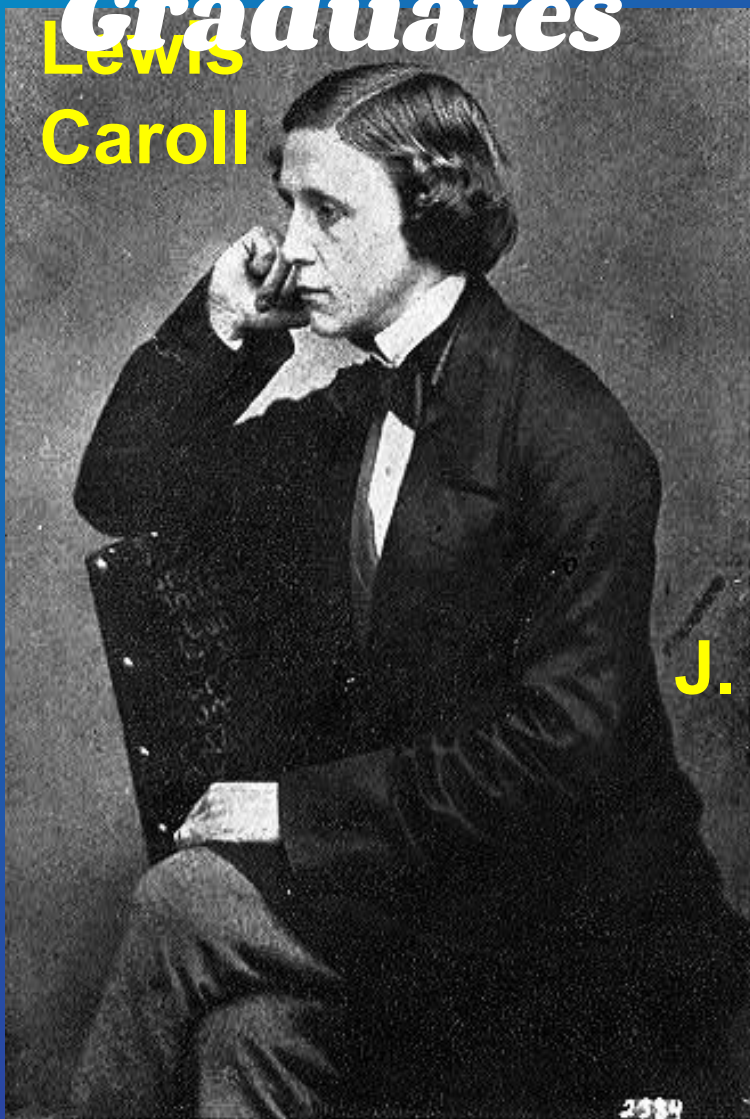
# ***Botanic Garden***





# Famous Graduates

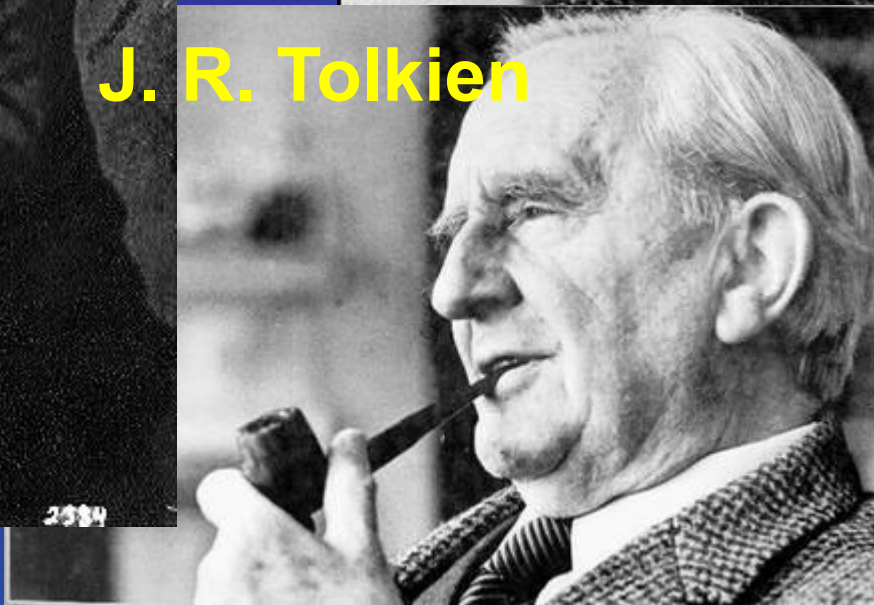
Lewis  
Carroll



Oscar  
Wilde



J. R. Tolkien





**Famous  
Graduates**  
Margaret Thatcher



**Bill Clinton**

# ***Famous Graduates***

- **4** British and **8** foreign kings
- **47** Nobel-prize winners
- **25** British Prime Ministers
- **28** foreign presidents and prime ministers

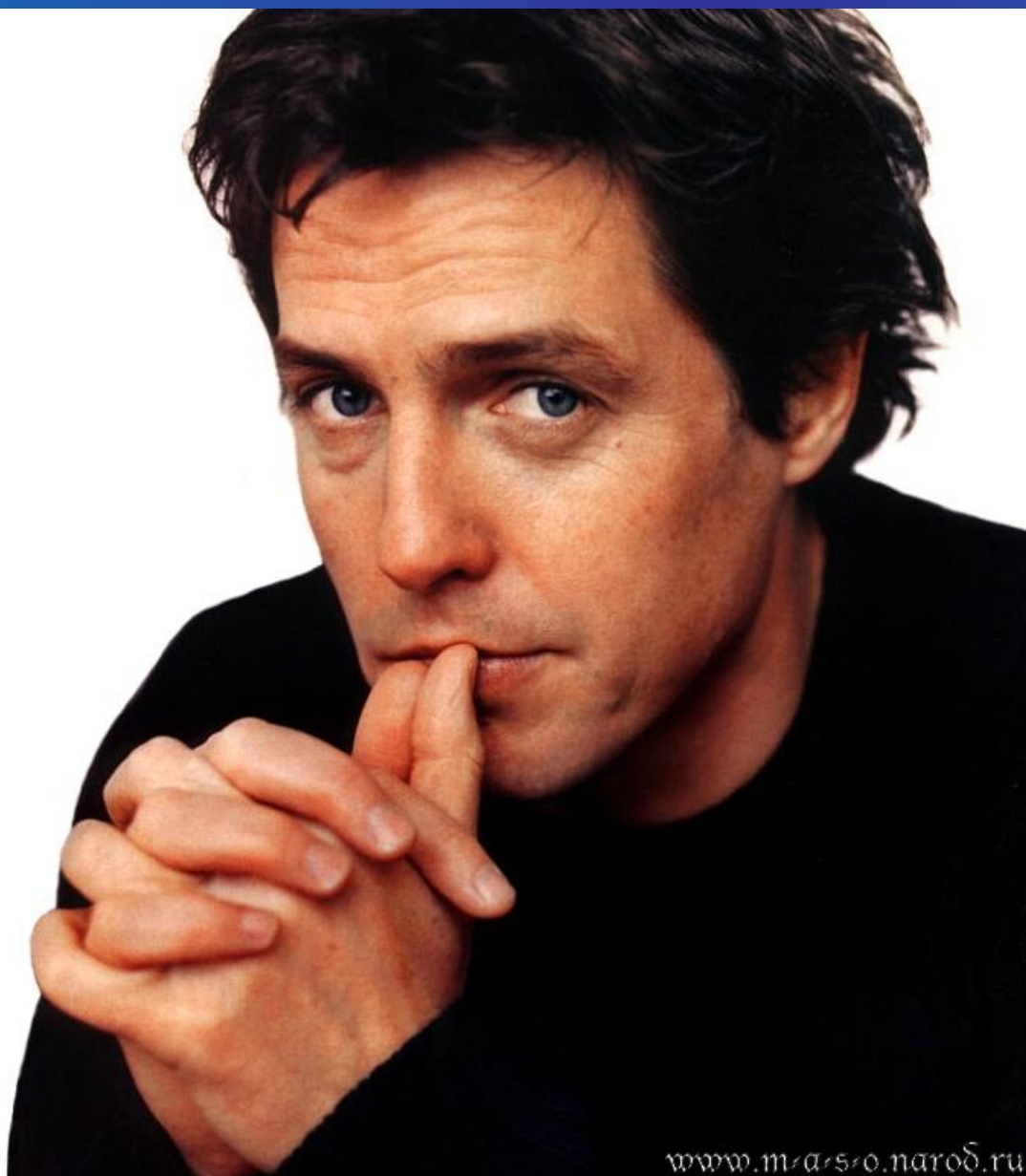


**Tim Berners**

**Lee**



# Hugh Grant





An aerial photograph of a historic university campus, likely Oxford. The image features a large, prominent dome on the left side, surrounded by numerous Gothic-style buildings with intricate stonework and spires. The architecture is made of light-colored stone, and the roofs are dark. The sky is blue with scattered white clouds. The overall scene is a dense, historic urban environment.

***Thank you  
for your  
attention!!!***