

















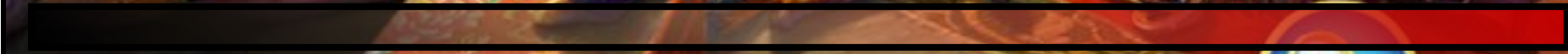








# FIND GRAPES







**FIND A VIOLIN**



# FIND KEYS





A highly detailed and cluttered workshop or workshop scene. The room is filled with various tools, objects, and furniture. In the background, a stone fireplace is lit with a fire, and several candles are burning on a mantel. A large, ornate wreath hangs on the wall above the fireplace. To the right, a coat hangs on a rack. In the foreground, a wooden table is covered with various items, including a bowl of grapes, a mouse, a blue plate, a funnel, a teapot, and several tools. A small, dark-colored airplane is visible in the upper right background, circled in red. The overall atmosphere is warm and cozy, with a focus on craftsmanship and detail.

**FIND A PLANE**





FIND A LETTER



# FIND A PIECE OF PIZZA





FIND A CD





# FIND A SCHOOLBAG







# FIND A BUTTERFLY



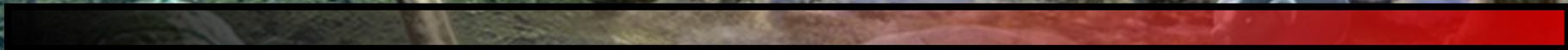
A detailed, cluttered alleyway scene. On the left, a blue recycling bin is overflowing with items like a CD, a water bottle, and a fish. A white bird is perched on a ledge above. The ground is covered with trash, including a pizza slice, a water cooler, a trash can with a cat on top, and various tools. On the right, a red brick wall features a glowing red 'EXIT' sign and a door with graffiti. The scene is lit with a mix of blue and red light, creating a gritty, urban atmosphere.

FIND A CAP



UNION HOUSE

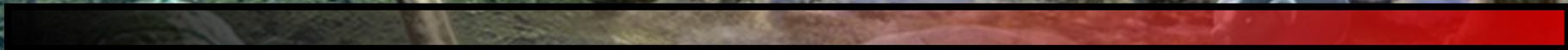
FIND A GUITAR





UNION HOUSE

FIND A SHOE





UNION HOUSE

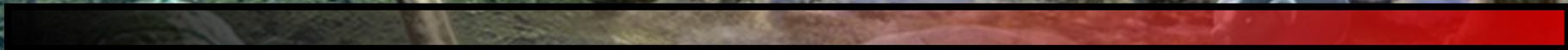
# FIND A PIGGY BANK





UNION HOUSE

FIND A TRUMPET





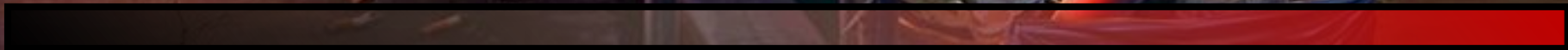
UNION HOUSE

FIND A FISH





# FIND SUNGLASSES



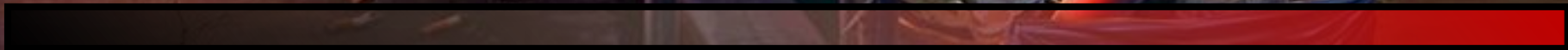


# FIND A RAT





# FIND A DOLL





**FIND A BICYCLE**





# FIND A WATCH





# FIND A FOOTBALL





# FIND A RABBIT





# FIND THREE BALLOONS





# FIND A LADYBUG





# FIND A BOOK





# FIND A CAMERA





# FIND AN UMBRELLA





# FIND A HAT





# FIND AN OLD PHONE





A vibrant, detailed garden scene featuring a central fountain with a tiered waterfall. In the foreground, a wooden table is set with a teapot, cups, a camera, a boombox, and a violin. A swan swims in a circular pool. The background shows a stone wall with a clock, a statue, and a flag. The scene is filled with lush greenery, flowers, and various decorative items.

# FIND A CLOCK





# FIND A RING





# FIND A PINEAPPLE





# FIND A STAR





# FIND A MIRROR





# FIND A KNIFE





# FIND A MERMAID





# FIND A SANDWICH





# FIND A STAR





# FIND FLIPPERS





# FIND A TOY PLANE





FIND A MOUSE









# FIND A BIRD





FIND GLOVES





# FIND TWO MANGOES



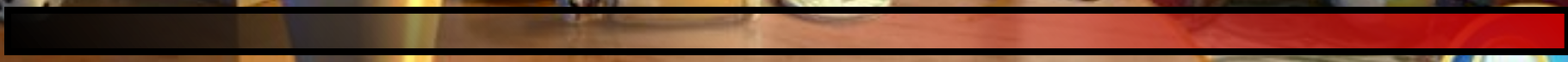




FIND A SNAKE



FIND KETCHUP





# FIND CUPCAKE





# FIND A LIZARD











FIND A GUN

LADY

T's



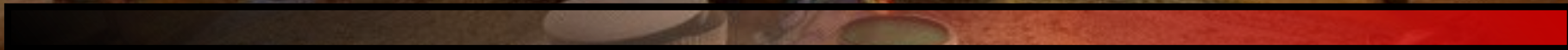


# FIND A LOLIPOP





# FIND COLOR PENCILS





# FIND A PAINT BRUSH





# FIND A DOLL





# FIND A WATCH





# FIND A BAG





# FIND A CLOCK





# FIND A PINK ROSE









FIND A CANDLE













# FIND AN ICE CREAM





# FIND A COOKIE





# FIND CEREALS









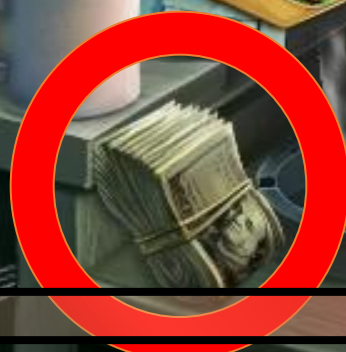








# FIND MONEY





FIND A PLATE







**WHO'S AWESOME?**

You're Awesome