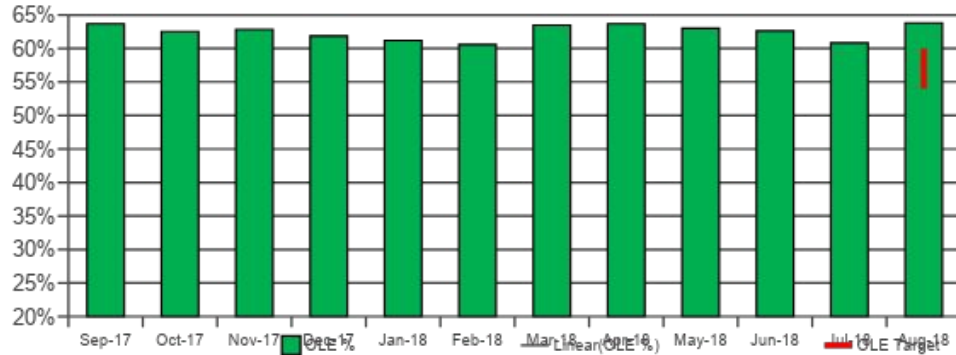


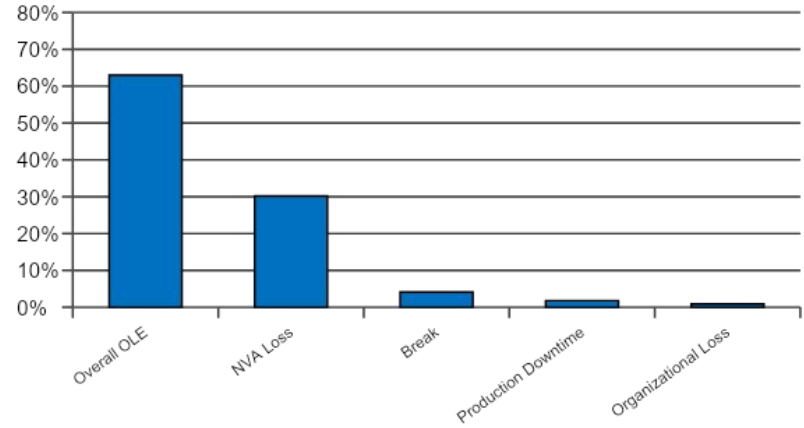
Operations – OLE

Action required	
Yes	No
	X

OLE (%)



OLE Detractors (last 6 Months)



Analysis / Conclusions:

- Metric in target

Ongoing actions:

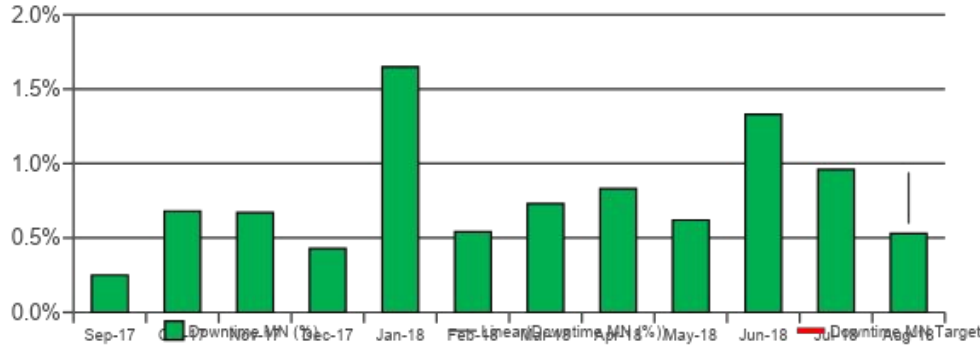
- No actions required

Team comments / decision: No additional action required (increase target)

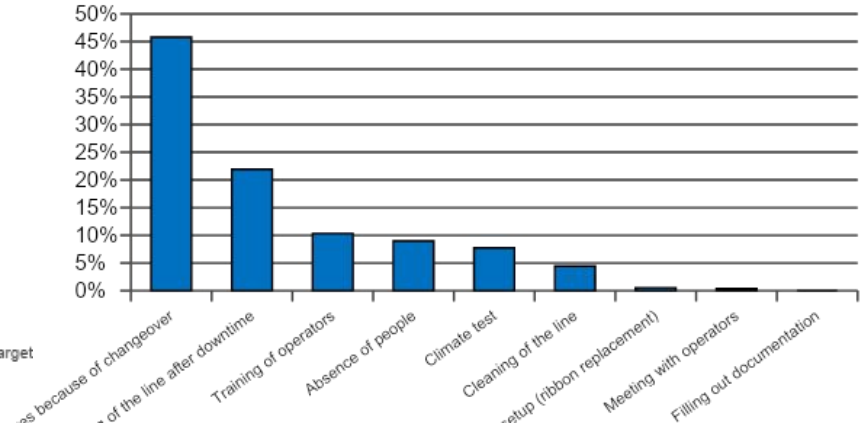
Operations – Downtime

Action required	
Yes	No
	X

Downtime MN (%)



Downtime MN Detractors (last 6 Months)



Analysis / Conclusions:

- Main downtimes in January were wastes because of NPI (line Axis) and filling of the line after downtime

Ongoing actions:

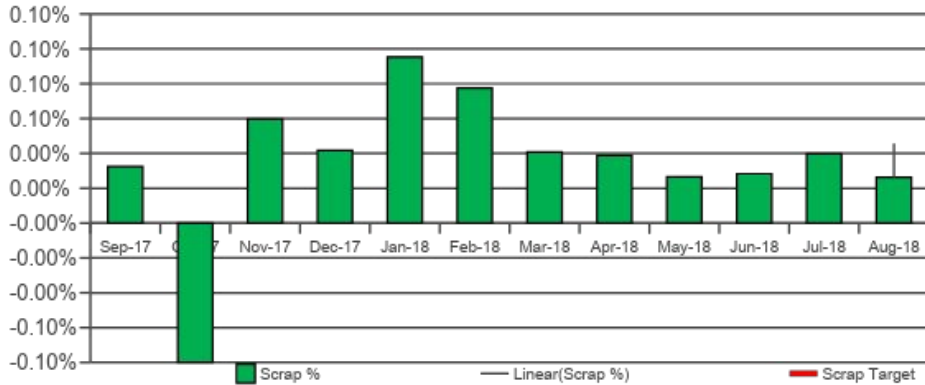
- No action required

Team comments / decision: No action required

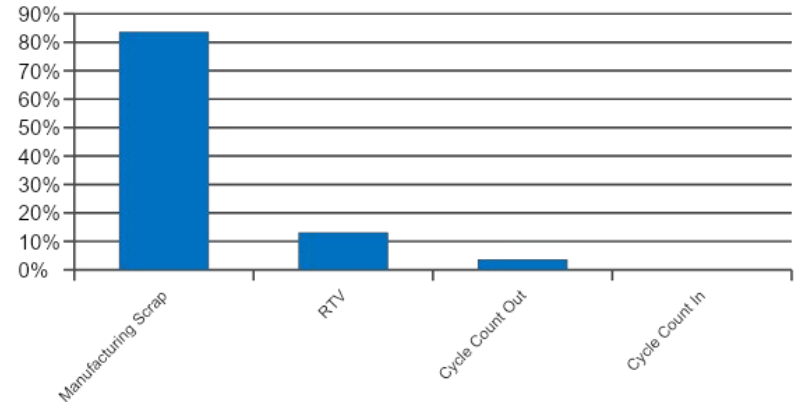
Operations – SCRAP

Action required	
Yes	No
	X

Scrap %



Scrap detractors (last 6 Months)



Analysis / Conclusions:

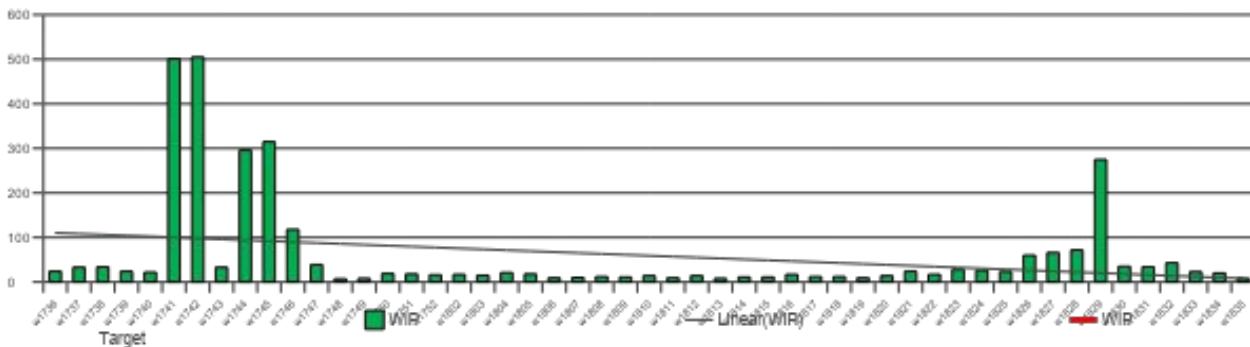
- Main contributor overall scrap because of RTV (components keep in RTV more than year). Approved by BU
- Main contributor Manufacturing scrap without RMA number. Approved by BU

Ongoing actions:

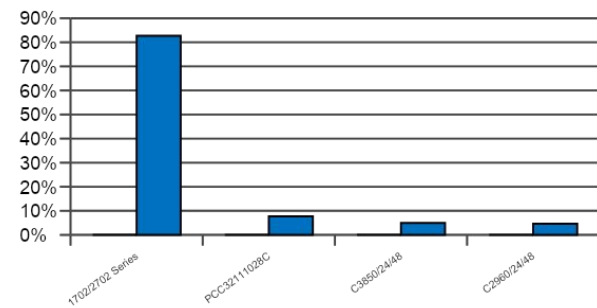
- Task ID 44689 - Специальное приспособление для установки платы (списание старой платы, по которой изготавливался JIG) – Cisco. Брак при запуске нового продукта (Компонент 800-43302-03 ASY,ELMECH,Sword Broadcom GH)
- JOS ID 112882 - Брак компонентов

Team comments / decision: No additional action required

WIP



WIP Detractors (last 6 Months)



Analysis / Conclusions

Failure mode / Defect code	%	WIP Detractors Last 6 Months
1702/2702 Series	82,69%	215 шт без меток - заблокированы до согласования с заказчиком (Недоставка меток)
PCC32111028C	7,69%	20 шт. - не работает зеленая кнопка
C3850/24/48	5,00%	13 шт. - Заблокировано отделом QE(отмена заказов)
C2960/24/48	4,62%	12 шт. - Заблокировано отделом QE(отмена заказов)

Ongoing actions:

- No actions required

Team comments / decision: No additional action required