

# THE PRESENT CONTINUOUS TENSE



At the moment I'm playing football.

# THE PRESENT CONTINUOUS TENSE

**AFFIRMATIVE: Play**

I	am 'm	playing
You	are	
We	're	
They		
He	is	
She	's	
It		

# THE PRESENT CONTINUOUS TENSE



Is he playing football at the moment?

No, he isn't. He is running.

# THE PRESENT CONTINUOUS TENSE

## INTERROGATIVE: Play

Am	I	playing?
Are	you we they	
Is	he she it	

## NEGATIVE: Play

I	am not 'm not	playing
You We They	are not aren't	
He She It	is not isn't	

# WHAT IS SHE DOING?



draw

She is drawing a picture at  
the moment

**WHAT IS TWEETY  
DOING?**



**IT'S FLYING**

# VERB + ing (spelling rules)

listen + ing = listening

die (-ie□y) + ing = dying

writee + ing = writing

hopp + p + ing = hopping

travell + l + ing = travelling

Make **-ing** forms of each verb given.

begin

rub

listen

lie

swim

study

happen

get

use

admit

try

decide

come

put



# -ing forms

beginning

rubbing

listening

lying

swimming

studying

happening

getting

using

admitting

trying

deciding

coming

putting

# The Present Continuous Tense is used for

1. Actions which are happening at or around the moment of speaking.
  - Now *I'm doing the washing up.*
  - *She is working very hard nowadays.*
2. Temporary situations.
  - *I'm staying with a friend at the moment.*

# ACTIONS THAT ARE HAPPENING AT PRESENT (1)



They are dancing right now.

# TEMPORARY SITUATIONS (2)

They normally play tennis.



But this week they are skating.



# The Present Continuous Tense is used for

## 3. Changing or developing situations.

- *His English is getting better.*
- *It's getting colder.*

## 4. Fixed arrangements in the near future.

- *They are getting married next week.*

# CHANGING SITUATIONS (3)

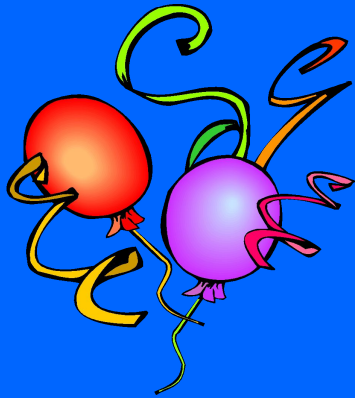
Yesterday it was very sunny.



Today it's raining more and more.



# FUTURE ARRANGEMENTS (4)



They are celebrating a party next weekend.

# THE PRESENT CONTINUOUS TENSE

## TIME EXPRESSIONS:

Now, at the moment, today, nowadays, this week.

**They are throwing snowballs  
now**

