
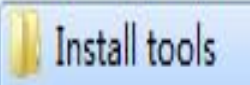
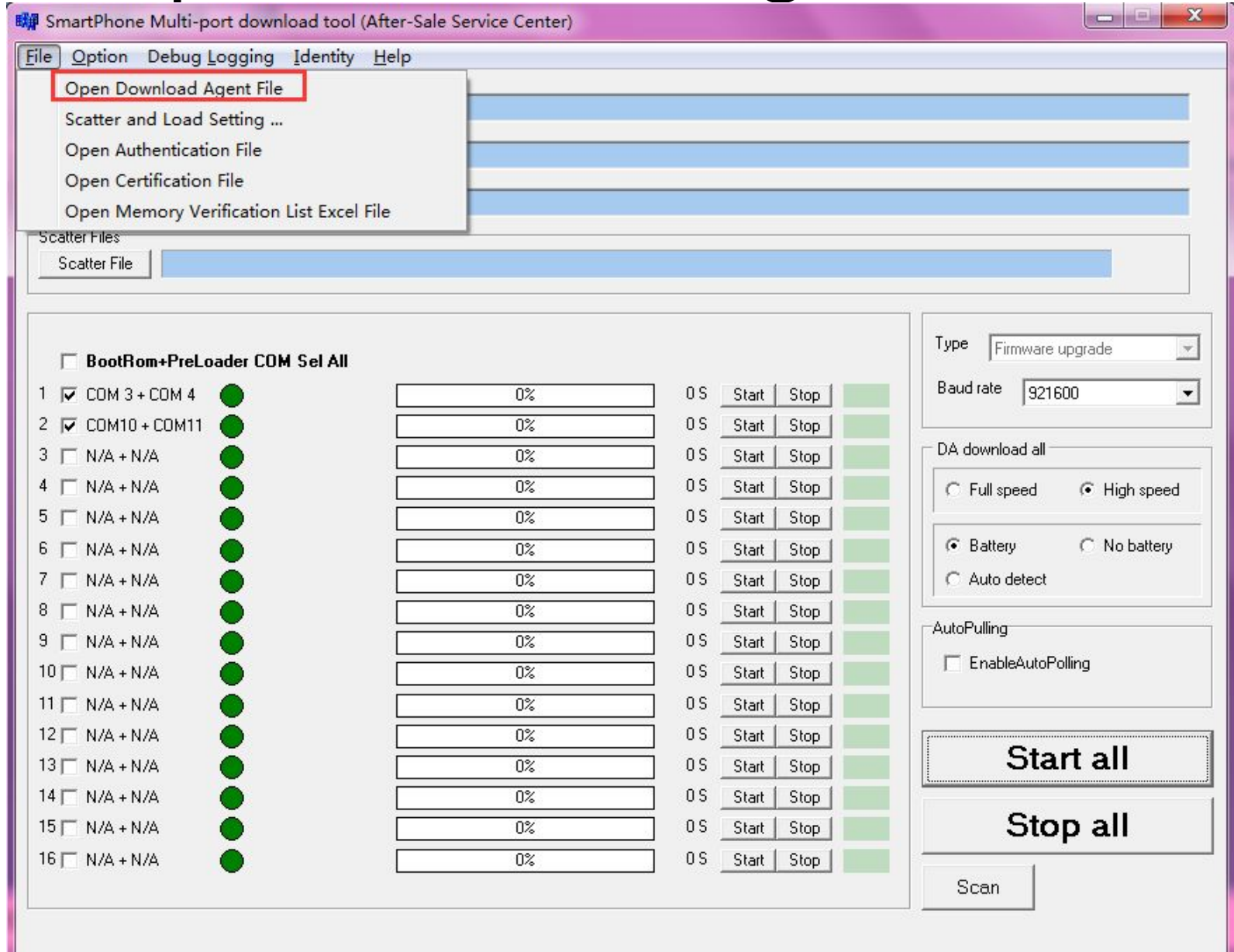


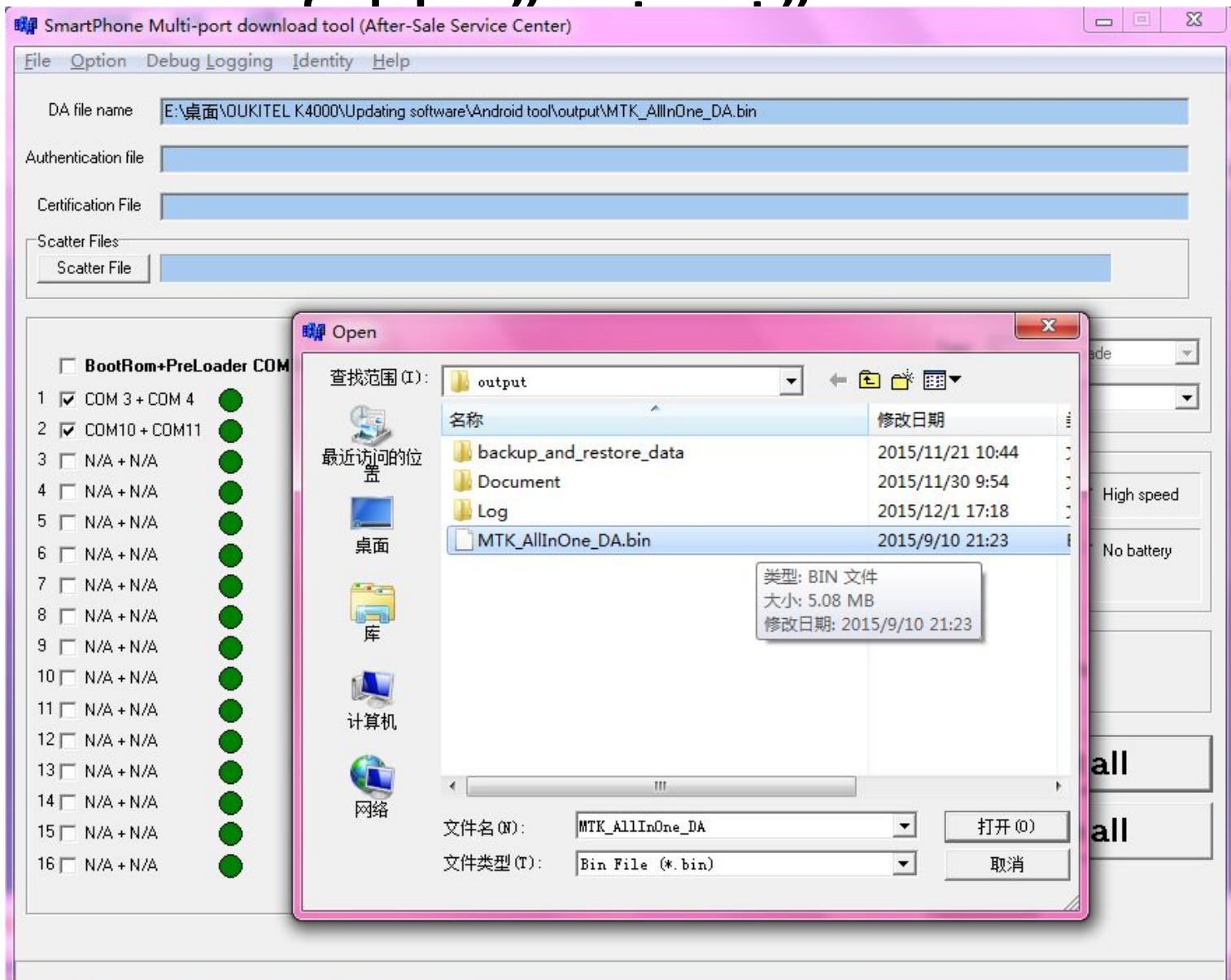
# Updating software

1. Double Click  SPMultiPortFlash... to enter the process  
(this icon is in folder "  Install tools -----  output )

# Open download agent file

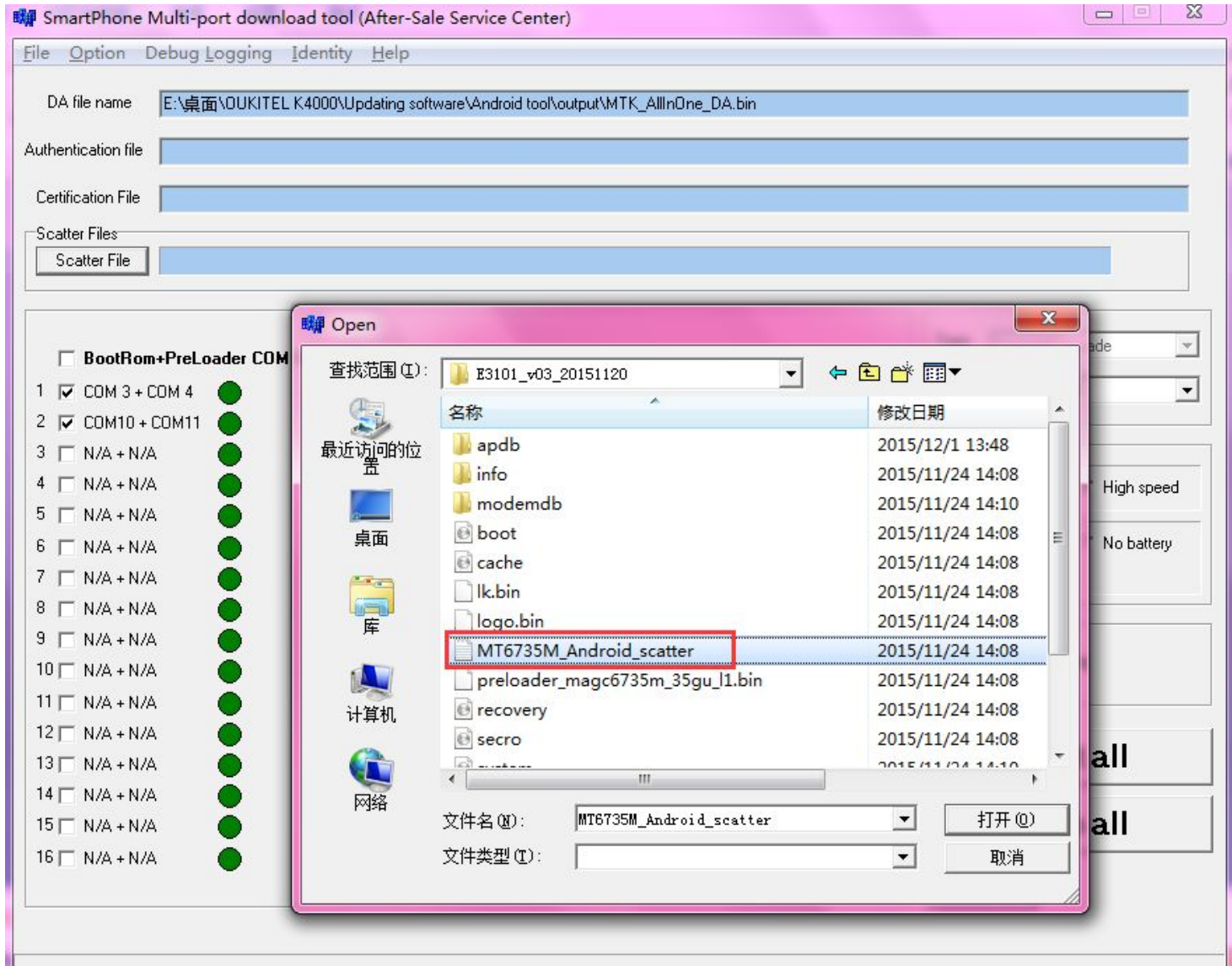


# Choose the file from the



Scatter file- choose the file “MT6735M\_Android\_scatter “(this file is in the folder

E3101\_v03\_20151120



# Click Scan, choose yes

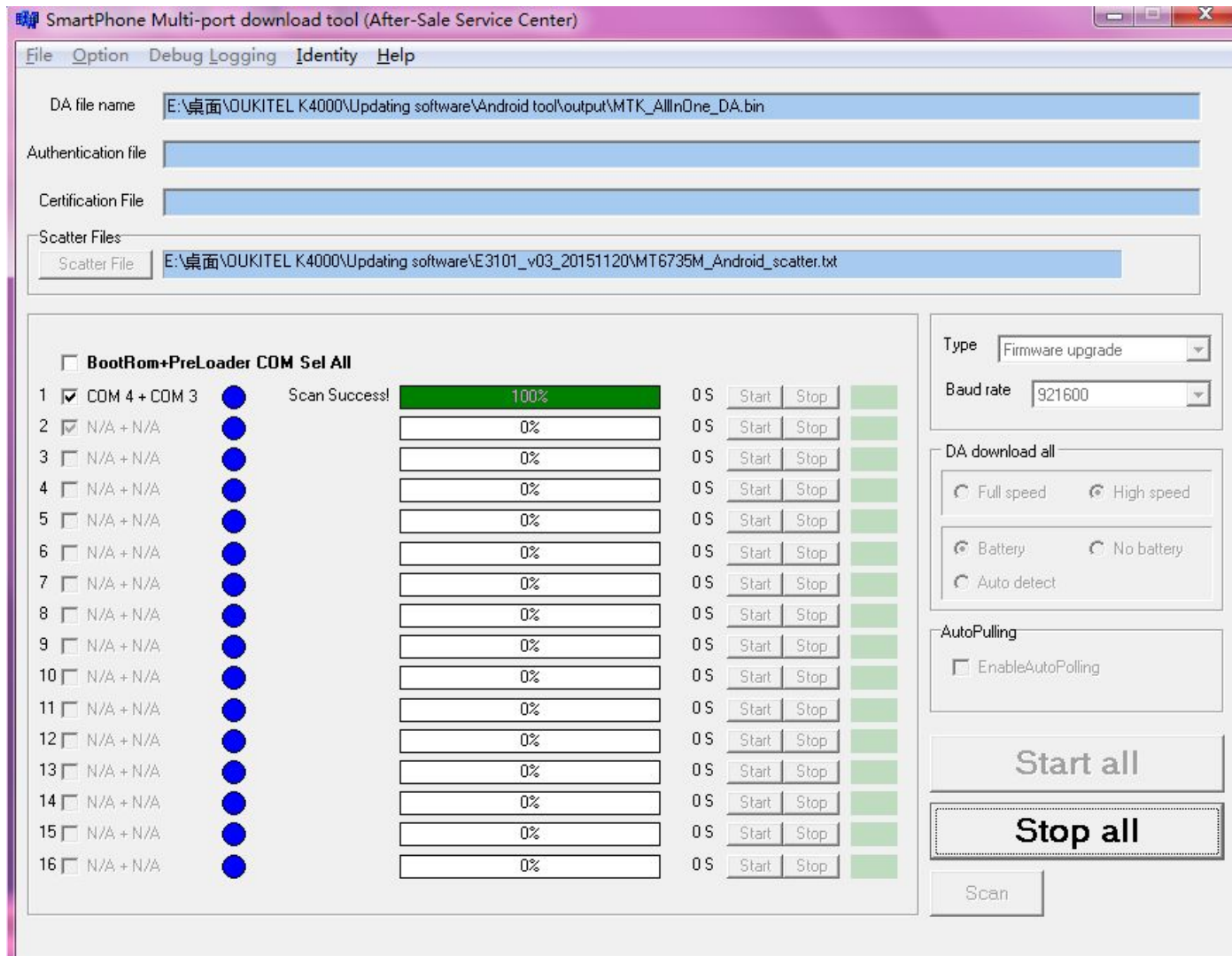
The screenshot shows the 'SmartPhone Multi-port download tool (After-Sale Service Center)' interface. The main window has a menu bar with 'File', 'Option', 'Debug', 'Logging', 'Identity', and 'Help'. Below the menu bar are several input fields: 'DA file name' (E:\桌面\OUKITEL K4000\Updating software\Android tool\output\MTK\_AllInOne\_DA.bin), 'Authentication file', 'Certification File', and 'Scatter Files' (with a sub-field 'Scatter File' containing E:\桌面\OUKITEL K4000\Updating software\E3101\_v03\_20151120\MT6735M\_Android\_scatter.txt).

On the left, there is a list of 16 COM ports. The first two are checked: 'COM 3 + COM 4' and 'COM10 + COM11'. Each entry has a green circle to its right. Below this list is a table with 16 rows, each containing a progress bar (0%), a time field (0 S), and 'Start' and 'Stop' buttons. To the right of the table are several settings: 'Type' (Firmware upgrade), 'Baud rate' (921600), 'Full speed' and 'High speed' radio buttons (High speed is selected), 'Battery' and 'No battery' radio buttons (No battery is selected), and 'Auto detect'. At the bottom right, there are 'Start all' and 'Stop all' buttons, and a 'Scan' button which is highlighted with a red box and labeled '1'.

A 'Scan Comport Warning' dialog box is overlaid in the center. It contains the text: 'The selected comports will be reset, are you sure to scan comports?'. Below the text are two buttons: '是(Y)' (Yes) and '否(N)' (No). The '是(Y)' button is highlighted with a red box and labeled '2'.



Long press volume+ key (phone in power off state) and connect your phone to computer. When the green bar shows, scan successfully, disconnect your phone now.





# When the first line goes to grey, updating finishes.

