

Ladder Lunacy

The Ultimate Guide to
How Not To Use a Ladder



Nice scaffold... nice place
to step, also



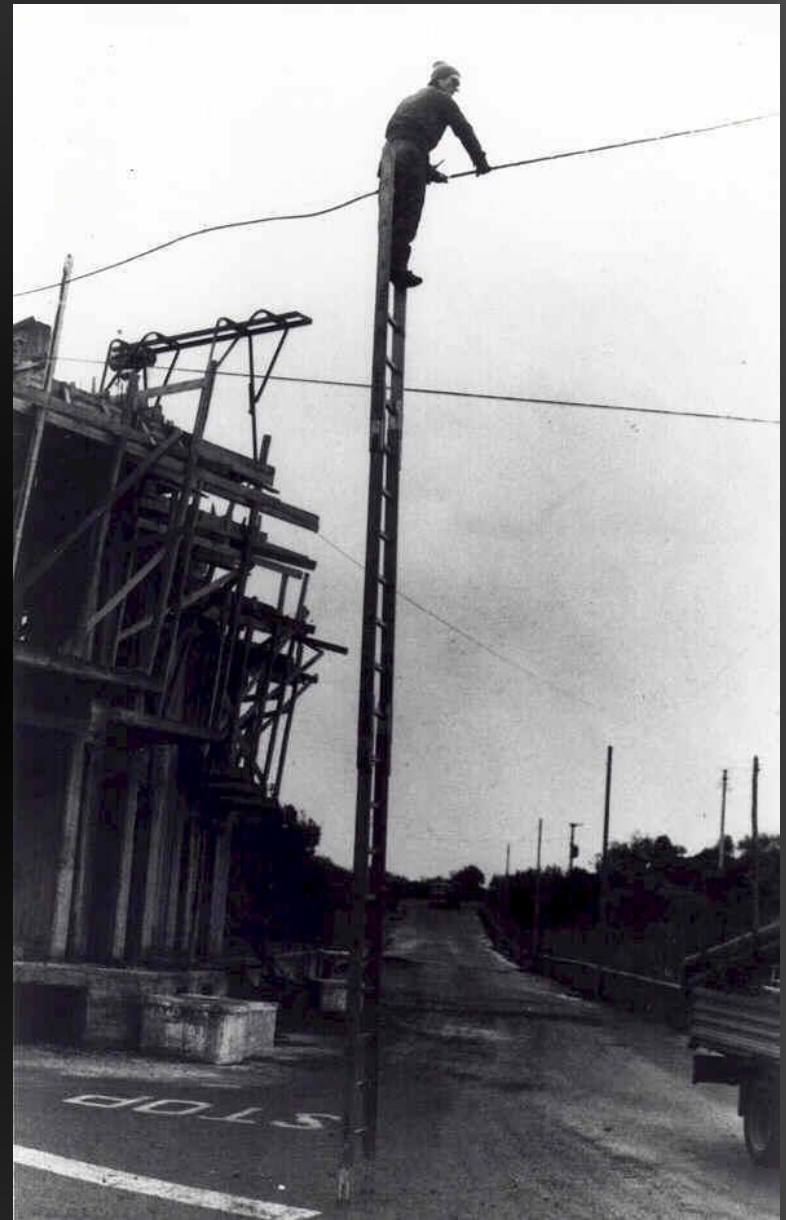
Naval Safety Center
www.safetycenter.navy.mil

Some reason you can't just move that ladder over a couple feet? Just curious.



Naval Safety Center
www.safetycenter.navy.mil

Now, all I have to do is figure out how to get down



Naval Safety Center
www.safetycenter.navy.mil

At least he's wearing his
eye protection



Naval Safety Center
www.safetycenter.navy.mil

Round pole, straight rung
(as if that was the
problem)



Naval Safety Center
www.safetycenter.navy.mil

The extension-ladder equivalent of free climbing



Naval Safety Center
www.safetycenter.navy.mil

What acrobats do as a part-time job



Naval Safety Center
www.safetycenter.navy.mil

Some people sure are
brave



Naval Safety Center
www.safetycenter.navy.mil

Those 2x4s offer a remarkable sense of protection



Naval Safety Center
www.safetycenter.navy.mil

Now let us pray (that the ladder doesn't slip)



Naval Safety Center
www.safetycenter.navy.mil

And it *still* isn't quite tall enough, darn it



Naval Safety Center
www.safetycenter.navy.mil

When two heads aren't better than one



Naval Safety Center
www.safetycenter.navy.mil

On a ladder, your brakes should be the least of your worries



Naval Safety Center
www.safetycenter.navy.mil

“OK, that’s fixed, now climb it.”

“No, you climb it.”

“No, you climb it.”



Naval Safety Center
www.safetycenter.navy.mil

Misunderstanding the “Not” in “Not-a-Step”



Misunderstanding the “Not” in “Not-a-Step,” Part 2



Naval Safety Center
www.safetycenter.navy.mil

Seriously, here are some rules

- Use the right kind of ladder for your task. Most homeowners need a stepladder and a straight ladder (usually an extension ladder).
- Read and follow the manufacturer's instructions on the label attached to the ladder.
- Make sure your ladder is tall (or long) enough. For stepladders, obey the "not a step" markings on the top steps and the shelf.



Rules, part 2

- Check your ladder for damage to the rungs, steps, hinges and braces.
- Open stepladders fully. Lock the spreaders on stepladders in place.
- Extension ladders should have "safety feet" that stabilize the ladder and keep it from slipping.



Rules, part 3

- Set your ladder on a solid surface and keep it level.
- When using a straight ladder, the base should be one foot away from the vertical surface for every four feet of height.
- If you're climbing onto your roof or a platform, the ladder should extend above the edge at least three feet.



Rules, part 4

- Never lean a ladder against an unstable surface, such as a tree limb.
- Face the ladder when climbing. Carry tools in a tool belt or a bucket that you can raise and lower with a rope from the ladder.
- Hold on with one hand while working on a ladder.
- Don't reach too far to the sides or behind you.



The End



Naval Safety Center
www.safetycenter.navy.mil



Visit the Naval Safety Center

Safety Tips, Photo of the Week,
Presentations, Magazines, and more!

www.safetycenter.navy.mil