

Butchers

Greengrocers

Pet shop

Chemists

Baker's

Newsagents

Florists



Game



A building or outdoor area in which plays and other performances are given

THEATRES IN GREAT BRITAIN



Aims of the *lesson*

- to improve speaking and reading skills
- to teach/revise vocabulary for stage plays and emotions
- to enlarge students' outlook
- to encourage students to join in a discussion

What different kinds of entertainment are
put on at the theatre?





Play, musical, opera, ballet, pantomime.

- **Play**

 - - a dramatic work for the stage or to be broadcast.
- **Musical**
 - - a play or film in which singing and dancing play an essential part.
- **Opera**
 - - the form or branch of musical and dramatic art represented by such compositions.
- **Ballet**
 - - classical dance form demanding grace and precision and employing formalized steps and gestures set in intricate, flowing patterns to create expression through movement.
- **Pantomime**
 - - funny musical play based on traditional children's stories, performed especially at Christmas

We estimate there are over 1,300 active theatres in the UK.

This includes theatres of all types and sizes, those used by professional performers and those used by amateur groups, arts centers, fringe theatres, pub theatres, open air theatres, pop up and temporary venues, and school or college theatres which are also used by the public.





National Theatre

Situated on the South Bank of the River Thames, the National Theatre has a reputation for producing some of the best theatre the UK has to offer. Housing the Olivier, Lyttelton and Cottesloe theatres under one roof, the varied programme offers a myriad of classic drama and new plays by contemporary playwrights, alongside a wonderful selection of bars and restaurants, exhibitions and a book shop.



Royal Exchange Theatre, Manchester

The Royal Exchange Theatre has been hosting theatre productions since 1976 and is housed in one of Manchester's most-beautiful buildings in the heart of the city centre. The theatre itself sports a stage 'in-the-round' and can seat an audience of up to 700, making it the largest theatre of its kind in Britain.



Festival Theatre Edinburgh

Situated in the heart of Edinburgh's Old Town, the Festival Theatre Edinburgh stands on the site of the old Empire Theatre, dating back from 1830. The current location was opened in 1994 and today, the venue has one of the largest performance areas in Scotland. Used primarily for ballet and opera, as well as large-scale music events



Royal Shakespeare Company

The Royal Shakespeare Company is one of the most-famous theatre companies in the world. The ensemble connects audiences all over the world with the works of William Shakespeare, as well as with a wide-ranging selection of contemporary playwrights and actors. The company is mostly located in Stratford-upon-Avon, the place of Shakespeare's birth, where performances are often accompanied by workshops and educational programs. Each year, the RSC attracts over one million visitors to the heart of the Midlands.



The Globe, London

The Globe Theatre is perhaps one of England's most famous theatres due to its close associations with the great William Shakespeare. The original theatre was built in 1588 by his theatre company, the Lord Chamberlain's Men, but was tragically destroyed in a fire in 1613. Today, a modern reconstruction of the three-story open-air amphitheater stands approximately 230 meters from the original site. Today, the theatre is built entirely of English Oak



Thin and thick questions

How many theatres are there in the UK?

When did you last go to the theatre?

What can you see in the theatre?

How many theatres are there in your village?



Role playing

Clerk: Hi. How can I help you?

Me: Oh, hi. I'd like to buy two students tickets for the Harry Potter and the Half-blood prince.

Clerk: O.K. What time do you want to see?

Me: 8:30

Clerk: Sorry, they(all tickets) are sold out. (We don't have seats available)

Me: What about the other time?

Clerk: Let me check. Um...We have four seats available at 5:30 and 7:00.

Me: Then, can I have two tickets at 7:00?

Clerk: Sure. No problem. Are you a student or an adult?

Me: a Student. (student)

Clekr: Do you have a student I.D. with you? (Please give me your student card.)

Me: O.K. Sure. Here it is.

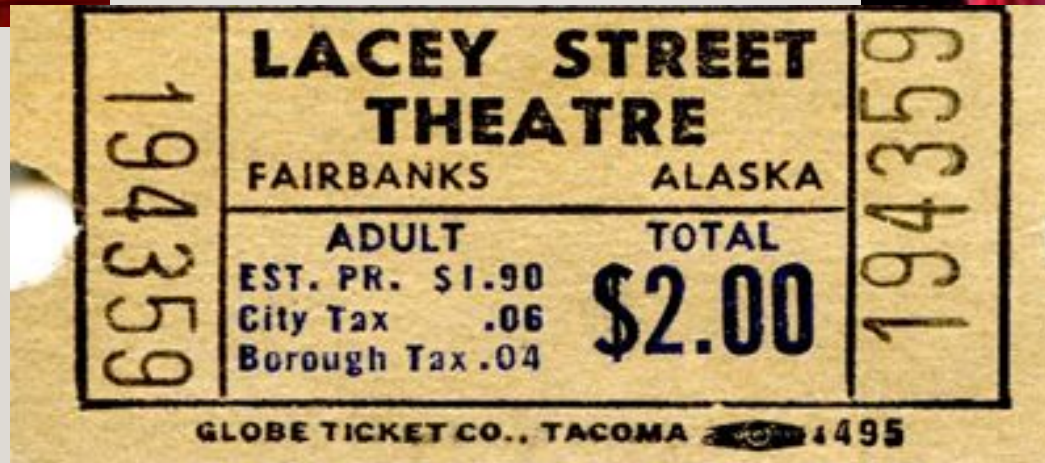
LISTENING GAP FILL

When I was growing up, I always _____ was for rich people. I _____ it is. Theatre tickets in London are pretty expensive, especially for a whole family. But _____, I found you could go to the theatre _____. I found dozens of smaller theatres in London that had very reasonable prices. You could _____ tickets for the big theatres. Going to the theatre is a wonderful experience. It's great sitting in your seat with your programme. I _____ the set will look like. I'm always impressed by the quality of acting. Actors _____. They stand on stage in front of an audience of hundreds, and _____ confident.



When I was growing up, I always **thought the theatre** was for rich people. I **guess in a way** it is. Theatre tickets in London are pretty expensive, especially for a whole family. But **as I got older**, I found you could go to the theatre **quite cheaply**. I found dozens of smaller theatres in London that had very reasonable prices. You could **also get discount** tickets for the big theatres. Going to the theatre is a wonderful experience. It's great sitting in your seat with your programme. I **always wonder what** the set will look like. I'm always impressed by the quality of acting. Actors **are brave people**. They stand on stage in front of an audience of hundreds, and **look so calm and confident**.

'Association' or 'What is it?'



Complete the chart 'Insert'

Knew	Learnt	Want to know

Assessment: As I see it

Positive expressions:

Negative expressions:





Thank You
Thank You
Thank You!!!!