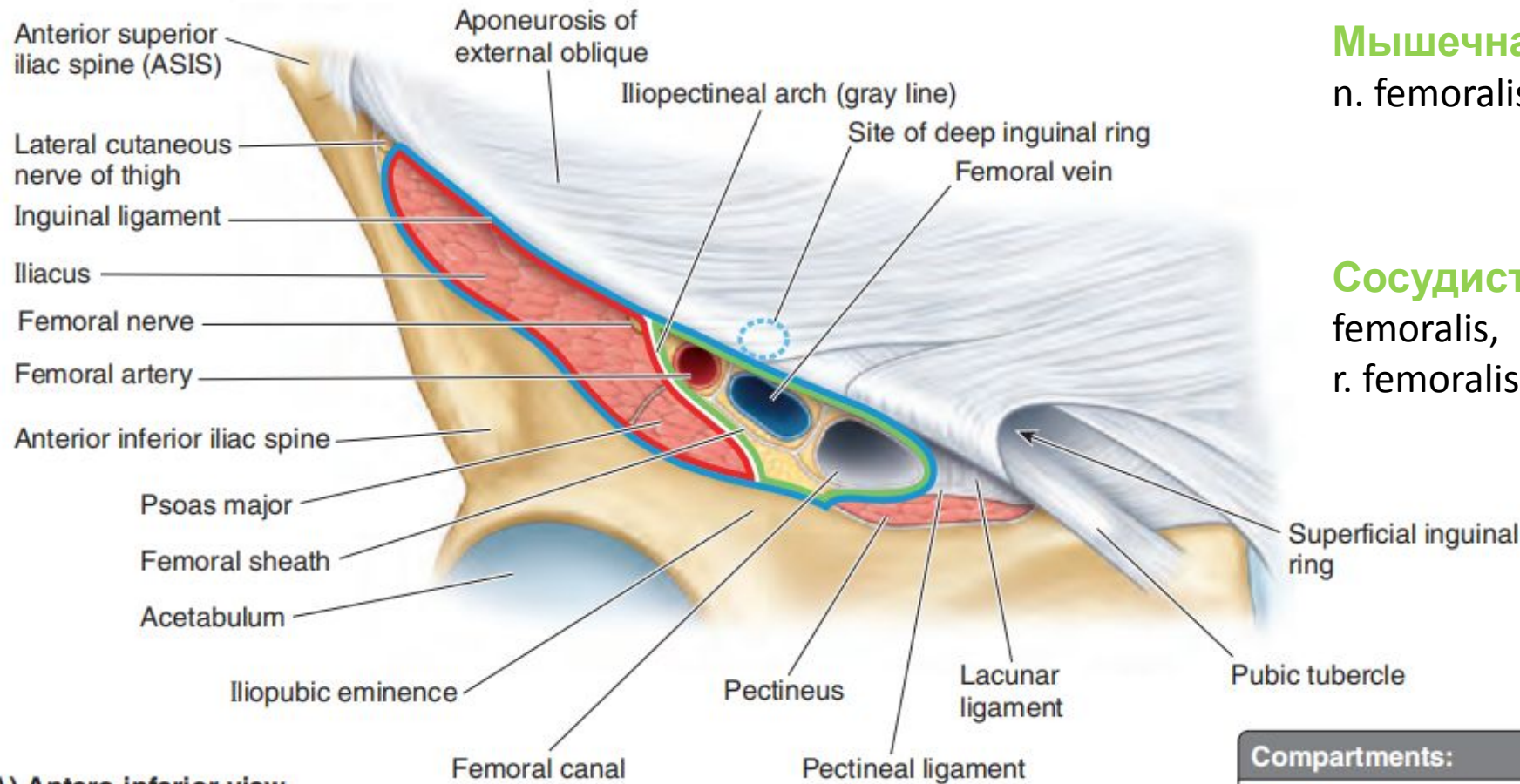


# Артерии свободной нижней конечности

БЕДРО

# Вспоминаем сосудистую лакуну



**Мышечная лакуна:** m. iliopsoas, n. femoralis, n. cutaneus femoris lateralis

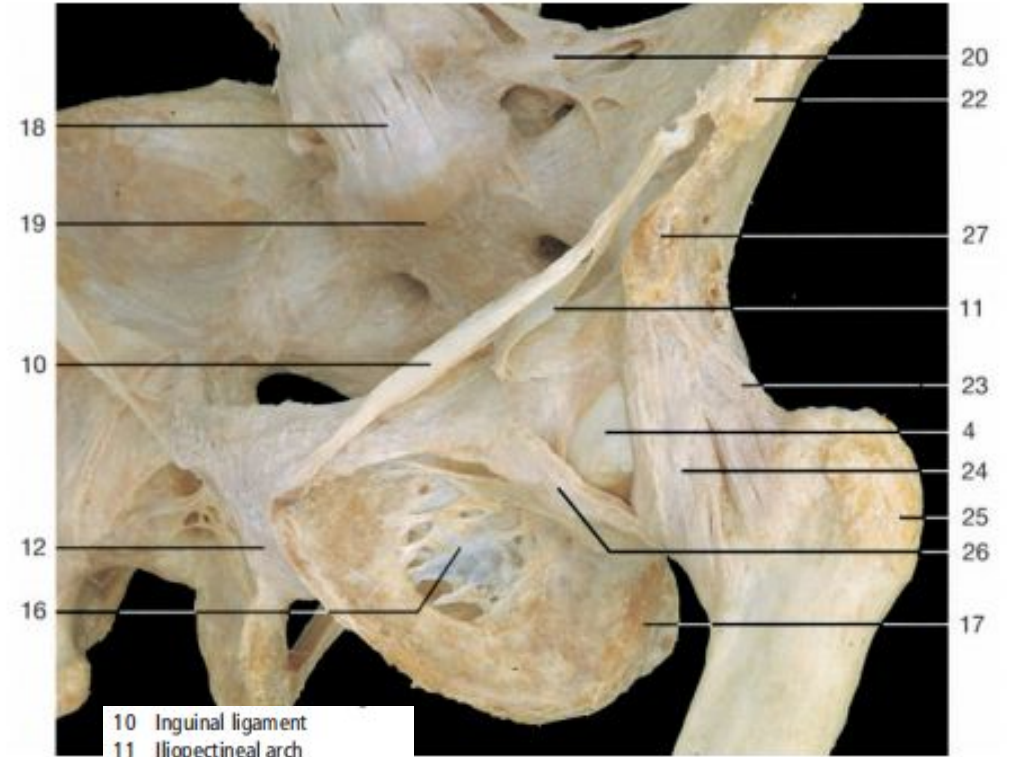
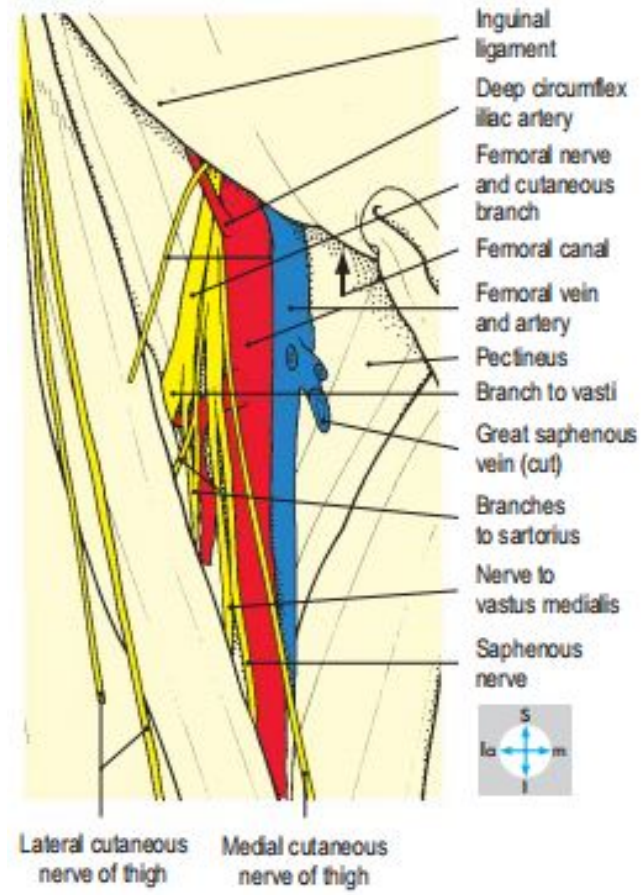
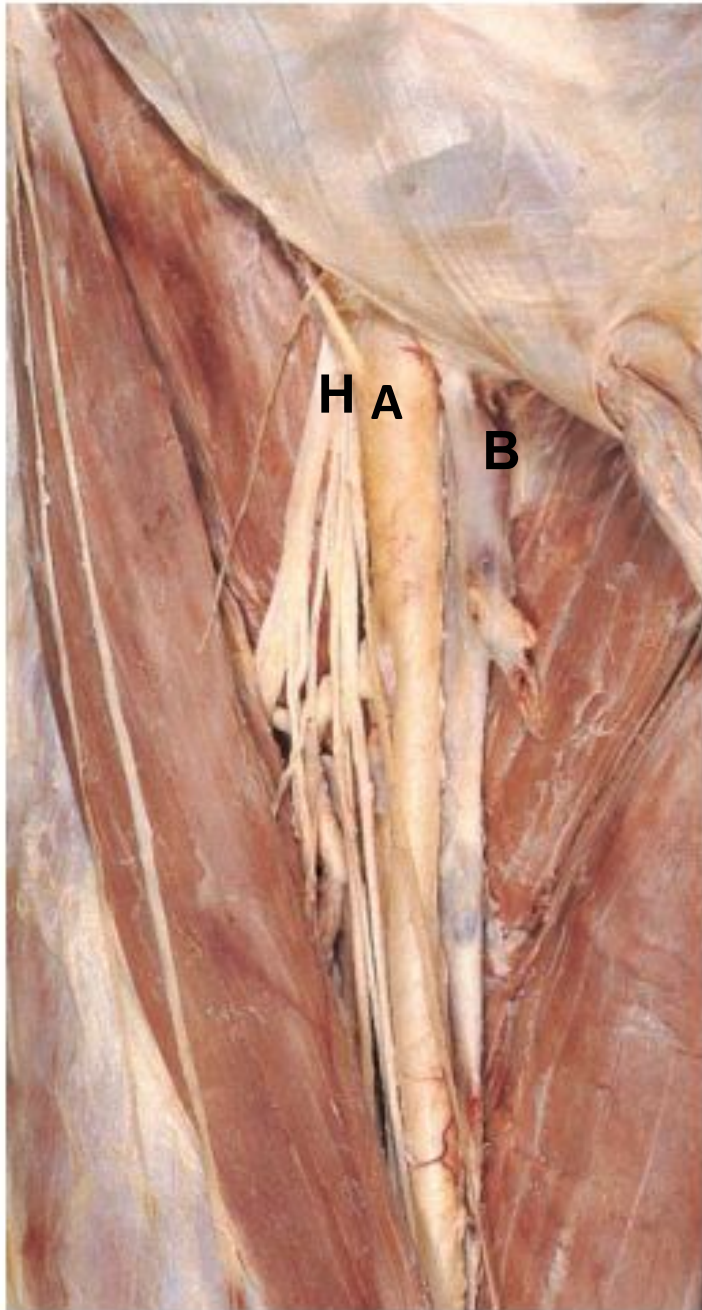
**Сосудистая лакуна:** a. femoralis, v. femoralis, r. femoralis n. genitofemoralis, n. ilioinguinalis

(A) Antero-inferior view

## Compartments:

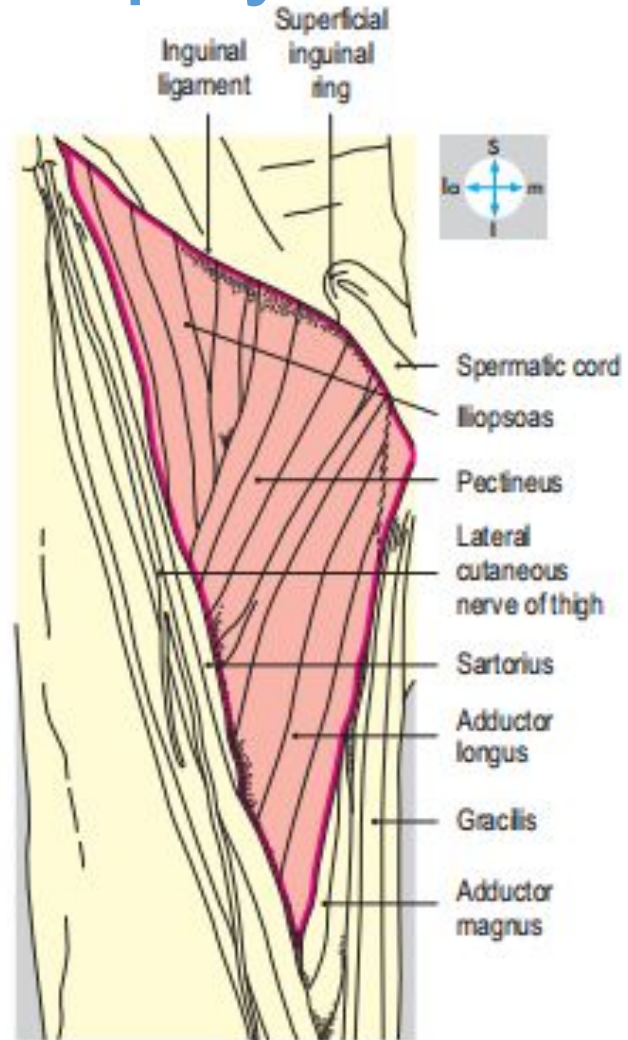
- Retro-inguinal space
- Muscular compartment
- Vascular compartment

# Вспоминаем сосудистую лакуну



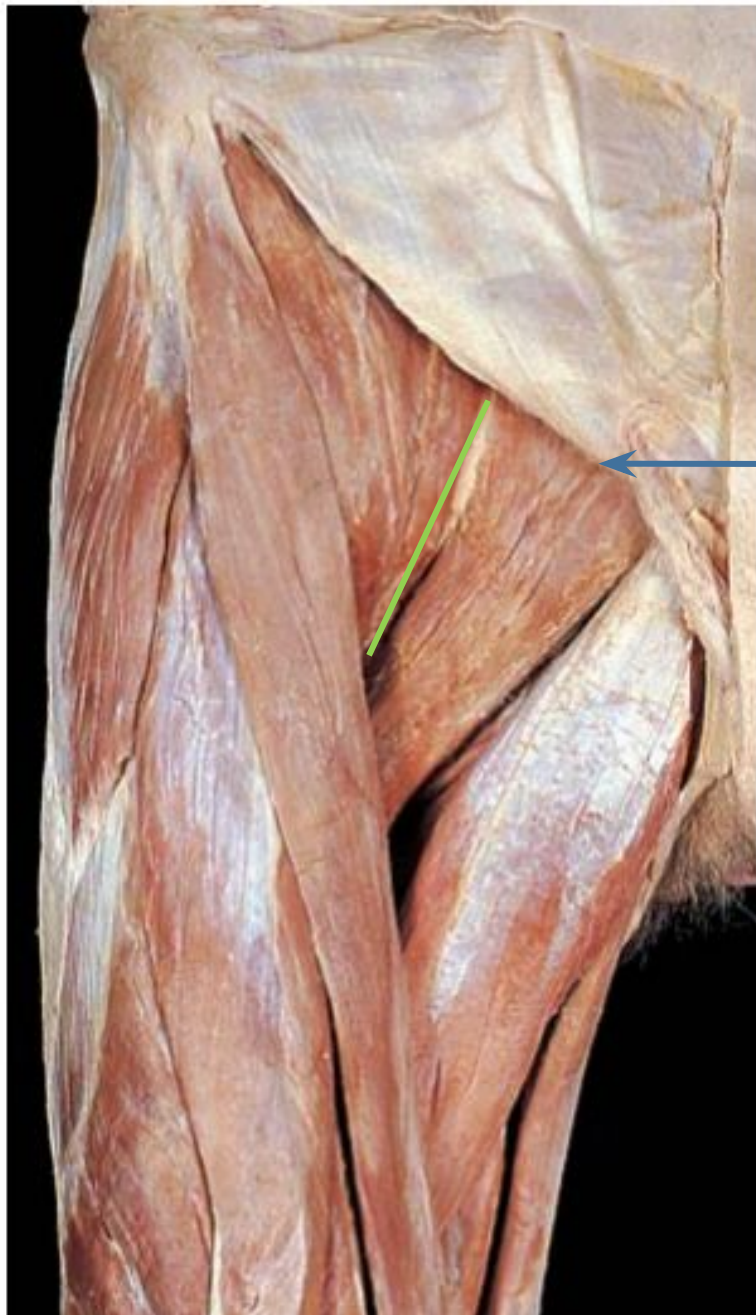
- 10 Inguinal ligament
- 11 Iliopectineal arch
- 12 Pubic symphysis
- 13 Pubis
- 14 Obturator canal
- 15 Ligament of head of femur
- 16 Obturator membrane
- 17 Ischium
- 18 Anterior longitudinal ligament (level of fifth lumbar vertebra)
- 19 Sacral promontory
- 20 Iliolumbar ligament
- 21 Iliac crest
- 22 Anterior superior iliac spine
- 23 Iliofemoral ligament (horizontal band)
- 24 Iliofemoral ligament (vertical band)
- 25 Greater trochanter
- 26 Pubofemoral ligament
- 27 Anterior inferior iliac spine

# Вспоминаем бедренный треугольник (треугольник Скарпа)

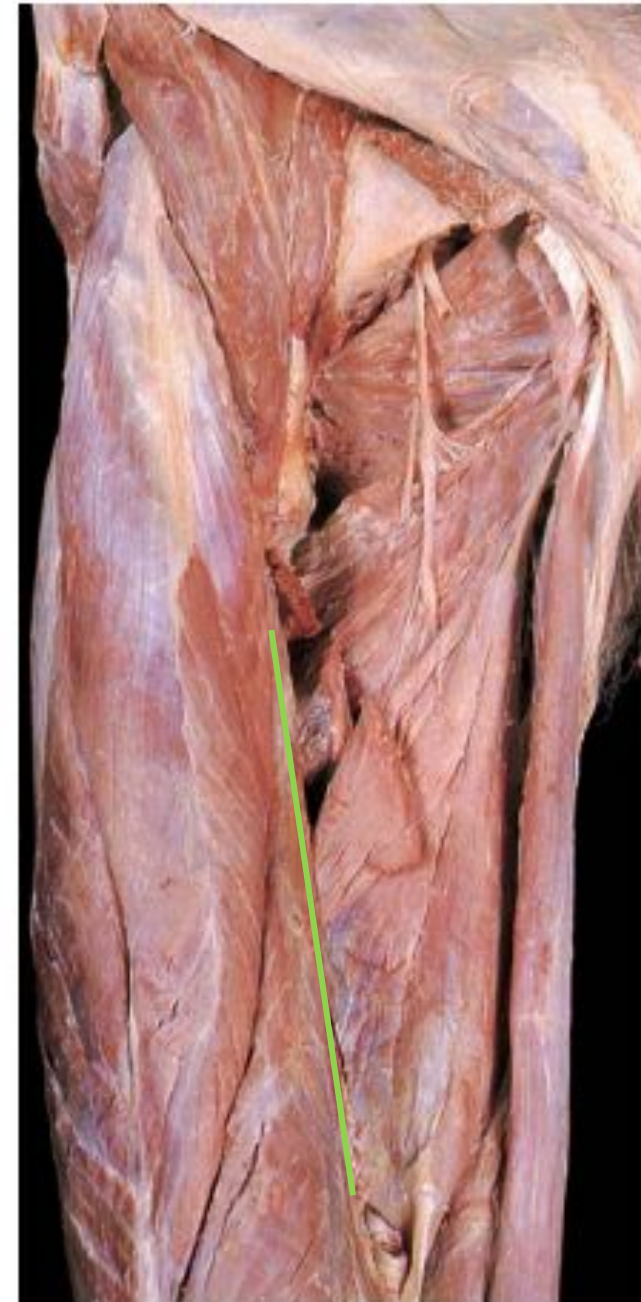


**Fig. 6.17** Boundaries and floor of the femoral triangle.

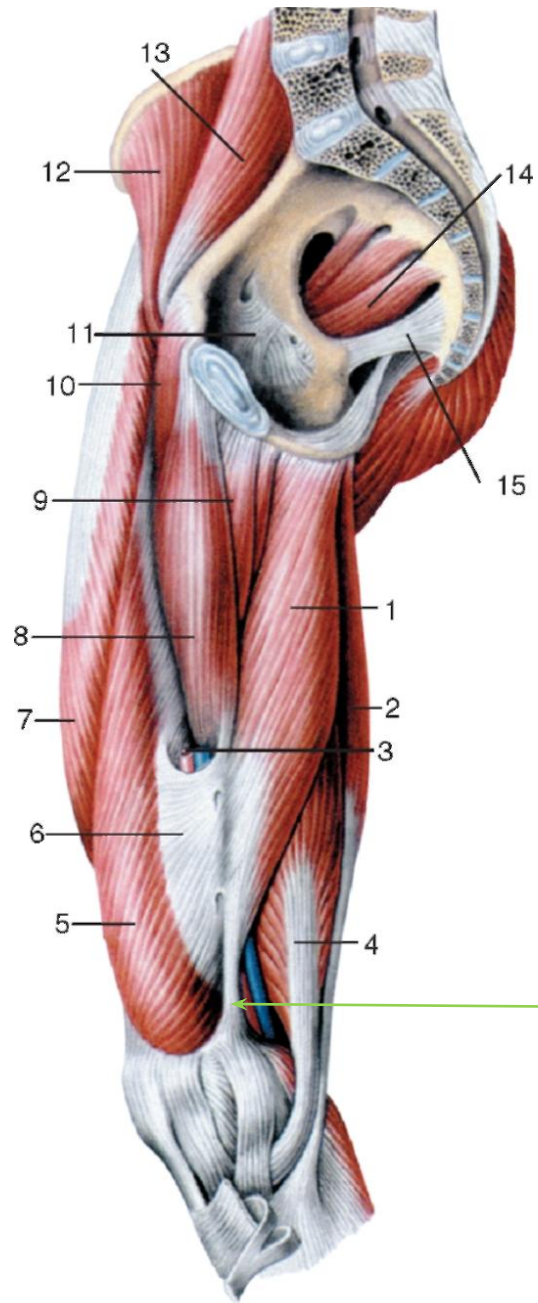




Вспоминаем  
подвздошно-  
гребенчатую и  
переднюю  
бедренную  
борозды

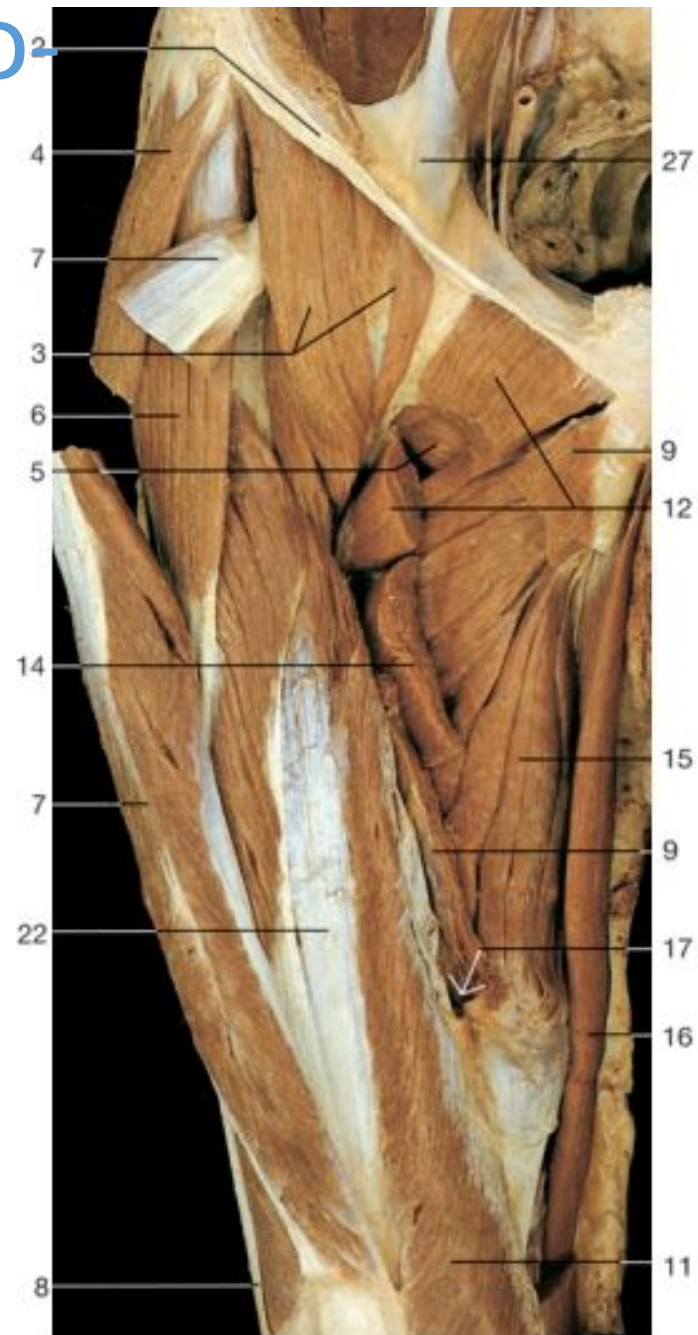


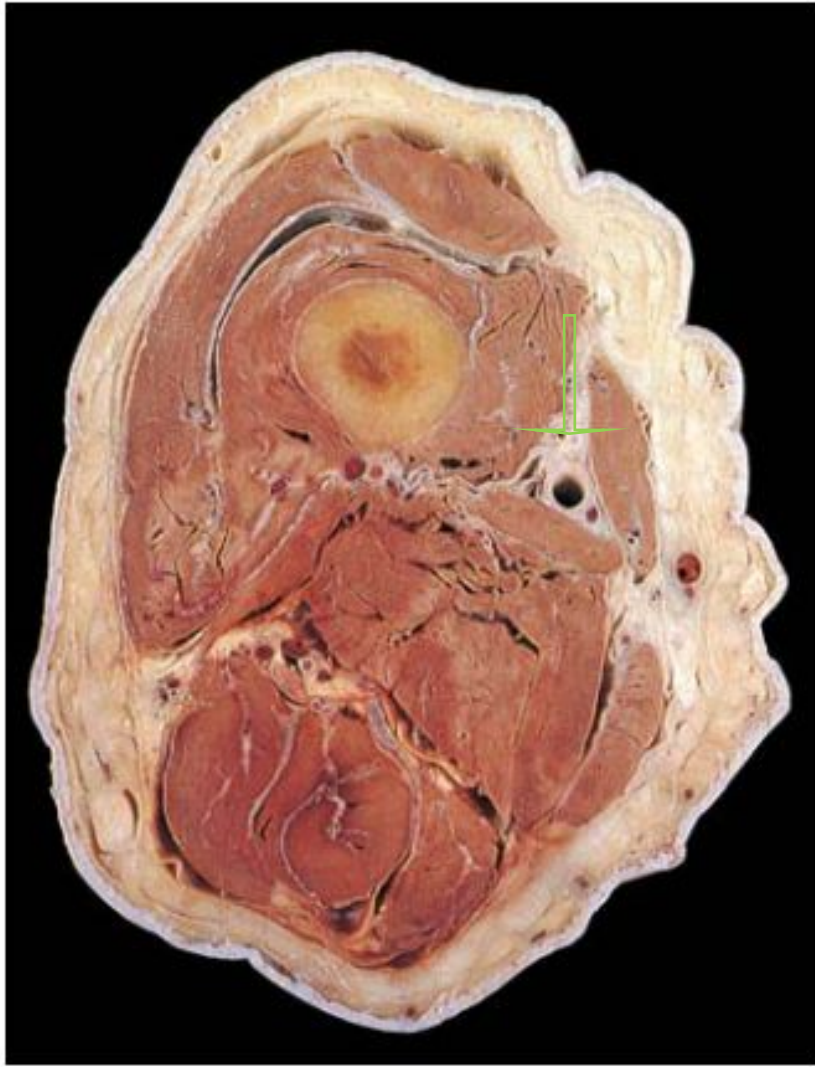
# Вспоминаем бедренно-подколенный (Гунтеров) канал



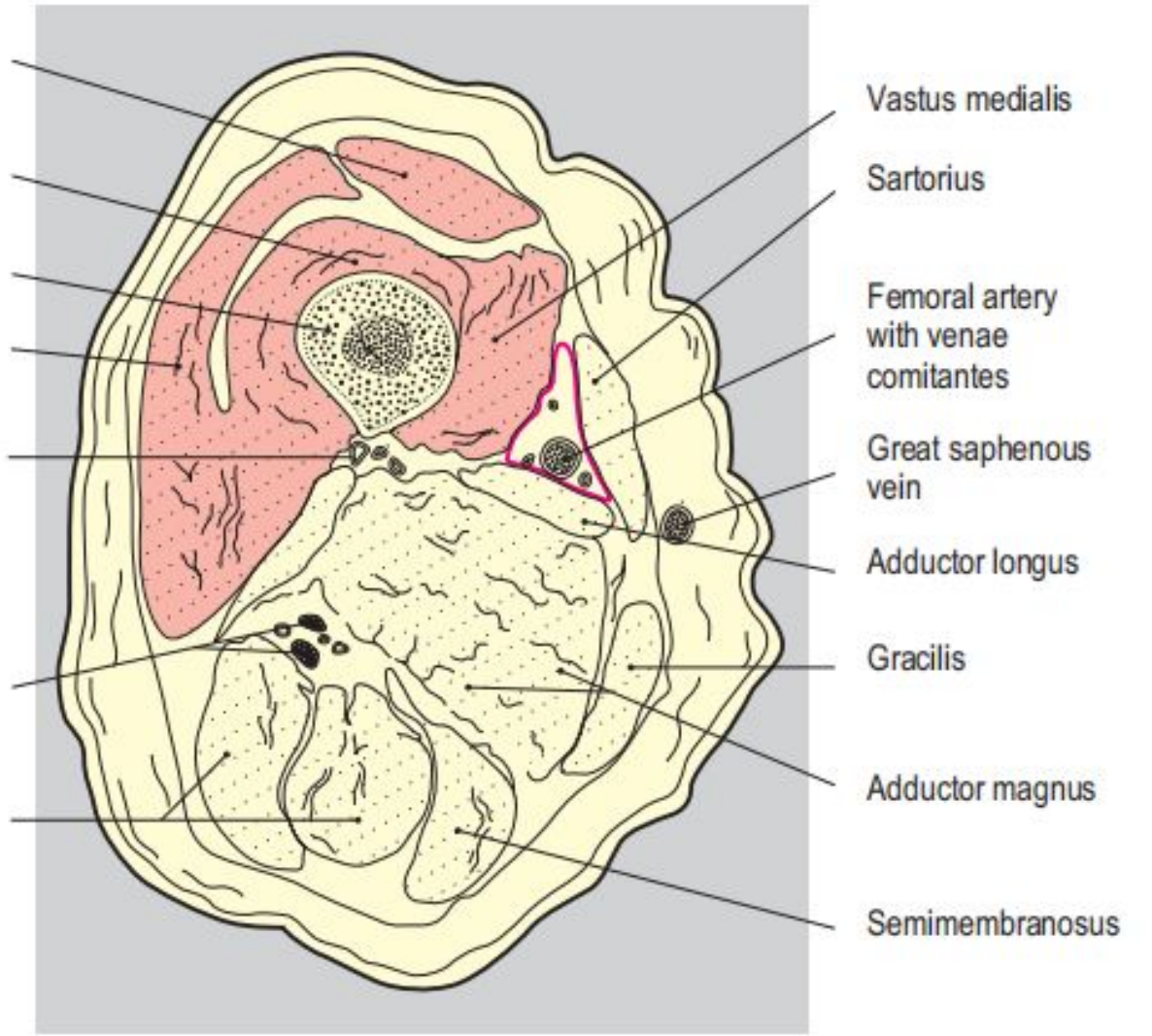
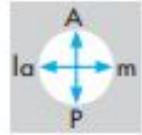
- 5 - медиальная широкая мышца
- 8 - длинная приводящая мышца
- 1 - большая приводящая мышца
- 6 - приводящая пластинка
- сухожильная щель б.п.м

- 1 Anterior superior iliac spine
- 2 Inguinal ligament
- 3 Iliopsoas muscle
- 4 Sartorius muscle
- 5 Obturator externus muscle
- 6 Tensor fasciae latae muscle
- 7 Rectus femoris muscle
- 8 Iliotibial tract
- 9 Adductor longus muscle (divided)
- 10 Vastus lateralis muscle
- 11 Vastus medialis muscle
- 12 Pectineus muscle (divided)
- 13 Adductor minimus muscle
- 14 Adductor brevis muscle (cut)
- 15 Adductor magnus muscle
- 16 Gracilis muscle
- 17 Adductor canal
- 18 Vasto-adductor membrane
- 19 Diaphragm
- 20 Quadratus lumborum muscle
- 21 Iliacus muscle
- 22 Vastus intermedius muscle



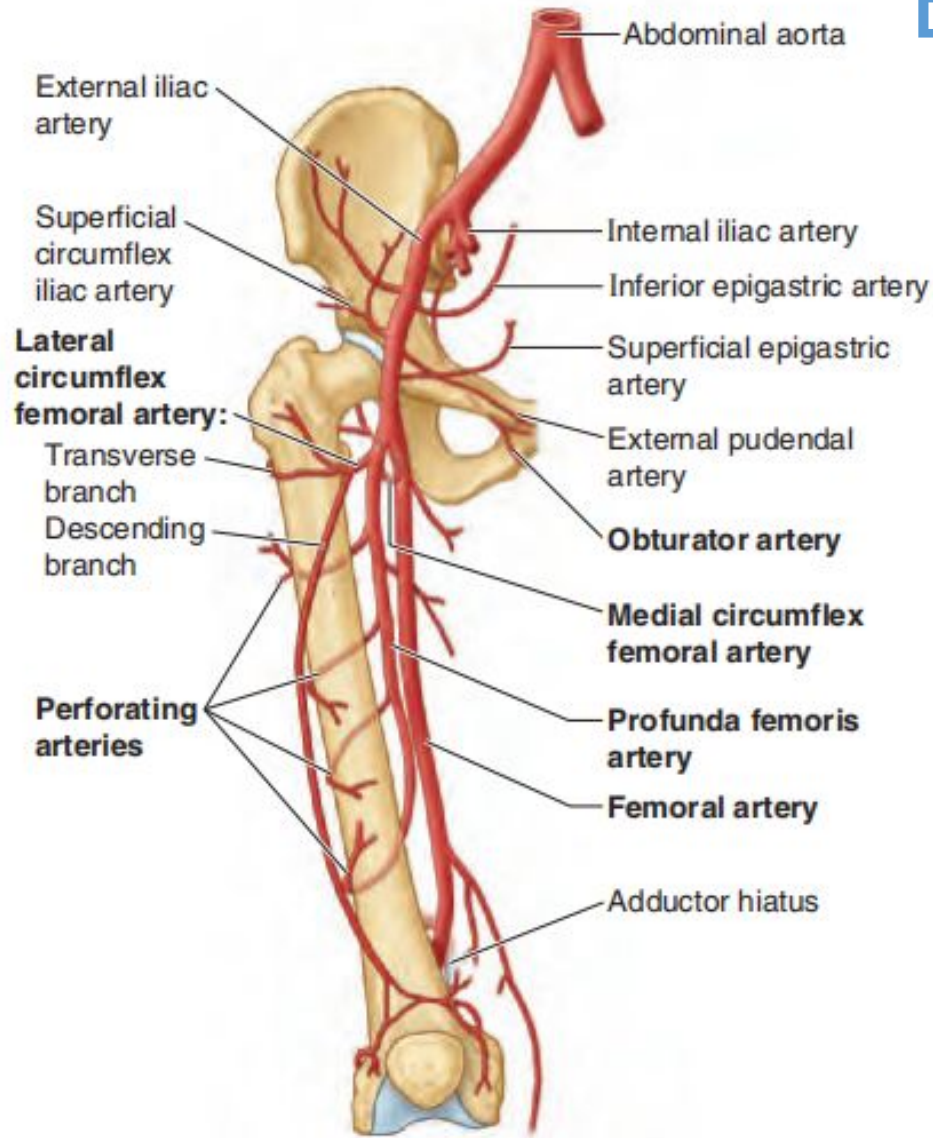


Rectus femoris  
 Vastus intermedius  
 Femur  
 Vastus lateralis  
 Perforating branches of profunda femoris artery and vein  
 Common fibular and tibial branches of sciatic nerve  
 Semitendinosus and biceps

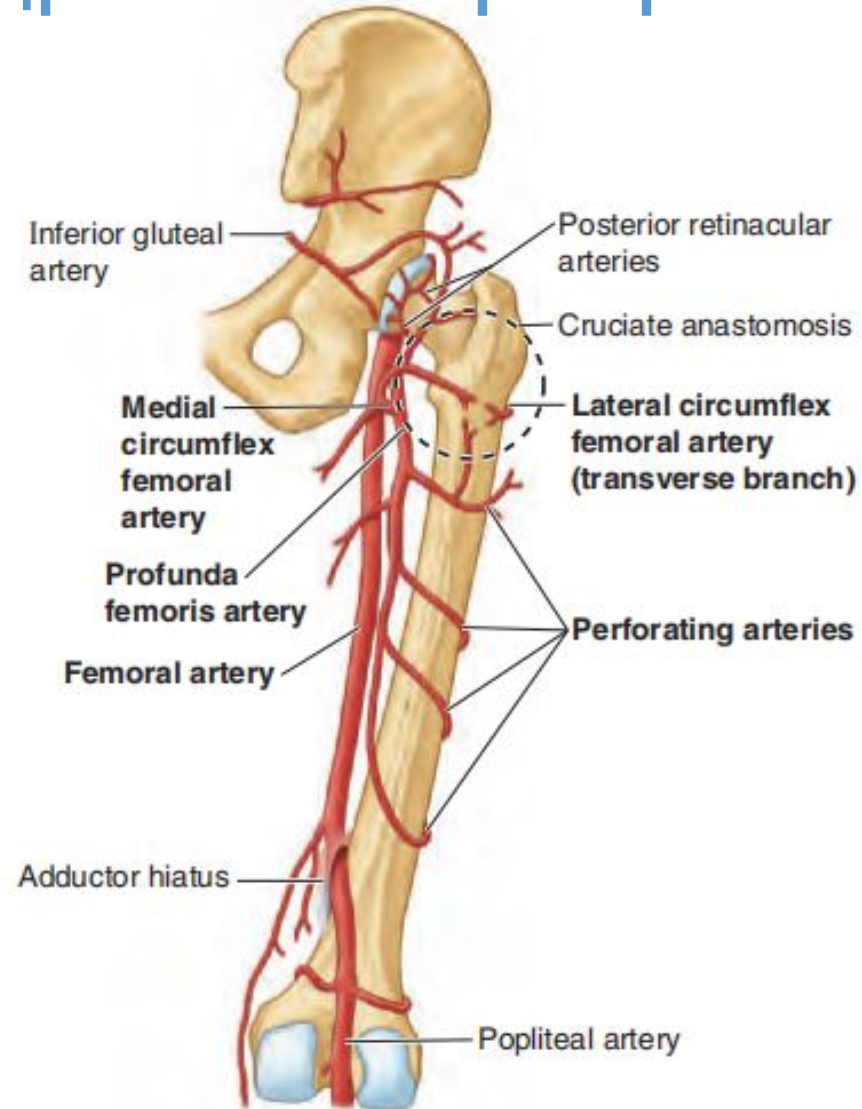




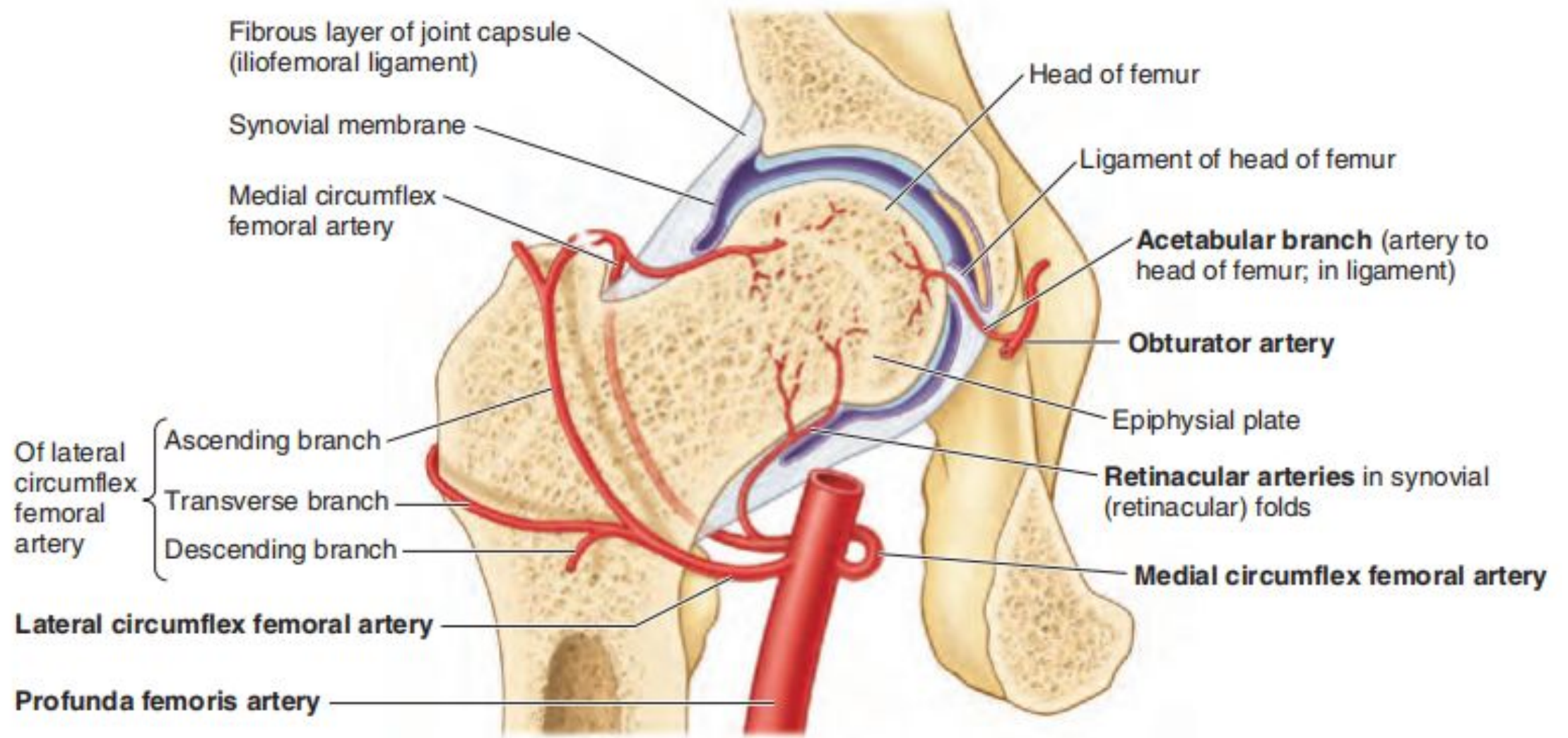
# Бедренная артерия



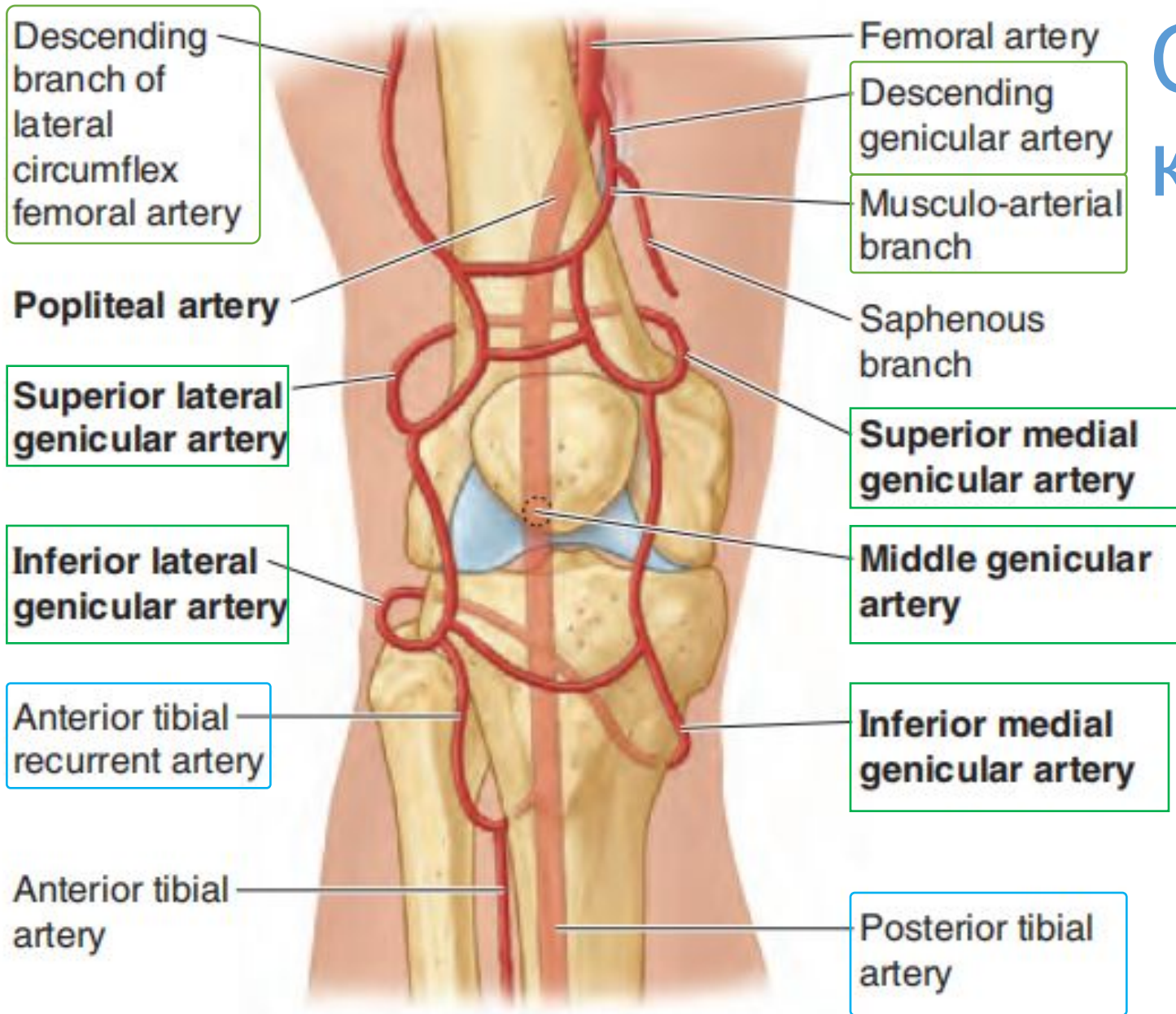
(A) Anterior view



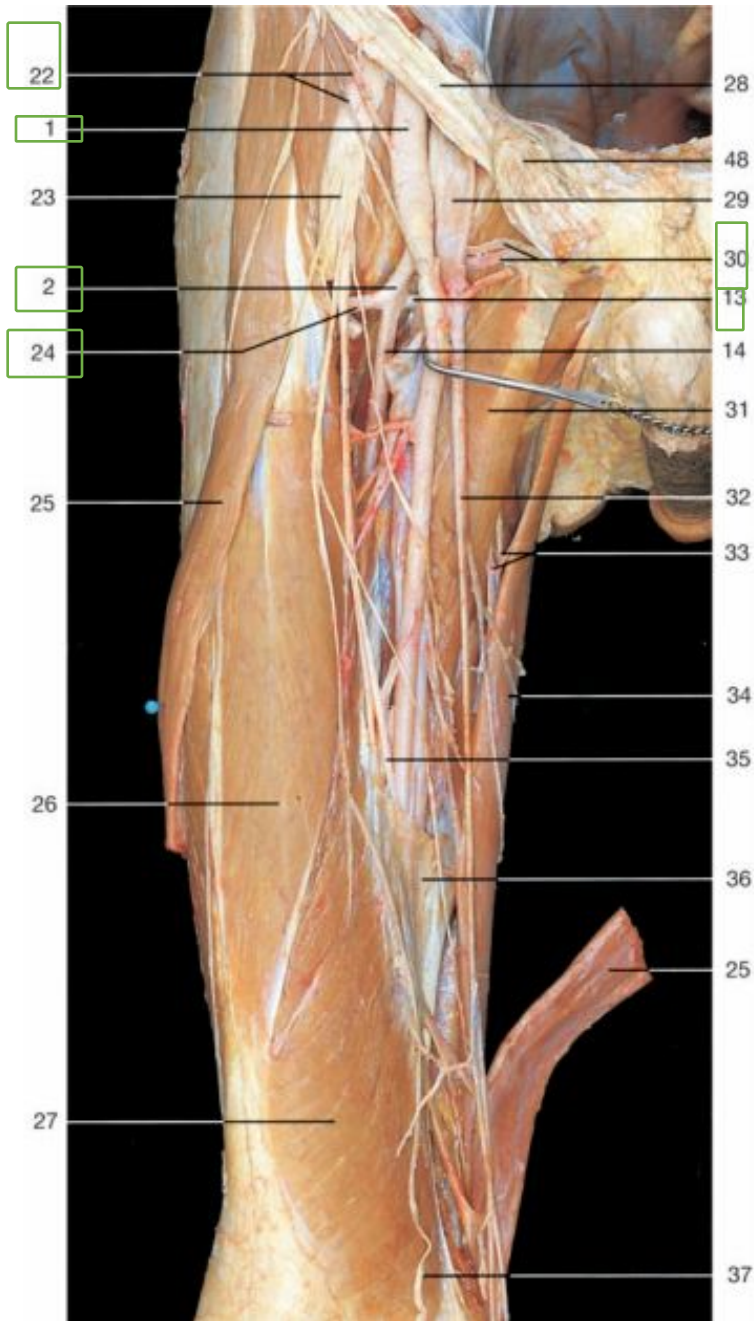
(B) Posterior view



# Суставная сеть колена

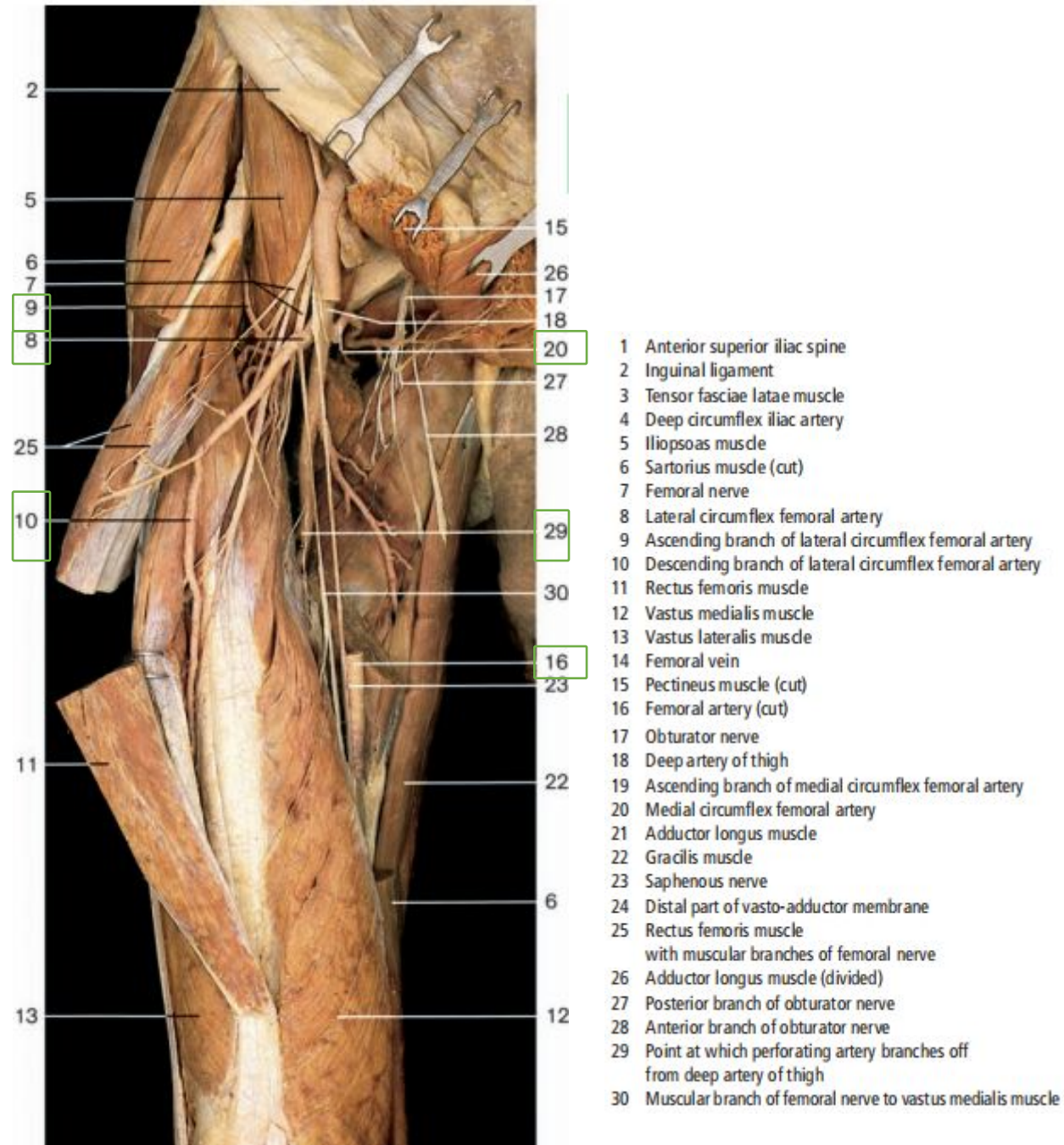


# Бедренная артерия



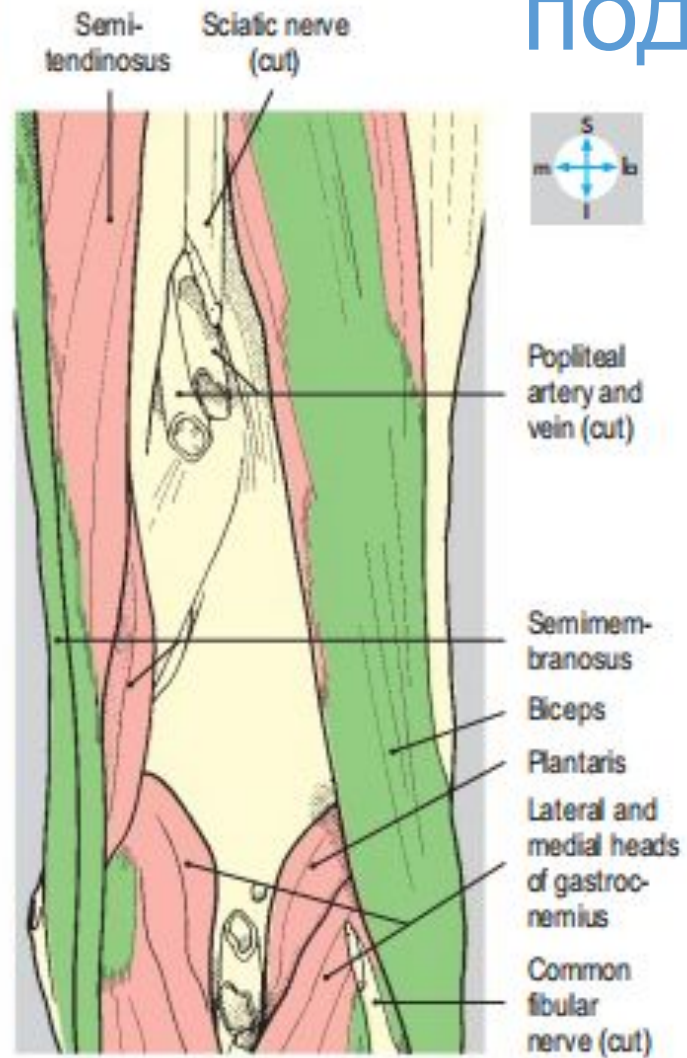
- 1 Femoral artery
- 2 Deep artery of thigh
- 3 Ascending branch of lateral circumflex femoral artery
- 4 Descending branch of lateral circumflex femoral artery
- 5 Lateral superior genicular artery
- 6 Popliteal artery
- 7 Lateral inferior genicular artery
- 8 Anterior tibial artery
- 9 Peroneal artery
- 10 Lateral plantar artery
- 11 Arcuate artery with dorsal metatarsal arteries
- 12 Plantar arch with plantar metatarsal arteries
- 13 Medial circumflex femoral artery
- 14 Deep artery of thigh with perforating arteries
- 15 Descending genicular artery
- 16 Medial superior genicular artery
- 17 Middle genicular artery
- 18 Medial inferior genicular artery
- 19 Posterior tibial artery
- 20 Dorsalis pedis artery
- 21 Medial plantar artery
- 22 Superficial and deep circumflex iliac arteries
- 23 Femoral nerve
- 24 Lateral circumflex femoral artery
- 25 Sartorius muscle (cut and reflected)
- 26 Rectus femoris muscle
- 27 Vastus medialis muscle
- 28 Inguinal ligament
- 29 Femoral vein (cut)
- 30 External pudendal artery and vein
- 31 Adductor longus muscle

# Глубокая бедренная артерия



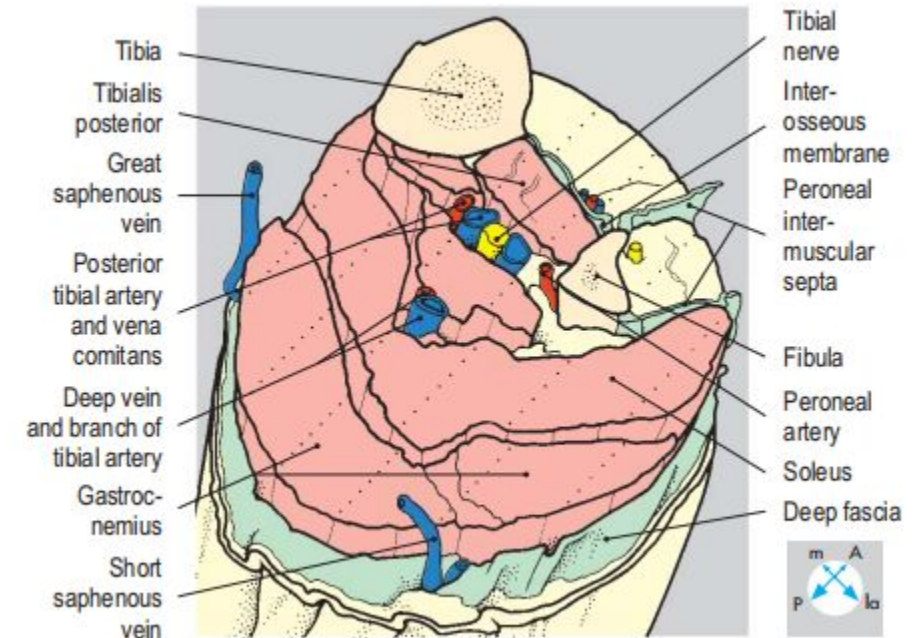
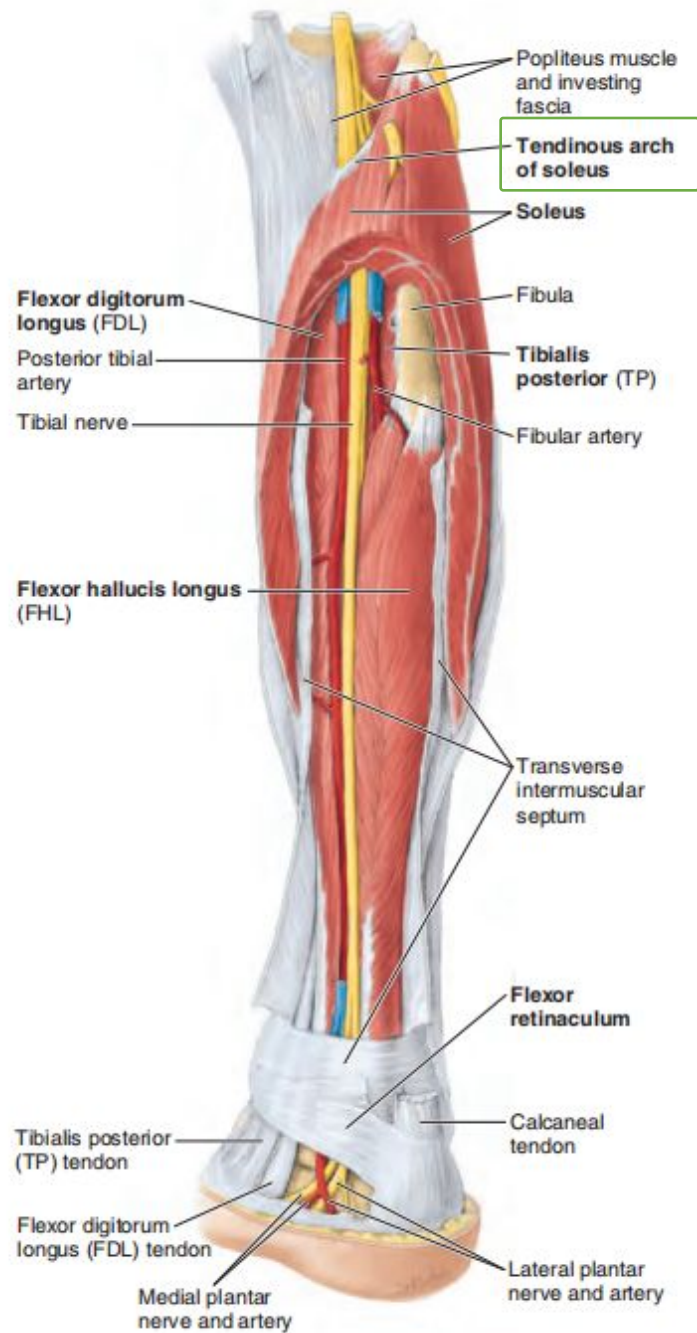
ГОЛЕНЬ

# Вспоминаем подколенную ямку

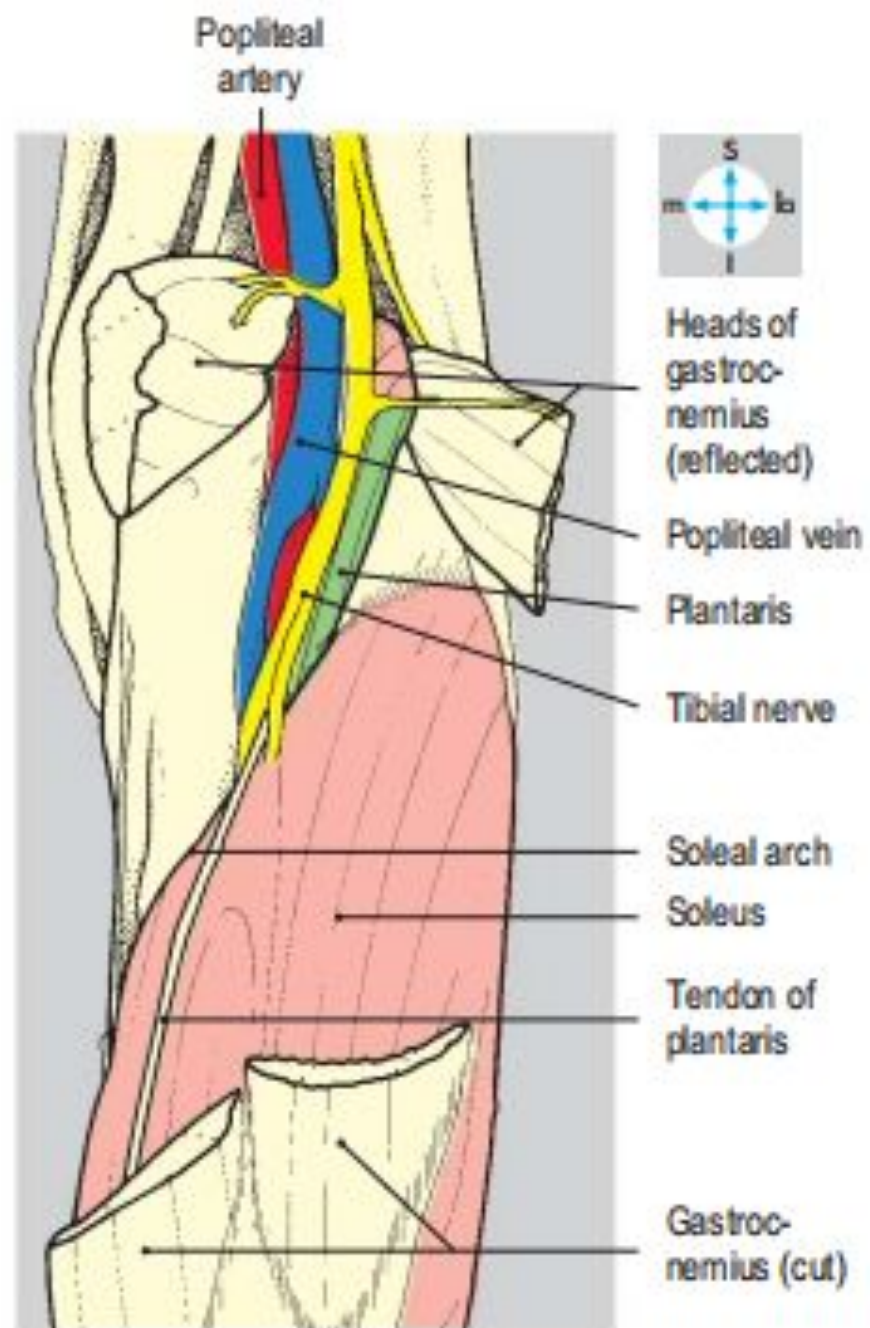


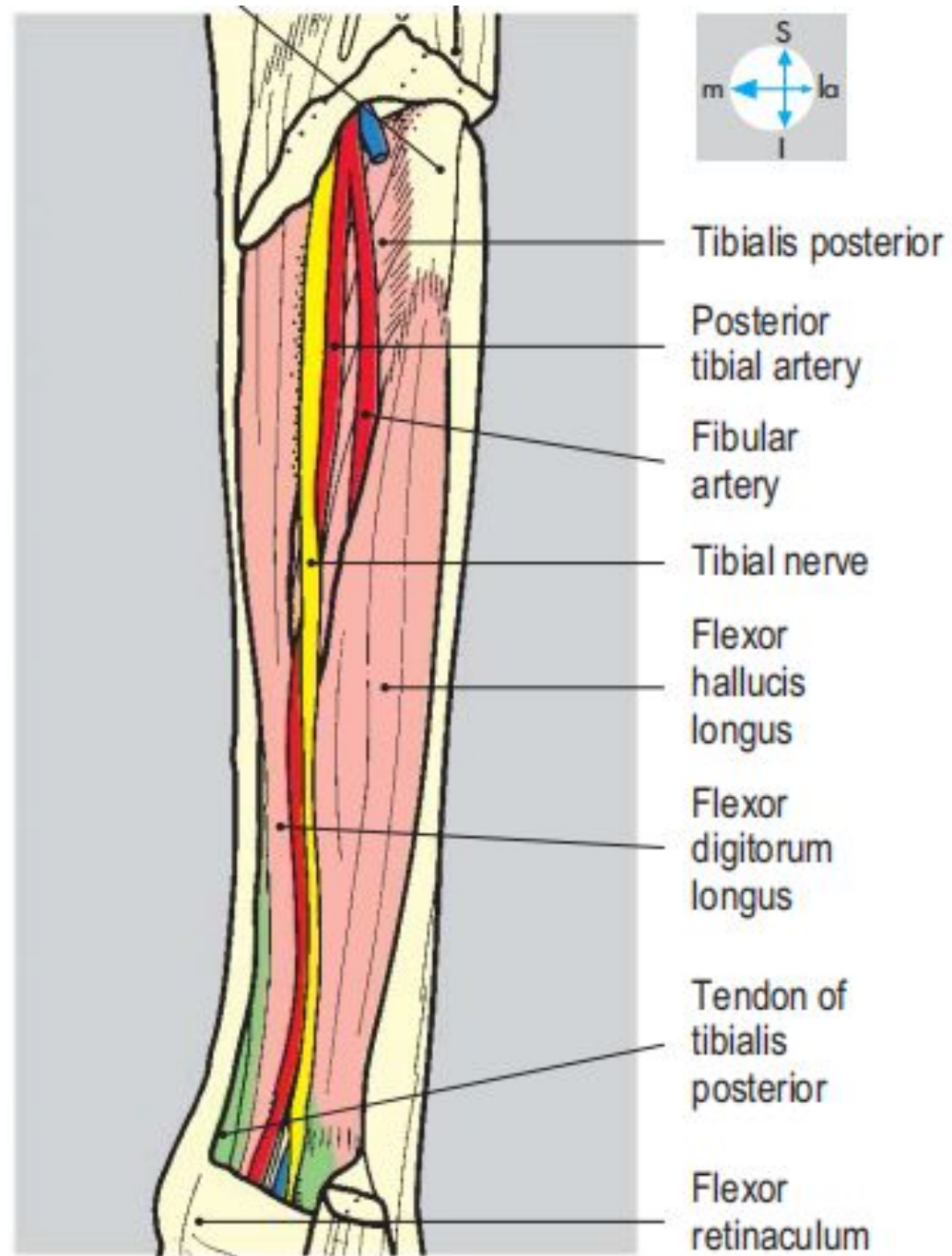
**Fig. 6.38** Muscles forming the walls of the popliteal fossa.

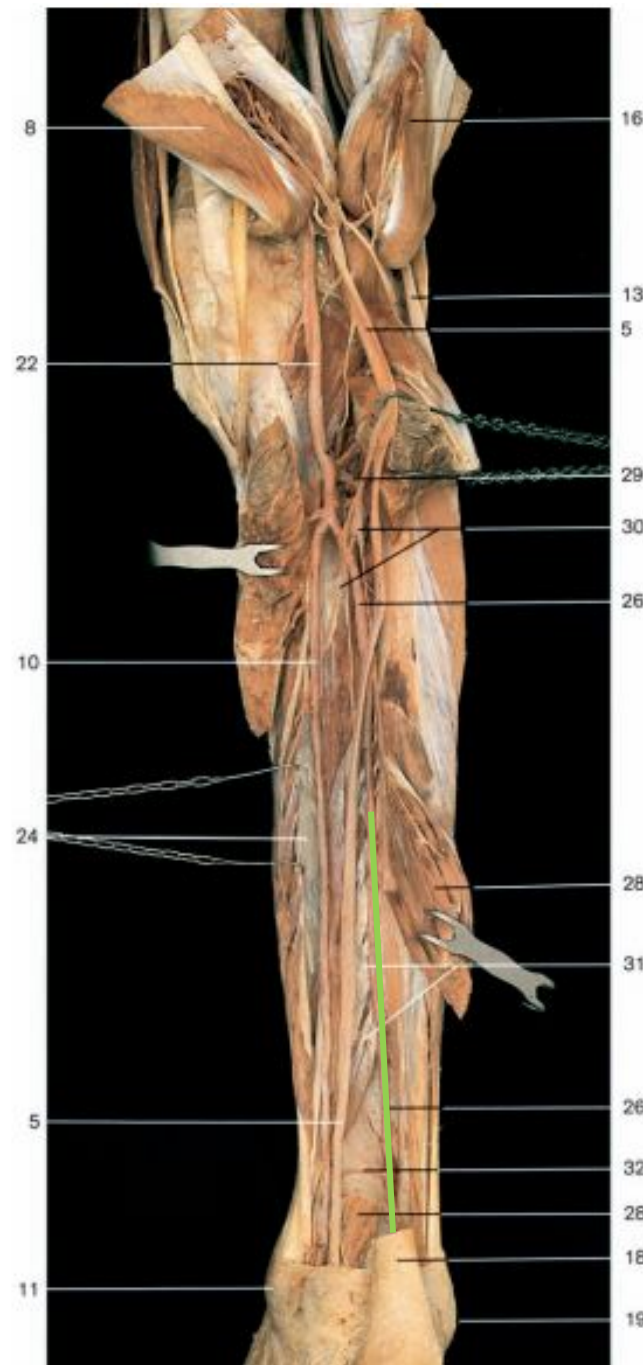
# Вспоминаем голено-подколенный канал (Грубера)





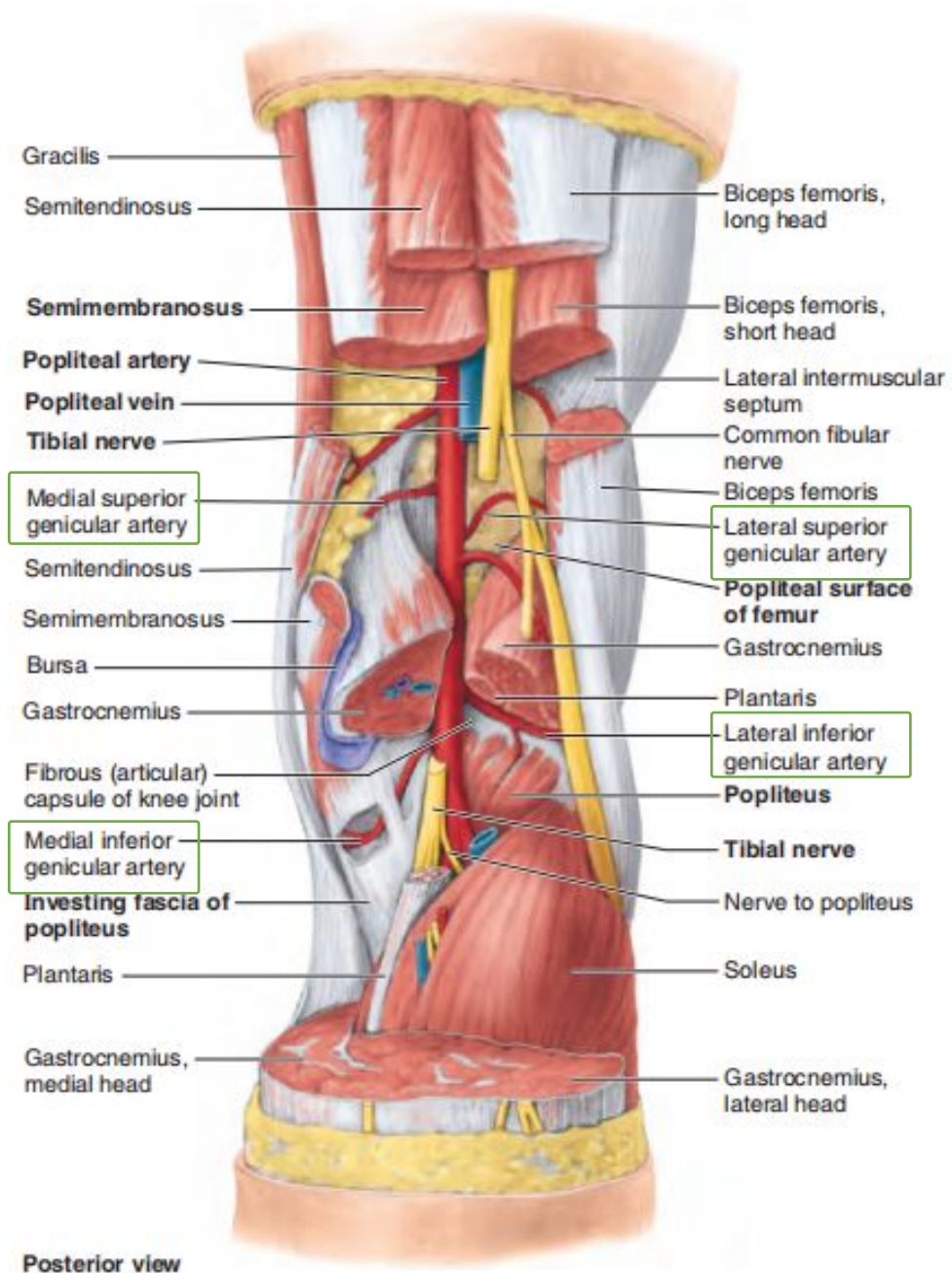




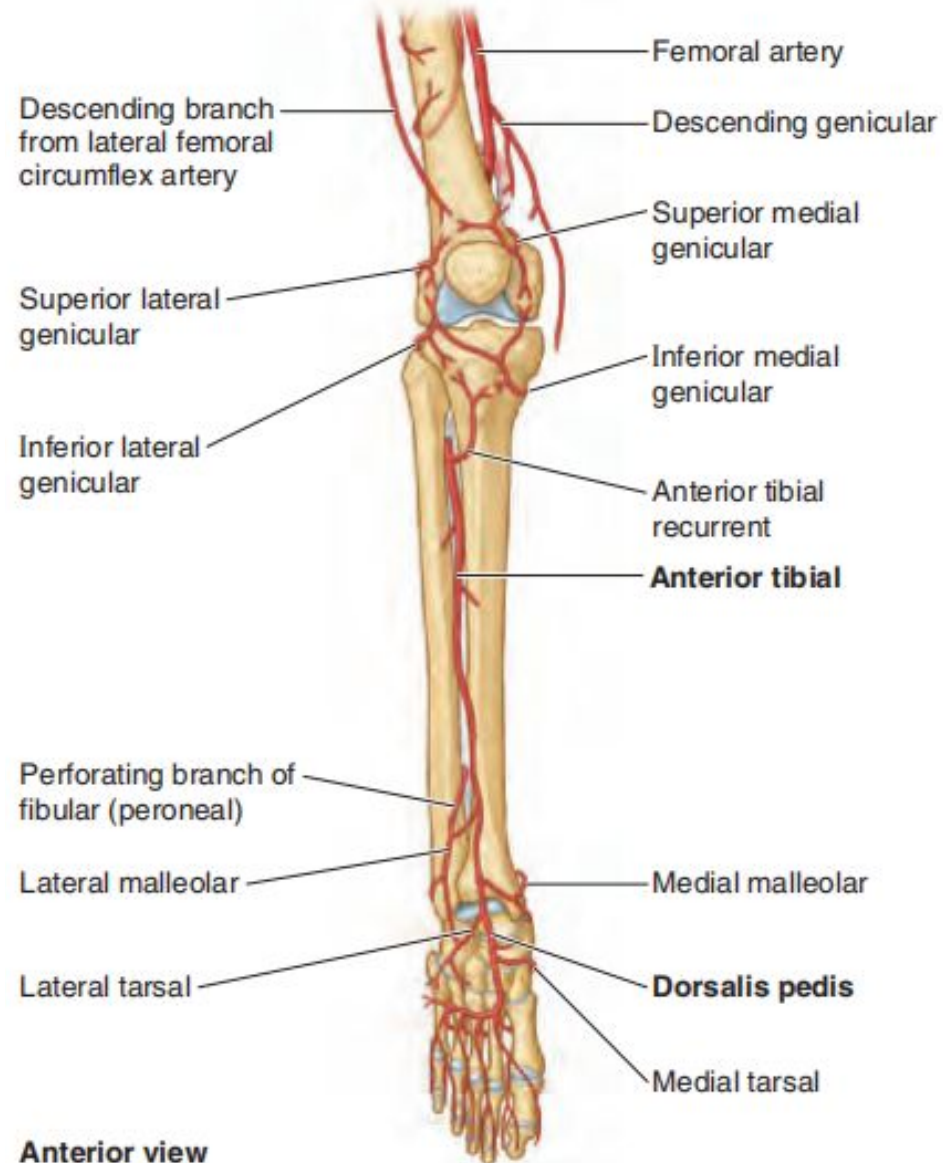
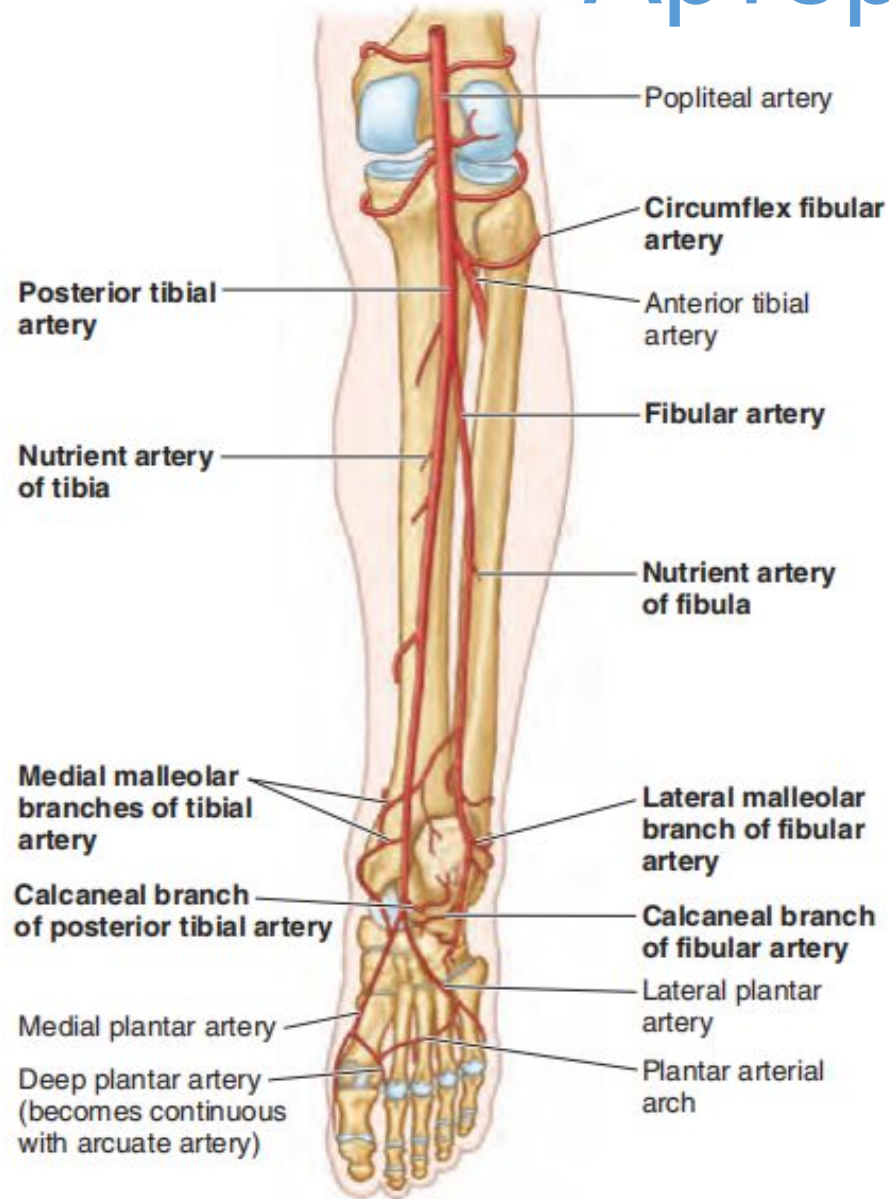


Вспоминаем  
нижний  
мышечно-  
малоберцовы  
й канал

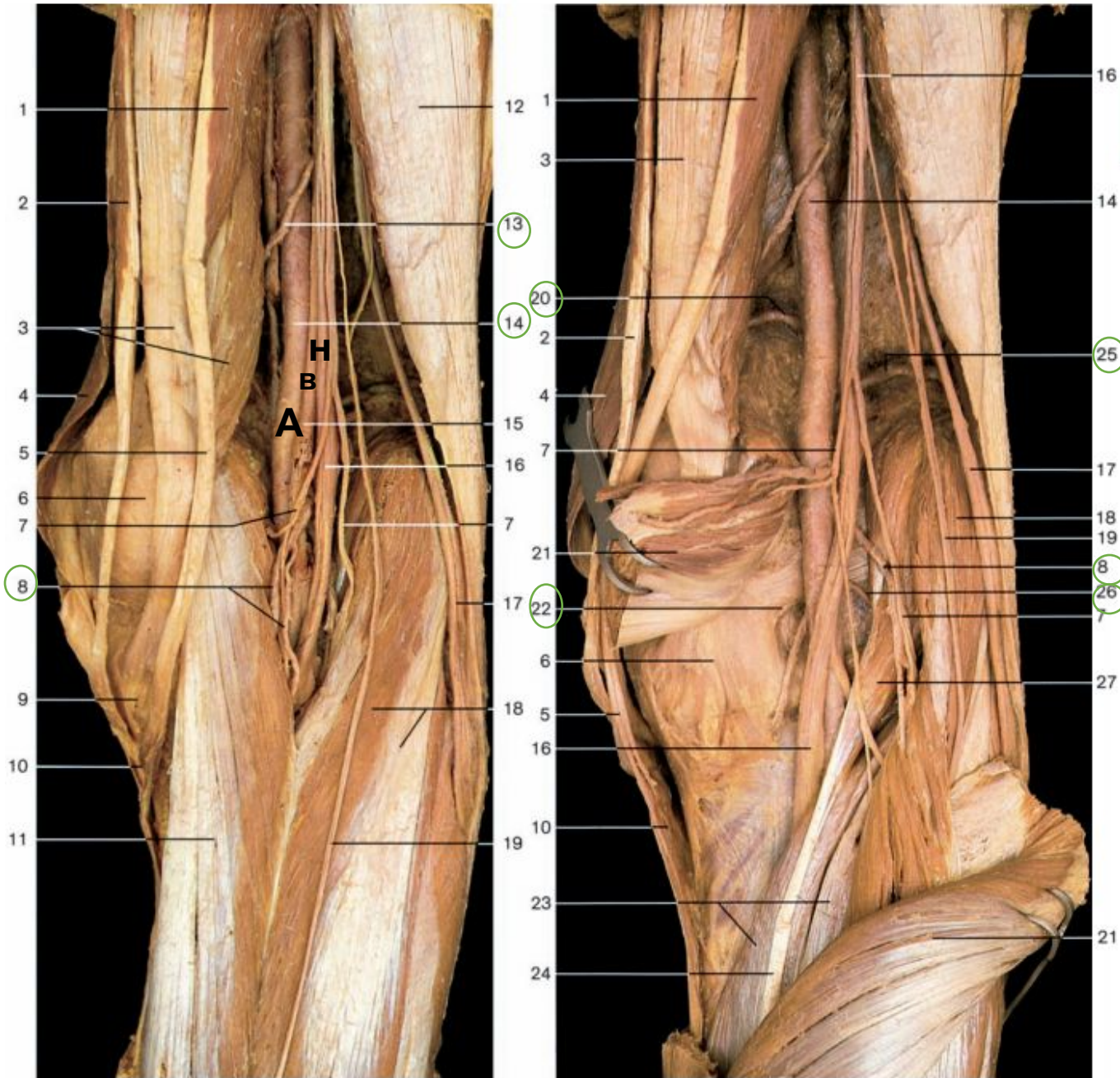
# Подколенная артерия



# Артерии голени

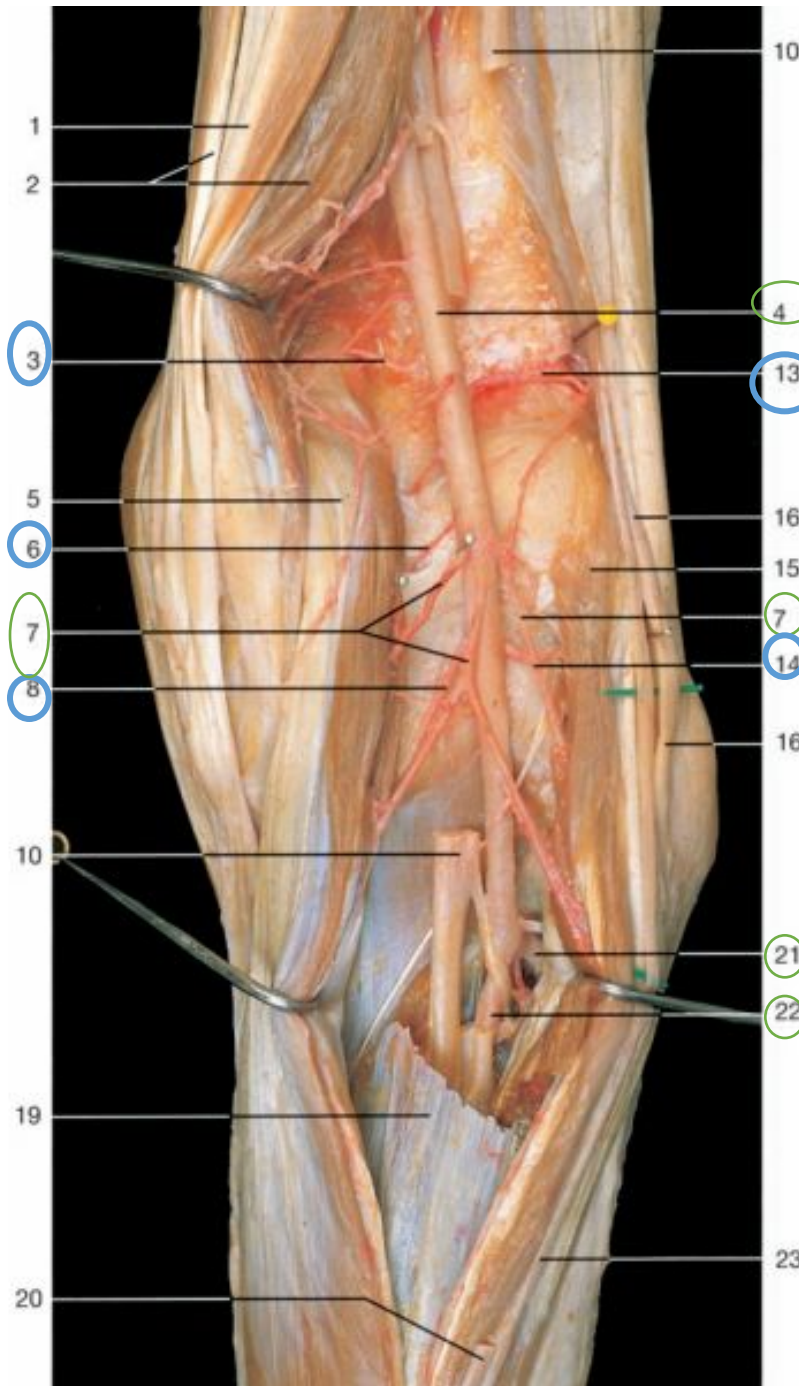
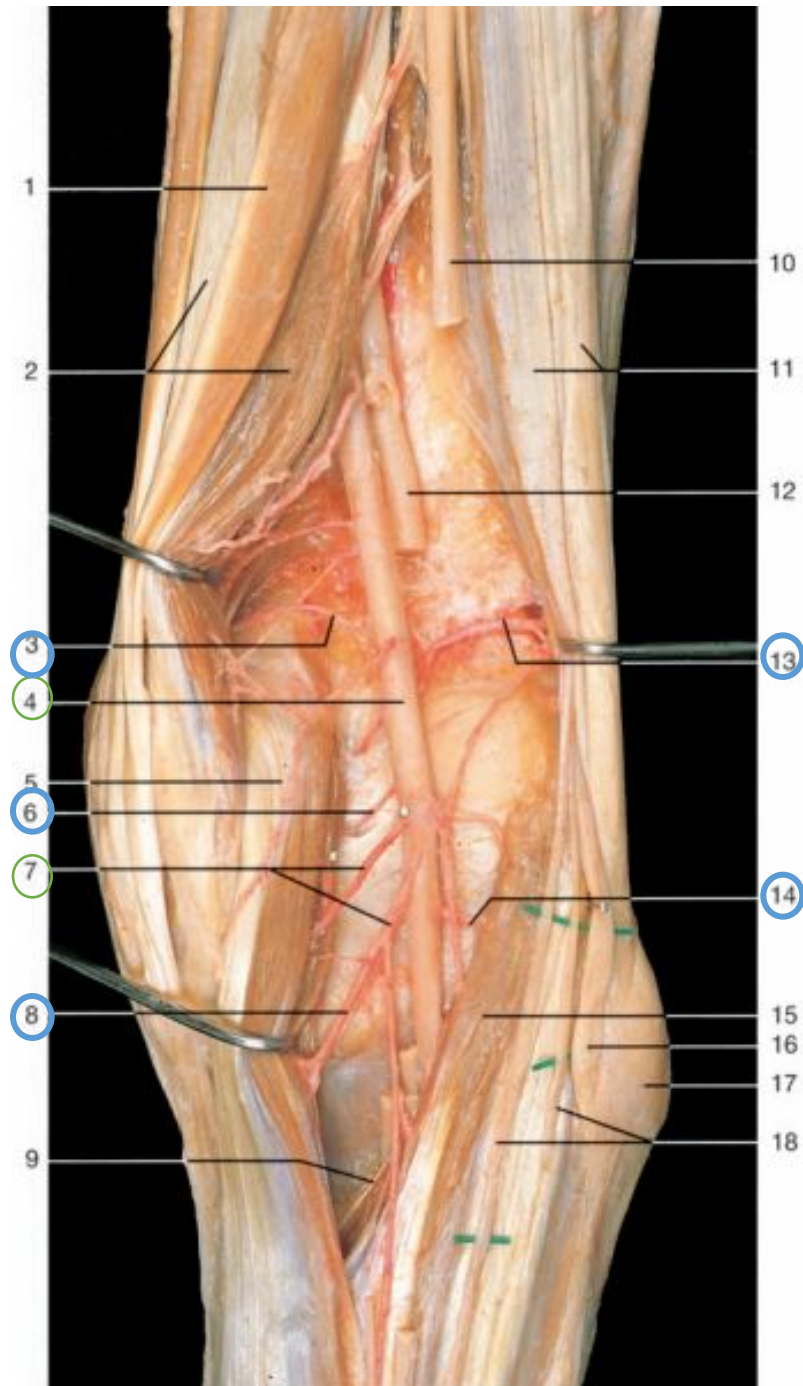


# Подколенная артерия



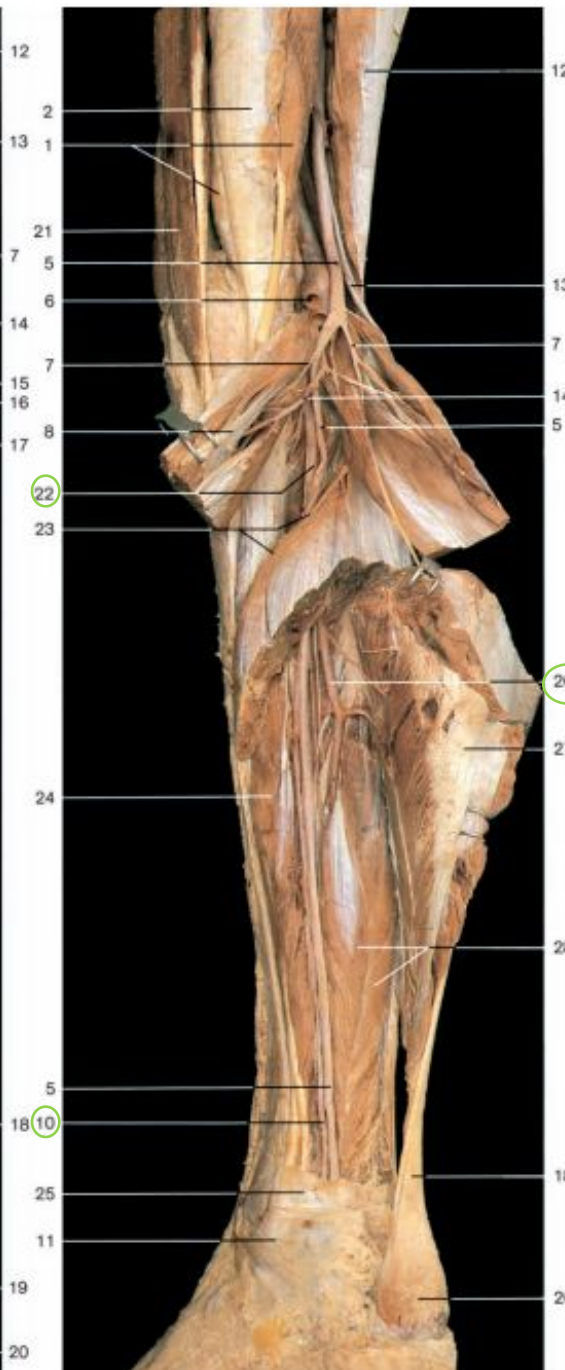
- 1 Semitendinosus muscle
- 2 Gracilis muscle
- 3 Semimembranosus muscle
- 4 Sartorius muscle
- 5 Tendon of semitendinosus muscle
- 6 Position of medial condyle of femur
- 7 Muscular branches of tibial nerve
- 8 Sural arteries and veins
- 9 Tendon of semimembranosus muscle
- 10 Common tendon of gracilis, semitendinosus, and sartorius muscles (pes anserinus)
- 11 Medial head of gastrocnemius muscle
- 12 Biceps femoris muscle
- 13 Muscular branch of popliteal artery
- 14 Popliteal artery
- 15 Popliteal vein
- 16 Tibial nerve
- 17 Common fibular nerve
- 18 Lateral head of gastrocnemius muscle
- 19 Medial sural cutaneous nerve
- 20 Medial superior genicular artery
- 21 Medial head of gastrocnemius muscle (cut and reflected)
- 22 Medial inferior genicular artery
- 23 Soleus muscle
- 24 Tendon of plantaris muscle
- 25 Lateral superior genicular artery
- 26 Lateral inferior genicular artery
- 27 Plantaris muscle

# Подколенная артерия



- 1 Semitendinosus muscle
- 2 Semimembranosus muscle
- 3 Medial superior genicular artery
- 4 Popliteal artery
- 5 Medial head of gastrocnemius muscle
- 6 Middle genicular artery
- 7 Muscular branches of popliteal artery
- 8 Medial inferior genicular artery
- 9 Tendon of plantaris muscle
- 10 Tibial nerve (cut)
- 11 Biceps femoris muscle
- 12 Popliteal vein (cut)
- 13 Lateral superior genicular artery
- 14 Lateral inferior genicular artery
- 15 Lateral head of gastrocnemius muscle
- 16 Common fibular nerve
- 17 Head of fibula
- 18 Lateral sural cutaneous nerves
- 19 Soleus muscle
- 20 Medial sural cutaneous nerve
- 21 Anterior tibial artery
- 22 Posterior tibial artery
- 23 Lateral sural cutaneous nerve

# Артерии голени



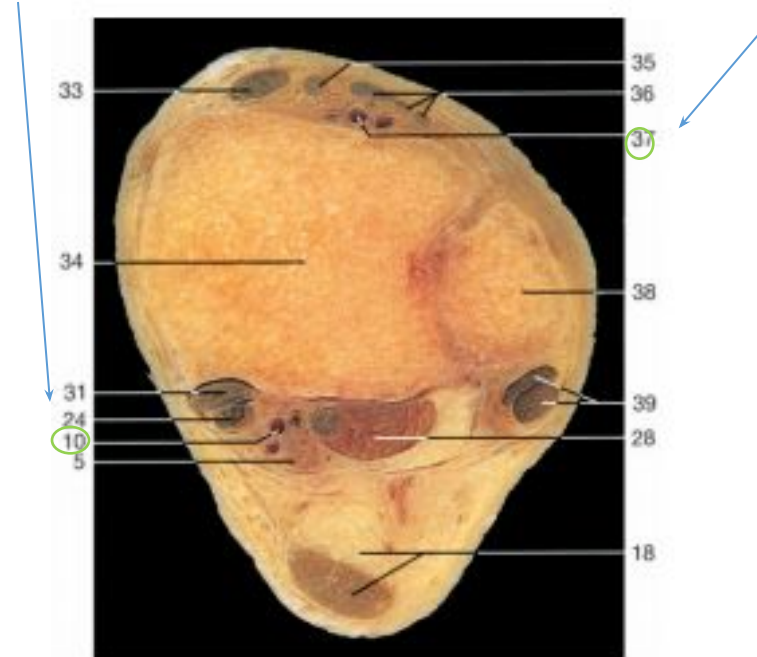
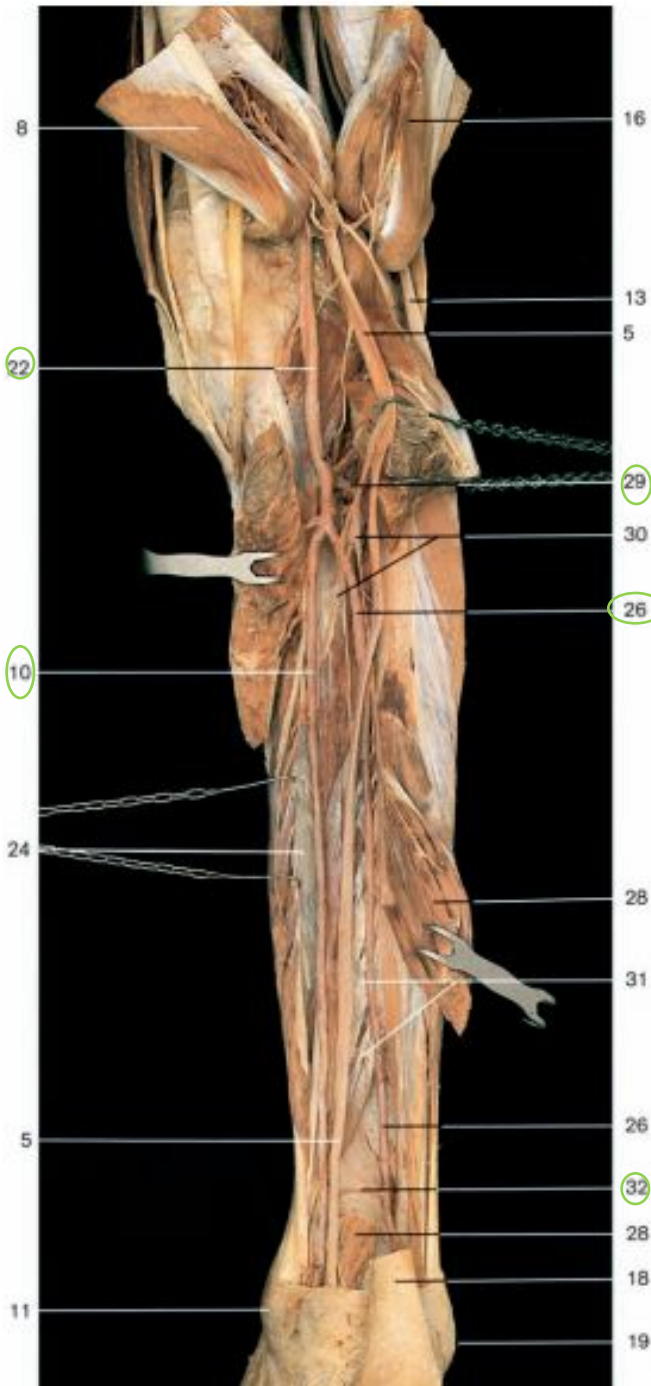
- 1 Semimembranosus muscle
- 2 Semitendinosus muscle
- 3 Popliteal vein
- 4 Popliteal artery
- 5 Tibial nerve
- 6 Small saphenous vein (cut)
- 7 Muscular branch of tibial nerve
- 8 Medial head of gastrocnemius muscle
- 9 Tendon of plantaris muscle
- 10 Posterior tibial artery
- 11 Medial malleolus
- 12 Biceps femoris muscle
- 13 Common fibular nerve
- 14 Sural arteries
- 15 Plantaris muscle
- 16 Lateral head of gastrocnemius muscle
- 17 Soleus muscle
- 18 Calcaneal or Achilles tendon
- 19 Lateral malleolus
- 20 Calcaneal tuberosity
- 21 Sartorius muscle
- 22 Popliteal artery
- 23 Tendinous arch of soleus muscle
- 24 Flexor digitorum longus muscle
- 25 Flexor retinaculum
- 26 Peroneal artery
- 27 Triceps surae muscle (cut)
- 28 Flexor hallucis longus muscle
- 29 Anterior tibial artery
- 30 Muscular branches of tibial nerve
- 31 Tibialis posterior muscle
- 32 Communicating branch of peroneal artery
- 33 Tendon of tibialis anterior muscle
- 34 Tibia
- 35 Tendon of extensor hallucis longus muscle
- 36 Tendons of extensor digitorum longus muscle
- 37 Anterior tibial artery
- 38 Fibula
- 39 Tendons of peroneus longus and brevis muscles



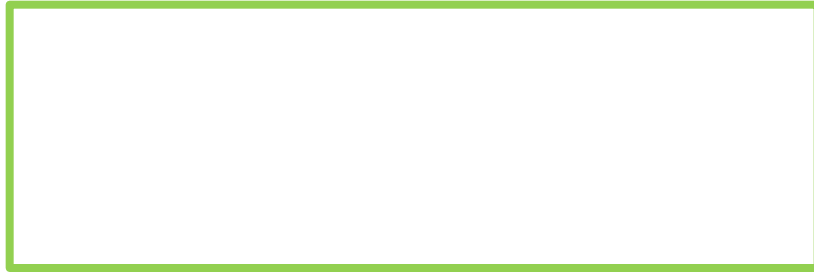
# Артерии голени

Артерия проходит через 4 фиброзный канал под удерживателем мышц-сгибателей

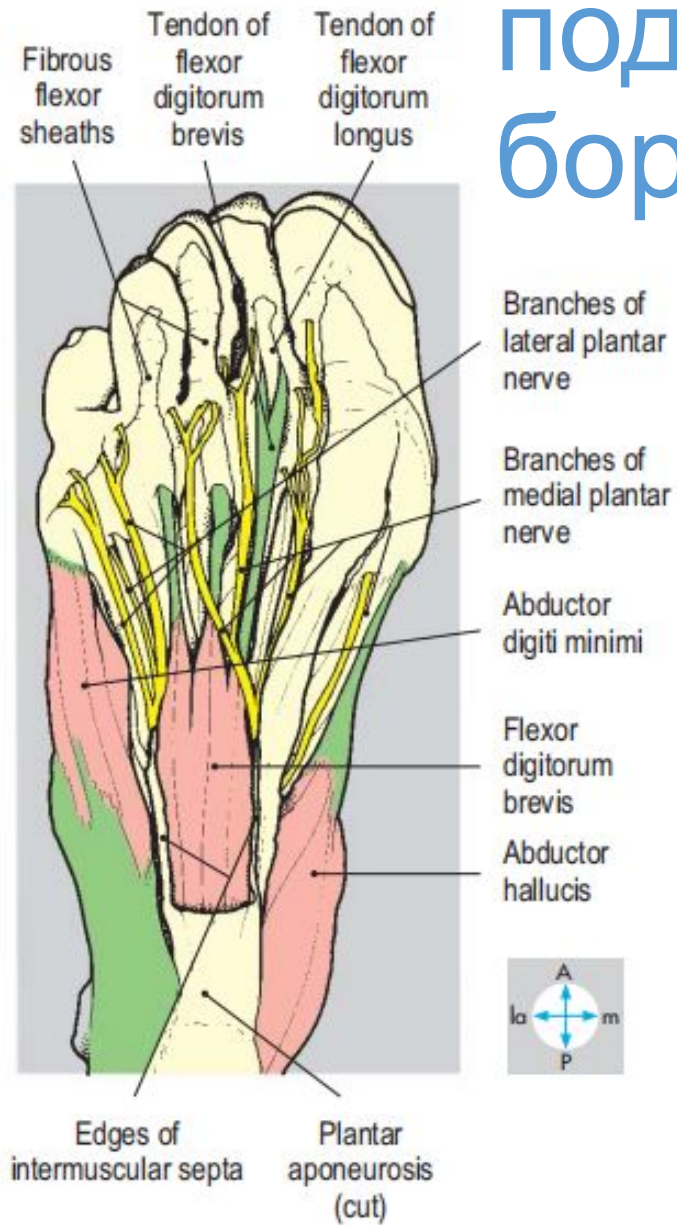
Артерия проходит через 4 фиброзный канал под **нижним удерживателем** мышц-разгибателей



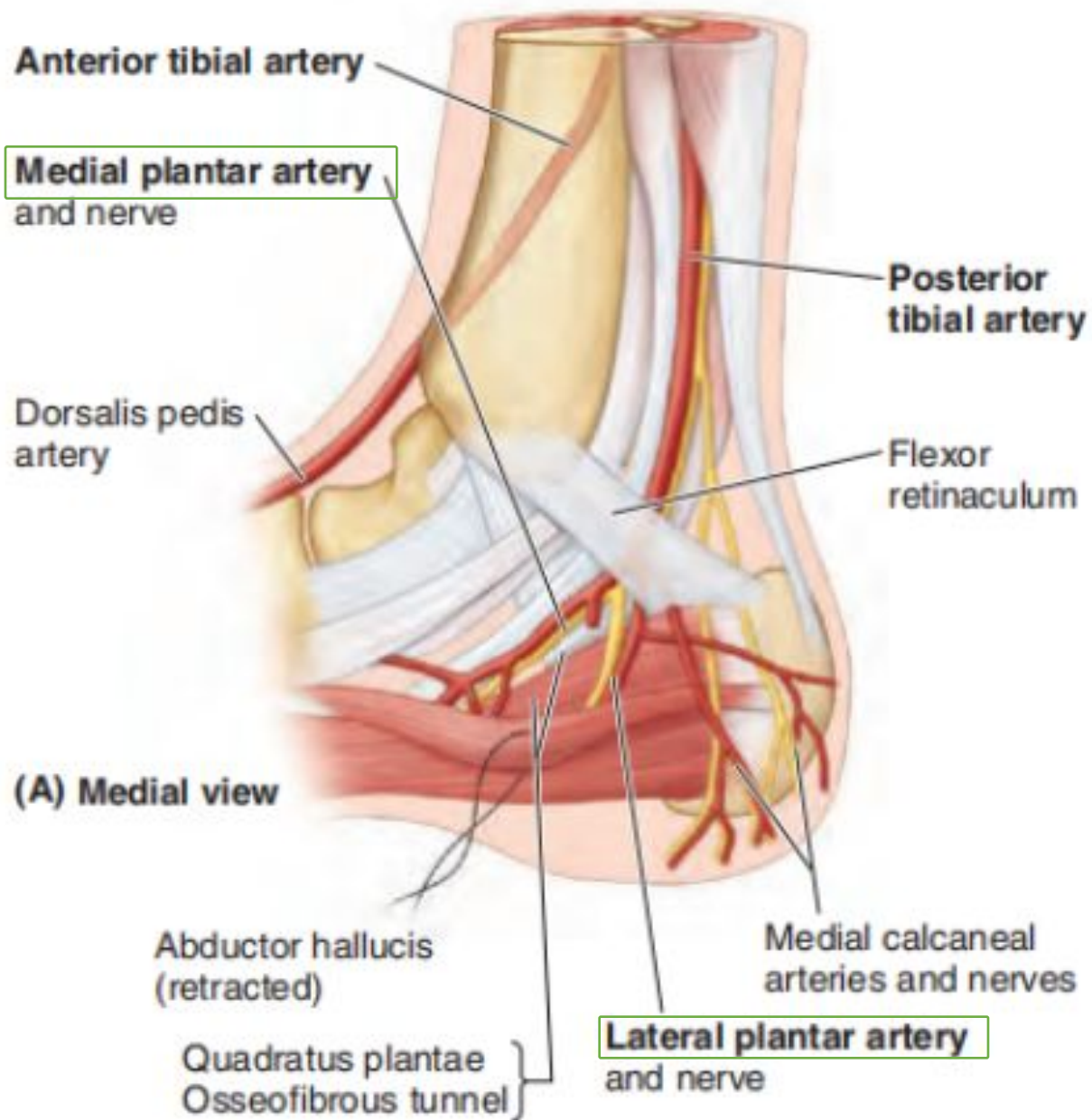
- 1 Semimembranosus muscle
- 2 Semitendinosus muscle
- 3 Popliteal vein
- 4 Popliteal artery
- 5 Tibial nerve
- 6 Small saphenous vein (cut)
- 7 Muscular branch of tibial nerve
- 8 Medial head of gastrocnemius muscle
- 9 Tendon of plantaris muscle
- 10 Posterior tibial artery
- 11 Medial malleolus
- 12 Biceps femoris muscle
- 13 Common fibular nerve
- 14 Sural arteries
- 15 Plantaris muscle
- 16 Lateral head of gastrocnemius muscle
- 17 Soleus muscle
- 18 Calcaneal or Achilles tendon
- 19 Lateral malleolus
- 20 Calcaneal tuberosity
- 21 Sartorius muscle
- 22 Popliteal artery
- 23 Tendinous arch of soleus muscle
- 24 Flexor digitorum longus muscle
- 25 Flexor retinaculum
- 26 Peroneal artery
- 27 Triceps surae muscle (cut)
- 28 Flexor hallucis longus muscle
- 29 Anterior tibial artery
- 30 Muscular branches of tibial nerve
- 31 Tibialis posterior muscle
- 32 Communicating branch of peroneal artery
- 33 Tendon of tibialis anterior muscle
- 34 Tibia
- 35 Tendon of extensor hallucis longus muscle
- 36 Tendons of extensor digitorum longus muscle
- 37 Anterior tibial artery
- 38 Fibula
- 39 Tendons of peroneus longus and brevis muscles



# Вспоминаем ПОДОШВЕННЫЕ борозды

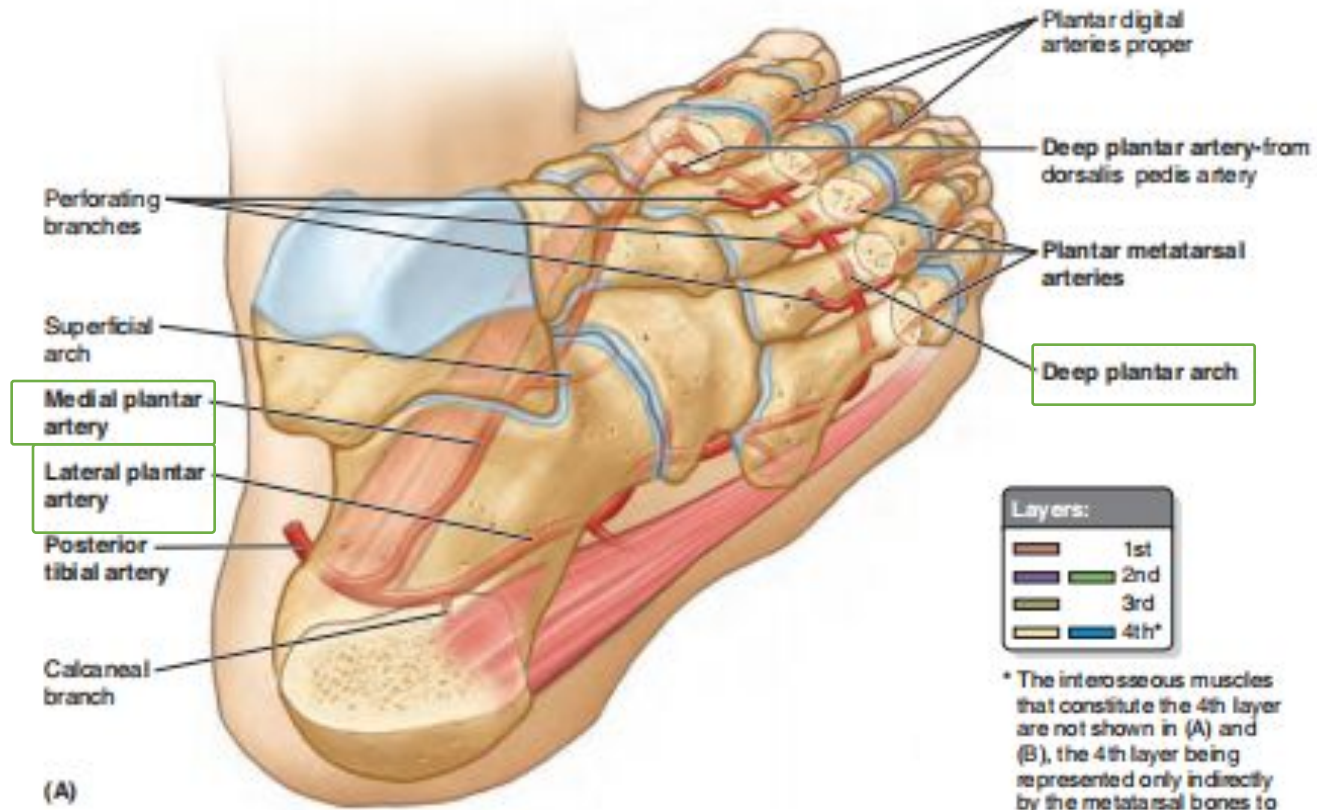


# Подопшвенны е артерии



# Подошвенная дуга

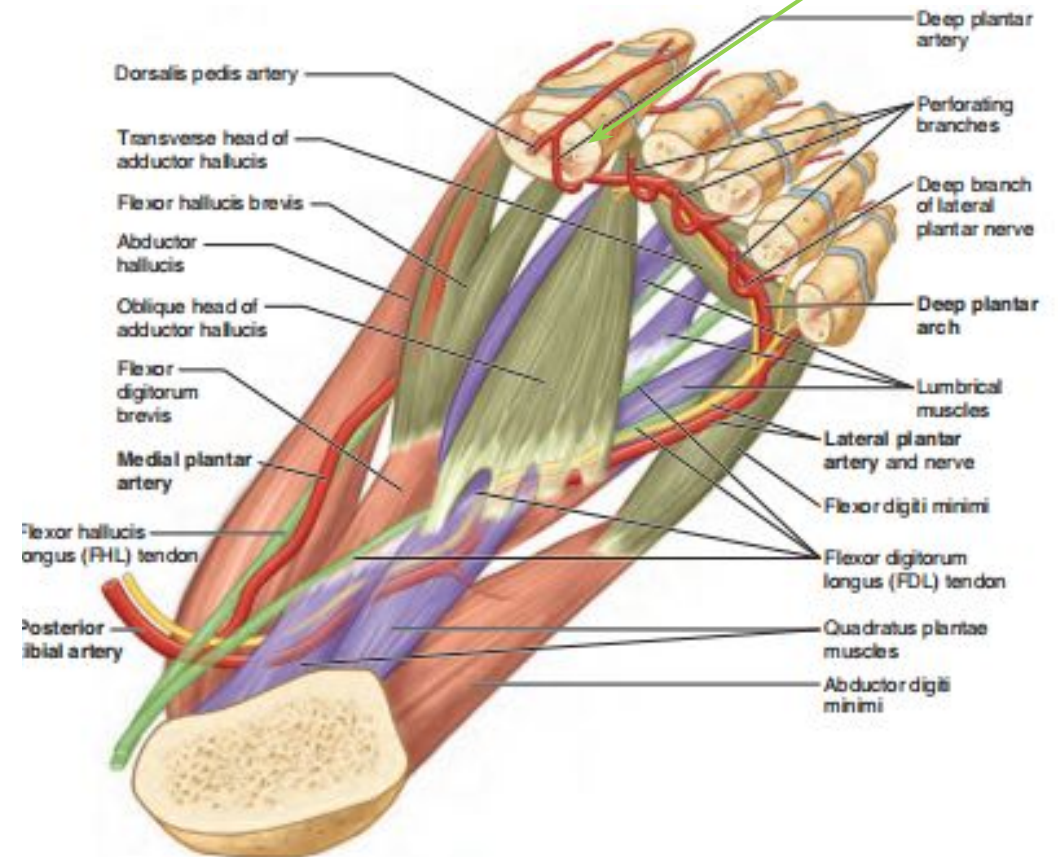
Вторая дуга - анастомоз между arcus plantaris и r. plantaris profundus



Layers:

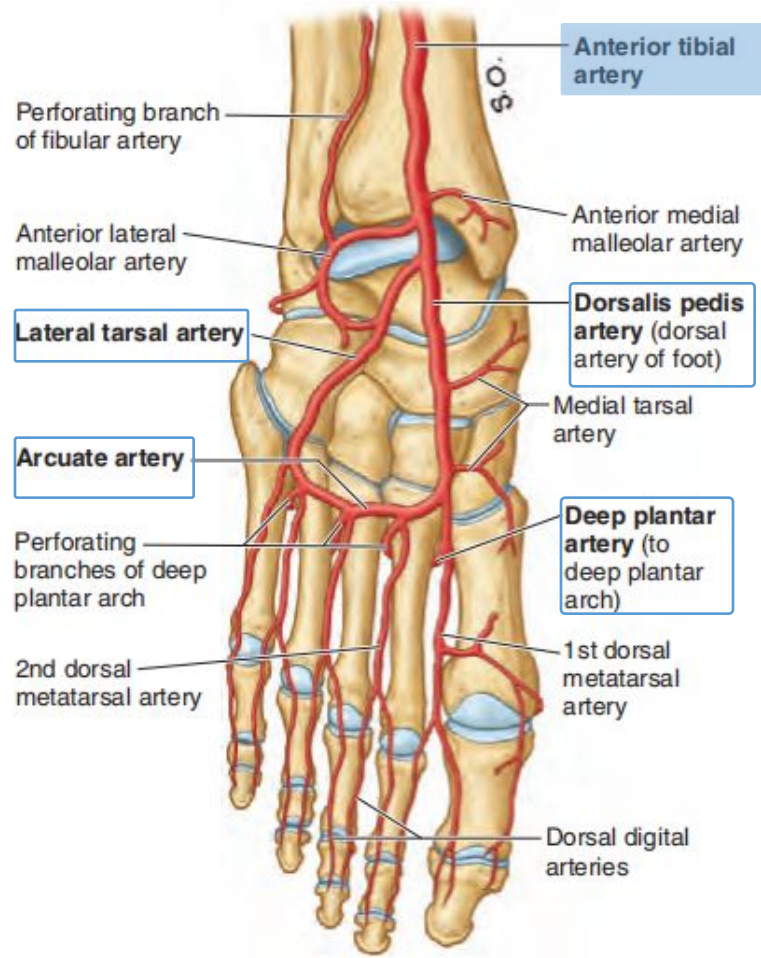
1st	2nd
3rd	4th*

\* The interosseous muscles that constitute the 4th layer are not shown in (A) and (B), the 4th layer being represented only indirectly by the metatarsal bones to which the interossei attach.

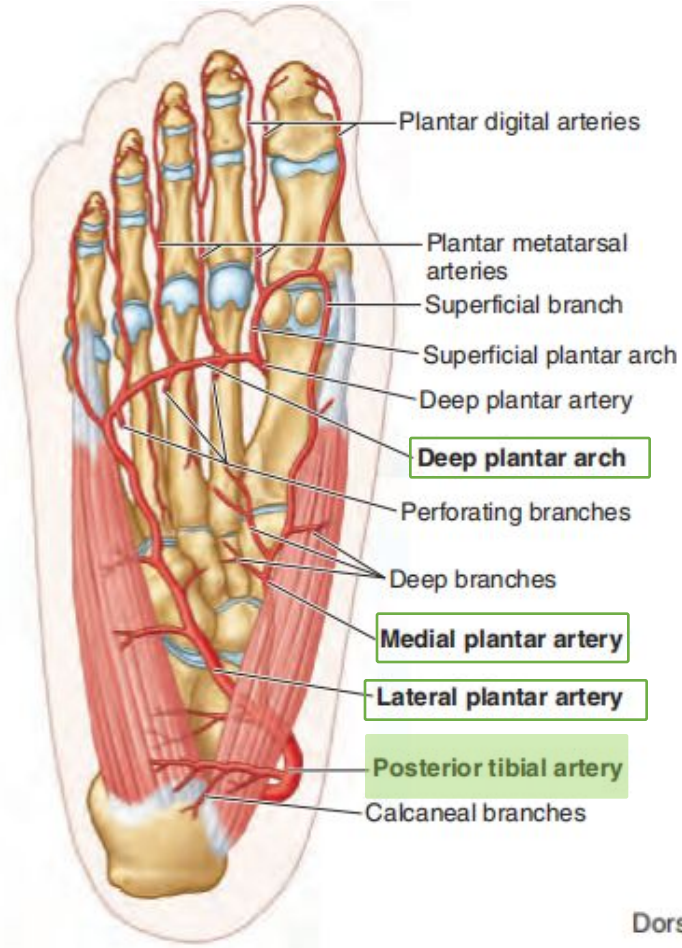


(B)

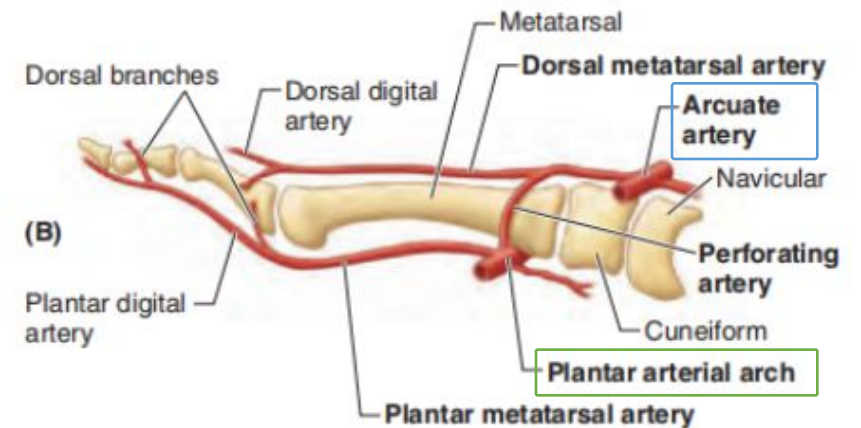
# Артерии стопы



(A) Dorsum of foot

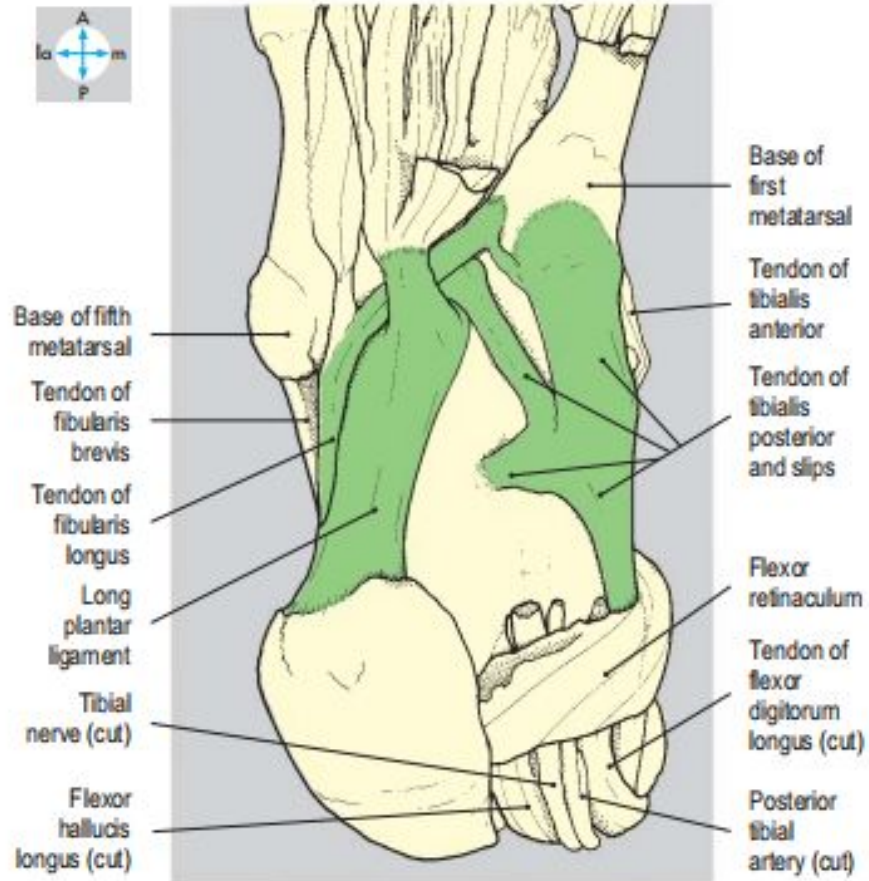


(B) Plantar aspect of foot

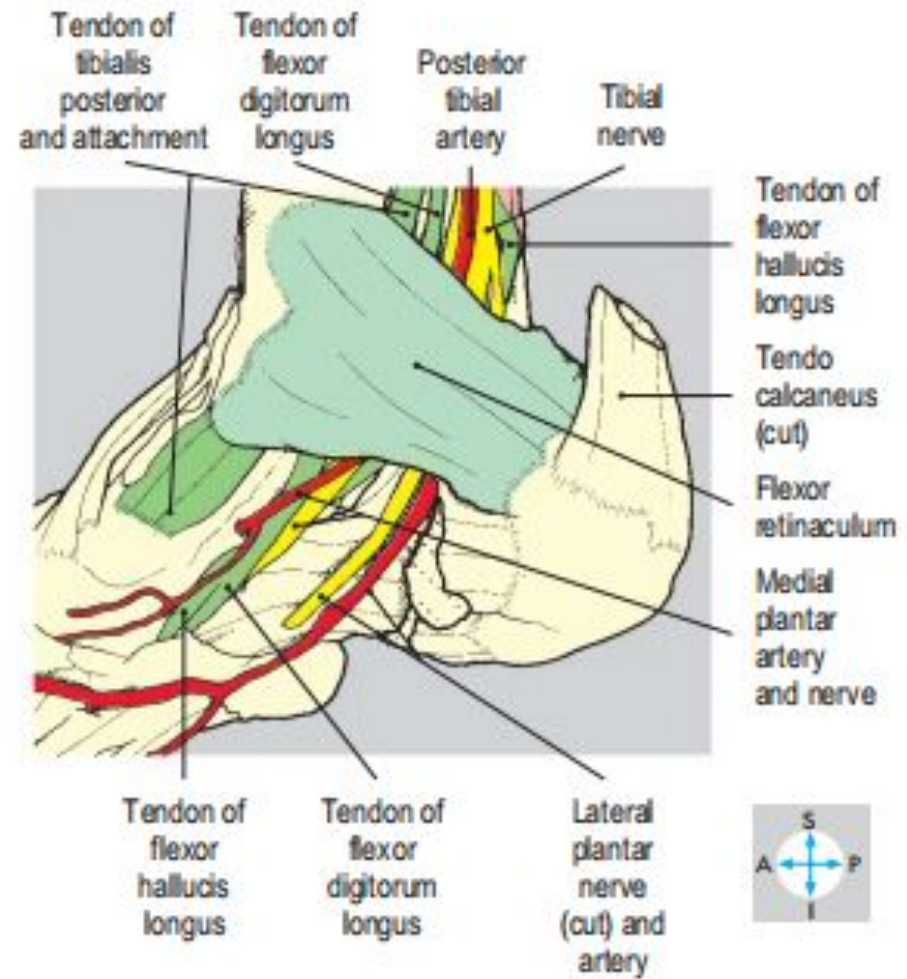


(B)

# Задняя большеберцовая артерия

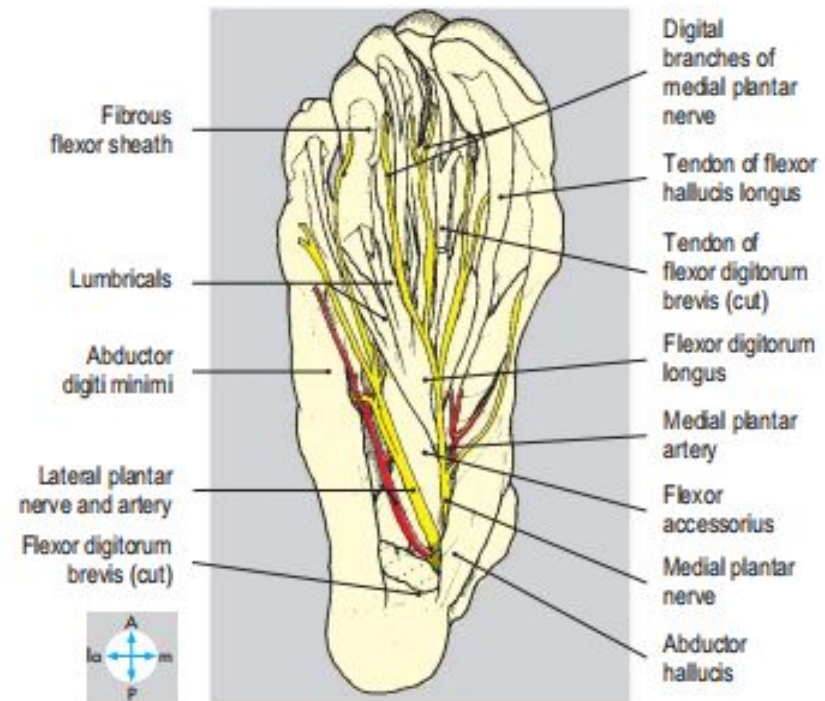
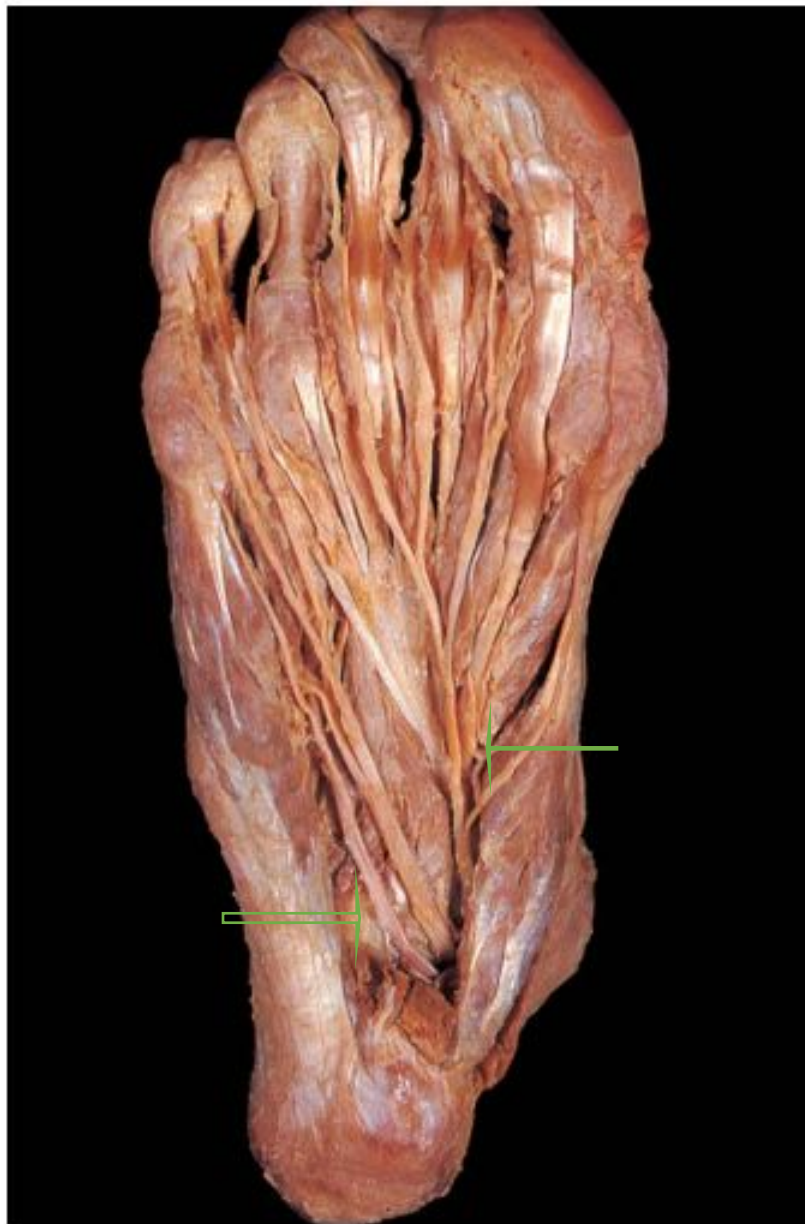


# Подошвенные артерии

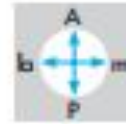




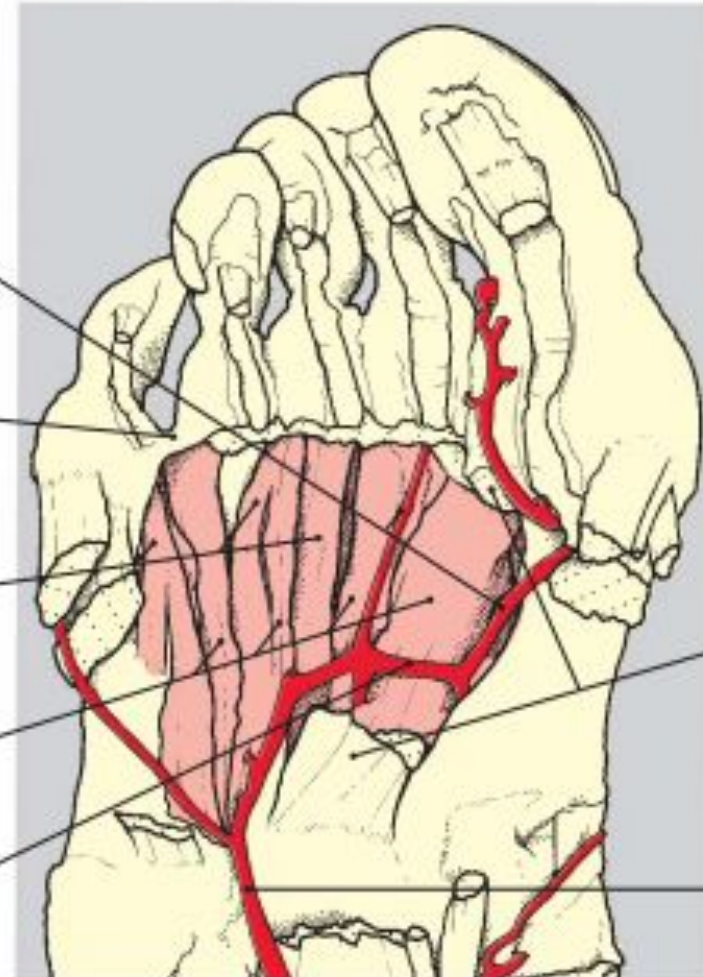
# Подошвенные артерии



# Пододшвенная дуга



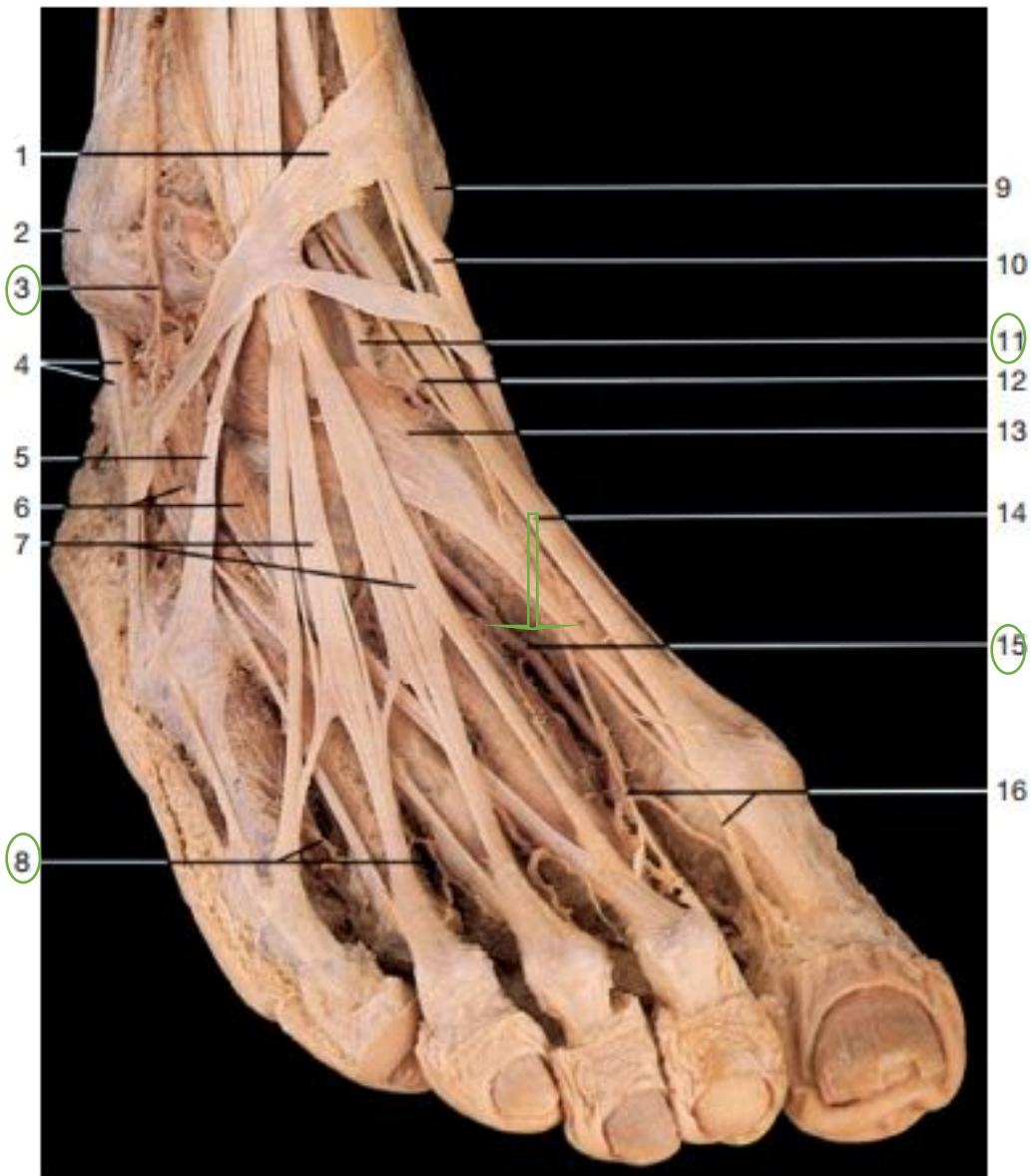
Plantar metatarsal arteries  
Deep transverse metatarsal ligament  
Plantar inter-  
osseous muscles  
Dorsal inter-  
osseous muscles  
Plantar arch



Adductor  
hallucis  
(cut)

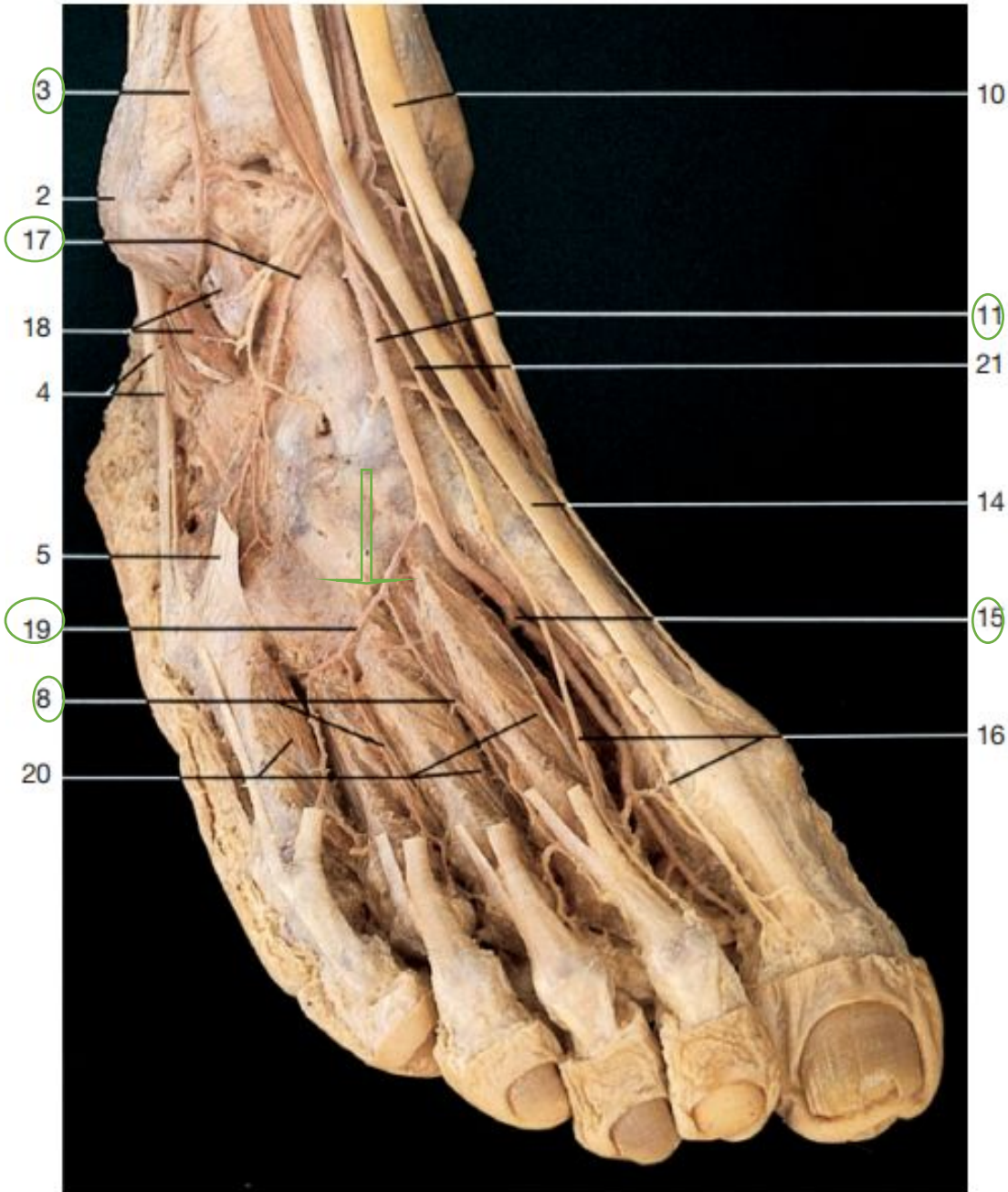
Lateral and  
medial  
plantar  
arteries

# Тыльная артерия СТОПЫ



- 1 Inferior extensor retinaculum
- 2 Lateral malleolus
- 3 Lateral anterior malleolar artery
- 4 Tendons of peroneal muscles
- 5 Tendon of peroneus tertius muscle
- 6 Extensor digitorum brevis muscle
- 7 Tendons of extensor digitorum longus muscle
- 8 Dorsal metatarsal arteries
- 9 Medial malleolus
- 10 Tendon of tibialis anterior muscle
- 11 Dorsalis pedis artery
- 12 Deep fibular nerve (on dorsum of foot)
- 13 Extensor hallucis brevis muscle
- 14 Tendon of extensor hallucis longus muscle
- 15 Dorsalis pedis artery  
with deep plantar branch to the plantar arch
- 16 Terminal branches of deep fibular nerve
- 17 Lateral tarsal artery
- 18 Extensor digitorum brevis muscle (divided)
- 19 Arcuate artery
- 20 Dorsal interossei muscles
- 21 Deep fibular nerve

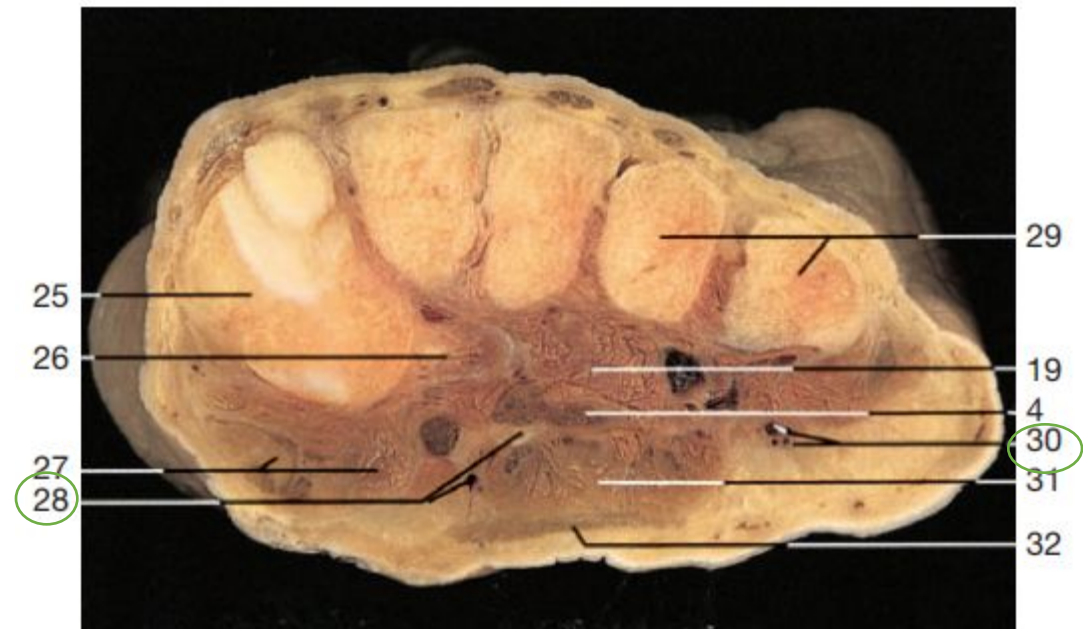
# Дугообразная артерия



- 1 Inferior extensor retinaculum
- 2 Lateral malleolus
- 3 Lateral anterior malleolar artery
- 4 Tendons of peroneal muscles
- 5 Tendon of peroneus tertius muscle
- 6 Extensor digitorum brevis muscle
- 7 Tendons of extensor digitorum longus muscle
- 8 Dorsal metatarsal arteries
- 9 Medial malleolus
- 10 Tendon of tibialis anterior muscle
- 11 Dorsalis pedis artery
- 12 Deep fibular nerve (on dorsum of foot)
- 13 Extensor hallucis brevis muscle
- 14 Tendon of extensor hallucis longus muscle
- 15 Dorsalis pedis artery with deep plantar branch to the plantar arch
- 16 Terminal branches of deep fibular nerve
- 17 Lateral tarsal artery
- 18 Extensor digitorum brevis muscle (divided)
- 19 Arcuate artery
- 20 Dorsal interossei muscles
- 21 Deep fibular nerve



- 1 Proper plantar digital arteries
- 2 Proper plantar digital nerves
- 3 Tendons of flexor digitorum brevis muscle
- 4 Tendons of flexor digitorum longus muscle
- 5 Superficial branch of lateral plantar artery
- 6 Deep branch of lateral plantar nerve
- 7 Superficial branch of lateral plantar nerve
- 8 Lateral plantar nerve
- 9 Lateral plantar artery
- 10 Abductor digiti minimi muscle
- 11 Calcaneal tuberosity
- 12 Common plantar digital arteries
- 13 Tendon of flexor hallucis longus muscle
- 14 Insertion of both heads of adductor hallucis muscle
- 15 Plantar metatarsal arteries
- 16 Medial proper plantar digital nerve
- 17 Deep plantar branch of dorsal metatarsal artery (perforating branch)
- 18 Plantar arch
- 19 Oblique head of adductor hallucis muscle (cut)
- 20 Medial plantar artery
- 21 Medial plantar nerve
- 22 Crossing of tendons in the sole of foot (flexor hallucis longus and flexor digitorum longus muscles)
- 23 Abductor hallucis muscle
- 24 Origin of flexor hallucis brevis muscle
- 25 Medial cuneiform and first metatarsal bones
- 26 Tendon of peroneus longus muscle
- 27 Abductor hallucis and flexor hallucis brevis muscles
- 28 Medial plantar artery, vein, and nerve
- 29 Fourth and fifth metatarsal bones
- 30 Lateral plantar artery, vein, and nerve
- 31 Flexor digitorum brevis muscle
- 32 Plantar aponeurosis



КОНЕЦ