

THE ANALYSIS OF PSYCHOLOGICAL VULNERABILITY OF STUDENTS OF THE SMOLENSK STATE ACADEMY OF PHYSICAL CULTURE, SPORTS AND TOURISM TO THE USE OF PSYCHOACTIVE SUBSTANCES

Author of the scientific research: Lee Y. V.

Scientific supervisor:

Morozova A. F., assistant professor

**THE SMOLENSK STATE ACADEMY OF PHYSICAL
CULTURE, SPORTS AND TOURISM**

THE PURPOSE OF THE STUDY

The early detection of psychological vulnerability and predisposition to the use of psychoactive substances among the students of the Smolensk State Academy of Physical Culture, Sports and Tourism, as well as the identifying of problem areas in the preventive work to avoid possible pathology.



Tasks:

- identification of prepathology, boundary condition, which may cause the use of psychoactive substances (PAS);
- study of psychological vulnerability to the reception of psychoactive substances on the results of questionnaires, associated with a different type of character accentuation;
- formation of risk groups;
- identifying of problem areas in the preventive work.

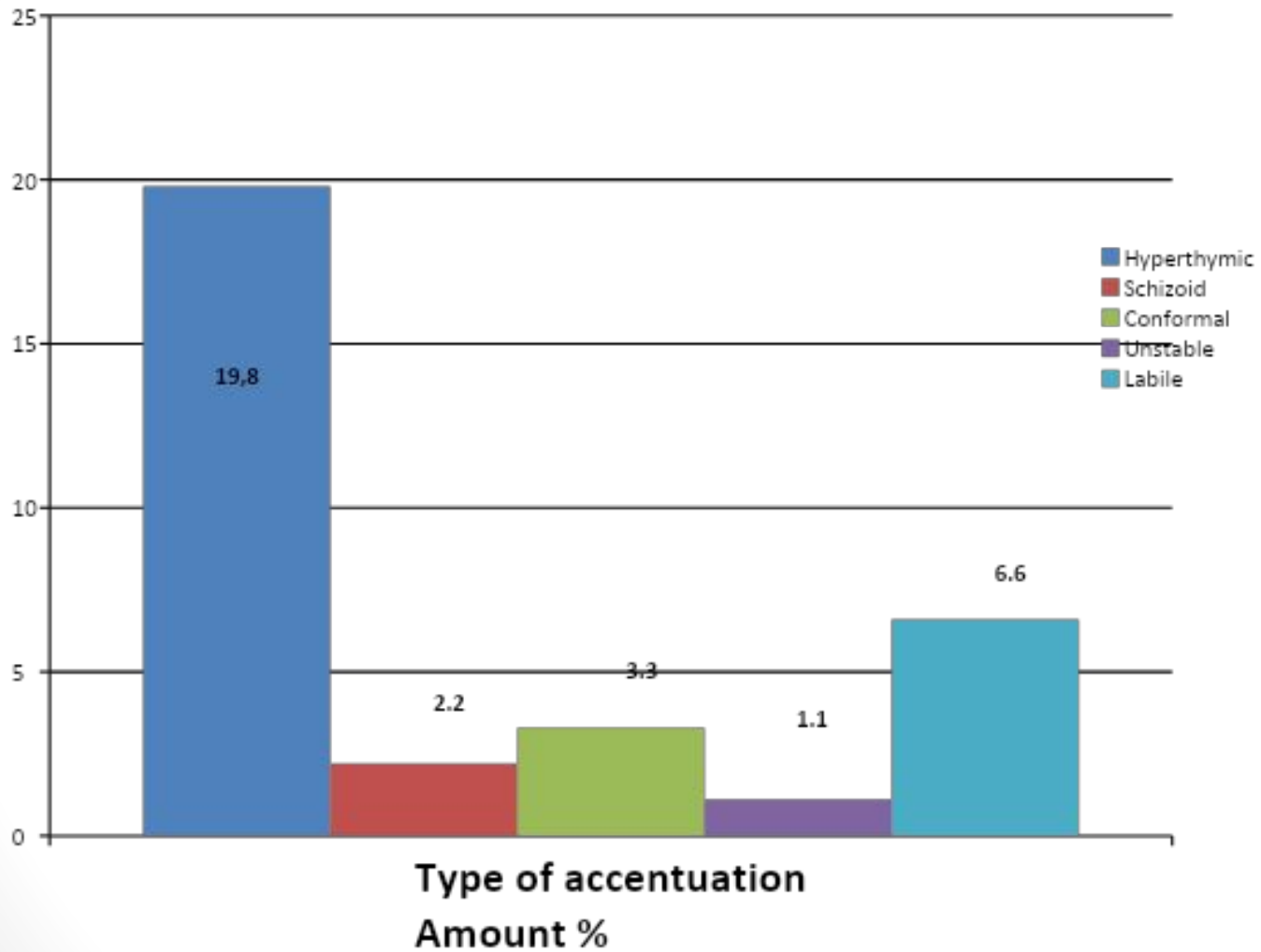


INTERPRETATION OF THE RESULTS.

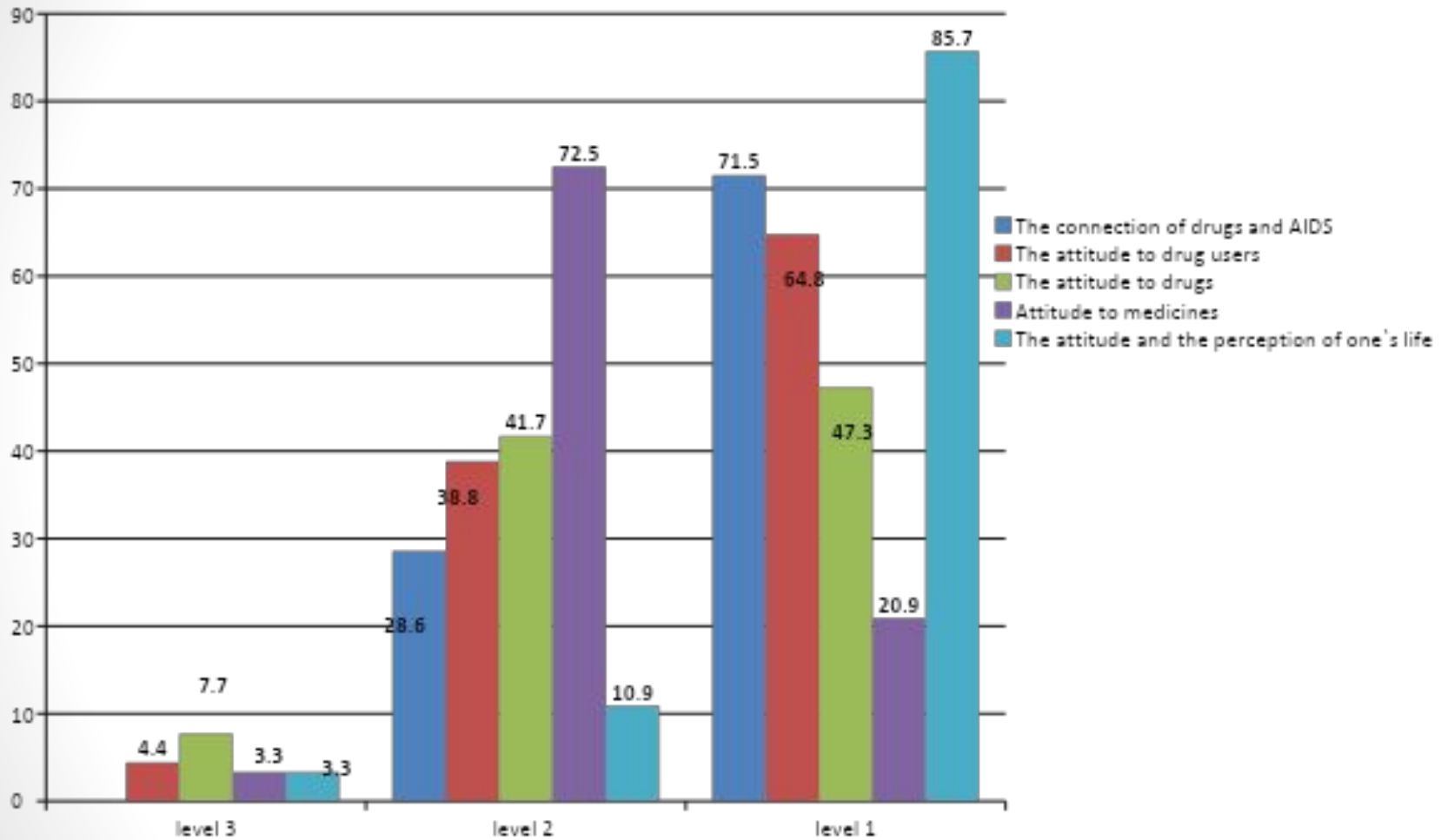
To carry out the tasks of the research the students of different specializations of the Smolensk state academy of physical culture, sports and tourism were surveyed. The test Devil's Dozen and the questionnaire TSKV were used. The group of risk is determined on the base of the comparison of the data according to two methods.



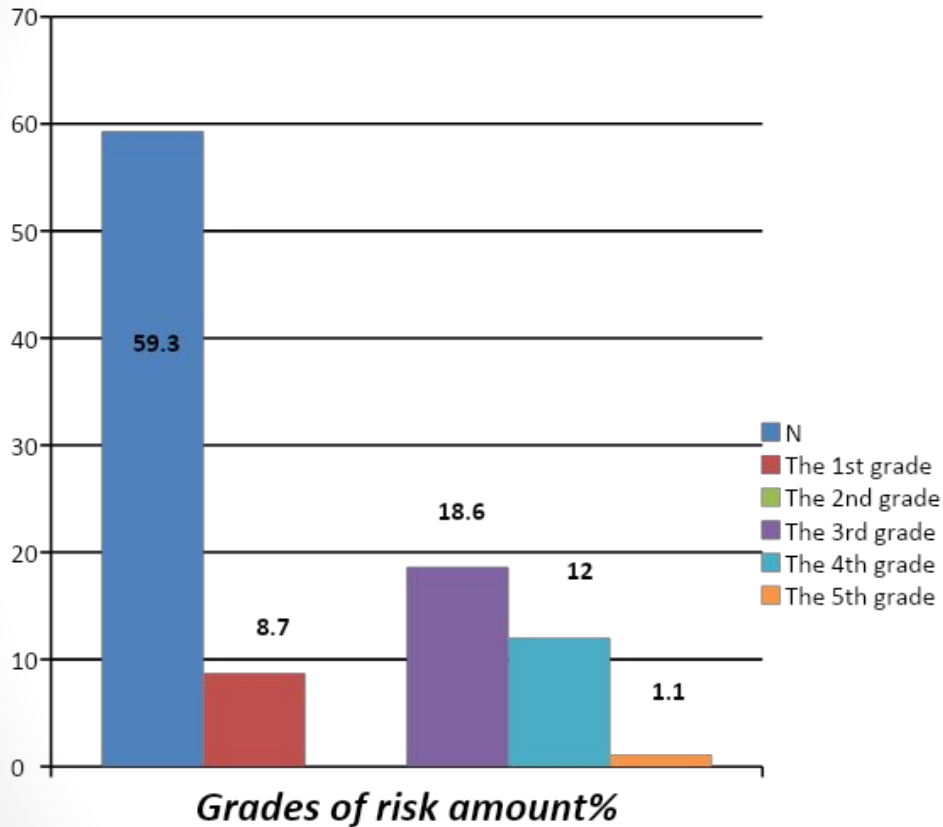
Devil's Dozen



TSKV



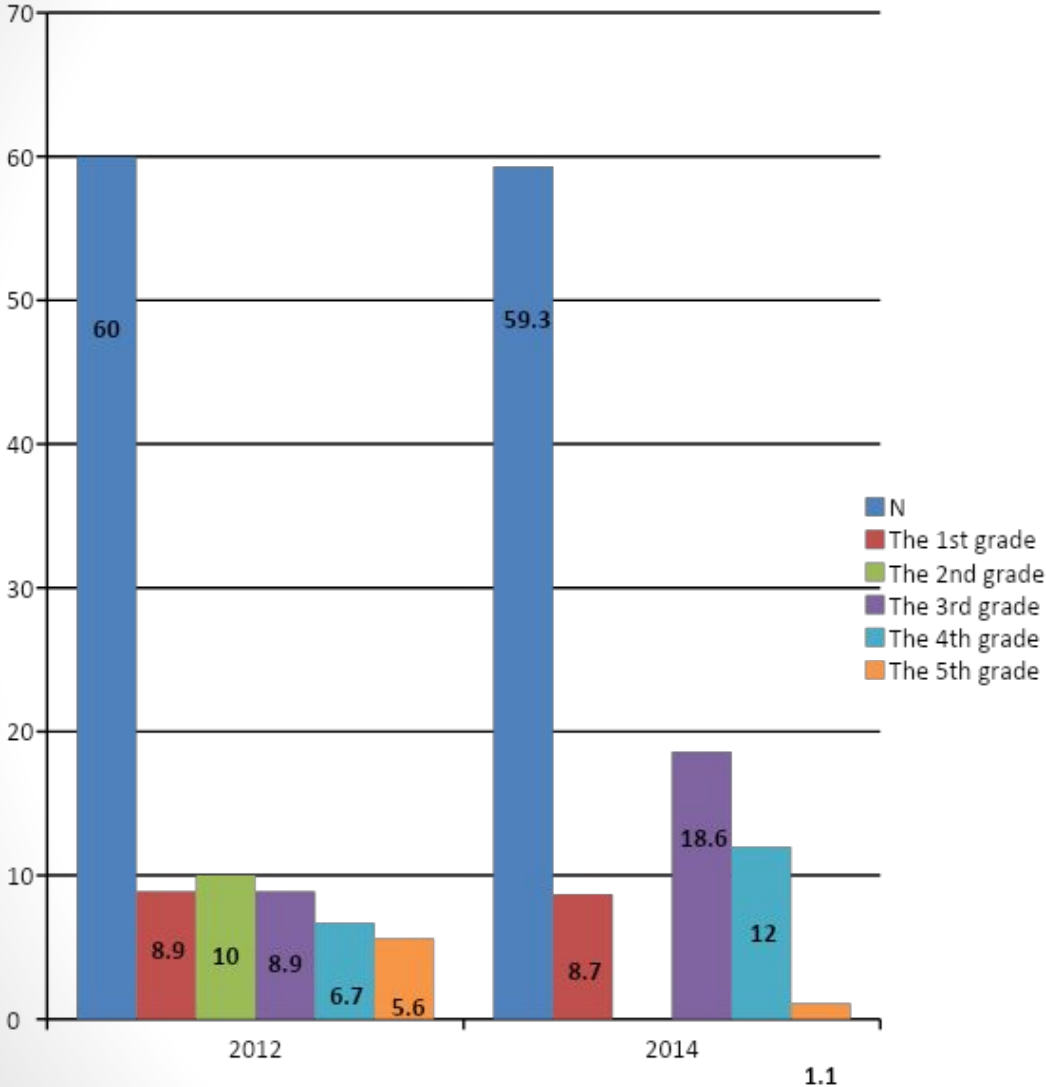
The comparison of the data according to two methods.



We have identified 5 grades of risk and the category of norm. The data are listed below in descending order of risk.

- ✓ The 1st grade - there is the accentuation, and the attitude to drugs is determined by a combination of levels of 3/2, 2/3, 1/2/3, 3/1/2, 2/1/3, 3/2/1.
- ✓ The 2nd grade - there is the accentuation, and the attitude to drugs is determined by variants 2, 2/1.
- ✓ The 3rd grade - there is accentuation according to the test TSKV, level 1 or ½, or there is no accentuation according to the test TSKV, level 3
- ✓ The 4th grade - there is no accentuation, and the attitude to drugs is determined by a combination of levels of 3/2, 2/3, 3/1/2, 3/2/1, 2/3/1.
- ✓ The 5th grade - there is no accentuation and the attitude to drugs is determined by level 2 or 1/3 according to the test TSKV

Let`s compare the data with similar ones of the research made in 2012. 60% of 90 respondents have no threatening accentuation. It approximately corresponds to the current results (59.3%).



THUS, THE ANALYSIS OF PSYCHOLOGICAL VULNERABILITY OF STUDENTS TO THE USE OF DRUGS HAS IDENTIFIED THE PROBLEM AREA OF PREVENTIVE WORK AMONG TEENAGERS AND YOUNG ADULTS ON THEIR INDIVIDUAL LEVEL:

- ✓ - correction of hypertrophic features of character, potentially dangerous, which create the ground for psychoactive substances ;
- ✓ -providing by the information necessary for the realization of the balanced position in the attitude to psychoactive substances;
- ✓ -formation of the stable negative attitude to psychoactive substances.

Thank you for your
attention!

