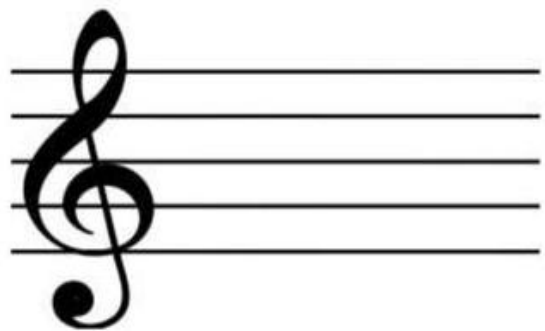

The background is a vibrant pink color. On the left side, there is a large white bass clef at the top, with several black musical notes of various values (quarter, eighth, and sixteenth notes) scattered around it. On the right side, there is a large white treble clef, also with several black musical notes scattered around it. The text is centered in the middle of the page in a white, bold, sans-serif font.

Написание  
скрипичного  
ключа



The background is a vibrant pink color. It is decorated with various musical symbols in white and black. On the left side, there is a large white bass clef at the top, with several black musical notes of different values (quarter, eighth, and sixteenth notes) scattered around it. On the right side, there is a large white treble clef, also with several black musical notes scattered around it. In the center, the text is written in a white, bold, sans-serif font. There are also a few small white circles scattered in the upper left area.

Расположение нот  
первой октавы  
на нотном стане

# Нота ДО



# Нота РЕ



# Нота МИ



# ΗΟΤΑ ΦΑ



# Нота СОЛЬ



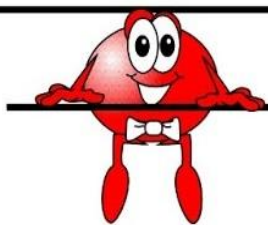


# Нота ЛЯ

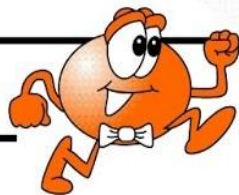


# Нота СИ

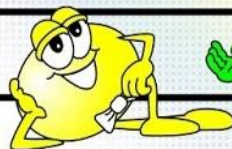




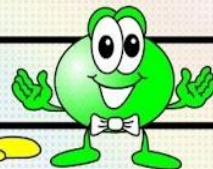
ДО



РЕ



МИ



ФА



СОЛЬ



ЛЯ



СИ