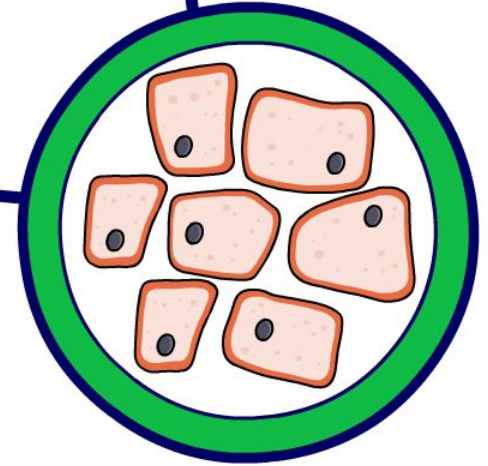
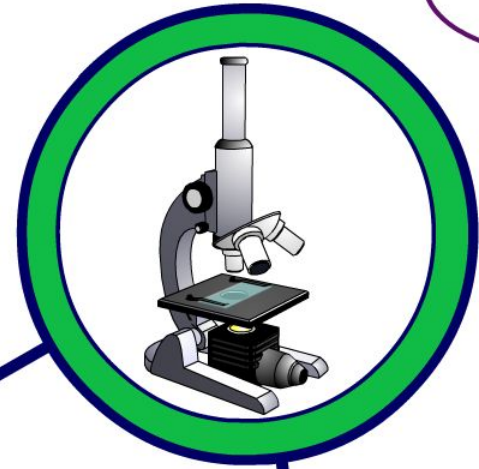
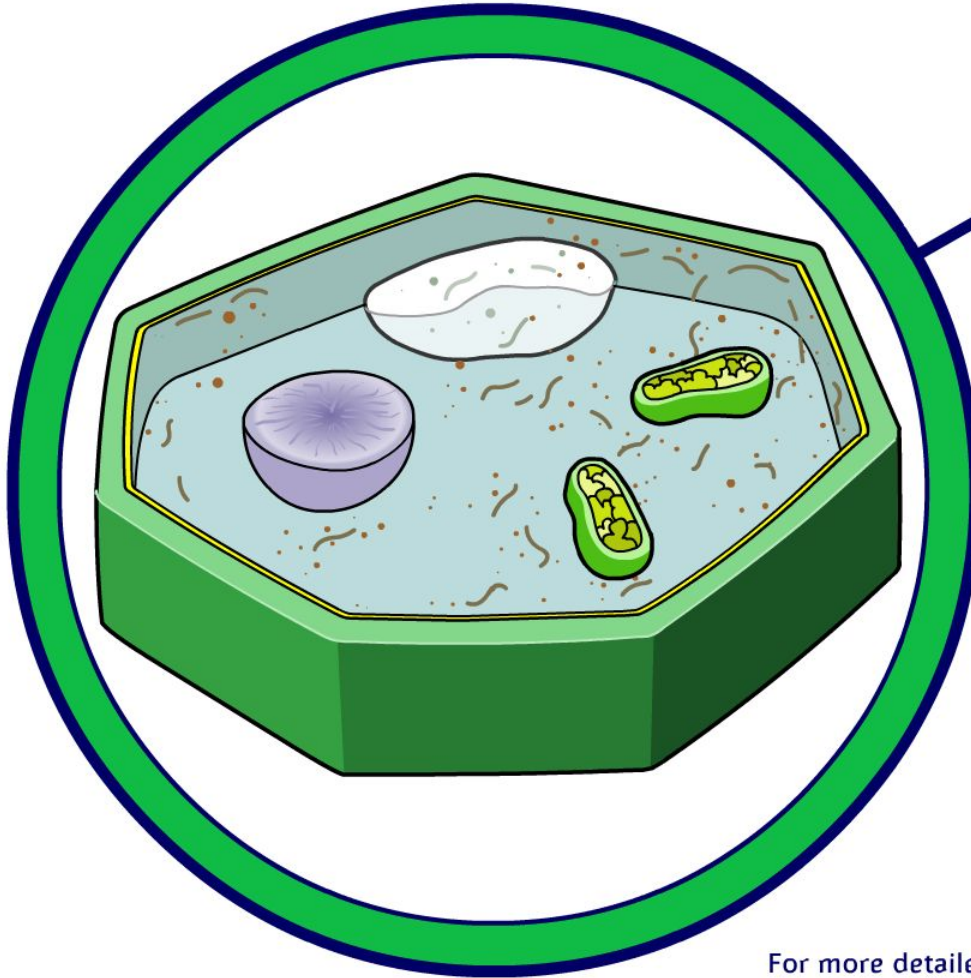


Cells



For more detailed instructions, see the *Getting Started* presentation.



Indicates a Flash activity.



Indicates an accompanying worksheet.



Indicates a virtual experiment.



Indicates that there are teacher's notes.

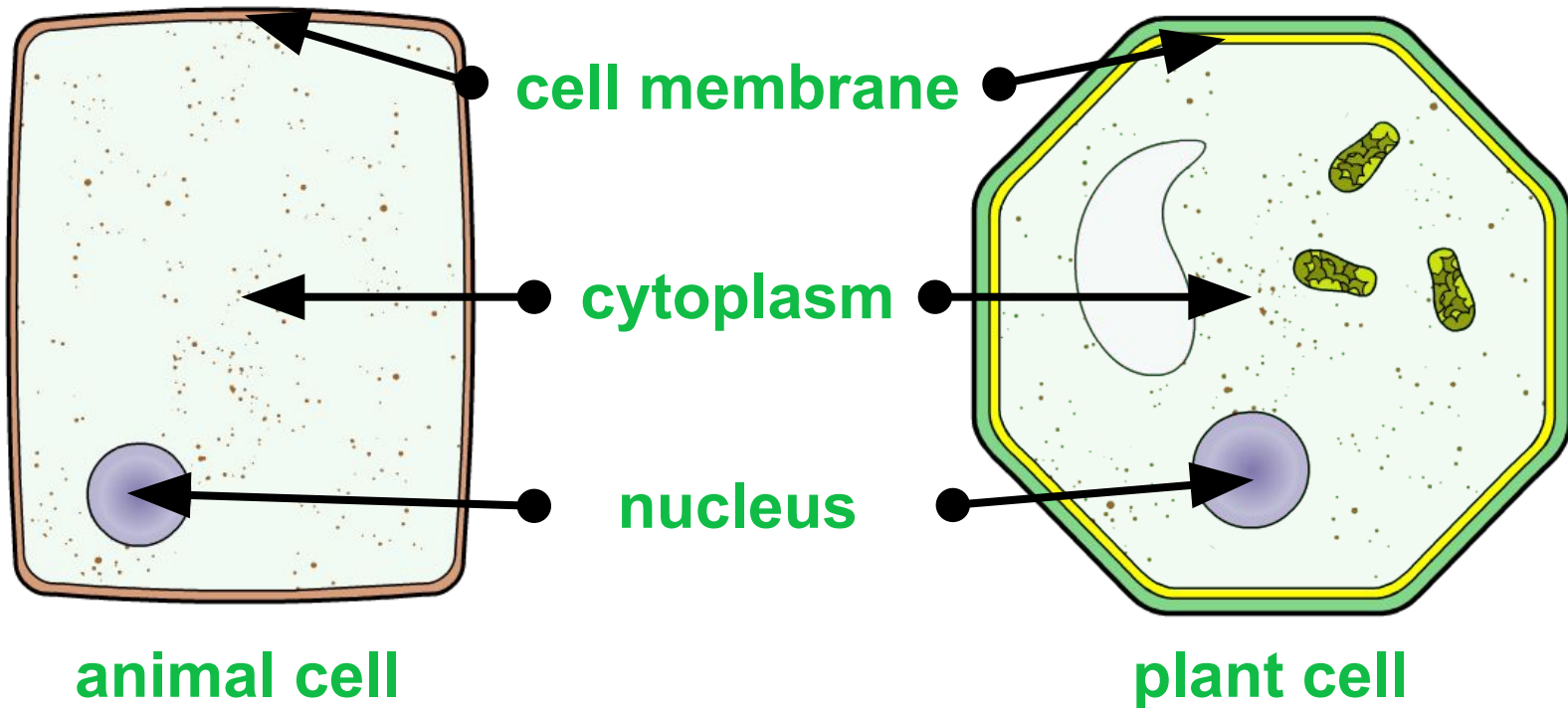


Indicates audio.



What is a cell?

Animal and plant cells come in different shapes and sizes, but they all have three basic features.



Plant cells also have some extra features that make them different to animal cells.



The parts of a typical plant cell



Collecting plant cell samples



Using a microscope



Looking at cells



Who invented the microscope?

