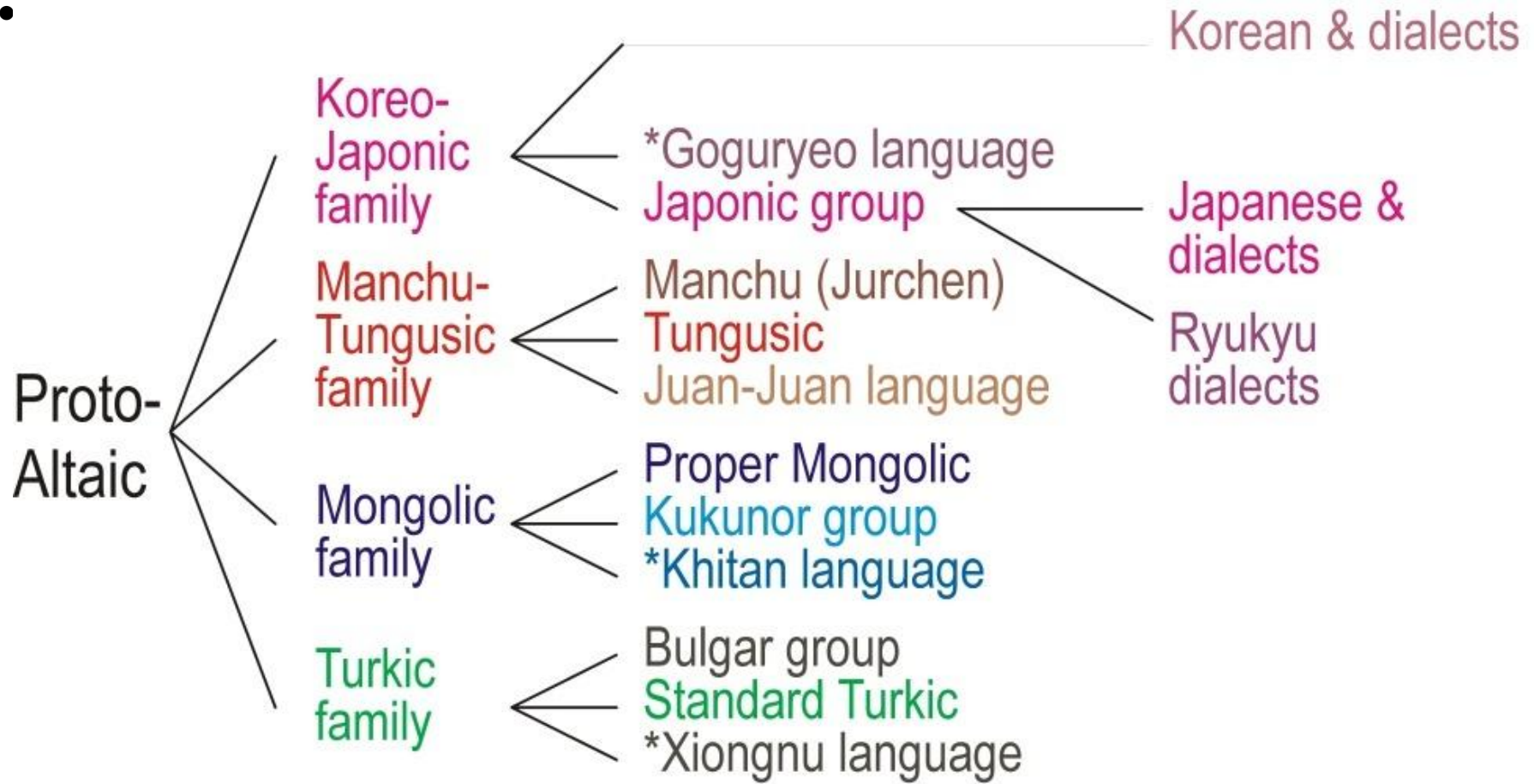


# Altaic linguistics and mythology: geography or relationship?

A. Dybo (IL RAS, Moscow),  
E. Korovina (IL RAS, Moscow)

- The genealogical tree of the Altaic language family according the recent researches



- Dating by methods of classical comparative-historical linguistics:
- Written sources
- Data of linguistic contacts
- Data of cultural reconstructions
- 
- An example:
- Dating of the divergence of Proto-Turkic language by loan-words from Chinese

## Late Old Chinese borrowings in Proto-Turkic

- 1. *\*(a)laču-k* ‘cottage, small yurt’: LOCh. *la-λiaʔ* ‘cottage’ 廬舍
- 2. *\*gümüλ* ‘silver’: LOCh. *\*kəm-liw* 金鏐, ‘bright silver’
- 3. *\*Təmür* ‘iron’: LOCh *\*tiēt-mhwit* (= *mwut*) ‘iron thing’, dial. *Tiēr-mwur* 鐵物
- 4. *\*könüg suv* ‘quicksilver’: LOCh *\*köuŋ* 汞 ‘quicksilver’
- 5. *\*bək* ‘a nobility rank’: LOCh *pək* 伯 ‘to be elder’
- 6. *\*čerig* ‘army’, originally ‘army formation’: LOCh *cjāt*, dial. *cjār* 節 ‘knie; detachment’
- 7. *\*sü* ‘army’: LOCh *\*śwò* 戍 ‘frontier guards’
- 8. *\*biti-* ‘write’: LOCh *pit*: 筆 ‘writing brush’
- 9. *\*kujn* ‘scroll, book’: LOCh *kwén* 卷 ‘reel, coil, volume’

- 10. \**bengü* ‘eternal’: LOCh 萬 *mwān* ‘be ten-thousand, myriad’ 萬 + LOCh 古 *kō* ‘be ancient’
- 11. \**č̣in* ‘verity’: LOCh 貞 *t’eŋ* ‘to test, try out, correct’
- 12. \**deng* ‘equal’: LOCh 等 *tāŋ?* ‘equal’
- 13. \**kög* ‘tune’: LOCh 曲 *khok* ‘melody’
- 14. \**sir* ‘color, dye, lacque’: LOCh 漆 *shjit* ‘lacquer tree, lacquer (*Rhus vernicuflua*)’
- 15. \**jinc̣ü* ‘pearls’: LOCh 真 *ćin* ‘true’ + 珠 *ćwo* ‘pearls’
- 16. \**č̣avli* ‘a species of falcon’: LOCh 鷓 *záwh* ‘sparrow hawk (*Accipiter nisus*)’
- 17. \**Turma* ‘radish, horseradish’: LOCh 土卵 *thārhwān* ‘yam’ (lit. “earthen egg”)

- The reconstruction of the phonetic history of Chinese: S.A.Starostin 1989, W.Baxter 1992.
- The processes in Old Chinese that permit to date the time of OCh borrowing in the PT:
- Laterals > fricatives, *Lh* > *zh* before short vowels: Eastern Han
- *T* > *ć* before short vowels: Eastern Han (0 – III cent. A.D.)
- *L* > *D* in initials: Early Postclassical Chinese (III cent. A.D.)
- *r, rh* > *l, lh*: Early Postclassical Chinese (III cent. A.D.)
- *pr-* > *p-* : Early Postclassical Chinese (III cent. A.D.)
- *Tr-* > retroflex stops: Western Han (III cent. B.C. – 0)
- *-r* > *-n*: Classical Old Chinese (VII cent. B.C. - III cent. B.C.)
- No processes later than EPCh
- Not before WCh
- Thus, III cent. B.C. – III cent. A.D.)

# Linguistics: quantitative method

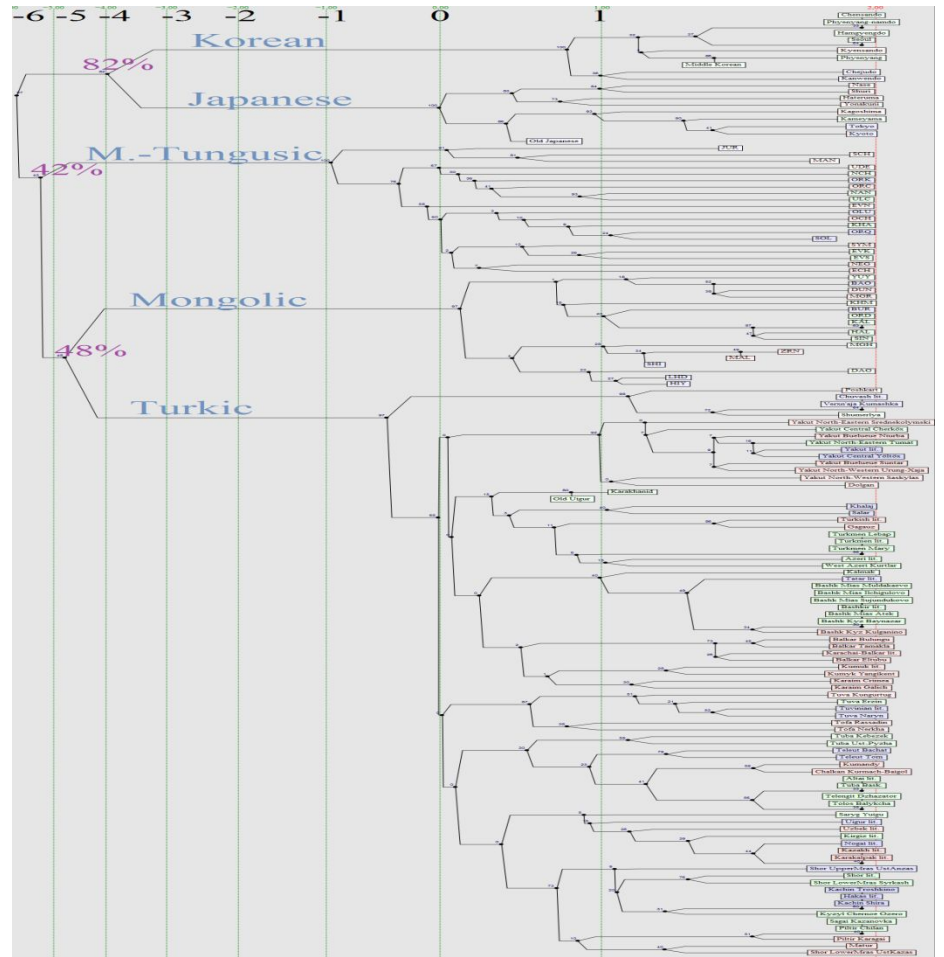
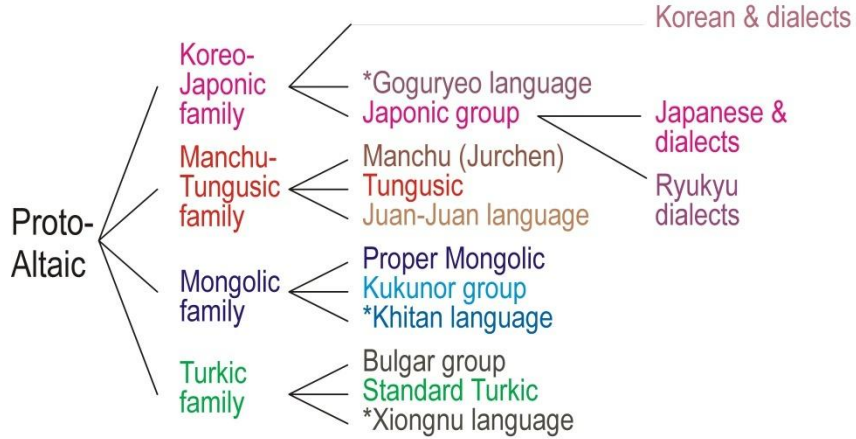
- **Type of data:** short Swadesh-like fixed wordlists, here – Swadesh list with the semantic specification (Kassian et al. 2010);
- **Source of data:** fieldwork, linguistic corpuses, dictionaries;
- **Methods:** distance-based and feature-based clustering, here – Starling NJ;
- **Problems:** statistical errors; What is the “golden standard”? How to avoid overtraining?

# Sources

- 77 Turkic languages and dialects
- 20 Manchu-Tungusic languages and dialects
- 17 Mongolic languages and dialects
- 9 Korean dialects
- 9 Japanese dialects

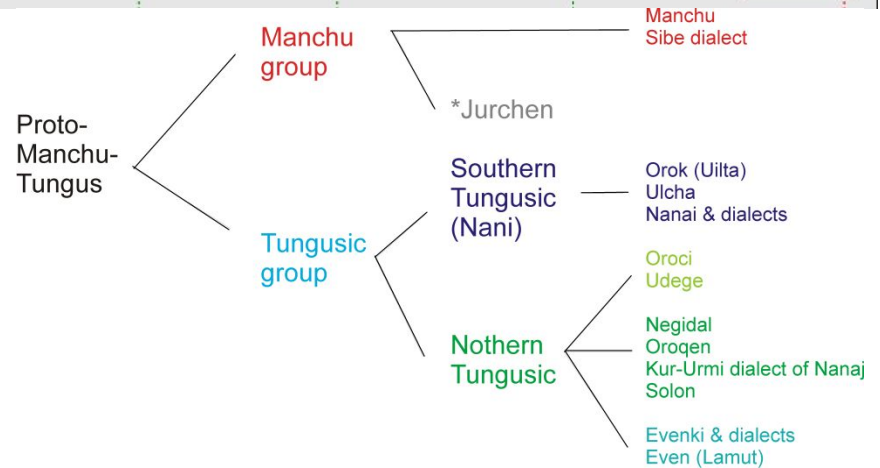
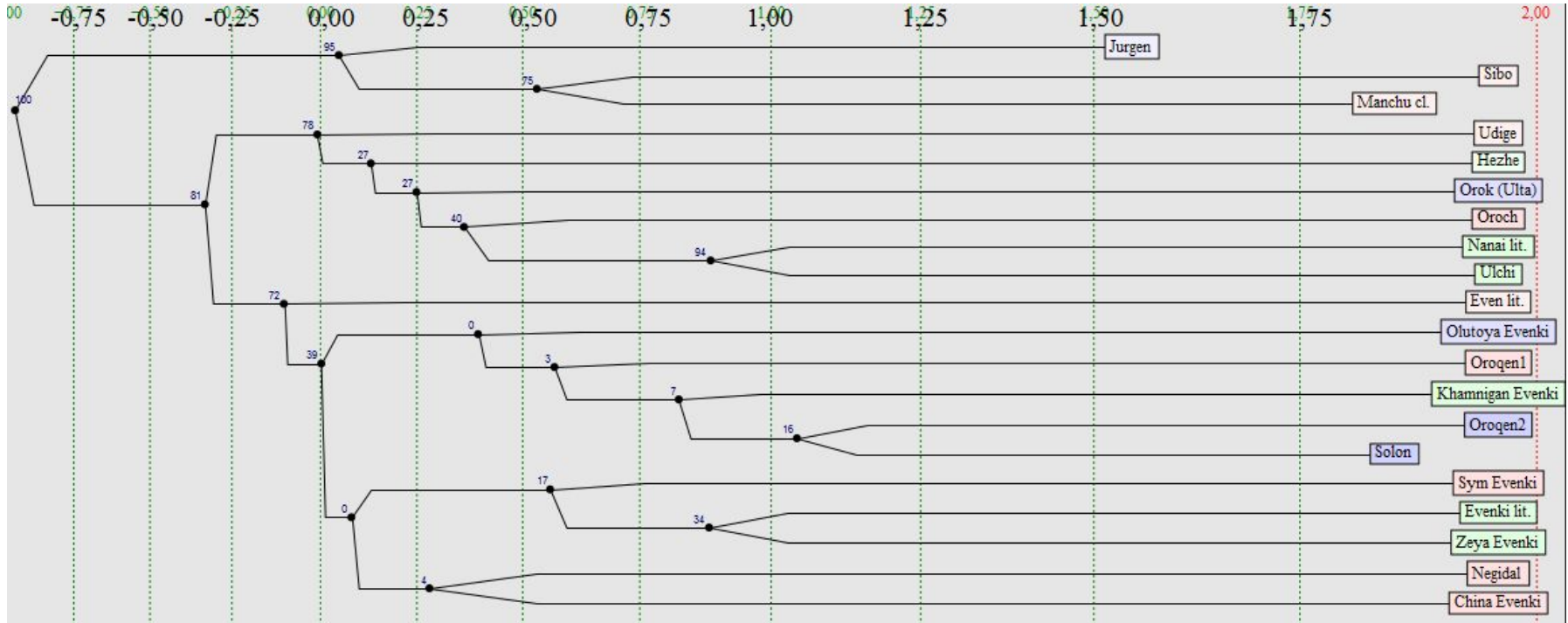


# Altaic

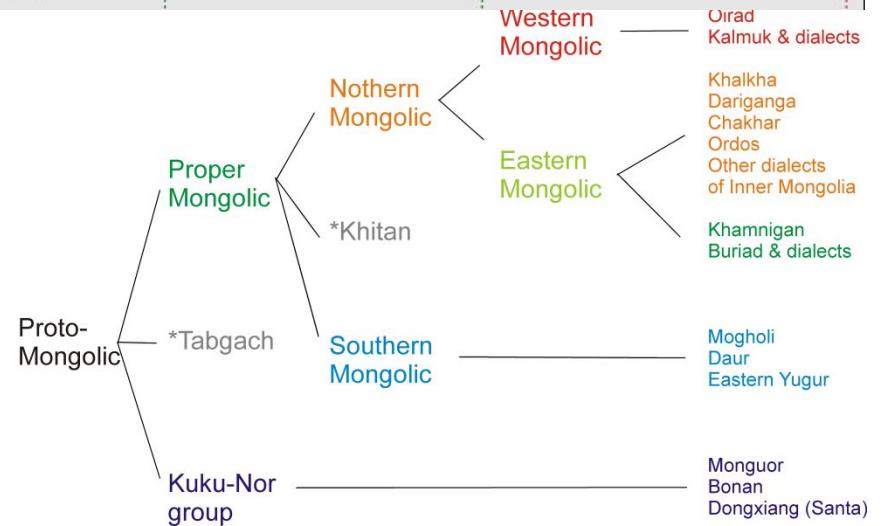
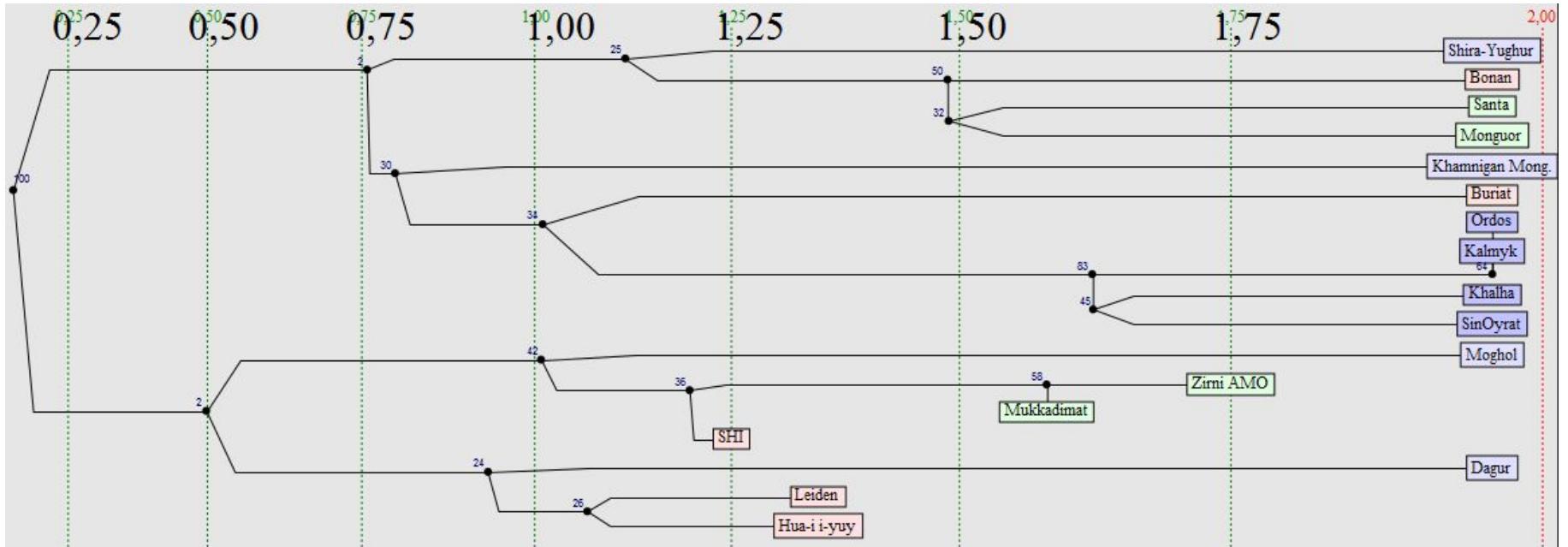


	Turkic	Mongolic	Tungusic	Korean	Japanese
Turkic	>56	~18	~13	~14	~14
Mongolic	~18	>82	~16	~14	~14
Tungusic	~13	~16	>46	~15	~12
Korean	~14	~14	~15	>91	~24
Japanese	~14	~14	~12	~24	>74

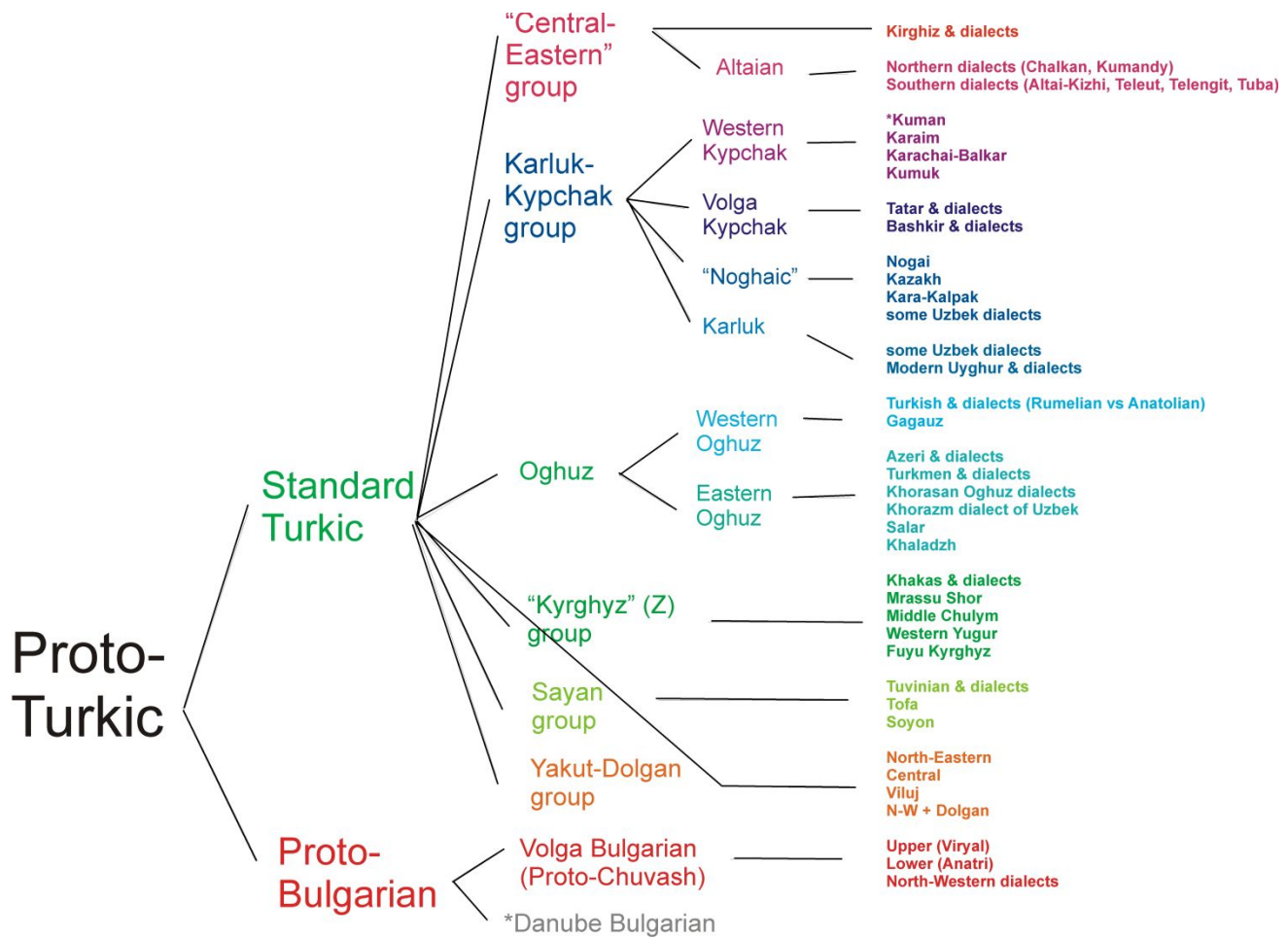
# Tungusic



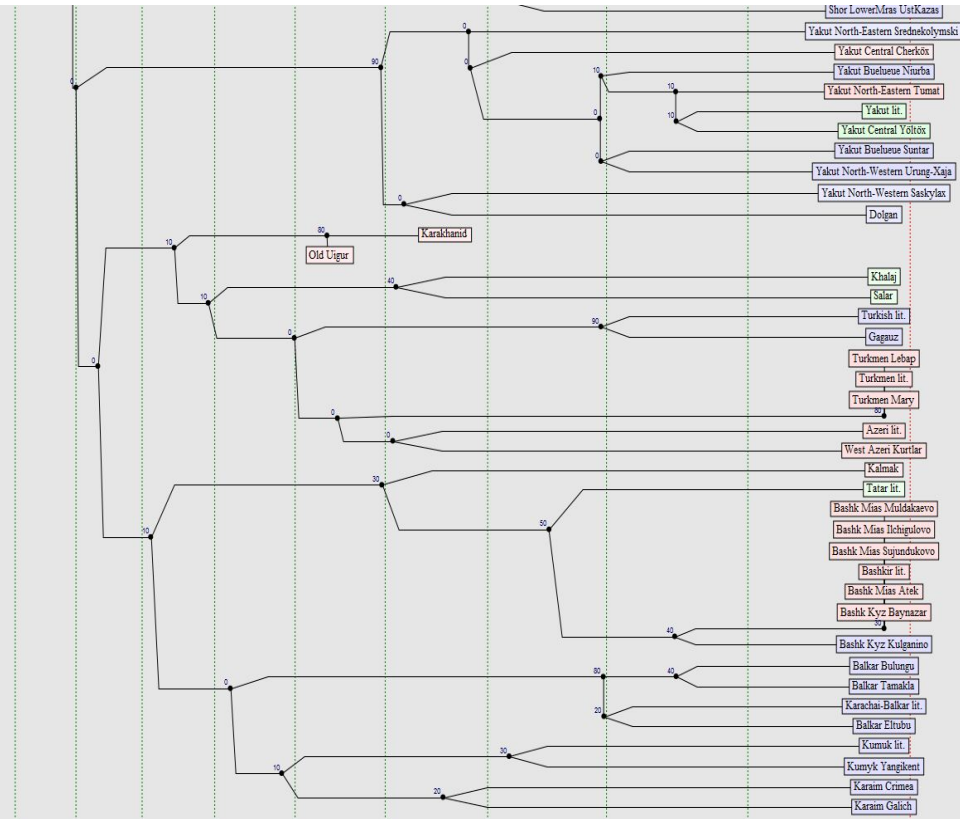
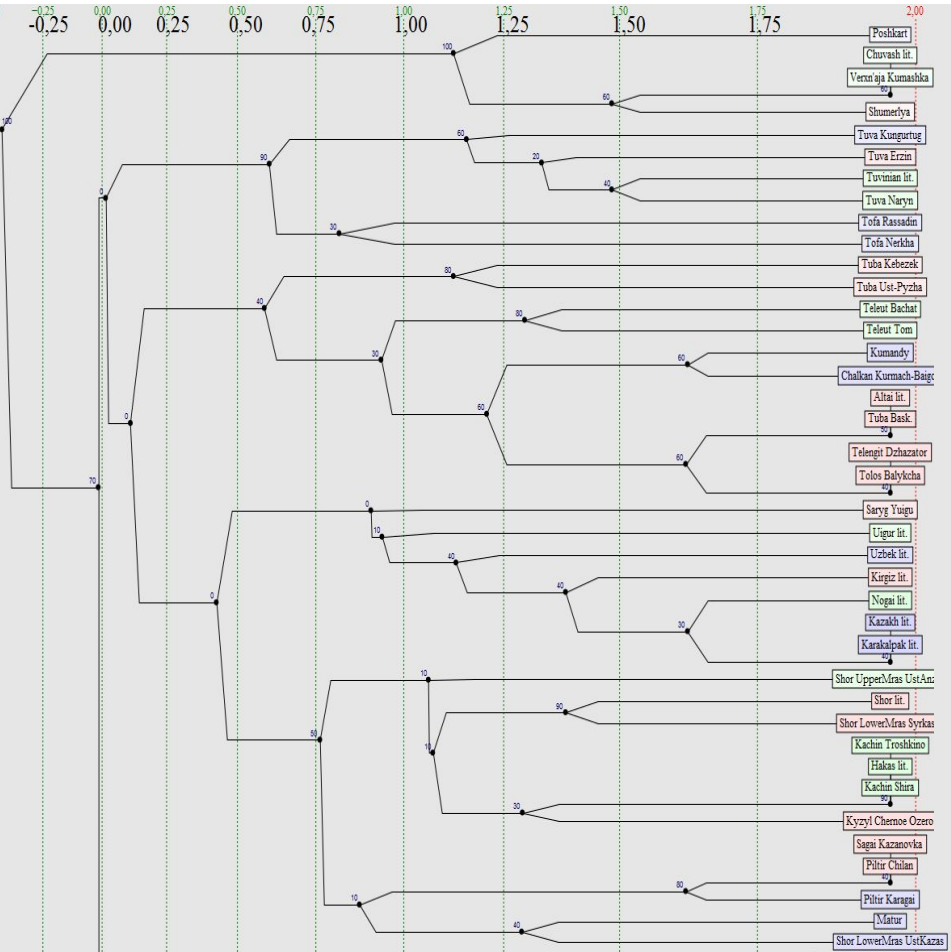
# Mongolic



# Turkic



# Turkic



# TIME

present

40° 60° 80° 240° 220° 200°

8 - 7 ky BP Proto-Altaic starts to split into Korean-Japanese, Manchu-Tungusic, Turko-Mongolic families

1 ky BP

2 ky BP

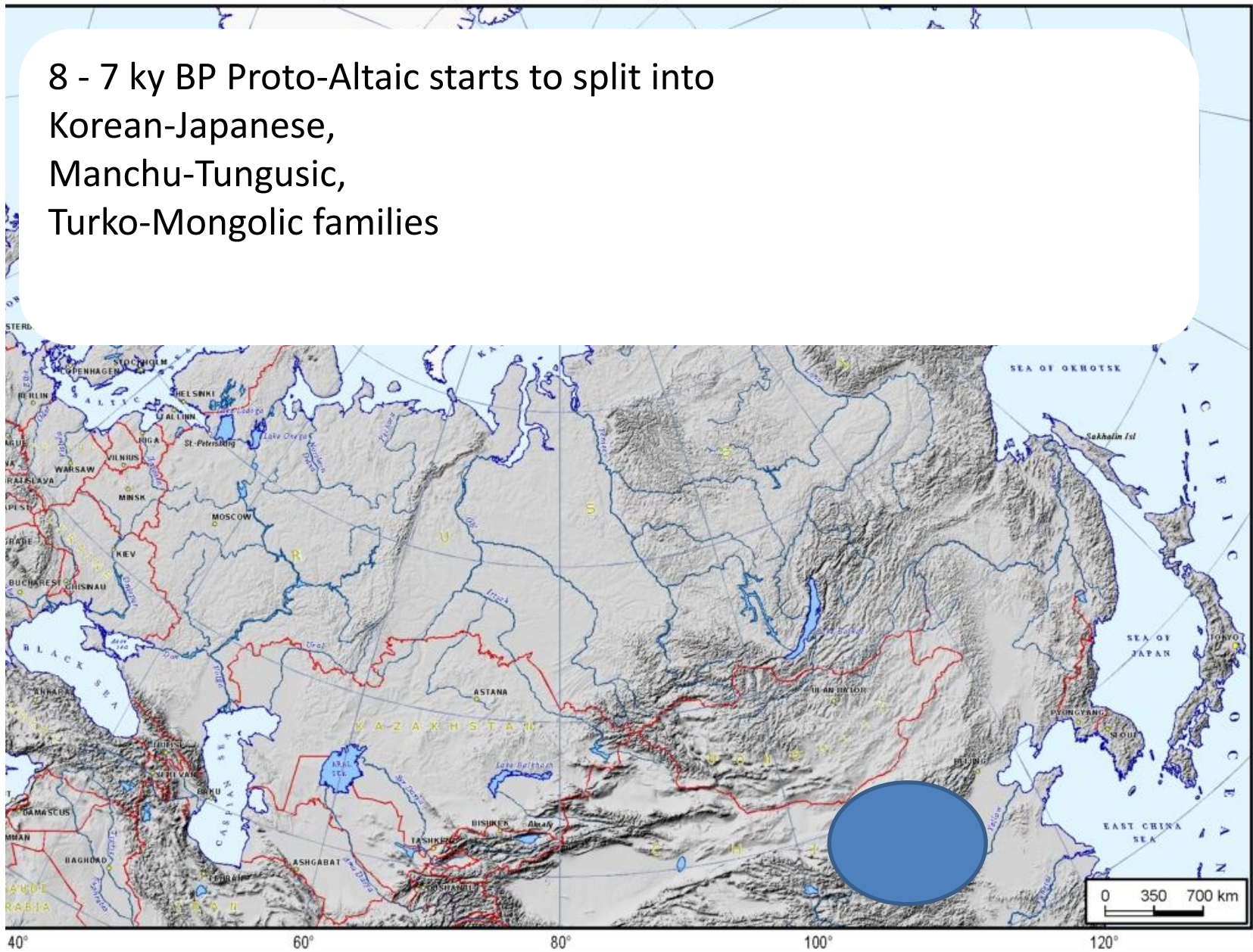
3 ky BP

4 ky BP

5 ky BP

6 ky BP

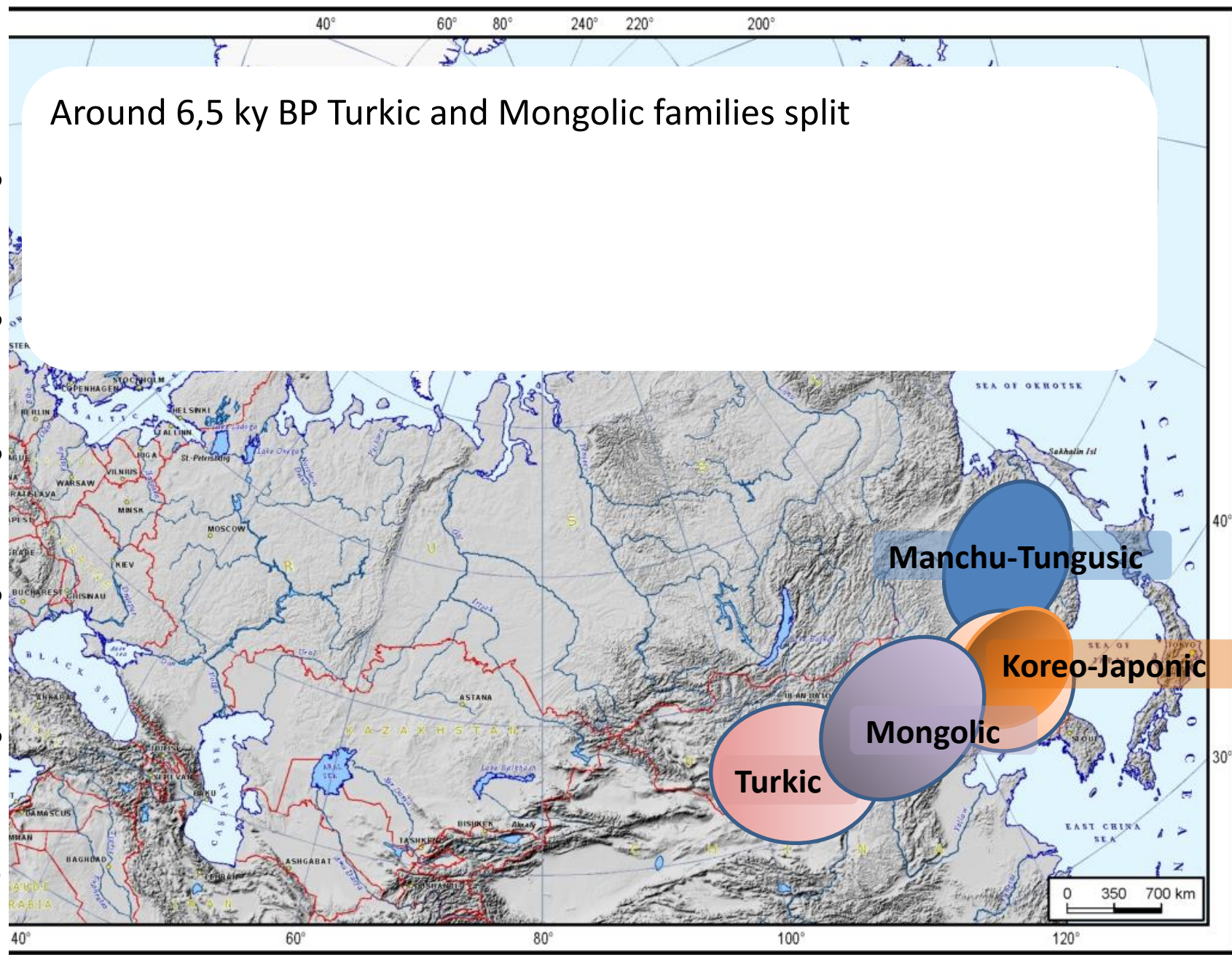
7 ky BP



**TIME**  
present

Around 6,5 ky BP Turkic and Mongolic families split

1 ky BP  
2 ky BP  
3 ky BP  
4 ky BP  
5 ky BP  
6 ky BP  
7 ky BP





# TIME

present

40° 60° 80° 240° 220° 200°

Around 6 - 5,5 ky BP Koreanic and Japonic families split.

No splits detected for the next 3,000 years, till 2,5 kyBP.

1 ky BP

2 ky BP

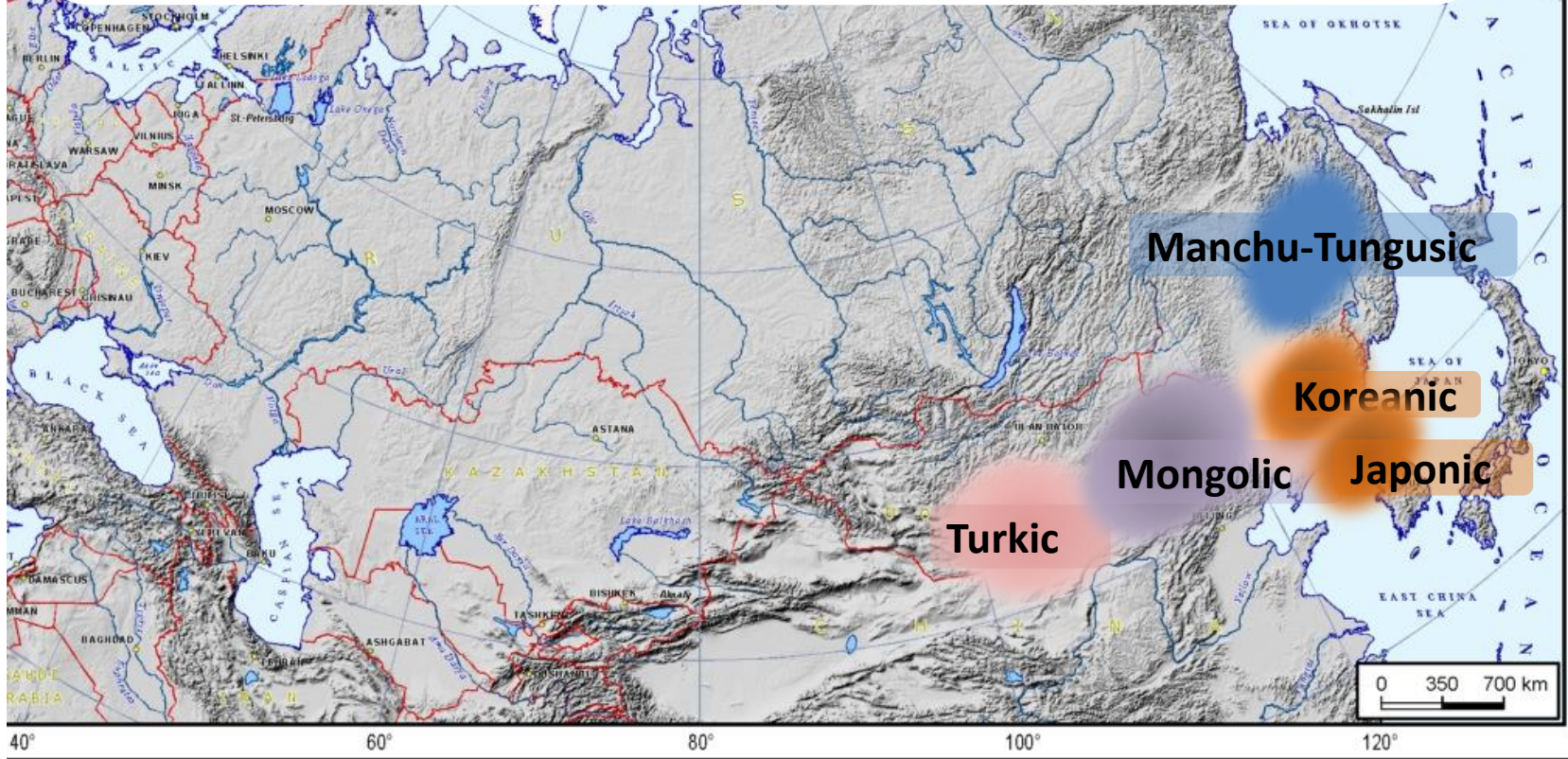
3 ky BP

4 ky BP

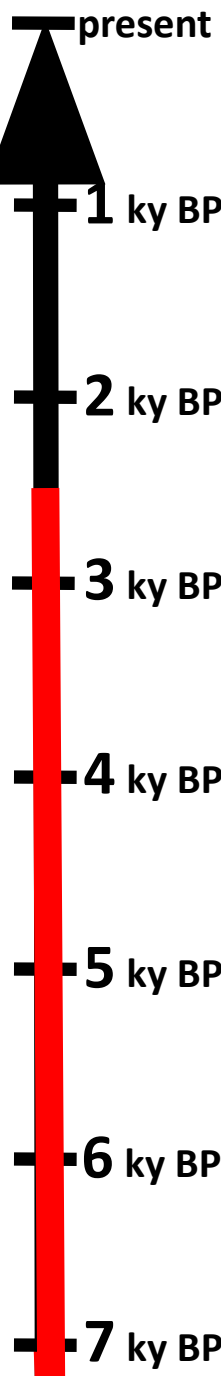
5 ky BP

6 ky BP

7 ky BP



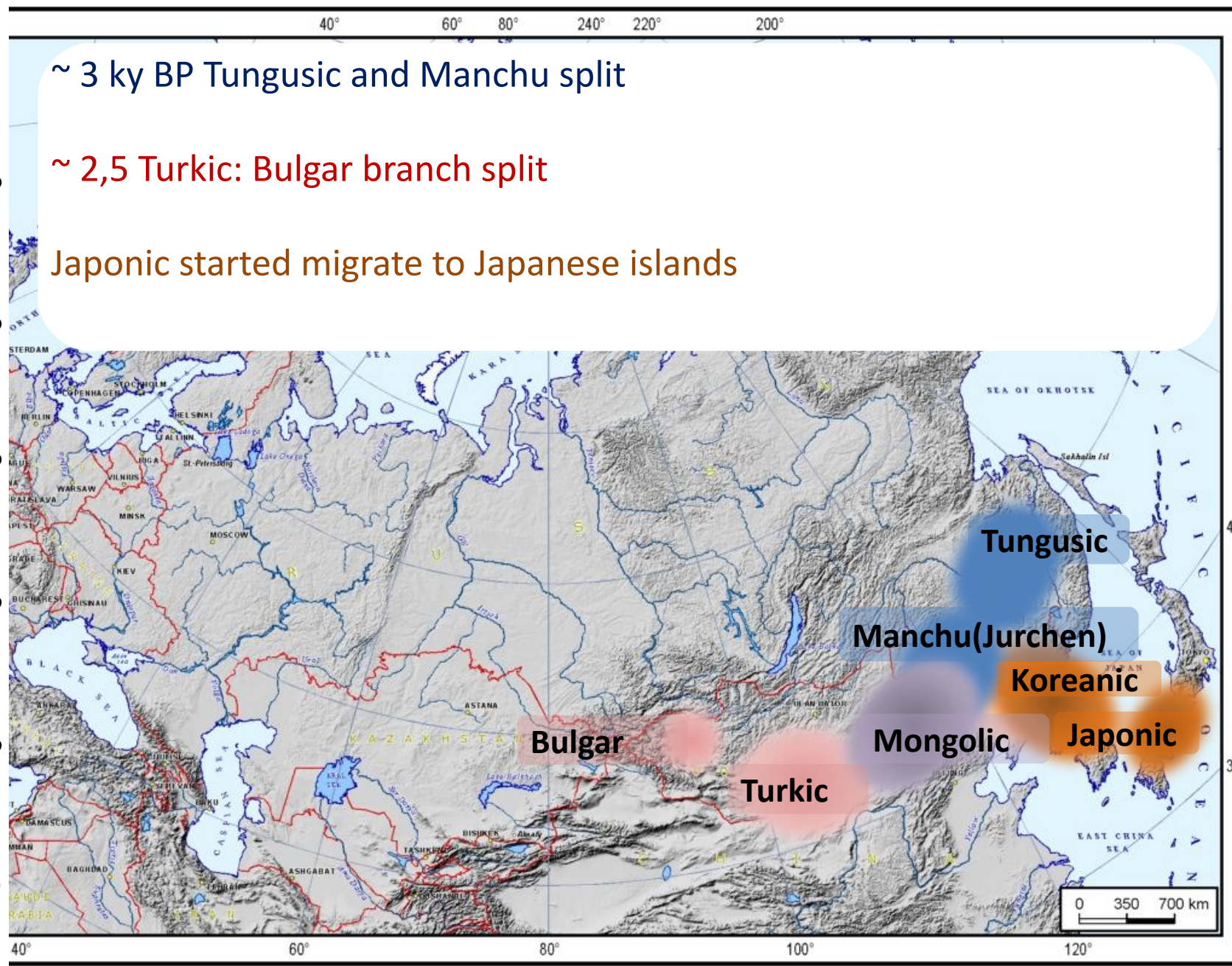
# TIME



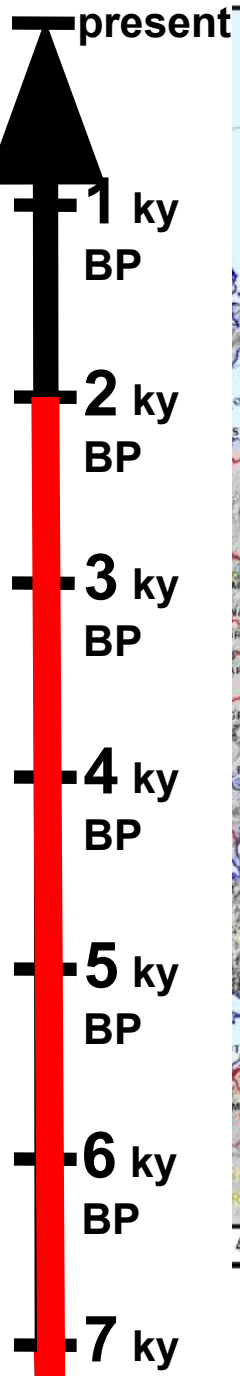
~ 3 ky BP Tungusic and Manchu split

~ 2,5 Turkic: Bulgar branch split

Japonic started migrate to Japanese islands

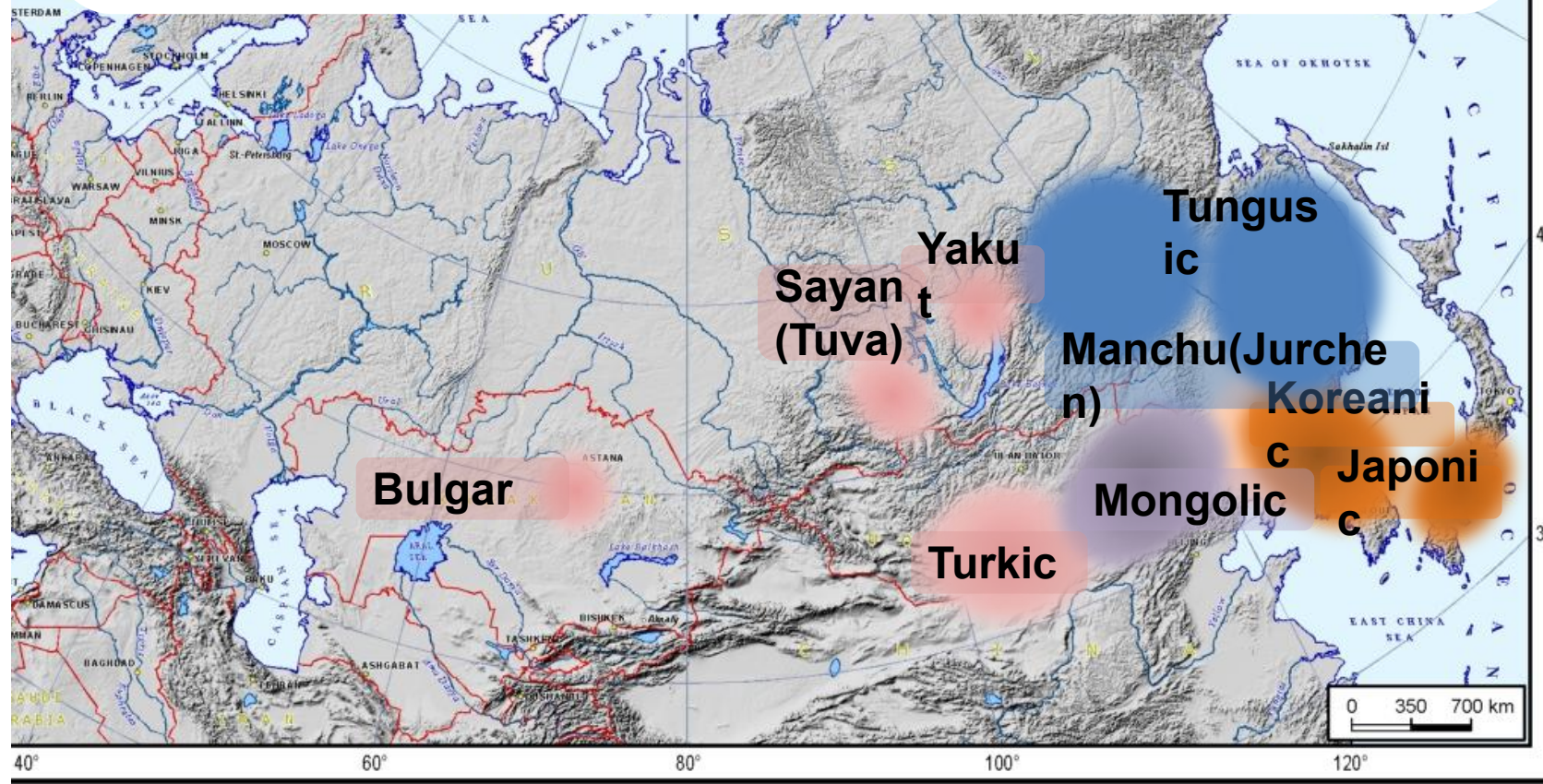


# TIME

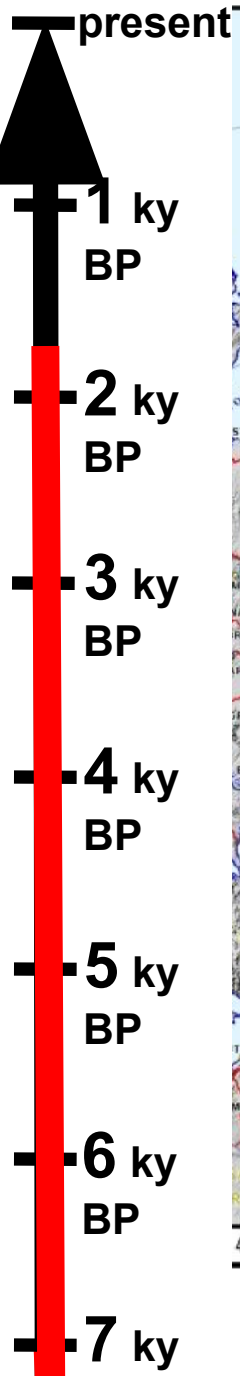


~ 2 ky BP Tungusic split into two branches

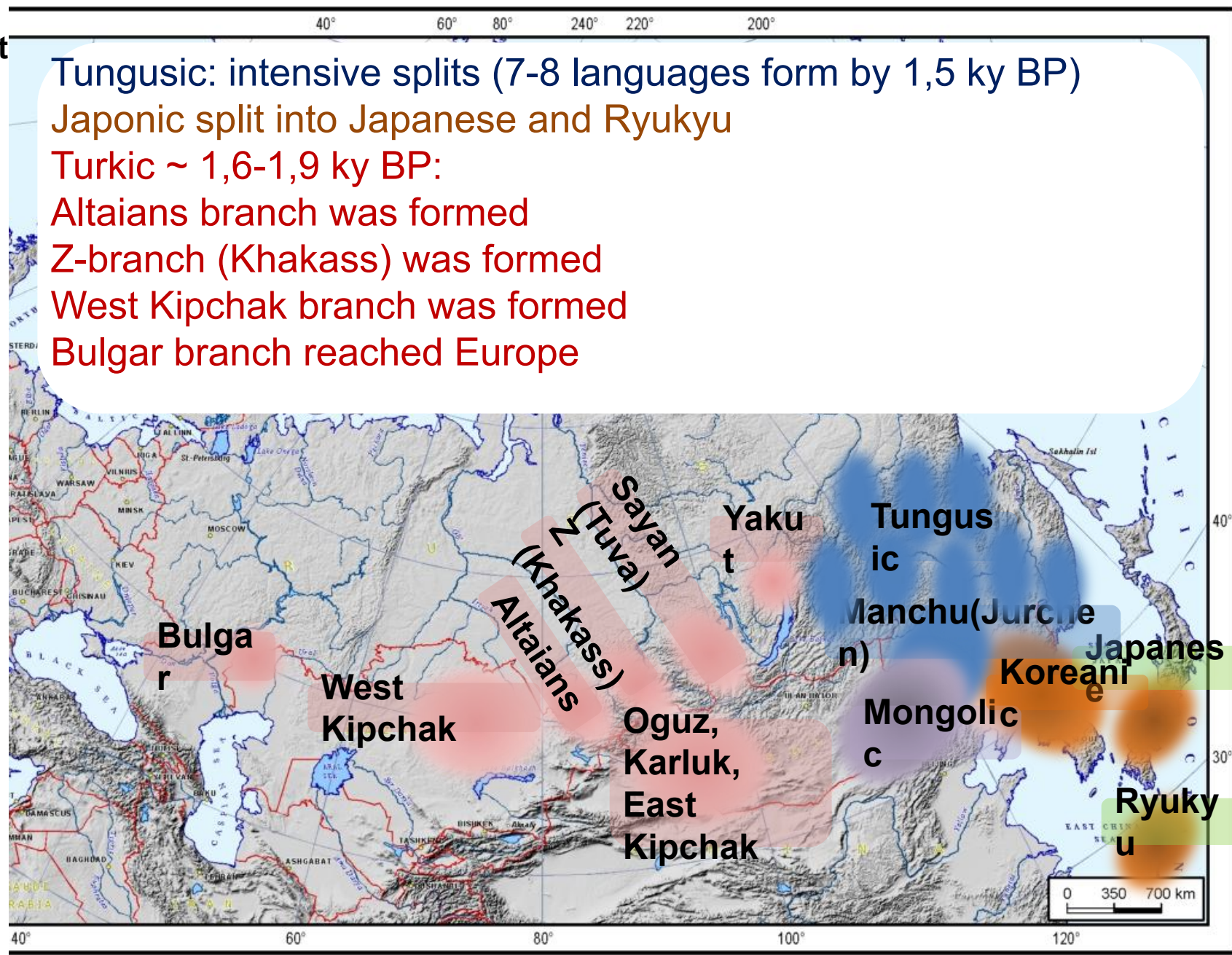
Turkic:  
Bulgar migrates westward  
Yakut branch was formed, then  
Sayan (Tuva) branch was formed



# TIME



Tungusic: intensive splits (7-8 languages form by 1,5 ky BP)  
Japonic split into Japanese and Ryukyu  
Turkic ~ 1,6-1,9 ky BP:  
Altaians branch was formed  
Z-branch (Khakass) was formed  
West Kipchak branch was formed  
Bulgar branch reached Europe



# Mythology

- Based on database of mythological motives of Yu.E. Berezkin  
([www.ruthenia/folklore/berezkin](http://www.ruthenia/folklore/berezkin))
- The largest mythological dataset
- It is difficult to say which motives more basic and less changeable...

# Number of mythological motifs in the Altaic traditions

N. of motifs	Examples of traditions
>400	Kazakh, Bashkirs, Anatolia Turks (3)
300-400	Kazan (Middle Volga) Tatars, Buryats, Karachays, Balkar, Mongols (Khalkha), Chuvash, Azeris (Azerbaijanis) (6)
200-300	Uzbek, Southern Altai: Altai proper (Altai-Kiji), Telengit, Khakas, Tuvinians of Tuva, Kalmyk etc. (13)
100-200	Western Tungus (Evenki), Udeghe, Gagauz, Tungus (Evenki): Baikal region, Evens (Lamuts) etc. (17)
50-100	Siberian Tatars, Western Siberia Tungus (Evenki): Sym River, Ket River, Monguor (Tu), Shirongol, Tofa (Karagas), Negidal etc. (15)
20-50	Chulym Turks, Manchu, Olcha (Ulch), Tungus (Evenki) of China (Solon, Birar, Oroqen, Manegir), Uilta (Orok), Dongxiang (6)
<20	Khwarezm Uzbek, Evens (Lamuts) of Kamchatka, Astrakhan Tatars, Karagash Nogai (3)



# Geography - Linguistics

- Altaic (whole) 0,420644
- Mongolic -0,09496
- Tungusic 0,633088
- Turkic 0,508534



# Geography - Mythology

- Altaic (whole) 0,454104
- Mongolic 0,025048
- Tungusic 0,739057
- Turkic 0,574633

# Linguistics - Mythology

- Altaic (whole) 0,437615
- Mongolic 0,408272
- Tungusic 0,691054
- Turkic 0,569168

Thanks for your attention!